

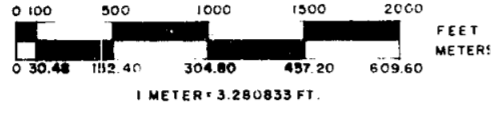
HISTORY OF EARLIER SURVEYS

SURVEY FOR ROGUE RIVER NATIONAL FOREST LOCATED IN SECTIONS 16,17,21,& 28, T.39S., R.1E., W.M.

JACKSON COUNTY, OREGON

SEPTEMBER 15, 1983

SCALE: 1" = 1,000'



DETAIL (Scale: 1" = 200')

In 1871, William M Turner and James Howard, Deputy Surveyors, surveyed a portion of the subdivisional lines, including section 21, as shown on the official plat of survey approved June 28, 1871.

In 1896, Ormond Fletcher, Deputy Surveyor, completed the survey of the subdivisional lines. He surveyed the line between sections 28 and 29 "random and true" into the corner of sections 20 and 21 established by Turner and Howard. In 1897, Fletcher corrected his survey of the line between sections 28 and 29, establishing a closing corner on the south boundary of section 20, 5.00 chains west of the corner of sections 20 and 21. The Fletcher surveys are shown on the official plat of survey approved October 8, 1897.

In 1927, F.H. Walker, Professional Engineer No 652, referenced the corner of sections 20 and 21, and the closing corner of sections 28 and 29, during construction of the Reeder Gulch Reservoir. The references established by Walker are still in place. The original corner positions are now beneath the surface of the reservoir. See Detail 1.

In 1960, C. Albert White surveyed the line between sections 16 and 17. Subsequent to this survey, the position of the 1/4 section corner of sections 16 and 17, monumented by White, was protested. An investigation disclosed evidence of the original corner position, affecting the bearing and distance of the line between sections 16 and 17.

In 1976, Lynn M. Roseberry, B.L.M. Cadastral Surveyor executed a corrective independent resurvey and re-orientation of the line between sections 16 and 17.

In 1982, Everett L. Swain, R.P.L.S. 759, set by single proportion measurement, the 1/4 section corner between sections 16 and 21, as shown on survey No 9339, as filed with Jackson County Surveyor's Office.

Harold L. Center, R.P.L.S. 1071, monumented the 1/4 corner common to sections 28 & 29 from the original bearing trees; see Survey No 3570 as filed March 31, 1983, Jackson County Surveyor's Office, dated March 21, 1983.

In 1983, Harold L. Center, Cadastral Surveyor, executed a dependent resurvey and monumentation, between the 1/4 section corner between sections 28 & 29, and the closing corner between sections 28 & 29, under Special Instruction from the B.L.M., dated April 26, 1983, Group No 1156, Oregon.

NOTES

- 1) All corners have a 6ft. aluminum fence post with either an "Attention" sign or a "Land Survey Monument" sign attached.
2) All B.T.'s have B.T. tags, either an "Attention" sign, or a "Land Survey Monument" sign, and a 6" painted red band. All B.T.'s marked have a 3/4" brass washer marked "RLS 601" on the lower blaze.
3) At the date of this survey, several corners used as control for this survey were set under Special Instruction from the B.L.M., dated April 26, 1983, Group No 1156, Oregon, and are unofficial. This survey is subject to any discrepancies or changes which may occur prior to these corners becoming official.

LEGEND

- Symbol for 2 1/2" brass cap on 2 1/2" x 30" iron pipe
Symbol for Found - Standard B.L.M. monument (except as noted)
Symbol for Computed point
Symbol for Record data
Symbol for Line posted with 6ft. aluminum fence posts and "National Forest Boundary" signs/blazed and painted.
Symbol for Circled number refers to number in Narrative.

SURVEYOR'S CERTIFICATE

I, Malcolm N. Clark, a registered professional land surveyor in the State of Oregon, hereby certify that this plat and the notes hereon are a correct representation of a survey I performed during May-Sept 1983, for the U.S. Forest Service, in accordance with the Statutes of the State of Oregon, and with the articles of my contract.

Malcolm N. Clark

Malcolm N. Clark
Registered Professional Land Surveyor
Oregon License 601

REGISTERED PROFESSIONAL LAND SURVEYOR

Malcolm N. Clark

OREGON JULY 12, 1952 MALCOLM N. CLARK 601

Accepted And Approved For The U.S. Forest Service

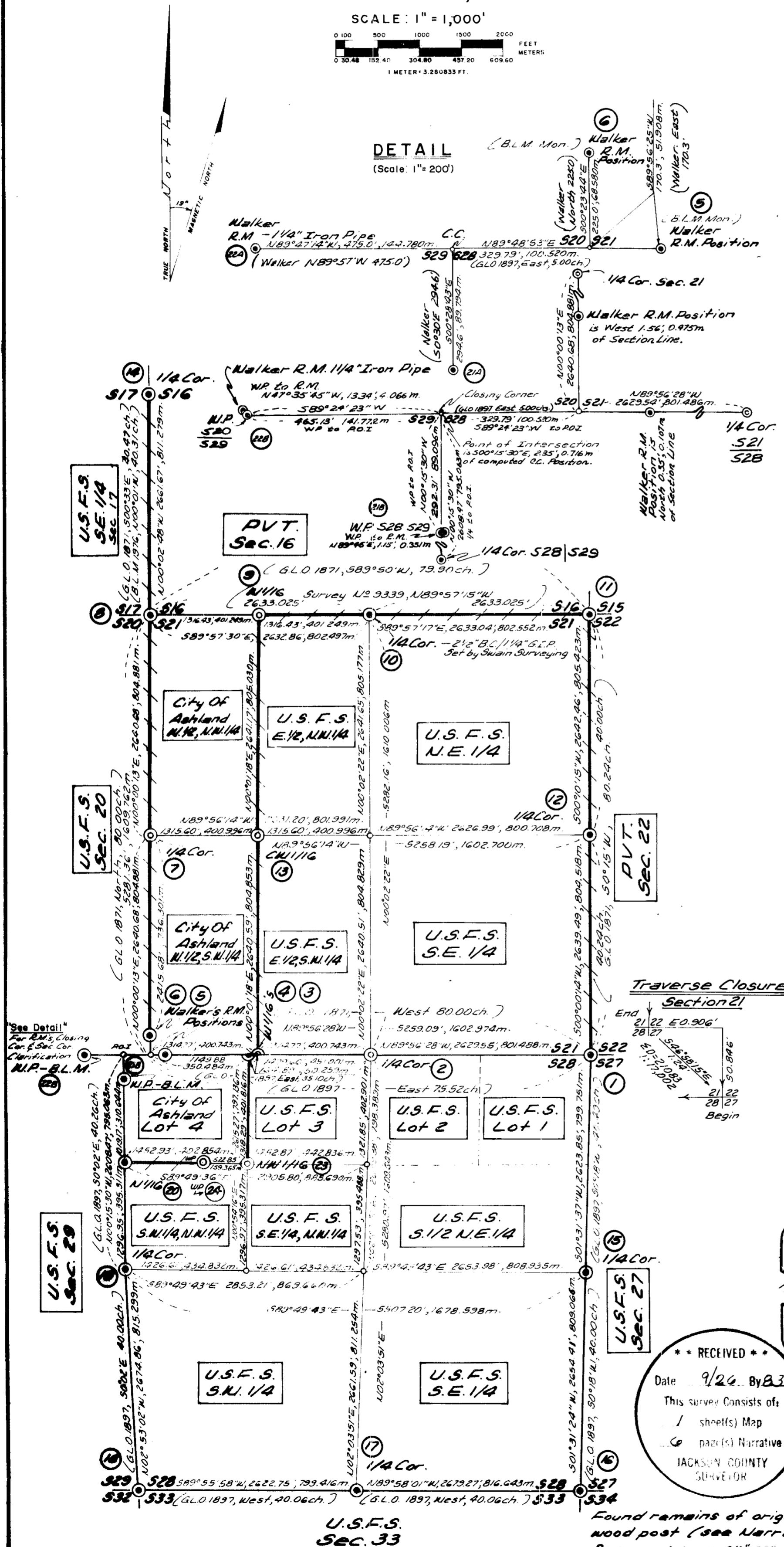
Date 9/26 By B3
This survey consists of:
- sheets/ Map
- page(s) Narrative
JACKSON COUNTY SURVEYOR

C.O.R. Date

U.S.F.S. CONTRACT No 53-04H1-3-9218N

CONTRACTOR IDENTIFICATION

CHICKERING-GREEN EMPIRE, INC.
360 S.E. 'H' STREET SUITE B
GRANTS PASS, OREGON 97626 ph 503-474-2035



RECEIVED
Date 9/26 By B3
This survey consists of:
- sheets/ Map
- page(s) Narrative
JACKSON COUNTY SURVEYOR

Found remains of original wood post (see Narrative)
Re-monumented with 2 1/2" x 30" iron post & brass cap.

21A. RM to CC
 CC
 S29 | S28

F. H. Walker's reference monument to the closing corner of Section 28 and 29, found a 1 1/4" iron pipe projecting 6" above the ground, from which:

- A 16" Cedar bears S28°10'E, 32.2 feet, blazed and healed.
- A 10" Madrone bears N85°25'W, 13.7 feet, blazed and healed.
- A 3" brass cap in concrete marked No. 5 bears N30°24'10"W, 64.77 feet.
- A standard BLM aluminum cap and aluminum post bears S89°47'W, 1.15 feet (See next corner description)

No Cap: Corner diagram only.

21B. T39S R1E
 WP
 S29 | S28
 1983

Found a standard BLM aluminum cap and aluminum post, in a mound of rock, projecting 8" above the ground, marked as shown, from which:

- A 19" DF bears S01°50'E, 7.3 feet, scribed WP BT
- A 3" brass cap in concrete marked No. 5 bears N29°31'40"W, 64.19 feet.
- A 1 1/4" iron pipe bears N89°47'E, 1.15 feet. (F. H. Walker R.M.)

22A. RM to CC
 CC
 S29 | S28

F. H. Walker's reference monument to the closing corner of Section 28 and 29, found a 1 1/4" iron pipe, projecting 4" above the ground, from which:

- A 48" DF bears S28°30'W, 9.0 feet, blazed and healed. (Scribed WP BT on the Easterly side)

No cap: Corner diagram only.

A standard BLM aluminum cap and aluminum post bears S47°35'45"E 13.34 feet, (See next corner description).

22B. T39S R1E
 WP
 S20
 S29
 1983

Found a standard BLM aluminum cap and aluminum post, flush with the ground, marked as shown, from which:

- A 48" DF bears N88°00'W, 14.0 feet, scribed WP BT on Easterly side, blazed and healed on Northerly side.
- A 1 1/4" iron pipe, projecting 4" above the ground bears S47°35'45"E 13.34 feet

23. T39S R1E
 NW 1/16 S28
 |
 |
 1983
 RPLS 601

The Northwest 1/16 corner of Section 28, set a 2 1/2" brass cap on a 2 1/2" x 30" iron post at the intersection point, 20" in the ground, in a mound of rocks, marked as shown, from which:

- A 5' x 10' ±, 3' high rock outcrop bears N60°29'E, 53.03 feet, marked with chisled "X" on top and chisled B0 on Southwest face.
- A 16" PP bears S33°35'E, 105.8 feet, scribed NW 1/16 S28 BT

24. T39S R1E
 WP
 LOT 4
 S28 | SW NW
 1983
 RPLS 601

Set a 2 1/2" brass cap marked as shown on a 2 1/2" x 30" iron post, 24" in the ground in a mound of rocks, on line N89°49'36"W, 522.85 feet from the NW 1/16th corner of Section 28, from which:

- A 9" DF bears S46°10'E, 24.6 feet, scribed WP BT.

REGISTERED
 PROFESSIONAL
 LAND SURVEYOR
Malcolm N. Clark
 OREGON
 JULY 12, 1983
 MALCOLM N. CLARK
 501

** RECEIVED **
 Date 9/26/83 By sk
 This survey consists of:
1 sketch Map
6 page(s) Narrative
 JACKSON COUNTY
 SURVEYOR

September 15, 1983

15. T39S R1E
1/4
S28 | S27
1967
- The 1/4 corner common to Section 27 and 28, found a standard BLM brass cap and iron post, projecting 6" above the ground marked as shown, in a mound of rocks, from which:
- A 50" SP stump bears N80°E, 79.0 feet, blazed and healed.
A 14" PP bears N88°15'E, 48.6 feet, scribing visible.
A 13" DF bears N60°30'W, 3.4 feet, blazed and healed.
A 24" PP opened bears N20°20'W, 17.0 feet, scribing visible.
16. T39S R1E
S28 | S27
S33 | S34
1983
RPLS 601
- The corner common to Section 27, 28, 33 and 34, found the remains of the wooden post set by Fletcher in 1896 at record distance from the NW BT.
- Set a 2 1/2" brass cap, marked as shown on a 2 1/2" x 30" iron pipe 24" in the ground, in a mound of rocks, from which:
- Original BT's:
- A 6" pine windfall, scribed T39S R1E S27 BT, position not recoverable
A 10" Madrone snag bears N31°30'W, 34.3 feet (record N34°W, 52 links, 34.3 feet).
- New BT's marked:
- An 18" DF bears N08°05'E, 17.4 feet, scribed T39S R1E S27 BT
A 21" DF bears S57°50'E, 31.3 feet, scribed T39S R1E S34 BT
A 16" SP bears S04°20'W, 57.5 feet, scribed T39S R1E S33 BT
A 12" DF bears N35°50'W, 34.5 feet, scribed T39S R1E S28 BT
17. T39S R1E
S28
1/4 S33
1967
- The 1/4 corner common to Section 28 and 33, found a standard BLM brass cap on an iron pipe, marked as shown, in a mound of rocks, projecting 18" above the ground, from which:
- A 26" PP bears S24°W, 15.7 feet, opened, scribing visible.
A 33" SP bears N44°W, 18.7 feet, opened, scribing visible.
18. T39S R1E
S29 | S28
S32 | S33
1967
- The corner common to Section 28, 29, 32, 33, found a standard BLM brass cap and iron pipe, marked as shown, in a mound of rocks, from which:
- A 7" TF bears N40°55'E, 5.8 feet, blazed and healed.
A 12" Madrone bears N60°20'E, 37.0 feet, opened, scribing visible.
A 46" DF bears S22°20'E, 47.2 feet, blazed and healed.
A 20" rotten fir stump bears S25°10'W, 37.5 feet, scribing visible.
A 6" TF bears S40°40'W, 9.6 feet, blazed and healed.
A 33" PP snag bears N40°05'W, 26.6 feet, scribing visible.
An 11" DF bears N25°15'W, 17.8 feet, blazed and healed.
19. T39S R1E
1/4
S29 | S28
1983
LS 1071
- The 1/4 corner common to Sections 28 and 29, found a 2 1/2" brass cap on a 2 1/2" iron post in a mound of rock, projecting 6" above the ground, marked as shown, from which:
- A 17" Fir bears S79°E, 12.9 feet, scribed 1/4 S28 LS 1071 BT
A 38" Pine stub, bears S37°E, 25.9 feet to face, scribing visible.
A 40" Pine stub bears S57°E, 29.7 feet to face, blazed and open.
A 6" Fir bears N24°W, 9.0 feet, scribed 1/4 S29 LS 1071 BT
20. T39S R1E
N 1/16
S29 | S28
1983
- The North 1/16 corner common to Section 28 and 29 found a standard BLM aluminum cap and aluminum post projecting 6" above the ground, in a mound of rocks, marked as shown, from which:
- A 12" Fir bears N82°10'E, 25.0 feet, scribed N1/16 S28 BT
A 12" Fir bears S34°35'W, 6.0 feet, scribed N 1/16 S27 BT

8. T39S R1E
S17 | S16
S20 | S21
1960
- The corner common to Sections 16, 17, 20 and 21. Found a standard BLM brass cap and iron post, in a mound of rocks, marked as shown, from which:
- A 20" PP bears N45°20'E, 78.9 feet, scribing visible.
An 8" DF bears S33°30'E, 82.2 feet, blazed and healed.
A 26" DF bears S01°10'W, 84.8 feet, blazed and healed.
A 9" DF snag bears N39°40'W, 38.5 feet, scribing visible.
An 8" Madrone snag bears N30°25'W, 28.4 feet, scribing visible.
- New BT marked:
A 22" PP bears N44°20'W, 64.7 feet, scribed T39S R1E S17 BT
9. T39S R1E
W1/16 $\frac{S16}{S21}$
1983
RPLS 601
- The West 1/16 corner common to Sections 16 and 21. Set at proportionate distance, a 2 1/2" brass cap on a 2 1/2" x 30" iron post, 24" in the ground, in a mound of rocks, marked as shown, from which:
- A 10" DF bears N86°50'E, 48.2 feet, scribed W 1/16 S16 BT
An 11" DF bears S24°35'W, 10.2 feet, scribed W 1/16 S21 BT
10. SWAIN SURVEYING
T39S R1E
1/4 $\frac{S16}{S21}$ COR
LS 759 1982
- The 1/4 corner common to Sections 16 and 21. Found a 2 1/2" brass cap on an 1 1/4" iron pipe, marked as shown, in a mound of rocks, projecting 6" above the ground, from which:
- A B.O., an "X" in top of a rock outcrop bears N19°32'30"E, 48.64 feet.
An 8" DF bears S75°30'W, 22.7 feet, scribed 1/4 S21 BT
A 12" DF bears N33°00'W, 38.2 feet, scribed 1/4 S16 BT
11. T39S R1E
S16 | S15
S21 | S22
1967
- The corner common to Sections 15, 16, 21 and 22, found a standard BLM brass cap and iron pipe, marked as shown, projecting 8" above the ground, from which:
- A 12" DF bears N84°15'E, 31.2 feet, blazed and healed.
A 10" DF bears S33°35'E, 5.5 feet, blazed and healed.
A 13" Madrone bears S01°50'W, 28.4 feet, blazed and healed.
A 13" DF bears S23°40'W, 8.5 feet, blazed and healed.
A 6" BO bears N72°50'W, 17.6 feet, blazed and healed.
A 14" DF bears N52°35'W, 60.4 feet, blazed and healed.
12. T39S R1E
1/4
S21 | S22
1967
- The 1/4 corner common to Sections 21 and 22, found a standard BLM brass cap and iron pipe, marked as shown, projecting 8" above the ground, from which:
- A 10" DF bears N39°20'E, 16.7 feet, blazed and healed.
A 6" windfall, the root hole of which bears S72°40'W, 9.4 feet, scribed 1/4 S21 BT.
A 19" BO bears S83°20'W, 57.4 feet, lower blaze open, upper healed.
13. T39S R1E
W 1/16
C — — C
S21
1983
RPLS 601
- The CW 1/16 corner of Section 21, set at proportionate distance a 2 1/2" brass cap on a 2 1/2" x 30" iron post, 24" in the ground, in a mound of rocks, marked as shown, from which:
- A 14" DF bears S69°15'E, 34.5 feet, scribed CW 1/16 S21 BT
A 15" DF bears S23°40'W, 15.3 feet, scribed CW 1/16 S21 BT
A 2" iron pipe, loose, projecting 24" bears N71°24'W, 168.0 feet.
14. 1/4
S17 | S16
T39S R1E
1976
1960
- The 1/4 corner common to Section 16 and 17, found a standard BLM brass cap, 12" below the surface, marked as shown, from which:
- An 18" Cedar stump, broken, bears N05°50'E, 168.8 feet, no scribing.
A hub tack in a lead plug in granite outcrop bears N12°57'20"E, 51.12 feet.
A 32" Maple, sawn out, bears S30°45'W, 76.4 feet, no scribing.
A Fir bears N70°00'W, 31.3 feet, blazed and healed.(snag)

CORNER DESCRIPTIONS

NOTE: All BT's have: a 6" red painted band, BT tags and either an Attention Sign or Land Survey Monument Sign.

New BT's marked have a 3/4" brass washer marked RLS 601 on the lower blaze.

1. T39S R1E
S21 | S22
S28 | S27
1967
The corner common to Section 21, 22, 27 and 28, found standard BLM brass cap and iron pipe in a mound of rock, projecting 8" above the ground, marked as shown, from which:
A 14" rotten stump bears N07°15'E, 25.8 feet.
A 10" DF bears N21°15'E, 33.0 feet, blazed and healed.
An 11" DF bears S57°05'E, 23.7 feet, blazed and healed.
A 14" DF bears S23°25'W, 9.5 feet, blazed and healed.
An 11" DF bears N31°25'W, 42.5 feet, blazed and healed.
A 33" PP bears N13°10'W, 31.4 feet, blazed and healed.
2. T39S R1E
1/4 S21
S28
1983
RPLS 601
The 1/4 corner common to Section 21 and 28, at proportionate distance. Set a 2 1/2" brass cap on a 2 1/2" x 30" iron post, 20" in the ground, in a mound of rock, marked as shown, from which:
A 12" DF bears S49°30'E, 13.2 feet, scribed 1/4 S28 BT
A 12" DF bears N08°40'W, 26.6 feet, scribed 1/4 S21 BT
3. T39S R1E
S21
W 1/16
1983
RPLS 601
The West 1/16 corner for Section 21 at proportionate distance. Set a 2 1/2" brass cap on a 2 1/2" x 30" iron post, 24" in the ground, in a mound of rocks, marked as shown, from which:
A 17" DF bears N53°00'E, 54.6 feet, scribed W 1/16 S21 BT
A 16" PP bears N15°25'W, 32.2 feet, scribed W 1/16 S21 BT
4. T39S R1E
W 1/16
S28
1983
RPLS 601
The West 1/16 corner for Section 28 at proportionate distance. Set a 2 1/2" brass cap on a 2 1/2" x 30" iron post, 24" in the ground, in a mound of rock, marked as shown, from which:
An 8" DF bears S58°55'E, 43.7 feet, scribed W 1/16 S28 BT
A 9" DF bears S19°05'W, 19.7 feet, scribed W 1/16 S28 BT
A 2" iron pipe, projecting 12", bears N46°50'15"E, 10.9 feet.
A 2" iron pipe, projecting 16", bears N84°51'40"W, 211.96 feet.
5. T39S R1E
S21
← RM
1983
Found F.H. Walker's reference position, a standard BLM aluminum cap and aluminum pipe, in a mound of rocks, projecting 15" above the ground, marked as shown, North 0.35 feet of the line, from which:
A 25" PP bears N18°40'E, 32.3 feet, scribed RM BT
A 9" PP bears S56°50'E, 71.0 feet, scribed RM BT
6. T39S R1E
S20
RM
↓
1983
Found F. H. Walker's reference position, a BLM aluminum cap on an aluminum pipe, in a mound of rock, projecting 8" above the ground, marked as shown, 1.56 feet West of the true line, from which:
A 32" DF bears N13°05'E, 10.4 feet, blazed and healed.
A 28" DF bears N08°20'W, 26.7 feet, blazed and healed.
Reeder Reservoir brass cap Number 11 bears S16°09'45"W, 140.68 feet.
Reeder Reservoir brass cap Number 12 bears S19°44'27"E, 94.69 feet.
A concrete post, 18" x 18" projecting 36" with a brass plate, the point of the "V" in the brass plate bears S64°41'24"E, 106.41 feet.
7. T39S R1E
1/4
S20 | S21
1983
RPLS 601
The 1/4 corner common to Section 20 and 21. Set at midpoint, proportionate distance, a 2 1/2" brass cap on a 2 1/2" x 30" iron post, 24" in the ground, in a mound of rock, marked as shown, from which:
A 10" DF bears S73°05'E, 41.4 feet, scribed 1/4 S21 BT
A 10" DF bears N03°40'W, 55.6 feet, scribed 1/4 S20 BT

along the line between Section 21 and 28 was placed at midpoint between the 1/4 corner common to Sections 21 and 28 and the closing corner established by Fletcher for Sections 28 and 29. The 1/4 corner between Sections 20 and 21 was placed at midpoint between the corner common to Sections 20 and 21 and the corner common to Sections 16, 17, 20 and 21. The West 1/16 corner between Section 16 and 21 was placed at midpoint between the corner common to Sections 16, 17, 20 and 21 and the 1/4 corner common to Sections 16 and 21 as established by Everett Swain in survey 9339. The Northwest 1/4 of Section 28 was subdivided, based on Fletcher's plat of Section 28 and the bona fide rights of the patent issued for Lot 4, Section 28.

The topographic calls made by Turner and Howard in 1871 along the North and South lines of Section 21 have large errors when compared to the field positions of various ridges and draws. There are two ridges in the vicinity of the 1/4 corner between Sections 21 and 28, one at 37.5 chains and one at 44.75 chains. The plat distance for this line is 80.00 compared to a remeasured distance of 79.68 chains. The proportioned position for the 1/4 corner common to Section 21 and 28, falls 2.4 chains West of the ridge at 37.5 chains, and 4.9 chains East of the ridges at 44.75 chains. Turner and Howard's field notes call for a ridge at 41.00 chains, 1.00 chains West of the 1/4 corner.

The topographic calls along the line between Sections 16 and 21 contain the same type difference, with differences up to as much as 6.5 chains. There is no consistent difference in the topographic calls along these lines to allow the isolation of blunders. I chose to disregard the topographic calls along the North and South lines of Section 21 because of the inconsistent large difference between the field notes and actual ground locations. The topographic calls along the East and West lines of Section 21 match the ground location, varying from a maximum difference of 0.5 chains to 0.03 chains. The call to Ashland Creek at 33.50 chains, Ashland Creek is actually at 33.2 chains, and another call to Ashland Creek at 51.30 chains and Ashland Creek is actually at 51.1 chains. The proportioned position of the 1/4 corner between Sections 20 and 21 is consistent with these topographic calls.

The position for the original corner of Sections 20 and 21, now located in Reeder Reservoir was determined at record distance, 225.0 feet South and 170.3 feet West of the references established by F. H. Walker, in 1927. The position for the original closing corner of Sections 28 and 29, now located in Reeder Reservoir, was determined at record distance, 294.6 feet North and 475.0 feet East of the references established by F. H. Walker, in 1927.

Bearing Base: Bearings of this survey are based on a solar observation taken 790 feet North of the corner common to Sections 21, 22, 27 and 28 and verified with additional solar observations taken at Reeder Reservoir, near the corner common to Sections 16, 17, 20 and 21 and near the corner common to Sections 15, 16, 21 and 22.

SURVEY NARRATIVE
ORS 209.250

Survey for: Rogue River National Forest
1319 East McAndrews Road
Medford, Oregon 97504

Survey by: Chickering-Green Empire, Inc.
360 S. E. "H" Street
Grants Pass, Oregon 97526
(Malcolm N. Clark, RPLS 601, OR)

Equipment: Wild T-16 and Wild DI-4 Distomat

Date: May 16 to September 1, 1983

Purpose: To post and blaze the U. S. Forest Service property lines
and to monument the U. S. Forest Service property corners.

Procedure: I retraced the exterior lines of Sections 21 and 28 and the South 1/2 of the line between Sections 16 and 17. The original positions of the North, West and South 1/4 corners of Section 21 had not been recovered prior to this survey. I found no original evidence of any of these 1/4 corners during the retracement of Section 21. The retraced bearings and distances in Section 21 match Turner and Howard's original record of Section 21 within acceptable limits. The retraced bearings and distance in Section 28 do not match Fletcher's record of Section 28. Distances vary from the record up to 4 plus chains and the differences in bearings is up to approximately three degrees (3°). Fletcher's distance from the corner common to Section 20 and 21 to the corner common to Sections 21, 22, 27 and 28 is 75.52 chains, Turner and Howard's is 80.00 chains and the retraced distance is 79.68 chains. It is my opinion that Fletcher did not retrace the line between Section 21 and 28 as his notes show, but fabricated that retracement to close his survey of Section 28, and that his plat has a blunder in the distance along this line. Fletcher's contract for the completion survey of Township 39 South, Range 1 East under contract Number 663 did not include the retracement or the resurvey of the line between Sections 21 and 28. Turner and Howard's plat of Section 21 is the more accurate plat and does not contain any blunders, while Fletcher's plat of Section 28 does contain several blunders. The West 1/2 of the Northwest 1/4 of Section 21 was patented on April 13, 1889, the West 1/2 of the Southwest 1/4 of Section 21 was patented on April 11, 1900 and Lot 4 of Section 28 was patented on December 31, 1904.

I used Turner and Howard's plat of Section 21 as the basis proportioning the 1/4 corner between Sections 21 and 28. The 1/4 corner between Section 21 and 28 was placed at midpoint between the corner common to Sections 21, 22, 27 and 28, and the corner common to Section 20 and 21. This position protects the bona fide rights of the patents in Section 21, Turner and Howard's plat and Fletcher's plat as far as the 1/4 corner is common to Sections 21 and 28 as he shows on his plat. This procedure does not protect Fletcher's distance along the line between Sections 21 and 28, but since Fletcher's distance along this line contains a significant blunder, this distance has a lower weight than the other factors even though Fletcher's plat is the most recent record of Section 21 and 28. The West 1/16 corner of Section 21 along the line between Sections 21 and 28 was placed at mid point between the 1/4 corner common to Sections 21 and 28 and the corner common to Sections 20 and 21. The West 1/16 corner of Section 28