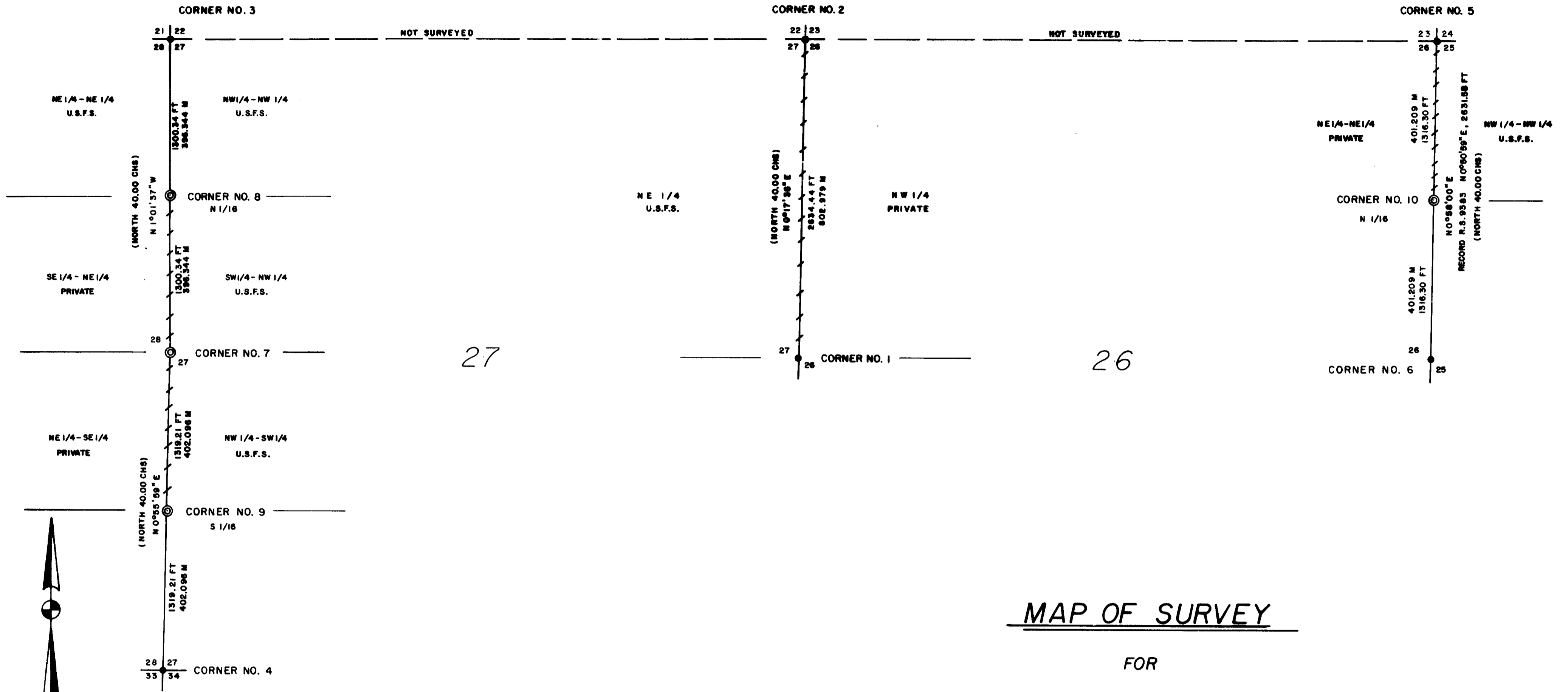


T 40S, R 1W, W.M.



SCALE 1"=600'

MAP OF SURVEY

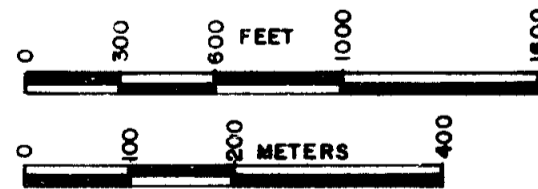
FOR

ROGUE RIVER NAT'L FOREST
P.O. BOX 520
MEDFORD, ORE. 97501

OF

SECTION LINES BETWEEN SECTIONS 28 & 27,
THE NE 1/4 SEC. 27 & NW 1/4 SEC. 26 AND THE
NE 1/4 SEC. 26 & NW 1/4 SEC. 25, T40S, R1W, W.M.

JACKSON COUNTY, ORE.



- LEGEND -

- BRASS CAP IRON PIPE FOUND
- ⊙ SET 2-1/2"x30" GALV. IRON PIPE WITH 2-1/2" BRASS CAP
- PROPERTY LINE BLAZED AND POSTED THIS SURVEY

FT - FEET M - METERS R.S. - RECORDED SURVEY
CHS - CHAINS () - S.L.O. RECORD, 1885

- NOTES -

BASIS OF BEARINGS - SOLAR OBSERVATIONS
FOR HISTORY OF SURVEYS AND CORNER DESCRIPTIONS, SEE NARRATIVE

SURVEYED JUNE-AUGUST 1983 BY:

JERRY R. SWANSON, P.L.S.
P.O. BOX 4387
MEDFORD, OREGON 97501

CONTRACT NO. 43-04N7-3-836
WAGNER GAP CADASTRAL SURVEY

CERTIFICATE OF SURVEY

I, JERRY R. SWANSON, A REGISTERED PROFESSIONAL LAND SURVEYOR IN THE STATE OF OREGON, HEREBY CERTIFY THAT THIS PLAT AND NOTES HEREON, AND ATTACHED, ARE A CORRECT REPRESENTATION OF A SURVEY I PERFORMED IN JUNE-AUGUST 1983 FOR THE U.S.F.S. IN ACCORDANCE WITH THE STATUTES OF THE STATE OF OREGON AND THE ARTICLES OF MY CONTRACT.

JERRY R. SWANSON, P.L.S. NO. 760

ACCEPTED AND APPROVED FOR THE U.S.F.S.

Randall M. Zanon
DATE 8/22-83

** RECEIVED **
Date 8/24/83 By SK
This survey consists of:
1 sheet(s) Map
1 parcel Narrative
JACKSON COUNTY SURVEYOR

REGISTERED PROFESSIONAL LAND SURVEYOR

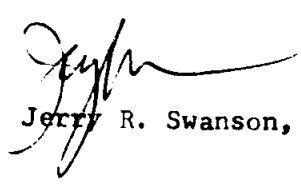
OREGON JULY 8, 1966
JERRY R. SWANSON
760

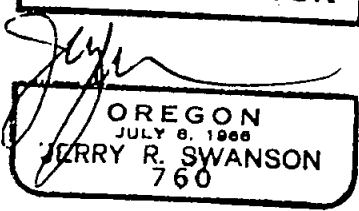
HISTORY OF SURVEYS:

All lines in this survey were originally surveyed by Rufus Moore in July 1883.
Corner No. 1 - remonumented by B.L.M. in 1963 from original evidence;
Corner No. 2 - remonumented by Jackson County Surveyor in 1973 from original evidence;
Corner No. 3 - remonumented by Jackson County Surveyor in 1973 from original evidence;
Corner No. 4 - remonumented by Jackson County Surveyor in 1973 from original evidence;
Corner No. 5 - proportioned position by B.H.W. Engineering, P.L.S. No. 839, per recorded survey No. 9383, Jackson County Surveyors Office, in 1982;
Corner No. 6 - corner remonumented by Jackson County Surveyor in 1981 from original evidence;
Corner No. 7 - corner remonumented by writer from evidence found by Tom Newcomb, August, 1983 per details this survey, from original evidence.
Corners No. 8, 9 and 10 - corners set by this survey for U.S. Forest Service.
Additional previous surveys on lines involved this survey, shown on Map of Survey.

Date of survey: June to August, 1983.
Surveyed by: Jerry R. Swanson, P.L.S.
P. O. Box 4387
Medford, Oregon 97501
(503) 770-5449

SURVEY CONTRACT NO. 43-04N7-3-635 Wagner Gap Cadastral Survey.


Jerry R. Swanson, P.L.S.

REGISTERED
PROFESSIONAL
LAND SURVEYOR

OREGON
JULY 6, 1906
JERRY R. SWANSON
760

** RECEIVED **
Date 8/24/83 By SK
This survey consists of:
1 sheet(s) Map
1 page(s) Narrative
JACKSON COUNTY
SURVEYOR

CORNER NO. 5 - found a 2½" G.I.P. with 2½" brass cap marked as shown, exposed
 7" in a small mound of stone

T40S R1W
 S23 | S24
 S26 | S25
 RLS 839
 1982

THIS IS A PROPORTIONAL CORNER SET
 ON SURVEY Recorded as R.S. 9383

from which:

- a 15" Fir bears N48°E, 66.5 feet, scribing visible
- a 10" Fir bears S35-¾°E, 37.2 feet, scribing visible
- a 17" Fir bears S41°W, 22.5 feet, scribing visible
- a 12" Fir bears N17°W, 58.9 feet, scribing visible

Note: all BTs have a ¾" brass washer stamped 'RLS 839' set at bottom of blazes

CORNER NO. 6 - found a 1" G.I.P. with 2½" brass cap marked as shown, Jackson County
 Surveyor's Office, exposed 7" in small mound of stone

T40S ½S R1W
 26 | 25
 CS
 1981

from which:

- a 17" Fir bears N26°E, 18.0 feet, partially blazed and healed
- a 30", more or less, Fir stump bears N76½°W, 33.0 feet, rotten
- a 13" Fir bears N25°W, 45.8 feet, scribing visible

CORNER NO. 7 - found original BT, being a 42" Fir stump with scribing, direct and
 reverse, being '1/4', partial 'S' and 'BT', from which I set a 2½"x30"
 G.I.P. with 2½" brass cap marked, exposed 4"
 (corner lies on Ely shoulder old cat road)
 Mound of stone around monument 2.2'x2.0'x1.3' high

T40S R1W
 ½
 S28 | S27
 1983
 PLS 760

from which:

- The original 40" Fir BT, now a 42" Fir stump, described above, bears record S63°E, 17.82 feet from face of scribing
- New BTs taken, a 17" Fir bears S47½°E, 27.8 feet, scribed '1/4S27 BT'
- a 9" Cedar bears S57°W, 33.0 feet, scribed '1/4S28 BT'

Both BTs have a ¾" brass washer stamped 'LS 760' nailed in blaze.

NOTE: this corner was recovered by Tom Newcomb, August 4, 1983; witnesses: Richard
 Templin, Brian Swanson and Jerry Swanson.

CORNER NO. 8 - at the mid-point position between the W½ and NW corner of Section 27,
 set a 2½"x30" G.I.P., exposed 3" , with 2½" brass cap,
 set in a 2.5'x2.0'x1.8' high mound of stones
 (corner falls in rock sluff area from cliffs)

N 1/16
 S28 | S27
 1983
 PLS 760

from which:

- a 9" Fir bears N86°E, 2.5 feet, scribed 'N 1/16 S27 BT'
- a 10" Fir bears N31-¾°W, 20.9 feet, scribed 'N 1/16 S28 BT'

Both BTs have ¾" brass washers stamped 'LS 760' nailed at bottom of blazes.

CORNER NO. 9 - at the mid-point position between the SW corner and the W½ corner of
 Section 27, set a 2½"x30" G.I.P. with 2½" brass cap
 Exposed 3" in mound of stone; monument is tipped NEly
 to avoid a large boulder approx. 12-13" deep.
 Mound of stone is 1.5'x1.5'x1' high

S 1/16
 S28 | S27
 1983
 PLS 760

from which:

- a 8" Fir bears N8½°E, 8.6 feet, scribed 'S1/16 S27 BT'
- a 10" Fir bears N35°W, 23.7 feet, scribed 'S1/16 S28 BT'

Both BTs have a ¾" brass washer stamped 'LS 760' nailed at bottom of blazes.

CORNER NO. 10 - at the mid-point position between the W½ corner and the NW corner
 of Section 25, set a 2½"x30" G.I.P. with 2½" brass cap
 Exposed 6" in a 2'x2'x1.5' mound of stone.

N 1/16
 S26 | S25
 1983
 PLS 760

from which:

- a 10" Fir bears N17-¾°E, 60.4 feet, scribed 'N 1/16 S25 BT'
- a 10" Fir bears N77°W, 32.8 feet, scribed 'N 1/16 S26 BT'

Both BTs have ¾" brass Washers stamped 'LS 760' nailed at bottom of blazes.

SURVEY NARRATIVE TO COMPLY WITH O.R.S. 209.250

Survey for: Rogue River National Forest
P. O. Box 520
Medford, Oregon 97501

Survey Location: Section lines between Sections 25 & 26, 26 & 27 and 27 & 28,
all Township 40 South, Range 1 West, Willamette Meridian, Jackson
County, Oregon.

Basis of Bearing: all lines surveyed are based up solar observations at one of
the controlling corners used for the surveys.

Purpose of the survey: to set 6' aluminum posts with boundary signs, blaze and paint
property lines between government and private ownerships; set monuments
for corners not found or as instructed to be set by contract.

Procedures used: all corners were ties by closed traverses; corners set and closed
back to the control traverses. Adjustments used were by Crandall
procedure; lines posted, painted and blazed were established by cardinal
offsets, random to true line.

Equipment used: all lines were ran with a Kern K1A 20 second theodolite and measurements
were made with a Leitz Red Mini E.D.M.; random to true line positions
were made with a steel tape.

CONTROLLING MONUMENTS USED FOR THIS SURVEY:

CORNER NO. 1 - Found standard B.L.M. 2½" G.I.P. with 3½" brass cap marked as shown,
exposed 6" in a mound of stone

	½	
S27	S26	
T40S	R1W	

from which:

1963

- a 24" Fir bears N63°E, 87.0 feet, blazed and healed
- a 16" Fir bears S55°W, 17.7 feet, scribing visible in opened face
- a 24" Fir bears N28½°W, 9.1 feet, blazed and healed
- An alum post with Attention and Boundary Sign bears North 3.0 feet.

CORNER NO. 2 - Found 1" G.I.P. with 2½" brass cap marked as shown, Jackson County
Surveyor's Office, exposed 8" in a mound of stone

T40S	R1W
C.S.	

S22	S23
S27	S26
1973	

from which:

- an 18" Fir bears N66-3/4°E, 58.2 feet, scribing partially visible
- a 58" Fir bears S29½°E, 17.4 feet, blazed and healed
- a 21" Fir bears S10½°W, 38.1 feet, blazed and healed
- a 12" Fir bears N66°W, 75.3 feet, scribing partially visible
- an aluminum post with Attention Sign bears North 3.0 feet.

CORNER NO. 3 - Found 1" G.I.P. with 2½" brass cap marked as shown, Jackson County
Surveyor's Office, exposed 5" in a mound of stone

T40S	R1W
------	-----

S21	S22
S28	S27
CS	
1973	

from which:

- a 36" Fir snag bears N17°E, 20.5 feet to visible scribed face
- a 6" Fir bears N49°E, 17.2 feet, blazed and healed
- a 10" Fir bears S33½°E, 31.5 feet, blazed and healed
- a 10" Fir bears S77½°W, 27.9 feet, blazed and healed
- a Cedar stump bears N41½°W, 52.6 feet, scribing visible
- a 6" Fir bears N35½°W, 18.6 feet, blazed and healed

CORNER NO. 4 - Found 1" G.I.P. with 2½" brass cap, marked as shown, Jackson County
Surveyor's Office, exposed 7" with original stone alongside

T40S	R1W
------	-----

S28	S27
S33	S34

CS
1973

from which:

- a 14" Fir bears N46½°E, 33.3 feet, blazed and healed
- a 4'x4'x2' high boulder with + in top bears S46½°E, 16.2 feet.
- a 23" Fir bears S50½°W, 4.6 feet, blazed and healed
- a 13" Fir bears N42°W, 4.1 feet, blazed and healed