

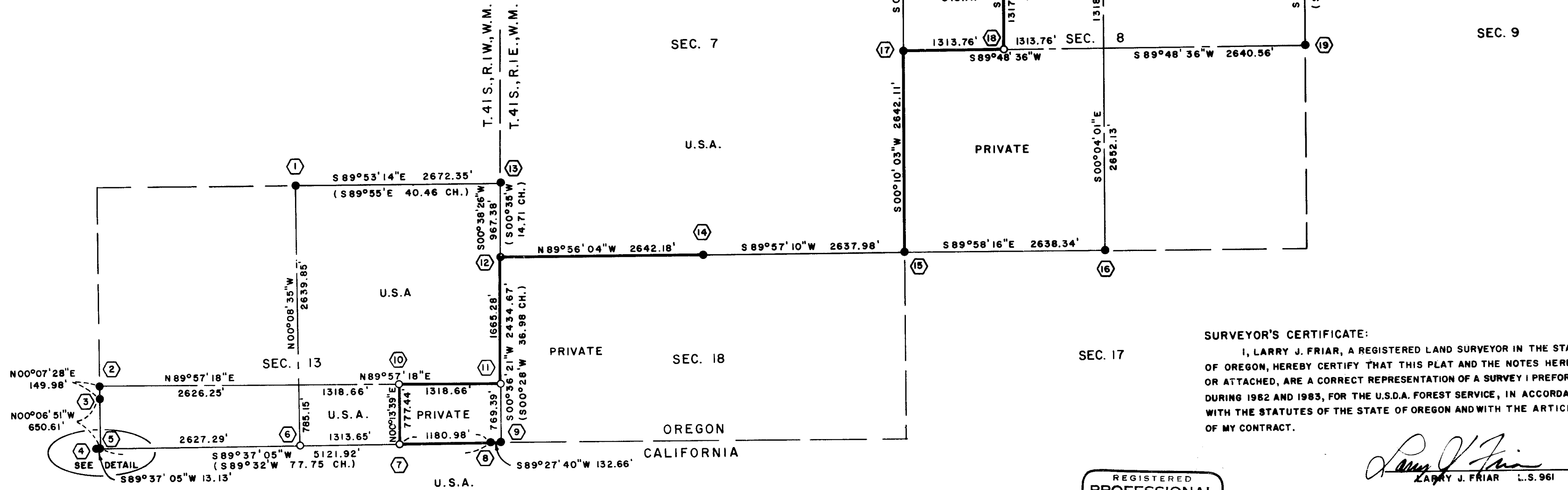
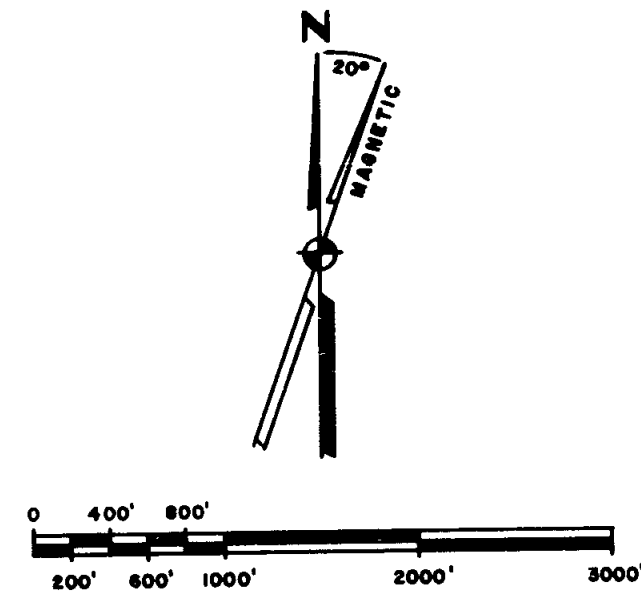
LEGEND:

- =FOUND MONUMENT, SEE NARRATIVE FOR DESCRIPTION.
- =SET 2 1/2" PIPE WITH 3/4" ALUMINUM CAP, SEE NARRATIVE.
- =U.S.F.S. BOUNDARY LINES WHICH HAVE RED PAINTED BLAZED TREES AND U.S.F.S. POSTS.
- ()=ORIGINAL GOVERNMENT RECORD.

BASIS OF BEARINGS:

GRID BEARINGS ORIGINATING FROM U.S.C. & G.S. STATIONS DUTCHMAN PEAK LOOKOUT AND ASHLAND PEAK, ROTATED COUNTER CLOCKWISE 01° 30' 57" TO TRUE MERIDIAN BEARING.

TO CONVERT FEET TO METERS DIVIDE DISTANCE (IN FEET) BY 3.28083333.



SURVEYOR'S CERTIFICATE:

I, LARRY J. FRIAR, A REGISTERED LAND SURVEYOR IN THE STATE OF OREGON, HEREBY CERTIFY THAT THIS PLAT AND THE NOTES HEREON, OR ATTACHED, ARE A CORRECT REPRESENTATION OF A SURVEY I PERFORMED DURING 1982 AND 1983, FOR THE U.S.D.A. FOREST SERVICE, IN ACCORDANCE WITH THE STATUTES OF THE STATE OF OREGON AND WITH THE ARTICLES OF MY CONTRACT.

Larry J. Friar
LARRY J. FRIAR L.S. 961

REGISTERED
PROFESSIONAL
LAND SURVEYOR

Larry J. Friar
OREGON
JULY 16, 1971
LARRY J. FRIAR
961

** RECEIVED **
Date 8/15/83 By SK
This survey consists of:
1 sheet(s) Map
4 page(s) Narrative
JACKSON COUNTY
SURVEYOR

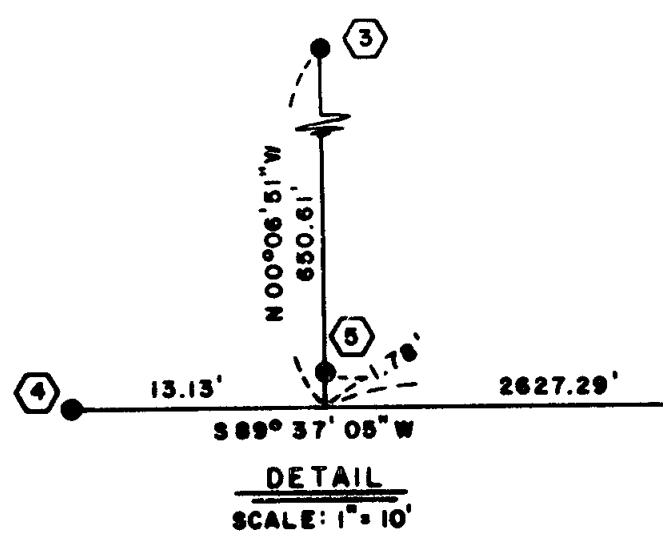
PLAT OF SURVEY
FOR
**U.S. FOREST SERVICE
KLAMATH NATIONAL FOREST**

SECTIONS 5, 8 AND 18, T.41S., R.1E., W.M.
AND SECTION 13, T.41S., R.1W., W.M.
JACKSON CO. SCALE: 1"=1000'
OREGON DATE: JULY, 1983

PREPARED BY: FRIAR-MOFFIT AND ASSOCIATES
MEDFORD, OREGON

HISTORY OF SURVEYS:

THE SOUTH AND WEST LINES OF T.41S., R.1E. WERE SURVEYED BY NATHANIEL FORD, CONTRACT NO. 58, DATED APRIL 18, 1855. THE OREGON-CALIFORNIA STATE LINE WAS FIRST SURVEYED BY DANIEL G. MAJOR, CONTRACT DATED OCTOBER 1, 1867. THE STATE LINE FROM SECTION 15, T.41S., R.1E. TO THE RANGE LINE BETWEEN R.1W. AND R.1E. WAS RESURVEYED BY JESSE APPLIGATE, CONTRACT NO. 144, DATED APRIL 12, 1871. THE SECTIONS IN THE WEST ONE-HALF OF T.41S., R.1E., THE SOUTH BOUNDARY AND THE EAST BOUNDARY OF T.41S., R.1W.; AND SECTIONS 1, 12 AND 13, T.41S., R.1W. WERE SURVEYED BY FRED MENSCH, CONTRACT NO. 716 IN 1906. SECTION 13, T.41S., R.1W. AND THE STATE LINE BETWEEN MILE POST 132 AND MILE POST 140 WERE RESURVEYED BY FRED W. RODOLF UNDER INSTRUCTIONS DATED FEBRUARY 15, 1915. A PORTION OF SECTIONS 5, 8 AND 18 WERE SURVEYED BY RICHARD B. DAVIS, L.S. 827 DURING HIS SURVEY NO. 5483 FOR THE KLAMATH NATIONAL FOREST.



(19) The original corner was a Pine tree as established by Fred Mensch in 1906. In 1963, the B.L.M. established a Brass capped reference monument S46°W 7.0 feet from said 14" Pine tree, from which;

- A 10" Fir bears N05°E 41.4', scar visible.
- A 9" Fir bears S10°W 36.6", scar visible.

(20) Set a 2-1/2" Pipe with a 3" Aluminum cap, stamped:

T41S R1E
NW 1/16 S8
+
LS 961
1983

at the Northwest one-sixteenth (1/16) corner of Section 8, from which;

- A 10" Fir bears N04°W 14.4', scribed NW 1/16, S8, BT.
- A 8" Fir bears S74°E 18.1', scribed NW 1/16, S8, BT.

(21) Set a 2-1/2" Pipe with a 3" Aluminum cap, stamped:

T41S R1E
N1/16 } S8
C }
C }
LS 961
1983

at the center North one-sixteenth (1/16) corner of Section 8, from which;

- A 5" Fir bears S56°E 7.8', scribed CN 1/16, S8, BT.
- A 10" Pine bears S35°W 36.1', scribed CN 1/16 S8, BT.

(22) The original corner was established by Fred Mensch in 1906. In 1963 the B.L.M. remonumented said corner with a Brass capped monument, from which;

- A 10" Fir bears S21°E 18.5', scar visible.
- A 10" Fir bears S28°30'W 13.9', scar visible.
- A 11" Fir bears N05°28'W 15.5', scar visible.
- A 9" Fir bears N19°30'E 12.9', scar visible.

(23) The original corner was established by Fred Mensch in 1906. In 1963 the B.L.M. remonumented said corner with a Brass capped monument, from which there are no suitable trees for bearing trees in the area of the one-quarter corner.

(24) The original corner was established by Fred Mensch in 1906. In 1963 the B.L.M. remonumented said corner with a Brass capped monument, from which;

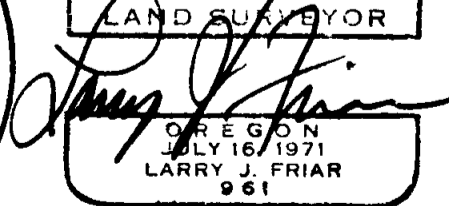
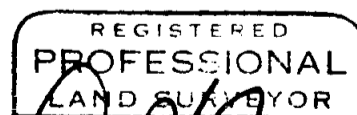
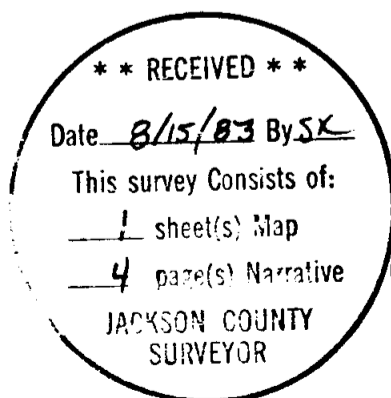
- A 10" Fir bears N46°E 37.0', scar visible.
- A 14" Fir bears S03°E 16.5', scar visible.
- A 10" Fir bears S86°W 18.1', scar visible.
- A 8" Fir bears N50°W 9.5', scar visible.

(25) The original corner was established by Fred Mensch in 1906. In 1963 the B.L.M. remonumented said corner with a Brass capped monument, from which;

- A 14" Cedar bears N31°E 41.6', scar visible.
- A 13" Fir bears S32°W 28.1', scar visible.

DATE: July, 1983
JOB #82-159
KLAMATH NATIOANL FOREST

FRIAR-MOFFIT & ASSOCIATES
717 West 10th, Suite 1
Medford, OR 97501



(11) Set a 2-1/2" Pipe with a 3" Aluminum cap, stamped:

```

      T41S
     RTW|R1E
    1/4S13+
         |
         LS 961
         1981
  
```

at the proportioned East one-quarter (1/4) corner of Section 13 from which;

A 14" Fir bears N09°W 19.7', scribed E1/4 S13, BT.

A 14" Fir bears S66°W 17.7', scribed E1/4 S13, BT.

(12) The original corner was set by Nathaniel Ford in 1855. Fred Mensch resurveyed the Range line in 1906. In 1915 Fred W. Rodolf set a Brass capped monument from which;

A 32" Pine bears N56°E 65.3', scar visible.

A 21" Fir bears S44°E 32.3', scar visible.

(13) The original corner was set by Nathaniel Ford in 1855. Fred Mensch resurveyed the Range line in 1906. In 1915 Fred W. Rodolf set a Brass capped monument from which;

A 24" Fir bears S25°E 7.8', K-tag on tree.

A 28" Fir bears N67°W 6.6', scar visible.

(14) The original corner was set in 1906 by Fred Mensch. A Brass capped monument was set in 1915 by Fred W. Rodolf from which;

A 8" Pine bears N24°E 42.9', scribe visible.

A 22" Pine bears S43°E 60.8', scribe visible.

(15) The original corner was set in 1906 by Fred Mensch. A Brass capped monument was set in 1963 by the B.L.M. from which;

A 8" Fir bears N10°E 39.6', scar visible.

A 13" Fir bears S81°E 32.3', scar visible.

A 12" Fir bears S21°W 37.3', scar visible.

A 6" Fir bears N42°W 34.3', scar visible.

(16) The original corner was a Fir tree as established by Fred Mensch in 1906. Since then, the tree has been fallen. In 1963 the B.L.M. established a Brass capped reference monument East 2.07 feet from the center of the Fir stump, from which;

A 18" Pine bears S26°30'W 37.0', scribe visible.

A 12" Pine bears N19°W 29.1', scar visible.

(17) The original corner was a Pine tree as established by Fred Mensch in 1906. Since then the tree has been fallen. In 1963 the B.L.M. established a Brass capped reference monument South 6.35 feet from the center of the Pine stump, from which;

A 13" Fir bears S79°W 12.5', scar visible.

A 13" Fir bears N13°E 15.2', scar visible.

(18) Set a 2-1/2" Pipe with a 3" Aluminum cap, stamped:

```

      T41S R1E
      W 1/16
     C ———— C
           S 8
          LS 961
          1983
  
```

at the center West one-sixteenth (1/16) corner of Section 8, from which;

A 6" Fir bears S03°W 12.4', scribed CW 1/16, S8, BT.

A 8" Fir bears N71°W 15.4', scribed CS 1/16, S8, BT.

(4) The original mile post 140 monument was set by Daniel G. Major in 1867. In 1915, Fred W. Rodolf set a Brass capped monument at said corner. Said corner has recently been remonumented and new trees scribed the by County Surveyor's Office.

(5) The original closing corner was established by Fred Mensch in 1906. It was remonumented in 1915 by Fred W. Rodolf with a Brass capped monument from which;

- A 8" Fir bears N77°E 12.5', scar visible.
- A 5" Fir bears N65°W 30.1', scribe visible.

(6) Set a 2-1/2" Pipe with a 3" Aluminum cap, stamped:

T41S R1W
1/4 S13
+
CALIF
LS 961
1983

at the proportioned South one-quarter (1/4) corner of Section 13 from which;

- A 12" Pine bears N35°E 22.7', scribed S1/4 S13, BT.
- A 14" Pine bears N72°W 12.6', scribed S1/4 S13, BT.

(7) Set a 2-1/2" Pipe with a 3" Aluminum cap, stamped:

T41S R1W
1/16 S13
+
CALIF
LS 961
1983

at the East one-sixteenth (1/16) corner on the South line of Section 13 from which;

- A 6" Fir bears N65°E 36.6', Scribed E1/16 S13, BT.
- A 12" Fir bears N21°W 35.4', scribed E1/16 S13, BT.

(8) The original mile post 139 was set by Daniel G. Major in 1867. In 1915, Fred W. Rodolf remonumented the corner with a Brass capped monument from which;

- A 24" Stump bears N18°W 23.8', scar visible.
- A 16" Fir bears N46°W 37.7', scar visible.

(9) The original closing corner was set by Jesse Applegate in 1871. Fred Mensch resurveyed the Range line in 1906. Fred W. Rodolf remonumented the corner with a Brass capped monument in 1915 from which;

- A 8" Fir bears N72°E 32.3', scar visible.
- A 6" Fir bears N72°W 47.2', scar visible.

(10) Set a 2-1/2" Pipe with a 3" Aluminum cap, stamped:

T41S R1W
E 1/16
C ———+———— C
S 13
LS 961
1983

at the one-sixteenth (1/16) corner from which;

- A 7" Pine bears S76°E 9.4', scribed CE 1/16 S13, BT.
- A 8" Pine bears S50°W 11.6', scribed CE 1/16 S13, BT.

SURVEY NARRATIVE TO COMPLY WITH ORS 209.250

SURVEY FOR: U.S. Department of Agriculture - Forest Service - Klamath National Forest
1312 Fairlane Road
Yreka, CA 96097

LOCATION: Sections 5, 8 and 18. Township 41 South, Range 1 East, and Section 13, Township 41 South, Range 1 West, Willamette Meridian, Jackson County, Oregon.

PURPOSE: To mark and post the Boundary lines between private land and National Forest land's and to monument certain corners as shown on the annexed map.

PROCEDURE: U.S.C. and G.S. Station, Ashland Peak, was occupied, and using Dutchman Peak Lookout Tower as a back sight, distances and angles were measured either directly to controlling corners or to offsets near the controlling corners. This work was accomplished with a Hewlett Packard 3808 and 3800 Electronic measuring devices and a Kern DKM 2AE, 1-second Theodolite.

Traverses were then ran along lines to be posted and closed to the controlling corners or offset points.

Offsets were then calculated from the traverse to true line. The lines were then blazed and painted and metal posts with Forest Boundary signs were set at intervisible points along the Boundary lines.

The random traverses along property lines were measured using a Kern K1SE Theodolite and DM 500 and a Topcon GTS2 Total Station.

Monuments found and used for control and monuments set by this survey are described as follows:

(1) The original corner was set by Fred Mensch in 1906. In 1915, Fred W. Rodolf set a Brass capped monument at the one-quarter (1/4) corner from which;
A 36" Fir bears S37°E 52.2', scar visible.

Since the BT in Section 12 is down, I scribed:
A 18" Cedar which bears N33°E 19.1', scribed 1/4 S 12 BT.

(2) The original corner was set by Fred Mensch in 1906. In 1915, Fred W. Rodolf set a Brass capped monument at the one-quarter (1/4) corner from which;
A 30" Pine bears N46°45'E 27.4', scribe visible.
A 36" Pine bears N56°30'E 57.8', scar visible.

NOTE: The Brass cap is incorrectly stamped. It is marked as being the W1/4 S 14.

(3) The Brass capped monument was set in 1915 by Fred W. Rodolf from which;
A 20" Pine bears S28°15'W 28.6', scar visible.
A 16" Fir bears S89°15'W 18.1', scar visible.