

9670

FROM NW COR. S 32  
FD 2 1/2" BC ON 1" GIP  
CAP MARKED

BLM

FROM 1/4 S 32  
FD 2 1/2" BC ON 1" I.P. T39S R3W

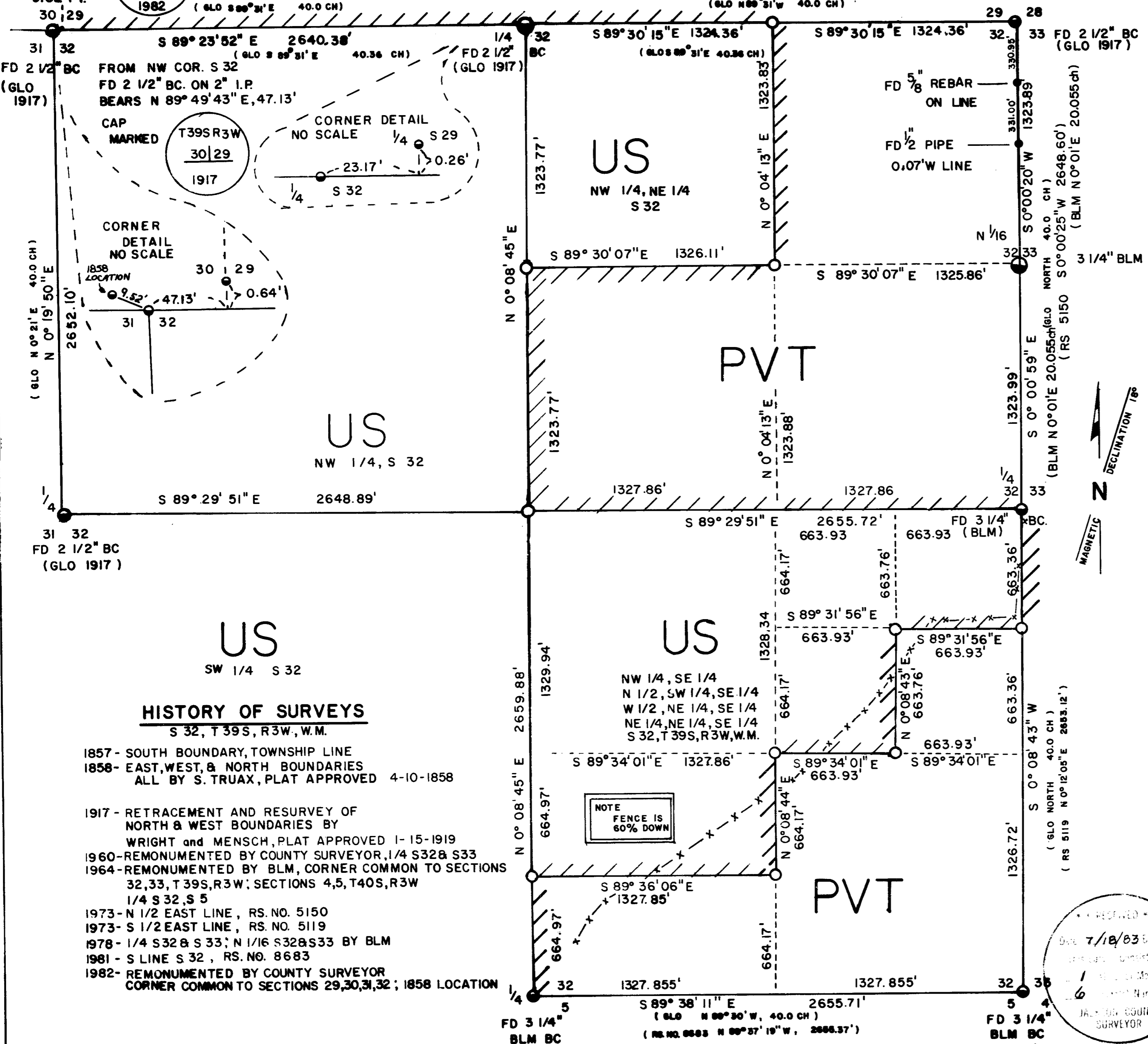
CAP MARKED

BEARS  
N 89° 51' 15" E, 23.17 FT

BEARS  
N 78° 31' 24" W  
9.52 FT.

T39SR3W  
30|29  
31|32  
C S  
1982

T39S R3W  
4|29  
1917



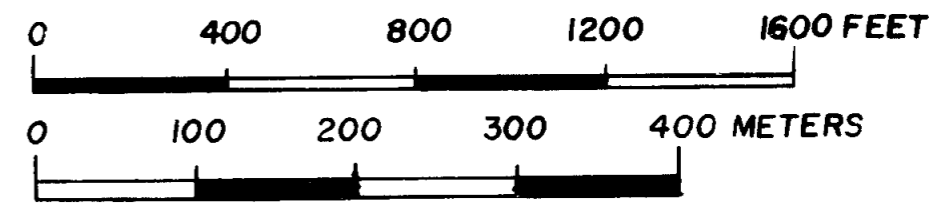
MAP OF SURVEY  
LOCATED IN SECTION 32, T. 39 S., R. 3 W.,  
W.M., JACKSON COUNTY, OREGON.

REGISTERED SURVEY NUMBER \_\_\_\_\_  
FOR THE

U.S. FOREST SERVICE  
FLUMET CADASTRAL CONTRACT NO.  
43-04N7-3-532

LEGEND  
BASIS OF BEARING: SOLAR OBSERVATION  
● FOUND BRASS CAP      / / / - LINE POSTED WITH ALUMINUM POSTS AND SIGNS  
○ SET BRASS CAP, 2 1/2" X 30" BCIP  
SCALE: 1" = 400 FT.      X - X - FENCE LINE  
METER: 3.28083 FT.

DATE: SURVEY STARTED MARCH 29, 1983  
FINISHED MAY 28, 1983.



PROCEDURE:  
ALL CONTROLLING CORNERS WERE ENCOMPASSED  
IN A CLOSED TRAVERSE MADE WITH A TOPCON GTS-10D,  
OFFSETS WERE COMPUTED TO TRUE LINE, AND THE BOUNDARY  
WAS MARKED.

SURVEYOR'S CERTIFICATE  
I, DAVID E. SCOTT, A REGISTERED PROFESSIONAL LAND SURVEYOR  
IN THE STATE OF OREGON, HEREBY CERTIFY THAT THIS PLAT AND  
THE NOTES HEREON OR ATTACHED, ARE A CORRECT REPRESENTATION  
OF A SURVEY PERFORMED UNDER MY DIRECT SUPERVISION DURING  
THE DATES NOTED, IN ACCORDANCE WITH THE STATUTES OF THE  
STATE OF OREGON, AT THE REQUEST OF THE USDA, FOREST SERVICE.

David E. Scott 7/1/83  
DAVID E. SCOTT RLS 1844

RECEIVED  
DATE 7/18/83  
BY [Signature]  
1 [Signature]  
6 [Signature]  
JACKSON COUNTY  
SURVEYOR

REGISTERED  
PROFESSIONAL  
LAND SURVEYOR  
David E. Scott  
OREGON  
DAVID E. SCOTT  
1844

EXAMINED AND ACCEPTED FOR  
THE U.S. FOREST SERVICE  
THIS 15th DAY OF JULY, 1983  
Randall M. [Signature] COR

HISTORY OF SURVEYS  
S 32, T 39 S, R 3 W, W.M.

- 1857 - SOUTH BOUNDARY, TOWNSHIP LINE
- 1858 - EAST, WEST, & NORTH BOUNDARIES  
ALL BY S. TRUAX, PLAT APPROVED 4-10-1858
- 1917 - RETRACEMENT AND RESURVEY OF  
NORTH & WEST BOUNDARIES BY  
WRIGHT and MENSCH, PLAT APPROVED 1-15-1919
- 1960 - REMONUMENTED BY COUNTY SURVEYOR, 1/4 S32 & S33
- 1964 - REMONUMENTED BY BLM, CORNER COMMON TO SECTIONS  
32, 33, T 39 S, R 3 W; SECTIONS 4, 5, T 40 S, R 3 W  
1/4 S 32, S 5
- 1973 - N 1/2 EAST LINE, RS. NO. 5150
- 1973 - S 1/2 EAST LINE, RS. NO. 5119
- 1978 - 1/4 S 32 & S 33; N 1/16 S 32 & S 33 BY BLM
- 1981 - S LINE S 32, RS. NO. 8683
- 1982 - REMONUMENTED BY COUNTY SURVEYOR  
CORNER COMMON TO SECTIONS 29, 30, 31, 32; 1858 LOCATION

SCOTT SURVEYING 22235 SWEETGRASS DR. 389-3880  
BEND, OREGON 97702 83-2

T39S R3W

E 1/16 S32  
1983  
RLS 1844

E 1/16 S32 SET 2 1/2" X 30" BCIP RISING 5"  
FROM WHICH:  
A MADRONE 5" DIA. BEARS S43 1/2° W, 12.2 FEET (E 1/16 S32 BT)  
A FIR 7" DIA. BEARS S26 1/2° E, 16.5 FEET (E 1/16 S32 BT)

T39S R3W

NE 1/16 S32  
1983  
RLS 1844

NE 1/16 S32, SET 2 1/2" X 30" BCIP RISING 6"  
FROM WHICH:  
A PINE 9" DIA. BEARS N64° W, 11.4 FEET, (NE 1/16 S32 BT)  
A MADRONE 5" DIA. BEARS N64° E, 4.3 FEET (NE 1/16 S32 BT)

T39S R3W

N 1/16 S32  
1983  
RLS 1844

CN 1/16 S32, SET 2 1/2" X 30" BCIP RISING 4"  
FROM WHICH:  
A BLACK OAK 10" DIA. BEARS S73° E, 14.3 FEET (CN 1/16 S32 BT)  
A P. PINE 11" DIA. BEARS S 1° E, 36.6 FEET (CN 1/16 S32 BT)

T39S R3W

C 1/4 S32  
1983  
RLS 1844

C 1/4 S32, SET 2 1/2" X 30" BCIP RISING 4"  
FROM WHICH:  
A MADRONE 9" DIA. BEARS N36 1/2° E, 3.0 FEET (C 1/4 S32 BT)  
A MADRONE 7 1/2" DIA. BEARS S59 1/4° E, 27.0 FEET (C 1/4 S32 BT)

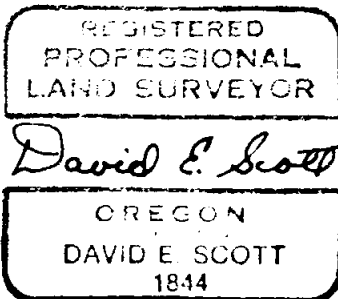
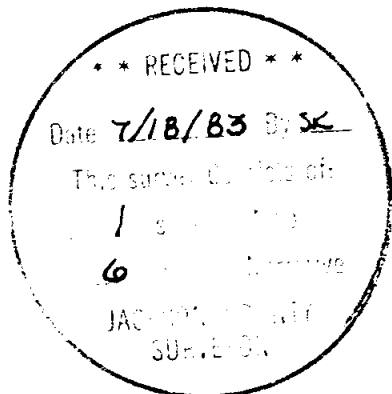
T39S R3W

SS 1/64 S32  
1983  
RLS 1844

CSS 1/64 S32, SET 2 1/2" X 30" BCIP RISING 4"  
FROM WHICH:  
A BLACK OAK 5" DIA. BEARS N 3° W, 2.7 FEET (CSS 1/64 S32 BT)  
A P. PINE 5.7" DIA. BEARS S74 1/2° E, 8.0 FEET (CSS 1/64 S32 BT)

DAVID E. SCOTT SURVEYING  
22235 SWEETGRASS DRIVE  
BEND, OREGON 97702

FIELD WORK BEGAN MARCH 29, 1983  
LAST MONUMENT SET MAY 26, 1983



MONUMENTS SET IN THIS SURVEY

T39S R3W  
NS 1/64  
S 32 | S 33  
1983  
RLS 1844

NS 1/64 CORNER: SET 2 1/2" X 30" BCIP RISING 4"  
FROM WHICH:  
A BLACK OAK 8" DIA. BEARS S 71 3/4° W, 21.5 FT. (NS 1/64 S32B)  
A BLACK OAK 7" DIA. BEARS S 12 3/4° E 54.2 FT. (NS 1/64 S33 B)

T39S R3W  
S 32  
NESE 1/64  
1983  
RLS 1844

NE SE 1/64 CORNER: SET 2 1/2" X 30" BCIP RISING 5"  
FROM WHICH:  
A P. PINE 7" DIA. BEARS N 71 1/4° W, 29.4 FT. (NESE 1/64 S32 BT)  
A P. PINE 7" DIA. BEARS S 4 1/4° W, 11.7 FT. (NESE 1/64 S32 BT)

T39S R3W  
S32  
CESE + 1/64  
1983  
RLS 1844

CE SE 1/64 CORNER: SET 2 1/2" X 30" BCIP RISING 4"  
FROM WHICH:  
A BLACK OAK 6" DIA BEARS N 30° E 30.4 FT. (CESE 1/64 S32 BT)  
A BLACK OAK 7 " DIA BEARS N 32 1/4° W 54.9 FT. (CESE 1/64 S32 BT)

T39S R3W  
SE 1/16 + S32  
1983  
RLS 1844

SE 1/16 CORNER: SET 2 1/2" X 30" BCIP RISING 5"  
FROM WHICH:  
A BLACK OAK 5 1/2" DIA. BEARS N 56 1/2° E 18.2 FT. (SE 1/16 S32BT)  
A P. PINE 9 1/2" DIA. BEARS S 35 1/2° W 11.0 FT. (SE 1/16 S32BT)

T39S R3W  
CSSE 1/64 + S32  
1983  
RLS 1844

CS SE 1/64 CORNER: SET 2 1/2" X 30" BCIP RISING 5"  
FROM WHICH:  
A BLACK OAK 8 1/2" DIA BEARS N 13° E 25.1 FT. (CSSE 1/64 S32 BT)  
A BLACK OAK 7 1/2" DIA BEARS N 55 1/2° W 74.8 FT. (CSSE 1/64 S32BT)

T39S R3W  
 S31 | S32  
 1917

FOUND 2½" GLO BC ON 2" IRON PIPE RISING 8"  
 FROM WHICH:  
 A S. PINE 42" DIA. BEARS S45°W, 133.5 FEET (HEALED BLAZE)  
 A P. PINE 7" DIA. BEARS S38°E, 16.4 FEET (T39SR3WS32 BT)

T39S R3W  
 S30 | S29  
 1917

FOUND 2½" GLO BC ON 2" IRON PIPE RISING 8"  
 FROM WHICH:  
 A FIR 14" DIA. BEARS N21½°W, 39.2 FEET (HEALED BLAZE)  
 A PINE 8" DIA. BEARS N26°E, 44.4 FEET (T39SR3WS29 BT)

T39S R3W  
 ¼ S32  
 1917

FOUND 2½" GLO BC ON 1" IRON PIN RISING 11"  
 FROM WHICH:  
 A FIR 15" DIA. BEARS S25½°W, 30.4 FEET (¼S32 BT)  
 A MADRONE 6" DIA. BEARS S71½°E, 6.7 FEET (¼S32 BT)

T39S R3W  
 ¼ S29  
 1917

FOUND 2½" GLO BC ON 1" IRON PIN RISING 6"  
 FROM WHICH:  
 A MADRONE 8" DIA. BEARS N86°W, 14.1 FEET (¼S29 BT)  
 A B. OAK 6" DIA BEARS N21 ¾°E, 35.9 FEET (¼S29 BT)

T39S R3W  
 S29 | S28  
 S32 | S33  
 1917

FOUND 2½" GLO. BC. ON 2" IRON PIPE RISING 4"  
 FROM WHICH:  
 A PINE 42" DIA. BEARS N29½°E 420.0 FEET (HEALED BLAZE)  
 A PINE 40" DIA. BEARS N20½°W 403.0 FEET (HEALED BLAZE)

T39S R3W  
 N 1/16  
 S32 | S33  
 1978

FOUND 3¼" BLM. BC. ON 2½" IRON PIPE RISING 4"  
 FROM WHICH:  
 A PINE 11½" DIA BEARS S80¼°W, 32.2 FEET (PITCHED OVER)  
 A PINE 12" DIA. BEARS S57¼°E, 41.8 FEET (PITCHED OVER)

T39S R3W  
 ¼  
 S32 | S33  
 1978

FOUND 3¼" BLM BC. ON 2½" IRON PIPE RISING 6"  
 FROM WHICH:  
 A B. OAK 14½" DIA, BEARS N72½°E, 79.1 FEET (HEALED BLAZE)  
 A P. PINE 12½" DIA BEARS S12½°W, 57.5 FEET (HEALED BLAZE)

T39S R3W  
 30 | 29  
 31 | 32  
 c.s.  
 1982

FOUND 2½" BRASS CAP ON 1" IRON PIPE RISING 9"  
 FROM WHICH:  
 A FIR 12" DIA BEARS N72°E 9.7 FEET (CS BT)  
 A FIR 15" DIA BEARS S45°E 12.9 FEET (CS BT)  
 A FIR 7" DIA BEARS S19°W 28.1 FEET (CS BT)  
 A FIR 12" DIA BEARS N36°W 9.1 FEET (CS BT)

## MONUMENTATION AND ACCESSORIES

## LEGEND:

1. BLM BC - A BRASS CAP MARKED ON ITS OUTER EDGE  
U.S. DEPARTMENT OF THE INTERIOR  
BUREAU OF LAND MANAGEMENT
2. GLO BC - A BRASS CAP MARKED ON ITS OUTER EDGE  
U.S. GOVERNMENT LAND OFFICE
3. BCIP - 2½" OUTSIDE DIAMETER BY 30" LONG  
BRASS CAPPED GALVANIZED IRON PIPE
4. ALL BT'S WITH TWO BLAZES, BRASS WASHER STAMPED  
PLS 1844 IN LOWER BLAZE
5. INFORMATION IN BRACKETS ( ) INDICATES TREE SCRIBING
6. BEARING TO TREE TAKEN TO CENTER OF BRASS WASHER
7. BEARING TO ORIGINAL BT'S TAKEN TO CENTER OF TREE  
6" ABOVE GROUND.
8. DISTANCES TAKEN TO CENTER OF TREE 6" ABOVE GROUND
9. DIAMETER OF TREE MEASURED 4.5 FEET ABOVE GROUND.

## MONUMENTS FOUND.

- T39S R3W  

$$\begin{array}{r|l} 32 & 33 \\ \hline 5 & 4 \end{array}$$
 3¼" BLM. BC. 2" BELOW ROAD SURFACE  
 FROM WHICH:  
 THE SOUTHWEST CORNER OF A WOODFRAME HOUSE BEARS  
 N64½°E, 192.0 FEET.  
 CENTER OF A STONE FIREPLACE WITH CHISELED X BEARS  
 S33°E, 187.4 FEET  
 BASE OF A CONCRETE BLOCK CHIMNEY ON MCKEE BRIDGE STORE  
 BEARS N41°W, 61.9 FEET
- T40S R3W  
 1964
- T39S R3W  

$$\begin{array}{r|l} S & 32 \\ \hline \frac{1}{4} & \\ S & 5 \end{array}$$
 3¼" BLM. BC. RISING 19" IN ROCK MOUND ON 2½" GALVANIZED  
 FROM WHICH:  
 IRON PIPE  
 A MADRONE 10" DIAMETER BEARS S89°W, 34.7 FEET (¼S BT)  
 A MADRONE 8" DIAMETER BEARS S26½°E, 18.1 FEET (¼S BT)  
 A PINE 15" DIAMETER BEARS N 6°W, 92.6 FEET (HEALED)
- T 40S R3W  
 1964
- T39S R3W  

$$\begin{array}{r|l} \frac{1}{4} & \\ S & 31 \quad | \quad S32 \\ \hline & 1917 \end{array}$$
 2½" GLO. BC. RISING 14" ON 2" IRON PIPE  
 FROM WHICH:  
 A FIR STUMP 18" DIAMETER BEARS S25°W, 21.5 FEET, ORIGINAL  
 A MADRONE 22" DIAMETER BEARS N85½°E, 56.5 FEET, ROTTED  
 BLAZE  
 A PINE 6" DIAMETER BEARS N85¾°E, 32.4 FEET, (¼S32 BT)  
 A PINE 6" DIAMETER BEARS S51½°W, 7.0 FEET, (¼S31 BT)

## BREAKDOWN OF SUBDIVISIONAL LINES:

ALL SECTION CORNERS AND QUARTER CORNERS CONTROLLING THE SUBDIVISION OF SECTION 32 WERE FOUND. THE NORTH HALF OF THE WEST LINE AND THE NORTH LINE USING THE LOCATIONS AS ESTABLISHED BY THE 1917 SURVEY.

USING THESE CORNERS, THE CENTER QUARTER CORNER LOCATION WAS ESTABLISHED BY INTERSECTION. USING THIS CENTER QUARTER LOCATION AND THEORETICAL LOCATIONS FOR THE SIXTEENTH CORNERS AROUND THE SOUTHEAST QUARTER, THE SOUTHEAST QUARTER WAS SUBDIVIDED BY INTERSECTION AS PER THE BLM MANUAL.

THE SUBDIVISION OF THE NORTHEAST QUARTER DIFFERED IN THAT THERE WAS FOUND A MONUMENT ON THE EAST LINE SET BY BLM FOR THE NORTH SIXTEENTH CORNER SECTIONS 32 AND 33. THE SUBDIVISION OF THE NORTHEAST QUARTER USED THIS FOUND SIXTEENTH CORNER, THE LOCATION OF THE CENTER QUARTER CORNER AS PREVIOUSLY DESCRIBED, THE CENTER-NORTH SIXTEENTH ON THE MID-POINT OF THE WEST LINE OF THE QUARTER, AND THE CENTER-EAST SIXTEENTH ON THE MID-POINT OF THE SOUTH LINE OF THE QUARTER, THE EAST SIXTEENTH FOR SECTION 32 ONLY ON THE NORTH SECTION LINE. USING THESE POINTS THE LOCATION OF THE NORTHEAST SIXTEENTH CORNER OF SECTION 32 WAS ESTABLISHED BY INTERSECTION PER THE BLM MANUAL.

## POSTING:

LINES AS SHOWN ON THE PLAT WERE POSTED WITH ALUMINUM POSTS AND U.S. FOREST SERVICE PROPERTY BOUNDARY SIGNS. THE PROPERTY LINES WERE ALSO MARKED WITH BLAZED TREES. LINES SO MARKED ARE:

NORTH LINE NORTHWEST  $\frac{1}{4}$   
 NORTH, EAST, AND SOUTH LINES, NORTHWEST  $\frac{1}{4}$ , NORTHEAST  $\frac{1}{4}$   
 WEST AND SOUTH LINES, SOUTH HALF, NORTHEAST  $\frac{1}{4}$   
 EAST AND SOUTH LINES OF NORTHEAST  $\frac{1}{4}$ , NORTHEAST  $\frac{1}{4}$ ,  
 SOUTHEAST  $\frac{1}{4}$   
 EAST AND SOUTH LINES OF SOUTHWEST  $\frac{1}{4}$ , NORTHEAST  $\frac{1}{4}$ ,  
 SOUTHEAST  $\frac{1}{4}$   
 EAST AND SOUTH LINES OF NORTH  $\frac{1}{2}$ , SOUTHWEST  $\frac{1}{4}$ ,  
 SOUTHEAST  $\frac{1}{4}$   
 WEST LINE OF SOUTHWEST  $\frac{1}{4}$ , SOUTHWEST  $\frac{1}{4}$ , SOUTHEAST  $\frac{1}{4}$

SAID LINES BEING SUBDIVISIONAL BOUNDARIES OF SECTION 32, TOWNSHIP 39 SOUTH, RANGE 3 WEST, W.M. JACKSON COUNTY, OREGON

NARRATIVE : ORS 209.250

1 SURVEY FOR : ROGUE RIVER NATIONAL FOREST  
P.O. BOX 520  
MEDFORD, OREGON 97501

2 LOCATION : SECTION 32, T39S, R3W, W.M., JACKSON COUNTY, OREGON

4 PURPOSE : TO MARK THE LINES BETWEEN FOREST SERVICE  
AND OTHER OWNERSHIP.

5 PROCEDURES : CLOSED LOOP TRAVERSES WERE RAN AROUND ALL  
CONTROLLING CORNERS AND LINES TO BE POSTED.  
TIES TO CORNERS AND OFFSETS TO TRUE LINE  
WERE COMPUTED AND THE BOUNDARIES WERE MARKED.

6 EQUIPMENT : TOPCON THEODOLITE AND EDM, MODEL GTS-10D

CREW : D. SCOTT, LS1844; B. SUTTON, LS 1848  
G. COOK : R. BAKER

3 BASIS OF BEARING : SOLAR OBSERVATION NEAR SOUTHEAST CORNER S 32

8 BASIS FOR NORTH ONE HALF OF WEST LINE AND NORTH LINE OF S 32

1858 THE WEST AND NORTH BOUNDARIES BY SEWALL TRUAX

1917 MENSCH AND WRIGHT GLO SURVEYORS', INSTRUCTIONS  
GROUP 31; DATED AUGUST 19, 1916, RETRACED THE  
TRUAX LINES AND BEING UNABLE TO LOCATE EITHER  
THE NORTHWEST CORNER OF SECTION #32 OR THE  
ONE-QUARTER CORNER TO SECTIONS 32 and 29  
RESURVEYED THE WEST AND NORTH LINES AND MONUMENTED  
NEW CORNERS AT APPORTIONED LOCATIONS.  
DURING THE COURSE OF THIS RESURVEY THEY SET  
SEPERATE CORNERS FOR SECTION 29.

1982 REMONUMENTATION BY THE JACKSON COUNTY SURVEYOR OF  
THE NORTHWEST CORNER OF SECTION 32 FROM ORIGINAL  
EVIDENCE FROM THE 1858 SURVEY BY S. TRUAX.

THE COUNTY SURVEYOR, MR. MCGINTY, THEN ASKED THE  
BLM OFFICE FOR OREGON FOR AN OPINION ON THE  
AUTHORITY OF THESE CORNERS. THE REPLY FROM  
MR. GLENN IS ON RECORD AT THE COUNTY SURVEYORS  
OFFICE AND STATES THAT AS THE 1917 CORNERS WERE  
SET AND ACCEPTED BY GLO WHILE AFFECTED LANDS  
WERE STILL UNDER ORIGINAL GOVERNMENT OWNERSHIP  
THEY CONTROL THE LINES OF THE SECTION. LAND IN  
THE SOUTHEAST QUARTER HAD BEEN PATENTED BEFORE  
1917 BUT THE NORTH QUARTER CORNER SET IN 1917  
WAS USED AS THE BEST EVIDENCE THE ORIGINAL  
LOCATION. THIS CORNER HAS BEEN IN PLACE AND  
ACCEPTED FOR 65 YEARS.