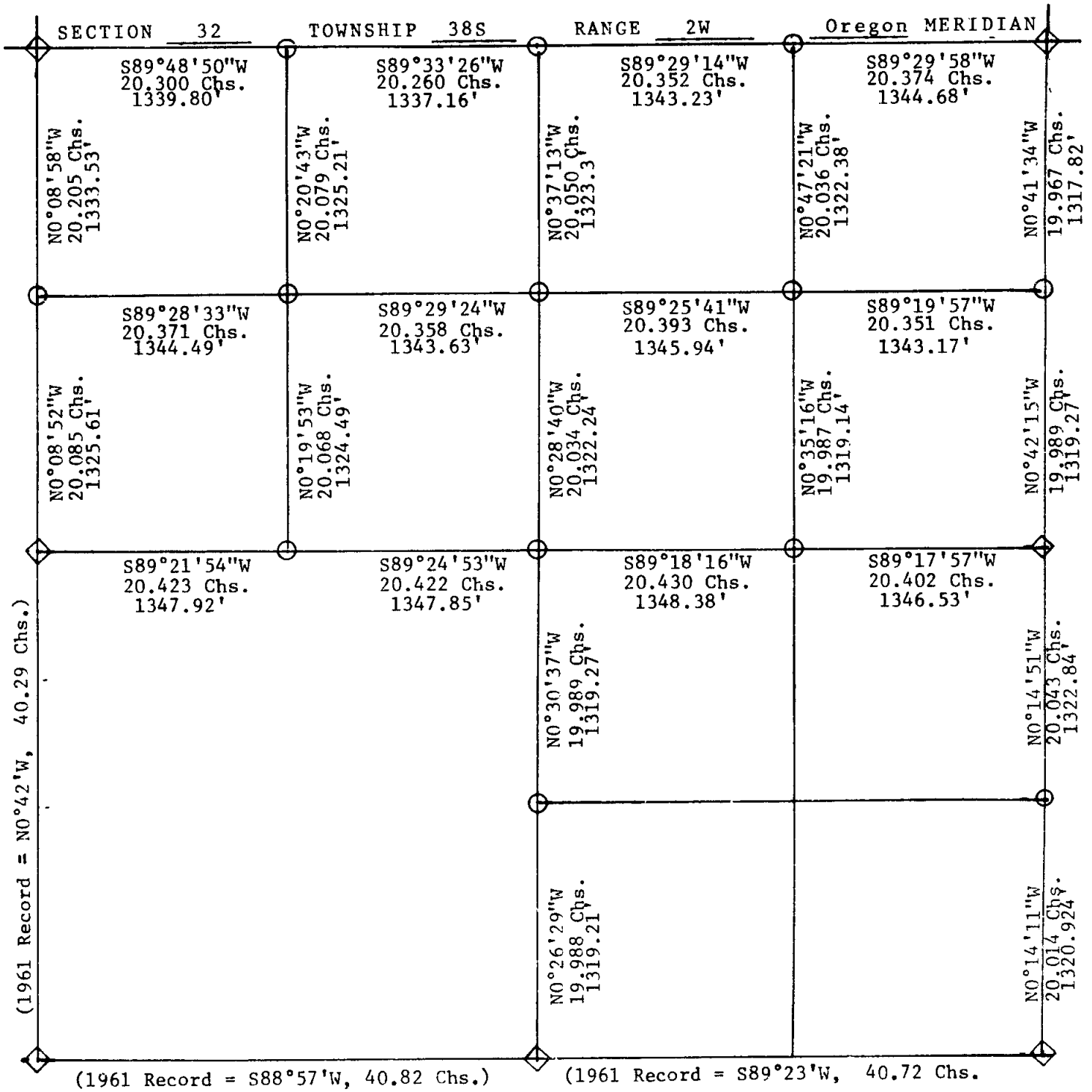
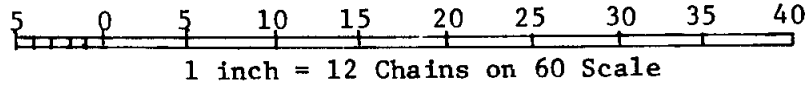


9617

(Redraft of an Unofficial Survey Map)

UNITED STATES  
DEPARTMENT OF THE INTERIOR  
BUREAU OF LAND MANAGEMENT  
SECTION PLAT



- ◇ ORIGINAL CORNERS
- PROPORTIONED CORNERS

\* \* RECEIVED \* \*

Date 5/18/83 By SK

This survey consists of:

3 sheet(s) Map

2 page(s) Narrative

**JACKSON COUNTY  
SURVEYOR**

This is a redraft of copy of survey and map of (unofficial 1981 survey) by B.L.M. with addition of chains converted into feet.  
By: Jackson County Surveyor

REGISTERED  
**PROFESSIONAL  
LAND SURVEYOR**

*Edward A. McGinty*

EDWARD A. MCGINTY  
301

*Edward A. McGinty*  
Edward A. McGinty

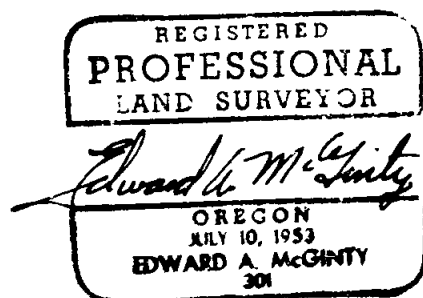
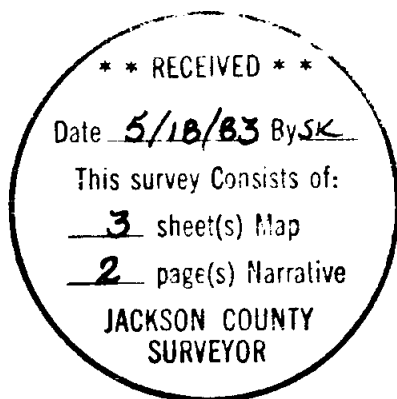


NARRATIVE (Con't)

To verify the re-establishment of lost corners and previous surveys of record, the unofficial survey of a retracement (designated '3' on map) was made. This was performed with EDM equipment and a one second theodolite and as part of document, a redraft of B.L.M. map (note chains converted to feet was added).

From survey data acquired by Jackson County's retracement, a proportion position of the quarter corner common to Sections 29 and 32 bears North 51°43'21" East, 7.14 feet. From the present location, monumented by the B.L.M., the correct position of; the West sixteenth corner bears North 14°30'01" East, 5.57 feet. The East Sixteenth corner bears North 59°46'04" East, 4.10 feet.

This quarter corner, although under question the past 6 years, was approved by the B.L.M. in 1980. The existing confusion is expected to continue until such time as the B.L.M. corrects their 1975 survey. In the event the B.L.M. fails to make the needed corrections in the near future, this quarter corner will be restored by this office in the correct position.



## SURVEY NARRATIVE

PURPOSE OF SURVEY: To obtain and document evidence for public record.

LOCATION: Sec. 29 and 32, T38S R2W WM Jackson County, Oregon.

SURVEY BY: Edward A. McGinty, Jackson County Surveyor  
Jackson County Courthouse  
Medford, Oregon 97501

BASIS OF BEARING: Survey No. 882 line between B.L.M. monuments identified as the West sixteenth corner between Sections 29 and 32 and the quarter corner between Sections 29 and 32.

## NARRATIVE:

To inform surveyors and the public, "that the surveyed executed by the B.L.M. and officially approved on July 24, 1980 has been officially under protest, effective April 3, 1981 by the Jackson County Surveying Department, for some of the following reasons":

(1) That the evidence provided in the official B.L.M. field notes and plat supplemented with the 1973 B.L.M. Manual of Instruction on Rules and Regulations would indicate this may be a gross misrepresentation of the facts. Some of the conflicts involve exception to the rules regarding "retrace-retracement", "a dependent resurvey", "accuracy", "re-establishment of lost quarter corners", and "subdivision of sections and establishment of one sixteenth corners".

(2) The Federal Statutes Act of March 3, 1909 (35 Stat 845) amended June 25, 1910 (36 Stat 843; 43 SC 772).

(3) Total disregard to protection of bona fide rights acquired under the original grants from the government.

(4) An infringement of State rights in jurisdictional matters, wherein the Federal Government has no concern over relocating boundaries between private ownership.

The first informal protest was made near the end of April 1977, approximately 3 years prior to approval of the final B.L.M. plat. I discovered certain discrepancies to exist in the partial retracement of the B.L.M. survey according to their "unofficial" field notes. According to Lynn Roseberry (B.L.M. Cadastral Surveyor), "no dependent resurvey was ever executed by him". Also, it was an approved procedure adopted at the State level to correct specific corners by using computing offsets and then modifying previous topographic "calls" where course of a call didn't cross at right angles.

Applicable references and definitions: B.L.M. 1973 Manual of Instructions; Chapter 3.74 Subdivision of Section, Chapter 3.89 Establishment of sixteenth corners, Chapter 5.23 and 24 Restoration of Lost corners, Chapter 6.4, 6.25, 6.26 and 6.30 A Dependent Resurvey, Chapter 6.7 and 6.8 Retrace or Retracement, Chapter 6.32 Limit of Closure.

9617

RETRACEMENT B.L.M. SURVEY 1975 - 1980

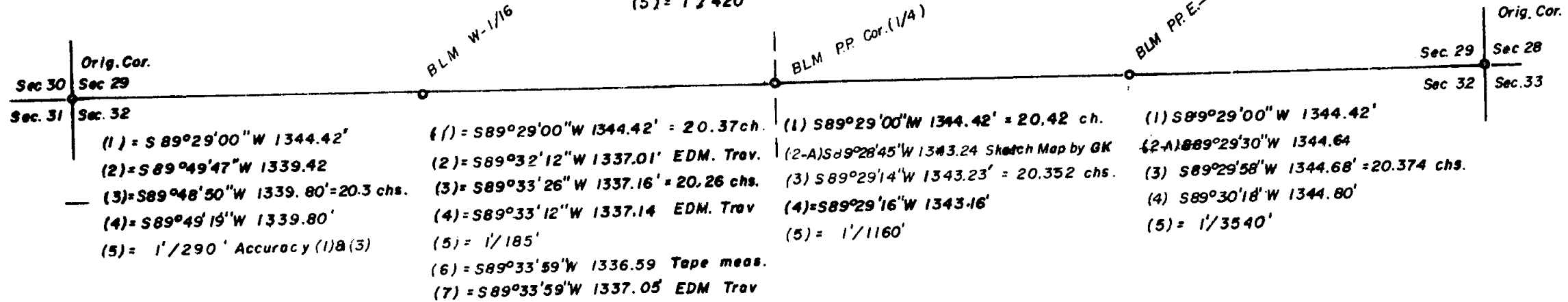
TOWNSHIP 38 SOUTH, RANGE 2 WEST WILLAMETTE MERIDIAN  
JACKSON COUNTY, OREGON

REGISTERED  
PROFESSIONAL  
LAND SURVEYOR

OREGON  
JULY 10, 1953  
EDWARD A. MCGINTY  
301

\*\* RECEIVED \*\*  
Date 5/18/83 By SK  
This survey consists of:  
3 sheet(s) Map  
2 page(s) Narrative  
JACKSON COUNTY  
SURVEYOR

- (1) S89°29'00"W 5377.68' = 81.48 ch.
- (2) = S89°35'10"W 5364.80'
- (3) = S89°35'22"W 5364.86'
- (4) = S89°35'31"W 5364.99'
- (5) = 1'/420'



BY: Edward A. McGinty  
Jackson County Surveyor  
May 18, 1983

Scale: 1" = 500 ft.  
Fd. BLM Monuments

REGISTERED  
PROFESSIONAL  
LAND SURVEYOR  
*Edward A. McGinty*  
EDWARD A. MCGINTY

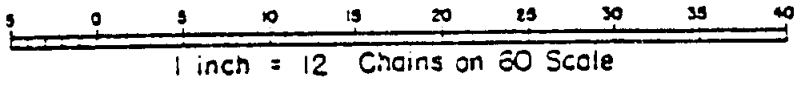
- (1) = BLM. Corrective Sur 1975 Appr July 24, 1980 Filed Co. Sur. Nov. 26, 1980  
Co. Sur. official protest April 3, 1981 to BLM.
- (2) = Sur No 8882 GARY KAISER Filed June 24, 1981
- (3) = BLM Unofficial Sur. retracement 1981
- (4) = Co. Sur. Survey (1975) (1) retrace in 1983
- (5) = Accuracy between Cor. Monu BLM DATA (1) & (5)
- (6) = Sur. No. 6863 Rejection BLM Cor. Mon. May 1977 unofficial protest to BLM
- (7) = Sur. No. 8704 Darrel Edwards. survey Filed Feb. 4, 1981

9617

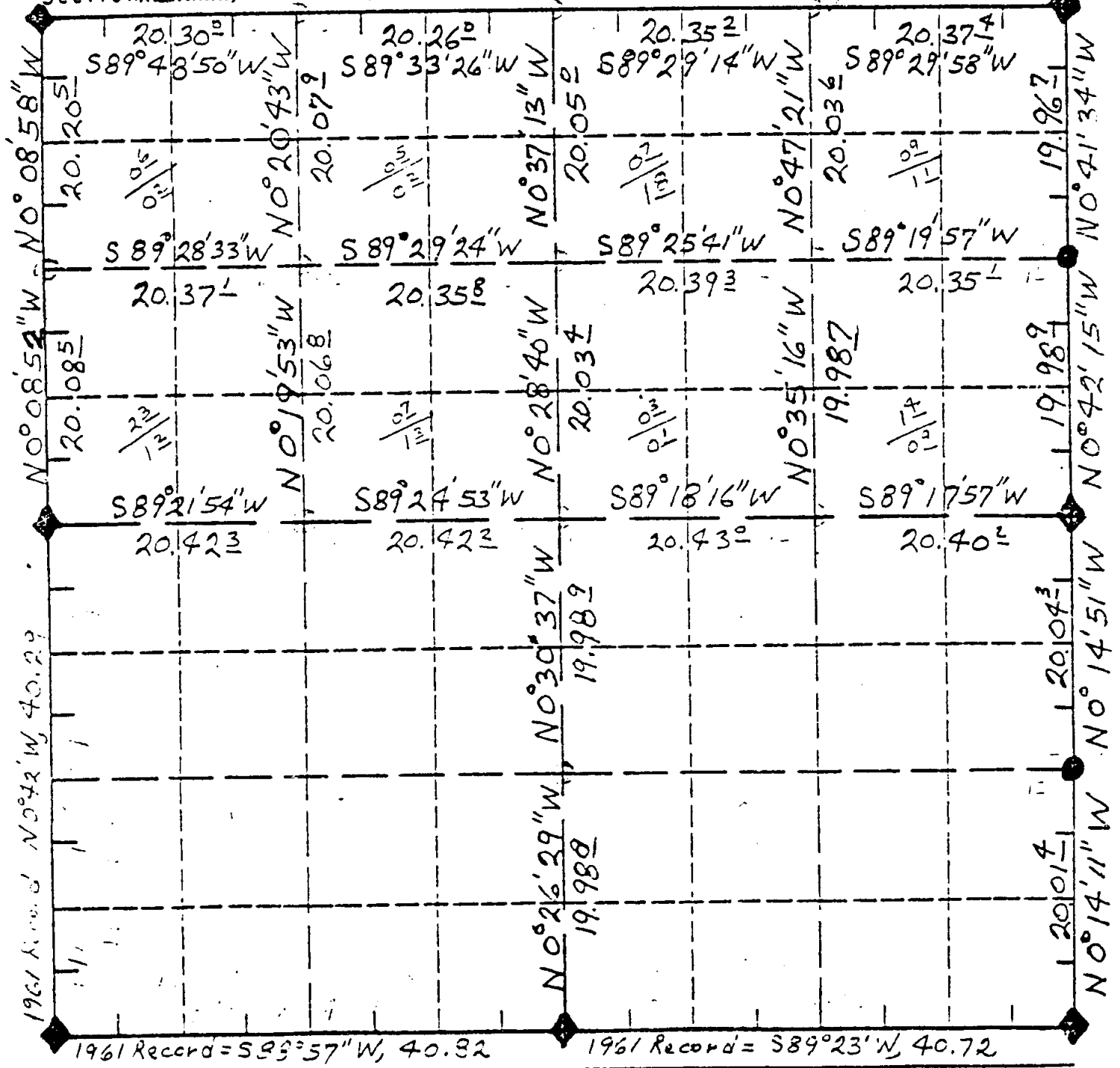
UNITED STATES  
DEPARTMENT OF THE INTERIOR  
BUREAU OF LAND MANAGEMENT

9617

SECTION PLAT



Section 3.2, Township 38.S., Range 2.W., Oregon Meridian



◆ - ORIGINAL CORNER

● - PROPORTIONED CORNER - 1961