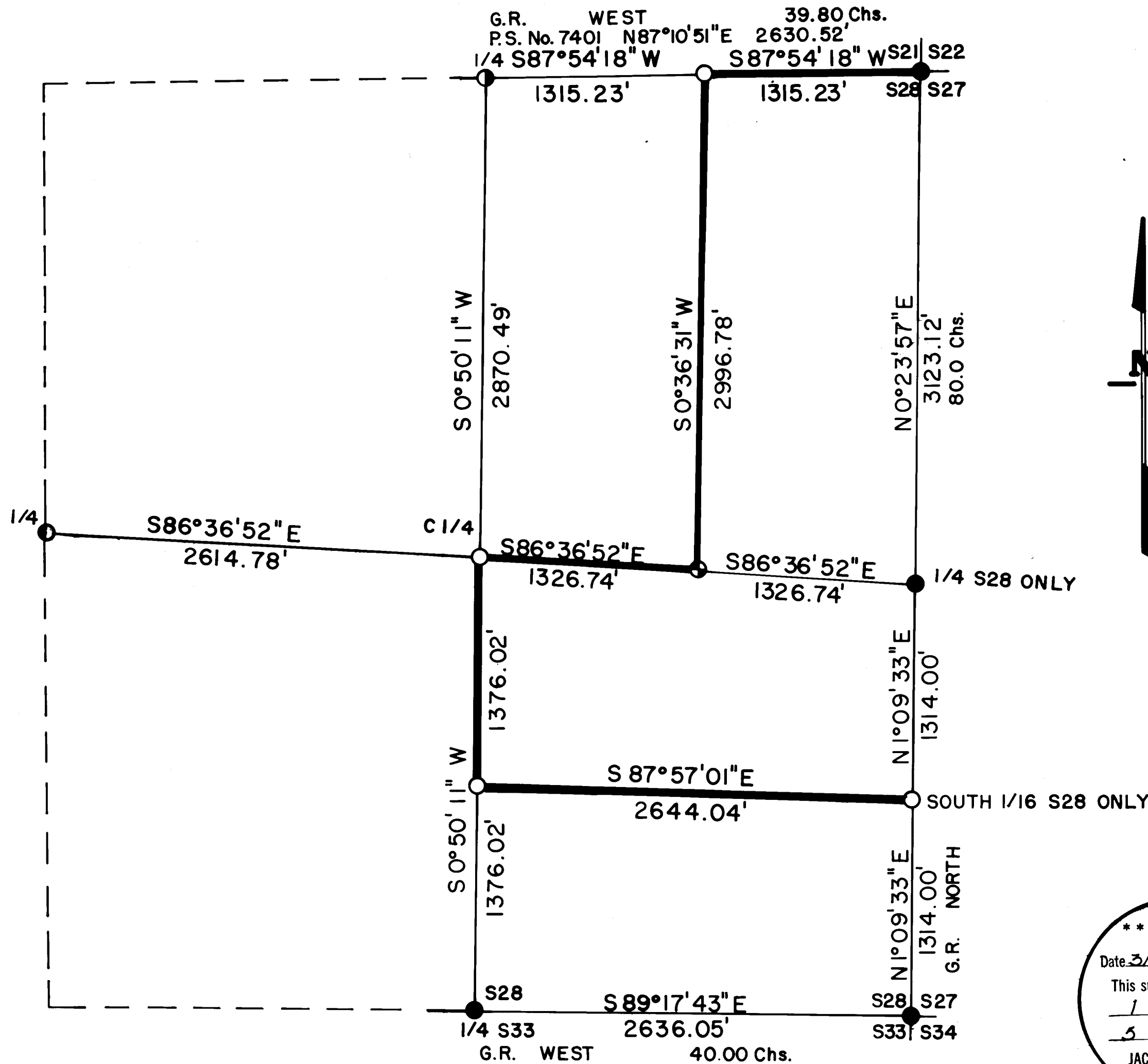


S28 T34S R2E W.M.



CERTIFICATE OF SURVEY

I, ARTHUR R. RAMBO, REGISTRATION No. 1086 REGISTERED PROFESSIONAL LAND SURVEYOR STATE OF OREGON, HEREBY CERTIFY THAT THIS MAP CORRECTLY REPRESENTS A SURVEY MADE BY ME OR UNDER MY DIRECTION IN CONFORMANCE WITH THE LAWS OF THE STATE OF OREGON.



*Arthur R. Rambo*



LEGEND

- FOUND STANDARD B.L.M. MONUMENT
- ⊙ FOUND MONUMENT SET SURVEY No. 7401
- SET 5/8" X 30" REBAR WITH 1 1/2" ALUM. CAP
- ⦿ FOUND COUNTY MONUMENT
- ⊕ SET 1 1/2" ALUM. CAP IN 20 BY 24 IN. ROCK
- G.R. 1855 GOVERNMENT SURVEY
- P.S. PRIVATE SURVEY
- LINE POSTED AND BLAZED THIS SURVEY

BASIS OF BEARING

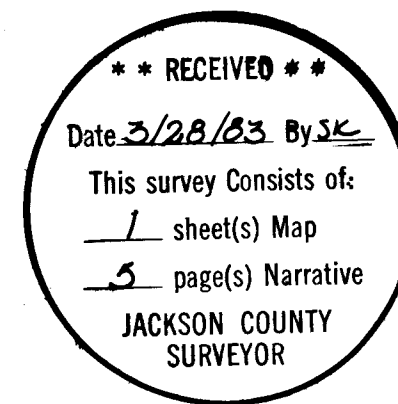
SOLAR OBSERVATION

SCALE

1" = 600'

DATE

MARCH 23, 1983



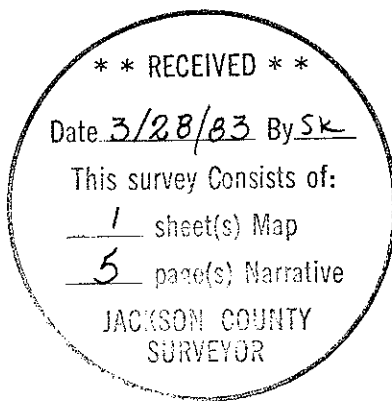
South one-sixteenth corner between Sections 27 and 28 Township 34 South Range 2 East common to Section 28 only. At the corner location which falls on the East edge of Box Creek I set a 5/8 by 30 inch rebar with a 1 1/2 inch dia. aluminum cap marked:

T34S R2E  
S 1/16  
S28 +  
LS 1086

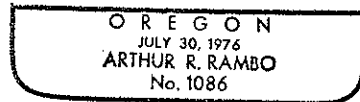
From which:

A 6 1/2 inch Fir bears N28°11'W 37.8 feet marked S 1/16 S28 in upper face B.T. in lower face

A 5 1/2 inch dia. Alder bears S66°20'W 30.5 feet marked S 1/16 S28 in upper face B.T. in lower face



*Arthur R. Rambo*



East one-sixteenth corner common to Sections 21 and 28 Township 34 South Range 2 East. At the corner location I set a 5/8 by 30 inch rebar exposed 8 inches with a 1½ inch dia. aluminum cap marked:

T34S R2E  
S21  
E 1/16 +  
S28  
LS1086

From which:

A 12½ inch dia. Pine bears N14°50'E 29.0 feet marked E 1/16 S21 in upper face B.T. in lower face

A 9 inch dia. Oak bears S72°21'E 17.1 feet marked E 1/16 S28 in upper face B.T. in lower face

Centereast one-sixteenth corner Section 28 Township 34 South Range 2 East. At the corner location I set a 1½ inch dia. aluminum cap in a 20 by 24 inch stone marked:

T34S R2E  
S28  
CE  $\frac{1}{16}$  +  
LS 1086

From which:

A 9 inch dia. Madrona bears S52°09'W 10.8 feet marked CE 1/16 S28 in upper face B.T. in lower face

An 8½ inch dia. Madrona bears S41°48'E 33.3 feet marked CE 1/16 S28 in upper face B.T. in lower face

Center one-quarter corner Section 28 Township 34 South Range 2 East. At the corner location I set a 5/8 by 30 inch rebar with a 1½ inch dia. aluminum cap marked:

T34S R2E  
S28  
C.  $\frac{1}{4}$  +  
LS 1086

From which:

A 9 inch dia. Fir bears S28°47'E 5.5 feet marked C 1/4 S28 in upper face B.T. in lower face

A 9 inch dia. Madrona bears S54°23'W 15.4 feet marked C 1/4 S28 in upper face B.T. in lower face

Center South one-sixteenth corner Section 28 Township 34 South Range 2 East. At the corner location I set a 5/8 by 30 inch rebar with a 1½ inch dia. aluminum cap marked:

T34S R2E  
S28  
CS  $\frac{1}{16}$  +  
LS 1086

From which:

A 7½ inch dia. Fir bears N88°29'W 27.8 feet marked CS 1/16 S28 in upper face B.T. in lower face

An 8 inch dia. Fir bears N19°54'E 16.5 feet marked CS 1/16 S28 in upper face B.T. in lower face

One-quarter corner common to Sections 28 and 33 Township 34 South Range 2 East. At the corner location I found a standard Bureau of Land Management monument marked:

T34S R2E  
S28  
1/4 \_\_\_\_\_  
S33  
1968

From which:

A 16 inch dia. Fir bears  $N11^{\circ}18'E$  29.3 feet with unopened face

An 8 inch dia. Cedar bears  $S32^{\circ}18'W$  5.7 feet with scribes visible in partially healed face

Section corner common to Sections 27, 28, 33 and 34 Township 34 South Range 2 East. At the corner location I found a standard Bureau of Land Management monument marked:

T34S R2E  
S28 | S27  
S33 | S34  
1968

From which:

A  $34\frac{1}{2}$  inch dia. Pine bears  $N15^{\circ}02'E$  16.2 feet with scribe visible in chopped out face

An  $8\frac{1}{2}$  inch dia. Fir bears  $N23^{\circ}21'W$  46.7 feet with opened face

A  $15\frac{1}{2}$  inch dia. Fir bears  $S25^{\circ}06'W$  67.3 feet with unopened face

A 37 inch dia. Fir bears  $S19^{\circ}18'E$  13.1 feet unopened

One-quarter corner between Sections 27 and 28 Township 34 South Range 2 East common to Section 28 only. At the corner location I found a standard Bureau of Land Management monument marked:

T34S |  
R2E |  
1/4 S28 |  
1968

From which:

A  $25\frac{1}{2}$  inch dia. Fir bears  $S72^{\circ}07'W$  11.8 feet unopened

A  $15\frac{1}{2}$  inch dia. Oak bears  $S81^{\circ}48'W$  26.5 feet unopened

An  $8\frac{1}{2}$  inch dia. Fir bears  $N41^{\circ}09'W$  35.4 feet unopened

A 32 inch dia. Pine stump bears  $N29^{\circ}59'E$  23.7 feet

Corners Set This Survey

All measurements to bearing trees are to the center of trees at the stump. All trees have nailed to the lower face a  $1\frac{1}{4}$  inch dia. brass washer marked

LS  
1086

Section corner common to Sections 21, 22, 27, and 28 Township 34 South Range 2 East. At the corner location I found a standard Bureau of Land Management monument marked:

T34S R2E  
 S21|S22  
 S28|S27  
 1966

From which:

An 11½ inch dia. Cedar bears S39°45'W 25.5 feet marked with scribes visible in partially healed face

One half of a 44 inch dia. rotten Fir stub bears N52°16'W 32.2 feet

An 11½ inch dia. Fir bears N20°28'W 44.1 feet with unopened face

A 26½ inch dia. Cedar bears N15°26'E 40.4 feet marked with scribes visible in a partially healed face

A 16 inch dia. Fir bears N75°26'E 50.7 feet with unopened face

A 6½ inch dia. Cedar bears S48°14'E 7.6 feet with unopened face

One-quarter corner common to Sections 21 and 28 Township 34 South Range 2 East. At the corner location I found a 2½ inch dia. iron pipe exposed 7 inches in a mound of stone with a 2½ inch dia. brass cap marked:

T34S R2E  
 21  
 1/4 S - -  
 28  
 LS1679 1978

From which:

A 6½ inch dia. Pine bears N14°45'W 20.0 feet marked 1/4S 21 in upper face B.T. in lower face

A 10 inch dia. Fir bears S69°37'E 27.7 feet marked 1/4S 28 in upper face B.T. in lower face

One-quarter corner common to Sections 28 and 29 Township 34 South Range 2 East. At the corner location I found a 2½ inch dia. Jackson County monument marked:

T34S R2E  
 29 | 28  
 1/4 |  
 S  
 CS

From which:

An 8 inch dia. Oak bears N38°19'W 28.9 feet with unopened faces

A 14 inch dia. Oak bears S70°35'W 44.8 feet with unopened faces

A 12½ inch dia. Cedar bears S62°05'W 21.5 feet with unopened faces

Survey Narrative To Comply With Paragraph 209.250  
Oregon Revised Statutes

Survey For: Medford Resources Corporation  
P. O. Box 550  
Medford, Oregon 97501

Survey By: Arthur R. Rambo LS 1086  
331 Bluff Street  
Butte Falls, Oregon 97522

Location: Section 28 Township 34 South Range 2 East Willamette  
Meridian Jackson County Oregon

Purpose: To establish the East one-sixteenth corner common to section 21 and 28, the Centereast one-sixteenth corner section 28, the Center one-quarter corner section 28, the Centersouth one-sixteenth corner section 28, and the South one-sixteenth corner between section 27 and 28 common to section 28 only. To mark and post the East half of the East half of the North line, the Northsouth centerline of the Northeast one-quarter, the West half of the East half of the Eastwest centerline, the North half of the South half of the Northsouth centerline, and the Eastwest centerline of the Southeast one-quarter of section 28.

Procedure: I found that this section had been surveyed by Nathaniel Ford under contract No. 58 dated April 18, 1855 establishing the one-quarter and section corners. Eugene B. Henry completed a retracement of the East line under contract No. 774 dated January 30, 1908, thus creating a new one-quarter corner for section 27 making the one-quarter corner common to section 27 and 28 set by Nathaniel Ford common to section 28 only. The Northeast corner had been re-established in 1966 and the Southeast corner, South one-quarter corner, and the East one-quarter corner of section 28 had been re-established in 1968 by the Bureau of Land Management. The North one-quarter corner had been re-established by Kurt Weaver (LS 1679) in 1978. The West one-quarter corner had been re-established by the Jackson County Surveyor in 1980.

I performed a closed traverse beginning at the Northeast section corner then proceeding to the North one-quarter corner, then to the West one-quarter corner, then to the South one-quarter corner, then to the Southeast corner, then to the West one-quarter corner section 28 only, then closed back on the Northeast section corner. From this data I calculated positions of corners to be set and the lines to be marked and posted. I then performed a closed traverse along the interior section lines to be posted, beginning on the North section line and ending on the East section line.

Basis of Bearing: Solar Observation

Corners Found and Accepted  
All measurements to bearing trees are to the center of tree at the stump unless otherwise stated.