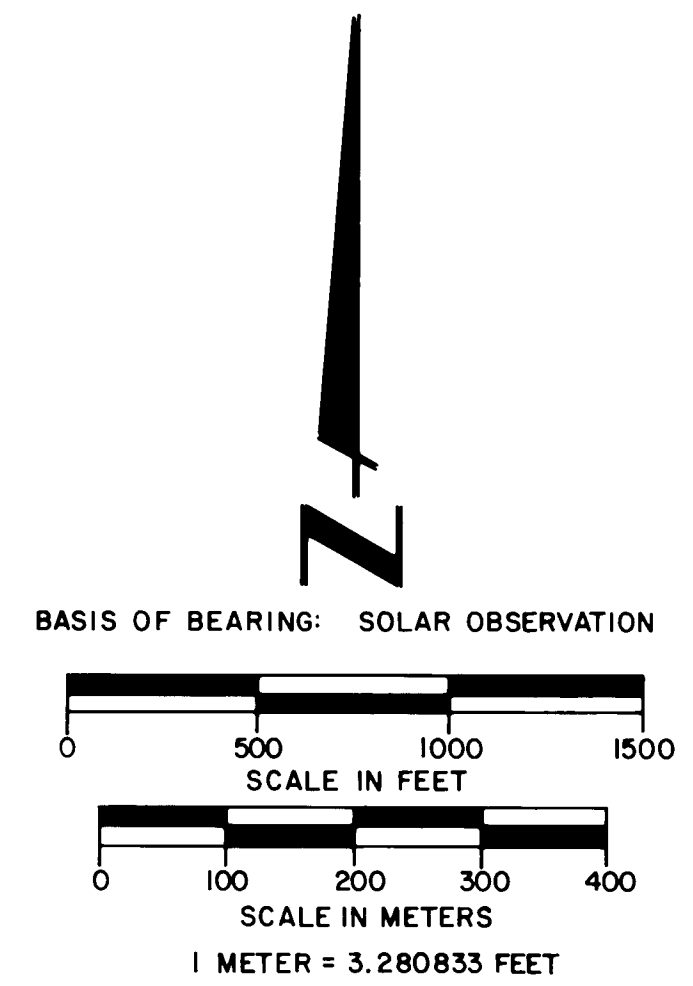
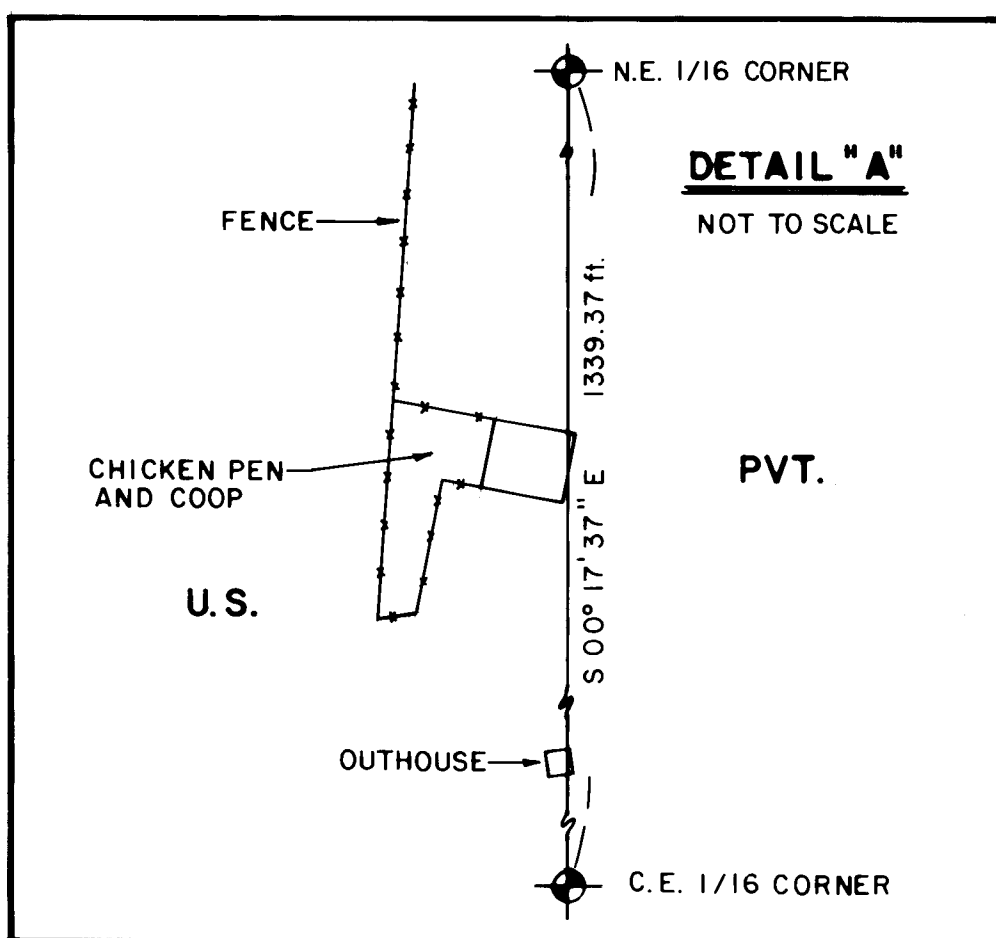
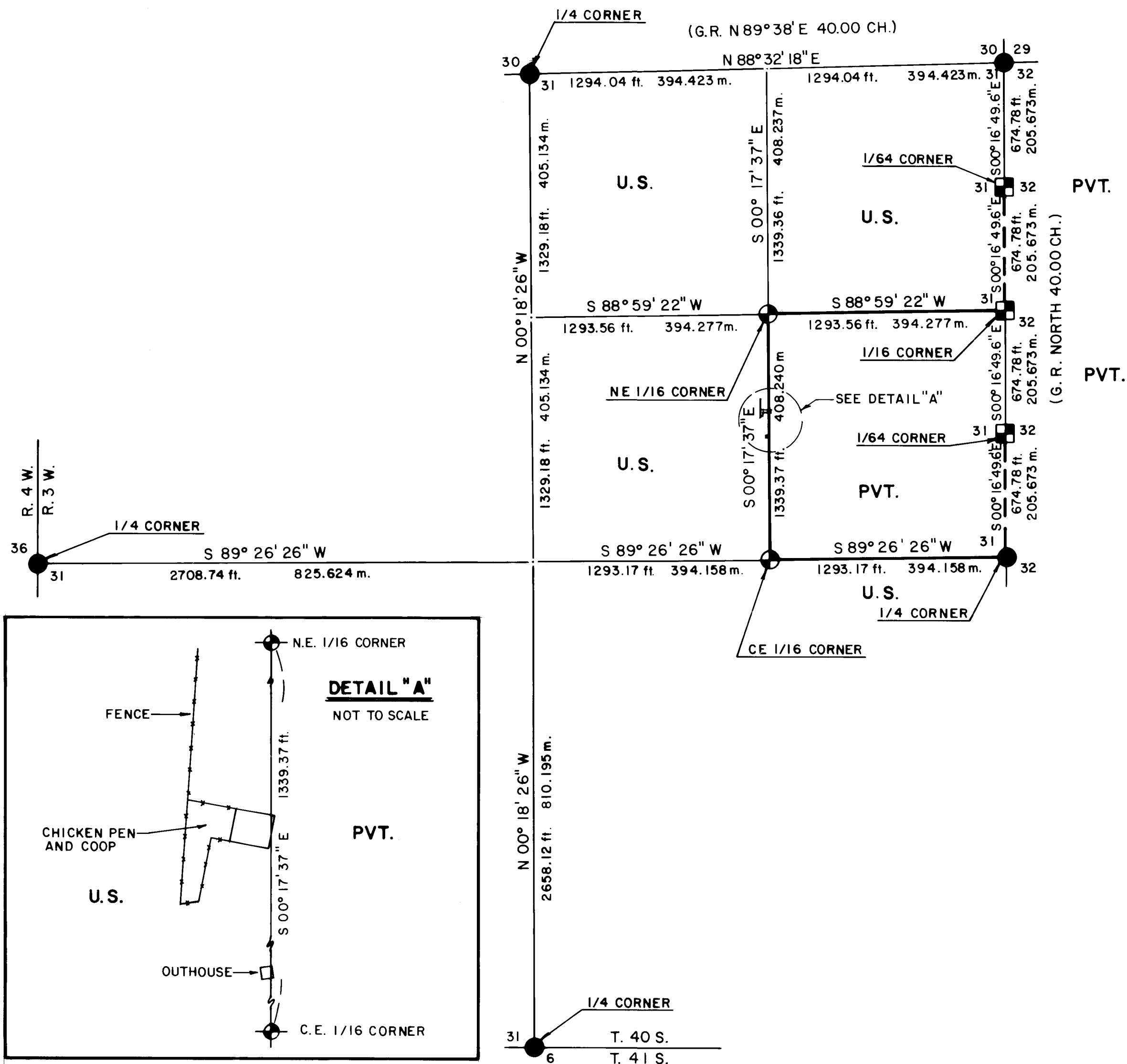


MAP OF SURVEY  
FOR  
ROGUE RIVER NATIONAL FOREST  
P.O. BOX 520  
MEDFORD, OREGON

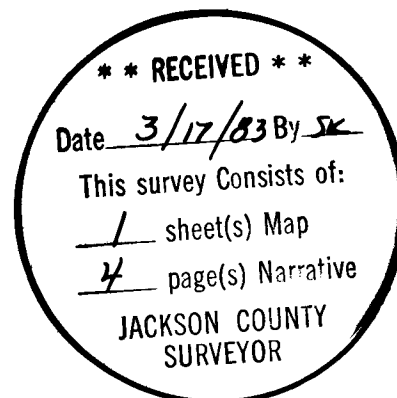
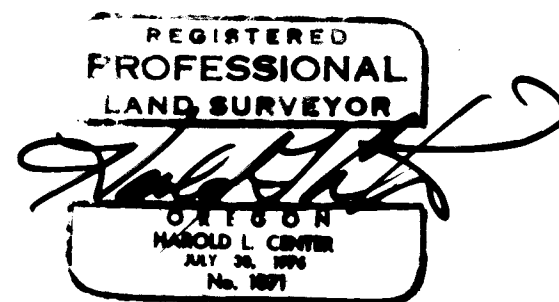


**LEGEND**

- FOUND STANDARD B.L.M. OR COUNTY SURVEYOR BRASS CAP MONUMENT.
- ⊙ SET 2 1/2" x 30" LG. IRON POST WITH 2 1/2" DIA. BRASS CAP.
- ⊠ FOUND BRASS CAP MONUMENT SET REGISTERED LAND SURVEYOR 1071.
- PROPERTY LINE MARKED AND POSTED.
- - - PROPERTY LINE PREVIOUSLY MARKED AND POSTED.
- SECTION LINE CALCULATED FROM TRAVERSE SURVEY.

**CERTIFICATE OF SURVEY**

I, Harold L. Center, Registration No. 1071 Registered Professional Land Surveyor, State of Oregon, hereby certify that this plat correctly represents a survey made by me or under my direction in conformance with the laws of the State of Oregon, at the request of the U.S. Forest Service.



**HISTORY OF SURVEYS**

Original survey of Section 31 was performed by Deputy Surveyor, Samuel W. Lackland under Contract No. 429 dated January 5, 1882.  
Controlling corner points were remonumented by The Bureau of Land Management and the Jackson County Surveyor.  
A dependent resurvey of the South boundary of Section 31 was performed by The Bureau of Land Management, Division of Cadastral Surveys. This survey reestablished the South One Quarter Corner by proportional measurement.  
Controlling one sixteenth corners along the North half of the line common to 31 and 32 were established by Harold L. Center, Registered Professional Land Surveyor No. 1071 (Reference Record Survey No. 9454).  
No other surveys of record were noted.

PROJECT No. 82-18

U.S. DEPARTMENT OF AGRICULTURE  
FOREST SERVICE  
REGION 6 ROGUE RIVER NATIONAL FOREST

DEPENDENT RESURVEY  
AND  
SECTION SUBDIVISION  
SECTION 31, T. 40S., R. 3W., W.M.  
JACKSON COUNTY, OREGON

REVIEWED BY: *David J. McNeill* DATE 2/17/83  
REVIEWED BY: *R.J. Hathaway* DATE 2/18/83

At the corner point I set a 2½-inch diameter galvanized iron post with 2½-inch diameter brass cap marked:

T40S R3W  
E 1/16

C ——— C

S31  
1983  
LS 1071

And the following references:

A 27-inch diameter fir bears S 58° 29' E, 76.30 feet distance. Scribed CE 1/16 S31 LS1071 BT.

A 12-inch diameter fir bears N 87° 39' E, 38.20 feet distance. Scribed CE 1/16 S31 LS1071 BT.

Northeast one-sixteenth corner Section 31, Township 40 South, Range 3 West.

At the corner point I set a 2½-inch diameter galvanized iron post with a 2½-inch diameter brass cap marked:

T40S R3W  
NE 1/16 ——— S31  
1983  
LS 1071

And the following references:

A 6-inch diameter pine bears N 17° 09' W, 3.40 feet distance. Scribed NE 1/16 S31 LS1071 BT.

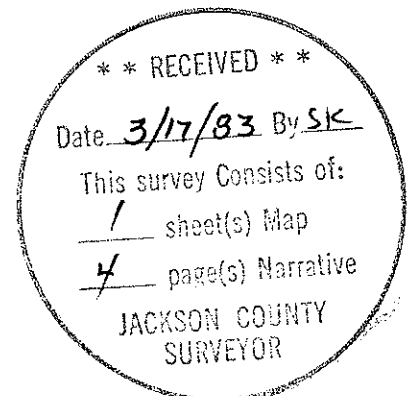
A 9-inch diameter fir bears N 64° 24' E, 32.60 feet distance. Scribed NE 1/16 S31 LS1071 BT.

Note: Although the following corner point was not part of this survey, this corner point was visited and a new reference marked as follows:

Section corner common to Section 31, Township 40 South, Range 3 West; Section 36, Township 40 South, Range 4 West; Section 6, Township 41 South, Range 3 West; Section 1, Township 41 South, Range 4 West.

At the corner point, I found a standard Bureau of Land Management brass cap monument marked:

U.S. Dept of Interior  
Unlawful to Disturb  
T40S  
R4W | R3W  
S36 | S31  
S1 | S6  
T41S  
1964  
Cadastral Surveys  
Bureau of Land Management



and the following new reference:

A 15-inch diameter fir bears N 63° 00' W, 56.6 feet distance, Scribed T40S R4W S36 LS1071 BT

February 7, 1983

HAROLD L. CENTER  
Registered Professional Land Surveyor  
Oregon Certificate No. 1071



And the following references:

A 13-inch diameter pine bears S 19° 57' E, 39.71 feet distance with scribe CS BT visible.

A 5-inch diameter oak bears N 48° 07' E, 30.70 feet distance with scribe CS BT visible.

A 6-inch diameter oak stub bears N 68° 11' E, 20.40 feet distance with scribe marks visible.

Note:

Although the following corner was not required for subdivision of this section, I tied this corner to my control net and marked additional references.

Section corner common to Sections 25 and 36, Township 40 South, Range 4 West, and Sections 30 and 31, Township 40 South, Range 3 West.

At the corner point I found a standard Bureau of Land Management brass cap monument marked:

U.S. Dept. of Interior  
Unlawful to Disturb  
T40S  
R4W R3W  
S25 | S30  
S36 | S31  
1964  
Cadastral Surveys  
Bureau of Land Management

And the following references:

A 5/8-inch diameter iron pin tagged with a 1-inch diameter plastic cap marked "Jackson CS" bears S 68° 11' E, 46.26 feet distance.

The center of a root hole, size and species of tree indeterminate, bears S 16° 23' E, 38.60 feet distance.

A sawed oak stump 7-inches in diameter bears S 03° 14' E, 6.60 feet distance.

A 19-inch diameter fir bears S 01° 32' E, 27.90 feet distance with a healed blaze.

A sawed oak stump 8-inches in diameter bears S 30° 25' W, 21.33 feet distance.

A sawed pine stump 14-inches in diameter bears S 38° 04' W, 30.56 feet distance.

A 5/8-inch diameter iron pin tagged "Jackson C.S." bears N 68° 12' W, 73.98 feet distance.

And new references marked this survey:

An 11-inch diameter pine bears N 70° 15' E, 51.17 feet distance. Scribed T40S R3W S30 LS 1071 BT.

A 7-inch diameter oak bears S 11° 44' W, 58.45 feet distance. Scribed T40S R4W S36 LS1071 BT.

CORNER POINTS ESTABLISHED THIS SURVEY

Center-east one-sixteenth corner Section 31, Township 40 South, Range 3 West.

Corner Points Accepted For Control

NOTE: As stated previously, corner points along the north half of the line separating 31 and 32 were described within Record Survey No. 9454 and will not be redescribed within this narrative.

One-quarter corner common to Section 31, Township 40 South, Range 3 West, and Section 6, Township 41 South, Range 3 West.

At the corner point I found a standard Bureau of Land Management brass cap monument marked:

U. S. Dept. of Interior  
Unlawful to Disturb  
T40S R3W  
 $\frac{1}{4} \frac{S31}{S6}$   
T41S  
Cadastral Survey  
Bureau of Land Management

And the following references:

A 14-inch diameter fir bears S 12° 09' W, 115.74 feet distance with a healed blaze face.

A 9-inch diameter pine bears N 17° 06' W, 209.91 feet distance with scribe visible.

One-quarter section corner to Section 36, Township 40 South, Range 4 West, and Section 31, Township 40 South, Range 3 West.

At the corner point I found a standard Bureau of Land Management brass cap monument marked:

U.S. Dept. of Interior  
Unlawful to Disturb  
1/4  
S36 | S31  
R4W R3W  
T40S  
1964  
Cadastral Surveys  
Bureau of Land Management

And the following references:

A 16-inch diameter fir bears S 38° 35' E, 5.60 feet distance with a healed blaze.

A 17-inch diameter fir bears N 49° 50' W, 16.70 feet distance with a healed blaze.

One-quarter corner common to Sections 30 and 31, Township 40 South, Range 3 West.

At the corner point I found a standard Jackson County Surveyors brass cap monument marked:

Jackson County  
T40S R3W  
 $\frac{1}{4}S \frac{30}{31}$

SURVEY NARRATIVE TO COMPLY WITH  
PARAGRAPH 209.250 OREGON REVISED STATUTES

SURVEY FOR: Rogue River National Forest  
P. O. Box 520  
Medford, OR 97501

LOCATION: Section 31, Township 40 South, Range 3 West,  
Willamette Meridian, Jackson County, Oregon.

BASIS OF BEARING: Solar observation - This survey is based upon solar  
observation utilized for subdivision of  
Section 32.

PURPOSE: To monument property corners and mark and post  
National Forest boundaries within Section 31.

PROCEDURE: Prior to commencement of this survey, I performed  
an investigation of the controlling corners  
necessary for the subdivision of this section.  
Corner points situated along the north half of the  
line to Sections 31 and 32 were established during  
my survey of Section 32, and were held as  
controlling corners for this survey.

The north one-quarter corner had been remonumented from original evidence by the Jackson County Surveyor. The west one-quarter corner had been remonumented from original evidence by the Bureau of Land Management, Division of Cadastral Surveys. The south one-quarter corner had been reestablished by the Bureau of Land Management, Division of Cadastral Surveys, by proportional measurement in 1972 and corrected in position in 1982 due to the recovery of an original corner point which affected the position of this corner. A diligent search was made for the original one-quarter corner. The proportional corner position is situated in the bottom of a small creek and the entire area surrounding the corner has been machine cleared of all vegetation and no evidence of the south one-quarter corner could be located.

With the required corner control located and verified, I performed a closed traverse tying said controlling monuments to my closed traverse. From this data I proceeded to compute the subdivision of this section. I then returned to the field to perform a closed traverse around the boundary of the southeast one-quarter of the southeast quarter of the section. Corner points were monumented and property boundaries were posted utilizing metal posts with National Forest boundary signs attached.

Trees along the boundary lines were blazed and painted with red timber marking paint.

EQUIPMENT UTILIZED IN SURVEY:

This survey was performed utilizing a Wild T-2 Theodolite and a Wild DI-4 Electronic Distance Meter. Certain distances were measured with a Hewlett-Packard 3808-A Electronic Distance Meter.