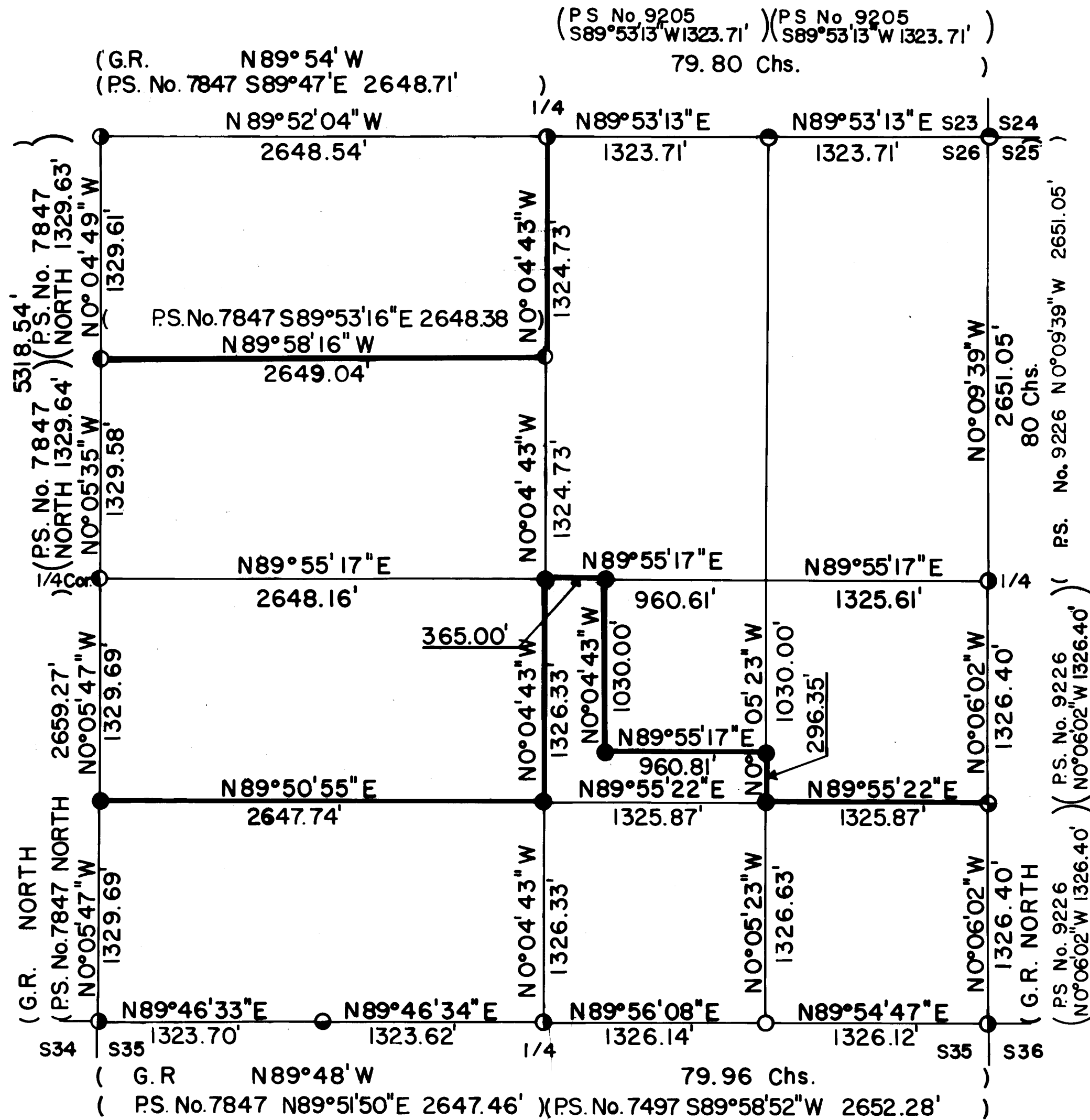


S26 T34S R1E W.M.



CERTIFICATE OF SURVEY

I, ARTHUR R. RAMBO, REGISTRATION No. 1086 REGISTERED PROFESSIONAL LAND SURVEYOR STATE OF OREGON, HEREBY CERTIFY THAT THIS MAP CORRECTLY REPRESENTS A SURVEY MADE BY ME OR UNDER MY DIRECTION IN CONFORMANCE WITH THE LAWS OF THE STATE OF OREGON.

REGISTERED
PROFESSIONAL
LAND SURVEYOR
Arthur R. Rambo
ARTHUR R. RAMBO
No. 1086

LEGEND

- FOUND COUNTY MONUMENT
- FOUND MONUMENT SET SURVEY No. 7847
- FOUND MONUMENT SET SURVEY No. 3455
- FOUND MONUMENT SET SURVEY No. 9205
- FOUND MONUMENT SET SURVEY No. 9226
- FOUND MONUMENT SET SURVEY No. 7497
- SET 5/8" X 30" REBAR WITH 1 1/2" ALUM. CAP
- G.R. 1854 GOVERNMENT SURVEY
- P.S. PRIVATE SURVEY
- LINE POSTED AND BLAZED THIS SURVEY

BASIS OF BEARING

SURVEY No. 9205

SCALE

1" = 600'

DATE

9 MARCH 1983

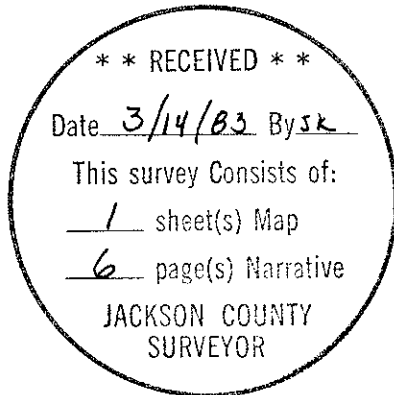
** RECEIVED **
Date 3/14/83 By sk
This survey Consists of:
1 sheet(s) Map
6 page(s) Narrative
JACKSON COUNTY
SURVEYOR

South East corner of Medford Resources Corporation property described in instrument No. 74-16300 official deed records of Jackson County, Oregon. At the corner location I set a 5/8 by 30 inch rebar with a 1½ inch dia. aluminum cap marked:

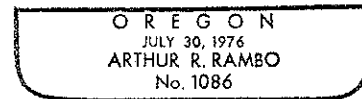
LS 1086
+

From which

A 7½ inch dia. oak bears N2°36'E 37.67 feet marked with upper and lower faces, no scribe
A 13 inch dia. fir bears S19°10'W 18.91 feet marked with upper and lower faces, no scribe



Arthur R. Rambo



From which:

A 6 inch dia. oak bears $N38^{\circ}44'E$ 33.27 feet
marked SE 1/16 S26 B.T.
A 9 inch dia. oak bears $N80^{\circ}30'W$ 39.42 feet
marked SE 1/16 S26 B.T.

Center one-quarter corner section 26 T34S
R1E. At the corner location I set a 5/8 by
30 inch rebar with a 1½ inch aluminum cap
13 inches above ground in a mound of stone
marked:

T34S R1E
S26
C+1/4
LS 1086

From which:

An 8½ inch dia. oak bears $N27^{\circ}19'W$ 13.46 feet
marked C 1/4 S26 upper face B.T. lower face
A 6½ inch dia. oak bears $S55^{\circ}38'E$ 17.95 feet
marked C 1/4 S26 upper face B.T. lower face

Center South one-sixteenth corner section 26
T34S R1E. At the corner location I set a 5/8
by 30 inch rebar with a 1½ inch dia. aluminum
cap marked:

T34S R1E
S26
CS+1/16
LS 1086

From which:

A 9½ inch dia. oak bears $S7^{\circ}22'E$ 81.53 feet
marked CS 1/16 S26 upper face B.T. lower face
A 6 inch dia. oak bears $N85^{\circ}47'E$ 58.00 feet
marked CS 1/16 S26 upper face B.T. lower face

North West corner of Medford Resources Corporation
property described in instrument No. 74-16300
official deed records of Jackson County, Oregon.
At the corner location I set a 5/8 by 30 inch re-
bar with a 1½ inch dia. aluminum cap marked:

LS 1086
+

From which:

A 9½ inch dia. oak bears $N31^{\circ}05'E$ 9.69 feet marked
with an upper and lower face, no scribe
An 8½ inch dia. pine bears $S83^{\circ}49'E$ 41.13 feet
marked with an upper and lower face, no scribe

South West corner of Medford Resources Corporation
property described in instrument No. 74-16300
official deed records of Jackson County, Oregon.
At the corner location I set a 5/8 by 30 inch re-
bar with a 1½ inch dia. aluminum cap in a mound of
stone marked:

LS 1086
+

From which:

An 11½ inch dia. oak bears $N68^{\circ}32'W$ 7.33 feet
marked with upper and lower faces, no scribe
An 11 inch dia. pine bears $N24^{\circ}23'E$ 154.65 feet
marked with upper and lower faces, no scribe.

A 12 inch dia. oak bears S68°53'W 151.4 feet marked S26 upper face B.T. lower face with a 1¼ inch dia. brass washer in lower face marked LS-1086
 An 11½ inch. dia. pine bears N27°52'W 58.8 feet marked S23 in upper face B.T. in lower face with a 1¼ inch dia. brass washer in lower face marked LS 1086
 A 21 inch dia. oak bears N16°30'E 86.9 feet marked S24 in upper face B.T. in lower face with a 1¼ inch dia. brass washer in lower face marked LS 1086

Center North one sixteenth corner section 26 T34S R1E. At the corner location I found a 2½ inch dia. brass cap in a mound of stone marked:

T34S R1E
 CN 1/16
 S26
 LS 1679
 1979

From which:

An 8 inch dia. oak bears N43°34'W 27.02 feet marked CN 1/16 S26 upper face B.T. lower face with a washer marked LS 1679 in both faces
 A 12½ inch dia. oak bears N70°34'E 18.44 feet marked CN 1/16 S26 upper face BT lower face with a washer marked LS 1679 in both faces

South one sixteenth corner common to sections 25 and 26 T34S R1E. At the corner location I found a 5/8 inch dia. rebar with a 1½ inch dia. aluminum cap marked:

LS 1086
 S 1/16
 S26 S25
 T34S R1E

From which:

A 17 inch dia. pine bears N68°29'E 120.2 feet marked S 1/16 S25 upper face B.T. lower face with a 1¼ inch brass washer marked LS 1086 in lower face
 A 9 inch dia. oak bears N79°09'W 23.8 feet marked S 1/16 S26 upper face B.T. lower face with a 1¼ inch dia. brass washer marked LS 1086 in lower face

Corners set this survey

Measurements to trees are to the center of tree at lower face unless otherwise stated. A 1¼ inch dia. brass washer marked LS 1086 is nailed to the lower face of bearing trees

South one sixteenth corner common to sections 27 and 26 T34S R1E. At the corner location I set a 5/8 inch by 30 inch rebar with 1½ inch aluminum cap marked:

T34S R1E
 S27 S27
 S 1/26
 LS 1086

From which:

A 13 inch dia. oak bears S82°03'E 71.23 feet marked S26 B.T.
 A 12 inch dia. oak bears S59°08'W 23.37 feet marked S27 B.T.
 A 5/8 inch rebar bears S2°21'02"E 29.82 feet
 Southeast one sixteenth corner section 26 T34S R1E. At the corner location I set a 5/8 by 30 inch rebar with 1½ inch aluminum cap marked:

T34S R1E
 S26
 SE +1/16
 LS 1086

West one sixteenth corner common to sections 26 and 35 T34S R1E. At the corner location I found a 3/4 inch dia. rebar in a mound of stone

From which:

A 1 inch dia. iron pipe bears N64°W17 inches
A 15 inch dia. oak bears N5°41'30"E 33.88 feet marked one face only, healed no scribe visible
A 22 inch dia. pine bears S61°43'54"E 35.15 feet partly healed face, some scribe visible

One quarter corner common to sections 26 and 35 T34S R1E, at the corner location I found a 2 inch dia. iron pipe with nail in center

From which:

A 19 inch dia. oak bears S72°04'12"W 118.87 feet marked healed upper face only, no scribes visible
An 18 inch dia. oak bears N0°55'42"W 53.33 feet marked CS upper face, B.T. lower face

East one sixteenth corner common to sections 26 and 35 T34S R1E. At the corner location I found at ground level a 5/8 inch rebar

Section corner common to sections 25, 26, 35 and 36 T34S R1E. At the corner location I found a 5x10x12 inch stone marked with an X. Under the stone I found a 2 inch dia. iron pipe with a 1 inch dia. yellow plastic cap inside marked:

Jackson
County

From which:

An 11½ inch dia. oak bears N46°10'W 84.40 feet marked, healed faces no scribe visible
A 13½ inch dia. oak bears N40°18'E 164.90 feet marked, healed faces no scribe visible

One quarter corner common to sections 26 and 25 T34S R1E. At the corner location I found a 2½ inch dia. bronze disc in a mound of stone marked:

Jackson County
T34S R1E
1/4 S
26-25
1977

From which:

A 14 inch dia. cedar bears N34°12'W 122.22 feet marked C.S. upper face B.T. lower face
A 10½ inch dia. cedar bears S88°05'E 73.69 feet marked, C.S. upper face B.T. lower face

Section corner common to sections 23, 24, 25 and 26 T34S R1E. At the corner location I found a 1½ inch dia. aluminum cap buried 6 inches under road marked:

LS 1086
S23 | S24
S26 | S25
T34S R1E

From which:

An 11 inch dia. fir bears S39°27'E 38.8 feet marked S25 upper face B.T. lower face with a 1¼ inch dia. brass washer in lower face marked LS-1086

From which:

A 23 inch dia. oak bears $S20^{\circ}46'E$ 35.42 feet
 marked both faces chopped out, no scribe visible
 A 21 inch dia. fir bears $S12^{\circ}39'E$ 28.68 feet
 marked partially healed faces, some scribe visible
 A 42 inch dia. fir stump bears $N21^{\circ}06'W$ 22.71 feet
 marked scribe visible on small pieces
 A $7\frac{1}{2}$ inch dia. oak bears $N31^{\circ}38\frac{1}{2}''E$ 56.84 feet
 marked partially healed faces, some scribe visible

Section corner common to sections 22, 23, 27 and
 26 T34S R1E. At the corner location I found a
 $2\frac{1}{2}$ inch dia. bronze disc on a 1" iron pipe in
 a mound of stone marked:

Jackson County		1975
T34S	R1E	
S22	S23	
S27	S26	

From which:

A 10 inch dia. pine bears $S30^{\circ}20'W$ 28.39 feet marked
 healed faces, no scribe visible
 A 12 inch dia. pine bears $N73^{\circ}49'W$ 35.04 feet marked
 partially healed faces, some scribe visible
 A 5 inch dia. oak bears $N52^{\circ}29'E$ 49.14 feet marked
 healed faces, no scribe visible
 A 17 inch dia. fir bears $S81^{\circ}28'E$ 10.08 feet marked
 healed faces, no scribe visible

North 1/16 corner between sections 27 and 26 T34S
 R1E. At the corner location I found a $2\frac{1}{2}$ inch dia.
 brass cap on a $2\frac{1}{2}$ inch dia. iron pipe 4 inches
 above ground in a mound of stone marked:

T34S	R1E
N 1/16	
S27	S26
LS1679 1979	

From which:

A 6 inch dia. oak bears $N28^{\circ}56'W$ 20.87 feet marked
 N 1/16 S27 upper face, B.T. lower face
 A 5 inch dia. oak bears $N52^{\circ}20'E$ 28.78 feet marked
 N 1/16 S26 upper face, B.T. lower face

One-quarter corner common to sections 27 and 26 T34S
 R1E. At the corner location I found a $2\frac{1}{2}$ inch dia.
 brass cap on a $2\frac{1}{2}$ inch dia. iron pipe marked:

T34S	R1E
1/4	
S27	S26
LS 1679	
1979	

From which:

A 16 inch dia. pine bears $N11^{\circ}37'W$ 22.10 feet marked
 upper face no scribe, lower face no scribe with $\frac{3}{4}$
 inch dia. brass washers in both faces marked LS-1679
 A 7 inch dia. oak bears $N53^{\circ}34'E$ 24.87 feet marked
 upper face no scribe, lower face no scribe with $\frac{3}{4}$
 inch dia. brass washers in both faces marked LS-1679

Section corner common to sections 26, 27, 34 and 35
 T34S R1E. At the corner location I found a $\frac{1}{2} \times 1\frac{1}{2}$
 inch bar inside a 2 inch dia. iron pipe 6 ins. under
 ground

From which:

A 13 inch dia. oak bears $N71^{\circ}53'30''W$ 475.90 feet
 marked both faces healed
 An 18 inch dia. oak bears $N66^{\circ}35'57''E$ 434.33 feet
 marked unopened

Survey Narrative to Comply With Paragraph 209.250
Oregon Revised Statutes

Survey For: Medford Resources Corporation
P. O. Box 550
Medford, Oregon 97501

Survey By: Arthur R. Rambo LS 1086
331 Bluff Street
Butte Falls, Oregon 97522

Location: Section 26 Township 34 South Range 1 East Willamette
Meridian Jackson County Oregon

Purpose: To set monuments and mark and post boundary lines as
shown on map to accompany this narrative.

Basis of Bearing: Survey No. 9205

Procedure: The original survey of section 26 was completed by Ives
and Hyde under contract #47, dated August 18, 1854. The
Northwest, North 1/4, East 1/4, Southeast, South 1/4 and
Southwest section corners have been re-established by
the Jackson County Surveyor. The West 1/4 corner was re-
established and the Centernorth 1/16 and North 1/16 cor-
ner common to section 26 and 27 were established by Curt
Weaver (LS 1679) on survey No. 7847.
The Northeast corner was re-established and the East 1/16
corner common to section 23 and 26 was established by
Arthur Rambo (LS 1086) on survey No. 9205. The West 1/16
corner common to section 26 and 35 was established by
Charles Hurst (LS 483) on survey No. 3455. The East 1/16
corner common to section 26 and 35 were established by
Richard Bath (LS 1069) on survey No. 7497. The South
1/16 corner common to section 25 and 26 was established
by Arthur Rambo (LS 1086) on survey No. 9226.
I performed a closed traverse survey beginning at the
North 1/4 corner using survey No. 9205 for a basis of
bearing. I proceeded to the Northwest corner, then to
the N 1/16 corner common to section 26 and 27, then to
the West 1/4 corner, then to the Southwest corner, then
to the West 1/16 corner common to section 26 and 35, then
to the South 1/4 corner, then to the East 1/16 corner
common to section 26 and 35, then closing to the Southeast
corner and survey No. 9226. I utilized survey No. 9205 on
the North line and survey No. 9226 on the East line for a
closure, then calculated the positions of interior lines
and corners. Then I performed a closed traverse of in-
terior lines beginning and closing to the exterior lines
of the section. I set corners and posted lines as shown
on plat to accompany this narrative.

Corners Accepted for Control

Measurements to bearing trees are to the center of trees
at stump unless stated otherwise.

One-quarter corner common to sections 26 and 23
T34S R1E. At the corner location I found a 2½ inch
dia. bronze disc on a 1" iron pipe in a mound of
stone marked:

T34S R1E
S23
1/4 — • —
S26 1974
Jackson County