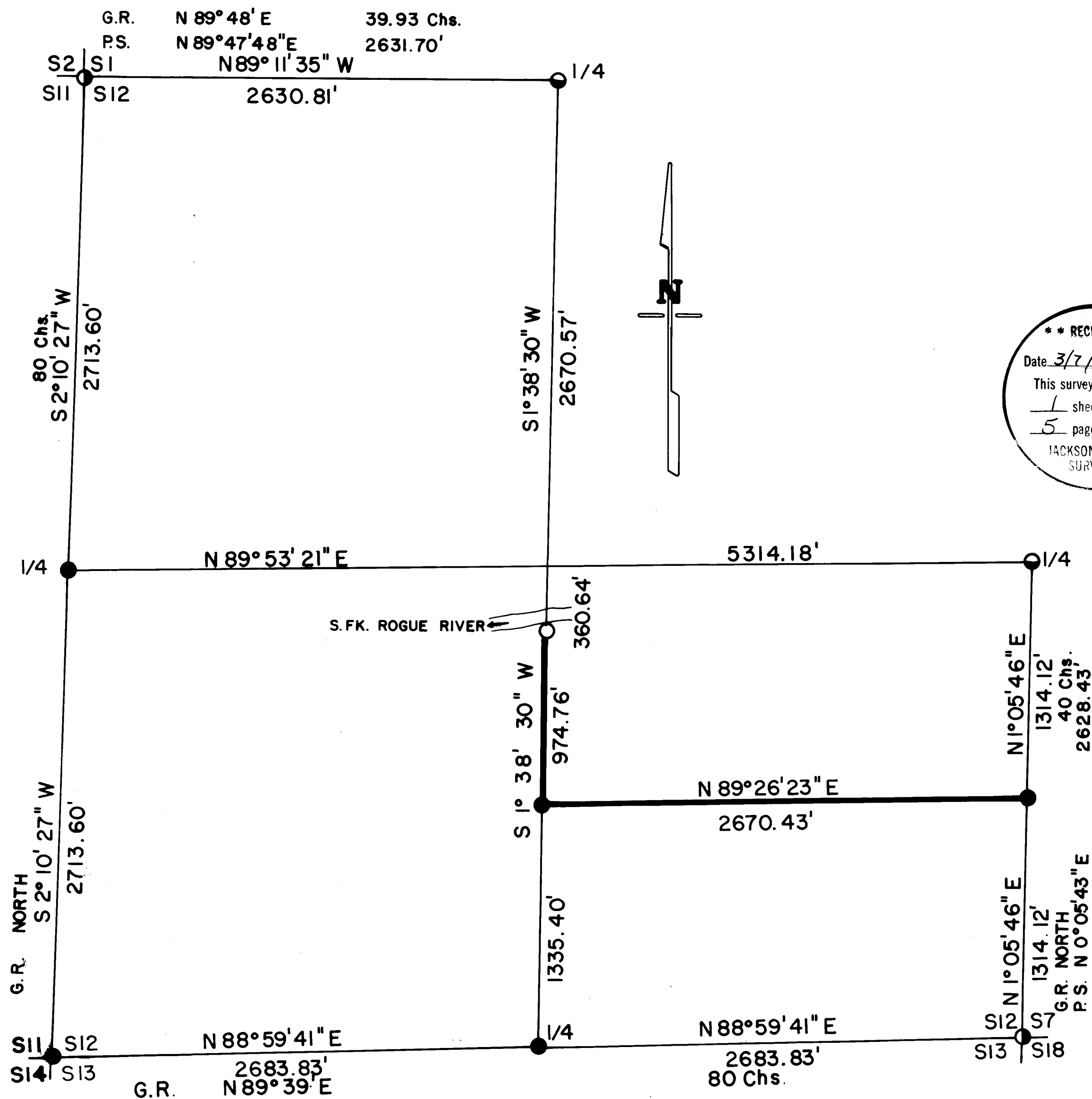


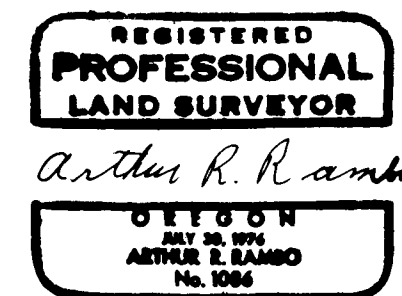
S 12 T 33S R 3E W.M.



** RECEIVED **
 Date 3/7/83 By SK
 This survey consists of:
1 sheet(s) Map
5 page(s) Narrative
 JACKSON COUNTY
 SURVEYOR

CERTIFICATE OF SURVEY

I, ARTHUR R. RAMBO, REGISTRATION No. 1086
 REGISTERED PROFESSIONAL LAND SURVEYOR
 STATE OF OREGON, HEREBY CERTIFY THAT
 THIS MAP CORRECTLY REPRESENTS A SURVEY
 MADE BY ME OR UNDER MY DIRECTION IN
 CONFORMANCE WITH THE LAWS OF THE
 STATE OF OREGON.



LEGEND

- SET 5/8" BY 30" REBAR WITH 1 1/2" ALUM. CAP
- ⊙ FOUND STANDARD BLM MONUMENT
- FOUND MONUMENT SET SURVEY No. 7905
- SET 1 1/2" ALUM. WITNESS CAP IN ROCK
- G.R. 1883 GOVERNMENT RECORD
- P.S. PRIVATE SURVEY
- LINE POSTED AND BLAZED THIS SURVEY

BASIS OF BEARING

SOLAR OBSERVATION

SCALE

1" = 500'

DATE

2 MARCH 1983

Centersouth one-sixteenth corner section 12 Township 33 South Range 3 East Willamette Meridian. At the corner location I set a 5/8 by 30 inch rebar with a 1 1/2 inch dia. aluminum cap marked:

T33S R3E
CS 1/16
S12 +
LS 1086

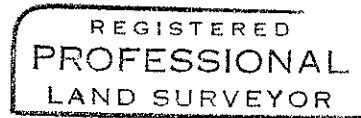
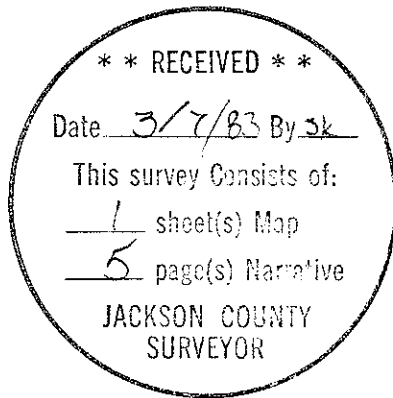
From Which:

A 9 inch dia. Fir bears N56°34'W 10.9 feet marked CS 1/16 S12 in upper face BT in lower face

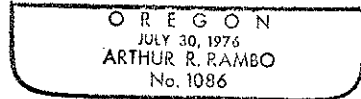
A 15 1/2 inch dia. Fir bears S69°12'E 16.0 feet marked CS 1/16 S12 in upper face BT in lower face

At a point which bears N1°38'30"W 974.76 feet from the centersouth one-sixteenth corner on the North-South centerline of section 12 I set a 1 1/2 inch dia. aluminum cap in the Southwest corner of an 8 foot by 12 foot boulder. Boulder is on the South edge of the South Fork of the Rogue River. Aluminum cap is marked:

LS 1086



Arthur R. Rambo



A 7 inch dia. Fir bears $N75^{\circ}54'E$ 40.3 feet marked
S12 in upper face BT in lower face

An $11\frac{1}{2}$ inch dia. Fir bears $S17^{\circ}12'E$ 7.9 feet marked
S13 in upper face BT in lower face

A $9\frac{1}{2}$ inch dia. Fir bears $S15^{\circ}02'W$ 14.4 feet marked
S14 in upper face BT in lower face

Corners Re-established And Established This Survey

All measurements to bearing trees are to the center
of trees at the stump. All bearing trees have
nailed to the lower face a $\frac{1}{4}$ inch dia. brass
washer marked:

LS
1086

One-quarter corner common to section 11 and 12 Town-
ship 33 South Range 3 East Willamette Meridian. At
the corner location I set a $\frac{5}{8}$ by 30 inch rebar with
a $\frac{1}{2}$ inch dia. aluminum cap marked:

T33S R3E
S11+S12
LS 1086

From which:

A $7\frac{1}{2}$ inch dia. Cedar bears $N87^{\circ}53'E$ 14.8 feet marked
 $\frac{1}{4}$ S 12 in upper face BT in lower face

A 7 inch dia. Fir bears $S73^{\circ}11'W$ 26.2 feet marked
 $\frac{1}{4}$ S11 in upper face BT in lower face

One-quarter corner common to section 12 and 13 Town-
ship 33 South Range 3 East Willamette Meridian. At
the corner location I set a $\frac{5}{8}$ by 30 inch rebar with
a $\frac{1}{2}$ inch dia. aluminum cap marked:

T33S R3E
 $\frac{1}{4}$ S 12
S 13
LS 1086

From which:

A $9\frac{1}{2}$ inch dia. Hemlock bears $N8^{\circ}26'E$ 22.8 feet marked
 $\frac{1}{4}$ S12 in upper face BT in lower face

A $12\frac{1}{2}$ inch Fir bears $S29^{\circ}54'W$ 8.9 feet marked $\frac{1}{4}$ S 13
in upper face BT in lower face

South one-sixteenth corner common to section 12 Town-
ship 33 South Range 3 East and section 7 Township 33
South Range 4 East Willamette Meridian. At the corner
location I set a $\frac{5}{8}$ by 30 inch rebar with a $\frac{1}{2}$ inch
dia. aluminum cap marked:

T33S
R3E | R4E
S | $\frac{1}{16}$
S12 | S7
LS 1086

From which:

An 8 inch dia. Hemlock bears $N73^{\circ}14'W$ 18.5 feet marked
S $\frac{1}{16}$ S12 in upper face BT in lower face

An 11 inch dia. Fir bears $N23^{\circ}51'E$ 22.3 feet marked
S $\frac{1}{16}$ S7 in upper face BT in lower face

From which:

A 6½ inch dia. Hemlock bears S53°28'E 14.7 feet marked scribes visible in partially healed face

An 8 inch dia. Hemlock bears N16°55'E 29.6 feet marked scribes visible in partially healed face

A 1 inch dia. pipe with a 1½ inch dia. bell reducer marked:

T33S R3E
1/4 S1
S12
1967

bears Northerly 1.41 feet

Section corner common to section 1, 2, 11, and 12 Township 33 South Range 3 East Willamette Meridian. At the corner location I found a standard Bureau of Land Management monument exposed 9 inches marked:

T33S R3E
S2 | S1
S11 | S12
1965

From which:

A 15 inch dia. Fir bears N12°30'E 26.1 feet unopened face

A 17½ inch dia. Fir bears N18°38'W 47.3 feet unopened face

A 10 inch dia. Fir bears S26°09'W 25.1 feet unopened face

An 11 inch dia. Fir bears S51°35'E 77.3 feet unopened face

Section corner common to section 11, 12, 13, and 14 Township 33 South Range 3 East Willamette Meridian. At the corner location I found a 1½ inch dia. iron pipe exposed 7 inches

From which:

A 55 inch dia. Fir stump bears N33°14'W 15.7 feet

A 6 inch dia. Yew down and moved from original position marked 33S R3E S13 in upper face BT in lower face

To perpetuate the corner location I took new bearing trees to each tree I nailed a 1¼ inch dia. brass washer marked:

LS
1086

in the lower face and I set, inside the iron pipe, a 5/8 by 30 inch rebar with a 1½ inch dia. aluminum cap marked:

T33S R3E
S11 | S12
S14 | S13
LS 1086

From which:

A 7½ inch dia. Fir bears N36°00'W 2.7 feet marked S11 in upper face BT in lower face

Basis Of Bearing: Solar Observation

Corners Found and Accepted

All measurements to bearing trees are to the center of tree at the stump unless otherwise stated.

Section corner common to Section 12 and 13 Township 33 South Range 3 East and Sections 7 and 18 Township 33 South Range 4 East Willamette Meridian. At the corner location I found a standard Bureau of Land Management monument exposed 5 inches marked:

T33S	
R3E	R4E
S12	S7
S13	S18
1965	

From Which:

A 14 inch dia. Chinquapin bears $S37^{\circ}55'W$ 43.52 feet marked T33S R3E S13 in upper face BT with a 3/4 inch dia. brass washer marked:

LS
1679

in lower face

A 14½ inch dia. Fir stump bears $S5^{\circ}38'W$ 12.2 feet marked T33S R3E S13 BT all in one face

A 12½ inch dia. Hemlock bears $N12^{\circ}06'W$ 6.6 feet marked 33S R3E S12 BT all in one face

A 6 inch dia. Yew bears $N79^{\circ}51'E$ 30.3 feet marked T33S R4E S7 BT all in one face

A 7½ inch Yew bears $S49^{\circ}33'E$ 31.7 feet marked T33S R4E S18 BT all in one face

One-quarter corner common to Section 12 Township 33 South Range 3 East and Section 7 Township 33 South Range 4 East Willamette Meridian. At the corner location I found under a North-South fence a 2½ inch dia. iron post with a 2½ inch dia. brass cap exposed 3 inches marked:

T33S			
1/4			
R3E	S12	S7	R4E
LS 1679			
1979			

From which:

A 6½ inch dia. Fir bears $N48^{\circ}04'W$ 28.3 feet marked with scribes visible in a partially healed face

An 8 inch dia. Fir bears $N68^{\circ}11'E$ 32.1 feet marked with scribes visible in partially healed face

One-quarter corner common to Section 1 and 12 Township 33 South Range 3 East Willamette Meridian. At the corner location I found a 2½ inch dia. iron post with a 2½ inch dia. brass cap exposed 5 inches marked:

T33S R3E	
1/4	
S1	
S12	
LS 1679	
1979	

Survey Narrative To Comply With Paragraph 209.250
Oregon Revised Statutes

Survey For: Medford Resources Corporation
P. O. Box 550
Medford, Oregon 97501

Survey By: Arthur R. Rambo LS 1086
331 Bluff Street
Butte Falls, Oregon 97522

Location: Section 12 Township 33 South Range 3 East
Willamette Meridian

Purpose: To establish the South one-sixteenth corner common to Section 12 Township 33 South Range 3 East and Section 7 Township 33 South Range 4 East, and the Center South one-sixteenth corner of Section 12 Township 33 South Range 3 East. To mark and post the East-West Centerline of the South East quarter of Section 12 and from the Center South one-sixteenth corner of Section 12 North along the North-South center line of Section 12 to the South fork of Rogue River as shown on the map to accompany this narrative.

Procedure: I found that the Southeast and Northwest corners of Section 12 had been re-established by the Bureau of Land Management in 1965. The North and East one-quarter corners of Section 12 had been re-established by proportionate measurement, by Kurt Weaver (LS 1679) in 1979. At the Southwest corner of Section 12 I found a 1½ inch dia. pipe set by E. W. Smith in 1948. At the time E. W. Smith set the pipe he indicated finding the following bearing trees: Northeast Fir down; Northwest Fir OK; Southwest Fir gone; Southeast Yew down. In my search I found the following bearing trees: Northeast Fir gone; Northwest Fir 55 inch dia. stump face in bark no scribe visible K tag on back side of stump (E. W. Smith 1948) bears N 33°14'W 15.7 feet to the center of stump; Southwest Fir gone; Southeast Yew down and moved, 6 inch dia. marked 33S R3E S13 BT in partially healed faces. I accepted this location for the corner even though the bearing and distance do not match exactly to the stump of the tree to the Northwest. I found the Yew tree to the Southeast had obviously been moved from the original position as the top of the tree was sticking in the ground with the roots up in the air. Logging equipment had disturbed this area, with the Fir tree to the Northeast now gone. Both of these trees were found by E. W. Smith in 1948 to give a better measurement for placement of the corner position. The West and South one-quarter corners were searched for but no evidence could be found for either corner.

I performed a closed traverse beginning at the Southeast section corner then proceeding to the East one-quarter corner, then to the North one-quarter corner, then to the Northwest corner, then to the Southwest corner, then back to the Southeast corner. From this data a position for the West and South one-quarter corners was calculated. Another search for these corners was made from this information; still no evidence of either corner could be found. These corners were then re-established by proportionate measurement. The interior corners to be set and the interior lines to be marked were then calculated, and set and marked as shown on the map to accompany this narrative.