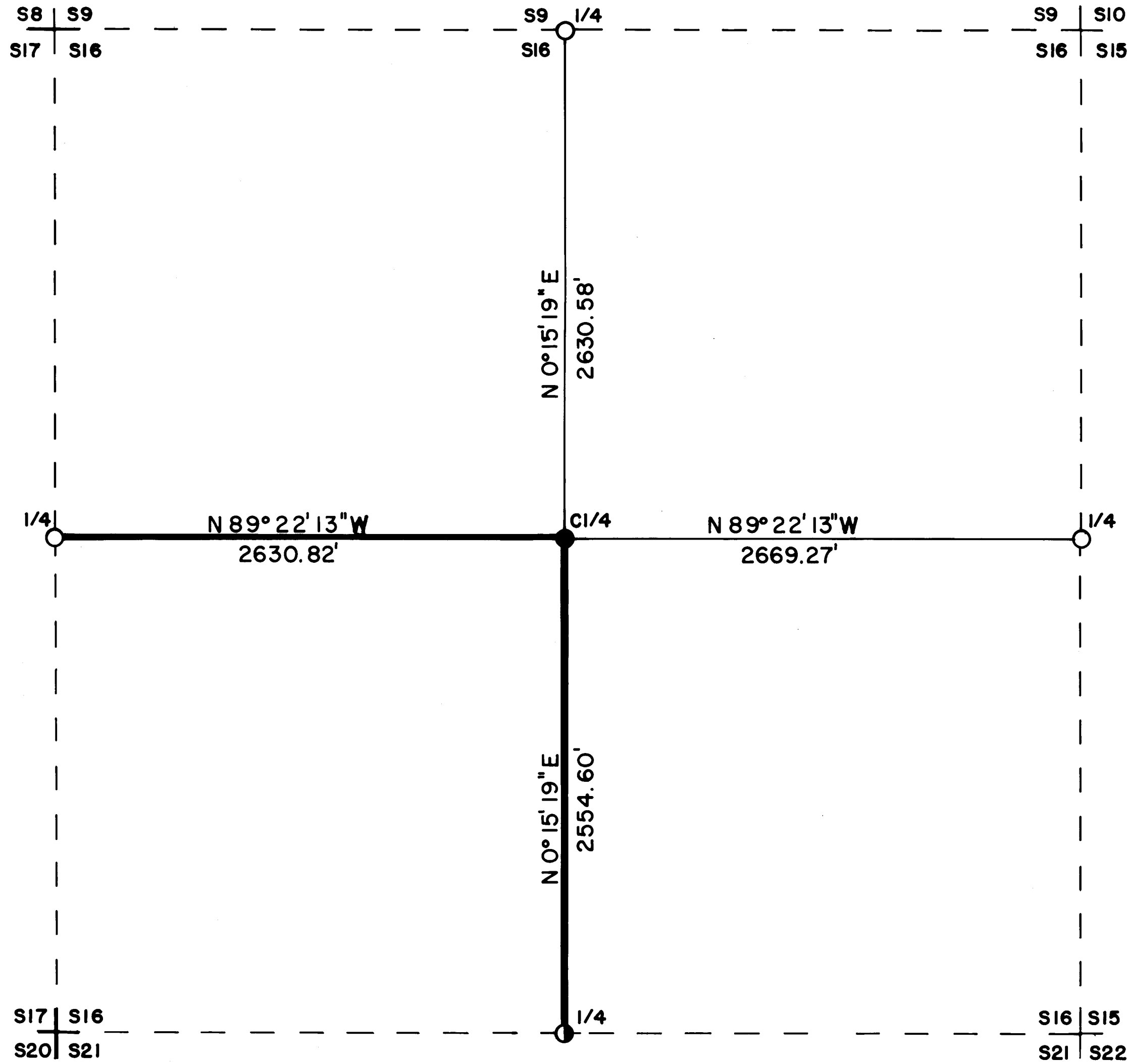


S16 T36S R3E W.M.



CERTIFICATE OF SURVEY

I, ARTHUR R. RAMBO, REGISTRATION No. 1086 REGISTERED PROFESSIONAL LAND SURVEYOR STATE OF OREGON, HEREBY CERTIFY THAT THIS MAP CORRECTLY REPRESENTS A SURVEY MADE BY ME OR UNDER MY DIRECTION IN CONFORMANCE WITH THE LAWS OF THE STATE OF OREGON.

REGISTERED
PROFESSIONAL
LAND SURVEYOR

Arthur R. Rambo

ARTHUR R. RAMBO
REG. NO. 1086
No. 1086

LEGEND

- SET 5/8" BY 30" REBAR WITH 1 1/2" ALUM. CAP
- FOUND STANDARD BLM MONUMENT
- ⦿ FOUND MONUMENT SET SURVEY No. 9078
- LINE POSTED AND BLAZED THIS SURVEY
- CALCULATED LINES

BASIS OF BEARING

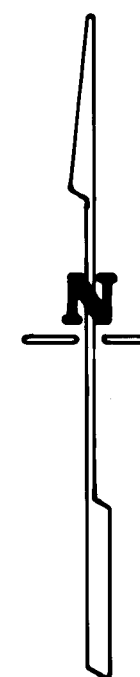
SURVEY No. 9078

SCALE

1" = 500'

DATE

28 FEBRUARY 1983



** RECEIVED **
Date: 3/1/83 By: SK
This survey consists of:
1 sheet(s) Map
3 page(s) Narrative
JACKSON COUNTY
SURVEYOR

Center one-quarter corner Section 16 Township 36
South Range 3 East. At the corner location I set
a 5/8 by 30 inch rebar with a 1 1/2 inch dia. Aluminum
cap marked:

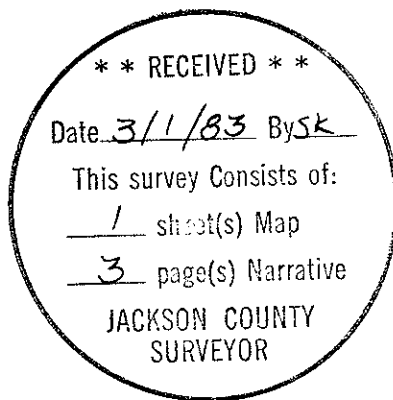
T36S R3E
C1/4 S16
LS1086

I mounded stone around monument

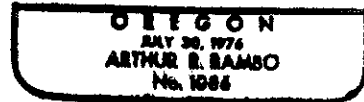
From which:

A 6 1/2 inch dia. Fir bears S79°30'W 22.1 feet marked
C 1/4 S16 upper face BT in lower face

A 9 1/2 inch dia. Yew bears N12°50'W 26.7 feet marked
C 1/4 S16 upper face BT in lower face



Arthur R. Rambo



One-quarter corner common to Section 15 and 16 Township 36 South Range 3 East. At the corner location I found a standard Bureau of Land Management monument, in a mound of stone, marked:

T36S R3E
1/4
S16 S15
1962

From which:

A 13 inch dia. Fir bears $S77^{\circ}18'W$ 11.0 feet face unopened

An 11 inch dia. Pine snag bears $N30^{\circ}06'E$ 17.3 feet scribes visible in partially healed face

I marked a new tree to perpetuate this corner location. A $9\frac{1}{2}$ inch dia. Chinquapin bears $S37^{\circ}34'E$ 30.2 feet marked 1/4 S 15 in upper face. BT in lower face and nailed a $1\frac{1}{4}$ inch dia. Brass washer marked

LS
1086

in lower face

One-quarter corner common to Section 16 and 17 Township 36 South Range 3 East. At the corner location I found a standard Bureau of Land Management monument marked:

T36S R3E
1/4
S17 S16
1966

From which:

A $22\frac{1}{2}$ inch dia. Fir bears $N60^{\circ}22'E$ 37.5 feet marked 16 BT in partially healed face

A 20 inch dia. Fir bears $S77^{\circ}19'E$ 21.1 feet marked BT in chopped out lower face

A $10\frac{1}{2}$ inch dia. Fir bears $S56^{\circ}18'W$ 24.3 feet marked S17 BT in partially healed face

One-quarter corner common to Section 16 and 21 Township 36 South Range 3 East. At the corner location I found a $2\frac{1}{2}$ inch dia. iron post with a $2\frac{1}{2}$ inch dia. brass cap marked:

T36S R3E
1/4 S16
S21
LS1071

From which:

A $13\frac{1}{2}$ inch dia. Fir bears $N16^{\circ}27'W$ 29.3 feet marked 1/4S 16 LS 1071 upper face BT in lower face

A $9\frac{1}{2}$ inch dia. Pine bears $S5^{\circ}33'E$ 9.6 feet marked 1/4S 21 LS 1071 upper BT in lower face

Corner Established This Survey

All measurements to bearing trees are to the center of tree at the stump. I nailed a $1\frac{1}{4}$ inch dia. brass washer marked:

LS
1086

to the lower blaze of all bearing trees

Survey Narrative To Comply With Paragraph 209.250
Oregon Revised Statutes

Survey For: Medford Resources Corporation
P. O. Box 550
Medford, OR 97501

Survey By: Arthur R. Rambo LS 1086
331 Bluff Street
Butte Falls, OR 97522

Location: Section 16 Township 36 South Range 3 East
Willamette Meridian

Purpose: To set the center one-quarter Corner of Section 16,
and to mark and post the South half of the North-
South Center line and the West half of the East-
West Center line of Section 16.

Basis of Bearing: Survey No. 9078

Procedure: I found that the one-quarter corner common to Section 9
and 16, and the one-quarter corner common to 15 and
16 had been re-established in 1962 by the Bureau of
Land Management. The one-quarter corner common to
Section 16 and 17 had been re-established in 1966 by
the Bureau of Land Management. The one-quarter corner
common to Section 16 and 21 had been re-established by
proportionate measurement, Harold Center LS 1071 in
1981.
I performed a closed traverse tying the controlling
one-quarter corners; from this data I calculated the
position for the center one-quarter corner. I then
ran another traverse beginning at the one-quarter
corner common to Section 16 and 21, proceeding North
along the North-South Center line and set the Center
one-quarter corner, then I ran West along the East-
West Center line closing this traverse to the one-
quarter corner common to Section 16 and 17.

Corners Found and Accepted For Control

All measurements to bearing trees are to the center
of the tree at the stump unless otherwise stated.

One-quarter corner common to Section 9 and 16 Township
36 South Range 3 East. At the corner location I found
a standard Bureau of Land Management monument exposed
6 inches, in a mound of stone, marked:

T36S	R3E
1/4	S 9
	S16
	1962

From which

An 18½ inch dia. Fir stump approximately 18 feet high
bears S55°49'W 10.7 feet marked BT in chopped out
lower face

A 19½ inch dia. Fir bears S28°34'W 41.9 feet, face
unopened

A 12 inch dia. Fir bears N61°06'E 8.6 feet, face
unopened