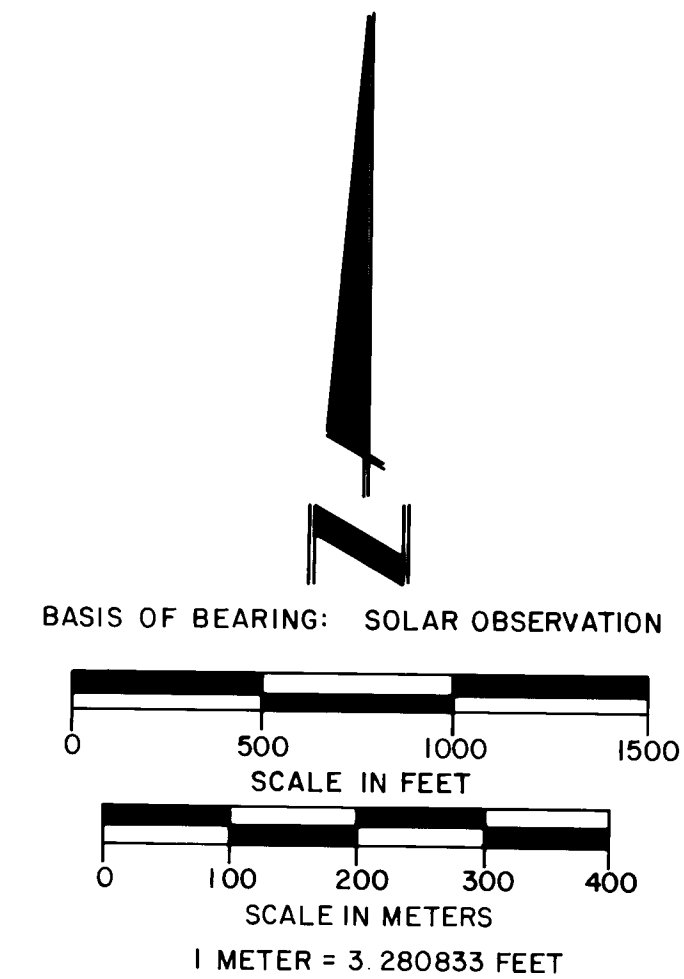
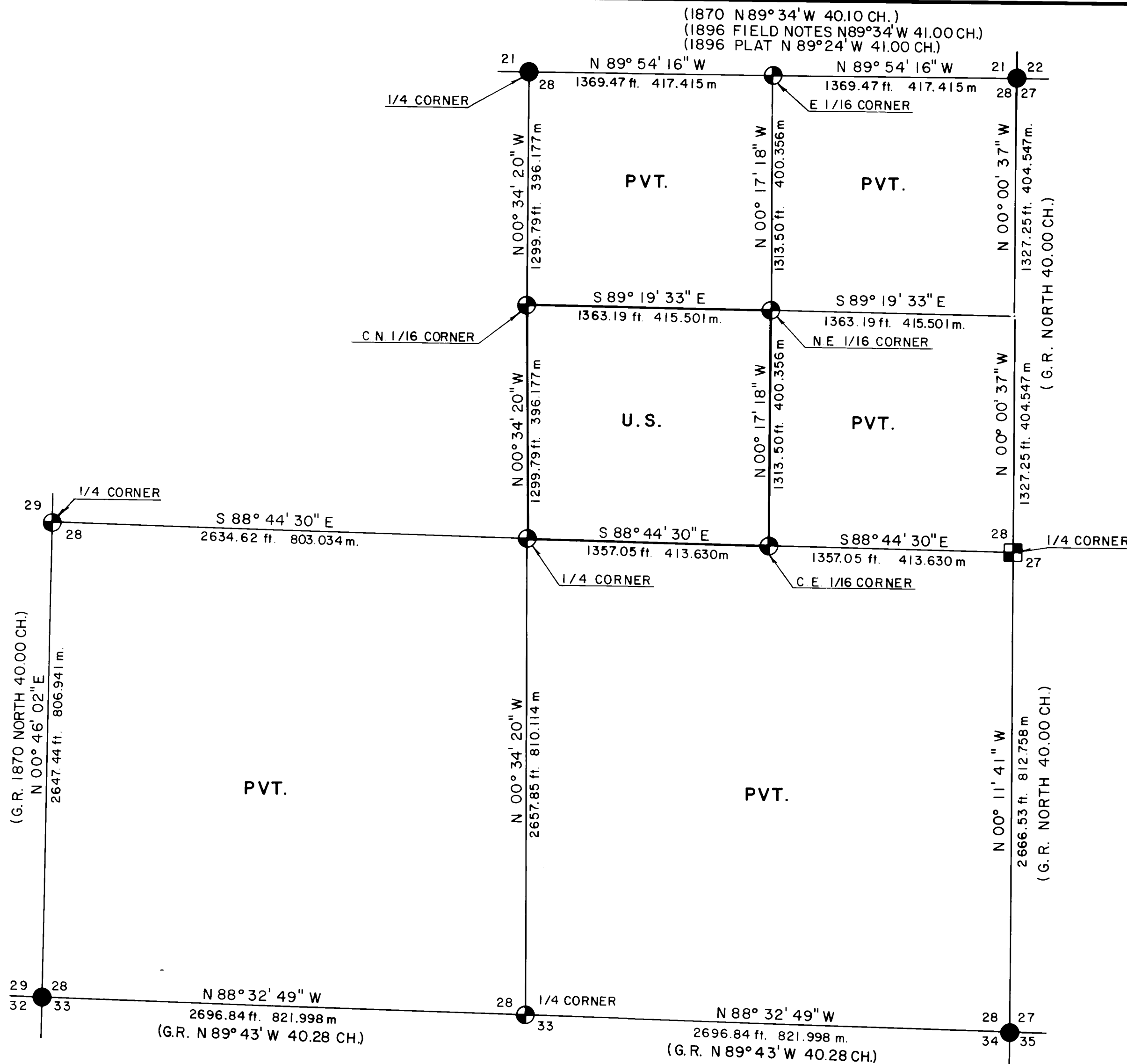


MAP OF SURVEY
FOR
ROGUE RIVER NATIONAL FOREST
P.O. BOX 520
MEDFORD, OREGON
JANUARY 12, 1983



HISTORY OF SURVEYS

The exterior boundaries of this Section were established by Deputy Surveyors William M. Turner and James Howard under Contract No. 142 dated September 9, 1870.

Controlling corners had been remonumented by either the Jackson County Surveyor or Harold L. Center Registered Professional Land Surveyor No. 1071

No other Surveys of Record were noted.

CERTIFICATE OF SURVEY

I, Harold L. Center, Registration No. 1071 Registered Professional Land Surveyor, State of Oregon, hereby certify that this plat correctly represents a survey made by me or under my direction in conformance with the laws of the State of Oregon, at the request of the U.S. Forest Service.

LEGEND

- FOUND STANDARD B.L.M. OR COUNTY SURVEYOR BRASS CAP MONUMENT UNLESS OTHERWISE SPECIFIED..
- ⊕ SET 2 1/2" x 30" LONG IRON POST WITH 2 1/2" DIA. BRASS CAP.
- FOUND BRASS CAP MONUMENT, SET REGISTERED LAND SURVEYOR No. 1071.
- PROPERTY LINE MARKED AND POSTED.
- SECTION LINE CALCULATED FROM TRAVERSE SURVEY.

** RECEIVED **
Date 1/24/83 By SK
This survey consists of:
1 sheet(s) Map
5 page(s) Narrative
JACKSON COUNTY SURVEYOR

REGISTERED PROFESSIONAL LAND SURVEYOR
Harold L. Center
OREGON
HAROLD L. CENTER
JULY 30, 1976
No. 1071

U.S. DEPARTMENT OF AGRICULTURE FOREST SERVICE REGION 6 ROGUE RIVER NATIONAL FOREST	
DEPENDENT RESURVEY AND SECTION SUBDIVISION SECTION 28, T. 32 S., R. 2 E., W.M. JACKSON COUNTY, OREGON	
REVIEWED BY: <u>W. P. Small</u>	DATE <u>1/17/83</u>
REVIEWED BY: <u>P. J. Hathaway</u>	DATE <u>1/17/83</u>

An 11-inch diameter fir bears N 52° 29' E, 87.50 feet distance.
Scribed CE 1/16 S28 LS1071 BT.

East one-sixteenth corner common to Sections 21 and 28, Township 32 South,
Range 2 East.

At the corner point I set a 2½-inch diameter galvanized iron post with a
2½-inch diameter brass cap marked:

T32S R2E
E 1/16 $\frac{S21}{S28}$
1983
LS 1071

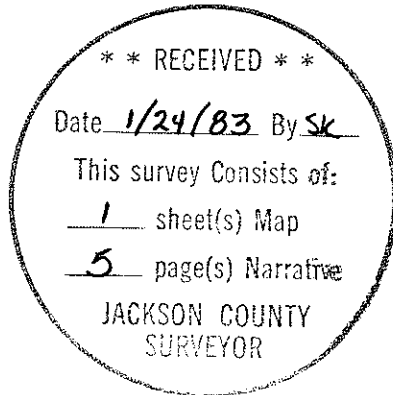
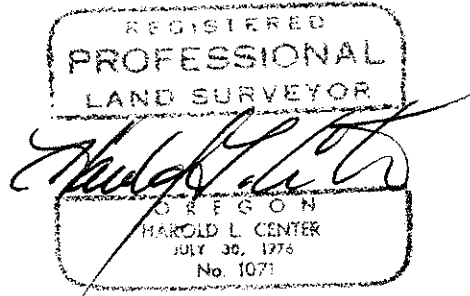
And the following references:

A 9-inch diameter yew bears N 88° 46' E, 95.50 feet distance. Scribed
E 1/16 S21 LS1071 BT.

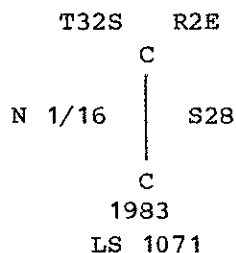
An 11-inch diameter cedar bears S 35° 08' E, 85.10 feet distance.
Scribed E 1/16 S28 LS1071 BT.

January 12, 1983

HAROLD L. CENTER
Registered Professional Land Surveyor
Oregon Certificate No. 1071



At the corner point I set a 2½-inch diameter galvanized iron post with a 2½-inch diameter brass cap marked:



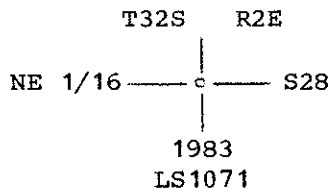
And the following references:

A 6-inch diameter pine bears N 52° 17' E, 18.80 feet distance. Scribed CN 1/16 S28 LS1071 BT.

A 10-inch diameter fir bears S 02° 14' W, 89.90 feet distance. Scribed CN 1/16 S28 LS1071 BT.

Northeast one-sixteenth corner Section 28, Township 32 South, Range 2 East.

At the corner point I set a 2½-inch diameter galvanized iron post with a 2½-inch diameter brass cap marked:



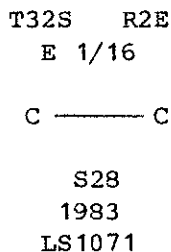
And the following references:

A 7-inch diameter fir bears S 65° 31' E, 8.50 feet distance. Scribed NE 1/16 S28 LS1071 BT.

An 11-inch diameter pine bears N 26° 06' E, 61.30 feet distance. Scribed NE 1/16 S28 LS1071 BT.

Center-East one-sixteenth corner Section 28, Township 32 South, Range 2 East.

At the corner point I set a 2½-inch diameter galvanized iron post with a 2½-inch diameter brass cap marked:



And the following references:

A 13-inch diameter cedar bears N 01° 40' E, 22.50 feet distance. Scribed CE 1/16 S28 LS1071 BT.

And the following references:

A 14-inch diameter fir bears N 35° 58' E, 28.50 feet distance with a healed blaze.

A 31-inch diameter fir bears S 37° 59' E, 11.90 feet distance. Face has been sawed open and no scribe marks were observed.

An 18-inch diameter fir bears S 42° 17' W, 22.20 feet distance. Scribe marks C-S visible.

A 20-inch diameter fir bears N 15° 50' W, 21.20 feet distance. Scribe CS-BT visible.

An 18-inch diameter fir bears N 08° 42' W, 13.00 feet distance. Center of tree very rotten with no scribe marks visible.

CORNERS ESTABLISHED THIS SURVEY

One-quarter corner common to Sections 28 and 33, Township 32 South, Range 2 East.

At the corner point I set a 2 1/2-inch diameter galvanized iron post with a 2 1/2-inch diameter brass cap marked:

T32S R2E

1/4 $\frac{S28}{S33}$

1983
LS 1071

And the following references:

A 20-inch diameter fir bears N 26° 48' E, 10.80 feet distance. Scribed 1/4 S28 LS1071 BT.

A 20-inch diameter fir bears S 31° 54' E, 21.10 feet distance. Scribed 1/4 S33 LS1071 BT.

Center one-quarter corner Section 28, Township 32 South, Range 2 East.

At the corner point I set a 2 1/2-inch diameter galvanized iron post with a 2 1/2-inch diameter brass cap marked:

T32S R2E
|
C 1/4 ———— o ———— S28
|
1983
LS 1071

And the following references:

A 14-inch diameter fir bears N 89° 57' E, 108.30 feet distance. Scribed C 1/4 S28 LS1071-BT.

A 5-inch diameter fir bears N 07° 03' W, 22.20 feet distance. Scribed C 1/4 S28 LS1071-BT.

Center-North one-sixteenth corner Section 28, Township 32 South, Range 2 East.

One-quarter corner common to Sections 21 and 28, Township 32 South, Range 2 East.

At the corner point I found a standard Jackson County Surveyors brass cap monument marked:

T32S R2E
 21
 28
 1981
 1/4 COR

And the following references:

A 36-inch diameter fir stump bears S 72° 31' E, 14.70 feet distance.

A 15-inch diameter cedar bears S 84° 53' W, 53.90 feet distance with a healed blaze.

A 48-inch diameter fir stump bears N 10° 58' W, 23.30 feet distance with a healed blaze on stump. Remains of tree lying to Northeast of stump with 1/4S scribe marks visible.

A 14-inch diameter cedar bears N 01° 18' W, 58.40 feet distance. Scribe CS-BT visible.

One-quarter corner common to Sections 28 and 29, Township 32 South, Range 2 East.

At the corner point I found the remains of the original fir bearing tree. This tree is now a 3.00 foot long fir stub with evidence of axe work and the legible scribe mark 'S' plainly visible. At the corner point as determined by record bearing and distance from the center of the root remains of the recovered bearing tree, I set a 2 1/2-inch diameter galvanized iron post with a 2 1/2-inch diameter brass cap marked:

T32S R2E
 1/4
 |
 •
 |
 1983
 LS1071

And the following references:

A 16-inch diameter cedar bears S 57° 13' W, 25.16 feet distance. Scribed 1/4 S29 LS1071 BT.

A 7-inch diameter fir bears N 03° 40' E, 47.14 feet distance. Scribed 1/4 S28 LS1071 BT.

A fir stub diameter indeterminate, 3.00 feet in length with legible scribe mark S and other illegible scribe marks plainly visible. The center of root hole bears N 75° 00' E, 17.82 feet distance.

Section corner common to Sections 28, 29, 32 and 33, Township 32 South, Range 2 East.

At the corner point I found a 1-inch diameter galvanized iron post with a 1-inch by 1 1/2-inch diameter bell pipe reducer filled with pot metal and marked:

T32S R2E
 | |
 S29 | S28
 | |
 S32 | S33
 | |
 1968

NARRATIVE TO COMPLY WITH
PARAGRAPH 209.250 OREGON REVISED STATUTES

SURVEY FOR: Rogue River National Forest
P. O. Box 520
Medford, OR 97501

LOCATION: Section 28, Township 32 South, Range 2 East,
Willamette Meridian, Jackson County, Oregon.

BASIS OF BEARING: Solar observation - utilized same solar observation
taken for Section 22, same Township and Range.

PURPOSE: To establish property corners and mark and post
National Forest boundaries within Section 28.

PROCEDURE: I began this survey with an investigation of corner
control necessary for the subdivision of Section
28. The North one-quarter corner, Northeast,
Southeast and Southwest section corners had been
remonumented from original corner evidence by the
Jackson County Surveyor. The East one-quarter
corner had been remonumented by myself during my
survey of Section 27 (reference Record Survey No.
9500). A search of the area of the West one-
quarter corner recovered the remains of the origi-
nal bearing tree which is now a 3.00 foot long fir
stub with the remains of an axed face and legible
scribe mark S plainly visible. I reestablish this
corner at record bearing and distance from the
center point of the root remains of this tree. A
preliminary search of the area of the South one-
quarter corner proved unsuccessful in recovering
remains of this corner.

With the above corner control verified and monu-
mented, I performed a closed traverse tying said
monuments. I then computed a search area for the
South one-quarter corner and returned to perform a
diligent search for the missing corner. This
search also proved to be unsuccessful and I
reestablish this corner point by proportional
measurement.

I then performed a closed traverse around the peri-
meter of the Southwest quarter of the Northeast
one-quarter of Section 28, tying this traverse to
my primary traverse. I then established corner
monuments and posted property lines as shown on the
attached map.

Property lines were posted with metal posts with
National Forest boundary signs attached. Trees
along the line were blazed and painted with red
timber marking paint.

This survey was performed utilizing a Wild T-2
Theodolite and a Wild DI4 Electronic Distance
Meter. Certain distances were measured with a
Hewlett-Packard 3808-A Electronic Distance Meter.

CORNERS ACCEPTED FOR CONTROL

The Northeast and Southeast section corners, and the East one-quarter
corner of Section 28 were described within Record Survey No. 9500 and will
not be redescribed within this narrative.