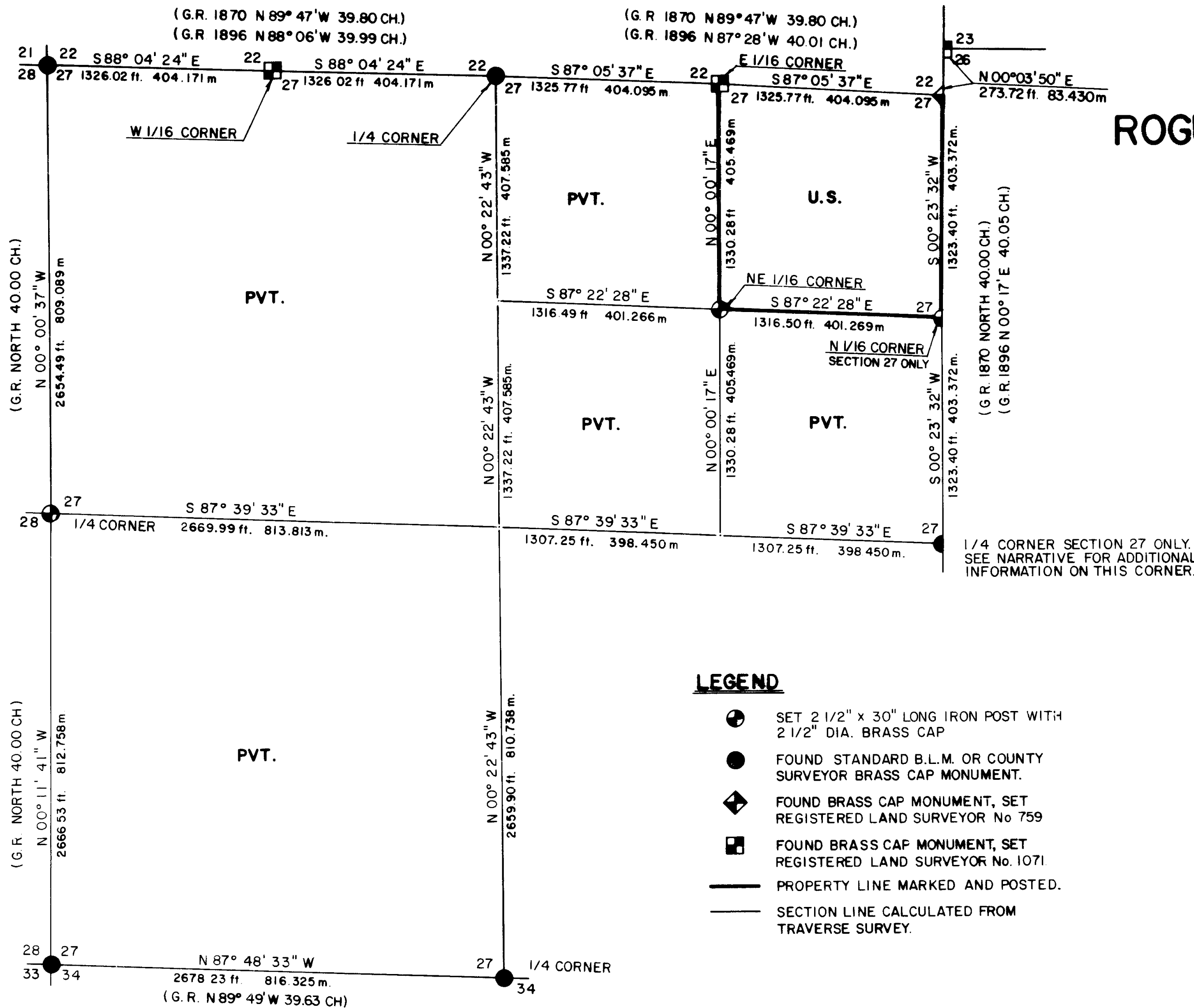
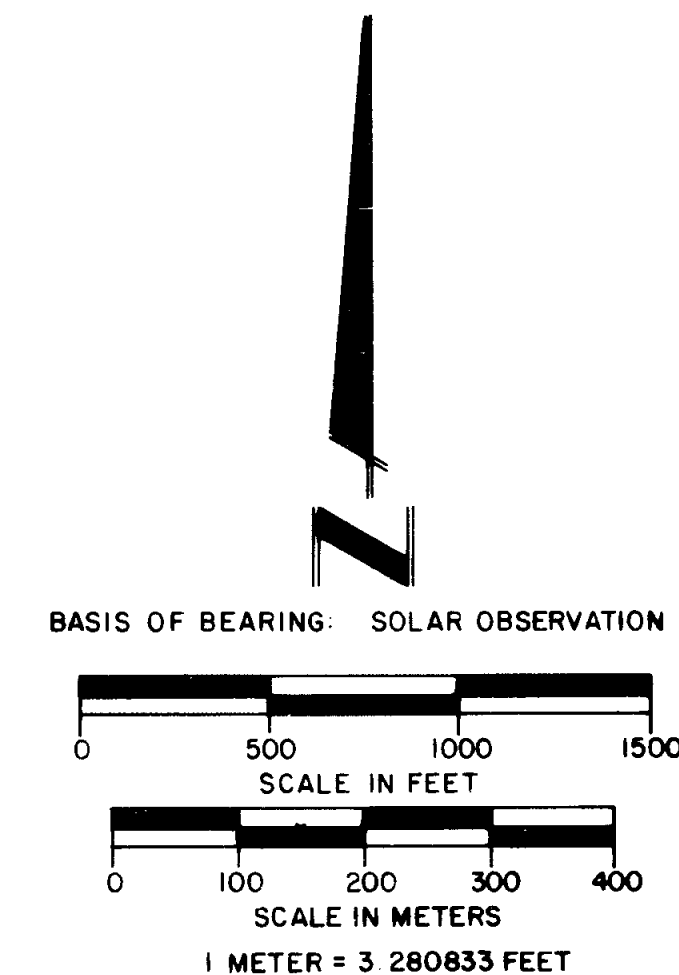


**MAP OF SURVEY  
FOR  
ROGUE RIVER NATIONAL FOREST  
P.O. BOX 520  
MEDFORD, OREGON  
DECEMBER 29, 1982**



**LEGEND**

- ⊕ SET 2 1/2" x 30" LONG IRON POST WITH 2 1/2" DIA. BRASS CAP
- FOUND STANDARD B.L.M. OR COUNTY SURVEYOR BRASS CAP MONUMENT.
- ◆ FOUND BRASS CAP MONUMENT, SET REGISTERED LAND SURVEYOR No. 759
- FOUND BRASS CAP MONUMENT, SET REGISTERED LAND SURVEYOR No. 1071.
- PROPERTY LINE MARKED AND POSTED.
- SECTION LINE CALCULATED FROM TRAVERSE SURVEY.



**HISTORY OF SURVEYS**

The exterior boundaries of Section 27 were established by William Turner and James Howard, Deputy Surveyors, under Contract No. 142 dated September 9, 1870. The North and East boundaries of Section 27 were retraced by Peter Applegate, Deputy Surveyor, under Contract No. 651 dated April 25, 1896.

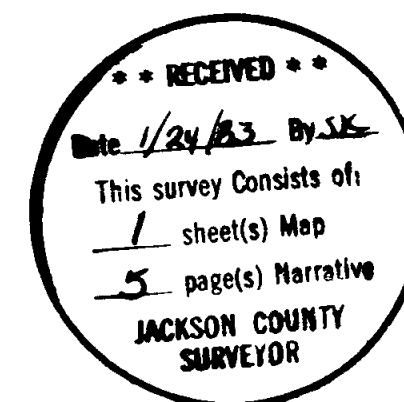
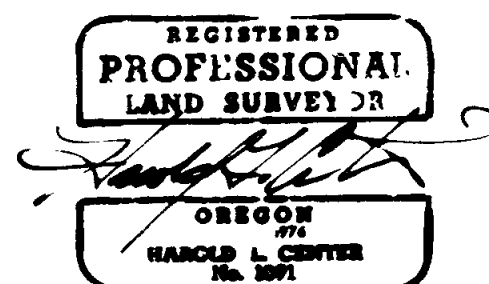
Controlling property corners were remonumented from original corner evidence by the Jackson County Surveyor and Everett L. Swain, Registered Professional Land Surveyor No. 759 (reference Jackson County Surveyor Record File No. 5796).

1/16 Corners along the North Line of Section 27 were established by Harold L. Center, Registered Professional Land Surveyor No. 1071 (Reference Record Survey No. 9499).

No other surveys of record were noted.

**CERTIFICATE OF SURVEY**

I, Harold L. Center, Registration No. 1071 Registered Professional Land Surveyor, State of Oregon, hereby certify that this plat correctly represents a survey made by me or under my direction in conformance with the laws of the State of Oregon, at the request of the U. S. Forest Service.



U.S. DEPARTMENT OF AGRICULTURE  
FOREST SERVICE  
REGION 6 ROGUE RIVER NATIONAL FOREST

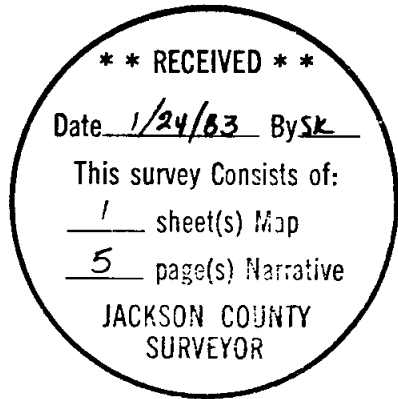
DEPENDENT RESURVEY  
AND  
SECTION SUBDIVISION  
SECTION 27, T. 32S., R. 2E., W.M.  
JACKSON COUNTY, OREGON

REVIEWED BY: *[Signature]* DATE: *1/24/83*  
REVIEWED BY: *[Signature]* DATE: *1/19/83*

An 8-inch diameter fir bears N 89° 02' E, 17.50 feet distance. Scribed  
NE 1/16 LS 1071 BT.

December 29, 1982

HAROLD L. CENTER  
Registered Professional Land Surveyor  
Oregon Certificate No. 1071



A 10-inch diameter fir bears N 22° 17' W, 15.30 feet distance. Scribed  
 1/4 S28 LS 1071 BT.

A 10-inch diameter fir bears N 52° 33' E, 10.30 feet distance. Scribed  
 1/4 S27 LS 1071 BT.

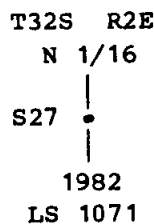
A 23-inch diameter cedar bears S 21° 56' W, 5.70 feet distance. This  
 tree had a healed blaze facing the corner. I opened the blaze and  
 found no scribe marks. The face dates to about 1935 by comparison of  
 growth rings. This tree has metal location signs attached giving a  
 bearing of North and a distance of 6.00 feet to the corner location  
 with dates to 1935.

As previously stated, corners along the North boundary of Section 27 were  
 described within the Record Survey No. 9499 and will not be redescribed  
 within this narrative.

CORNERS ESTABLISHED THIS SURVEY

North one-sixteenth corner Section 27, Township 32 South, Range 2 East.

At the corner point I set a 2 1/2-inch diameter galvanized iron post with a  
 2 1/2-inch diameter brass cap marked:



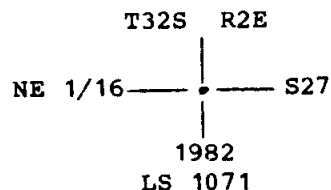
And the following references:

A 5-inch diameter fir bears S 01° 24' E, 22.60 feet distance. Scribed  
 N 1/16 S27 LS 1071 BT.

A 19-inch diameter fir bears N 47° 44' W, 28.40 feet distance. Scribed  
 N 1/16 S27 LS 1071 BT.

Northeast one-sixteenth corner Section 27, Township 32 South, Range 2 East.

At the corner point I set a 2 1/2-inch diameter galvanized iron post with a  
 2 1/2-inch diameter brass cap marked:



And the following references:

An 8-inch diameter fir bears N 31° 59' E, 30.90 feet distance. Scribed  
 X LS 1071 BT.

At the corner point I found a standard Jackson County Surveyors brass cap monument marked:

T32S R2E  
 $\frac{1}{4} \frac{S27}{S34}$   
 C.S.  
 1982

And the following references:

A 7-inch diameter fir bears S 84° 34' W, 21.50 feet distance. Scribe CS-BT visible.

A 6-inch diameter oak bears N 18° 59' E, 15.90 feet distance. Scribe CS-BT visible.

Section corner common to Sections 27, 28, 33 and 34, Township 32 South, Range 2 East.

At the corner point I found a standard Jackson County Surveyors brass cap monument marked:

Jackson County  
 T32S R2E  
 28 | 27  
 ————  
 33 | 34  
 1981

And the following references:

A 5-inch diameter cedar bears N 60° 52' E, 20.40 feet distance. Scribed CS-BT visible.

A 37-inch diameter cedar bears N 67° 00' E, 52.90 feet distance. Scribe CS-BT visible.

A 16-inch diameter pine bears S 20° 21' E, 16.40 feet distance with a healed blaze.

An 18-inch diameter fir bears S 86° 11' W, 25.70 feet distance with a healed blaze.

A 9-inch diameter pine bears N 00° 50' E, 27.60 feet distance with a healed blaze.

One-quarter corner common to Sections 27 and 28, Township 32 South, Range 2 East.

At the corner point I set a 2 1/2-inch diameter galvanized iron post with a 2 1/2-inch diameter brass cap marked:

T32S R2E  
 $\frac{1}{4}$   
 S28 | S27  
 1982  
 LS 1071

And the following references:

The center of Pacific Power's electric transmission poles No.  $\frac{6}{4}$  station 193+50 bears S 87° 16' E, 294.00 feet distance.

amazingly close. I utilized the tie shown on the plan to establish a position for the one-quarter corner. This position agreed within 6.00 feet in northing and 4.29 feet in westing of my single proportional calculation.

In addition, a corner location tag was recovered posted on a 23-inch diameter cedar in the immediate vicinity of the corner. The location tag had numerous dates and initials dating to 1935. The tag indicated the corner to be 6.00 feet North of the cedar tree. A comparison of this position to the position established by the powerline tie compared exceptionally well. I, therefore, accept the tie from the power line as a perpetuation of the position of this corner and reset this corner at record bearing and distance from the power line.

From this data, I computed the subdivision of Section 27 and ran a random line traverse adjacent to the lines requiring posting, closing this traverse to my primary traverse line. I then posted and blazed true lines as shown on the attached map. True lines were blazed with the blazes painted with red timber marking paint, and metal posts with National Forest boundary signs were established at random points along the true line.

This survey was performed utilizing a Wild T-2 Theodolite and a Wild-DI4 Electronic Distance Meter.

CORNERS ACCEPTED FOR CONTROL

One-quarter corner Section 27 only, Township 32 South, Range 2 East.

At the corner point I found a standard County Surveyors brass cap monument marked:

	1/4 COR	
27		26
T32S		R2E
	1960	

And the following references:

A 12-inch diameter fir bears N 05° 22' W, 44.40 feet distance with a healed blaze.

A 19-inch diameter cedar bears N 15° 49' E, 13.90 feet distance. This tree now dead and down.

A 12-inch diameter fir bears N 63° 52' E, 38.40 feet distance with a healed blaze.

Special Note - This corner is marked as a common corner point for Sections 26 and 27. A study of original plats indicate this corner point to serve as the one-quarter corner for Section 27 only. I made no determination as to the position of the one-quarter corner of Section 26.

One-quarter corner common to Sections 27 and 34, Township 32 South, Range 2 East.

SURVEY NARRATIVE TO COMPLY WITH  
PARAGRAPH 209.250 OREGON REVISED STATUTES

**SURVEY FOR:** Rogue River National Forest  
P. O. Box 520  
Medford, OR 97501

**LOCATION:** Section 27, Township 32 South, Range 2 East,  
Willamette Meridian, Jackson County, Oregon.

**BASIS OF BEARING:** Solar observation - This survey, based upon solar  
observation, utilized for subdivision of  
Section 22.

**PURPOSE:** To monument property corners and mark and post  
National Forest boundaries within Section 27.

**PROCEDURE:** Prior to commencement of this survey, I performed  
an investigation of the controlling corners  
necessary for the subdivision of this section.  
Corners along the common line to Sections 22 and 27  
were recovered or established during my survey of  
Section 22 and will not be redescribed within this  
narrative. The East and South one-quarter corners  
and the Southwest and Northwest section corners had  
been remonumented from original evidence by the  
Jackson County Surveyor. The West one-quarter  
corner had not been recovered.

With the recovered corner control verified, I per-  
formed a closed traverse around the perimeter of  
Section 27, tying each recovered corner to a part  
of that traverse.

From my traverse line along the West line of  
Section 27, I made ties to topography calls, line  
trees and power poles along the Pacific Power  
electric transmission line. From this data I com-  
puted search areas for the West one-quarter corner.  
A single proportional calculation found the corner  
to position on a large cedar stump making that  
calculation impractical to use. Finding this  
calculation unsatisfactory, I computed search areas  
for line trees and correlated topography calls.  
The possible remains of the southerly line tree  
called for in the original notes was recovered, but  
no markings were found to positively identify this  
stump as the line tree. No trace could be found of  
the northerly line tree. A topography call just  
North of the position of the one-quarter corner fit  
exceptionally well. A call for top of the ridge  
would fit if the call were situated at 65 chains  
rather than the 55 chains as called for within the  
original notes. One can only assume this call to  
be in error.

Contact was made with engineers employed by Pacific  
Power & Light Company, and copies of the original  
plan and profile for a powerline were obtained for  
this area. The plan and profile showed stations of  
power poles, bearings of power lines, and a tie  
from the power poles to the one-quarter corner  
location. Symbols on this maps indicated evidence  
of the original corner had been recovered and tied  
at the time of the power line location survey which  
was conducted about 1935. The bearing along the  
power line agreed with my bearing  $\pm 3-4$  minutes and  
stationing along the power line agreed with record