

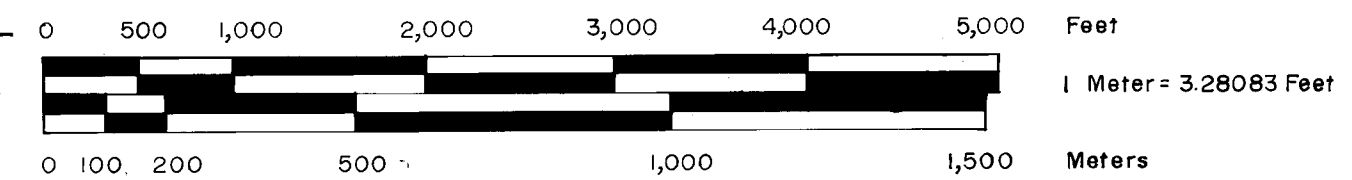
SURVEY FOR U.S. FOREST SERVICE

LOCATED IN
SECTION 31, T.40S., R.2W., W.M., SECTION 36, T.40S., R.3W., W.M.
&
SECTION 6, T.41S., R.2W., W.M., SECTION 18 & 12, T.41S., R.3W., W.M.

JACKSON COUNTY, OREGON

OCTOBER 31, 1982

SCALE: 1" = 1,000'



NOTES

- 1) Bearings based on solar observation at positions shown on map (3)
- 2) Survey method - closed traverse, using equipment: Wild T-16 & DI-4 Distomat.
- 3) Corners set by Lackland along East boundary of T.41S., R.3W., W.M. were treated as Senior Corners controlling alignment of the Range Line.
- 4) Corners set by McKenzie & Eckelson along the South boundary of T.40S., R.2W., W.M. were treated as Senior Corners controlling alignment of the Township Line.
- 5) McKenzie & Eckelson's original Township Corner of Townships 40 & 41 South, Ranges 2 and 3 West, W.M., was treated as an angle point in the Township boundary.
- 6) Eugene B. Henry's Township Corner of Townships 40 & 41 South, Range 2 West, W.M., was treated as an angle point in the Range Line.
- 7) Eugene B. Henry's 1/4 Corner of Section 31, Township 41 South, Range 2 West, W.M., was not used in computations of the subdivision of Section 6, Township 41 South, Range 2 West, W.M.
- 8) All B.T.'s have B.T. tags, a Land Survey Monument or Attention signs, and a 6" red band of paint; New B.T.'s have a 3/4" brass washer stamped "RLS 601" on lower blaze.
- 9) A 6" aluminum post with either a Land Survey Monument or Attention sign was placed at each corner.
- 10) Property line shown as marked, are marked with 6" aluminum posts and U.S. Forest Service boundary signs and are blazed and painted (red paint).
- 11) Narrative contains description of corners, corner accessories and other monuments found or set at corner location.

HISTORY OF SURVEYS

- 1) The Township lines of Township 40 South, Range 2 West, W.M. were surveyed by McKenzie & Eckelson, under Contract No 328, dated June 17, 1879.
- 2) Township 41 South, Range 3 West, W.M., was surveyed and subdivided by Samuel W. Lackland under Contract No 429, dated January 5, 1882.
- 3) Portions of the south boundary of Township 40 South, Range 2 West, W.M., were retraced and resurveyed by Eugene B. Henry, U.S. Deputy Surveyor in 1908. Portions of Township 41 South, Range 2 West, W.M., was subdivided by Henry in 1908.
- 4) Section 6 was subdivided by L.S. 31, (L.E. Ager), who set monuments in the vicinity of the 1/16 Corners marking private ownership. See Narrative for ties to the 1/16 Corners. This survey is apparently not recorded.
- 5) Robert M. Thompson, P.E. No 3683 surveyed Section 31, Township 40 South, Range 3 West, W.M. See R.S. No 4767, Jackson County Surveyor's Office filed December 31, 1971.

CERTIFICATE OF SURVEY

I, Malcolm N. Clark, a registered professional land surveyor in the State of Oregon, hereby certify that this plat and the notes hereon are a correct representation of a survey I performed during September 1982, for the U.S. Forest Service, in accordance with the statutes of the State of Oregon and with the articles of my contract.

Malcolm N. Clark
Malcolm N. Clark
Registered Professional Land Surveyor
Oregon License 601

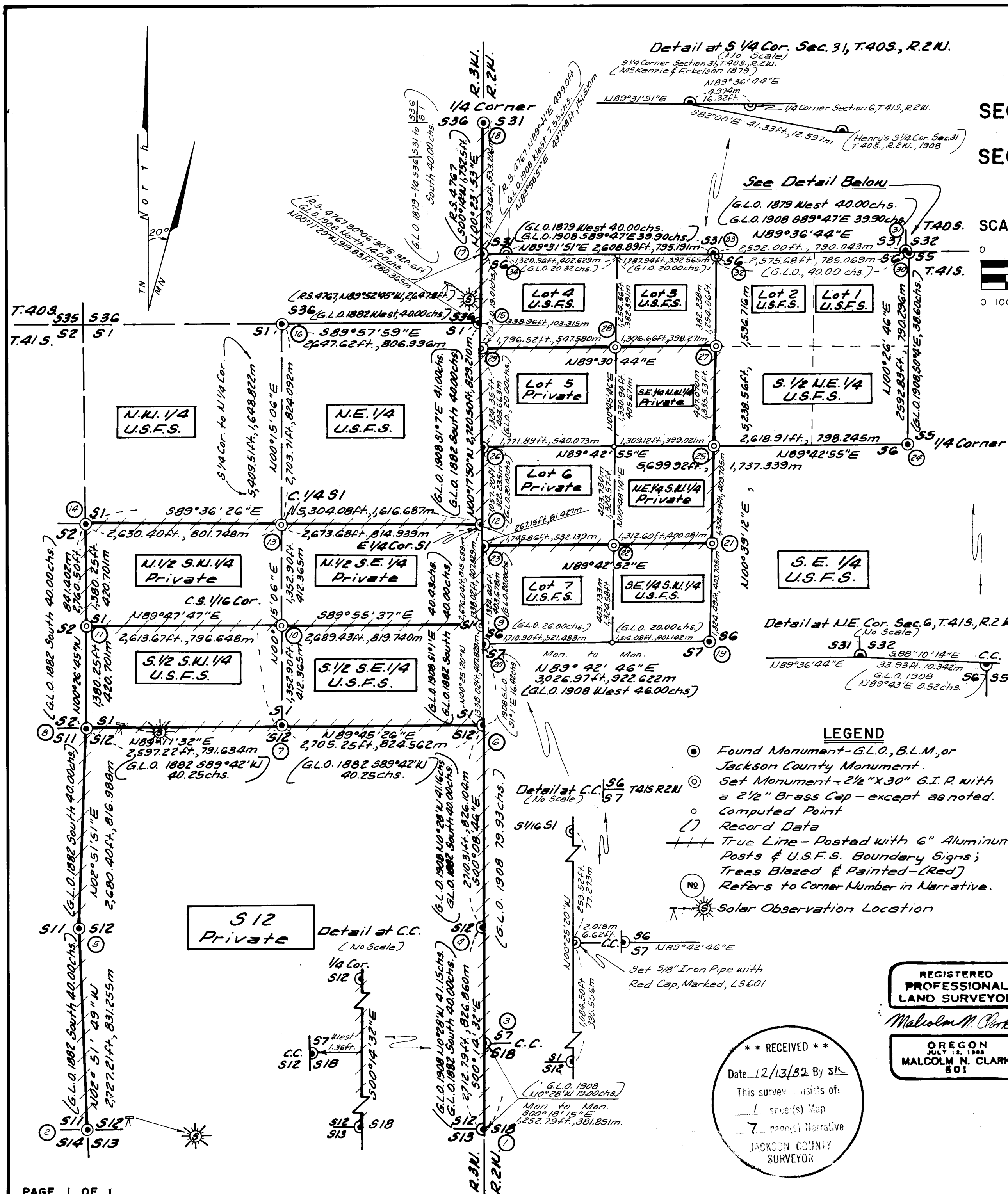
Harold J. Clark December 10, 1982
C.O.R. Date

U.S.F.S. Contract No 53-0441-2-8796N

Contractor Identification

Chickering, Green Empire, Inc.
360 S.E. 11th Street
Grant's Pass, Oregon 97526, ph. 503-474-2035

31 40 2W 1 & 12 41 3W
36 40 3W 6 41 2W



LEGEND

- Found Monument - G.L.O., B.L.M., or Jackson County Monument.
- Set Monument - 2 1/2" x 30" G.I.P. with a 2 1/2" Brass Cap - except as noted.
- Computed Point
- Record Data
- True Line - Posted with 6" Aluminum Posts & U.S.F.S. Boundary Signs; Trees Blazed & Painted - (Red)
- ☉ Refers to Corner Number in Narrative.
- ☉ Solar Observation Location

**** RECEIVED ****
Date 12/13/82 By *SLC*
This survey consists of:
- 1 sheet(s) Map
- 7 page(s) Narrative
JACKSON COUNTY SURVEYOR

REGISTERED PROFESSIONAL LAND SURVEYOR
Malcolm N. Clark
OREGON MALCOLM N. CLARK 601

34. AP
T40S R2W
S31

Set a record bearing and distance from NE BT, a 2 1/2" brass cap on a 2 1/2" x 30" iron post, 26" in the ground. Found the original 1908 corner rock monument lying on top of ground and placed rock in hole along East side of iron post.

S6

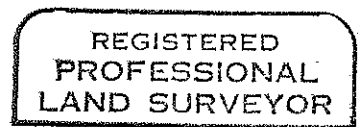
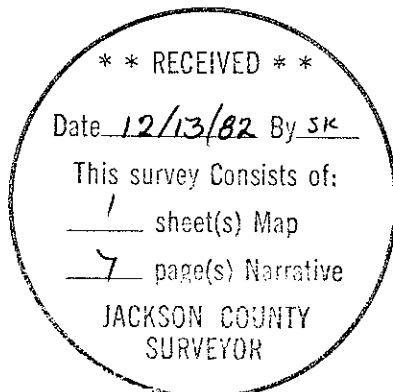
Bearing Trees Found

T41S R2W
1982
RPLS 601

A 36" P. Pine bears N27°30'E, 10.6 feet to face of blaze (Record N27°30'E, 16 links)
A 20" Oak windfall, the stump hole bears S22°30'E, 57.5 feet, (Record S29°30'E, 98 links). I could not get this BT to fit the record.
A 48" P. Pine windfall, the stump hole bears S11°20'W, 44.7 feet. (Record S18°35'W, 70 links). This BT fits reasonably good for distance only.
A 41" P. Pine bears N62°40'W, 42.5 feet, scribing visible, (Record N36°40'W, 96 links). This BT fits if record bearing was transposed to N63°40'W and the distance was transposed to 69 links, measure slope distance, 42.7 feet corrected to horizontal measurement.
A 5/8" rebar placed by Jackson County as a reference point bears N48°17'40"W, 7.54 feet.

Bearing Trees Marked

An 11" D. Fir bears N01°10'W, 30.6 feet, scribed T40S R2W S31 AP BT
An 8" D. Fir bears S59°40'W, 9.8 feet, scribed T41S R2W S6 AP BT



Malcolm N. Clark



27. T41S R2W
 C
 N1/16 | S6
 C
 1982
 RPLS 601
- Set at proportionate distance a 2 1/2" brass cap on a 2 1/2" x 30" iron post, 27" in the ground, in a mound of rocks.
- Bearing Trees Marked
 A 6" D. Fir bears S25°40'W, 8.8 feet, scribed CN 1/16 S6 BT
 An 8" D. Fir bears N49°25'W, 16.4 feet, scribed CN 1/16 S6 BT
 An unrecorded 2" iron pipe projecting 18" bears S18°32'E, 24.0 feet.
28. T41S R2W
 NW1/16 S6
 .
 1982
 RPLS 601
- Set at intersection a 2 1/2" brass cap on a 2 1/2" x 30" iron post, 28" in the ground, in a mound of rocks. An unrecorded 3/4" iron pipe bears S60°26'54"W, 37.67 feet.
- Bearing Trees Marked
 A 14" P. Pine bears N71°10'E, 156.9 feet, scribed NW 1/16 S6 BT
 A 14" D. Fir bears N03°00'W, 169.0 feet, scribed NW 1/16 S6 BT
29. T41S
 R3W | R2W
 | N1/16
 | S6
 1982
 RPLS 601
- Set at proportionate distance a 2 1/2" brass cap on a 2 1/2" x 30" iron post, 24" in the ground, in a mound of rocks.
- Bearing Trees Marked
 A 17" P. Pine bears N11°25'E, 27.9 feet, scribed N1/16 S6 BT
 A 14" D. Fir bears S39°30'E, 59.6 feet, scribed N1/16 S6 BT
 An unrecorded 3/4" axle projecting 20" bears S03°08'30"E, 12.51 feet, from which a 15" D. Fir bears S42°05'E, 8.9 feet, blazed and healed.
30. 1981
 CS
- Found a 2 1/2" Jackson County brass cap on a 2 1/2" iron post, in a mound of rocks, projecting 18" above the ground.
- Bearing Trees Found
 A 17" I. Cedar bears S50°25'E, 35.9 feet, blazed and healed.
 An 11" I. Cedar bears S70°10'W, 20.9 feet, blazed and healed.
31. T40S R2W
 S31 | S32
 S6
 T41S R2W
 1975
- Found a 3 1/2" B.L.M. brass cap on a 2" iron post, in a mound of rock, projecting 8" above the ground.
- Bearing Tree Found
 A 15" Madrone bears N26°E, 40.2 feet, blazed and healed.
 A 25" I. Cedar bears S49°E, 18.6 feet, blazed and healed.
 A 27" D. Fir bears S52°W, 15.2 feet, blazed and healed.
 A 26" D. Fir bears N62°W, 16.5 feet, blazed and healed.
32. T40S R2W
 —●—
 1/4 S6
 T41S R2W
 1982
 RPLS 601
- Set at proportionate distance a 2 1/2" brass cap on a 2 1/2" x 30" iron post, 24" in the ground in a mound of rocks.
- Bearing Trees Marked
 A 12" S. Pine bears S29°10'E, 92.4 feet, scribed 1/4 S6 BT
 A 14" D. Fir bears S57°15'W, 21.8 feet, scribed 1/4 S6 BT
 Lackland's 1/4 corner of T40S, R2W, Section 31 bears S89°36'44"W, 16.32 feet.
33. Jackson County
 T40S R2W
 S31
 1981
- Found a 2 1/2" Jackson County brass cap on a 1 1/2" iron post, projecting 10" above the ground.
- Bearing Trees Found
 A 35" opened Pine bears N25°35'E, 18.1 feet, scribing visible.
 An Oak stump hole bears S18°30'E, 16.8 feet.
 A 6" Fir bears N01°35'W, 30.3 feet, scribing visible.
 Henry's 1908 1/4 corner of Section 31, T40S, R2W bears S82°00'08"E, 41.33 feet, which is a 1 1/2" iron pipe with a yellow plastic cap marked Jackson CS from which:
Bearing Trees Found
 A 6" Cedar bears N28°10'E, 40.2 feet, scribed CS BT
 A 35" Fir bears S45°20'W, 32.5 feet, blazed and healed.
 An 8" Oak bears N57°30'W, 26.9 feet, blazed and healed.

20. T41S Found a 2 1/2" Jackson County brass cap on a 2" iron post
R3W R2W in a mound of rock, projecting 9" above the ground.
- 1 | 6
| 7
- Bearing Trees Found
- A 17" D. Fir bears N47°05'E, 23.1 feet, scribing visible.
A 5" D. Fir bears S59°10'E, 31.7 feet, scribing visible.
- CS
1981
- Set a 5/8" x 30" iron pin with red cap marked LS 601
S89°42'46"W, 6.62 feet from closing corner monument at the point
of intersection with the Range line.
21. T41S R2W Set at proportionate distance a 2 1/2" brass cap on a 2 1/2" x
30" iron post 26" in the ground.
- C
S1/16 | S6
| C
- Bearing Trees Marked
- A 15" D. Fir bears N36°45'E, 12.6 feet, scribed CS 1/16 S6 BT
A 14" D. Fir bears N61°35'W, 21.8 feet, scribed CS 1/16 S6 BT
- 1982
RPLS 601
- An unrecorded 2" iron pipe bears S17°22'E, 17.6 feet, from which:
A 10" D. Fir bears N85°E, 3.6 feet, scribed CS 1/16 LS31
A 19" D. Fir bears N88°W, 7.0 feet, blazed and healed.
22. T41S R2W Set at intersection a 2 1/2" brass cap on a 2 1/2" x
30" iron post 24" in the ground.
- SW1/16 S6
•
- Bearing Trees Marked
- A 10" D. Fir bears N58°55'E, 18.0 feet, scribed SW 1/16 S6 BT
A 6" W. Fir bears S22°30'W, 42.5 feet, scribed SW 1/16 S6 BT
- 1982
RPLS 601
23. T41S Set at proportionate distance a 2 1/2" brass cap on a 2 1/2"
R3W R2W x 30" iron post, 20" in the ground in a mound of rocks.
- S 1/16
| S6
- Bearing Trees Marked
- An 18" Fir bears N06°45'E, 19.5 feet, scribed S1/16 S6 BT
A 12" Fir bears N81°17'E, 38.5 feet, scribed S1/16 S6 BT
- 1982
RPLS 601
- An unrecorded 1" iron pipe bears S22°06'42"W, 18.43 feet.
24. T41S R2W Found a 2 1/2" Jackson County brass cap on a 2 1/2" iron post
1/4S in a mound of rock, projecting 6" above the ground.
- 6 | 5
- Bearing Trees Found
- A 12" B. Oak bears N83°40'E, 27.1 feet, blazed and healed.
A 50" P. Pine bears N83°45'W, 63.5 feet, blazed and healed.
A 7" D. Fir bears N34°30'W, 18.5 feet, scribed CS BT
- CS
1981
25. T41S R2W Set at intersection of North-South and East-West centerline a
C1/4 S6 2 1/2" brass cap on a 2 1/2" x 30" iron post 22" in the ground,
• in a mound of rocks. The corner falls in an old cat road, about
10 feet East of a barbed wire fence.
- 1982
RPLS 601
- Bearing Trees Marked
- An 11" P. Pine bears N11°10'E, 36.1 feet, scribed C1/4 S6 BT
A 16" D. Fir bears N82°15'E, 55.5 feet, scribed C1/4 S6 BT
26. T41S Set at proportionate distance a 2 1/2" brass cap on a 2 1/2" x
R3W R2W 30" iron post, 24" in the ground, in a mound of rocks.
- 1/4 S6
- Bearing Trees Marked
- A 14" D. Fir bears N21°03'E, 5.5 feet, scribed 1/4 S6 BT
An 18" D. Fir bears S63°11'E, 33.7 feet, scribed 1/4 S6 BT
- 1982
RPLS 601
- An unrecorded 1 1/2" iron pipe, projecting 24" bears
S21°10'30"E, 13.18 feet.

13. T41S R3W Set a 2 1/2" brass cap on a 2 1/2" x 30" iron post, 24" in
C1/4 S1 the ground, in a mound of rocks.
1982 Bearing Trees Marked
RPLS 601 A 12" D. Fir bears N88°55'E, 24.9 feet, scribed C1/4 S1 BT
An 8" D. Fir bears S19°40'E, 10.2 feet, scribed C1/4 S1 BT
14. T41S R3W Found a standard 3 1/2" B.L.M. brass cap on a 2" iron post in
1/4 a mound of rocks, projecting 5" above the ground.
S2 S1 Bearing Trees Found
1967 A 15" P. Pine stump bears S70°25'E, 57.4 feet, scribing visible.
A 6" I. Cedar bears S11°15'E, 15.2 feet, scribing visible.
A 14" windfall, scribing visible, root hole indeterminate, bears
S24°30'W, 39.8 feet.
A 23" D. Fir bears S34°40'W, 49.0 feet, blazed and healed.
15. T40S T41S Found a 2 1/2" Jackson County brass cap on a 2" iron post,
R3W R2W projecting 8" above the ground. A 10" x 15" x 6" quartz is
adjacent to the iron post on the SW side.
36 | 6
1 | Bearing Trees Found
CS 1981 A 15" D. Fir bears N09°25'E, 13.2 feet, blazed and healed.
T41S A 26" D. Fir snag bears N56°20'E, 130.6 feet, blazed and healed.
A 10" D. Fir bears S52°35'E, 21.8 feet, scribing visible.
An 18" D. Fir snag bears S27°05'E, 47.5 feet, blazed and healed.
A 9" D. Fir snag bears S33°00'W, 24.0 feet, blazed and healed.
A 30" Madrone bears S55°10'W, 58.4 feet, blaze hollow.
A 13" D. Fir bears S76°05'W, 24.6 feet, blazed and healed.
A 25" Pine snag bears N46°45'W, 20.5 feet, scribing visible.
16. Jackson County Found a 2 1/2" Jackson County brass cap on a 1" iron post,
T40S R3W 1981 projecting 6" above the ground.
1/4S 36 | Bearing Trees Found
1 | A 9" D. Fir bears N18°20'E, 17.4 feet, blazed and healed.
T41S A 15" P. Pine bears N49°25'E, 24.1 feet, blazed and healed.
A 7" D. Fir bears S62°10'E, 16.3 feet, scribing visible.
A 20" B. Oak, windfall, the root hole bears S65°20'W, 7.0 feet.
17. T40S T40S Found a 2 1/2" Jackson County brass cap on a 2" iron post in a
R3W R2W mound of rocks, projecting 10" above the ground.
36 | 31 Bearing Trees Found
6 | A 9" P. Pine bears N49°45'E, 20.1 feet, scribing visible.
T41S A 9" D. Fir bears S49°00'E, 18.7 feet, scribing visible.
An 8" D. Fir bears N62°45'W, 11.8 feet, scribing visible.
CS
1981
18. Jackson County Found a 2 1/2" Jackson County brass cap on a 1" iron post in
T40S 1981 a mound of rock, projecting 14" above the ground; a 5/8" rebar
R3W R2W is North 0.6 feet from the brass cap.
36 | 31 Bearing Trees Found
1/4S A 6" B. Oak bears S06°20'W, 27.3 feet, scribed CS BT.
A 5" P. Pine bears S80°30'W, 25.9 feet, scribed CS BT.
A 4" dead Manzanita bears N35°W, 7.5 feet, blazed.
19. T41S R3W Found a 2 1/2" Jackson County brass cap on a 2 1/2" iron post
6 in a mound of rock, projecting 8" above the ground.
1/4S 7 | Bearing Trees Found
CS A 32" Fir bears S57°32'E, 33.7 feet, blazed and healed.
1981 An 8" D. Fir bears N30°45'E, 26.3 feet, scribing visible.

6. T41S R3W R2W

1	7
12	
CS	

 1981
 Found a 2 1/2" Jackson County brass cap on a 2 1/2" iron post in a mound of rocks, projecting 8" above the ground.
Bearing Trees Found
 A 38" D. Fir bears N28°30'E, 46.8 feet, blazed and healed.
 A 50" P. Pine bears S66°50'E, 73.3 feet, blazed and healed.
 A 7" Madrone bears S05°40'W, 45.7 feet, tagged but no marks.
 A 6" D. Fir bears S78°50'W, 28.0 feet, scribed CS BT
 A 40" D. Fir bears N42°50'W, 26.0 feet, blazed and healed.
7. T41S R3W

S1	
1/4 S12	

 1967
 Found a 3 1/2" B.L.M. brass cap on a 2 1/2" iron post in a mound of rocks, projecting 9" above the ground.
Bearing Trees Found
 A 7" D. Fir bears N02°10'W, 35.6 feet, blazed and healed.
 A 12" D. Fir bears S82°25'E, 28.4 feet, blazed and healed.
 A 14" Madrone bears S46°15'W, 13.1 feet, blazed and healed.
8. T41S R3W

2	1
11	12
CS	

 1981
 Found a 2 1/2" Jackson County brass cap on a 2 1/2" iron post, in a mound of rocks, projecting 10" above the ground.
Bearing Trees Found
 An 8" I. Cedar bears N51°25'E, 40.2 feet, scribed CS BT
 A 14" T. Fir bears S46°20'E, 43.4 feet, scribed CS BT
 A 9" D. Fir bears S48°25'W, 22.7 feet, scribed CS BT
 A 30" D. Fir bears N22°W, 6.8 feet, blazed and healed.
9. T41S R3W R2W

S1/16	
S1	

 1982
 RPLS 601
 Set a 2 1/2" brass cap on a 2 1/2" x 30" iron post, 24" in the ground, in a mound of rocks.
Bearing Trees Marked
 A 5" D. Fir bears S59°56'W, 45.4 feet, scribed S1/16 S1 BT
 A 6" D. Fir bears N40°53'W, 37.5 feet, scribed S1/16 S1 BT
10. T41S R3W

C	
S1/16	S1
C	

 1982
 RPLS 601
 Set a 2 1/2" brass cap on a 2 1/2" x 30" iron post, 36" in the ground. This corner is in a road, set 6" below the surface of the road.
Bearing Trees Marked
 A 9" D. Fir bears N36°45'E, 35.4 feet, scribed CS 1/16 S1 BT
 A 14" D. Fir bears S28°15'E, 38.5 feet, scribed CS 1/16 S1 BT
References - Set 4 5/8" x 30" iron pins with red cap marked LS 601.
 S89°55'37"E at 38.90 feet and at 101.86 feet.
 S00°15'06"W at 24.99 feet and at 79.56 feet.
11. T41S R3W

S1/16	
S2	S1

 1982
 RPLS 601
 Set a 1 1/2" brass cap on a 2 1/2" x 30" iron post 24" in the ground, in a mound of rocks. An unrecorded 3/4" iron pipe bears N02°38'W, 61.99 feet from the corner.
Bearing Trees Marked
 A 10" D. Fir bears S46°05'E, 10.1 feet, scribed S1/16 S1 BT
 An 8" W. Fir bears S55°35'W, 21.6 feet, scribed S1/16 S2 BT
12. T41S R3W

1/4 S1	
CS	

 1981
 Found a 2 1/2" Jackson County brass cap on a 1" iron post, projecting 3" above the ground.
Bearing Trees Found
 A 22" D. Fir snag bears N06°20'E, 14.0 feet, scribing visible
 A 19" W. Fir bears S16°50'E, 12.5 feet, blazed and healed.
 A 19" W. Fir bears S30°00'W, 45.1 feet, scribed CS BT
 A 10" maple snag bears N64°30'W, 23.0 feet, scribing visible.

At McKenzie and Eckelson's original Southwest Township corner to Townships 40 and 41 South, Ranges 2 and 3 West, Willamette Meridian, there are major discrepancies between the recovered positions of the bearing tree marked in 1879 and the Official Record of the corner accessories. Eugene B. Henry in 1908 remonumented this corner with an 18" x 12" x 12" rock, which I found lying loose on the surface of the ground. I re-established this corner by using record bearing and distance for the Northeast bearing tree. Then Southwest bearing tree position fit for distance and the Northwest bearing tree position fit, if the bearing was transposed, (Record N36°W becomes N63°W) and the distance was transposed (Record 96 links becomes 69 links measured on the slope). The Southeast bearing tree I could not make fit. The distance from this position is very close to the Henry's record bearing and distance to the corner he established as angle point and the Southwest corner of Townships 40 and 41 South, Ranges 2 and 3 West, Willamette Meridian. (See Map)

Corners Found or Set in this Survey

1. T41S T41S
R3W R2W
S12 |
S13 | S18
1915
Found a 3 1/2" G.L.O. brass cap on a 2" iron post in a mound of rocks, projecting 21" above the ground.
Bearing Trees Found
A 35" T. Fir bears N52°30'E, 12.5 feet, blazed and healed.
A 16" rotten stump, no scribing, bears S37°40'W, 9.5 feet.
A 19" T. Fir bears S66°35'W, 23.2 feet, scribing visible.
A 19" T. Fir bears N47°40'W, 37.6 feet, scribing visible.
2. T41S R3W
S11 | S12
S14 | S13
1915
Found a 2 1/2" G.L.O. brass cap on a 1 3/4" iron post in a mound of rock, projecting 14" above the ground.
Bearing Trees Found
A 10" D. Fir bears N10°30'E, 31.7 feet, scribing visible (1981).
A 25" P. Pine snag bears N10°30'E, 55.5 feet, scribing visible.
A 42" P. Pine bears S13°25'E, 23.4 feet, blazed and healed.
A 19" D. Fir bears S53°20'W, 30.1 feet, blazed and healed.
A 46" P. Pine stump bears S68°25'W, 106.0 feet, blazed and healed.
A 26" D. Fir bears N24°15'W, 23.0 feet, scribing visible.
A 24" P. Pine root hole (windfall) bears N06°45'W, 115.0 feet, scribing visible.
3. T41S
R3W R2W
CC | S7
S12 | S18
191
Found a 3 1/2" G.L.O. brass cap on a 2 1/2" iron post in a mound of rock, projecting 12" above the ground.
Bearing Trees Found
A 26" T. Fir bears N11°30'E, 24.2 feet, blazed and healed.
Bearing Tree Marked
A 9" T. Fir bears S20°10'E, 58.9 feet, scribed T41S R2W S18 CC BT
Note: Cap reads at N45°W.
4. T41S
R3W 1981
1/4 S12 |
Found a 2 1/2" Jackson County brass cap on a 1 1/4" iron post in a mound of rocks, projecting 6" above the ground.
Bearing Trees Found
A 12" D. Fir bears S72°00'E, 31.1 feet, scribed CS BT
A 36" T. Fir windfall, scribing visible, the root hole bears S32°E, 17.5 feet.
A 13" D. Fir bears S56°35'W, 10.6 feet, scribed CS BT
5. T41S R3W
1/4
S11 | S12
1967
Found a 3 1/2" B.L.M. brass cap on a 2" iron post, in a mound of rocks, projecting 12" above the ground.
Bearing Trees Found
An 18" W. Fir bears S61°15'E, 19.8 feet, blazed and healed.
A 25" D. Fir bears S71°W, 66.7 feet, blazed and healed.

SURVEY NARRATIVE
ORS 209.250

Survey for: U. S. Forest Service
Rogue River National Forest
1319 East McAndrews Road
Medford, Oregon 97501
Contract No. 53-04HI-2-8796N

Survey by: Chickering-Green Empire, Inc.
360 S. E. "H" St.
Grants Pass, Oregon 97526
(Malcolm N. Clark: RPLS 601 OR)

Location: Section 31, Township 40 South, Range 2 West, Willamette Meridian
Section 36, Township 40 South, Range 3 West, Willamette Meridian
Section 6, Township 41 South, Range 2 West, Willamette Meridian
Section 1 and 12, Township 41 South, Range 3 West, Willamette Meridian

Date: October 31, 1982

Equipment: Wild T-16 and DI-4 Distomat

Purpose: To mark certain property lines between the U. S. Forest Service and private lands and to subdivide as shown, Section 6, Township 41 South, Range 2 West and Section 1, Township 41 South, Range 3 West.

Bearing Base: Solar observation taken 400 feet East of the Southwest corner of Section 16, Township 41 South, Range 3 West, Willamette Meridian and verified by additional solar observations taken at positions shown on the map.

Procedure: Random closed traverses were run in the approximate locations of the property lines to be marked and to all controlling corners. Offsets from the random line to the true line were made and the lines were posted with 6 foot aluminum post with U. S. Forest Service boundary signs, trees were blazed within 3 feet of the true line and the blazes painted red. All corners set are 2 1/2" outside diameter pipe, 30" long with a flared split flange at the bottom, with a 2 1/2" diameter brass cap marked as shown. Points of intersection at closing corners were monumented with a 5/8" iron pin with a red plastic cap marked LS 601, as noted on the map. All BT's have either a Land Survey Monument or an Attention sign on the back, BT tags, and a 6" red band of paint. New BT's marked also have a 3/4" brass washer marked RLS 601 on the lower blaze. There is a 6' aluminum post with a Land Survey Monument or an Attention sign at each corner location.

Eugene B. Henry in 1908 set a corner along the Township line of Townships 40 and 41 South, Range 2 West to re-establish the South 1/4 corner of Section 31, Township 40 South, Range 2 West, Willamette Meridian, as he did not recover McKenzie and Eckelson's corner set in 1879. McKenzie and Eckelson's corner was later recovered, making Henry's 1/4 corner invalid. Henry's field notes and bearing tree marking indicate that this 1/4 corner was common to Sections 31 and 6, however, he subsequently established the Northeast of Section 6, Township 41 South, Range 2 West, Willamette Meridian as a closing corner. Henry's plat shows that this 1/4 corner was meant to be the 1/4 corner of Section 31, Township 40 South, Range 2 West, Willamette Meridian, and not to be used as the North 1/4 corner of Section 6.

Henry's 1908 plat was used as the basis of proportions along the North and West line of Section 6, Township 41 South, Range 3 West, Willamette Meridian.