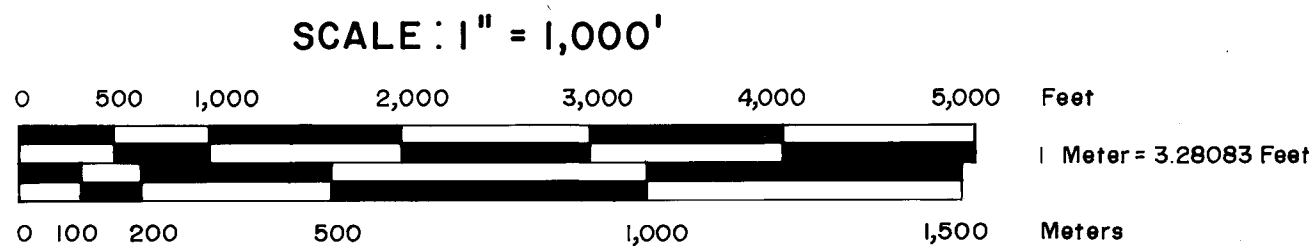
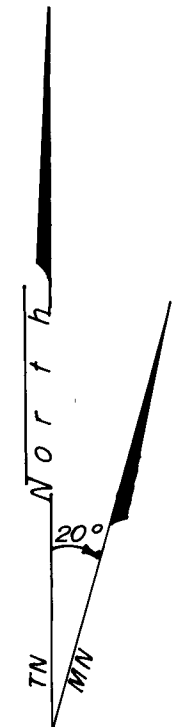


# SURVEY FOR U.S. FOREST SERVICE LOCATED IN SECTIONS 10,11,14,15, & 16, T.41S., R.3W., W.M.

JACKSON COUNTY, OREGON

OCTOBER 31, 1982



### LEGEND

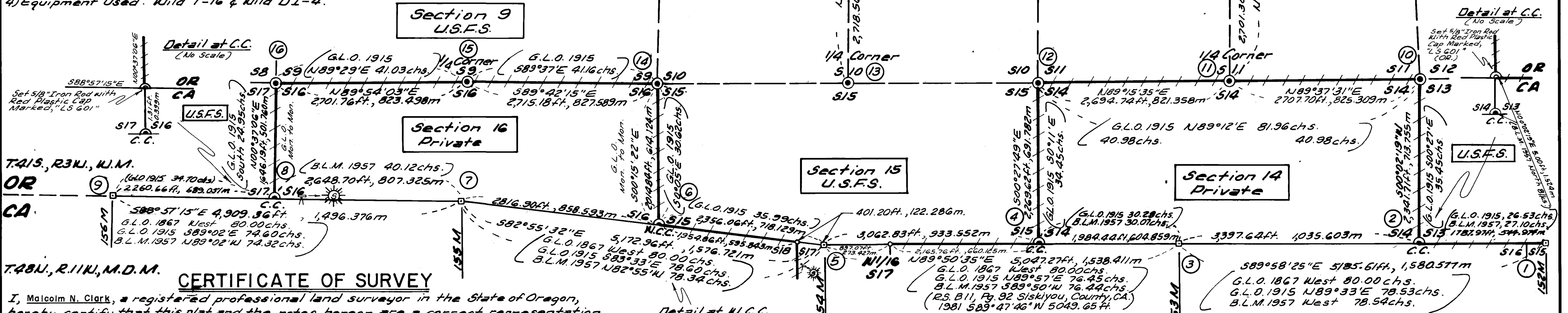
- G.L.O. State Line Monument 3/4" B.C. 3" I. Post
- ⊙ Found Monument - G.L.O. or B.L.M. Standard Monument
- ⊙ Set Monument - 2 1/2" x 30" G.I.P. with a 2 1/2" Brass Cap - except as noted.
- Computed Point
- ( ) Record Data
- +++ True Line - Posted with 6" Aluminum Posts & U.S.F.S. Boundary Signs; Trees Blazed & Painted - (Red)
- NR Refers to Corner Number in Narrative.

### HISTORY OF SURVEYS

- 1) The Oregon-California State Line was surveyed in 1867 by D.G. Mejer, Deputy Surveyor. The State Line was resurveyed by F.W. Rodolf & Aubrey H. Bond, under Special Instructions dated February 15, 1915, Group 18. The State Line was retraced by the B.L.M. from 149 Mile Corner to 156 Mile Corner in 1957.
- 2) Township 41 South, Range 3 West, W.M. was subdivided by Samuel W. Lackland under Contract No. 429, dated January 5, 1882. Sections adjacent and North of State Line were resurveyed by F.W. Rodolf under Special Instruction dated February 15, 1915 Group 18, superseding Lackland's 1882 survey.
- 3) L.E. Ager surveyed Section 10, T.41S., R.3W., W.M., R.S. 889, June, 1956.
- 4) The B.L.M. remonumented certain original corner points in Township 41 South, Range 3 West, W.M. under General Special Instruction, Group No. 350, Oregon, dated May 3, 1957.

### NOTES

- 1) Distances and bearings along the State Line are between the 1868 G.L.O. positions for 1/4 Corner the Mile Corners as computed from the 1915 G.L.O. monument positions. Line trees marked by F.W. Rodolf in 1915 under his resurvey of the State Line were not used in this survey - (Manual of Survey Instructions, 1973, B.L.M. Technical Bulletin 6, Sections G-4 & G-15)
- 2) Bearings and distances shown to Closing Corners along the State Line are to points of intersection, determined using F.W. Rodolf's Closing and Section Corners.
- 3) See Record of Dependent Resurvey filed in Siskiyou County, California, by Chickering-Green Empire, Inc., (Malcolm N. Clark L.L.S. CA. No. 4940) for data regarding corners in T.48N., R.10W., M.D.M. surveyed to and tied in conjunction with this U.S.F.S. contract.
- 4) Equipment Used: Wild T-16 & Wild DI-4.



T.41S., R.3W., W.M.

OR CA

CA

T.48N., R.11W., M.D.M.

### CERTIFICATE OF SURVEY

I, Malcolm N. Clark, a registered professional land surveyor in the State of Oregon, hereby certify that this plat and the notes hereon are a correct representation of a survey I performed during September 1982, for the U.S. Forest Service, in accordance with the Statutes of the State of Oregon, and with the articles of my contract.

*Malcolm N. Clark*  
 Malcolm N. Clark  
 Registered Professional Land Surveyor  
 Oregon License 601

REGISTERED  
 PROFESSIONAL  
 LAND SURVEYOR

*Malcolm N. Clark*

OREGON  
 JULY 12, 1963  
 MALCOLM N. CLARK  
 601

\*\* RECEIVED \*\*

Date 12/13/82 By St

This survey consists of:

1 sheet(s) Map

5 page(s) Narrative

JACKSON COUNTY SURVEYOR

Detail at M.C.C. (No Scale)

Detail at C.C. (No Scale)

Detail at C.C. (No Scale)

Accepted And Approved For The U.S. Forest Service

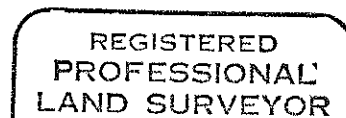
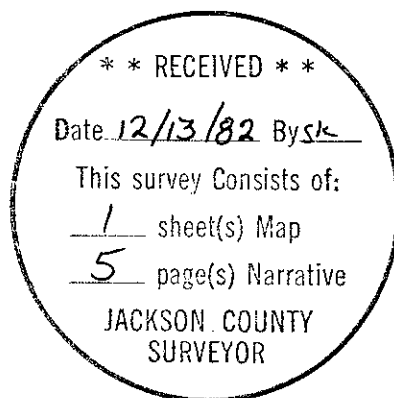
*Shirley H. ...*  
 December 10, 1982  
 C.O.R. Date

U.S.F.S. Contract No 53-0441-2-8796N

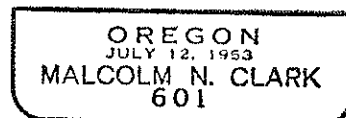
Contractor Identification

Chickering, Green Empire, Inc.  
 380 S.E. 41st Street  
 Grants Pass, Oregon 97526, ph 503-474-2035

22. T41S R3W  
N1/16  
S10 | S11  
1982  
RPLS 601
- Set a 2 1/2" brass cap on a 2 1/2" x 30" iron post 24" in the ground, in a mound of rocks.
- Bearing Trees Marked
- An 8" D. Fir bears S81°40'E, 7.5 feet, scribed N1/16 S11 BT  
A 9" D. Fir bears N24°15'W, 21.0 feet, scribed N1/16 S10 BT
23. T41S R3W  
 $\frac{1}{4}$  S2  
S11  
1967
- Found a 3" B.L.M. brass cap on a 2" iron post, in a mound of rock, projecting 6" above the ground.
- Bearing Trees Found
- A 20" D. Fir bears N09°25'E, 11.1 feet, blazed and healed.  
A 22" D. Fir bears S33°00'E, 17.9 feet, blazed and healed.
24. T41S R3W  
 $\frac{S2}{W1/16}$  S11  
1982  
RPLS 601
- Set a 2 1/2" brass cap on a 2 1/2" x 30" iron post, 24" in the ground, in a mound of rocks.
- Bearing Trees Marked
- A 10" D. Fir bears S06°30'W, 10.4 feet, scribed W1/16 S11 BT  
A 10" D. Fir bears N77°05'W, 16.2 feet, scribed W1/16 S2 BT
25. T41S R3W  
S3 | S2  
S10 | S11  
1967
- Found a 3" B.L.M. brass cap on a 2" iron post, in a mound of rock, projecting 8" above the ground.
- Bearing Trees Found
- An 11" W. Fir bears N50°40'E, 39.7 feet, blazed and healed.  
A 36" D. Fir stump bears S01°35'E, 22.0 feet, blazed and healed.  
A 27" D. Fir bears S10°45'W, 21.4 feet, blazed and healed.  
A 42" P. Pine stump bears N31°25'W, 119.1 feet, burned.  
A 21" D. Fir bears N11°05'W, 39.0 feet, blazed and healed.
- New Bearing Tree Marked
- A 14" D. Fir bears S12°15'E, 87.8 feet, scribed T41S R3W S11 BT
26. T41S R3W  
 $\frac{1}{4}$  S3  
S10  
1967
- Found a 3" B.L.M. brass cap on a 2" iron post in a mound of rocks, projecting 16" above the ground.
- Bearing Trees Found
- A 8" W. Fir bears N64°00'E, 32.1 feet, blazed and healed.  
A 7" W. Fir bears S63°05'W, 23.6 feet, blazed and healed.



*Malcolm N. Clark*



New Bearing Trees Marked

A 15" P. Pine bears N36°55'E, 19.3 feet, scribed T41S R3W S10 BT  
 A 13" P. Pine bears S87°00'E, 34.8 feet, scribed T41S R3W S15 BT  
 A 14" D. Fir bears S43°05'W, 33.0 feet, scribed T41S R3W S16 BT

15. 1/4 S9  
 S16

Found a 2 1/2" G.L.O. brass cap on a 1" iron post in a mound of rocks, projecting 14" above the ground.

1915

Bearing Trees Found

A 12" Oak windfall, scribing visible, the root hole bears S70°00'E, 20.9 feet.  
 A 23" B. Oak snag bears N57°22'W, 25.2 feet, blazed and healed.

New Bearing Trees Marked

A 12" D. Fir bears S37°00'E, 13.6 feet, scribed 1/4 S16 BT  
 A 15" D. Fir bears N61°25'W, 22.3 feet, scribed 1/4 S9 BT

16. T41S R3W  
 S8 | S9  
 S17 | S16

Found a 2 1/2" G.L.O. brass cap on a 1 3/4" iron post in a mound of rocks, projecting 16" above the ground, at the base of a rock ledge.

1915

Bearing Trees Found

An 18" B. Oak bears N50°40'E, 43.1 feet, blazed and healed.  
 A 15" B. Oak bears S24°15'E, 41.5 feet, blazed and healed.  
 A 21" B. Oak bears S72°10'W, 41.3 feet, blazed and healed.

New Bearing Trees Marked

A 15" D. Fir bears N28°20'E, 42.5 feet, scribed T41S R3W S9 BT  
 A 10" P. Pine bears S25°05'E, 55.1 feet, scribed T41S R3W S16 BT  
 A 12" D. Fir bears S45°10'W, 64.1 feet, scribed T41S R3W S17 BT  
 A 12" D. Fir bears N07°35'W, 26.0 feet, scribed T41S R3W S8 BT

17. T41S R3W  
 1/4

Found a 3 1/2" B.L.M. brass cap on a 2" iron post, in a mound of rocks, projecting 12" above the ground.

S11 | S12

1967

Bearing Trees Found

An 18" W. Fir bears S61°15'E, 19.8 feet, blazed and healed.  
 A 25" D. Fir bears S71°W, 66.7 feet, blazed and healed.

18. T41S R3W  
 1/4

Found a 3" B.L.M. brass cap on a 2" iron post in a mound of rocks, projecting 8" above the ground.

S10 | S11

1967

Bearing Trees Found

An 11" W. Fir bears N12°15'E, 8.6 feet, blazed and healed.  
 A 13" W. Fir bears S87°45'E, 30.3 feet, blazed and healed.  
 A 16" W. Fir bears N29°30'W, 10.5 feet, blazed and healed.

19. T41S R3W  
 C1/4 S10

Set a 2 1/2" brass cap on a 2 1/2" x 30" iron post, 24" in the ground.

1982

RPLS 601

Bearing Trees Marked

An 8" D. Fir bears S72°04'E, 27.6 feet, scribed C 1/4 S10 BT  
 A 7" P. Pine bears S31°35'W, 7.0 feet, scribed C 1/4 S10 BT

20. T41S R3W  
 1/4

Found a 3" B.L.M. brass cap on a 2" iron post in a mound of rocks, projecting 14" above the ground.

S9 | S10

1967

Bearing Trees Found

A 22" D. Fir bears S82°W, 19.6 feet, blazed and healed.  
 A 15" D. Fir bears S02°E, 12.4 feet, blazed and healed.

21. T41S R3W  
 NW1/16 S11

Set a 2 1/2" brass cap on a 2 1/2" x 30" iron post, 24" in the ground, in a mound of rocks.

1982

RPLS 601

Bearing Trees Marked

A 27" P. Pine bears S17°15'E, 28.4 feet, scribed NW1/16 S11 BT  
 A 23" P. Pine bears S76°10'W, 27.3 feet, scribed NW1/16 S11 BT

9. 

42L	OREGON	156M
CALIFORNIA		

  
1915
- Found a 3 1/2" G.L.O. brass cap on a 2 1/2" iron post projecting 4" above the ground, 2.5 feet East of 2 foot high vertical rock ledge. The original 1868 mile corner is West 6.60 feet (10 links).
- Bearing Trees Found
- A 12" B. Oak bears N11°35'E, 15.8 feet, blazed and healed.  
 A 21" P. Pine bears N50°15'E, 38.4 feet, blazed and healed.  
 A 21" B. Oak bears S55°15'E, 57.5 feet, blazed and healed.  
 (The SW fork of a twin tree)  
 A 6' x 6' x 5" mound of rock bears S86°20'W, 13.3 feet.  
 A 24" P. Pine bears N22°35'W, 155.6 feet, blazed and healed.  
 A 22" P. Pine bears N02°50'W, 82.0 feet, blazed and healed.
10. 

T41S	R3W
S11	S12
S14	S13

  
1915
- Found a 2 1/2" G.L.O. brass cap on a 1 3/4" iron post in a mound of rock, projecting 14" above the ground.
- Bearing Trees Found
- A 10" D. Fir bears N10°30'E, 31.7 feet, scribing visible (1981).  
 A 25" P. Pine snag bears N10°30'E, 55.5 feet, scribing visible.  
 A 42" P. Pine bears S13°25'E, 23.4 feet, blazed and healed.  
 A 19" D. Fir bears S53°20'W, 30.1 feet, blazed and healed.  
 A 46" P. Pine stump bears S68°25'W, 106.0 feet, blazed and healed.  
 A 26" D. Fir bears N24°15'W, 23.0 feet, scribing visible.  
 A 24" P. Pine root hole (windfall) bears N06°45'W, 115.0 feet, scribing visible.
11. 

1/4	S11
	S14

  
1915
- Found a 2 1/2" G.L.O. brass cap on a 1" iron post in a mound of rock, projecting 16" above the ground.
- Bearing Trees Found
- A 16" B. Oak bears S22°50'W, 61.4 feet, rotten face, no scribing.  
 A 23" P. Pine bears N24°30'W, 84.9 feet, blazed and healed.
- New Bearing Tree Marked
- A 6" I. Cedar bears S29°30'E, 20.7 feet, scribed 1/4S 14 BT
12. 

T41S	R3W
S10	S11
S15	S14

  
1915
- Found a 2 1/2" G.L.O. brass cap on a 2" iron post in a mound of rocks, projecting 14" above the ground.
- Bearing Trees Found
- A 37" P. Pine bears N30°00'E, 20.1 feet, scribing visible.  
 A 34" B. Oak bears S04°25'E, 104.7 feet, scribing visible.  
 A 29" P. Pine snag bears N13°55'W, 34.0 feet, scribing visible.
- New Bearing Trees Marked
- A 19" D. Fir bears S07°50'E, 61.6 feet, scribed T41S R3W S14 BT  
 A 10" D. Fir bears S66°00'W, 47.5 feet, scribed T41S R3W S15 BT  
 An 8" D. Fir bears N55°20'W, 25.0 feet, scribed T41S R3W S10 BT
13. 

1/4	S10
	S15

  
1915
- Found a 2 1/2" G.L.O. brass cap on a 1" iron post in a mound of rocks, projecting 10" above the ground, under the debris from a windfall. Repeated fires in the area apparently has destroyed all traces of the original bearing trees.
- New Bearing Trees Marked
- A 17" D. Fir bears N14°15'E, 61.6 feet, scribed 1/4 S10 BT  
 A 12" D. Fir bears S69°40'E, 100.5 feet, scribed 1/4 S15 BT
14. 

T41S	R3W
S9	S10
S16	S15

  
1915
- Found a 2 1/2" G.L.O. brass cap on a 1 3/4" iron post in a mound of rock, projecting 18" above the ground.
- Bearing Trees Found
- A 36" P. Pine windfall, the root hole bears N11°15'E, 17.0 feet, scribing visible.  
 A 20" Oak windfall, the root hole bears S20°20'E, 73.4 feet, scribing visible.  
 A 35" Oak windfall, the root hole bears S23°25'W, 75.3 feet, scribing visible.  
 A 35" Oak bears N52°25'W, 54.6 feet, blazed and healed.

2. T41S R3W  
ORE | GON  
S14 | S13  
C | C  
CALIFORNIA  
1915
- Found a 3 1/2" G.L.O. brass cap on a 2 1/2" iron post in a mound of rocks, projecting 14" above the ground.
- Bearing Trees Found  
A 40" B. Oak bears N17°25'E, 112.0 feet, blazed and healed.  
A 26" B. Oak bears N47°35'W, 60.9 feet, blazed and healed.
3. 42L OREGON 153M  
CALIFORNIA 1915
- Found a 3 1/2" G.L.O. brass cap on a 2 1/2" iron post in a mound of rock, projecting 14" above the ground.
- Bearing Trees Found  
A 40" P. Pine bears S63°30'E, 136.6 feet, scribing visible.  
A 41" D. Fir bears S58°30'E, 50.8 feet, blazed and healed.  
A 58" P. Pine bears S44°40'W, 135.8 feet, scribing visible.  
A 10" B. Oak bears N38°10'W, 11.1 feet, scribing visible (1981).
4. T41S R3W  
ORE | GON  
S15 | S14  
C | C  
CALIFORNIA  
1915
- Found a 3 1/2" G.L.O. brass cap on a 2 1/2" iron post in a mound of rock, projecting 15" above the ground.
- Bearing Trees Found  
A 9" B. Oak bears N44°15'E, 36.2 feet, rotten face.
- New Bearing Trees Marked  
A 13" D. Fir bears N37°15'E, 18.1 feet, scribed T41S R3W S14 CC BT  
A 12" D. Fir bears N73°30'W, 28.9 feet, scribed T41S R3W S15 CC BT
5. 42L OREGON 154M  
CALIFORNIA 1915
- Found a 3 1/2" G.L.O. brass cap on a 2 1/2" iron post in a mound of rocks, projecting 8" above the ground. The original 1868 mile corner position is West 6.60 feet (10 links) at the remains of a 43" D. Fir rotten stump.
- Bearing Trees Found  
A 36" D. Fir bears N25°15'E, 14.5 feet, blazed and healed.  
A 26" B. Oak bears N79°50'E, 79.6 feet, blazed and healed.  
A 21" B. Oak bears S80°10'W, 79.6 feet, blazed and healed.  
A 30" D. Fir bears N78°30'W, 65.0 feet, blazed and healed.  
A 35" D. Fir bears N71°10'W, 60.9 feet, blazed and healed.  
A 21" D. Fir bears N70°10'W, 51.8 feet, blazed and healed.  
A 37" D. Fir bears N63°05'W, 40.2 feet, blazed and healed.  
A 12" I. Cedar bears N19°20'W, 36.9 feet, blazed and healed.  
A 5' x 5' x 2' mound of rock bears East 6.60 feet.
6. T41S R3W  
ORE | GON  
S16 | S15  
WCC  
CALIFORNIA  
1915
- Found a 3 1/2" G.L.O. brass cap on a 2 1/2" iron post in a mound of rock, projecting 15" above the ground.
- Bearing Trees Found  
A 10" Oak bears S81°20'E, 17.0 feet, blazed and healed.  
An 18" Oak bears N10°15'W, 25.5 feet, blazed and healed.  
A 6' high rock bears West 2 feet.
7. 42L OREGON 155M  
CALIFORNIA 1915
- Found a 3 1/2" G.L.O. brass cap on a 2 1/2" iron post in a mound of rocks projecting 10" above the ground. The original mile corner is West 6.60 feet (10 links).
- An 11" P. Pine bears N43°25'E, 52.6 feet, scribing visible.  
A 27" P. Pine bears S44°35'E, 19.8 feet, blazed and healed.  
A 12" B. Oak bears S32°25'E, 8.9 feet, blazed and healed.  
A 46" S. Pine bears S19°45'W, 76.8 feet, blazed and healed.  
An 18" B. Oak bears S77°20'W, 51.0 feet, blazed and healed.  
(Twin B. Oak, BT is South fork of twin.)
8. T41S R3W  
ORE | GON  
S17 | S16  
C | C  
CALIFORNIA  
1915
- Found a 3 1/2" G.L.O. brass cap on a 2 1/2" iron post in a mound of rock, projecting 18" above the ground.
- Bearing Trees Found  
A 19" B. Oak bears N37°00'E, 51.5 feet, blazed and healed.
- New Bearing Tree Marked  
A 38" P. Pine bears N72°10'W, 35.4 feet, scribed T41S R3W S17 CC BT

SURVEY NARRATIVE  
ORS 209.250

Survey for: U. S. Forest Service  
Rogue River National Forest  
1319 East McAndrews Road  
Medford, Oregon 97501  
Contract No. 53-04HI-2-8796N

Survey by: Chickering-Green Empire, Inc.  
360 S. E. "H" St.  
Grants Pass, Oregon 97526  
(Malcolm N. Clark: R.P.L.S. 601 OR and 4940 CA)

Location: Sections 10, 11, 14, 15 and 16, Township 41 South, Range 3 West, Willamette Meridian, Oregon, and from mile corner 152 to mile corner 156 of the Oregon-California State Line.

Date: October 31, 1982

Equipment: Wild T-16 and DI-4 Distomat

Purpose: To mark certain property lines between the U. S. Forest Service and private lands and to subdivide as shown Sections 10 and 11, Township 41 South, Range 3 West, Willamette Meridian, Oregon.

Bearing Base: Solar observation taken 400 feet East of the Southwest corner of Section 16, Township 41 South, Range 3 West, Willamette Meridian.

Procedure: Random closed traverses were run in the approximate locations of the property lines to be marked and to all controlling corners. Offsets from the random line to the true line were made and the lines were posted with 6 foot aluminum post with U. S. Forest Service boundary signs, trees were blazed within 3 feet of the true line and the blazes painted red. All corners set are 2 1/2" outside diameter pipe, 30" long with a flared split flange at the bottom, with a 2 1/2" diameter brass cap marked as shown. Points of intersection at closing corners were monumented with a 5/8" iron pin with a red plastic cap marked LS 601, as noted on the map. All BT's have either a Land Survey Monument or an Attention sign on the back, BT tags, and a 6" red band of paint. New BT's marked also have a 3/4" brass washer marked RLS 601 on the lower blaze. There is a 6' aluminum post with a Land Survey Monument or an Attention sign at each corner location.

Corners found or set in this survey:

1. Found a 3 1/2" G.L.O. brass cap on a 2 1/2" iron post, in a mound of rocks, projecting 14" above the ground. The original 1868 mile corner is West 7.92 feet (12 links).

42L  
 OREGON  
 CALIFORNIA  
 1915
 

 152M

Bearing Trees Found

- A 69" P. Pine bears N44°50'E, 228.4 feet, blazed and healed.
- A 75" P. Pine bears N47°55'E, 97.5 feet, blazed and healed.
- A 84" P. Pine bears N89°15'E, 199.7 feet, blazed and healed.
- A 51" P. Pine bears S08°35'W, 119.4 feet, scribing visible.
- A 38" P. Pine bears S17°00'W, 90.2 feet, scribing visible.
- A 36" P. Pine bears S21°15'W, 90.6 feet, scribing visible.
- A 36" P. Pine bears S33°45'W, 83.4 feet, scribing visible.
- A 40" P. Pine bears S34°10'W, 95.1 feet, scribing visible.
- A 42" P. Pine bears S46°50'W, 95.9 feet, blazed and healed.
- A 26" P. Pine bears S48°30'W, 90.8 feet, scribing visible.
- A 51" P. Pine bears S53°40'W, 109.8 feet, blazed and healed.
- A 37" P. Pine bears S56°05'W, 83.4 feet, blazed and healed.
- A 31" P. Pine bears S72°30'W, 132.8 feet, scribing visible.
- A 52" P. Pine bears S75°33'W, 129.1 feet, blazed and healed.
- A 59" P. Pine bears N84°55'W, 112.3 feet, blazed and healed.