

# RECORD OF SURVEY FOR ROGUE RIVER NATIONAL FOREST

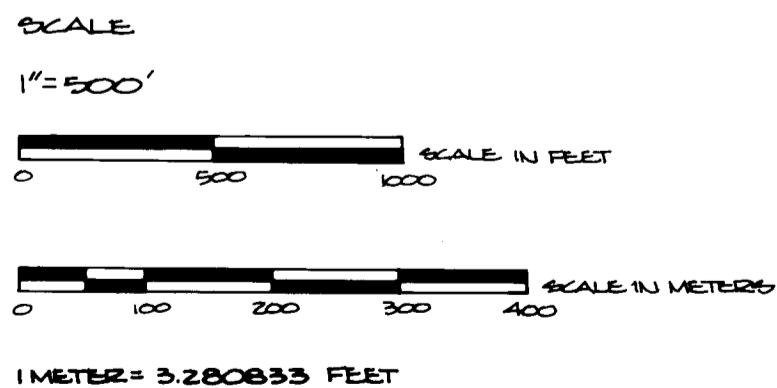
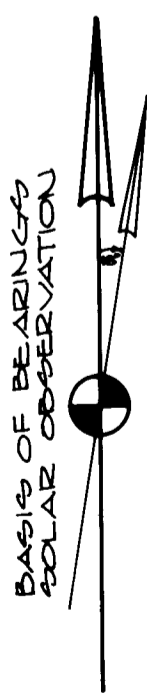
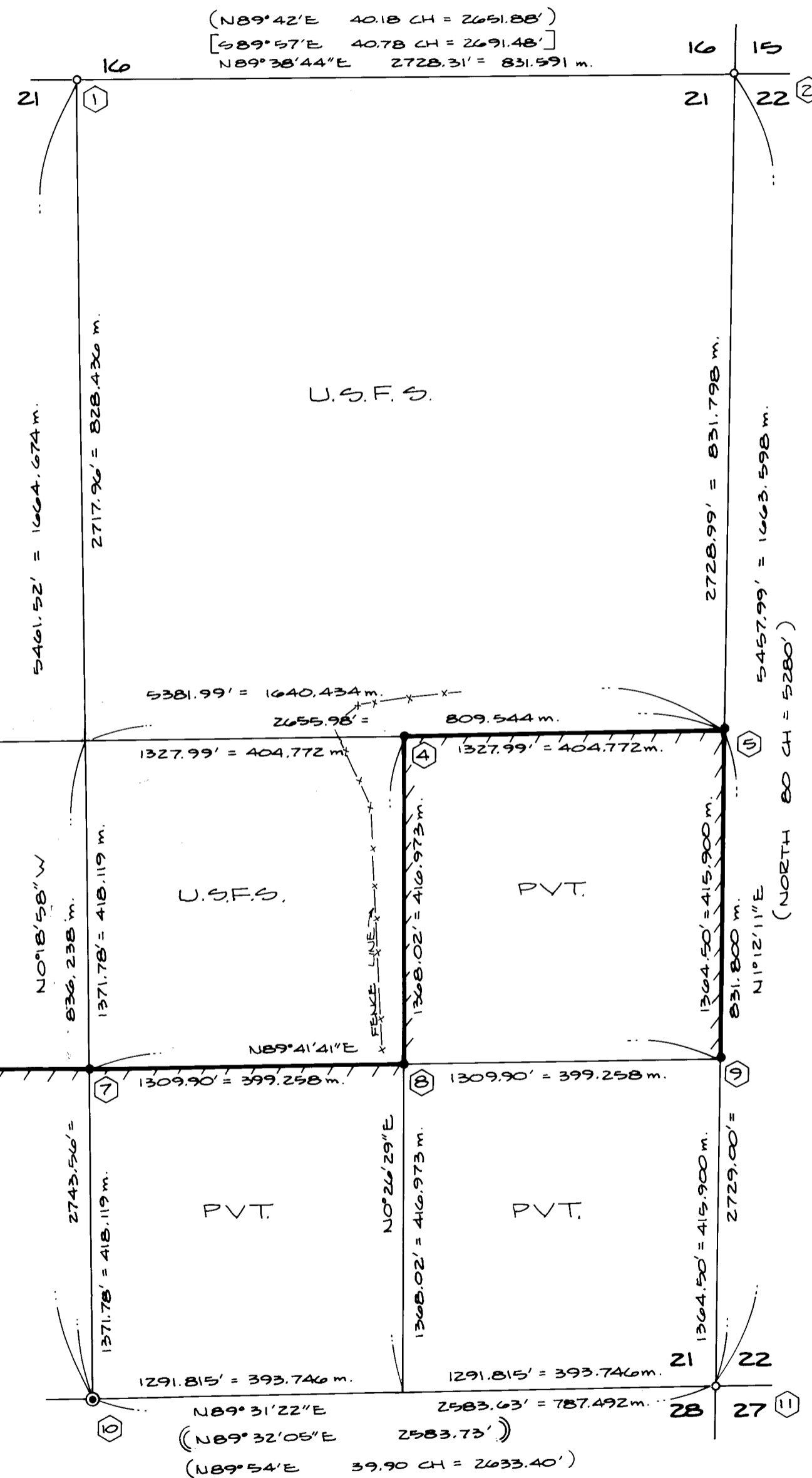
P.O. BOX 520  
MEDFORD, OREGON 97501

LOCATED IN  
SECTION 21, T40S, R4W, W.M.  
JACKSON COUNTY, OREGON

OCTOBER 29, 1982

**LEGEND:**

- FOUND BLM, G.L.O. OR U.S.F.S. MONUMENT (SEE NARRATIVE)
  - ⊙ FOUND COUNTY SURVEYOR'S BRASS CAP
  - SET 2 1/2" x 30" GALVANIZED IRON PIPE WITH 2 1/2" BRASS CAP
  - SECTION LINE CALCULATED FROM TRAVERSE SURVEY
  - ////// PROPERTY LINE ESTABLISHED AND POSTED THIS SURVEY
  - ( ) RECORD MEASUREMENTS PER G.L.O. PLAT, 1882, CONTRACT NO. 429
  - ( ( ) RECORD MEASUREMENTS PER H. LEON KENNEDY - FOREST SERVICE CONTRACT NO. 53-04HI-0-7885N
  - [ ] RECORD MEASUREMENTS PER G.L.O. PLAT, 1917.
  - [ ] RECORD MEASUREMENTS PER CONTRACT NO. 53-04HI-1-8399N BY DARREL W. EDWARDS
  - x - x - FENCE LINE
- FIELD BOOKS NO. 1 THROUGH 6 ON FILE WITH AA SURVEYING SERVICE, INC.



**CERTIFICATE OF SURVEYOR**

I, DAVID J. STRINGER, REGISTERED LAND SURVEYOR IN THE STATE OF OREGON, HEREBY CERTIFY THAT THIS PLAT AND THE NOTES HEREON ARE A CORRECT REPRESENTATION OF A SURVEY I PERFORMED DURING JULY 1982 THROUGH OCTOBER 1982, FOR THE U.S. FOREST SERVICE, IN ACCORDANCE WITH THE STATUTES OF THE STATE OF OREGON AND WITH THE ARTICLES OF MY CONTRACT.

**HISTORY OF SURVEYS**

THE EXTERIOR BOUNDARY AND THE SUBDIVISION LINES OF TOWNSHIP 40 SOUTH, RANGE 4 WEST, WILLAMETTE MERIDIAN WERE SURVEYED BY SAMUEL LACKLAND UNDER G.L.O. CONTRACT NO. 429, JANUARY 5, 1882.

THE NORTH LINE OF SECTION 21 WAS RESURVEYED BY FRED W. RODOLF UNDER GROUP NO. 31, AUGUST 19, 1916.

A REMONUMENTATION SURVEY BY ROLLIN D. AARLUD, CADASTRAL SURVEYOR, UNDER BLM GROUP NO. 350, MAY 3, 1957.

THE WEST LINE WAS SURVEYED BY DARREL W. EDWARDS UNDER FOREST SERVICE CONTRACT NO. 53-04HI-1-8399N, SEPTEMBER 4, 1981.

THE SOUTH LINE WAS SURVEYED BY H. LEON KENNEDY UNDER FOREST SERVICE CONTRACT NO. 53-04HI-0-7885N, AUGUST, 1980.

THE MONUMENTS FOUND ARE AS NOTED PER THE ATTACHED NARRATIVE AND MADE A PART OF THIS SURVEY.

REGISTERED PROFESSIONAL LAND SURVEYOR  
*David J. Stringer*  
OREGON JULY 17, 1981  
DAVID J. STRINGER #1956

**\*\* RECEIVED \*\***  
Date 11/15/82 By SK  
This survey consists of:  
2 sheet(s) Map  
13 page(s) Narrative  
JACKSON COUNTY SURVEYOR

EXAMINED AND ACCEPTED FOR THE U.S. FOREST SERVICE THIS 240 DAY OF November, 1982.  
*Harold [Signature]*  
CONTRACTING OFFICER'S REPRESENTATIVE

A 13" Live Oak bears South 24.5 ft; blazed & scribed "1/4 S23, BT"

A 14" Live Oak bears N79°E 10.0 ft; blazed & scribed "1/4 S14, BT"

Each tree has a brass washer marked "RLS 1956" nailed to its lower blaze

- 21. 1/4 Corner common to Sections 15 and 22, Township 40 South, Range 4 West, Willamette Meridian. At the corner location, I set a 2½"x30" galvanized steel pipe 6" into the ground and constructed a large mound of stones around the pipe. I marked the attached 2-1/2" brass cap:

T40S R4W  
 1/4 ~~S15~~  
           S22  
 1982  
 RLS 1956

from which I marked the following bearing trees:

A 10" Live Oak bears N20°07'E 62.0 ft; blazed & scribed "1/4 S15, BT"

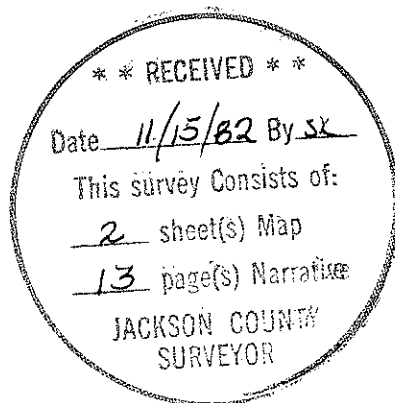
A 9" Live Oak bears S89°00'E 64.7 ft; blazed & scribed "1/4 S22, BT"

Both BT's are on spur ridge. Each tree has a brass washer marked "RLS 1956" nailed to its lower blaze

October 29, 1982

AA Surveying Service, Inc.  
 P.O. Box 130  
 Roseburg, OR 97470

David J. Stringer  
 Registered Land Surveyor  
 Oregon Certificate No. 1956



16. 1/4 Corner common to Sections 22 and 23, Township 40 South, Range 4 West, Willamette Meridian. At the corner location, I set a 2½"x30" galvanized steel pipe 28" into the ground and built a mound of stones around it. I marked the attached 2-1/2" brass cap:

T40S R4W  
 1/4  
~~S22~~ | ~~S23~~  
 1982  
 RLS 1956

from which I marked the following bearing trees:

An 11" Live Oak bears S01°E 14.6 ft; blazed & scribed "1/4 S23, BT"

A 9-1/2" D. Fir bears N12°W 45.4 ft; blazed & scribed "1/4 S22, BT"

Each tree has a brass washer marked "RLS 1956" nailed to its lower blaze

17. Section Corner common to Sections 14, 15, 22 and 23, Township 40 South, Range 4 West, Willamette Meridian. At the corner location, I set a 2½" x 30" galvanized steel pipe 25" into the ground and constructed a mound of stones around it. I marked the attached 2-1/2" brass cap:

T40S R4W  
~~S15~~ | ~~S14~~  
~~S22~~ | ~~S23~~  
 1982  
 RLS 1956

from which I marked the following bearing trees:

A 9" D. Fir bears N19°20'E 65.0 ft; blazed & scribed "T40S R4W S14 BT"

A 15-1/2" Pine bears S41°23'E 59.6 ft; blazed & scribed "T40S R4W S23, BT"

A 10" Pine bears S12°49'W 15.4 ft; blazed & scribed "T40S R4W S22, BT"

A 4" Live Oak bears N73°01'W 48.6 ft; bark scribed "x" at chest height, blazed & scribed "BT" at base

Each tree has a brass washer marked "RLS 1956" nailed to its lower blaze

18. 1/4 Corner common to Sections 14 and 23, Township 40 South, Range 4 West, Willamette Meridian. At the corner location, I set a 2½" x 30" galvanized steel pipe 10" into rock and constructed a mound of stones around it. I marked the attached 2-1/2" brass cap"

T40S R4W  
 1/4 ~~S14~~  
~~S23~~  
 1982  
 RLS 1956

from which I marked the following bearing trees:

CORNERS ESTABLISHED ON THIS SURVEY FOR SECTION 22

5. 1/4 Corner common to Sections 21 and 22, Township 40 South, Range 4 West, Willamette Meridian. At the corner location I set a 2½"x30" galvanized steel pipe 25" into the ground (bedrock) and constructed a mound of stones around it. I marked the attached 2-1/2" brass cap:

T40S R4W  
 1/4  
 S21 | S22  
 1982  
 PLS 1956

from which I marked the following bearing trees:

A 17-1/2" D. Fir bears N30°59'W 62.0 ft; blazed & scribed "1/4 S21, BT"

A 12" Live Oak bears S55°21'E 60.0 ft; blazed & scribed "1/4 S22, BT"

Each tree has a brass washer marked "RLS 1956" nailed to its lower blaze

9. South 1/16 Corner common to Sections 21 and 22, Township 40 South, Range 4 West, Willamette Meridian. At the corner location, I set a 2½" x 30" galvanized steel pipe 27" into the ground. I marked the attached 2-1/2" brass cap:

T40S R4W  
 S 1/16  
 S21 | S22  
 1982  
 PLS 1956

from which I marked the following bearing trees:

An 11-1/4" Pine bears N75°38'W 24.9 ft; blazed & scribed "S1/16 S21, BT"

A 14" Pine bears S22°17'E 25.3 ft; blazed & scribed "S 1/16 S22, BT"

Each tree has a brass washer marked "RLS 1956" nailed to its lower blaze

15. Southwest 1/16 Corner of Section 22, Township 40 South, Range 4 West, Willamette Meridian. At the corner location, I set a 2½"x30" galvanized steel pipe 26" into the ground and marked the attached 2-1/2" brass cap:

T40S R4W  
 SW 1/16 S22  
 1982  
 RLS 1956

from which I marked the following bearing trees:

A 20" D. Fir bears N68°W 20.7 ft; blazed & scribed "SW 1/16 S22, BT"

A 14-1/2" D. Fir bears N60°E 27.9 ft; blazed & scribed "SW 1/16 S22, BT"

Each tree has a brass washer marked "RLS 1956" nailed to its lower blaze

19. Section Corner common to Sections 13, 14, 23 and 24, Township 40 South, Range 4 West, Willamette Meridian. At the corner location, I found a 2" galvanized steel pipe set in a mound of stones with a 2-1/2" brass cap marked:

T40S R4W  
14|13  
23|24  
C.S.  
1982

from which I found the following bearing trees:

- A 5-1/2" Fir snag bears S22°06'E 33.7 ft; shows "40S R4W S24 BT"
- A 41" D. Fir bears N41°07'E 12.0 ft; shows "CS, BT"
- An 11-1/2" Live Oak bears N33° 19'W 11.0 ft; shows "CS, BT"
- A 10" Live Oak bears S59°00'W 19.8 ft; shows "CS, BT"
- A 10-1/2" Live Oak bears S35°42'E 33.5 ft; shows "CS, BT"

20. 1/4 Corner common to Sections 14 and 15, Township 40 South, Range 4 West, Willamette Meridian. At the corner location, I found a 2" iron pipe with a 2-1/2" brass cap marked:

T40S R4W  
1/4 S  
15|14  
CS  
1982

from which I found the following bearing trees:

- A 9" Madrone bears N70°28'E 6.5 ft; scribing visible but not legible
- A 26" D. Fir bears S34°44'W 99.1 ft; shows good scar
- A 13" D. Fir bears N64°44'E 19.6 ft; shows scribing "CS, BT"
- A 9-1/2" D. Fir bears S26°59'W 10.7 ft; shows scribing "CS, BT"

12. West 1/16 corner common to Sections 22 and 27, Township 40 South, Range 4 West, Willamette Meridian. At the corner location, I found a 2½" iron pipe with a 2-1/2" brass cap set in a large mound of stones. The cap is marked:

T40S R4W  
W 1/16 ~~S22~~  
S27  
1980  
RLS 981

from which I found the following bearing trees:

A 7" Pine bears N80°54'E 10.3 ft; blazed & scribed "W 1/16 S22, BT"

A 10-1/2" Live Oak bears S83°38'W 16.0 ft; blazed & scribed "W 1/16 S27, BT"

Each tree has a brass washer marked "LS 981" nailed to its lower blaze

13. 1/4 Corner common to Sections 22 and 27, Township 40 South, Range 4 West, Willamette Meridian. At the corner location, I found a 1" iron pipe in a mound of stones with a 2-1/2" brass cap marked:

T40S R4W  
1/4 ~~22~~ Cor  
27  
CS  
1968

from which I found the following bearing trees:

A 6" White Oak bears N28°30'W 10.1 ft; shows well healed faces

A 4" White Oak bears N58°21'E 12.7 ft; shows "CS, BT"

14. Southeast Corner Section 22, Township 40 South, Range 4 West, Willamette Meridian. At the corner location, I found a 2" iron pipe in a large mound of stones, with a 3" brass cap marked:

U.S. DEPT. OF THE INTERIOR  
UNLAWFUL TO DISTURB  
T40S R4W  
~~S22 | S23~~  
~~S27 | S26~~  
1966  
CADASTRAL SURVEY  
BUREAU OF LAND MANAGEMENT

from which I found the following bearing trees:

A 30" remains of broken off Fir bears S73°W 57.3 ft

A 14" D. Fir bears S57°W 26.9 ft; shows good scar

A 12" W. Fir bears S78°E 36.1 ft; shows good scar

A 14" D. Fir bears N62°W 23.0 ft; shows good scar

A 20" D. Fir bears N44°W 55.1 ft; shows good scar

A 16" D. Fir bears N45°E 29.7 ft; shows good scar

A 14" Pine bears S22°17'E 25.3 ft; blazed & scribed S 1/16 S22, BT"

Each tree has a brass washer marked "RLS 1956" nailed to its lower blaze

CORNERS ACCEPTED FOR CONTROL SECTION 22

2. Section Corner common to Sections 15, 16, 21 and 22, Township 40 South, Range 4 West, Willamette Meridian. At the corner location, I found a 1-1/2" iron pipe set in a large mound of stones with a 2-1/2" brass cap marked:

U.S. GENERAL LAND OFFICE SURVEY  
Penalty \$250 for Removal  
T40S R4W  
~~S16~~ | ~~S15~~  
~~S21~~ | ~~S22~~  
1917

from which I found the following bearing trees:

A 4-1/2" Live Oak bears S12°27'E 13.9 ft; shows good scar

A 5" Madrone bears S26°34'W 9.1 ft; shows good scar

A 6-1/2" Live Oak bears N45°46'W 20.0 ft; shows good scar

New bearing trees marked:

An 18" D. Fir bears S80°13'E 43.0 ft; shows bark scribed "BT"  
I blazed & scribed lower "T40S R4W S22, BT" and nailed a brass washer marked "RLS 1956" to the lower blaze

11. Section corner common to Sections 21, 22, 27 and 28, Township 40 South, Range 4 West, Willamette Meridian. At the corner location I found a 2" iron pipe with a 3-1/8" brass cap marked:

U.S. DEPT. OF THE INTERIOR  
Unlawful to Disturb  
T40S R4W  
~~S21~~ | ~~S22~~  
~~S28~~ | ~~S27~~  
1966  
Cadastral Survey  
BUREAU OF LAND MANAGEMENT

from which I found the following bearing trees:

A 10" D. Fir bears N62°31'W 42.5 ft; shows "CS, BT"

A 12" D. Fir stump bears N39°52'W 22.9 ft; shows no face or scribing

A 24" Pine stump bears N20°20'E 45.0 ft; shows "S2"

A 21" D. Fir bears N30°21'E 78.4 ft; shows good scar

A 22" Ponderosa Pine bears S36°22'E 196.0 ft; shows "CS, BT"

A 16" D. Fir bears S27°59'W 50.5 ft; shows good scar

A 30" Pine stump bears N23°16'W 76.9 ft; badly decomposed

7. CS 1/16 Corner section 21, Township 40 South, Range 4 West, Willamette Meridian. At the corner location I set a 2½"x30" galvanized steel pipe 24" into the ground and built a mound of stones around it. I marked the attached 2-1/2" brass cap:

T40S R4W  
 C  
 S 1/16 S21  
 C  
 RLS 1956  
 1982

from which I marked the following bearing trees:

A 16-1/2" D. Fir bears N44°58'W 44.9 ft; blazed & scribed "CS 1/16 S21, BT"

A 7" Live Oak bears N55°25'E 8.6 ft; blazed & scribed "CS 1/16 S21, BT"

Each tree has a brass washer marked "RLS 1956" nailed to its lower blaze

8. SE 1/16 Corner of Section 21, Township 40 South, Range 4 West, Willamette Meridian. At the corner location, I set a 2½"x30" galvanized steel pipe 24" into the ground and constructed a mound of stones around it. I marked the attached 2-1/2" brass cap:

T40S R4W  
 SE 1/16 S21  
 1982  
 RLS 1956

from which I marked the following bearing trees:

A 20-1/2" D. Fir bears N06°40'W 6.5 ft; blazed & scribed "SE 1/16 S21, BT"

A 6" White Oak bears S72°08'E 19.7 ft; blazed & scribed "SE 1/16 S21, BT"

Each tree has a brass washer marked "RLS 1956" nailed to its lower blaze

9. S 1/16 Corner common to Sections 21 and 22, Township 40 South, Range 4 West, Willamette Meridian. At the corner location, I set a 2½"x30" galvanized steel pipe 27" into the ground. I marked the attached 2-1/2" brass cap:

T40S R4W  
 S 1/16  
 S21 S22  
 1982  
 RLS 1956

from which I marked the following bearing trees:

An 11-1/4" Pine bears N75°38'W 24.9 ft; blazed & scribed "S 1/16 S21, BT"



from which I found the following bearing trees:

- A 10" D. Fir bears N62°31'W 42.5 ft; shows "CS, BT"
- A 12" D. Fir stump bears N39°52'W 22.9 ft; shows no face or scribing
- A 24" Pine stump bears N20°20'E 45.0 ft; shows "S2"
- A 21" D. Fir bears N30°21'E 78.4 ft; shows good scar
- A 22" Ponderosa Pine bears S36°22'E 196.0 ft (shows "CS, BT")
- A 16" D. Fir bears S27°59'W 50.5 ft; shows good scar
- A 30" Pine stump bears N23°16'W 76.9 ft; badly decomposed

CORNERS ESTABLISHED ON THIS SURVEY FOR SECTION 21

4. CE 1/16 Corner of Section 21, Township 40 South, Range 4 West, Willamette Meridian. At the corner location I set a 2½"x30" galvanized steel pipe 26" into the ground and constructed a mound of stones around it. I marked the attached 2-1/2" brass cap:

T40S R4W  
S21  
C---C  
E 1/16  
RLS 1956  
1982

from which I marked the following bearing trees:

- A 25-1/2" Ash bears N01°27'W 13.7 ft; blazed & scribed "CE 1/16 S21, BT"
- A 23" Ponderosa Pine bears N58°57'E 120.3 ft; blazed & scribed "CE 1/16 S21, BT"

Each tree has a brass washer marked "RLS 1956" nailed to its lower blaze

5. 1/4 Corner common to Sections 21 and 22, Township 40 South, Range 4 West, Willamette Meridian. At the corner location I set a 2½" x 30" galvanized steel pipe 25" into the ground (bedrock) and constructed a mound of stones around it. I marked the attached 2-1/2" brass cap:

T40S R4W  
1/4  
S21|S22  
1982  
RLS 1956

from which I marked the following bearing trees:

- A 17-1/2" D. Fir bears N30°59'W 62.0 ft; blazed & scribed "1/4 S21, BT"
  - A 12" Live Oak bears S55°21'E 60.0 ft; blazed & scribed "1/4 S22, BT"
- Each tree has a brass washer marked "RLS 1956" nailed to its lower blaze

- A 48" D. Fir bears N55°30'W 43.3 ft; shows good scars
- A 20" D. Fir bears N02°10'W 118.8 ft; shows good scars
- A 6" White Oak bears N51°54'W 12.8 ft; shows "1/4 S20, BT"
- A 5" White Oak bears N57°32'E 7.8 ft; shows "1/4 S21, BT"

6. South 1/16 Corner common to Sections 20 and 21, Township 40 South, Range 4 West, Willamette Meridian. At the corner location, I found a 2½" x 30" galvanized steel pipe set firmly into the ground with a 2-1/2" brass cap marked:

T40S R4W  
S 1/16  
S20 | S21  
1981  
LS 741

from which I found the following bearing trees:

- An 8" D. Fir bears N08°W 58.7 ft; blazed & scribed "S 1/16 S20, BT"
  - A 12" D. Fir bears N40°E 20.0 ft; blazed & scribed "S 1/16 S21, BT"
- Each tree has a brass washer marked "LS 741" tacked to its lower blaze

New bearing tree marked:

- A 24" D. Fir bears N29½°W 107.5 ft; blazed & scribed "S 1/16 S20, BT" with a brass washer marked "RLS 1956" nailed to its lower blaze

10. 1/4 Corner common to Sections 21 and 28, Township 40 South, Range 4 West, Willamette Meridian. At the corner location I found a 1" iron pipe with a 2-1/2" brass cap marked:

JACKSON COUNTY  
1/4 S ~~21~~/<sub>28</sub>  
1980

I also found a 4" x 10" x 14" stone with "1/4" next to pipe.

from which I found the following bearing trees:

- A 36"± Very rotten fir stump bears S30°W 16.5 ft; no scribing
- A 13" D. Fir bears S22°25'W 5.6 ft; scribed "CS, BT"
- A 15" D. Fir bears N68°08'W 12.4 ft; scribed "CS, BT"

11. The section corner common to Sections 21, 22, 27, and 28, Township 40 South, Range 4 West, Willamette Meridian. At the corner location I found a 2" iron pipe with a 3-1/8" brass cap marked:

U.S. DEPT. OF THE INTERIOR  
Unlawful to Disturb  
T40S R4W  
S21 | S22  
S28 | S27  
1966  
Cadastral Survey  
BUREAU OF LAND MANAGEMENT

CONCLUSION: I find that I can make no sense from the topographic calls without making too many assumptions. I find that I have no alternative but to use the double proportion method for the NE corner of Section 22.

CORNERS ACCEPTED FOR CONTROL SECTION 21

- 1/4 Corner Section 16 and Section 21, Township 40 South, Range 4 West, Willamette Meridian. At that corner I found a 3/4" iron pipe with a 2-1/2" brass cap marked:

U.S. GENERAL LAND OFFICE SURVEY  
 Penalty \$250 for Removal  
 1/4  $\frac{S16}{S21}$   
 1917

from which I marked the following bearing trees:

A 12" Pine bears N24°04'E 29.1 ft; blazed & scribed "1/4 S16, BT"

A 9" Pine bears S26°17'E 7.5 ft; blazed & scribed "1/4 S21, BT"

Each tree has a brass washer marked "RLS 1956"

- Section corner common to Section 15, 16, 21, & 22, Township 40 South, Range 4 West, Willamette Meridian. At the corner location, I found a 1-1/2" iron pipe set in a large mound of stones with a 2-1/2" brass cap marked:

U.S. GENERAL LAND OFFICE SURVEY  
 Penalty \$250 for Removal  
 T40S R4W  
 $\frac{S16 | S15}{S21 | S22}$   
 1917

from which I found the following bearing trees:

A 4-1/2" Live Oak bears S12°27'E 13.9 ft; shows good scar

A 5" Madrone bears S26°34'W 9.1 ft; shows good scar

A 6-1/2" Live Oak bears N45°46'W 20.0 ft; shows good scar

New bearing trees marked:

An 18" D. Fir bears S80°13'E 43.0 ft; shows bark scribed "BT"  
 I blazed & scribed lower "T40S R4W S22, BT" and nailed a brass washer marked "RLS 1956" to the lower blaze

- 1/4 Corner common to Sections 20 and 21, Township 40 South, Range 4 West, Willamette Meridian. At the corner location I found a 2" galvanized steel pipe with a 2-1/2" brass cap marked:

T40S R4W  
 1/4  
 $\frac{S20 | S21}{S21 | S22}$   
 1981  
 LS 741

from which a 1-3/4" iron pipe with a mushroomed top bears S71°W 1.27 ft.

Also from which I found the following bearing trees:

North along east line of Section 15

Record 6 chains	Top of ridge
Measured 6 chains	Top of ridge
Record 7.77 chains	Trail
Measured 15 chains	Trail
Measured 34 chains	Ridge
Record 40.75 chains	1/4 Corner
Measured 41.74 chains	1/4 Corner

Rodolf found Lackland's section corners (NW of Sec 21, NE of Sec 21, NE of Sec 22), but did not find his quarter corners.

The ground:

The terrain is very steep in places with rock outcroppings. The cover along most of the north lines of Sections 21 and 22 and east lines of Sections 22 and 15 is dense brush (manzanita, buck brush, madrone, etc.) and the ground along all lines is very rocky. Much of the north line of Section 23 has heavy timber.

POSSIBLE INTER-  
PRETATIONS:

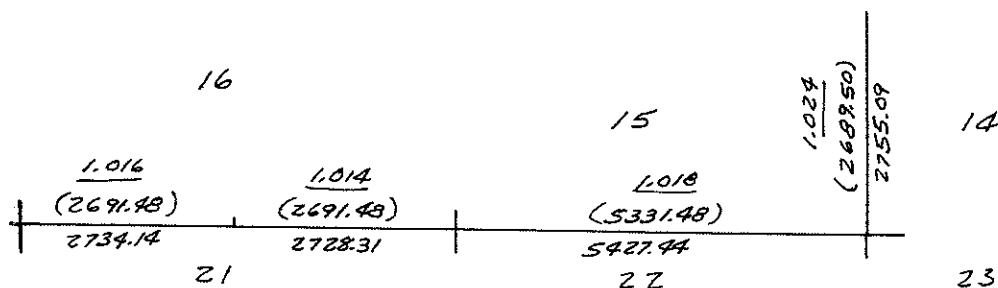
Theory No. 1: Lackland made a 5 chain error in the line between Sections 22 and 23. Therefore, his section corner is on the ridge approximately 5 chains north from the proportioned position. This theory has a lot going for it, especially if one assumes that Lackland stubbed in his quarter corners on the E-W lines (did not measure the full mile) which is quite possible on this rough and brushy ground. It would account for error in the draw call at 48 chains between Sections 15 and 22 (assuming he did not run that half mile). It would make his call to the draw at 21.40 chains on the line between Sections 14 and 23 fit. It would put the NE corner of Section 22 on top of the ridge and possibly explain the reason Lackland did not call that ridge. Rodolf's survey negates this theory. He found Lackland's section corner and verified its position. It is unlikely that both surveys are wrong. Lackland's call to a ridge at 19.75 chains between Sections 14 and 15 would still be off by approximately 10 chains. It is more likely that Lackland kept separate running notes and topographic calls, and that his topographic calls are in error.

Theory No. 2: Rodolf's quarter corner between Sections 15 and 22 is on the east side of the spur ridge, as he called, instead of the west side as the proportioned position falls. The notes seem to be explicit here. As he proceeds east, the spur ridge is at 39.00 chains and the corner is at 40.39 chains. But his other topographic calls do not fit either (see page 2 of this narrative, tabulation of record and measured calls). This call is not supported by other evidence.

Theory No. 3: There is a large bearing difference between the east line of Section 22 (N01°01'33"E) and the east line of Section 15 (N02°14'58"W). Therefore, the NE corner of Section 22 must be farther west. Again, there is no supporting evidence. Both Rodolf's and Lackland's topographic calls tend to move this section corner easterly. The bearing along the west line of Section 22 (N01°12'11"E) is parallel with, and therefore tends to support, the bearing of the easterly line.

Lackland's topography calls do not match with the existing ground in the area of concern (calls along E-W lines are on random lines) along the line between Sections 22 and 23. He called a ridge at 31.25 chains and a ravine at 52.12 chains. I find these features to be approximately 5 chains farther north than he called (36 chains and 57 chains respectively). On the line between Sections 23 and 24 is a similar occurrence. Lackland called a ridge at 77.50 chains and the corner at 80.00 chains. The ridge is at least 5 chains south from the corner. On the line between Sections 15 and 22, he called a ravine at 48 chains which I find at approximately 58 chains.

Fred W. Rodolf surveyed the north line of Sections 21 and 22 and the line between Sections 14 and 15, in 1917. He used a solar transit and a steel tape. The only line of his which I retraced between existing monuments is the line between Sections 16 and 21. A sketch of this line is shown below with Rodolf's distance shown in parentheses. A scale factor from Rodolf's measurement to my measurement is underlined. The north line of Section 22 is shown for comparison of proportioned distances.



Rodolf's calls to topographic features are close along the north line of Section 21, allowing for scale factor. Along the north line of Section 22 and the east line of Section 15 there are large discrepancies. I have arranged the listing below to show these.

East along north line of Section 22

Record 25 chains	Top of ridge
Measured 19± chains	Top of ridge
Record 32 chains	Draw (very rounded, not tied)
Record 39 chains	Ridge
Record 40 chains	1/4 Corner
Measured 41 chains	1/4 Corner (proportioned)
Measured 42 chains	Ridge
Record 49 chains	Ravine
Measured 58 chains	Ravine
Record 80.78 chains	Section Corner
Measured 82.23 chains	Section Corner



RECORD OF SURVEY FOR  
**ROGUE RIVER NATIONAL FOREST**

P.O. BOX 520  
MEDFORD, OREGON 97501  
LOCATED IN  
SECTION 22, T40S, R4W, W.M.  
JACKSON COUNTY, OREGON  
OCTOBER 29, 1982

**\*\* RECEIVED \*\***  
Date 11/15/82 By SK  
This survey consists of:  
2 sheet(s) Map  
13 page(s) Narrative  
JACKSON COUNTY  
SURVEYOR

CERTIFICATE OF SURVEYOR

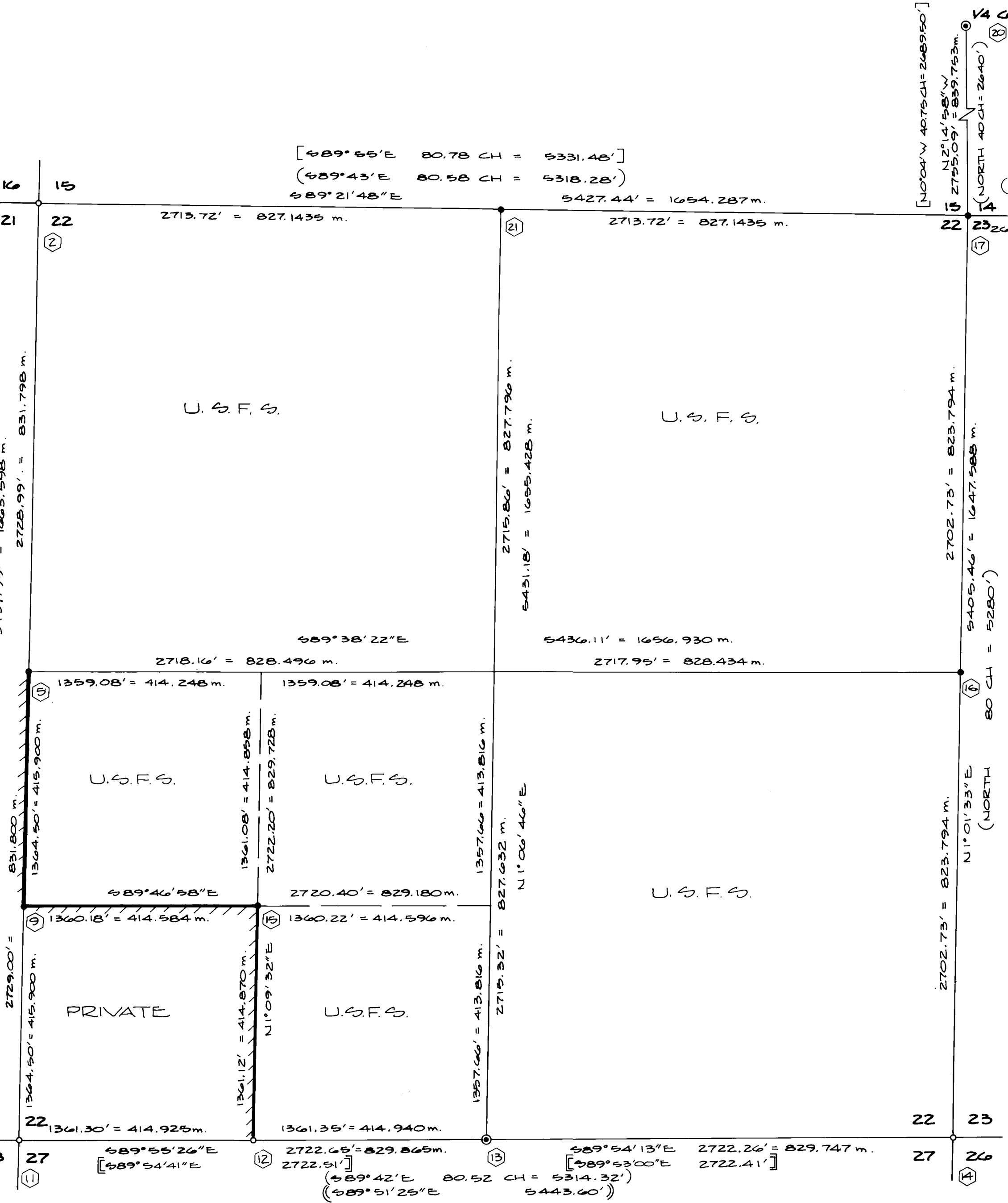
I, DAVID J. STRINGER, REGISTERED LAND SURVEYOR IN THE STATE OF OREGON, HEREBY CERTIFY THAT THIS PLAT AND THE NOTES HEREON ARE A CORRECT REPRESENTATION OF A SURVEY I PERFORMED DURING JULY 1982 THROUGH OCTOBER 1982, FOR THE U.S. FOREST SERVICE, IN ACCORDANCE WITH THE STATUTES OF THE STATE OF OREGON AND WITH THE ARTICLES OF MY CONTRACT.

HISTORY OF SURVEYS

THE EXTERIOR BOUNDARY LINE AND THE SUBDIVISION LINES OF TOWNSHIP 40 SOUTH, RANGE 4 WEST, WILLAMETTE MERIDIAN WERE SURVEYED BY SAMUEL LACKLAND UNDER G.L.O. CONTRACT NO. 429, JANUARY 5, 1882.  
THE NORTH LINE OF SECTION 22 WAS RESURVEYED BY FRED W. RUDOLF UNDER GROUP NO. 31, AUGUST 19, 1916.  
A REMONUMENTATION SURVEY BY ROLLIN D. AARJUD, CADASTRAL SURVEYOR, UNDER BLM GROUP NO. 350, MAY 3, 1957.  
A SURVEY WAS DONE BY MARK BOYDEN, C.S. FILE 3800.  
THE SOUTH LINE WAS SURVEYED BY H. LEON KENNEDY UNDER CONTRACT NO. 53-04HI-0-7885N, AUGUST, 1980.  
THE WEST LINE WAS SURVEYED BY AA SURVEYING SERVICE UNDER CONTRACT NO. 53-04HI-2-892IN, AUGUST, 1982.

LEGEND:

- FOUND BLM GLO OR USFS MONUMENT (SEE NARRATIVE)
  - ⊙ FOUND COUNTY SURVEYOR'S BRASS CAP
  - SET 2 1/2" x 30" GALVANIZED IRON PIPE WITH 2 1/2" BRASS CAP
  - SECTION LINE CALCULATED FROM TRAVERSE SURVEY
  - TTTTT PROPERTY LINE ESTABLISHED AND POSTED THIS SURVEY
  - ( ) RECORD MEASUREMENTS PER G.L.O. PLAT, 1882, CONTRACT NO. 429
  - [ ] RECORD MEASUREMENTS PER H. LEON KENNEDY - FOREST SERVICE CONTRACT NO. 53-04HI-0-7885N
  - [ ] RECORD MEASUREMENTS PER G.L.O. PLAT, 1916.
  - ( ) RECORD MEASUREMENTS PER MARK BOYDEN SURVEY, C.S. FILE 3800
- FIELD BOOKS NO. 1 THROUGH 6 ON FILE WITH AA SURVEYING SERVICE, INC.



REGISTERED PROFESSIONAL LAND SURVEYOR  
*David J. Stringer*  
OREGON  
JULY 17, 1981  
DAVID J. STRINGER  
56

EXAMINED AND ACCEPTED FOR THE U.S. FOREST SERVICE THIS 2<sup>ND</sup> DAY OF November, 1982.  
*David J. Stringer*  
CONTRACTING OFFICER'S REPRESENTATIVE

Revised January 27, 1983  
 NARRATIVE OF SURVEY TO CONFORM TO PARAGRAPH 209.250  
 OREGON REVISED STATUTES

**SURVEY FOR:** Rogue River National Forest  
 P.O. Box 520  
 Medford, Oregon 97501

**CONTRACT:** Dreamboat Cadastral Survey  
 Contract No. 53-04H1-2-8921N

**LOCATION:** Section 21 & 22, Township 40 South, Range 4 West,  
 Willamette Meridian, Jackson County, Oregon

**BASIS OF BEARINGS:** Solar Observation

**PURPOSE:** To establish, post, blaze, and monument corners as shown  
 on the accompanying plat.

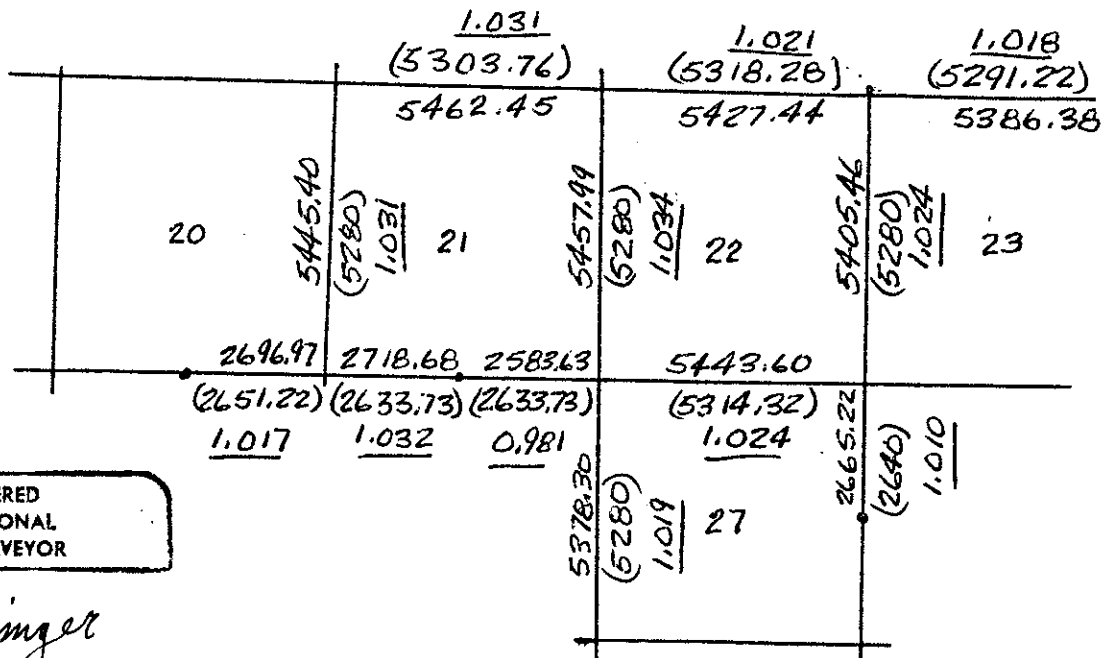
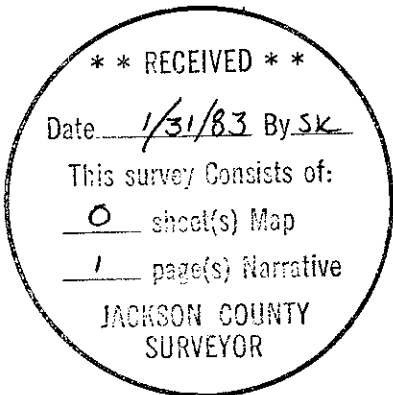
**PROCEDURE:** A search of available records revealed the history of  
 surveys as stated on the accompanying plat. I tied  
 controlling monuments by establishing a control net-  
 work and a system of closed random traverses. I tied  
 the topographic features called in the original notes  
 and made a diligent search (including extensive use  
 of a metal detector) for all lost corners. As a last  
 resort, I used the double proportion method to estab-  
 lish the northeast corner of Section 22 and the single  
 proportion method for each quarter corner established  
 by this survey.

**PROBLEMS INHERENT  
 TO THIS SURVEY:**

The largest problem that I encountered during the  
 course of this survey was the reestablishment of the  
 lost section corner at the northeast corner of Section  
 22. The following is a summary of my findings as they  
 pertain to this corner, possible interpretations of the  
 findings, and my solution.

**Findings:** The previous surveys

Samuel Lackland did the original work in 1881 and the  
 resulting plat includes Sections 22, 23, 14, and the  
 east half of 15. The following is a sketch showing  
 some of Lackland's distances, in parentheses, between  
 monuments against recently measured distances from  
 this and other surveys. The underlined number is a  
 scale factor from Lackland's distances to the recent  
 distances.



REGISTERED  
 PROFESSIONAL  
 LAND SURVEYOR

*David J. Stringer*

OREGON  
 JULY 17, 1981  
 DAVID J. STRINGER  
 #1956