

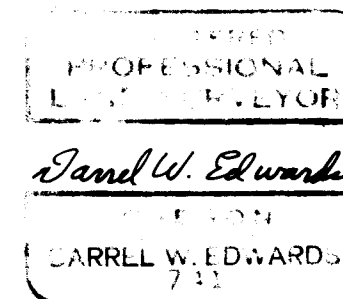
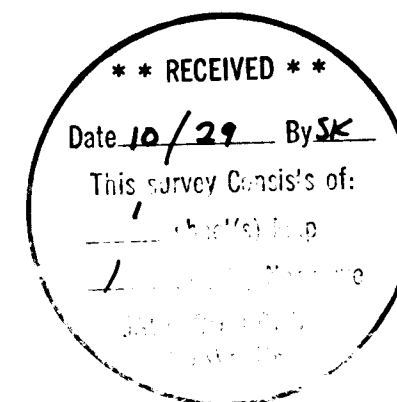
# MINOR PARTITION

Located in the SE 1/4 of Section 1, T.36 S., R.2W.W.M.  
Jackson County, Oregon

Date: Oct. 8, 1982

SURVEYED FOR:  
Ernest F. Faltersack  
P. O. Box 235  
Gold Hill, Ore.

SURVEYED BY:  
Darrel W. Edwards  
P. O. Box 801  
Rogue River, Ore.



NOTE:  
"This property, at the time of final map recording, was not shown to be suitable for development and will require at a minimum, provision of a potable water supply prior to issuance of building or mobile home set-up permits by the Jackson County Department of Planning and Development."

"Soils information for this property indicate extremely expansive soils and low bearing strength which will require special design standards to overcome."

I certify that this is a true and correct plat as filed in my office.  
Darrel W. Edwards

Approved by the Jackson County Department of Planning and Development.

By: Rebecca Date: 10/25/82

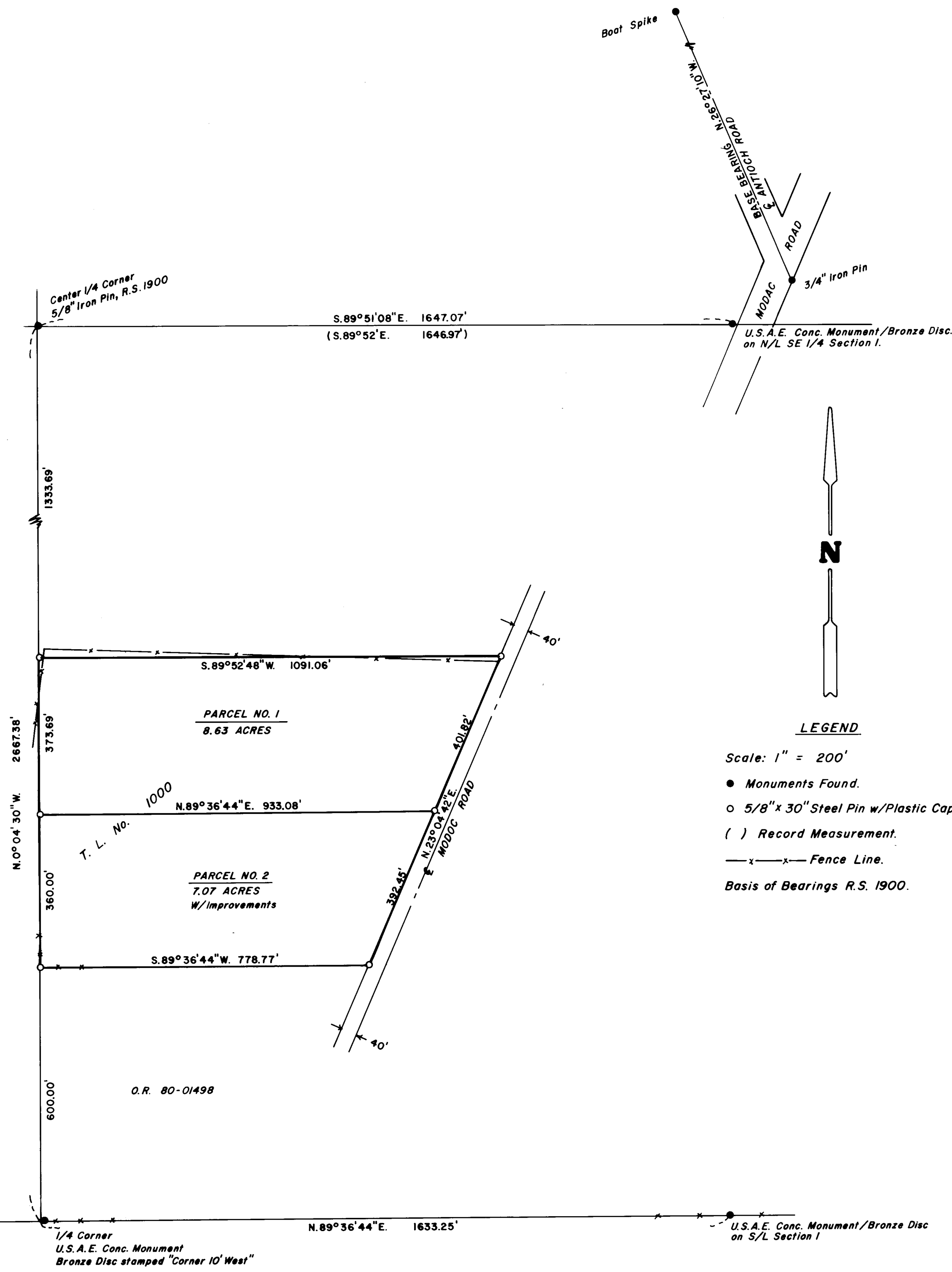
All taxes, fees, assessments, or other charges as required by O.R.S. 311.280 have been paid as of October 27, 1982.

Ray Stewart by Hana Gordon  
Director of Assessment and Taxation

Filed for record this 29 day of October, 1982, at 11:16 O'Clock A.M., in Volume 5, Page 71, of 'Minor Land Partitions' in Jackson County, Oregon.

Walden Jany  
County Clerk

Florida Baker  
Deputy



SURVEY NO. 9439

SURVEY NARRATIVE TO COMPLY WITH PARAGRAPH 209.250, OREGON REVISED STATUTES

SURVEY FOR: Ernest Faltersack  
P. O. Box 235  
Gold Hill, Ore. 97525

LOCATION: Southeast 1/4 of Section 1, T. 36 S., R. 2 W. W. M., Jackson  
County, Oregon;

PURPOSE: Minor Partition to divide Tax Lot 1000 into two separate parcels  
of land.

PROCEDURE: Found the following monuments for control:

- 1) 5/8 inch iron pin, center 1/4 corner per RS 1900.
- 2) Spike at South 1/4 corner with Bearing trees and a  
reference monument set by U.S. Army Engineers 10 feet  
N. 89° 36' 44" E.
- 3) U.S. Army Engineer's concrete monument with bronze disc  
on East - West center line of Section 1; See RS 1900.
- 4) U. S. Army Engineer's concrete monument with bronze disc  
on South line of Section 1.

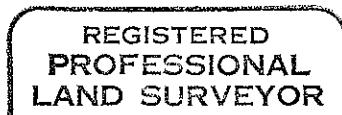
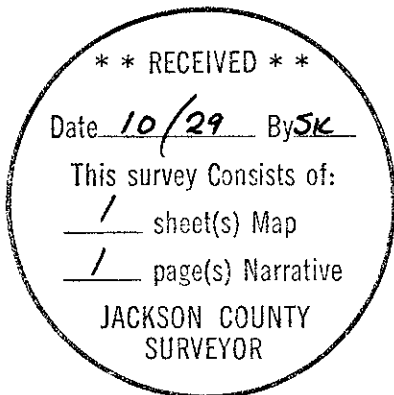
Traversed between the above described monuments and calculated  
the corner positions of the property to be surveyed. Set 5/8  
inch by 30 inch steel pins, with plastic caps stamped "D. W.  
Edwards LS 741", as shown on the accompanying plat.

EQUIPMENT: Lietz TM 20-C theodolite and Lietz Red-1 EDM.

BASIS OF BEARINGS: RS 1900

Date Completed: October 12, 1982

Darrel W. Edwards  
P. O. Box 801  
Rogue River, Ore. 97537  
phone 582-3110



*Darrel W. Edwards*

