

# MAP OF SURVEY

FOR

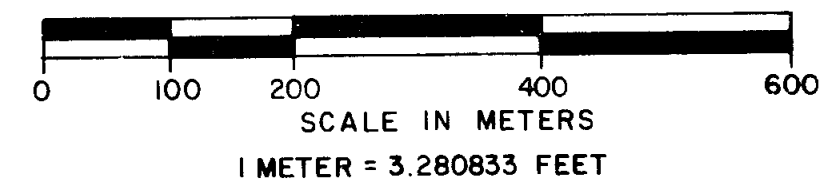
## ROGUE RIVER NATIONAL FOREST

P.O. BOX 520  
MEDFORD, OREGON

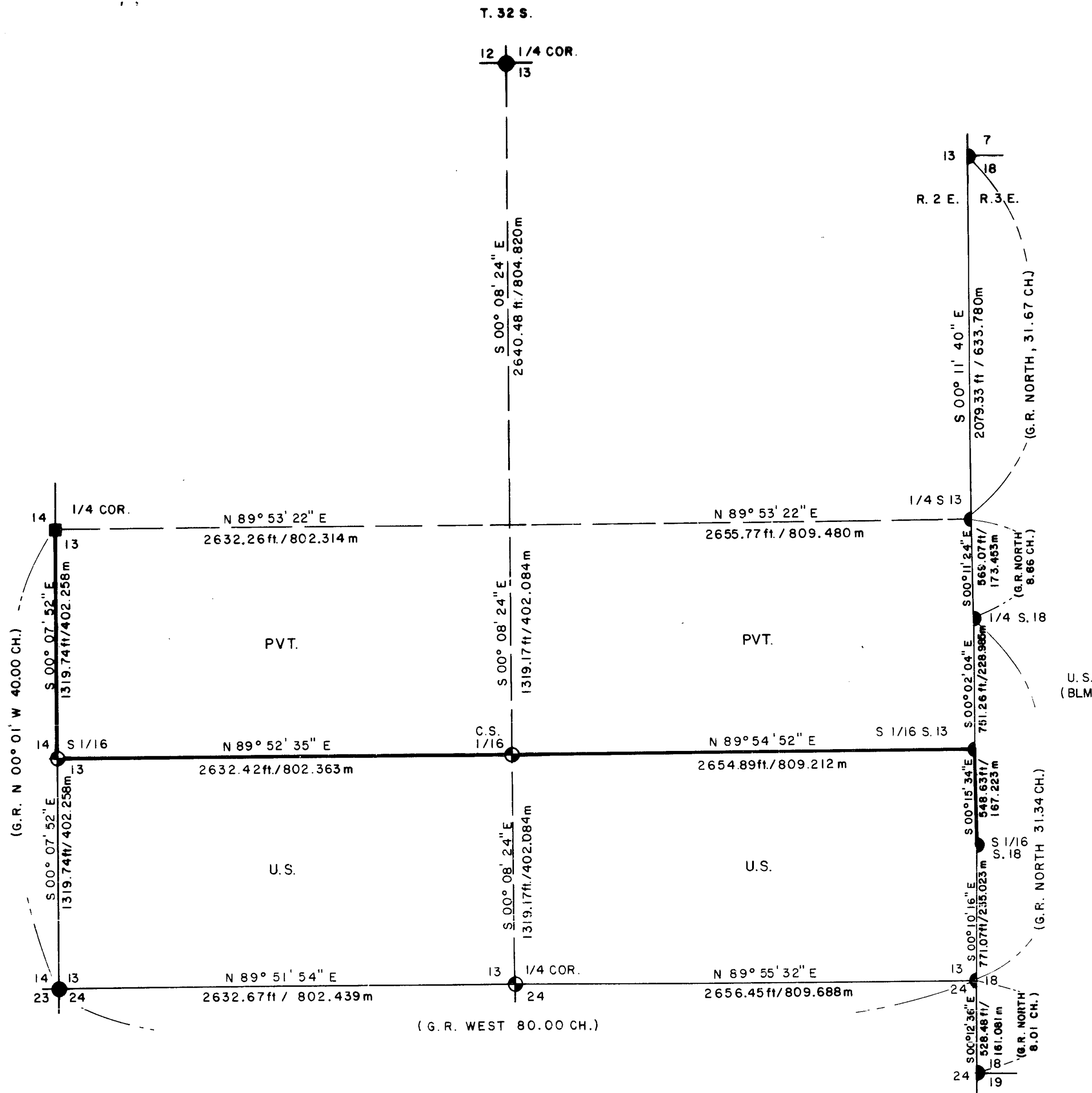
SEPTEMBER 5, 1982



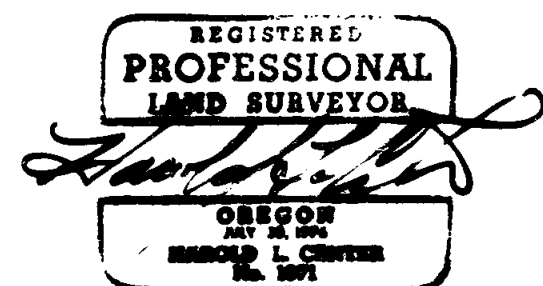
BASIS OF BEARING: SOLAR OBSERVATION



HISTORY OF SURVEYS: SEE ATTACHED NARRATIVE



**\*\* RECEIVED \*\***  
Date 10/13/82 Bvsk  
This survey consists of:  
- 1 - sheet(s) Map  
- 7 - page(s) Narrative  
JACKSON COUNTY  
SURVEYOR



**LEGEND**

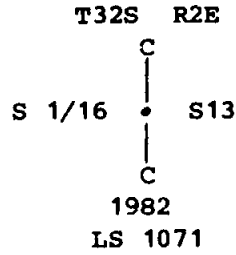
- FOUND STANDARD BLM OR JACKSON COUNTY SURVEYOR BRASS CAP MONUMENT.
- ⊕ SET 2-1/2" DIA. x 30" LG. IRON POST WITH 2-1/2" DIA. BRASS CAP.
- FOUND JACKSON COUNTY SURVEYOR MONUMENT (1" DIA. IRON POST WITH 2" DIA. POT METAL FILLED REDUCER).
- PROPERTY LINE MARKED AND POSTED.
- SECTION LINE CALCULATED FROM TRAVERSE SURVEY.
- - - SUBDIVISION LINE CALCULATED FROM TRAVERSE SURVEY.

**CERTIFICATE OF SURVEY**

I, HAROLD L. CENTER, REGISTRATION No. 1071, REGISTERED PROFESSIONAL LAND SURVEYOR, STATE OF OREGON, HEREBY CERTIFY THAT THIS MAP CORRECTLY REPRESENTS A SURVEY MADE BY ME OR UNDER MY DIRECTION, IN CONFORMANCE WITH THE LAWS OF THE STATE OF OREGON, AT THE REQUEST OF THE U.S. FOREST SERVICE.

U.S. DEPT. OF AGRICULTURE <b>FOREST SERVICE</b> REGION 6 ROGUE RIVER NATIONAL FOREST	
<b>DEPENDENT RESURVEY AND SECTION SUBDIVISION</b>	
<b>SECTION 13, T. 32 S., R. 2 E., W.M. JACKSON COUNTY, OREGON</b>	
REVIEWED BY: <u>[Signature]</u>	DATE: <u>10/13/82</u>
REVIEWED BY: <u>[Signature]</u>	DATE: <u>10/5/82</u>

At the corner point, I set a 2½-inch diameter by 30-inch long galvanized iron post with a 2½-inch diameter brass cap marked:



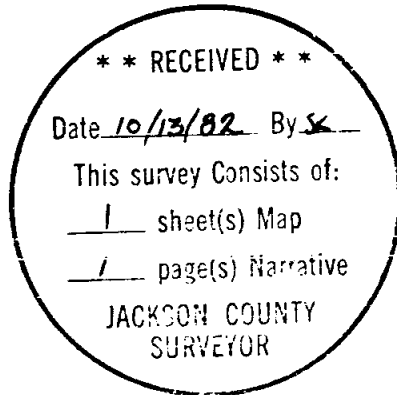
From which the following references:

A 19-inch diameter fir bears S 58° 25' E, 35.23 feet distance, scribed "CS 1/16 S13 LS 1071 BT."

A 38-inch diameter cedar bears S 36° 59' W, 41.83 feet distance, scribed "CS 1/16 S13 LS 1071 BT."

September 5, 1982

HAROLD L. CENTER  
Registered Professional Land Surveyor  
Oregon Certificate No. 1071



From which the following references:

- An 18-inch diameter fir bears N 12° 18' E, 12.30 feet distance with scribe marks "CS BT" visible.
- A 14-inch diameter fir bears S 43° 21' E, 39.53 feet distance with scribe marks "CS BT" visible.
- A 31-inch diameter fir snag bears S 05° 49' E, 165.27 feet distance with a healed blaze.
- A 33-inch diameter fir bears S 03° 53' W, 174.23 feet distance with a healed blaze.
- A 24-inch diameter fir bears N 31° 55' W, 35.25 feet distance with scribe marks "CS BT" visible.

CORNERS ESTABLISHED THIS SURVEY

One-quarter corner common to Sections 13 and 24, Township 32 South, Range 2 East.

At the corner point, I found a stone, firmly set in the ground, with a faint "1/4" visible on the north face. I remove said stone, and at the corner point, I set a 2 1/2-inch diameter by 30-inch long galvanized iron post with a 2 1/2-inch diameter brass cap marked:

T32S R2E  
1/4  $\frac{S13}{S24}$   
1982  
LS 1071

From which the following references:

- A 48-inch diameter fir bears S 80° 39' E, 132.89 feet distance with scribe marks "1/4S" visible on opened face.
- A 27-inch diameter fir bears S 59° 19' W, 7.00 feet distance, scribed "1/4 S24 LS 1071 BT."
- A 16-inch diameter fir bears N 21° 32' W, 14.10 feet distance, scribed "1/4 S13 LS 1071 BT."

South one-sixteenth corner common to Sections 13 and 14, Township 32 South, Range 2 East.

At the corner point, I set a 2 1/2-inch diameter by 30-inch long galvanized iron post with a 2 1/2-inch diameter brass cap marked:

T32S R2E  
S 1/16  
S14 | S13  
1982  
LS 1071

From which the following references:

- A 10-inch diameter fir bears S 71° 44' E, 52.60 feet distance, scribed "S 1/16 S13 LS 1071 BT."
- A 23-inch diameter fir bears S 45° 57' W, 78.80 feet distance, scribed "S 1/16 S14 LS 1071 BT."

Center-South one-sixteenth corner of Section 13, Township 32 South, Range 2 East.

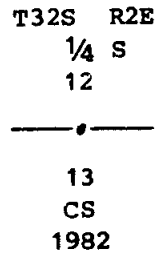
From which the following references:

A 10-inch diameter fir bears N 37° 56' E, 25.10 feet distance with scribe marks "T32S R3E S7 BT" visible on a partially healed blaze.

A 10-inch diameter fir bears S 65° 37' E, 13.70 feet distance with scribe marks "T32S R3E S18 BT" visible on a partially healed blaze.

One-quarter corner common to Sections 12 and 13, Township 32 South, Range 2 East.

At the corner point, I found a standard Jackson County Surveyor's brass cap monument marked:



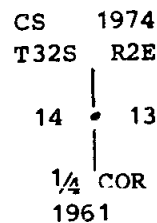
From which the following references:

A 20-inch diameter hemlock bears N 82° 28' W, 27.79 feet distance with scribe marks "1/4" visible.

A 21-inch diameter hemlock bears S 36° 26' E, 96.44 feet distance with scribe marks "CS BT" visible.

One-quarter corner common to Sections 13 and 14, Township 32 South, Range 2 East.

At the corner point, I found a 1-inch diameter iron post with a 2-inch diameter bell pipe reducer filled with pot metal marked:



From which the following references:

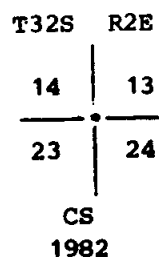
A 20-inch diameter fir bears N 36° 47' E, 63.30 feet distance with a healed blaze.

A 13-inch diameter fir bears S 40° 03' W, 39.70 feet distance with a partially healed blaze.

A 19-inch diameter fir bears S 76° 57' W, 12.90 feet distance with scribe marks "1/4" visible on an open blaze.

Section corner common to Sections 13, 14, 23 and 24, Township 32 South, Range 2 East.

At the corner point, I found a standard Jackson County Surveyor's brass cap monument marked:



At the corner point, I found a standard Bureau of Land Management brass cap monument marked:

U.S. Dept. of Interior  
 Unlawful to Disturb  
 T32S  
 R2E      R3E  
 |  
 1/4  
 |  
 S18  
 |  
 1962

From which the following references:

A 17-inch diameter cedar bears N 61° 54' E, 9.00 feet distance with scribe marks "1/4 S18 BT" visible.

A 51-inch diameter fir bears N 88° 06' E, 22.20 feet distance with scribe marks "4S" visible.

A 19-inch diameter cedar bears S 30° 10' E, 46.65 feet distance with scribe marks "4 S18 BT" visible.

A 16-inch diameter fir bears S 18° 16' W, 12.40 feet distance with a single healed blaze.

East one-quarter corner of Section 13, Township 32 South, Range 2 East.

At the corner point, I found a standard Bureau of Land Management brass cap monument marked:

U.S. Dept. of Interior  
 Unlawful to Disturb  
 T32S  
 R2E      1/4      R3E  
 |  
 S13  
 |  
 1980  
 1962  
 Cadastral Surveys  
 Bureau of Land Management

From which the following references:

A 26-inch diameter fir bears N 16° 22' W, 143.60 feet distance with a healed blaze.

A 21-inch diameter fir bears S 00° 01' W, 115.21 feet distance with a healed blaze.

Section corner common to Sections 7 and 18, Township 32 South, Range 3 East, and Section 13, Township 32 South, Range 2 East.

At the corner point, I found a standard Bureau of Land Management brass cap monument marked:

U.S. Dept. of Interior  
 Unlawful to Disturb  
 T32S  
 R2E      R3E  
 |  
 S13      S7  
 |  
 S18  
 |  
 1962  
 Cadastral Surveys  
 Bureau of Land Management

From which the following references:

A 14-inch diameter fir bears N 08° 49' W, 47.47 feet distance with a partially healed blaze.

A 25-inch diameter fir bears S 74° 28' W, 21.76 feet distance with scribe marks "T32S R2E S24 BT" visible on partially healed blaze.

South one-sixteenth corner of Section 18, Township 32 South, Range 3 East.

At the corner point, I found a standard Bureau of Land Management brass cap monument marked:

U.S. Dept. of Interior  
Unlawful to Disturb  
S 1/16  
|  
S18  
R3E  
|  
1980  
1962  
Cadastral Surveys  
Bureau of Land Management

From which the following references:

A 62-inch diameter pine bears N 53° 52' E, 52.59 feet distance with a single healed blaze.

A 15-inch diameter fir bears S 28° 33' E, 17.60 feet distance with a single healed blaze.

South one-sixteenth corner of Section 13, Township 32 South, Range 2 East.

At the corner point, I found a standard Bureau of Land Management brass cap monument marked:

U.S. Dept. of Interior  
Unlawful to Disturb  
S 1/16  
S13  
|  
1980  
Cadastral Surveys  
Bureau of Land Management

From which the following references:

A 7-inch diameter fir bears S 10° 56' W, 12.80 feet distance with scribe marks "1/16 S13 BT" visible.

A 7-inch diameter cedar bears S 37° 56' W, 6.80 feet distance with scribe marks "S 1/16 S13 BT" visible.

Note: The faces on the bearing trees do not face the corner.

West one-quarter corner of Section 18, Township 32 South, Range 3 East.

The East line of Section 13 was retraced, tying the controlling corners to part of a closed traverse. The junior corners along the range line were tied to the closed traverse and subsequent computations revealed the monumented positions of these junior corners to be within limits in both alignment and distance as defined in the Bureau of Land Management's 1973 Manual of Surveying Instructions. I accept the monumented positions of the junior corners, and use them in delineating the property line along the East line of Section 13.

With all required corner points recovered and tied to a closed traverse, I proceeded to subdivide Section 13, monumenting the required corner points and posting property lines as required. Property lines were posted using aluminum posts with National Forest boundary signs attached. Trees along the property line were blazed and painted with red timber marking paint.

EQUIPMENT USED: This survey was performed utilizing a Wild T-2 Theodolite and a Hewlett-Packard 3808 Electronic Distance Meter.

CORNERS ACCEPTED FOR CONTROL

Section corner common to Sections 18 and 19, Township 32 South, Range 3 East, and Section 24, Township 32 South, Range 2 East.

At the corner point, I found a standard Bureau of Land Management brass cap monument marked:

U.S. Dept. of Interior  
 Unlawful to Disturb  
 T32S  

R2E		R3E
S24		S18 S19

 1962  
 Cadastral Surveys  
 Bureau of Land Management

From which the following references:

A 14-inch diameter fir bears N 48° 59' E, 37.90 feet distance with a healed blaze.

A 31-inch diameter fir bears S 74° 58' E, 74.10 feet distance with a healed blaze.

Section corner common to Sections 13 and 24, Township 32 South, Range 2 East, and Section 18, Township 32 South, Range 3 East.

At the corner point, I found a standard Bureau of Land Management brass cap monument marked:

U.S. Dept. of Interior  
 Unlawful to Disturb  
 T32S  

R2E		R3E
S13 S24		S18

 1980  
 Cadastral Surveys  
 Bureau of Land Management

SURVEY NARRATIVE TO COMPLY WITH  
PARAGRAPH 209.250 OREGON REVISED STATUTES

**SURVEY FOR:** Rogue River National Forest  
P. O. Box 520  
Medford, OR 97501

**LOCATION:** Section 13, Township 32 South, Range 2 East,  
Willamette Meridian, Jackson County, Oregon.

**BASIS OF BEARING:** Solar observation

**PURPOSE:** To establish corners and mark and post National  
Forest Boundaries within Section 13.

**HISTORY OF SURVEYS:** The East line of Section 13 was surveyed by Turner  
and Howard under contract No. 142, dated  
September 9, 1870.

The remaining lines of Section 13 were surveyed,  
and the East line of Section 13 was retraced by  
Peter Applegate under contract No. 651, dated  
April 25, 1896.

The Bureau of Land Management remonumented the West  
one-quarter corner of Section 18, Township 32  
South, Range 3 East, from original evidence in  
1962.

The Bureau of Land Management, in 1980,  
reestablished the Southeast section corner and the  
East one-quarter corner of Section 13 by propor-  
tionate measure. They also established the South  
one-sixteenth corners for Section 13, Township 32  
South, Range 2 East, and Section 18, Township 32  
South, Range 3 East.

The Jackson County Surveyor remonumented the West  
one-quarter corner of Section 13 in 1974, and the  
North one-quarter and Southwest section corners of  
Section 13 in 1982.

No other surveys of record were recovered.

**PROCEDURE:** Prior to commencement of this survey, an investiga-  
tion of all controlling section and one-quarter  
section corners was made. With the required  
controlling corner positions verified, I  
established a series of traverse lines tying all  
corners to part of a closed traverse. From this  
data a search area was computed for the South one-  
quarter corner of Section 13. At the corner point  
I recovered a stone, firmly set, with "1/4" marked on  
the north face, marking the position of the south  
one-quarter corner of Section 13. I further  
verified this corner point by opening a 48-inch  
diameter fir, revealing scribe marks "1/4S" inside.  
I accept the position of the stone as marking the  
position of the south one-quarter corner of  
Section 13, and remonument said point as described  
later within this narrative.