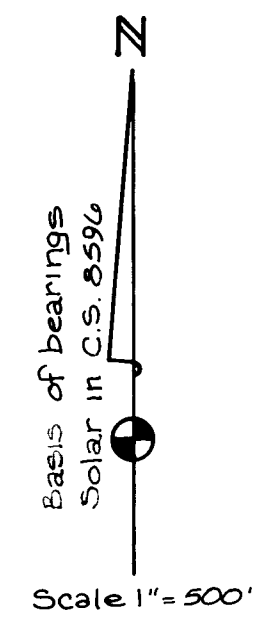
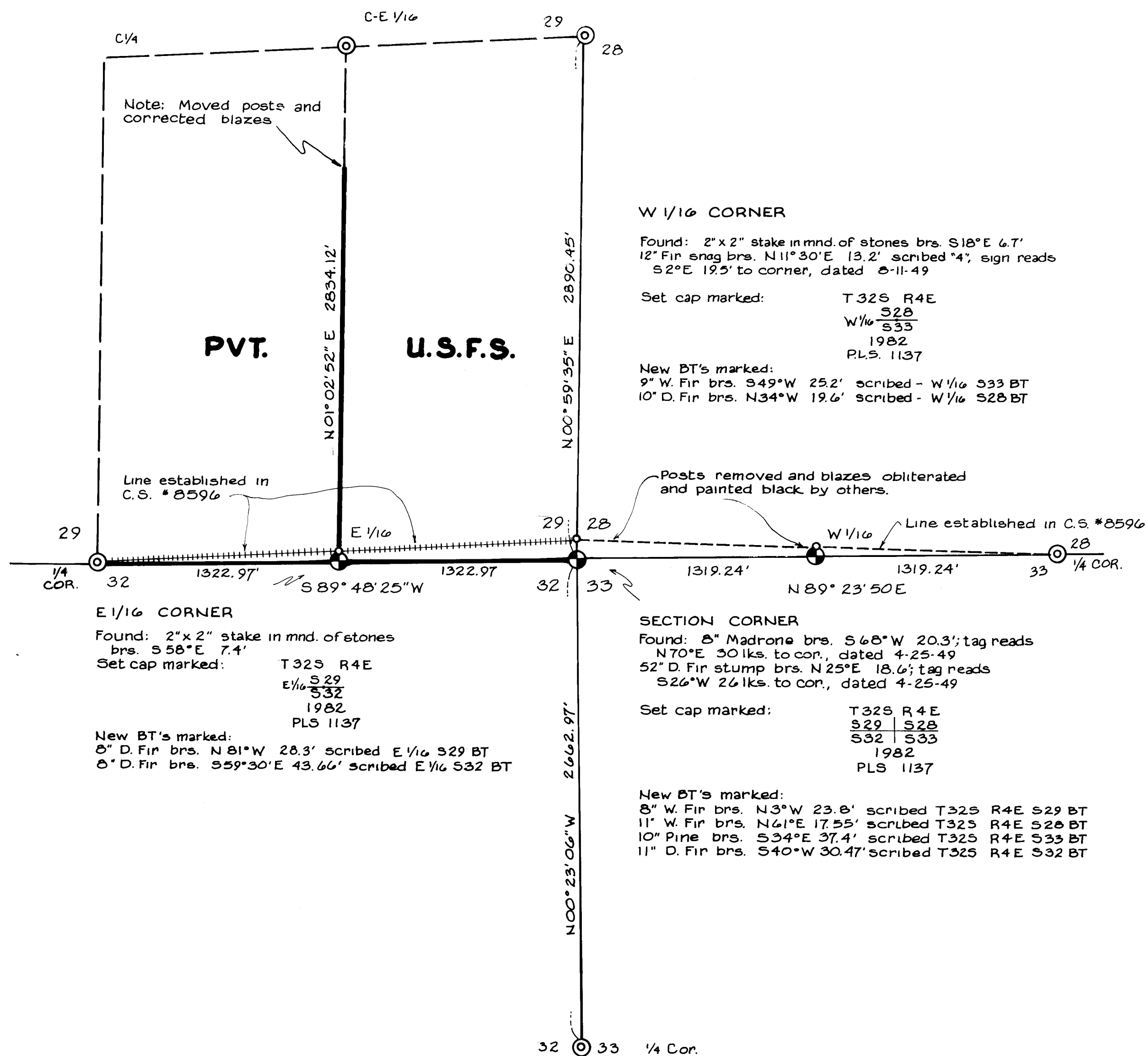


**AMENDED SURVEY
FOR
U. S. FOREST SERVICE
IN
SECTIONS 28, 29, 32, 33, T. 32 S., R. 4 E., W.M.
JACKSON COUNTY, OREGON
JUNE, 1982**



- Legend
- ⊙ Found brass cap monument as per C.S. 8596
 - Removed monument, signs, posts and obliterated BT's + painted blazes black
 - ⊕ Set relocated 2 1/2" x 30" I. pipe w/ brass cap with date changed
 - +++++ Posting removed, blazes obliterated and painted black
 - Set posts and blazed property lines
 - Section Line
 - Section subdivision Line

References

Refer to County Survey No. 8596 for history of survey, found monument data and additional information.

Narrative

Due to collateral evidence found supporting the local corner position for the S.E. corner of Sec. 29, the double proportioned position and the 2 adjacent 1/16th corners will be removed. Evidence of the original corner or accessories was not found except blaze lines (some blazes dating to 1882) running East and West from the local corner position. Evidence for said local corner is as follows:

- 1) Blazes running East and West
- 2) Creek calls to the East and South agree with original notes.
- 3) Two tags found on nearby trees referencing the corner dated 4/25/49
- 4) The above data is consistent with information surveyed by Morse, surveyor with Boise-Cascade and the U.S. Forest Service
- 5) The distance to the 1/4 corner between sections 32 and 33 is closer to the distance in the original notes.

There is a possibility that the original surveyor never surveyed North to the quarter corner between Sections 29 and 28 because of the lack of topography calls and the excess distance.

With the above data and survey information I developed in 1980 in C.S. No. 8596 I recomputed new corner positions for the E 1/16 ²⁹/₃₂, ²⁹/₃₂ and W 1/16 ³²/₃₃ corners based on the above described local corner position.

All bearing trees were tied to by transit and steel chain, have BT tags facing the corner, attention on L.S. signs facing away from the corner and a 6"-8" band of red paint at eye level. All new BT's have a double face with one of our L.S. numbers on a 3/4" brass washer nailed to the lower blaze on the face. A steel post with monument sign is set on line 3'-5' from the corner monument.

I, Donald L. Branch, Registered Professional Land Surveyor in the State of Oregon, hereby certify that this plat and the notes hereon or attached are a correct representation of a survey we performed during May, 1982 for the U.S. Forest Service, in accordance with the statutes of the State of Oregon.

