

9278

COUNTRYWOOD SUBDIVISION UNIT I

POSTMONUMENTATION MAP

LOCATED IN
S.W. 1/4 SEC. 8, T36S, R.1W, W.M.
CITY OF MEDFORD, JACKSON COUNTY, OREGON

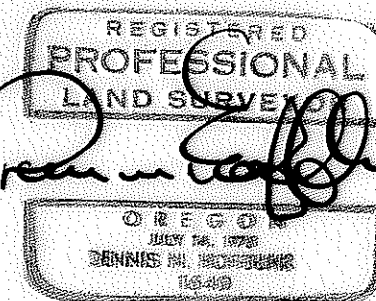
○ = SET 5/8" x 30" IRON PIN

● = MONUMENTS FOUND PER ORIGINAL SUBDIVISION PLAT

○ = SET 5/8" x 24" IRON PIN

⊙ = SET BRASS DISC

I DENNIS N. HOFFBUHR, DULY REGISTERED SURVEYOR OF THE STATE OF OREGON, DO HEREBY CERTIFY THAT THIS MAP REPRESENTS A SURVEY MADE BY ME OR UNDER MY DIRECTION, AND THAT THE MONUMENTS CONFORM TO REQUIREMENTS OF O.R.S. 92.060 AND TO THE LOCATIONS AS SHOWN ON THE ORIGINAL PLAT OF COUNTRYWOOD UNIT I.

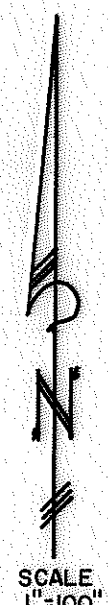
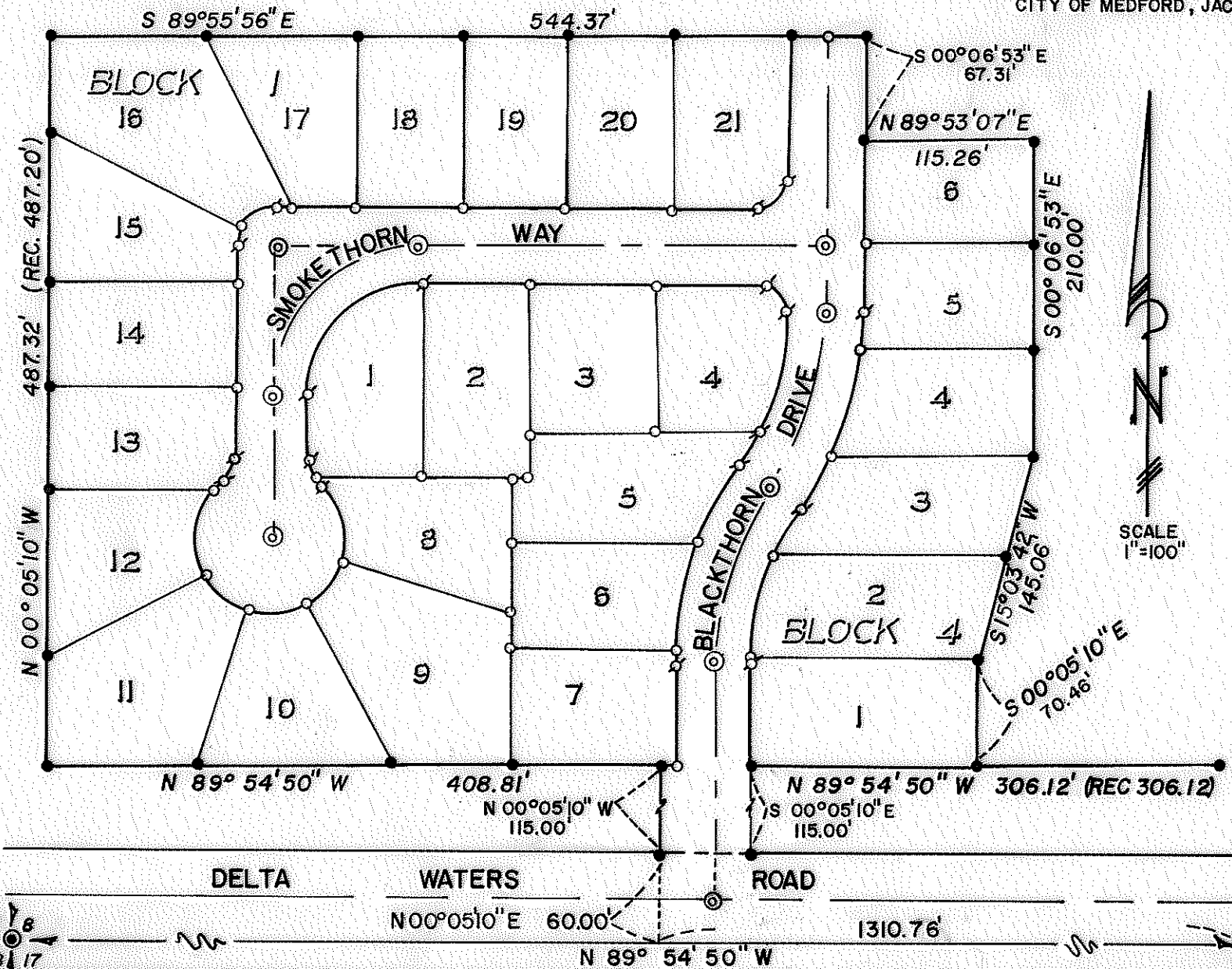
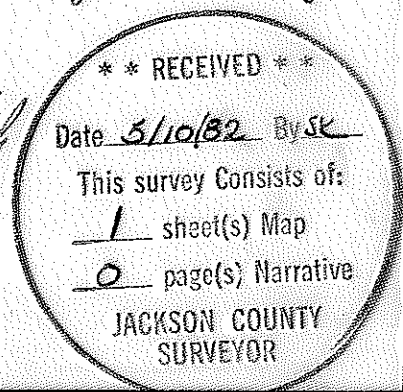


FILED FOR RECORD THIS 10th DAY OF May
1982 AT 2:13 O'CLOCK P. M. AND RECORDED IN THE
OFFICIAL RECORDS OF JACKSON COUNTY, OREGON.

Waldene Perry COUNTY CLERK
Ruby A. Poling DEPUTY

EXAMINED AND APPROVED THIS
15th DAY OF June, 1981.

Dennis N. Hoffbuhr
CITY SURVEYOR



400
200
2:13

82-06635

37 1w 8cc

9278