

COUNTRYWOOD SUBDIVISION UNIT 3

POSTMONUMENTATION MAP

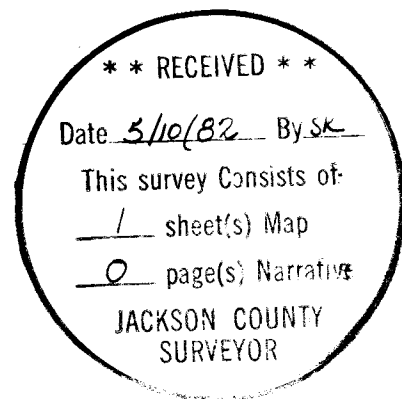
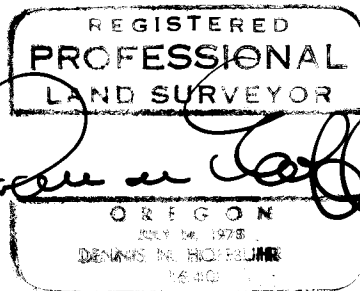
LOCATED IN

S.E. 1/4 of SEC. 8, T.37S., R.1W., W.M.

CITY OF MEDFORD, JACKSON COUNTY, OREGON

I, Dennis N. Hoffbuhr, duly registered Surveyor of the State of Oregon, do hereby certify that this map correctly represents a survey made by me or under my direction, and that the monuments conform to requirements of O.R.S. 92.060 and to the locations as shown on the original plat of Countrywood Subdivision Unit 3.

Dennis N. Hoffbuhr
Surveyor



82-06641

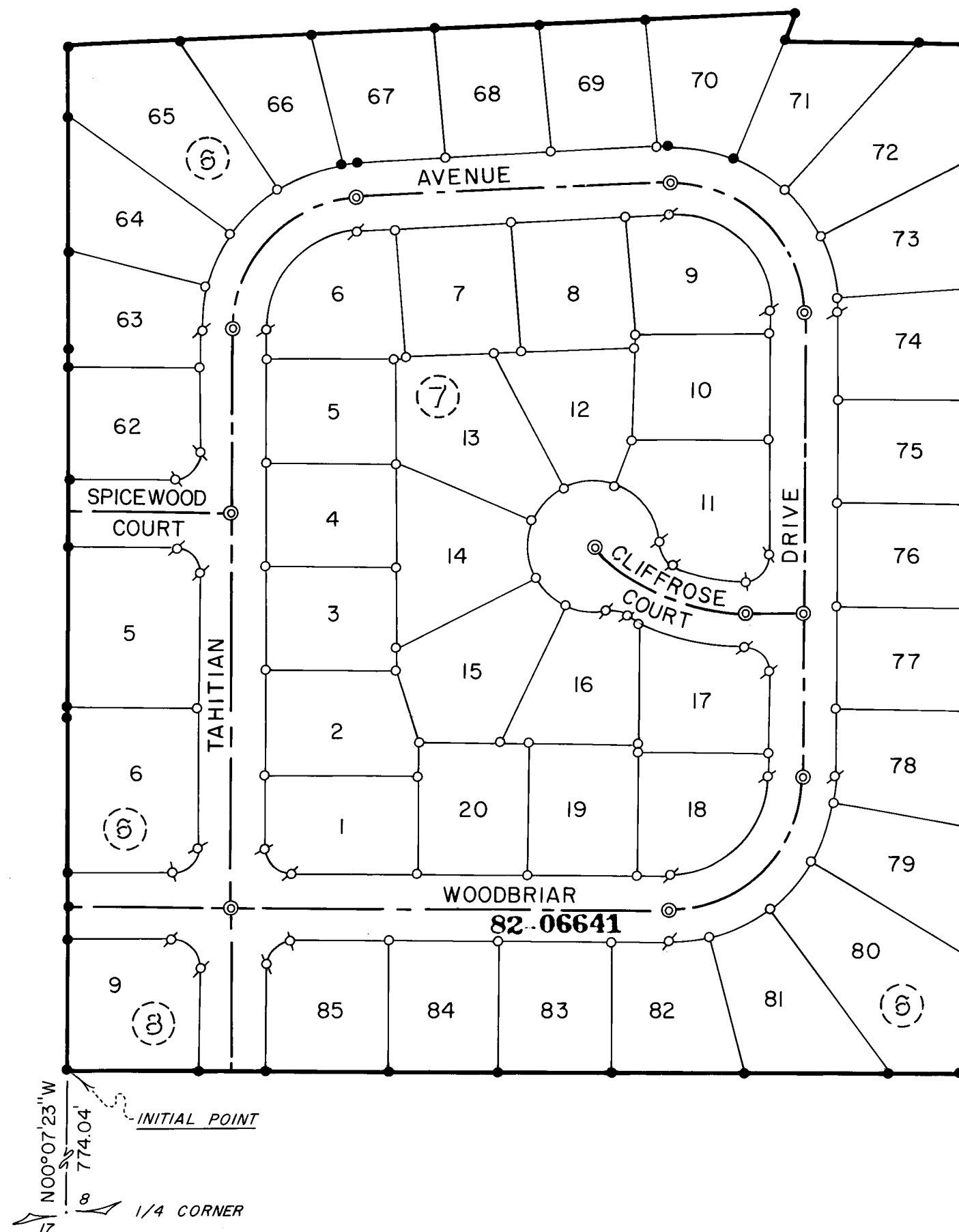
Examined and approved this 8th day of May 1981

Lepia M. Cook
City Surveyor

Filed for record this 10th day of May 1982 at 2:13 O'Clock P.M. and recorded in the official records of Jackson County, Oregon.

Haldene Perry
County Clerk

Ruby G. Poling
Deputy



HOFFBUHR SURVEYING, INC. MEDFORD, OREGON
SCALE 1" = 100' FEBRUARY, 1981

- = MONUMENTS SET PER ORIGINAL SUBDIVISION PLAT
- = SET 5/8" x 24" IRON PIN
- ⊗ = SET 5/8" x 30" IRON PIN
- ⊙ = SET BRASS DISC IN CONCRETE

NOTE: SEE PLAT OF COUNTRYWOOD SUBDIVISION UNIT 3, FILED FOR RECORD THE 18th DAY OF DECEMBER, 1980, AT 2:57 O'CLOCK P.M. AND RECORDED IN VOLUME 14 OF PLATS ON PAGE 52 OF RECORDS OF JACKSON COUNTY, OREGON, FOR LOT BEARINGS AND DISTANCES.