

1650  
200

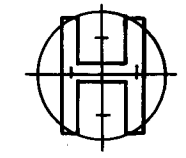
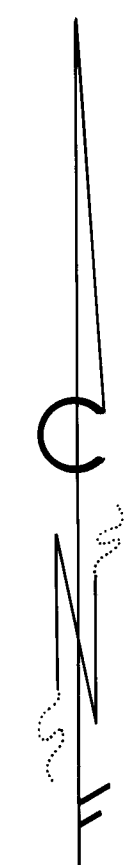
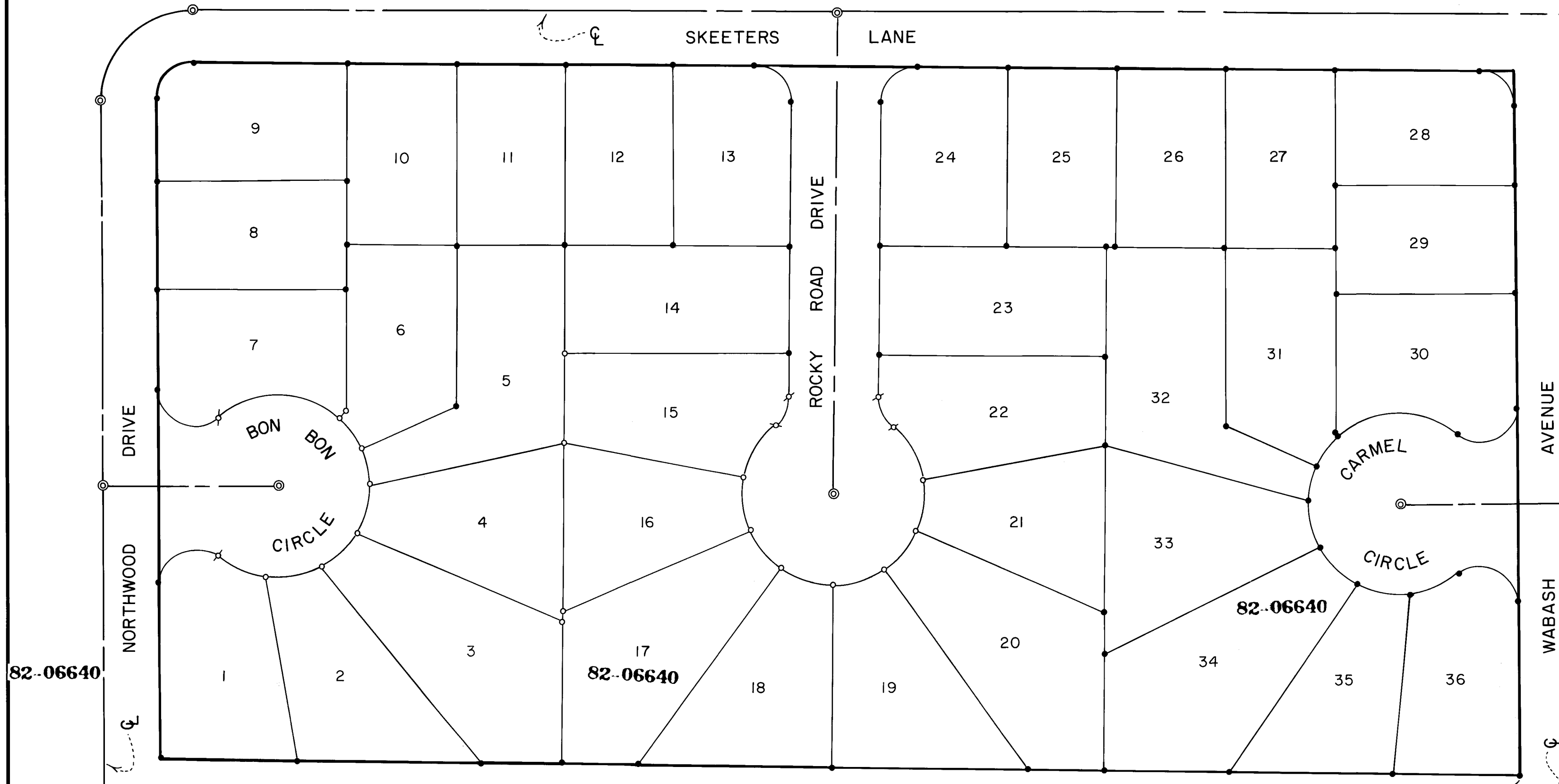
# DIVINITY SQUARE SUBDIVISION

POSTMONUMENTATION MAP

LOCATED IN

S.E. 1/4 of SEC. 19, T. 37S., R. 1W., W.M.

CITY OF MEDFORD, JACKSON COUNTY, OREGON



HOFFBUHR SURVEYING, INC. MEDFORD, OREGON  
 SCALE 1"=50' JANUARY, 1982

- = MONUMENTS SET PER ORIGINAL SUBDIVISION PLAT
- = SET 5/8" x 24" IRON PIN
- ⊙ = SET 5/8" x 30" IRON PIN
- ⊗ = SET BRASS CAP IN CONCRETE

NOTE: SEE PLAT OF DIVINITY SQUARE SUBDIVISION,  
 FILED FOR RECORD THE 26th DAY OF JULY  
 1978, AT 2:55 O'CLOCK P.M. AND RECORDED  
 IN VOLUME 13 OF PLATS ON PAGE 45 OF  
 RECORDS OF JACKSON COUNTY, OREGON,  
 FOR LOT BEARINGS AND DISTANCES.

INITIAL POINT, ---  
 From which the E.N.E.  
 Cor. D.L.C. No. 42 bears  
 S00°21'40"E, 355.43';  
 West, 1818.06' and  
 South, 65.48'

Examined and approved this 27<sup>th</sup> day of March 1982  
*Dennis N. Hoffbuhr*  
 City Surveyor

Filed for record this 10<sup>th</sup> day of May 1982 at  
 2:13 O'Clock P.M. and recorded in the official records of Jackson  
 County, Oregon  
*Waldene Perry*  
 County Clerk

*Ruby G. Poling*  
 Deputy

I, Dennis N. Hoffbuhr, duly registered Surveyor of the  
 State of Oregon, do hereby certify that this map represents a  
 survey made by me or under my direction, and that the  
 monuments conform to requirements of O.R.S. 92.060 and to  
 the locations as shown on the original plat of Divinity Square  
 Subdivision.

