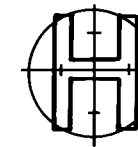


SHASTA MEADOWS SUBDIVISION

POSTMONUMENTATION MAP
LOCATED IN

D.L.C. No. 46 and the SE 1/4 of SEC. 3, T.36S, R.1W, WM.
CITY OF EAGLE POINT, JACKSON COUNTY, OREGON

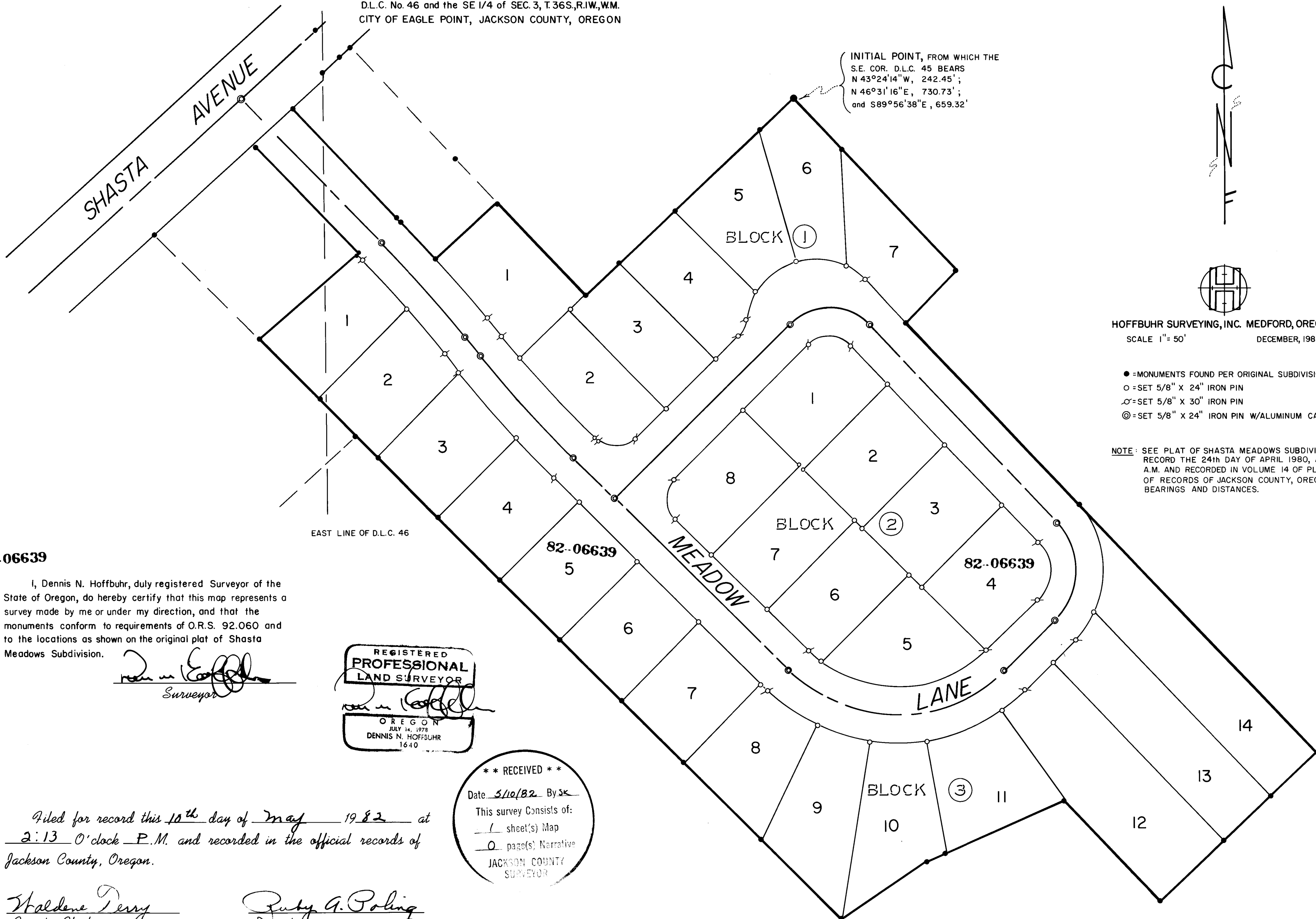
INITIAL POINT, FROM WHICH THE
S.E. COR. D.L.C. 45 BEARS
N 43°24'14"W, 242.45';
N 46°31'16"E, 730.73';
and S89°56'38"E, 659.32'



HOFFBUHR SURVEYING, INC. MEDFORD, OREGON
SCALE 1" = 50' DECEMBER, 1980

- = MONUMENTS FOUND PER ORIGINAL SUBDIVISION PLAT
- = SET 5/8" X 24" IRON PIN
- ⊙ = SET 5/8" X 30" IRON PIN
- ⊗ = SET 5/8" X 24" IRON PIN W/ALUMINUM CAP

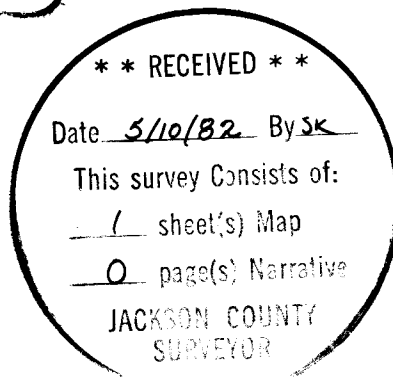
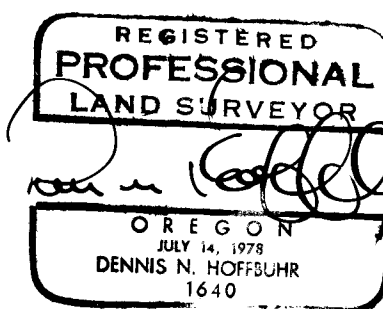
NOTE: SEE PLAT OF SHASTA MEADOWS SUBDIVISION, FILED FOR RECORD THE 24th DAY OF APRIL 1980, AT 11:52 O'CLOCK A.M. AND RECORDED IN VOLUME 14 OF PLATS ON PAGE 23 OF RECORDS OF JACKSON COUNTY, OREGON, FOR LOT BEARINGS AND DISTANCES.



82-06639

I, Dennis N. Hoffbuhr, duly registered Surveyor of the State of Oregon, do hereby certify that this map represents a survey made by me or under my direction, and that the monuments conform to requirements of O.R.S. 92.060 and to the locations as shown on the original plat of Shasta Meadows Subdivision.

Dennis N. Hoffbuhr
Surveyor



Filed for record this 10th day of May 1982 at 2:13 O'clock P.M. and recorded in the official records of Jackson County, Oregon.

Waldene Perry
County Clerk

Ruby G. Poling
Deputy

Examined and approved this 6th day of MAY, 1982.

Robert B. Wiegand
City Engineer