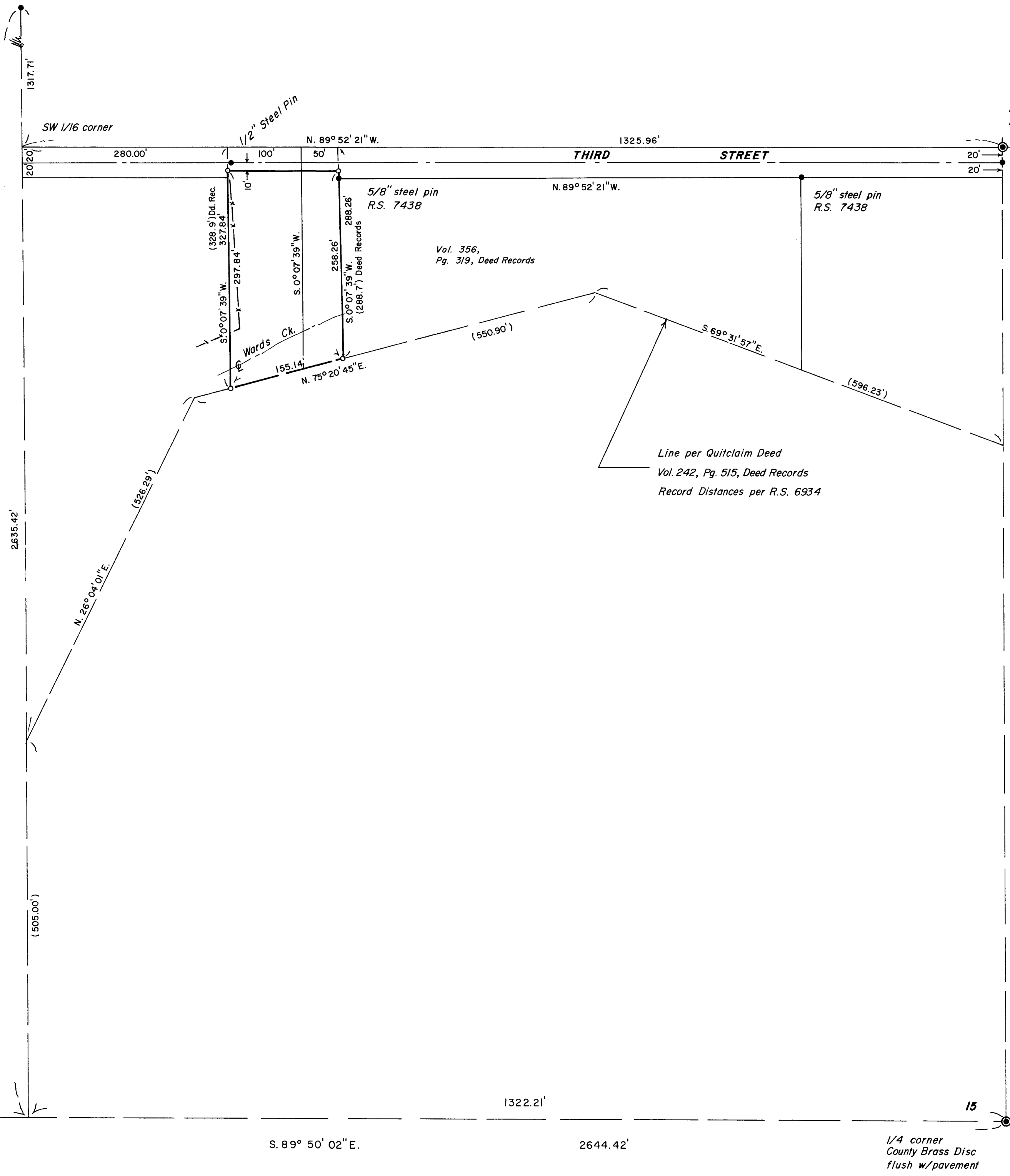


CW 1/16 corner  
5/8" steel pin  
R.S. 5583



B.C., CS 1/16 corner  
Initial Pt., Prospector's Add.

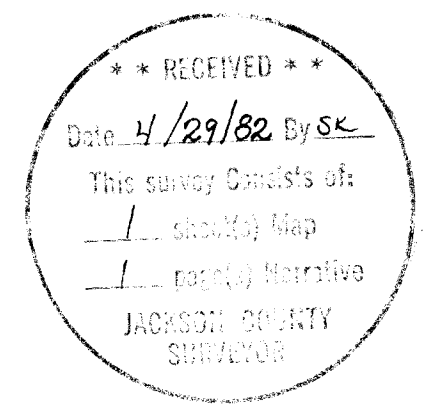
1/2" steel pin  
flush w/pavement

Vol. 356,  
Pg. 319, Deed Records

Line per Quitclaim Deed  
Vol. 242, Pg. 515, Deed Records  
Record Distances per R.S. 6934



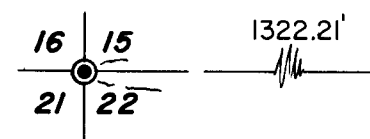
BASIS OF BEARINGS: R.S. 7679



REGISTERED  
PROFESSIONAL  
LAND SURVEYOR

*Darrel W. Edwards*  
OREGON  
DARREL W. EDWARDS  
741

Section corner  
1" iron pipe  
in mon. case



1/4 corner  
County Brass Disc  
flush w/pavement

**SURVEY FOR: Parnell Giesen**

SCALE: 1"=100'	X—X—X Fence Line	DRAWN BY: BAC
DATE: April 7, 1982	( ) Record Distance	REVISED
LOCATION: SW 1/4, Section 15, T. 36 S., R. 4 W. W.M. in Jackson County, Oregon		
• Monument Found as Noted	DRAWING NUMBER	
o 5/8" x 30" Steel Pin with Plastic Cap Set		

SURVEY NUMBER 9271

SURVEY NARRATIVE TO COMPLY WITH PARAGRAPH 209.250, OREGON REVISED STATUTES.

SURVEY FOR: Parnell Giesen  
524 Third St.  
Rogue River, Or. 97537

LOCATION: In the SW 1/4 of Section 15, T. 36 S., R. 4 W. W.M. in Jackson County, Oregon.

PURPOSE: To locate and monument the property boundaries of Tax Lots 300 and 400 as shown on the accompanying plat and described in Official Records.

PROCEDURE: Having tied to the SW corner of the Section, the S. 1/4 corner and the CW 1/16 corner in previous surveys, I now tie them to the Brass Cap marking the CS 1/16 corner and the two 5/8" steel pins set in R.S. 7438. I then calculate the position of the SW 1/16 corner and the property corners of the Giesen parcels as described in Official Records. I then set 5/8" x 30" steel pins, with yellow plastic caps stamped "DW EDWARDS-LS 741" attached, as shown on the accompanying plat.

BASIS OF BEARINGS: R.S. 7679

EQUIPMENT: Lietz TM 20-C theodolite and Lietz RED-1 EDM.

DATE COMPLETED: April 7, 1982.

Darrel W. Edwards  
98 Pine-P.O. Box 801  
Rogue River, Or. 97537  
Tel: 582-3110

