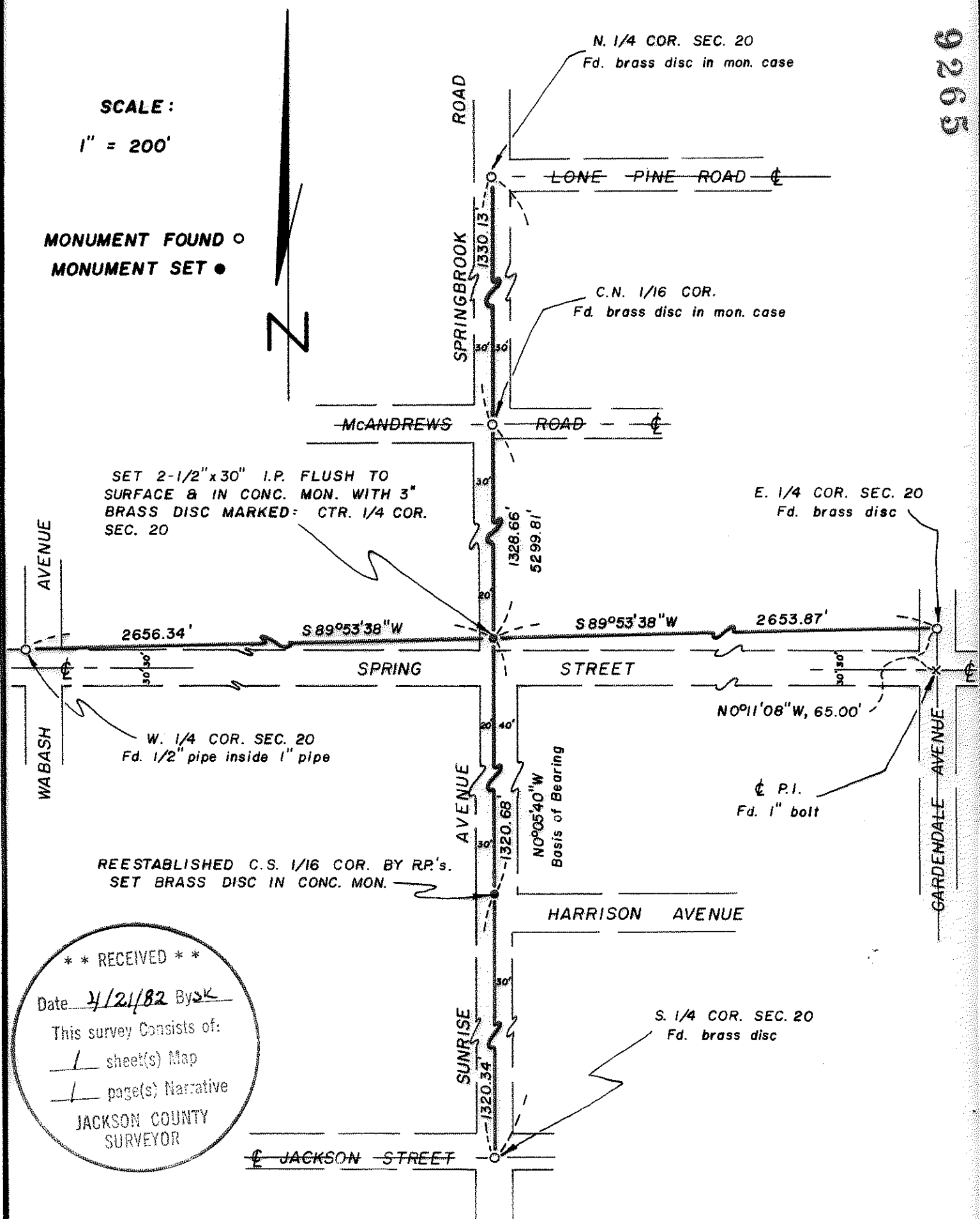


9265

SCALE:
1" = 200'

MONUMENT FOUND ○
MONUMENT SET ●



SET 2-1/2" x 30" I.P. FLUSH TO SURFACE & IN CONC. MON. WITH 3" BRASS DISC MARKED: CTR. 1/4 COR. SEC. 20

E. 1/4 COR. SEC. 20
Fd. brass disc

W. 1/4 COR. SEC. 20
Fd. 1/2" pipe inside 1" pipe

REESTABLISHED C.S. 1/16 COR. BY RP.'s.
SET BRASS DISC IN CONC. MON.

¢ P.I.
Fd. 1" bolt

S. 1/4 COR. SEC. 20
Fd. brass disc

** RECEIVED **
Date 4/21/82 Bysk
This survey consists of:
1 sheet(s) Map
1 page(s) Narrative
JACKSON COUNTY
SURVEYOR

MAP OF SURVEY

LOCATED IN SEC. 20, T.37S. R.1W., WM., JACKSON COUNTY, OREGON
FOR THE CITY OF MEDFORD

REGISTERED
PROFESSIONAL
LAND SURVEYOR

C. Lind McBeth

OREGON
JAN. 12, 1962
C. LIND MCBETH
555

BY: C. LIND MCBETH

R.P. L.S. NO. 565

DECEMBER 28, 1981

BASIS OF BEARING R.S. 1313

9265

37 1W 20

9265

SURVEY FOR: City of Medford
City Hall
Medford Oregon

SURVEY BY: C. Lind McBeth LS #565
c/o City of Medford
City Hall
Medford, Oregon

DATE: April 8, 1982

BASIS OF BEARING: R.S. #1313

SURVEY LOCATION: Section 20, T37S, RLW, W. M., Jackson County, Oregon

PURPOSE OF SURVEY: To locate and monument the center 1/4 corner of said section.

SURVEY PROCEDURE: The following corners were located and identified:

W 1/4 corner section 20; a 1/2" pipe within a 1" iron pipe near the NW right-of-way intersection of Wabash and Spring Streets;

N 1/4 corner, a brass disc in a previously monumented case, at McAndrews and Springbrook;

S 1/4 corner, a brass disc in concrete near pavement surface at Jackson and Sunrise;

E 1/4 corner, a brass disc in concrete near the pavement surface 65 feet north of Spring and Gardendale Streets.

Having these corners, I was able to coordinate all four together and determine the bearings and distances of the North-South and East-West centerlines of Section 20. I then computed the bearing intersection of these lines for the true position of said center 1/4 corner.

This corner was then set and monumented as shown on the attached map.

Respectfully submitted,

C. Lind McBeth

