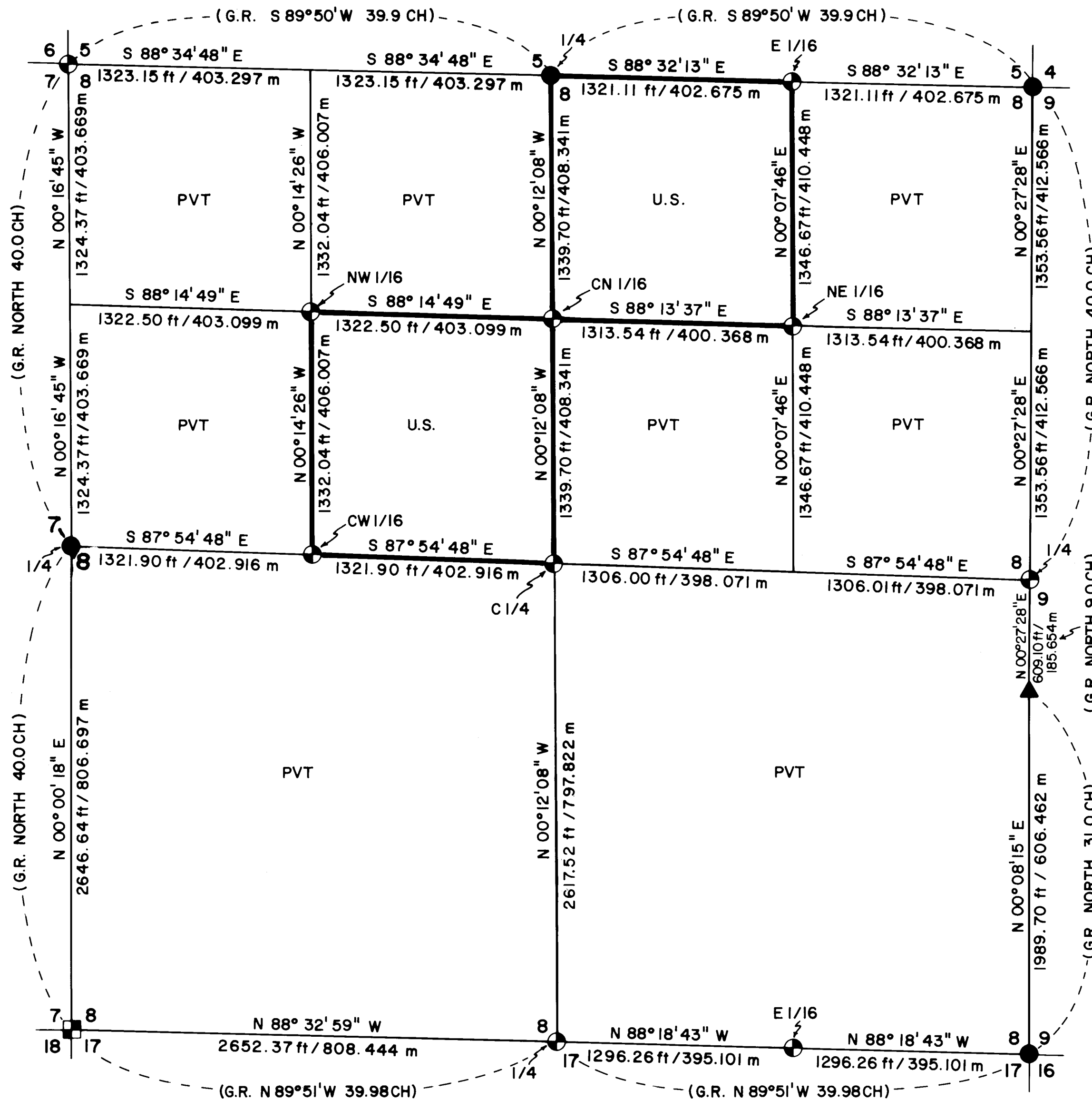


# MAP OF SURVEY FOR ROGUE RIVER NATIONAL FOREST P.O. BOX 520 MEDFORD, OREGON FEB. 25, 1982



### HISTORY OF SURVEYS

ORIGINAL LINES AND CORNERS WERE ESTABLISHED BY PETER APPLIGATE, U.S. DEPUTY SURVEYOR UNDER CONTRACT NO. 651 DATED APRIL 25, 1896.

VARIOUS CONTROLLING SECTION CORNERS WERE REMONUMENTED FROM ORIGINAL EVIDENCE BY THE JACKSON COUNTY SURVEYOR. THE SOUTHWEST AND NORTHWEST SECTION CORNERS WERE REMONUMENTED FROM ORIGINAL CORNER EVIDENCE BY ROBERT M. VINCENT, REGISTERED PROFESSIONAL LAND SURVEYOR NO. 583. (REF. RECORD SURVEYS NO. 2630 AND 2631)

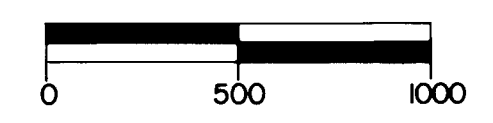
THE EAST LINE WAS RETRACED AND THE ONE-QUARTER CORNER COMMON TO SECTIONS 8 AND 9 REESTABLISHED BY LELAND P. LOVEJOY, REGISTERED PROFESSIONAL LAND SURVEYOR NO. 262. THIS CORNER WAS FURTHER PERPETUATED BY SURVEYOR VINCENT. (REF. RECORD SURVEYS NO. 843 AND 2739) THIS CORNER WAS NOT ACCEPTED FOR CONTROL AS PART OF THIS SURVEY AS SURVEYOR LOVEJOY FAILED TO LOCATE AND USE A LINE TREE OF RECORD ALONG THE COMMON LINE BETWEEN SECTIONS 8 AND 9.

UNRECORDED SURVEY MONUMENTS WERE RECOVERED AT THE EAST ONE-SIXTEENTH CORNERS SECTIONS 5 AND 8, 8 AND 17, AND AT INTERIOR CORNER POSITIONS WITHIN SECTION 8. THESE UNRECORDED MONUMENTS WERE ESTABLISHED AS PART OF SURVEYS PERFORMED BY SURVEYOR VINCENT. I.E. MONUMENTS AND WITNESS TREES WERE RECOVERED MARKED R.S. 583.

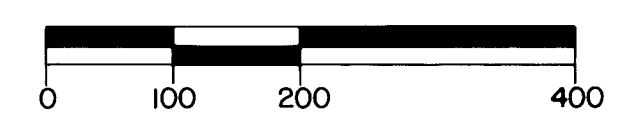
NO OTHER SURVEYS WERE NOTED.



BASIS OF BEARING—  
SOLAR OBSERVATION



SCALE IN FEET



SCALE IN METERS  
1 METER = 3.280833 FEET

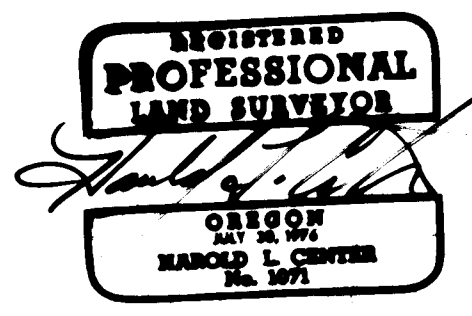
### LEGEND

- FOUND STANDARD BLM OR JACKSON COUNTY SURVEYOR BRASS CAP MONUMENT
- ⊕ SET 2 1/2" DIA X 30" LG IRON POST WITH 2 1/2" DIA BRASS CAP UNLESS OTHERWISE NOTED
- ▲ LINE TREE
- FOUND MONUMENT SET R.L.S. 583
- PROPERTY LINE ESTABLISHED AND POSTED THIS SURVEY
- SECTION LINE CALCULATED FROM TRAVERSE SURVEY
- SUBDIVISION LINE CALCULATED FROM TRAVERSE SURVEY

### CERTIFICATE OF SURVEY

I, HAROLD L. CENTER, REGISTRATION NO. 1071, REGISTERED PROFESSIONAL LAND SURVEYOR, STATE OF OREGON, HEREBY CERTIFY THAT THIS MAP ACCURATELY REPRESENTS A SURVEY MADE BY ME OR UNDER MY DIRECTION, IN CONFORMANCE WITH THE LAWS OF THE STATE OF OREGON, AT THE REQUEST OF THE U.S. FOREST SERVICE.

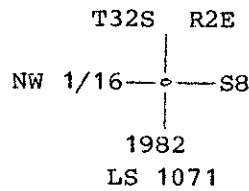
\*\* RECEIVED \*\*  
Date 3/31/82 By SK  
This survey consists of:  
1 sheet(s) Map  
8 page(s) Narrative  
JACKSON COUNTY  
SURVEYOR



U.S. DEPT. OF AGRICULTURE <b>FOREST SERVICE</b> REGION 6      ROGUE RIVER NATIONAL FOREST
<b>DEPENDENT RESURVEY AND SECTION SUBDIVISION</b> LOCATED IN <b>SEC. 8, T. 32S., R. 2E., W.M.</b> JACKSON COUNTY, OREGON
REVIEWED BY <u>W. M. Small</u> DATE <u>3/10/82</u> REVIEWED BY <u>R. S. ...</u> DATE <u>3/10/82</u>

8 32 21

At the corner point I set a 2 1/2-inch diameter, 30-inch long galvanized iron post with a 2 1/2-inch diameter brass cap marked:



From which the following references:

An 8-inch diameter cedar bears N 01° 07' W 72.75 feet distance, scribed NW 1/16 S8 LS 1071 BT.

An 8-inch diameter fir bears S 54° 57' E 37.94 feet distance, scribed NW 1/16 S8 LS 1071 BT.

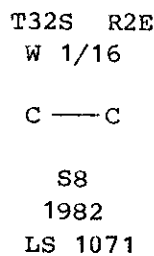
And the following unrecorded bearing trees:

A 14-inch diameter fir bears N 18° 43' W 16.60 feet distance, scribed RS 583 visible.

A 10-inch diameter fir bears S 80° 02' E 32.62 feet distance with a healed blaze.

Center-west one-sixteenth corner Section 8, Township 32 South, Range 2 East.

At the corner point I set a 2 1/2-inch diameter, 30-inch long galvanized iron post with a 2 1/2-inch diameter brass cap marked:



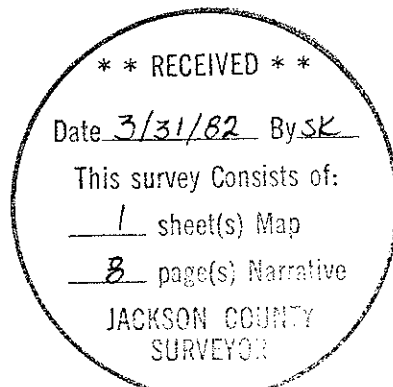
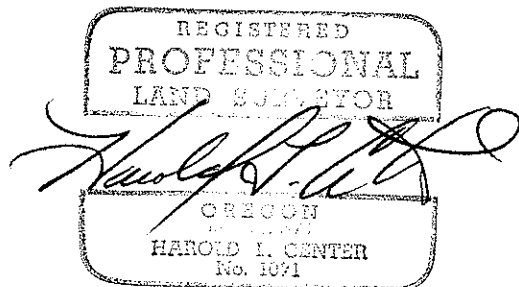
From which the following references:

A 9-inch diameter pine bears S 23° 24' E 12.80 feet distance, scribed SW 1/16 S8 LS 1071 BT.

A 9-inch diameter fir bears N 88° 39' E 20.40 feet distance, scribed CW 1/16 S8 LS 1071 BT.

February 25, 1982

HAROLD L. CENTER  
 Registered Profession Land Surveyor  
 Oregon Certificate No. 1071



At the corner point I set a 2½-inch diameter, 30-inch long galvanized iron post with a 2½-inch diameter brass cap marked:

T32S R2E  
C ¼  
"  
S8  
1982  
LS 1071

From which the following references:

An 11-inch diameter fir bears S 62° 58' E 24.62 feet distance, scribed C ¼ S8 LS 1071 BT.

An 8-inch diameter fir bears N 26° 25' W 38.65 feet distance, scribed C ¼ S8 LS 1071 BT.

Northeast one-sixteenth corner Section 8, Township 32 South, Range 2 East.

At the corner point I set a 2½-inch diameter, 30-inch long galvanized iron post with a 2½-inch diameter brass cap marked:

T32S R2E  
NE 1/16  
"  
S8  
1982  
LS 1071

From which the following references:

A 13-inch diameter cedar bears S 78° 26' E 148.20 feet distance, scribed NE 1/16 S8 LS 1071 BT.

A 39-inch diameter fir bears N 30° 03' W 59.40 feet distance, scribed NE 1/16 S8 LS 1071 BT.

Center-north one-sixteenth corner Section 8, Township 32 South, Range 2 East.

At the corner point I set a 2½-inch diameter, 30-inch long galvanized iron post with a 2½-inch diameter brass cap marked:

T32S R2E  
C  
N 1/16 | S8  
C  
1982  
LS 1071

From which the following references:

An 8-inch diameter fir bears N 88° 23' E 165.10 feet distance, scribed CN 1/16 S8 LS 1071 BT.

A 13-inch diameter fir bears S 28° 43' W 68.40 feet distance, scribed CN 1/16 S8 LS 1071 BT.

Northwest one-sixteenth corner Section 8, Township 32 South, Range 2 East.

At a proportional position on line between the recovered line tree and the section corner common to Sections 4, 5, 8 and 9, I set a 2½-inch diameter, 30-inch long galvanized iron post with a 2½-inch diameter brass cap marked:

T32S R2E  
    ¼  
S8 | S9  
    1982  
    LS 1071

From which the following references:

A 9-inch diameter fir bears N 58° 12' E 33.10 feet distance, scribed ¼ S9 LS 1071 BT.

A 10-inch diameter fir bears N 56° 50' W 27.20 feet distance, scribed ¼ S8 LS 1071 BT.

East one-sixteenth corner Sections 8 and 17, Township 32 South, Range 2 East.

At the corner point I set a 2½-inch diameter, 30-inch long galvanized iron post with a 2½-inch diameter brass cap marked:

T32S R2E  
E 1/16  $\frac{S8}{S17}$   
    1982  
    LS 1071

From which the following references:

A 23-inch diameter fir bears N 49° 53' E 25.05 feet distance, scribed E 1/16 S8 LS 1071 BT.

A 19-inch diameter fir bears S 59° 57' E 15.05 feet distance, scribed E 1/16 S17 LS 1071 BT.

East one-sixteenth corner common to Sections 5 and 8, Township 32 South, Range 2 East.

At the corner point I set a 2½-inch diameter, 30-inch long galvanized iron post with a 2½-inch diameter brass cap marked:

T32S R2E  
E 1/16  $\frac{S5}{S8}$   
    1982  
    LS 1071

From which the following references:

A 5-inch diameter fir bears S 61° 48' W 29.00 feet distance, scribed E 1/16 S 8 LS 1071 BT.

A 13-inch diameter fir bears N 60° 09' W 47.80 feet distance, scribed E 1/16 S 5 LS 1071 BT.

Center one-quarter corner Section, 8, Township 32 South, Range 2 East.

point marking the center of this tree now serves as a monument on the line between Sections 8 and 9, and serves as an angle point in the line. I monument this point with a 5/8-inch diameter 24-inch long iron pin driven to ground level at the point marked by the center of the tree. I attach a 1 1/2-inch diameter pot metal cap to the top of said iron pin and mark the cap as follows:

AP  
 |  
 S8    S9  
 |  
 1982  
 LS 1071

From which the following references:

A 9-inch diameter fir bears N 31° 45' W 21.60 feet distance, scribed AP S8 LS1071 BT.

A 7-inch diameter fir bears N 45° 15' E 41.80 feet distance, scribed AP S9 LS1071 BT.

Section corner common to Sections 8, 9, 16 and 17, Township 32 South, Range 2 East.

At the corner point I found a standard Jackson County Surveyor's brass cap monument marked:

T32S    R2E  
 |  
 S8    S9  
 ————  
 S17    S16  
 |  
 C.S.  
 1981

From which the following references:

A 10-inch diameter fir bears N 16° 51' E 18.90 feet distance, scribe CS-BT visible.

A broken, badly decayed fir, size indeterminate, bears N 56° 08' E 30.97 feet distance, no scribe remains.

A 10-inch diameter cedar bears S 55° 56' E 36.05 feet distance, scribe CS BT visible.

A broken, badly decayed fir, size indeterminate, bears S 45° 40' E 17.30 feet distance, no scribe remains.

An 8-inch diameter fir bears S 17° 11' W 23.50 feet distance, scribe CS-BT visible.

A 35-inch diameter fir bears S 85° 46' W 39.66 feet distance, partial scribe marks visible.

An 8-inch diameter fir bears N 80° 07' W 16.95 feet distance, scribe CS-BT visible.

A dead and down 36-inch diameter cedar, the root hole of which bears N 51° 22' W 25.00 feet distance, healed blaze remains on downed cedar.

CORNERS ESTABLISHED THIS SURVEY

One-quarter corner common to Sections 8 and 9, Township 32 South, Range 2 East.

One-quarter corner common to Sections 5 and 8, Township 32 South, Range 2 East.

At the corner point I found a standard Jackson County Surveyor brass cap monument marked:

T32S R2E

$\frac{1}{4} \frac{5}{8}$

Jackson County 1974

From which the following references:

An 8-inch diameter fir bears N 37° 10' W 20.50 feet distance with a healed blaze.

A 27-inch diameter cedar bears S 25° 53' E 33.99 feet distance, scribe CS-BT visible.

A 38-inch diameter cedar bears S 64° 58' W 4.70 feet distance, scribe  $\frac{1}{4}$  S BT visible.

Section corner common to Sections 4, 5, 8 and 9, Township 32 South, Range 2 East.

At the corner point I found a standard Jackson County Surveyor's brass cap monument marked:

T32S R2E

5	4
8	9

C.S.  
1981

From which the following references:

An 11-inch diameter fir bears S 56° 38' E 68.80 feet distance with a healed blaze.

An 8-inch diameter madrone bears S 19° 10' W 51.20 feet distance, scribe CS-BT visible.

A 16-inch diameter broken fir snag bears S 41° 33' W 33.30 feet distance, scribe T32S R2E S8 visible.

A 14-inch diameter fir bears N 58° 33' W 24.20 feet distance with a healed blaze.

A 26-inch diameter fir stump bears N 37° 06' E 49.20 feet distance, scribe BT visible.

A 7-inch diameter fir bears N 75° 23' E 65.90 feet distance, scribe CS-BT visible.

Line tree on the line between Sections 8 and 9, Township 32 South, Range 2 East.

At a point N 00° 08' 15" E 1989.70 feet distance from the section corner common to Sections 8, 9, 16 and 17, I found a 48-inch diameter cedar with 2 definite notches on the south face of the tree; the north face has been burned and the notches destroyed. This tree has been sawed down as part of logging within the area. The detached portion of the tree lies to the southeast of stump. I accept this tree as the original line tree and the

A 16-inch diameter fir bears S 46° 12' W 35.90 feet distance with a healed blaze.

A 11-inch diameter cedar bears N 30° 38' W 16.50 feet distance, scribe RS 583 BT visible.

A 18-inch diameter fir bears N 51° 45' E 9.40 feet distance with a healed blaze.

A 14-inch diameter fir bears S 71° 52' E 21.60 feet distance with a healed blaze.

One-quarter corner common to Sections 7 and 8, Township 32 South, Range 2 East.

At the corner point I found a standard Jackson County Surveyor brass cap monument marked:

Jackson County 1981  
T32S R2E  
1/4 S7 | S8

From which the following references:

A 12-inch diameter fir bears N 79° 46' W 72.60 feet distance, scribe CS - BT visible.

A 24-inch diameter fir bears N 70° 43' W 34.10 feet distance. No scribe marks visible.

An 11-inch diameter yew bears N 38° 25' E 43.70 feet distance, scribe CS - BT visible.

Section corner common to Sections 5, 6, 7 and 8, Township 32 South, Range 2 East.

At the corner point I found a 1 1/4-inch diameter iron post as established by Robert M. Vincent, Registered Professional Land Surveyor No. 583, to perpetuate the original corner point (reference Record Survey No. 2630). In the top of said iron post I cemented a 2 1/2-inch diameter brass disk marked:

T32S R2E  
S6 | S5  
-----  
S7 | S8  
1982  
LS 1071

From which the following references:

An 8-inch diameter oak bears N 21° 16' E 28.00 feet distance with a healed blaze.

A 6-inch diameter oak bears S 33° 28' E 29.80 feet distance with a healed blaze.

A 9-inch diameter cedar bears S 13° 35' W 9.30 feet distance, scribe S8 visible.

An 11-inch diameter oak bears N 28° 27' W 23.10 feet distance, scribe visible.

An 8-inch diameter oak bears N 22° 40' W 25.50 feet distance with a healed blaze.

A traverse was then ran along the interior lines closing to my original control traverse. From this information, corner points were established and lines posted utilizing aluminum posts with National Forest boundary signs attached. Trees along the true lines were blazed and painted with red timber marking paint.

This survey was performed utilizing a Wild T-2E Theodolite and Hewlett-Packard 3808A Electronic Distance Meter. This narrative accompanies a map of survey consisting of 1 sheet and by reference becomes a part of this document.

Corners Accepted For Control

One-quarter corner common to Sections 8 and 17, Township 32 South, Range 2 East.

At the corner point I found a 1-inch inside diameter iron post as set by the Jackson County Surveyor in October 1959. Directly over said iron post, I set a 2½-inch diameter 30-inch long galvanized iron post with 2½-inch diameter brass cap marked:

T32S R2E

¼  $\frac{S8}{S17}$

1982  
LS 1071

From which the following references:

A 7-inch diameter oak bears N 09° 18' W 45.40 feet distance with a healed blaze.

A 9-inch diameter oak N 51° 43' E 32.40 feet distance with a healed blaze.

New reference marked this survey:

A 8-inch diameter pine bears S 01° 18' E 231.80 feet distance, scribed ¼ S17 LS 1071 BT.

Section corner common to Sections 7, 8, 17 and 18, Township 32 South, Range 2 East.

At the corner point I found a 1-inch diameter iron post with a 1½-inch diameter pipe expander filled with pot metal established by Robert M. Vincent, Registered Professional Land Surveyor No. 583 (reference Record Survey No. 2737). The top of said monument marked:

1964  
T32S R2E  
S7 | S8  
-----  
S18 | S17  
SEC | COR  
RS 583

From which the following references:

A fir root hole size indeterminate bears S 33° 43' W 50.50 feet distance. Partial remains of scribe marks found.



SURVEY NARRATIVE TO COMPLY WITH  
SECTION 209.250 OREGON REVISED STATUTES

SURVEY FOR: Rogue River National Forest  
P. O. Box 520  
Medford, OR 97501

LOCATION: Section 8, Township 32 South, Range 2 East,  
Willamette Meridian, Jackson County, Oregon.

BASIS OF BEARING: Solar observation.

PURPOSE OF SURVEY: To establish property corners and mark and post  
National Forest boundaries.

PROCEDURE: I began this survey with an investigation of  
controlling corners required for subdivision of  
this section. The south, west and north one-  
quarter corners and the northeast and southeast  
section corners had been remonumented from original  
corner evidence by the Jackson County Surveyor.  
The northwest and southwest section corners had  
been remonumented from original corner evidence by  
Robert N. Vincent, Registered Professional Land  
Surveyor No. 583.

The east one-quarter corner was reestablished by  
proportional measurement by Leland P. Lovejoy,  
Registered Professional Land Surveyor No. 262.  
(Reference Record Survey No. 843.) Utilizing this  
corner control I began my survey at the south one-  
quarter corner and performed a closed traverse  
around the perimeter of Section 8 tying the above  
corner control. As the east one-quarter corner had  
been restored by proportional measurement,  
topography along the east line was tied and corre-  
lated with the topography called for in the origi-  
nal record. In addition, a search was made for the  
line tree as called for within the original record.  
(Record call at 31.00 chains-2046.0 feet north of  
the southeast section corner.)

At a point north  $00^{\circ} 08' 15''$  east, 1989.70 feet  
from the southeast section corner, I recovered a  
48-inch diameter cedar with 2 notches on the south  
face of the tree. The north face of the tree has  
been burned and no evidence of the notches on the  
north face of this tree remained. A comparison of  
other topography calls further verified this to be  
the line tree called for within the original  
record. This tree is now a sawed stump with  
detached portion of tree lying in a southeast  
direction. I accept this tree as the original line  
tree and monument this point as an angle point.  
Utilizing the recovered line tree and the northeast  
section corner, search areas were determined for  
the missing one-quarter corner. An extensive  
search for the missing corner was made without suc-  
cess. The area has been extensively logged and I  
was unable to locate trees of the correct species  
or suitable age (110 yrs.). As I was unable to  
locate any evidence of the original corner, I  
reestablish this corner by proportional measurement  
using the recovered line tree and northeast section  
corner.