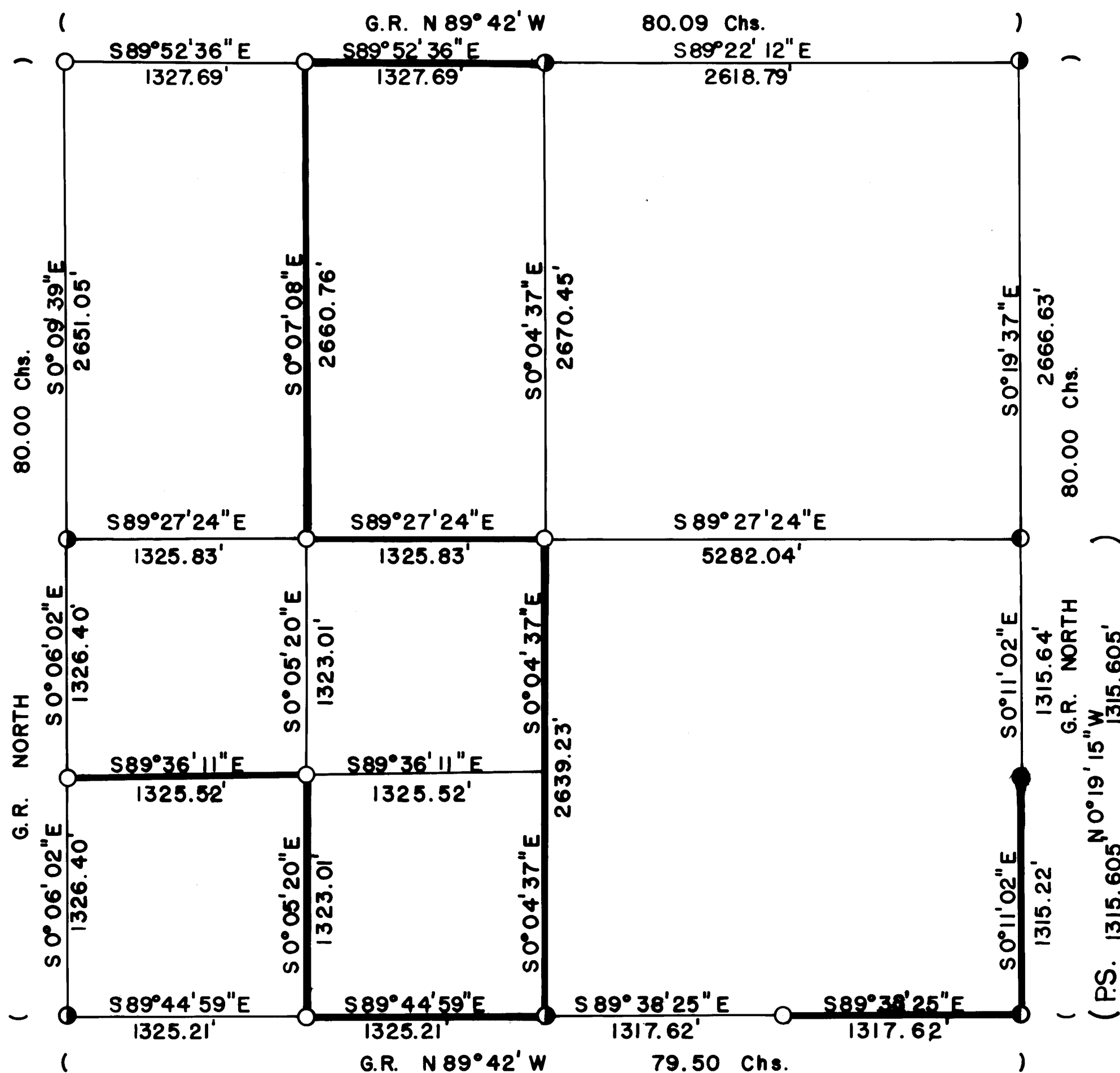
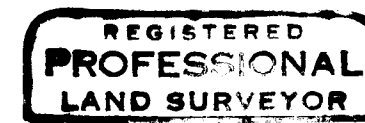


S25 T34S R1E W.M.

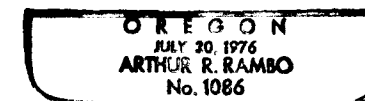


CERTIFICATE OF SURVEY

I, ARTHUR R. RAMBO, REGISTRATION No. 1086 REGISTERED PROFESSIONAL LAND SURVEYOR STATE OF OREGON, HEREBY CERTIFY THAT THIS MAP CORRECTLY REPRESENTS A SURVEY MADE BY ME OR UNDER MY DIRECTION IN CONFORMANCE WITH THE LAWS OF THE STATE OF OREGON.



Arthur R. Rambo



LEGEND

- FOUND STANDARD B.L.M. MONUMENT
- FOUND COUNTY MONUMENT
- FOUND 3/4" REBAR SET SURVEY No. 4459
- SET 5/8" BY 30" REBAR WITH 1 1/2" ALUM. CAP
- G.R. 1855 GOVERNMENT RECORD
- P.S. PRIVATE SURVEY No. 4459
- LINE POSTED AND BLAZED THIS SURVEY

BASIS OF BEARING

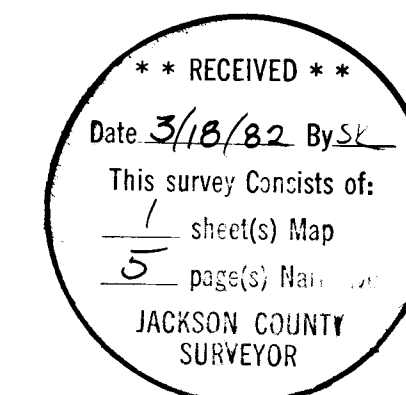
SURVEY No. 9205

SCALE

1" = 600'

DATE

MARCH 11, 1982



9226

From which:

A 10 inch dia. Oak bears N86°05'W 73.7 ft. marked
SW 1/16 S25 BT
A 16½ inch dia. Pine bears N52°22'E 18.2 ft. marked
SW 1/16 S25 BT

South one sixteenth corner common to Section 25 and
26 Township 34 South Range 1 East. At the corner
location I set a 5/8 by 30 inch rebar with a 1½ inch
dia. aluminum cap marked:

LS 1086
S 1/16
S26 + S25
T34S R1E

From which:

A 17 inch dia. Pine bears N68°29'E 120.2 ft. marked
S 1/16 S25 BT
A 9 inch dia. Oak bears N79°09'W 23.8 ft. marked
S 1/16 S26 BT

REGISTERED
PROFESSIONAL
LAND SURVEYOR

Arthur R. Rambo

OREGON
JULY 30, 1976
ARTHUR R. RAMBO
No. 1086

** RECEIVED **
Date 3/18/82 By SK
This survey Consists of:
1 sheet(s) Map
5 page(s) Narrative
JACKSON COUNTY
SURVEYOR

9226

Centerwest one sixteenth corner Section 25 Township 34 South Range 1 East. At the corner location I set a 5/8 by 30 inch rebar with a 1½ inch dia. aluminum cap marked:

LS 1086
CW
1/16+S25
T34S R1E

From which:

A 6 inch dia. Oak bears S20°05'E 25.3 ft. marked
CW 1/16 S25 BT
A 7 inch dia. Pine bears N58°21'E 24.9 ft. marked
CW 1/16 S25 BT

Center one quarter corner Section 25 Township 34 South Range 1 East. At the corner location I set a 5/8 by 30 inch rebar with aluminum cap marked:

LS 1086
C½ + S25
T34S R1E

From which:

A 20 inch dia. Pine bears N0°33'W 26.0 ft. marked
C¼ S25 BT
An 11 inch dia. Fir bears S39°36'W 35.8 ft. marked
C¼ S25 BT

East one sixteenth corner common to Section 25 and 36 Township 34 South Range 1 East. At the corner location I set a 5/8 by 30 inch rebar with 1½ inch dia. aluminum cap marked:

LS 1086
S25
E 1/16 +
S36
T34S R1E

From which:

An 11½ inch dia. Oak bears S86°15'W 28.2 ft. marked
E 1/16 S36 BT
A 9 inch dia. Cedar bears N8°57'W 30.7 ft. marked
E 1/16 S25 BT

West one sixteenth corner common to Section 25 and 36 Township 34 South Range 1 East. At the corner location I set a 5/8 by 30 inch rebar with a 1½ inch aluminum cap marked:

LS 1086
S25
W 1/16 +
S36
T34S R1E

From which:

A 9½ inch dia. Oak bears S45°27'E 22.7 ft. marked
W 1/16 S36 BT
A 6 inch dia. Oak bears N 41°38'W 23.8 ft. marked
W 1/16 S25 BT

Southwest one sixteenth corner Section 25 Township 34 South Range 1 East. At the corner location I set a 5/8 by 30 inch rebar exposed 12 inches in a mound of stone with a 1½ inch dia. aluminum cap marked:

LS 1086
S25
SW + 1/16
T34S R1E

9226

One quarter corner common to Section 25 Township 34 South Range 1 East and Section 30 Township 34 South Range 2 East. At the corner location I found a Bureau of Land Management monument 3 inch dia, brass cap marked:

T34S
 $\frac{1}{4}$
 R1E | R2E
 S25 | S30
 1968

From which:

A 22 inch dia. Fir bears S43°58'E 59.4 ft, unopened
 A 19 inch dia. Pine stump bears S45°08'W 19.1 ft, burned face no scribe visible
 A 19 inch dia. Fir bears N60°07'W 17.2 ft, unopened
 A 22 inch dia. Pine bears N48°4'E 35.6 ft, scribes visible in chopped out face

Section corner common to Section 24 and 25 Township 34 South Range 1 East and Section 19 and 30 Township 34 South Range 2 East. At the corner location I found a Jackson County monument 2 inch dia. G.I. pipe exposed 2½ inches

From which:

A 15 inch dia. Fir bears S77°30'W 38.0 ft, marked CS
 A 52 inch dia. Cedar stump bears N11°00'W 67.5 ft, unopened
 a 24 inch dia. Oak stub bears N9°12'E 51.8 ft, unopened
 a 21 inch dia. Oak bears S42°00'E 74.1 ft, unopened

One quarter corner common to Section 24 and 25 Township 34 South Range 1 East. At the corner location I found a Jackson County monument 2½ inch dia bronze disc exposed 5½ inches marked:

T34S R1E
 $\frac{1}{4}$ S $\frac{24}{25}$
 CS
 1973

From which:

A 26½ inch dia. Fir bears N60°08'W 12.5 ft, scribes visible in chopped out face
 A 20 inch dia. Fir bears N6°13'E 41.8 ft, scribe visible in partially healed face
 A 13½ inch dia. Cedar bears S7°35'W 41.6 ft, scribe visible in partially healed face

Corners set this survey:

Measurements to trees are to center of tree at lower face unless otherwise stated. A 1 inch dia. brass washer marked LS 1086 is nailed to the lower face of bearing trees.

West one sixteenth corner common to Section 24 and 25 Township 34 South Range 1 East. At the corner location I set a 5/8 by 30 inch rebar with 1½ inch aluminum cap marked:

LS 1086
 S24
 W 1/16 +
 S25
 T34S R1E

From which:

A 9 inch dia. Fir bears S50°16'E 21.6 ft, marked W 1/16
 S25 BT
 A 7½ inch dia. Fir bears N7°08'W 25.4 ft, marked W 1/16
 S24 BT

From which:

A 14 inch dia, Cedar bears N34°12'W 122,2 ft. marked
CS BT
A 10½ inch dia, Cedar bears S88°05'E 73,7 ft. marked
CS BT

Section corner common to Section 25, 26, 35, and 36
Township 34 South Range 1 East. At the corner location
I found a 1 inch dia, plastic cap inside a 2 inch dia,
pipe 6 inches deep under a 5x10x12 inch rock marked with
an X. Plastic cap is marked;

JACKSON
COUNTY

From which:

An 11½ inch dia, Oak bears N46°10'W 84.4 ft. unopened
A 13½ inch dia. Oak bears N40°18'E 164,9 ft.
Foundation of Northwest corner of house bears S0°32'E
74,8 ft.
Foundation of Southwest corner of house bears S8°59'W
105,5 ft.

One quarter corner common to Section 25 and 36 Town-
ship 34 South Range 1 East. At the corner location I
found a Jackson County monument 2½ inch dia, bronze
disc marked;

JACKSON COUNTY
T34S R1E
25
¼S ——— 1978
36

From which:

A 15 inch dia, Cedar bears S52°16'W 13,9 ft, marked
CS BT
A 12½ inch dia, Pine bears N35°25'W 32,8 ft, marked
CS BT

Section corner common to Section 25 and 36 Township
34 South Range 1 East and Section 30 and 31 Township
34 South Range 2 East. At the corner location I
found a Bureau of Land Management monument 3 inch
dia, brass cap marked;

T34S
R1E | R2E
S25 | S30
S36 | S31
1968

From which:

A 36 inch dia, Fir bears N12°41'W 49,1 ft, no scribe
visible in chopped out face
A 7 inch dia, Cedar bears N24°37'E 9,6 ft, scribe
visible in partially healed face
A 16 inch dia, Fir bears S10°25'E 39,6 ft, unopened
A 17 inch dia, stump bears S54°23'W 56,8 ft, marked BT
An 8 inch dia, Cedar bears S88°05'W 21,8 ft, scribes
visible in partially healed face
A 22 inch dia, Oak bears S30°52'E 12,8 ft, unopened

South one sixteenth corner common to Section 25 Town-
ship 34 South Range 1 East and Section 30 Township 34
South Range 2 East. At the corner location I found
a 3/4 inch dia, rebar exposed 3½ inches

From which:

An 11 inch dia, Fir bears S23°22'E 21,3 ft, unopened
An 8 inch dia, Fir bears S59°10'W 8,4 ft, scribes
visible in partially healed face

9226

Survey Narrative to Comply with Paragraph 209,250 O.R.S.

Survey For: Medford Resources Corporation
P. O. Box 550
Medford, Oregon 97501

Survey By: Arthur R. Rambo LS 1086
331 Bluff Street
Butte Falls, Oregon 97522

Location: Section 25 Township 34 South Range 1 East Willamette Meridian,
Jackson County, Oregon

Date: March 11, 1982

Basis of Bearing: Survey No, 9205

Purpose: To set monuments and mark the boundary lines of Medford Resources Corporation lands in this section.

Procedure: I ran a random line closed traverse survey around the exterior of the section tying to the corners needed for control of this survey. The original survey was completed by Ives and Hyde under contract No. 47 dated August 18, 1854. Except for the Northwest section corner all corners needed for control of this survey have been re-established by the Jackson County Surveyor or the Bureau of Land Management, Cadastral Division. The Northwest corner was set by double proportionate measurement under survey No, 9205. The South one sixteenth corner common to Section 25 Township 34 South Range 1 East and Section 30 Township 34 South Range 2 East was set by Charlie Hurst under survey No, 4459.

After the exterior lines were closed, the subdivision of the section was calculated, and the boundary lines were monumented and marked as shown on the plat to accompany this report,

Corners accepted for control of this survey:

Measurements to all trees are to the center of tree at the stump unless otherwise stated.

Section corner common to Section 23,24, 25, and 26 Township 34 South Range 1 East. At the corner location I found a 1½ inch dia. aluminum cap buried 6 inches under road marked:

LS1086
S23 S24
S26 S25
T34S R1E

From which:

An 11 inch dia, Fir bears S39°27'E 38.8 ft. marked
S25 BT

A 12 inch dia, Oak bears S68°53'W 151.4 ft. marked
S26 BT

An 11½ inch dia. Pine bears N27°52'W 85.8 ft. marked
S23 BT

A 21 inch dia, Oak bears N16°30'E 86.9 ft. marked
S24 BT

One quarter corner common to Section 25 and 26 Township 34 South Range 1 East. At the corner location I found a Jackson County monument 2½ inch dia. bronze disc marked:

JACKSON COUNTY
T34S R1E
¼ S
26 25
1977