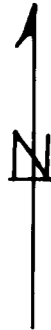
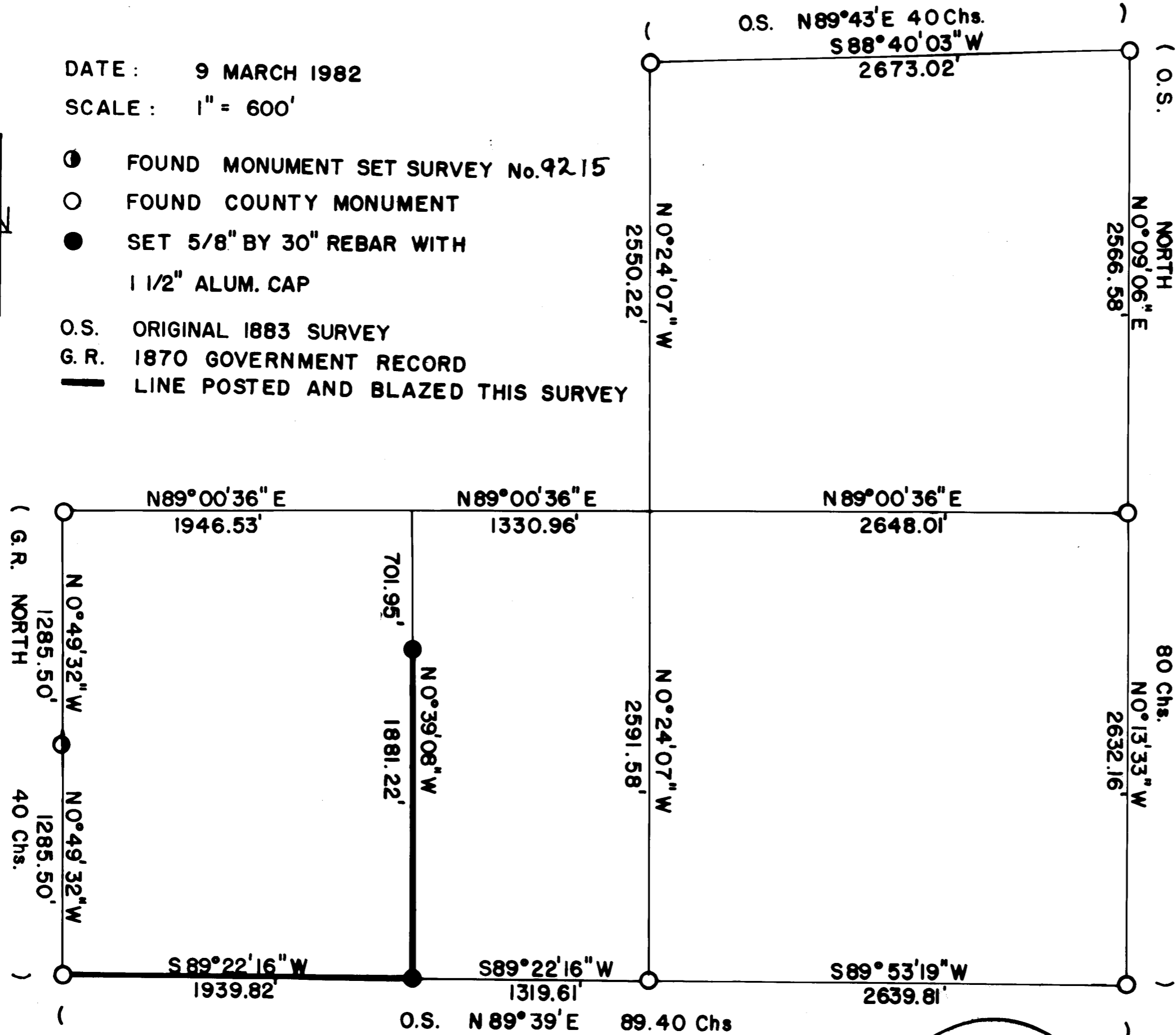


S7 T33S R3E W.M.

DATE: 9 MARCH 1982  
SCALE: 1" = 600'



- FOUND MONUMENT SET SURVEY No. 9215
- FOUND COUNTY MONUMENT
- SET 5/8" BY 30" REBAR WITH 1 1/2" ALUM. CAP
- O.S. ORIGINAL 1883 SURVEY
- G.R. 1870 GOVERNMENT RECORD
- LINE POSTED AND BLAZED THIS SURVEY



**\*\* RECEIVED \*\***  
 Date: 3/18/82 By SK  
 This survey consists of:  
1 sheet(s) Map  
3 page(s) Narrative  
 JACKSON COUNTY SURVEYOR

REGISTERED  
**PROFESSIONAL  
 LAND SURVEYOR**  
*Arthur R. Rambo*  
 OREGON  
 JULY 30, 1976  
 ARTHUR R. RAMBO  
 No. 1086

9225

9225

One quarter corner common to Section 7 and 18 Township 33 South Range 3 East. At the corner location I found a 2½ inch dia. G.I. pipe marked:

S1S  
OCDWM  
LS

From which:

- A 9½ inch dia. Fir bears S 64°50'W 11.8 ft. marked CS BT
- A 14 inch dia. Fir bears N17°19'E 10.7 ft. marked CS BT
- A 37 inch dia. Fir bears S4°22'E 36.3 ft. unopened

South one sixteenth corner common to Section 12 Township 33 South Range 2 East, and Section 7 Township 33 South Range 3 East. At the corner location I found a 1½ inch dia. aluminum cap on a 5/8 inch dia. rebar marked:

LS 1086  
S 1/16  
S12 + S7  
R2E R3E  
T33S

From which:

- A 21 inch dia. Fir bears S32°W 9.6 ft. marked S 1/16 S12 BT
  - A 6½ inch dia. Fir bears N85°E 30.0 ft. marked S 1/16 S7 BT
- (bearings by staff compass)

Corners set this survey:

All measurements were to the center of tree at lower face unless otherwise stated. A 1 inch dia. brass washer marked LS 1086 is nailed to the lower face of each bearing tree.

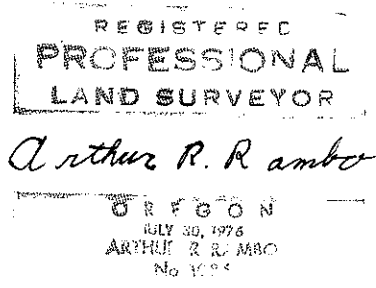
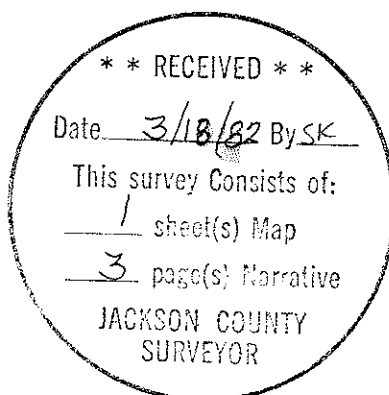
West one sixteenth corner common to Section 7 and 18 Township 33 South Range 3 East. At the corner location I set a 5/8 by 30 inch rebar with a 1½ inch dia. aluminum cap marked:

LS 1086  
S7  
W 1/16 +  
S18  
T33S R3E

From which:

- An 8 inch dia. Fir bears N67°20'W 14.9 ft. marked W 1/16 S7 in upper face BT in lower face
- A 6 inch dia. Fir bears S51°32'E 7.3 ft. marked W 1/16 S18 in upper face BT in lower face

I set a 5/8 by 30 inch rebar with 1½ inch dia. aluminum cap 6 feet South of the left bank of the South Fork of Rogue River. Said rebar is on the North-South Centerline of the Southwest quarter of Section 7, N0°39'08"W 1881.22 feet from the West one sixteenth corner common to Section 7 and 18.



One quarter corner common to Section 6 and 7 Township 33 South Range 3 East. At the corner location I found a 2½ inch dia. lead filled pipe reducer Jackson County monument marked:

1953  
T33S R3E  
6  
7  
1/4 Cor

From which:

A 26½ inch dia. Fir bears S80°26'E 53.0 ft. unopened  
A 26 inch dia. Fir bears N55°23'E 37.8 ft. unopened  
A down rotten Fir marked 4S bears N40°47'E 9.6 ft. to stump hole

Section corner common to Section 5, 6, 7, and 8 Township 33 South Range 3 East. At the corner location I found a 2½ inch dia. lead filled reducer Jackson county monument marked:

T33S R3E  
6  
5  
7  
18  
Sec Cor

From which:

A 2 inch dia. pipe against North side of monument  
A 14 inch dia. Hemlock bears S69°12'E 15.6 ft. unopened  
A 61 inch dia. Cedar bears N0°43'E 40.5 ft. marked CS  
in upper face BT in lower face  
A 25 inch dia. Fir bears N28°06'W 38.2 ft. unopened  
A 17½ inch Hemlock bears S86°50'W 18.5 ft. unopened

One quarter corner common to Section 7 and 8 Township 33 South Range 3 East. At the corner location I found a Jackson County monument 2½ inch dia. bronze disc marked:

JACKSON COUNTY  
T33S R3E  
1  
7  
18  
¼ S  
1980

From which:

A 16 inch dia. Fir bears N43°37'E 4.3 ft. marked S  
in opened upper face  
A 25½ inch dia. Fir bears N78°40'W 14.6 ft. unopened  
A 5 inch dia. Fir bears S70°51'E 15.8 ft. marked  
CS BT

Section corner common to Section 7, 8, 17, and 18 Township 33 South Range 3 East. At the corner location I found a 2½ inch dia. G.I. pipe exposed 11 inches marked:

S7 S8  
MEDJO  
S18 S17

From which:

A 6 inch dia. Madrona bears S39°26'W 41.4 ft.  
marked CS BT  
A 5 inch dia. Madrona bears S19°08'E 39.6 ft.  
marked CS BT  
A 4½ inch dia. Fir bears N29°12'E 9.0 ft. marked  
CS BT  
A 6 inch dia. Madrona bears N65°17'W 47.2 ft.  
marked CS BT

9225

Survey Narrative to Comply with  
Oregon Revised Statutes 209.250

Survey for: M. R. C.,  
P. O. Box 550  
Medford, Oregon 97501

Survey by: Arthur R. Rambo LS 1086  
P. O. Box 133  
Butte Falls, Oregon 97522

Location: Southwest 1/4 of Section 7 Township 33 South Range 3  
East Willamette Meridian

Date: March 9, 1982

Basis of Bearing: Survey No. 9215

Purpose: To monument and mark boundary lines of M. R. C. lands

Procedure: A search of the records revealed that the original survey of this section had been completed under two contracts. The West line was surveyed by Turner and Howard under contract No. 142, dated September 9, 1870. The North, East, and South lines were surveyed by Rufus Moore under contract No. 475, dated July 3, 1883. The original corners needed for this survey have been remonumented by the Jackson County Surveyor.

I ran a random line traverse tying in the corners needed for control of this survey, beginning and closing on a survey which I completed in Section 12 Township 33 South Range 2 East. The boundary lines needed were then computed and established as shown on the map to accompany this report.

Corners and accessories found and accepted:

All measurements to trees are to center of tree at lower face unless otherwise stated.

Section corner common to Section 12 and 13 Township 33 South Range 2 East and Section 7 and 18 Township 33 South Range 3 East. At the corner location I found a 2½ inch dia. bronze disc Jackson County monument marked:

T33S R2&3E  
12|7  
13|18  
Sec. Cor.  
CS 1961

From which:

An 18½ inch dia. Fir bears S35°02'W 53.1 ft. unopened  
A 20 inch dia. Fir bears S48°57'E 46.8 ft. unopened  
An 11½ inch dia. Fir bears N51°22'E 48.5 ft. unopened  
A 10 inch dia. Madrona bears N69°00'W 2.8 ft. unopened

One quarter corner common to Section 12 Township 33 South Range 2 East and Section 7 Township 33 South Range 3 East. At the corner location I found a 1½ inch dia. pipe.

From which:

A 9½ inch dia. Fir bears N44°15'W 12.4 ft. unopened  
A 10 inch dia. Cedar bears S67°04'E 6.9 ft. unopened