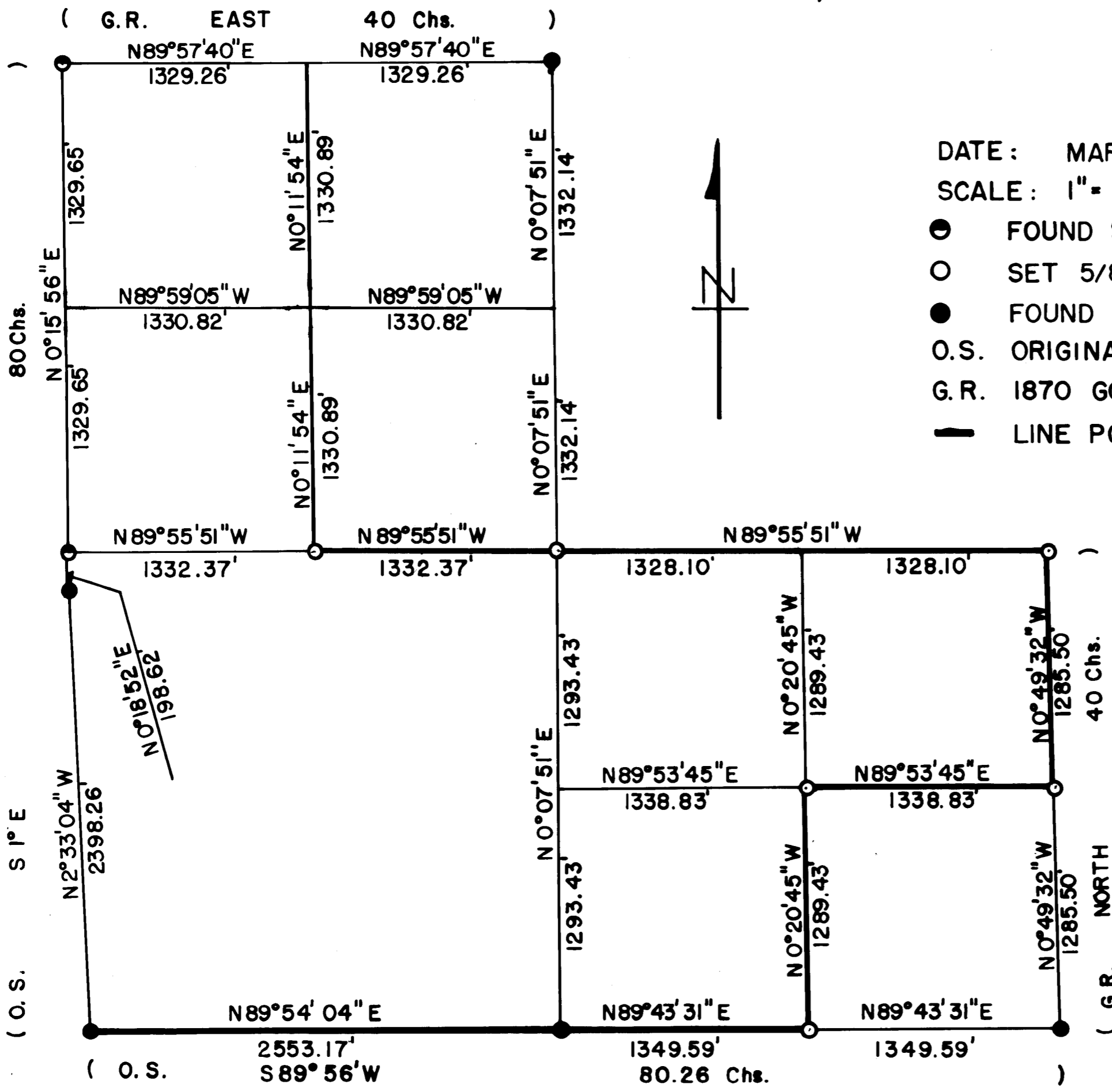


S12, T33S R2E W.M.



DATE: MARCH 1, 1982
 SCALE: 1" = 600'

- FOUND STANDARD B.L.M. BRASS CAP
- SET 5/8" BY 30" REBAR WITH ALUM. CAP
- FOUND COUNTY MONUMENTS
- O.S. ORIGINAL 1891 SURVEY
- G.R. 1870 GOVERNMENT RECORD
- LINE POSTED AND BLAZED THIS SURVEY



REGISTERED
 PROFESSIONAL
 LAND SURVEYOR
Arthur R. Rambo
 OREGON
 JULY 30, 1976
 ARTHUR R. RAMBO
 No. 1086

** RECEIVED **
 Date 3/3/82 By SK
 This survey Consists of:
1 sheet(s) Map
4 page(s) Narrative
 JACKSON COUNTY
 SURVEYOR

9215

South one-sixteenth corner common to Section 12 Township 33 South Range 2 East and Section 7 Township 33 South Range 1 East. At the corner location I set a 5/8 by 30" rebar with a 1 1/2 inch dia. aluminum cap marked:

LS 1086
S1/16
S12+S7
R2E R3E
T33S

From which:

A 21 inch dia. fir bears S32°W 9.6 ft. marked S 1/16
S12 upper face BT lower face
A 6 1/2 inch dia. fir bears N85°E 30.0 ft. marked S 1/16
S7 upper face BT lower face
(bearings by Staff Compass)

Center one-quarter corner Section 12 Township 33 South Range 2 East. At the corner location I set a 5/8 by 30 inch rebar with a 1 1/2 inch dia. aluminum cap marked:

LS 1086
S12
C 1/4 +
T33SR2E

From which:

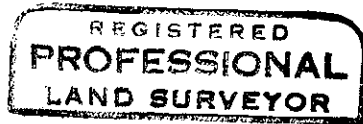
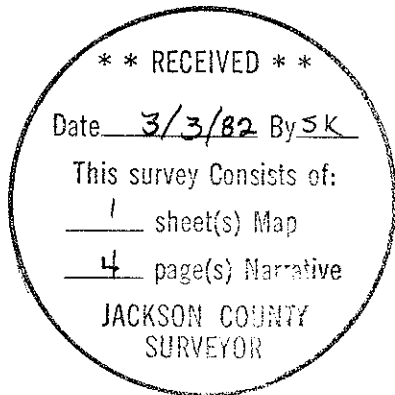
An 8 inch dia. Madrona bears S71°03'E 34.9 ft. marked
C 1/4 S12 upper face BT lower face
A 6 1/2 inch dia. Madrona bears N11°10'W 26.1 ft. marked
C 1/4 S12 upper face BT lower face

Centerwest one-sixteenth corner Section 12 Township 33 South Range 2 East. At the corner location I set a 5/8 by 30 inch rebar with a 1 1/2 inch dia. aluminum cap marked:

LS 1086
S12
CW1/16 +
T33SR2E

From which:

A 7 1/2 inch dia. fir bears N80°31'E 33.3 ft. marked
CW 1/16 S12 upper face BT lower face
A 5 1/2 inch dia. fir bears N83°28'W 20.6 ft. marked
CW 1/16 S12 upper face BT lower face



Arthur R. Rambo



Section corner common to Section 1, 2, 11, and 12
Township 33 South Range 2 East. At the corner location
buried 5 inches under the road surface I found a stand-
ard Bureau of Land Management monument marked:

T33S R2E
211
11112
1971

From which:

A 12 inch dia. cedar snag bears $N27^{\circ}35'W$ 30.6 feet unopened
Found Jackson County references, set flush yellow plastic
caps marked JACKSON C.S.
1) $N41^{\circ}31'W$ 29.5 feet
2) $N47^{\circ}03'E$ 32.8 feet
3) $S41^{\circ}26'E$ 26.2 feet
4) $S47^{\circ}05'W$ 26.0 feet

One-quarter corner common to Section 1 and 12 Township 33
South Range 2 East. At the corner location I found a 1 in.
dia. pipe 8 inches below ground surface

From which:

A 40 inch dia. cedar snag bears $S33^{\circ}28'E$ 49.6 ft. marked
CS in upper face
A 47 inch dia. cedar bears $N5^{\circ}20'W$ 89.6 ft. marked 4S in
upper face
A 13 inch dia. fir bears $S57^{\circ}53'W$ 37.2 ft. marked CS BT

One quarter corner common to Section 12 Township 33 South
Range 2 East and Section 7 Township 33 South Range 1 East.
At the corner location I found a $1\frac{1}{2}$ inch dia. pipe

From which:

A $9\frac{1}{2}$ inch dia. fir bears $N44^{\circ}15'W$ 12.4 ft. unopened
A 10 inch dia. cedar bears $S67^{\circ}04'E$ 6.9 ft. unopened

Corners set this survey: All measurements are to the center of the tree
at lower face unless otherwise stated. A 1 inch dia. brass washer marked
LS 1086 is nailed to the lower face of each bearing tree.

East one-sixteenth corner common to Section 12 and 13
Township 33 South Range 2 East. At the corner location
I set a $\frac{5}{8}$ by 30 inch rebar with a $1\frac{1}{2}$ inch dia. aluminum
cap marked:

LS 1086
E 1/16 $\begin{matrix} \text{LS12} \\ \text{S13} \end{matrix}$
T33S R2E

From which:

A 12 inch dia. fir bears $N73^{\circ}28'E$ 7.8 ft. marked E 1/16
S12, in upper face BT in lower face
A 14 inch dia. fir bears $S26^{\circ}22'W$ 6.9 ft. marked E 1/16
S 13, in upper face BT in lower face

Southeast one sixteenth corner Section 12 Township 33
South Range 2 East. At the corner location I set a
 $\frac{5}{8}$ by 30 inch rebar with a $1\frac{1}{2}$ inch dia. aluminum cap
marked:

LS 1086
S12
SE1/16 +
T33S R2E

From which:

A 5 inch dia. fir bears $S14^{\circ}45'W$ 27.6 ft. marked X in
upper face BT in lower face
A 14 inch dia. fir bears $S25^{\circ}37'E$ 44.2 ft. marked
SE 1/16 S12 in upper face BT in lower face

One-quarter corner common to Section 12 and 13 Township 33 South Range 2 East. At the corner location I found a 2½ inch dia. bronze disc Jackson County monument marked:

Jackson County
1979
T33S R2E
12
1
¼ S — | —
13

From which:

- An 8 inch dia. fir bears N64°49'E 33.6 feet marked CS BT
- An 8½ inch dia. cedar bears S48°16'E 55.9 ft. marked CS BT
- A 17½ inch dia. Madrona bears N30°32'E 35.1 ft. upper face unopened lower face rotted out
- A 21½ inch dia. fir bears S71°13'E 30.4 ft. marked ¼ in upper face BT in lower face

Section corner common to Sections 11, 12, 13 and 14 Township 33 South Range 2 East. At the corner location I found a 2½ inch dia. bronze disc County monument marked:

T33S R2E
11 | 12
Sec. 14 | 13 Cor.
C.S.
1971

with a stone, marked with 4 notches on the west side, lying on the South side of monument

From which:

- A 44 inch dia. fir stub bears N69°07'W 23.5 feet unopened
- An 18 inch dia. fir bears N58°05'W 30.4 ft. unopened
- A 20 inch dia. dead fir bears S51°26'W 20.5 ft. unopened
- A 16½ inch dia. fir bears N20°53'E 24.1 ft. unopened
- A 15 inch dia. fir bears S85°00'E 28.2 ft. marked CS BT

One-quarter witness corner common to Section 11 and 12 Township 33 South Range 2 East. At the witness corner location I found a one inch pipe with lead filled reducer marked:

T33S R2E
11 + 12
Witness Cor.
1954

From which:

- An 8 inch dia. fir bears S64°47'E 24.5 ft. unopened
- A 5 inch dia. fir bears S12°28'W 20.2 ft. marked CS in upper face BT in lower face
- A 44" inch fir stub bears S82°16'E 24.3 ft. marked partial bark scribe visible

One-quarter corner common to Section 11 and 12 Township 33 South Range 2 East. At the corner location I found a standard Bureau of Land Management monument marked:

T33S R2E
¼
S11 | S12
1974

From which:

- A 14 inch dia. fir bears S83°20'W 19.4 ft. scribes visible in partially healed face
- An 8½ inch dia. fir bears S64°13'E 12.0 ft. scribes in partially healed face

9215

Survey Narrative to Comply with Paragraph 209.250
Oregon Revised Statutes

Survey for: Medford Resources Corporation
P. O. Box 550
Medford, Oregon 97501

Survey by: Arthur R. Rambo LS-1086
331 Bluff Street
Butte Falls, Oregon 97522

Location: Section 12 Township 33 South, Range 2 East,
Willamette Meridian, Jackson County, Oregon

Date: March 1, 1982

Basis of Bearing: Series of solar observations near the Southeast section corner

Purpose: Set monuments and mark boundary lines as shown on attached map

Procedure: A search of the records revealed that the original survey had been completed under two contracts. The North and East lines under contract number 142, dated September 9, 1870 by Turner and Howard. The South and West lines under contract number 571, dated April 10, 1891 by Peter Applegate.

The corners established by the original surveys have been remonumented by the Jackson County Surveyor and the Bureau of Land Management Cadastral Surveyors. A witness corner was set for the West one-quarter corner on the original survey. In 1974 the Bureau of Land Management established the location of the West one-quarter corner.

I ran a random line closed traverse around the exterior of the section, tying to the corners needed for control of this survey. The boundary lines needed were then computed and established as shown on the map to accompany this report.

Corners and accessories found and accepted:

Section corner common to Section 12 and 13 Township 33 South Range 2 East, and Section 7 and 18 Township 33 South Range 3 East. At the corner location I found a 2½ inch dia. bronze disc Jackson County monument marked:

T33S R2 & 3E
12 | 7
13 | 18
Sec. Cor.
C.S. 1961

From which:

An 18½ inch dia. fir bears S35°02'W 53.10 feet unopened
A 20 inch dia. fir bears S48°57'E 46.81 feet unopened
An 11½ inch dia. fir bears N51°22'E 48.48 feet unopened
A 10 inch dia. Laurel bears N69°00'W 2.80 feet unopened