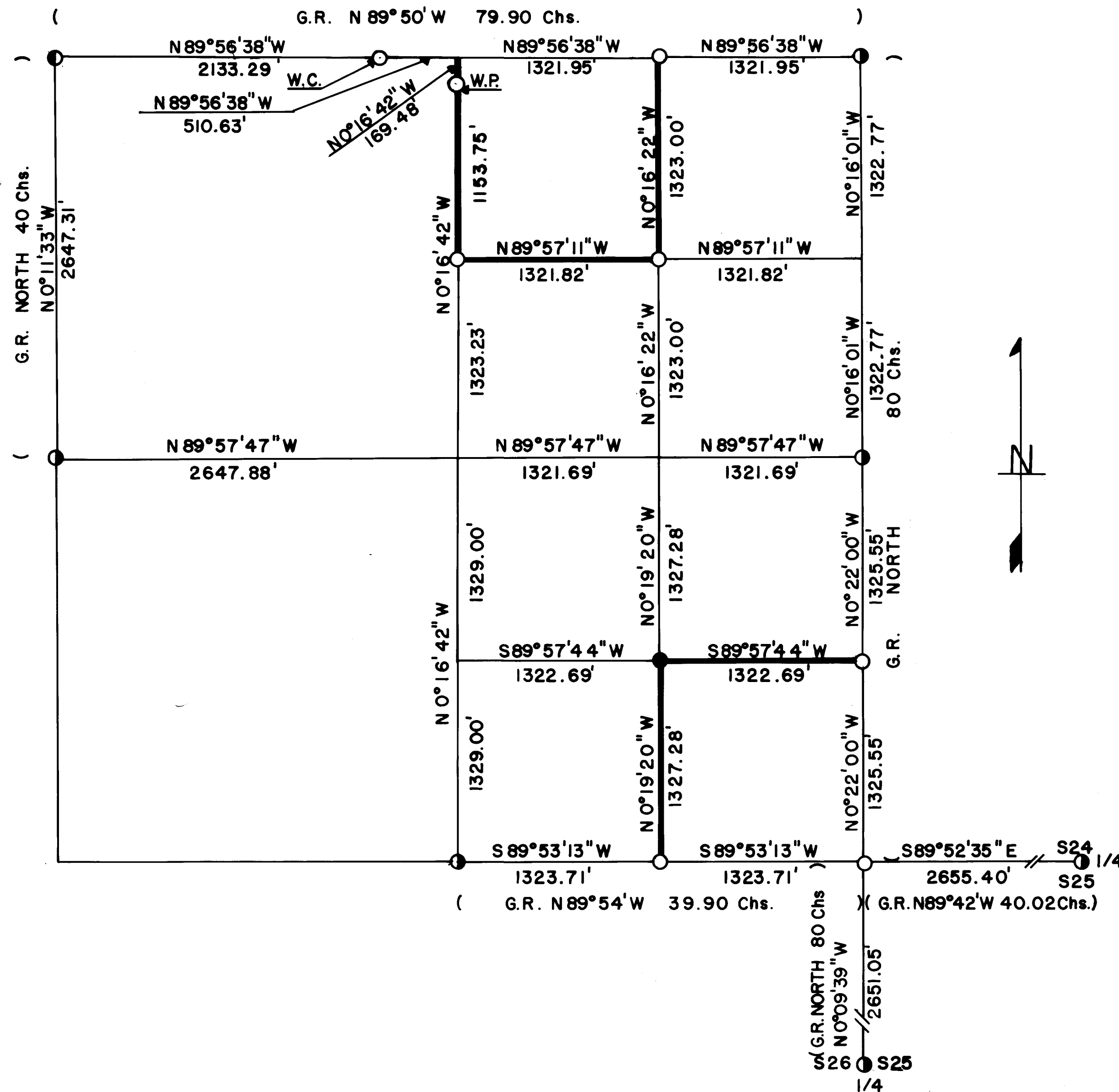
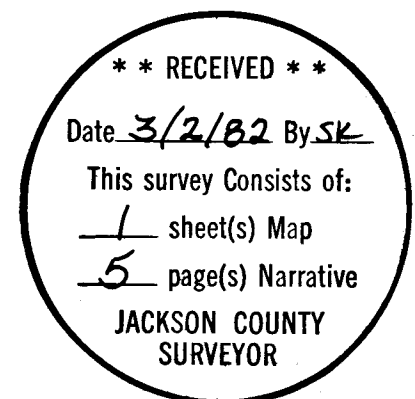
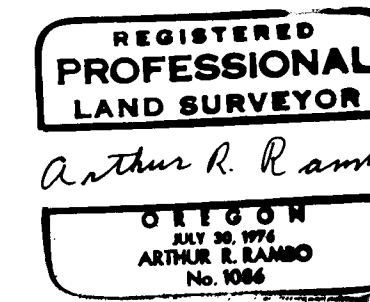


S23 T34S R1E W.M.



CERTIFICATE OF SURVEY

I, ARTHUR R. RAMBO, REGISTRATION No. 1086 REGISTERED PROFESSIONAL LAND SURVEYOR STATE OF OREGON, HEREBY CERTIFY THAT THIS MAP CORRECTLY REPRESENTS A SURVEY MADE BY ME OR UNDER MY DIRECTION IN CONFORMANCE WITH THE LAWS OF THE STATE OF OREGON.



LEGEND

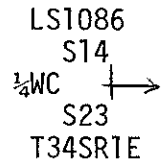
- FOUND STANDARD B.L.M. MONUMENT
- FOUND COUNTY MONUMENT
- SET 5/8" BY 30" REBAR WITH 1 1/2" ALUM. CAP
- SET 1 1/2" ALUM. CAP IN A 28" BY 43" ROCK
- G.R. 1855 GOVERNMENT RECORD
- W.C. WITNESS CORNER
- W.P. WITNESS PIN
- LINE POSTED AND BLAZED THIS SURVEY

BASIS OF BEARING
SOLAR OBSERVATION

SCALE
1" = 600'

DATE
26 FEB, 1982

The 1/4 corner common to S23 and S14 falls in the North edge of Big Butte Creek so I set a witness corner on the West bank of Big Butte Creek at a point on the section line between S23 and S14 N89°56'38"W 510.63 feet from 1/4 corner location. Set a 1 1/2 in. dia. aluminum cap on 5/8 in. by 30 in. rebar marked:



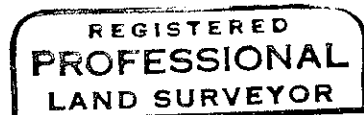
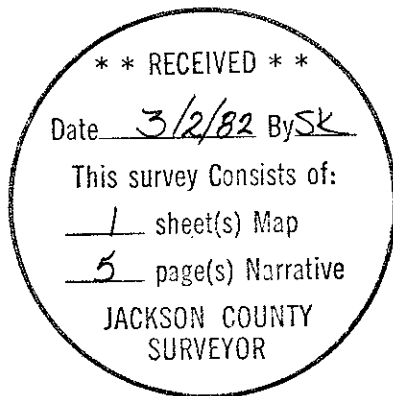
From which I take:

- A 7 in. dia. oak S4°20'00"W 12.9 feet marked WC 1/4 S 23 in upper face, B.T. with a brass washer marked LS 1086 tacked into lower face
- A 6 1/2 in. dia. oak N39°30'30"E 28.40 feet marked WC 1/4 S 14 in upper face, B.T. with a brass washer marked LS 1086 tacked into lower face

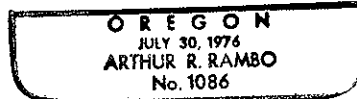
On North South center line of S23 set witness pin on South side of Big Butte Creek S0°16'42"E 169.48 feet from 1/4 corner between S23 and S14, I set a 1 1/2 in. dia. aluminum cap on 5/8 in. by 30 in. rebar unmarked

From which:

- A 6 1/2 in. dia. oak bears N57°25'30"E 15.27 feet marked upper face, no scribe lower face no scribe with a brass washer marked LS 1086 tacked into it
- A 17 in. dia. oak bears N45°54'36"W 21.29 feet marked upper face no scribe lower face no scribe with a brass washer marked LS 1086 tacked into it



Arthur R. Rambo



Set SE 1/16 corner section 23, A 1½" in. aluminum cap set in Northwest corner of a 28 in. by 43 in. rock marked:

LS1086
S23
SE + 1/16
T34SR1E

From which I take:

A 19 in. dia. oak S64⁰46'W 33.7 feet marked SE 1/16
S23 in upper face, B.T. with brass washer marked
LS 1086 tacked into lower face
A 22½ in. dia. oak S31⁰01'E 21.4 feet marked SE 1/16
S23 in upper face, B.T. with brass washer marked
LS 1086 tacked into lower face

Set E 1/16 corner common to sections 23 and 26, a 1½ in. dia. aluminum cap on 5/8 in. by 30 in. rebar marked:

LS1086
S23
E + 1/16
S26
T34SR1E

From which I take:

A 12½ in. dia. pine N57⁰04'E 10.9 feet marked E 1/16
S23 in upper face, B.T. with brass washer marked
LS 1086 tacked into lower face
A 7 in. dia. fir S11⁰24'E 21.0 feet marked E 1/16
S26 in upper face, B.T. with brass washer marked
LS 1086 tacked into lower face

Set S 1/16 corner common to sections 23 and 24, A 1½ in. dia. aluminum cap on 5/8 in. by 30 in. rebar marked:

LS1086
S1/16
S23 + S24
T34SR1E

From which I take:

An 8" in. dia. madrone S85⁰34'W 11.73 feet marked
S 1/16 S23 in upper face, B.T. with a brass washer
tacked into lower face
A 13½ in. dia. madrone N21⁰27'E 53.72 feet marked
S 1/16 S24 in upper face, B.T. with a brass washer
tacked into lower face

Set Section corner common to sections 23, 24, 25 and 26 by double proportionate measurement a 1½ in. dia. aluminum cap on 5/8 in. by 30 in. rebar buried 6 in. under ground on West side of East ditch of logging road marked:

LS1086
S23 | S24
S26 | S25
T34SR1E

From which I take:

An 11 in. dia. fir bears S39⁰26'40"E 38.76 feet marked
S 25 in upper face, B.T. with a brass washer marked
LS 1086 tacked into lower face
A 12 in. dia. oak bears S68⁰53'11"W 151.39 feet marked
S 26 in upper face, B.T. with brass washer marked
LS 1086 tacked into lower face
An 11½ in. dia. pine bears N27⁰52'W 85.82 feet marked
S23 in upper face, B.T. with a brass washer marked
LS 1086 tacked into lower face
A 21 in. dia. oak bears N16⁰29'32" E 86.92 feet marked
S 24 in upper face, B.T. with a brass washer marked
LS 1086 tacked into lower face

One quarter corner common to sections 23 and 26. At the corner location I found a 2½ in. brass disc marked:

T34S R1E
S23
½-.-
S26
Jackson County

1974

From which:

A 23 in. dia. oak bears S20°46'E 35.42 feet marked both faces chopped out, no scribe visible
A 21 in. dia. fir bears S12°39'E 28.68 feet marked partially healed faces, some scribe visible
A 42 in. dia. fir stump bears N21°06'W 22.71 feet marked scribe visible on small pieces
A 7½ in. dia. oak bears N31°29'E 56.84 feet marked partially healed faces, some scribe visible

Corners set this survey:

Set CN 1/16 corner section 23 a 1½ in. aluminum cap on 5/8 in. by 30 in. rebar stamped:

LS1086
CN
1/16 + S23
T34SR1E

From which:

An 11 in. dia. pine S76°35'E 42.5 feet marked CN 1/16 S23 in upper face. B.T. with brass washer marked LS1086 tacked into lower face
A 7½ in. dia. pine N42°01'E 51.4 feet marked CN 1/16 S23 in upper face. B.T. with brass washer marked LS 1086 tacked into lower face

Set N.E. 1/16 corner section 23, a 1½ in. aluminum cap on 5/8 in by 30 in rebar marked:

LS1086
NE
1/16 + S23
T34SR1E

From which:

An 8½ in. dia. pine S85°59'E 29.27 feet marked NE 1/16 S23 in upper face, B.T. with a brass washer marked LS 1086 tacked into lower face
A 17 in. dia. oak N9°32'W 25.6 feet marked NE 1/16 S23 in upper face, B.T. with a brass washer marked LS 1086 tacked into lower face

Set E 1/16 corner common to Sections 23 and 14, a 1½ in. aluminum cap on 5/8 in. by 30 in. rebar marked:

LS1086
S14
E 1/16 +
S23
T34SR1E

From which I take:

A 12½ in. dia. oak S38°07'E 35.9 feet marked E 1/16 S23 in upper face, B.T. with brass washer marked LS 1086 tacked into lower face
An 11 in. dia. pine N22°54'W 48.5 feet marked E 1/16 S14 in upper face, B.T. with brass washer marked LS 1086 tacked into lower face

Section corner common to sections 14, 13, 24 and 23 at the corner location I found a 2 3/4 in. bronze disc on a 1 1/2 in. iron pipe marked:

T34S R1E
14|13
Sec—|—Cor
23|24
C.S.
1967

From which:

A 4 1/2 in. dia. oak bears S31°18'W 5.67 ft. marked healed blazes
A 10 in. dia. cedar bears N59°43'W 29.76 ft. marked partially healed faces, some scribe visible
A 19 in. dia. oak snag bears N28°36'E 25.73 ft. marked rotten chopped out faces, no scribe visible
An 8 in. dia. pine bears S84°27'E 12.54 ft. marked partially healed faces, some scribe visible
A 12 in. dia. down oak bears S61°01'E 61.10 ft. to center of stump marked no face, no scribe
A 20 1/2 in. dia. fir bears S13°05'E 59.16 ft. marked healed faces

Section corner common to sections 15, 14, 22 and 23 at the corner location I found a standard B.L.M. brass cap marked:

T34S R1E
S15, S14
S22†S23
1957

From which:

A 15 1/2 in. dia. fir bears S29°03'E 18.88 feet marked healed faces
A 16 1/2 in. dia. fir bears S43°50'W 18.33 feet marked healed faces
A 19 in. dia. pine stump bears S89°46'W 36.76 feet marked 22 in upper face
A 17 in. dia. fir bears N52°39'W 22.47 feet marked healed faces
A 27 in. dia. pine stump bears N6°13'W 29.91 feet marked unopened
A 13 in. dia. fir bears N69°54'E 5.28 feet marked healed faces

One quarter corner common to sections 22 and 23. At the corner location I found a 2 1/2 inch dia. bronze disc marked:

Jackson County 1975
T34S R1E
1/4S
22|23

From which:

A 7 in. dia. oak bears S71°54'W 16.54 feet marked chopped out faces, no scribe visible
A 9 1/2 in. dia. oak bears N65°34'W 39.07 feet marked upper face healed, lower face partially healed, some scribe visible
A 15 in. dia. oak bears S32°01'E 9.67 feet marked rotted out, no scribe visible
A 14 in. dia. fir bears S14°19'E 32.35 feet marked healed faces

Survey Narrative to Comply with Paragraph 209.250 O.R.S.

Survey for: Medford Resources Corporation
P. O. Box 550
Medford, Oregon 97501

Survey by: Arthur R. Rambo LS 1086
331 Bluff Street
Butte Falls, Oregon 97522

Date: February 26, 1982

Location: Section 23 Township 34 South Range 1 East W.M.

Basis of Bearing: Solar observation near the Southeast section corner

Purpose: To monument and mark boundary lines of Medford Resources Corporation lands in Section 23 Township 34 South Range 1 East

Procedure: A search of the records revealed that Ives & Hude completed the original survey of this section under contract No. 47, dated August 18, 1854. The original corners needed for control of this survey, except for the N¼ corner and the Southeast section corner, have been re-established by the Bureau of Land Management, Cadastral Surveys Division, and the Jackson County Surveyor.

A search in the field revealed no evidence of the N¼ corner or Southeast section corner. I ran a closed traverse around section 23 and section 25 tying to the corners needed for control of this survey. I then calculated position of these corners and conducted another search in the field. The N¼ corner position falls in the North edge of Big Butte Creek as it flows now. This whole area is in a flood plain and all trees and stumps have been washed away. The Southeast section corner position falls in the East edge of a logging road. There was an old log landing at this point and an intersection of old roads. No evidence of either corner was found, so I set these corners by proportionate measurement. The corners and boundaries needed were the computed, established and monuments were set as shown on the plat to accompany this report.

Corners and accessories found and accepted for this survey. Measurements to bearing trees are to the center of trees unless stated otherwise.

One quarter corner common to Section 23 and 24 T34SR1E at the corner location I found a 2½ in. dia. bronze disc. on a 1½ in. G.I. pipe in a mound of stone marked:

T34S R1E
¼ S
23 | 24
C.S.
1973

From which:

- An 8½ in. dia. oak bears S75°08'E 32.05 feet marked partially healed blaze with scribe visible
- A 16 in. dia. oak bears S56°23'E 42.16 ft. marked B.T. visible in chopped out lower face.
- An 11 in. dia. oak bears S63°40'W 56.62 ft. marked partially healed blaze with scribe visible.