

SURVEY FOR U.S. FOREST SERVICE

IN SECTION 13, T.34S., R.2E., W.M., JACKSON COUNTY, OREGON

DECEMBER 15, 1981

SCALE: 1" = 500'

** RECEIVED **

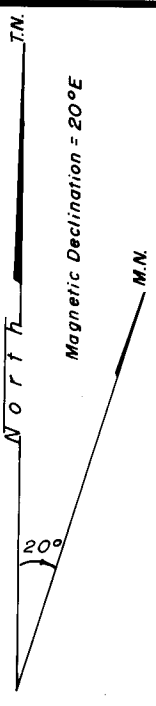
Date 2/23/82 By SK

This survey consists of:

1 sheet(s) Map

6 page(s) Narrative

JACKSON COUNTY SURVEYOR



Legend

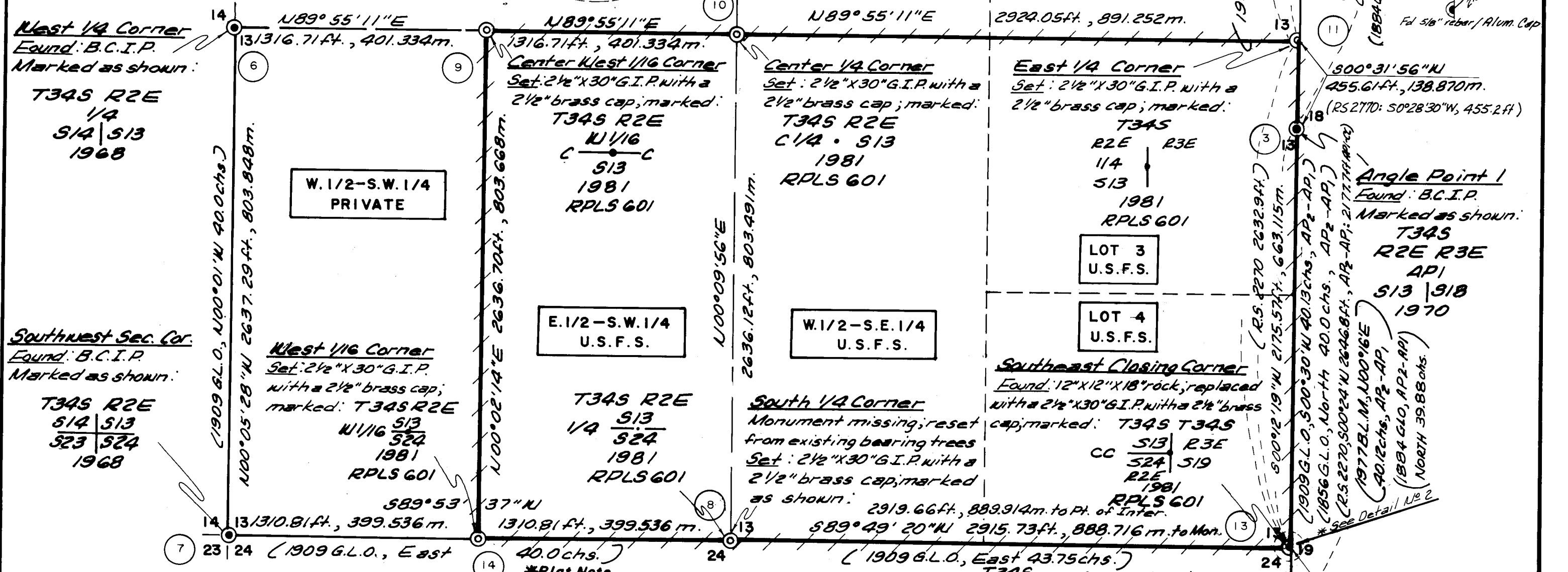
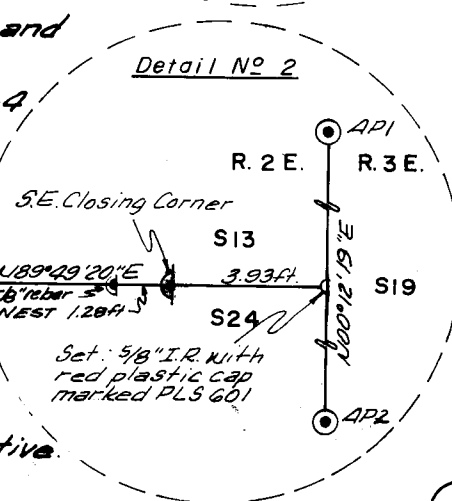
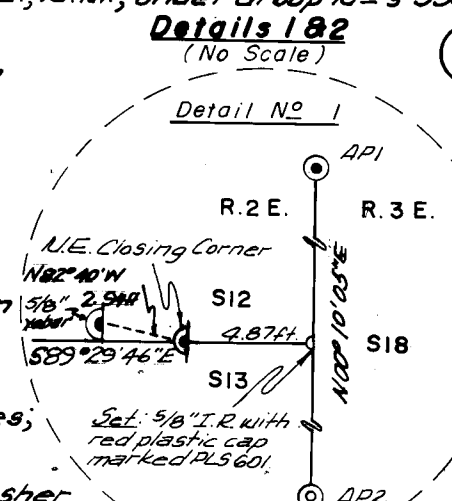
- Found: Standard B.L.M. Monument; -3" Iron Pipe With A 3" Brass Cap - Except As Noted
- Set: 2 1/2" x 30" G.I.P., 24" In The Ground, With A 2 1/2" Brass Cap - Except As Noted
- Set: 5/8" Iron Rebar With Red Plastic Cap - Marked 'PLS 601'
- Record Data
- True Line - Posted With 6ft. Aluminum Posts & U.S.F.S. Boundary Signs - Blazed & Painted.
- B.C.I.P. - Brass Cap Iron Pipe
- Refers To Corner Number In Narrative
- R.S. - Record Survey; Jackson County Surveyor's Office
- chs. - Chains
- m. - Meters
- ft. - Feet
- G.L.O. - General Land Office
- G.I.P. - Galvanized Iron Pipe

History of Surveys

- The Range Line between T.34S., R.2E. & T.34S., R.3E. was surveyed by Nathaniel Ford, Contract No. 58, plat approved July 6, 1856.
- The East boundary of T.34S., R.2E. was resurveyed by Rufus S. Moore, Contract No. 475, plat approved April 10, 1884.
- Section 13 was surveyed by E. B. Henry, General Land Office, Contract No. 774, plat approved October 15, 1909.
- The North line of Section 13 was surveyed by Duane A. Smeltzer, PLS 461, R.S. No. 2317, filed October 18, 1963.
- The Range Line including the East line of Section 13, was surveyed by Duane A. Smeltzer, PLS 461, R.S. No. 2770, filed April 29, 1965.
- Certain remonumentation was performed by the B.L.M. in 1968, 1970, 1974, under General Special Instructions, Group 350, Oregon, dated May 3, 1957, including corners around Section 13, approved August 17, 1973 & August 17, 1978.
- The B.L.M. made a dependent resurvey of a portion of the West boundary of T.34S., R.3E., abutting Section 13, T.34S., R.2E., U.M., under Group No. 350 & 712, plat approved August 17, 1977.
- The East 1/4 Corner of Section 13 was not set in the G.L.O. surveys.

Notes - Section 13

- Bearings are base on a solar observation taken at the Southeast corner of Section 13; T.34S., R.2E., U.M.
- All B.T.'s have: 6" painted red band; painted faces; an Attention sign on the back; B.T. tags.
- All new B.T.'s marked also have a 3/4" brass washer stamped 'PLS 601' on lower face.
- A 6ft. fence post with an Attention sign or a Land Survey Monument sign was placed at each corner.
- Survey Method & Equipment: Wild-T-16, Wild-DI-A Distomat, and a TS10 Topcon Guppy.
- Property lines shown are marked with 6ft. posts and National Forest Boundary signs; lines are blazed and painted; - one quarter blazes are on U.S.F.S. property, and facing blazes on private property.
- Bearings & distances shown from Record Surveys 2317 & 2270 are to the corners of this survey, but not always to identical positions - See Narrative.



Certificate of Survey

I, **MALCOLM N. CLARK** & **JERRY R. SWANSON**, registered professional land surveyors in the State of Oregon, hereby certify that this plat and the notes hereon, are a correct representation of a survey I performed during November & December, 1981, for the U.S. Forest Service, in accordance with the Statutes of the State of Oregon, and with the articles of my contract.

REGISTERED PROFESSIONAL LAND SURVEYOR
MALCOLM N. CLARK
601

REGISTERED PROFESSIONAL LAND SURVEYOR
JERRY R. SWANSON
760

Accepted And Approved For The U.S. Forest Service

Randall M. Zinner 2-23-82
C.O.R. DATE

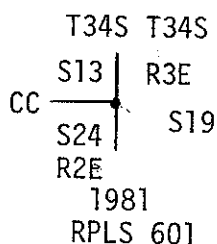
U.S.F.S. CONTRACT 53-04 HI-1-8577N
CONTRACTOR IDENTIFICATION
CHICKERING-GREEN EMPIRE, INC.
360 S.E.'H' STREET SUITE B
GRANTS PASS, OREGON 97526 ph 503-474-2035

*Plat Note
Filed with this map of survey is a separate written narrative consisting of 6 pages which by reference is made a part hereof.

Austin Cadastral
C.B.E.I. G.F.S. 8110-1
Drafted by J.C.C.

Corners Found / Set on this survey:

13.



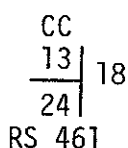
Found original 12" x 12" x 18" rock, firmly set. Rock has chiseled "X" on top and CC on the West face. At the position of the rock, set a 2 1/2" x 30" GIP, 24" in the ground, with a 2 1/2" brass cap marked as shown. I deposited rock in hole alongside iron pipe.

B.T.'s Found:

- A 40" Fir bears S33°50'W, 24.3 ft., blazed and healed
- A 24" Fir bears S59°30'W, 36.5 ft., blazed and healed
- A 6" Cedar bears N16°30'W, 16.3 ft., scribing visible

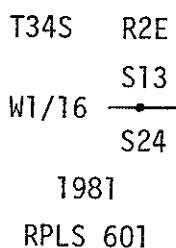
Red Plastic Cap on PLS 601

Set a 5/8" x 30" rebar N89°49'20"E, 3.93 ft. from the iron pipe set to mark the point of intersection of the Southerly line of Section 13, with the Range line.



A 5/8" rebar with a 1 1/2" aluminum cap marked as shown bears West 1.28 ft. from the 2 1/2"X30" GIP at the position of the original closing corner monument(rock), 5/8" rebar set in RS 2770, by Daune A Smeltzer, PLS 461, filed April, 1965.

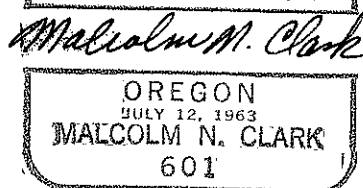
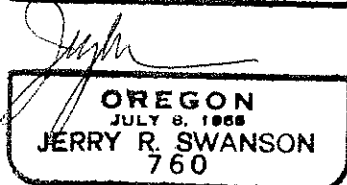
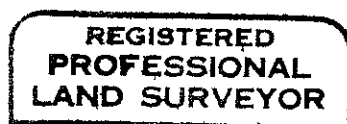
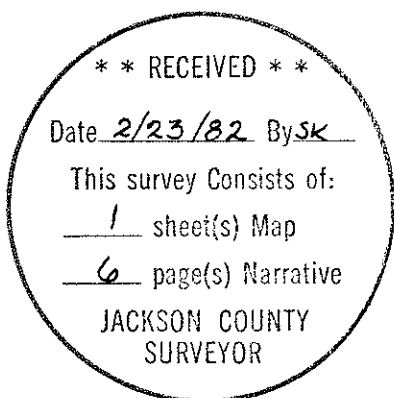
14.



At the mid-point position between the SW corner and the South one quarter corner of Section 13, set a 2 1/2" x 30" GIP, 24" in the ground, with a 2 1/2" brass cap marked as shown.

B.T.'s Marked:

- An 8" Fir bears N79°40'E, 31.8 ft., scribed W1/16S13 BT
- A 15" Fir bears S15°15'W, 50.5 ft., scribed W1/16S24 BT



Corners Found
Set on this survey:

10. T34S R2E
C1/4 • S13
1981
RPLS 601
- At the corner position, set a 2 1/2" x 30" GIP, 24" in the ground, in a mound of rocks, with a 2 1/2" brass cap marked as shown.
- B.T.'s Marked:
A 12" Fir bears S37°15'E, 40.0 ft., scribed C1/4S13 BT
A 12" Fir bears S15°20'W, 61.6 ft., scribed C1/4S13 BT
11. T34S
R2E R3E
1/4 |
S13 |
1981
RPLS 601
- At the mid-point between the NE corner and the SE corner of Section 13, and on line between Angles Points on the Range line between Township 34 South, Range 2 East and Range 3 East, set a 2 1/2" x 30" GIP, 24" in the ground, in a mound of rocks, with a 2 1/2" brass cap marked as shown.
- B.T.'s Found:
A 5" Fir bears S67°25'W, 20.4 ft., blazed and healed
A Fir stump bears N23°55'W, 25.2 ft., scribing visible
(Note: both of these B.T.'s per RS 2770 by Smeltzer)
- New B.T.'s Marked:
A 24" Cedar bears S70°55'W, 48.8 ft., scribed T34SR2 1/4S13 BT
A 15" Fir bears N15°30'W 77.3 ft., scribed T34SR2 1/4S13 BT
- 1/4
13 | ∞
Only | —
RS461
- A 5/8" rebar with aluminum cap marked as shown bears S47°25'W, 2.80 ft., from the 2 1/2"X30" GIP set for the East one-quarter corner of Section 13, RS 2770, 1965, set by Duane A. Smeltzer, PLS 461).
12. T34S T34S
S12 | R3E
CC — | S18
S13 |
R2E
1981
RPLS 601
- Found original 6" x 6" x 8" rock, firmly set; marked with CC on westside. At the position of the rock, set a 2 1/2" x 30" GIP, 24" in the ground, with a 2 1/2" brass cap marked as shown. I deposited rock in hole alongside iron pipe.
- B.T.'s Found:
A 40" Fir bears S07°50'W, 18.0 ft., blazed and healed
A 15" Fir snag bears N83°15'W, 17.3 ft., scribing visible
- New B.T.'s Marked:
An 18" Fir bears S69°00'W, 55.0 ft., scribed T34SR2ES13CC BT
An 18" Fir bears N46°55'W, 47.2 ft., scribed T34SR2ES12CC BT
- Red Plastic Cap on → Set a 5/8" x 30" rebar S89°29'46"E, 4.87 ft to mark the point of intersection of the Northerly line of Section 13 and the Range line, from the 2 1/2" GIP set at the closing corner.
- PLS
601
CC
12 | 18
— |
13 | RS 461
- A 5/8" rebar with 1 1/2" aluminum cap marked as shown bears N82°40'W, 2.94 ft. (RS 2770 by Smeltzer, PLS 461, survey dated 1965), from the 2 1/2"X30" GIP set at the closing corner.

Corners $\frac{\text{Found}}{\text{Set}}$ on this survey:

5. T34S R2E Found Standard B.L.M. 3" iron pipe with 3" brass cap marked as shown.

$\frac{1}{4} \frac{S12}{S13}$ B.T.'s Found:
 1974 A 14" Chinquipin bears S62°35'E, 16.6 ft., scribing visible
 A 24" Fir bears S29°40'W, 24.9 ft., blazed and healed
 An 8" Fir snag bears N64°10'W, 21.3 ft., scribing visible
 A 24" Fir bears N47°40'W, 63.8 ft., blazed and healed
6. T34S R2E Found Standard B.L.M. 3" iron pipe with 3" brass cap marked as shown.

$\frac{1}{4}$ B.T.'s Found:
 S14 | S13 A 12" Fir bears N41°40'E, 19.2 ft., blazed and healed
 1968 A 42" Fir bears S71°55'E, 49.4 ft., blazed and healed
 A 28" Fir bears N66°00'W, 27.6 ft., blazed and healed
7. T34S R2E Found Standard B.L.M. 3" iron pipe with 3" brass cap marked as shown.

$\frac{S14}{S23} \mid \frac{S13}{S24}$ B.T.'s Found:
 1968 A 15" Fir bears N23°05'E, 41.0 ft., blazed and healed
 A 24" Fir bears S89°15'E, 42.6 ft., blazed and healed
 A 15" Fir bears S37°55'W, 36.1 ft., scribing visible
 A 30" Fir bears N24°40'W, 44.0 ft., scribing visible in lower face, upper blaze healed

New B.T. Marked:
 A 12" Fir bears N36°10'W, 84.0 ft., scribed T34SR2ES14 BT
8. T34S R2E From the 18" fir bearing tree I set, at the corner position, a 2 1/2" x 30" GIP, 28" in the ground in a mound of stones.

$\frac{1}{4} \frac{S13}{S24}$ B.T.'s Found:
 1981 An 18" Fir bears record N01°00'E, 16.83 ft., blazed and healed (BT used to re-establish corner position)
 RPLS 601 A 60" Fir bears S10°40'W, 14.2 ft., blazed and healed
9. T34S R2E At the corner position, set a 2 1/2" x 30" GIP, 24" in the ground, in a mound of rocks, with a 2 1/2" brass cap marked as shown.

W 1/16 B.T.'s Marked:
 C ——— C A 12" Fir bears N38°30'E, 67.0 ft., scribed CW1/16S13 BT
 S13 A 10" Fir bears S51°00'E, 42.8 ft., scribed CW1/16S13 BT
 1981
 RPLS 601

Corners Found
Set on this survey:

1.

<p>T34S R2E R3E AP1 S12 S7 1974</p>	<p>Found Standard B.L.M. 3" iron pipe with 3" brass cap marked as shown.</p> <p>B.T.'s Found: A 24" Fir bears S22°40'E, 17.9 ft., chopped out A 30" Fir bears S10°15'W, 13.3 ft., chopped out A 36" Fir bears S82°20'W, 26.7 ft., blazed and healed</p>
---	---

2.

<p>T34S T34S R2E R3E AP 2 S13 S18 1981 RPLS 601</p>	<p>From original evidence found at the corner location, I set a 2 1/2" x 30" GIP, 24" in the ground, with a 2 1/2" brass cap marked as shown.</p> <p>B. T.'s Found: Found original bearing tree, a 65" Fir snag, bears record S25°00'W, 38.28 ft.</p> <p>New B.T.'s Marked: A 24" Fir bears S69°40'E, 27.3 ft., scribed T34SR3EAP2S18 BT A 24" Fir bears S59°55'W, 21.9 ft., scribed T34SR2EAP2S13 BT</p> <p>Also a 20" Fir with a 65 year old cruiser's mark bears S26°15'W 34.2 ft.</p>
---	---

3.

<p>T34S R2E R3E AP 1 S13 S18 1970</p>	<p>Found Standard B.L.M. 3" iron pipe with 3" brass cap marked as shown.</p> <p>B.T.'s Found: A 40" Cedar stump bears S26°30'E, 21.9 ft., scribing visible A 40" Cedar bears S07°00'W, 34.15 ft., blazed and healed</p> <p>New B.T.'s Marked: A 14" Fir bears N66°50'E, 26.6 ft., scribed T34SR3EAP1S18 BT</p>
---	--

4.

<p>T34S R2E R3E AP 2 S24 S19 1968</p>	<p>Found Standard B.L.M. 3" iron pipe with 3" brass cap marked as shown.</p> <p>B.T.'s Found: A 70" Pine stump bears N38°50'E, 116.4 ft., opened, scribing visible A 40" Fir bears N46°05'E, 50.9 ft., blazed and healed A 24" Fir bears S35°20'W, 22.8 ft., blazed and healed</p>
---	--

9201

Page 2 of 6 pages

Procedure:
(continued)

A closed random traverse was run in the approximate location of property lines to be marked. Offsets from the random lines were made to the property line which was blazed, painted and posted with 6 foot aluminum fence posts with National Forest boundary signs.

All B.T.'s found or set have a 6" red band of paint, B.T. tags and Attention Signs. An Attention Sign or a Land Survey Monument Sign was set at each corner surveyed to or set. All new B.T.'s marked have a 3/4" brass washer stamped LS601 nailed on the lower face.

Filed under this same Survey Number is a Map of Survey consisting of one (1) map sheet showing lines surveyed.

This survey not filed within the 45 days as provided by ORS because of deep snow on the survey site prevented the U.S. Forest Service from final inspection of field survey.

Survey Number 9201

Page 1 of 6 pages

Survey Narrative to Comply with O.R.S. 209.250

Location: Section 13, Township 34 South, Range 2 East, Willamette Meridian

Survey for: U. S. Forest Service, Rogue River National Forest
Medford, Oregon
Austin Cadastral Survey
Contract Number 53-04H1-1-8577

Survey by: CHICKERING-GREEN EMPIRE, INC.
360 S. E. "H" St.
Grants Pass, Oregon 97526
(Malcolm N. Clark, RPLS 601, Jerry R. Swanson, RPLS 760).

Date: December 15, 1981

Equipment: Wild T-16, Wild DI-4 Distomat and a TS 10 Topcon Guppy

Purpose: To blaze and post the boundaries of the U. S. Forest Service land in Section 13, and establish the East one quarter corner to Section 13, Township 34 South, Range 2 East, Willamette Meridian, and various corners of the U. S. Forest Service lands lying in Section 13.

Procedure: The Range line between Ranges 2 East and 3 East of Township 34 South was surveyed by Nathaniel Ford, U.S. Deputy Surveyor, in 1855; Rufus S. Moore, U.S. Deputy Surveyor, changed Ford's corners along the Range line to minimum control in 1883 and Ford's corners were then subsequently changed to angle points by Eugene B. Henry, U.S. Deputy Surveyor in 1908.

Basis of bearing is a solar observation taken at the Southeast corner of Section 13, Township 34 South, Range 2 East, Willamette Meridian. The East one quarter corner of Section 13 was set holding a mid-point latitude position between the Northeast and the Southeast corners of said Section 13. Departure control for this corner was the angle points monumented and/or found along the line common to Ranges 2 and 3 East.

The South one quarter corner of Section 13 was re-monumented from evidence noted as the monument was missing.

Points of Intersection, marked as shown on the map, were calculated on a line between the Senior Angle Points and on an line Easterly from the appropriate one quarter corner through the closing corner.

The history of surveys in and along Section 13, and the line common to Ranges 2 and 3 East is as noted on the map.