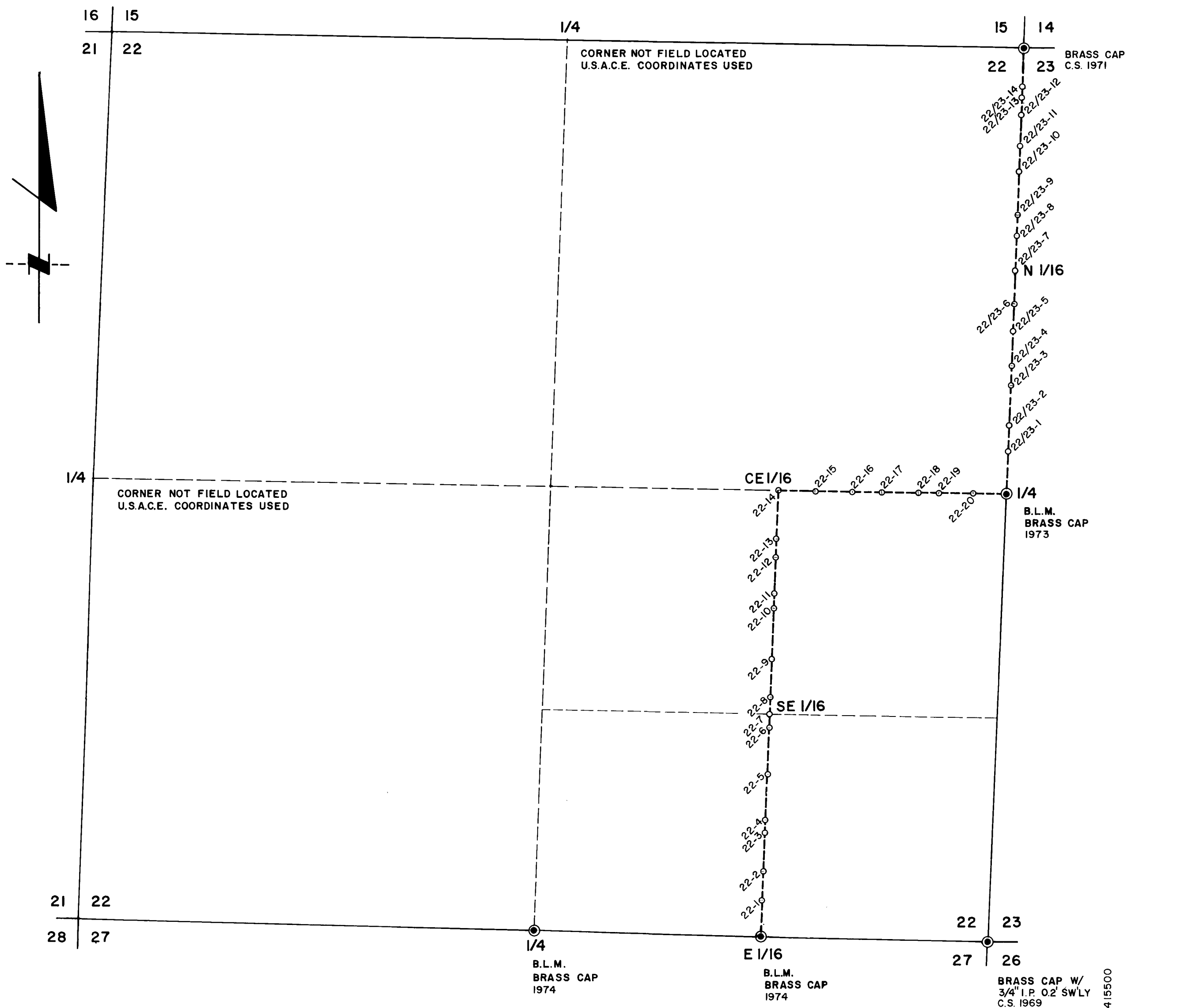


1409200  
382700

1415500  
382700



1415500  
376300

| MARK                       | NORTHING   | EASTING     | BEARING         | DISTANCE |
|----------------------------|------------|-------------|-----------------|----------|
| <b>SECTION BOUNDARY</b>    |            |             |                 |          |
| E 1/4 CORNER SECTION 22    | 379498.876 | 1414893.333 | N 02° 16' 44" E | 2645.25' |
| NE CORNER SECTION 22       | 382142.032 | 1414998.517 | N 89° 06' 48" W | 2682.93' |
| N 1/4 CORNER SECTION 22    | 382183.555 | 1412315.890 | S 02° 17' 20" W | 2644.86' |
| C 1/4 CORNER SECTION 22    | 379540.801 | 1412210.257 | S 02° 17' 20" W | 2626.93' |
| S 1/4 CORNER SECTION 22    | 376815.966 | 1412105.341 | S 88° 44' 56" E | 1339.93' |
| E 1/16 CORNER SECTION 22   | 376886.709 | 1413444.956 | S 88° 41' 18" E | 1343.23' |
| SE CORNER SECTION 22       | 376855.944 | 1414788.431 | N 02° 16' 23" E | 2645.01' |
| E 1/4 CORNER SECTION 22    | 379498.876 | 1414893.333 | N 89° 06' 17" W | 1341.70' |
| C E 1/16 CORNER SECTION 22 | 379519.838 | 1413551.795 | N 89° 06' 17" W | 1341.70' |
| C 1/4 CORNER SECTION 22    | 379540.801 | 1412210.257 | N 89° 06' 17" W | 2691.34' |
| W 1/4 CORNER SECTION 22    | 379582.850 | 1409519.250 |                 |          |
| <b>PROJECT BOUNDARY</b>    |            |             |                 |          |
| E 1/16 CORNER SECTION 22   | 376886.709 | 1413444.956 | N 02° 19' 25" E | 206.89'  |
| 22-1                       | 377093.427 | 1413453.344 | N 02° 19' 25" E | 175.57'  |
| 22-2                       | 377268.849 | 1413460.461 | N 02° 19' 25" E | 230.38'  |
| 22-3                       | 377499.037 | 1413469.801 | N 02° 19' 25" E | 77.15'   |
| 22-4                       | 377576.123 | 1413472.929 | N 02° 19' 25" E | 270.83'  |
| 22-5                       | 377846.735 | 1413483.909 | N 02° 19' 25" E | 271.01'  |
| 22-6                       | 378117.525 | 1413494.900 | N 02° 19' 25" E | 85.40'   |
| 22-7                       | 378202.915 | 1413498.361 | N 02° 19' 25" E | 93.84'   |
| 22-8                       | 378296.678 | 1413502.165 | N 02° 19' 25" E | 224.64'  |
| 22-9                       | 378521.137 | 1413511.273 | N 02° 19' 25" E | 297.14'  |
| 22-10                      | 378818.036 | 1413523.320 | N 02° 19' 25" E | 85.06'   |
| 22-11                      | 378903.023 | 1413526.768 | N 02° 19' 25" E | 227.65'  |
| 22-12                      | 379130.486 | 1413535.997 | N 02° 19' 25" E | 96.48'   |
| 22-13                      | 379226.883 | 1413539.908 | N 02° 19' 25" E | 293.20'  |
| 22-14                      | 379519.838 | 1413551.795 | S 89° 06' 17" E | 210.06'  |
| 22-15                      | 379516.556 | 1413761.834 | S 89° 06' 17" E | 223.83'  |
| 22-16                      | 379513.059 | 1413985.640 | S 89° 06' 17" E | 174.75'  |
| 22-17                      | 379510.329 | 1414160.368 | S 89° 06' 17" E | 215.00'  |
| 22-18                      | 379506.970 | 1414375.338 | S 89° 06' 17" E | 126.89'  |
| 22-19                      | 379504.987 | 1414502.212 | S 89° 06' 17" E | 191.20'  |
| 22-20                      | 379502.000 | 1414693.384 | S 89° 06' 17" E | 199.97'  |
| E 1/4 CORNER SECTION 22    | 379498.876 | 1414893.333 | N 02° 16' 44" E | 251.34'  |
| 22/23-1                    | 379750.015 | 1414903.327 | N 02° 16' 44" E | 144.64'  |
| 22/23-2                    | 379894.540 | 1414909.078 | N 02° 16' 44" E | 246.36'  |
| 22/23-3                    | 380140.705 | 1414918.874 | N 02° 16' 44" E | 116.07'  |
| 22/23-4                    | 380256.684 | 1414923.490 | N 02° 16' 44" E | 208.63'  |
| 22/23-5                    | 380465.149 | 1414931.788 | N 02° 16' 44" E | 157.29'  |
| 22/23-6                    | 380622.314 | 1414938.040 | N 02° 16' 44" E | 198.30'  |
| 22/23-7                    | 380820.454 | 1414945.925 | N 02° 16' 44" E | 265.83'  |
| 22/23-8                    | 381026.122 | 1414954.110 | N 02° 16' 44" E | 120.53'  |
| 22/23-9                    | 381146.556 | 1414958.902 | N 02° 16' 44" E | 261.72'  |
| 22/23-10                   | 381408.072 | 1414969.309 | N 02° 16' 44" E | 143.69'  |
| 22/23-11                   | 381551.648 | 1414975.023 | N 02° 16' 44" E | 203.71'  |
| 22/23-12                   | 381755.197 | 1414983.123 | N 02° 16' 44" E | 96.96'   |
| 22/23-13                   | 381851.780 | 1414986.967 | N 02° 16' 44" E | 68.94'   |
| 22/23-14                   | 381920.666 | 1414989.708 | N 02° 16' 44" E | 221.54'  |
| NE CORNER SECTION 22       | 382142.032 | 1414998.517 |                 |          |

COORDINATES ARE BASED ON OREGON STATE PLANE COORDINATE SYSTEM — SOUTH ZONE.

**\*\* RECEIVED \*\***  
Date: 2-9-82 By: RGT  
This survey consists of:  
1 sheet(s) Map  
2 page(s) Narrative  
JACKSON COUNTY SURVEYOR

**JACKSON COUNTY RECEIVED**  
APR 9 1981  
**SURVEYOR**

THE POSITION OF B.L.M. MONUMENTS HAVE NOT RECEIVED OFFICIAL ACCEPTANCE PRIOR TO THE TIME PERIOD OF THE FIELD SURVEY.

**REGISTERED PROFESSIONAL LAND SURVEYOR**  
ROBERT W. MONTGOMERY  
1974

**LEGEND**  
● MONUMENT FOUND HELD POSITION  
○ SET ALUMINUM CAST MONUMENT STAMPED  
CORPS OF ENGINEERS—U.S. ARMY PROJECT BOUNDARY SURVEY MARK

**U. S. ARMY CORPS OF ENGINEERS**

LIABILITY FOR THIS SURVEY IS EXPRESSLY LIMITED TO SAID PERSON OR PERSONS.

SURVEY IN **SEC. 22 T. 33 S. R. 1 E., W.M. JACKSON COUNTY, OREGON**

**C & G ENGINEERING, INC.**

A DIVISION OF JAMES M. MONTGOMERY, CONSULTING ENGINEERS, INC.  
3276 COMMERCIAL STREET, S.E., SALEM, OREGON 97302 (503) 585-2362  
7000 S.W. HAMPTON STREET, SUITE 215, PORTLAND, OREGON 97223 (503) 620-9053

|              |              |              |               |                 |                |
|--------------|--------------|--------------|---------------|-----------------|----------------|
| FIELD D.L.P. | DRWG. W.E.S. | CHKD. R.W.M. | SCALE 1"=500' | DATE DEC., 1979 | J.O. 6247.0023 |
|--------------|--------------|--------------|---------------|-----------------|----------------|

9192

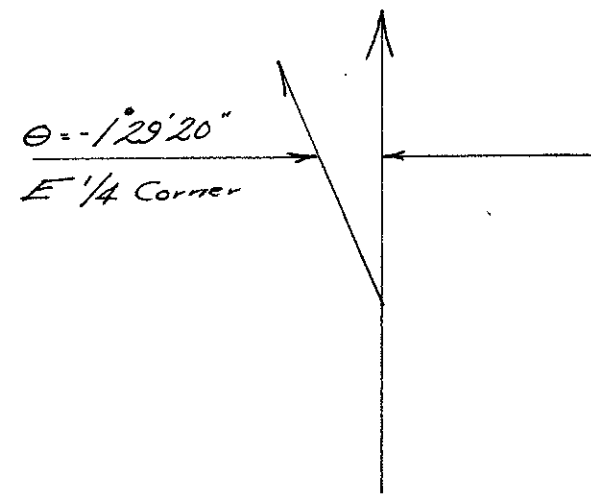
January 7, 1982

Cont. Narrative Section 22, Township 33 South, Range 1 East, Willamette Meridian

USC & GS "High Control" used by U. S. Army Corps of Engineers to establish control for Lost Creek Dam

| Zone              | Description    | Lambert Coordinates |               | Latitude |     |          | Longitude |     |          |
|-------------------|----------------|---------------------|---------------|----------|-----|----------|-----------|-----|----------|
|                   |                | North               | East          | Deg      | Min | Seconds  | Deg       | Min | Seconds  |
| Oregon South Zone | R. R. Gap 1943 | 402,234.460         | 1,338,439.230 | 42       | 44  | 37.2405B | 122       | 57  | 47.46309 |
| Oregon South Zone | Vestal 1943    | 337,947.210         | 1,386,743.160 | 42       | 34  | 15.93254 | 122       | 46  | 36.91494 |

Grid Factor = 0.999846106



\* \* RECEIVED \* \*

Date \_\_\_\_\_ By \_\_\_\_\_

This survey Consists of:

\_\_\_\_\_ sheet(s) Map

\_\_\_\_\_ page(s) Narrative

JACKSON COUNTY  
SURVEYOR

REGISTERED  
PROFESSIONAL  
LAND SURVEYOR

*Roger W. Moreland*

OREGON  
AUGUST 22, 1975  
ROGER W. MORELAND  
1033

9192

January 22, 1980  
J.O. 6247.0023

**NARRATIVE OF Sec. 22, T33S, R1E**

**CONTROL**

Within Section 22, T33S, R1E, Willamette Meridian, the following existing monuments were found and utilized for interior section control. The 1/4 corner between Sections 22 and 27; the East 1/16 corner between Sections 22 and 27; the Southeast Section corner; the East 1/4 corner between Sections 22 and 23, and the Northeast Section corner.

The North 1/4 corner between Sections 15 and 22, and the West 1/4 corner between Sections 21 and 22 were not field located. The coordinates of the positions of said 1/4 corners were furnished to C & G Engineering, Inc. by the Survey Section of the U.S. Army Corps of Engineers, Portland District. These coordinates were used for computations involving the southeast 1/4 of Section 22.

The basis of bearing and coordinate derivatives originated from triangulation stations "Mike", "Intake" and "Needle Rock". All coordinates are based on the Oregon State Plane Coordinate System, South Zone.

**PLACEMENT OF INTERIOR MONUMENTS**

The center 1/4 corner was calculated as the intersection of a line joining the East 1/4 corner and the West 1/4 corner with a line joining the North 1/4 corner and the South 1/4 corner.

The CE 1/16 corner was set on a line at an aliquot distance between the E 1/4 corner and the calculated C 1/4 corner.

The SE 1/16 corner was set on a line midpoint between the CE 1/16 corner and the E 1/16 corner between Sections 22 and 27.

The N 1/16 corner between Sections 22 and 23 was set on a line midpoint between the East 1/4 corner and the NE Section corner.

All monuments identified on the plat of Section 22, T33S, R1E, WM, as "set" monuments and not herein described are points on tangent of lines connecting the subdivisional monuments.

The position of B.L.M. monuments have not received official acceptance prior to the time period of the field survey.

