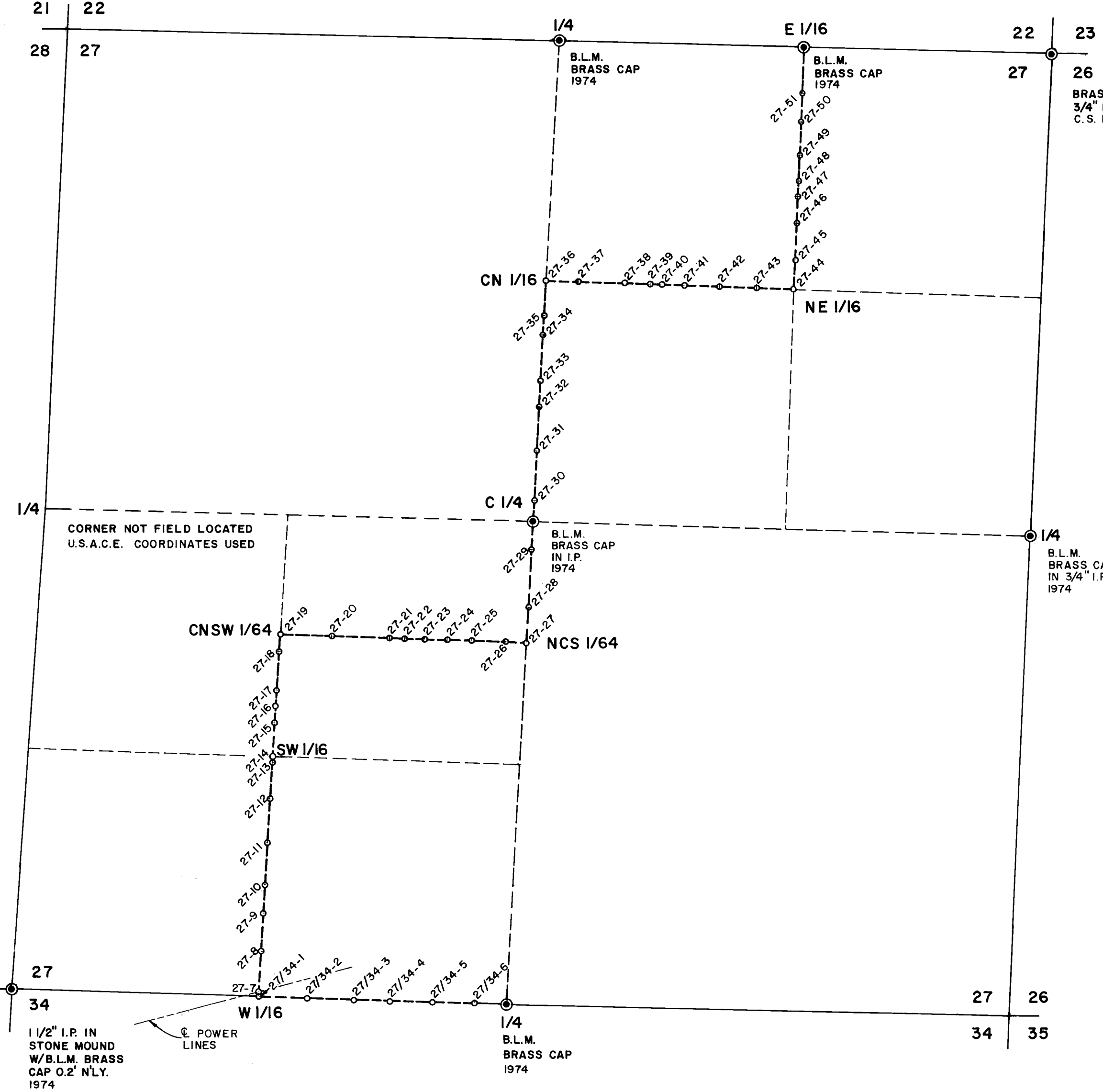
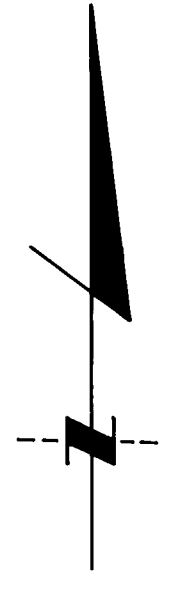


1408500  
377500

1415500  
377500



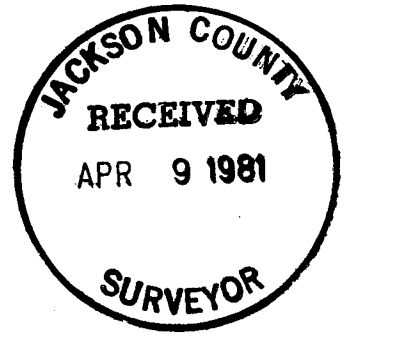
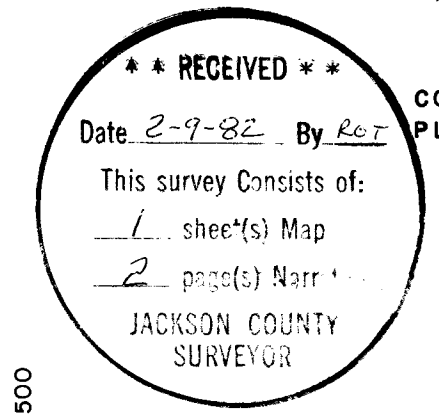
MARK SECTION BOUNDARY	NORTHING	EASTING	BEARING	DISTANCE
W 1/4 CORNER SECTION 27	374364.459	1409299.175		
SW CORNER SECTION 27	371740.509	1409122.511	S 03° 51' 06" W	2629.89'
W 1/16 CORNER SECTION 27	371702.051	1410473.109	S 88° 22' 08" E	1351.15'
S 1/4 CORNER SECTION 27	371663.593	1411823.707	S 88° 22' 08" E	1351.15'
NCS 1/64 CORNER	373639.624	1411929.924	N 03° 04' 37" E	1978.88'
C 1/4 CORNER SECTION 27	374298.301	1411965.330	N 03° 04' 37" E	659.63'
CN 1/16 CORNER SECTION 27	375607.133	1412035.336	N 03° 03' 42" E	1310.70'
N 1/4 CORNER SECTION 27	376915.966	1412105.341	N 03° 03' 42" E	1310.70'
E 1/16 CORNER SECTION 27	376886.709	1413444.956	S 88° 44' 56" E	1339.93'
NE CORNER SECTION 27	376855.944	1414788.431	S 88° 41' 18" E	1343.83'
E 1/4 CORNER SECTION 27	374229.954	1414683.737	S 02° 16' 59" W	2628.08'
C 1/4 CORNER SECTION 27	374298.301	1411965.330	N 88° 33' 35" W	2719.27'
W 1/4 CORNER SECTION 27	374364.459	1409299.175	N 88° 34' 43" W	2666.98'
<b>PROJECT BOUNDARY</b>				
S 1/4 CORNER SECTION 27	371663.593	1411823.707	N 88° 22' 08" W	174.80'
27/34-6	371668.569	1411648.976	N 88° 22' 08" W	223.17'
27/34-5	371674.921	1411425.900	N 88° 22' 08" W	227.50'
27/34-4	371681.396	1411198.493	N 88° 22' 08" W	195.96'
27/34-3	371686.974	1411002.611	N 88° 22' 08" W	251.48'
27/34-2	371694.132	1410751.232	N 88° 22' 08" W	278.24'
27/34-1	371702.051	1410473.109	N 88° 22' 08" W	24.27'
27-7	371726.276	1410474.576	N 03° 27' 49" E	216.83'
27-8	371942.712	1410487.676	N 03° 27' 49" E	211.49'
27-9	372153.811	1410500.453	N 03° 27' 49" E	157.65'
27-10	372311.171	1410509.977	N 03° 27' 49" E	228.28'
27-11	372539.032	1410523.769	N 03° 27' 49" E	244.23'
27-12	372782.820	1410538.524	N 03° 27' 49" E	190.51'
27-13	372972.985	1410550.034	N 03° 27' 49" E	176.31'
27-14	373016.715	1410552.681	N 03° 27' 49" E	98.60'
27-15	373192.707	1410563.333	N 03° 27' 49" E	85.61'
27-16	373291.127	1410569.290	N 03° 27' 49" E	206.72'
27-17	373376.577	1410574.462	N 03° 27' 49" E	91.29'
27-18	373582.923	1410586.951	N 03° 27' 49" E	269.30'
27-19	373674.048	1410592.467	S 88° 31' 32" E	322.56'
27-20	373667.119	1410861.675	S 88° 31' 32" E	81.91'
27-21	373658.819	1411184.132	S 88° 31' 32" E	103.97'
27-22	373656.712	1411266.015	S 88° 31' 32" E	128.83'
27-23	373654.037	1411369.948	S 88° 31' 32" E	131.21'
27-24	373650.722	1411498.735	S 88° 31' 32" E	182.51'
27-25	373647.346	1411629.902	S 88° 31' 32" E	117.61'
27-26	373642.650	1411812.353	S 88° 31' 32" E	189.20'
27-27	373639.624	1411929.924	S 88° 31' 32" E	312.45'
27-28	373828.551	1411940.080	N 03° 04' 37" E	157.97'
27-29	374140.554	1411956.851	N 03° 04' 37" E	114.15'
C 1/4 CORNER SECTION 27	374298.301	1411965.330	N 03° 03' 42" E	276.99'
27-30	374412.291	1411971.427	N 03° 03' 42" E	230.90'
27-31	374688.883	1411986.221	N 03° 03' 42" E	154.57'
27-32	374919.456	1411998.554	N 03° 03' 42" E	248.73'
27-33	375073.802	1412006.809	N 03° 03' 42" E	183.73'
27-34	375322.180	1412020.094	N 03° 03' 42" E	161.87'
27-35	375423.664	1412025.522	S 88° 38' 19" E	269.78'
27-36	375607.133	1412035.336	S 88° 38' 19" E	140.72'
27-37	375603.287	1412197.164	S 88° 38' 19" E	60.69'
27-38	375596.878	1412466.865	S 88° 38' 19" E	118.34'
27-39	375593.535	1412607.548	S 88° 38' 19" E	203.28'
27-40	375592.093	1412668.221	S 88° 38' 19" E	185.84'
27-41	375589.281	1412786.526	S 88° 38' 19" E	209.25'
27-42	375584.451	1412989.753	S 88° 38' 19" E	147.65'
27-43	375580.036	1413175.541	S 88° 38' 19" E	199.57'
27-44	375575.065	1413384.729	N 02° 37' 44" E	140.81'
27-45	375722.556	1413391.501	N 02° 37' 44" E	82.83'
27-46	375921.911	1413400.655	N 02° 37' 44" E	153.04'
27-47	376062.571	1413407.114	N 02° 37' 44" E	179.24'
27-48	376145.314	1413410.913	N 02° 37' 44" E	151.64'
27-49	376298.192	1413417.933	N 02° 37' 44" E	258.26'
27-50	376477.239	1413426.154		
27-51	376628.719	1413433.110		
E 1/16	376886.709	1413444.956		

CORNER NOT FIELD LOCATED  
U.S.A.C.E. COORDINATES USED

1 1/2" I.P. IN  
STONE MOUND  
W/B.L.M. BRASS  
CAP 0.2' N'LY.  
1974

B.L.M.  
BRASS CAP  
1974

B.L.M.  
BRASS CAP  
IN 3/4" I.P.  
1974



COORDINATES ARE BASED ON OREGON STATE PLANE COORDINATE SYSTEM — SOUTH ZONE.

THE POSITION OF B.L.M. MONUMENTS HAVE NOT RECEIVED OFFICIAL ACCEPTANCE PRIOR TO THE TIME PERIOD OF THE FIELD SURVEY.

- LEGEND**
- MONUMENT FOUND HELD POSITION
  - SET ALUMINUM CAST MONUMENT STAMPED
  - CORPS OF ENGINEERS - U.S. ARMY PROJECT BOUNDARY
  - - - SURVEY MARK

REGISTERED PROFESSIONAL LAND SURVEYOR

OREGON  
AUGUST 20, 1981  
ROGER W. ANDREWS

**U.S. ARMY CORPS OF ENGINEERS**

LIABILITY FOR THIS SURVEY IS EXPRESSLY LIMITED TO SAID PERSON OR PERSONS.

SURVEY IN SEC. 27 T. 33S., R. 1E., W.M.  
JACKSON COUNTY, OREGON

**C & G ENGINEERING, INC.**

A DIVISION OF JAMES M. MONTGOMERY, CONSULTING ENGINEERS, INC.  
3276 COMMERCIAL STREET, S.E., SALEM, OREGON 97302 (503) 585-2362  
7000 S.W. HAMPTON STREET, SUITE 215, PORTLAND, OREGON 97223 (503) 620-9053

9190

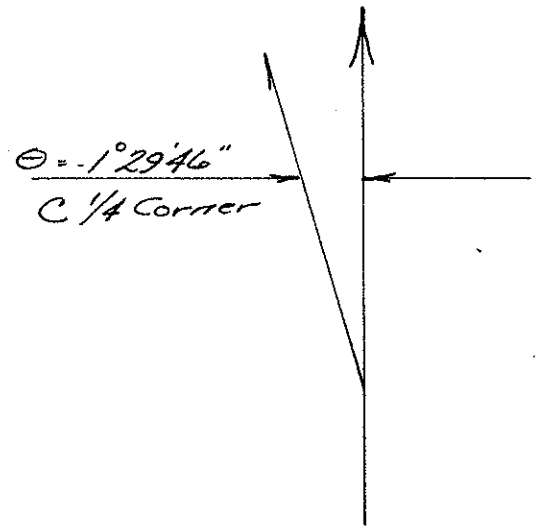
January 7, 1982

Cont. Narrative Section 27, Township 33 South, Range 1 East, Willamette Meridian

USC & GS "High Control" used by U. S. Army Corps of Engineers to establish control for Lost Creek Dam

Zone	Description	Lambert Coordinates		Latitude			Longitude		
		North	East	Deg	Min	Seconds	Deg	Min	Seconds
Oregon South Zone	R. R. Gap 1943	402,234.460	1,338,439.230	42	44	37.2405B	122	57	47.46309
Oregon South Zone	Vestal 1943	337,947.210	1,386,743.160	42	34	15.93254	122	46	36.91494

Grid Factor = 0.999846106



\*\* RECEIVED \*\*

Date 2-9-82 By RWT

This survey consists of:

1 sheet(s) Map

2 page(s) Narrative

JACKSON COUNTY  
SURVEYOR

REGISTERED  
PROFESSIONAL  
LAND SURVEYOR

*Roger W. Moreland*

OREGON  
AUGUST 22, 1975  
ROGER W. MORELAND  
1033

January 21, 1980  
J.O. 6247.0022

### NARRATIVE OF Sec. 27, T33S, R1E

#### CONTROL

Within Section 27, T33S, R1E, Willamette Meridian, the following existing monuments were found and utilized for interior section control. The southwest section corner; 1/4 corner between Sections 27 and 34; center 1/4 corner; 1/4 corner between Sections 22 and 27, East 1/16 corner between Sections 22 and 27, the northeast corner of Section 27 and the 1/4 corner between Sections 27 and 26.

The West 1/4 corner between Section 28 and Section 27 was not field located. The coordinates of the position of said 1/4 corner were furnished to C & G Engineering by the Survey Section of the U.S. Army Corps of Engineers, Portland District. These coordinates were used for computations of that portion of this survey lying within the southwest 1/4 of Section 27.

The basis of bearing and coordinate derivatives originated from triangulation stations "Mike", "Intake" and "Needle Rock". All coordinates are based on the Oregon State Plane Coordinate System, South Zone.

#### PLACEMENT OF INTERIOR MONUMENTS

The West 1/16 corner between Section 27 and Section 34 was placed at the midpoint of a line running easterly from the southwest corner of Section 27 to the 1/4 corner between Sections 27 and 34.

The southwest 1/16 corner and the CNSW 1/64 corner are placed on a line extending northerly from the West 1/16 corner between Sections 27 & 34, to its point of terminus at the midpoint of a line extending from the West 1/4 corner between Sections 28 and 27; to the center 1/4 corner of said Section 27.

The southwest 1/16 and the CNSW 1/64 corner are set at aliquot distances.

The NCS 1/64 corner was set on a line between the center 1/4 corner and the 1/4 corner between Sections 27 and 34, an aliquot distance South of the center 1/4 corner.

The CN 1/16 corner was set at the midpoint of a line extending northerly from the center 1/4 corner to the 1/4 corner between Sections 27 and 22.

The northeast 1/16 corner was set by protraction of the northeast 1/4 of Section 27.

All monuments identified on the plat of Section 27, T33S, R1E WM, as "set" monuments and not herein described are points on tangent of lines connecting the subdivisional monuments.

The position of B.L.M. monuments have not received official acceptance prior to the time period of the field survey.