

# SURVEY FOR U.S. FOREST SERVICE

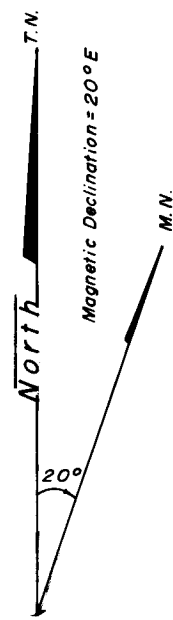
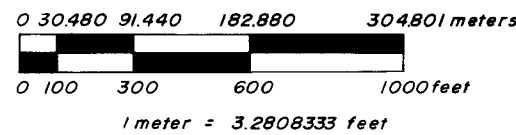
## IN SECTION 34, T.39S., R.1W., W.M., JACKSON COUNTY, OREGON

DECEMBER 1, 1981

SCALE: 1" = 500'

### Legend

- ⊙ Found Monument
- ⊙ Set Monument
- Computed Point
- ( ) Record Data
- S.V. Scribing Visible
- B&H Blazed & Healed chs. Chains
- True Line - Posted with 6ft. fence posts & U.S.F.S. boundary signs - blazed & painted.
- Ⓝ Refers to corner number in Narrative



#### N. W. CORNER

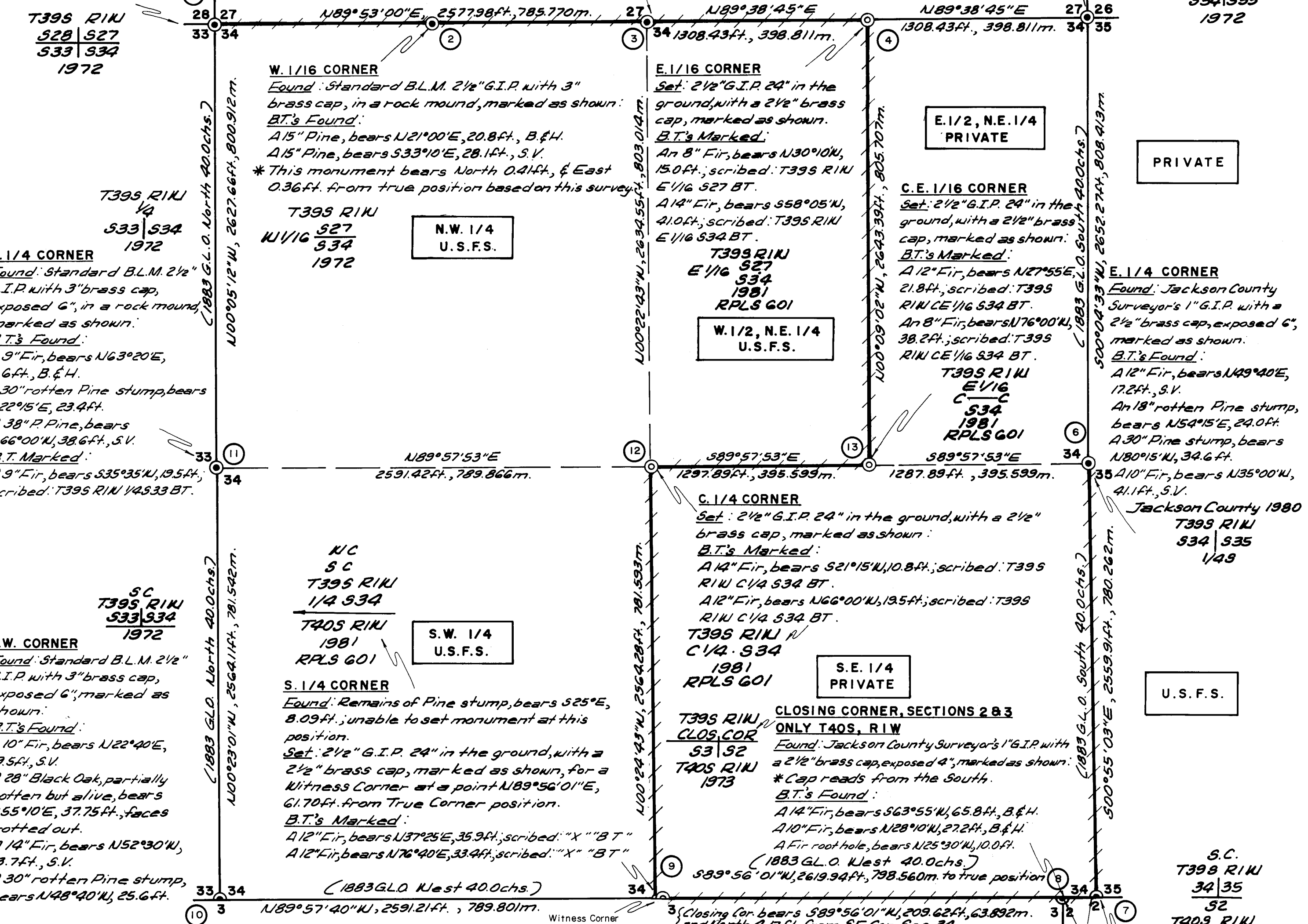
**Found:** Standard B.L.M. 2 1/2" G.I.P. with 3" brass cap, in a rock mound, marked as shown:  
**B.T.'s Found:**  
 A 12" Pine stump, fallen snag beside, bears N36°45'E, 17.9ft., S.V.  
 An 18" Pine, bears S04°00'E, 6.6ft., S.V.  
 A 20" Pine, bears S23°35'W, 20.6ft., B.&H.  
 A 50" Pine, bears N21°40'W, 13.0ft., B.&H.  
**B.T. Marked:**  
 A 24" P. Pine, bears N72°20'E, 70.9ft.; (1972 BLM. S89°53'W 39.08chs.) scribed: T39S R1W S27 BT.

#### N. 1/4 CORNER

**Found:** Standard B.L.M. 2 1/2" G.I.P. with 3" brass cap, exposed 4", in a rock mound, marked as shown:  
**B.T.'s Found:**  
 A 24" Pine, bears N27°10'E, 51.2ft., B.&H.  
 A 22" Oak snag, bears S77°00'E, 19.0ft.  
 An 18" Pine, bears S24°00'W, 30.05ft., B.&H.

#### N. E. CORNER

**Found:** Standard B.L.M. 2 1/2" G.I.P. with 3" brass cap, marked as shown:  
**B.T.'s Found:**  
 A 13" Fir, bears N73°40'E, 13.7ft., B.&H.  
 An 8" Fir, bears S63°35'E, 13.7ft., B.&H.  
 A 6" dead Fir stub, bears S27°00'E, 24.0ft.  
 An 18" Fir, bears S34°25'W, 11.9ft., B.&H.  
 A 16" Fir, bears N37°10'W, 32.8ft., B.&H.



#### W. 1/4 CORNER

**Found:** Standard B.L.M. 2 1/2" G.I.P. with 3" brass cap, exposed 6", in a rock mound, marked as shown:  
**B.T.'s Found:**  
 A 9" Fir, bears N63°20'E, 6.6ft., B.&H.  
 A 30" rotten Pine stump, bears S22°15'E, 23.4ft.  
 A 38" P. Pine, bears S66°00'W, 38.6ft., S.V.  
**B.T. Marked:**  
 A 9" Fir, bears S35°35'W, 19.5ft., scribed: T39S R1W 14 S33 BT.

#### W. 1/16 CORNER

**Found:** Standard B.L.M. 2 1/2" G.I.P. with 3" brass cap, in a rock mound, marked as shown:  
**B.T.'s Found:**  
 A 15" Pine, bears N21°00'E, 20.8ft., B.&H.  
 A 15" Pine, bears S33°10'E, 28.1ft., S.V.  
 \* This monument bears North 0.4ft., & East 0.36ft. from true position based on this survey.

#### E. 1/16 CORNER

**Set:** 2 1/2" G.I.P. 24" in the ground, with a 2 1/2" brass cap, marked as shown:  
**B.T.'s Marked:**  
 An 8" Fir, bears N30°10'W, 15.0ft., scribed: T39S R1W E 1/16 S27 BT.  
 A 14" Fir, bears S58°05'W, 41.0ft., scribed: T39S R1W E 1/16 S34 BT.

#### C.E. 1/16 CORNER

**Set:** 2 1/2" G.I.P. 24" in the ground, with a 2 1/2" brass cap, marked as shown:  
**B.T.'s Marked:**  
 A 12" Fir, bears N27°55'E, 21.8ft., scribed: T39S R1W CE 1/16 S34 BT.  
 An 8" Fir, bears N76°00'W, 38.2ft., scribed: T39S R1W CE 1/16 S34 BT.

#### E. 1/4 CORNER

**Found:** Jackson County Surveyor's 1" G.I.P. with a 2 1/2" brass cap, exposed 6", marked as shown:  
**B.T.'s Found:**  
 A 12" Fir, bears N49°40'E, 12.2ft., S.V.  
 An 18" rotten Pine stump, bears N54°15'E, 24.0ft.  
 A 30" Pine stump, bears N80°15'W, 34.6ft.  
 A 10" Fir, bears N35°00'W, 41.1ft., S.V.  
 Jackson County 1980  
 T39S R1W  
 S34 S35  
 1449

#### S. W. CORNER

**Found:** Standard B.L.M. 2 1/2" G.I.P. with 3" brass cap, exposed 6", marked as shown:  
**B.T.'s Found:**  
 A 10" Fir, bears N22°40'E, 19.5ft., S.V.  
 A 28" Black Oak, partially rotten but alive, bears S55°10'E, 37.75ft., faces rotted out.  
 A 14" Fir, bears N52°30'W, 13.7ft., S.V.  
 A 30" rotten Pine stump, bears N48°40'W, 25.6ft.

#### S. 1/4 CORNER

**Found:** Remains of Pine stump, bears S25°E, 8.09ft.; unable to set monument at this position.  
**Set:** 2 1/2" G.I.P. 24" in the ground, with a 2 1/2" brass cap, marked as shown, for a Witness Corner at a point N89°56'01"E, 61.70ft. from True Corner position.  
**B.T.'s Marked:**  
 A 12" Fir, bears N37°25'E, 35.9ft., scribed: "X" "BT"  
 A 12" Fir, bears N76°40'E, 33.4ft., scribed: "X" "BT"

#### C. 1/4 CORNER

**Set:** 2 1/2" G.I.P. 24" in the ground, with a 2 1/2" brass cap, marked as shown:  
**B.T.'s Marked:**  
 A 14" Fir, bears S21°15'W, 10.8ft., scribed: T39S R1W C 1/4 S34 BT.  
 A 12" Fir, bears N66°00'W, 19.5ft., scribed: T39S R1W C 1/4 S34 BT.  
 T39S R1W N 1981  
 C 1/4 S34  
 RPLS 601

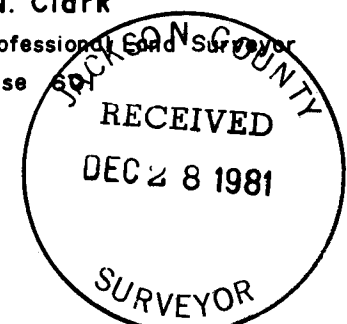
#### S. E. 1/4 PRIVATE

- #### NOTES - SECTION 34
- 1) Bearings are based on a 1972 B.L.M. survey bearing between the N 1/4 Corner and the N.W. Corner of Section 34, T.39S., R.1W., W.M.
  - 2) All B.T.'s have 6" painted red band; painted faces; an Attention sign on the back; B.T. tags.
  - 3) All new B.T.'s marked also have a 3/4" brass washer stamped RLS 601 on lower face.
  - 4) A 6ft. fence post with an Attention sign or Land Survey Monument sign was placed at each corner.
  - 5) Survey Method & Equipment: Wild-T-16, Wild-DI-4 Distomat, 78 Geodimeter, & TS10 Topcon Guppy.
  - 6) Property lines shown are marked with 6ft. posts and National Forest Boundary signs; lines are blazed and painted; - one quarter blazes are on U.S.F.S. property, and facing blazes on private property.

#### CERTIFICATE OF SURVEY

I, Malcolm N. Clark, a registered professional land surveyor in the State of Oregon, hereby certify that this plat and the notes hereon are a correct representation of a survey I performed during November, 1981, for the U.S. Forest Service, in accordance with the statutes of the State of Oregon, and with the articles of my contract.

Malcolm N. Clark  
 Registered Professional Land Surveyor  
 Oregon License No. 591



**Found:** Standard B.L.M. 2 1/2" G.I.P. with a 3" brass cap, exposed 3", marked as shown:  
**B.T.'s Found:**  
 A 12" Hemlock, bears N22°30'E, 23.7ft., S.V.  
 A 24" cut Fir stump bears S62°00'E, 23.4ft., B.&H.  
 An 18" Hemlock bears N82°05'W, 30.4ft., S.V.  
 A Fir root hole, with dead and down 15" Fir beside, bears N24°50'W, 10.6ft., S.V.  
**B.T. Marked:**  
 A 12" Hemlock, bears S51°55'E, 27.2ft., scribed: T40S R1W S22 BT.

- #### HISTORY OF SURVEYS
- 1) The South line of T39S, R1W, W.M. (9th Standard Parallel South) was surveyed by Rufus S. Moore, Contract No. 475, dated July 3, 1883; Plat approved April 10, 1884.
  - 2) Section 34 was surveyed by Rufus S. Moore, Contract No. 475, dated July 3, 1883; Plat approved April 10, 1884.
  - 3) The Bureau of Land Management made a Dependent Resurvey of the North line of Section 34 and Remonumented certain corners in T39S R1W between March 1972 & June 1974, approved September 17, 1973.

Accepted And Approved For The U.S. Forest Service  
 C.O.R. *[Signature]* 12-23-81  
 Date

Filed with this map of survey is a separate written narrative consisting of 4 pages which by reference is made a part hereof.

U.S.F.S. CONTRACT	No 53-04H1-1-8426N
CONTRACTOR IDENTIFICATION	CHICKERING-GREEN EMPIRE, INC. 360 S.E. 'H' STREET SUITE B GRANTS PASS, OREGON 97526 ph 503-474-2035



Continued:

Page 3 of 4 pages

6. Jackson County  
 T39S RTW  
 S34 | S35  
 1/4S 086L
- Found Jackson County Surveyor's 1"GIP with 2 1/2" brass cap marked as shown in the corner diagram, exposed 6".
- B.T.'s Found:  
 A 12" Fir bears N49°40'E, 17.2 ft., scribing visible  
 An 18" Pine stump, rotten, bears N54°15'E, 24.0 ft.  
 A 30" Pine stump, rotten, bears N80°15'W, 34.6 ft.  
 A 10" Fir bears N35°00'W, 41.1 ft., scribing visible
7. S.C.  
 T39S RTW  
 S34 | S35  
 S2  
 T40S RTW  
 1972
- Found Standard B.L.M. 3" GIP with 3 1/2" brass cap marked as shown in the corner diagram, exposed 6".
- B.T.'s Found:  
 A 12" Hemlock bears N22°30'E, 23.7 ft., scribing visible  
 A 24" Fir cut stump bears S62°00'E, 23.4 ft., blazed and healed  
 An 18" Hemlock bears N82°05'W, 30.4 ft., scribing visible  
 A Fir root hole, with dead and down 15" beside, bears N24°50'W, 10.6 ft., scribing visible
- New B.T. Marked:  
 A 12" Hemlock bears S51°55'E, 27.2 ft., scribed T40SR1WSC2 BT
8. T39S RTW  
 CLOS. COR.  
 S3 | S2  
 T40S RTW  
 1973
- Found Jackson County Surveyor's 1" GIP with 2 1/2" brass cap marked as shown on the corner diagram, exposed 4". (Cap faces South instead of North).
- B.T.'s Found:  
 A 14" Fir bears S63°55'W, 65.8 ft., blazed and healed  
 A 10" Fir bears N28°10'W, 27.2 ft., blazed and healed  
 A Fir root hole bears N25°30'W, 10.0 ft.
9. W.C.  
 S.C.  
 T39SR1W  
 1/4S34  
 ← T40SR1W  
 1981  
 RPLS 601
- Found near the corner position, a badly weathered granite stone of original called dimension (14"x12"x4"), out of the way from canal construction. The position of the stone did not fit the remains of the Pine stump however.
- Original B.T. Found:  
 The remains of the original SE B.T., a Pond. Pine rotten stump bears record S25°00'E, 8.09 ft., to center of stump.
- Set a Witness Corner, a 2 1/2" GIP, 24" in the ground, with a 2 1/2" brass cap marked as shown in the corner diagram.
- B.T.'s marked; to reference the Witness Corner:  
 A 12" Fir bears N37°25'E, 35.9 ft., scribed 'BT' in lower face and a chopped 'X' BH  
 A 12" Fir bears N76°40'E, 33.4 ft., scribed 'BT' in lower face and a chopped 'X' BH

Corners  $\frac{\text{Found}}{\text{Set}}$  in this survey.

Page 2 of 4 pages

1.
 

T39S	R1W
$\frac{S28}{S33}$	$\frac{S27}{S34}$
1972	

Found Standard B.L.M. 2 1/2" GIP with 3" brass cap marked as shown in the corner diagram, exposed 8" in rock mound.

B.T.'s Found:

A 12" Pine stump bears N36°45'E, 17.9 ft., scribing on fallen snag beside stump  
 An 18" Pine bears S04°00'E, 6.6 ft., scribing visible  
 A 20" Pine bears S23°35'W, 20.6 ft., blazed and healed  
 A 50" Pine bears N21°40'W, 13.0 ft., blazed and healed

New B.T. Marked:

A 24" P. Pine bears N74°20'E, 70.9 ft., scribed T39SR1WS27 BT
  
2.
 

T39S	R1W
W1/16	$\frac{S27}{S34}$
1972	

Found a Standard B.L.M. 2 1/2" GIP with 3" brass cap marked as shown in the corner diagram, exposed 8".

B.T.'s Found:

A 15" Pine bears N21°00'E, 20.8 ft., blazed and healed  
 A 15" Pine bears S33°10'E, 28.1 ft., scribing visible
  
3.
 

T39S	R1W
1/4	$\frac{S27}{S34}$
1972	

Found Standard B.L.M. 2 1/2" GIP with 3" brass cap marked as shown in the corner diagram, exposed 4" in mound of rock.

B.T.'s Found:

A 24" Pine bears N27°10'E, 51.2 ft., blazed and healed  
 A 22" Oak snag bears S77°00'E, 19.0 ft.  
 An 18" Pine bears S24°00'W, 30.05 ft., blazed and healed
  
4.
 

T39S	R1W
E1/16	$\frac{S27}{S34}$
1981	
RPLS 601	

At a position mid point between the N 1/4 corner and the NE corner of Section 34, I set a 2 1/2" GIP, 24" in the ground, with a 2 1/2" brass cap marked as shown in the corner diagram.

B.T.'s Marked:

An 8" Fir bears N30°10'W, 15.0 ft., scribed T39SR1WE1/16S27 BT  
 A 14" Fir bears S58°05'W, 41.0 ft., scribed T39SR1WE1/16S34 BT
  
5.
 

T39S	R1W
$\frac{S27}{S34}$	$\frac{S26}{S35}$
1972	

Found Standard 2 1/2" B.L.M. GIP with 3" brass cap marked as shown in the corner diagram, exposed 5".

B.T.'s Found:

A 13" Fir bears N73°40'E, 13.7 ft., blazed and healed  
 An 8" Fir bears S69°35'E, 13.7 ft., blazed and healed  
 A 6" dead Fir stub bears S27°00'E, 24.0 ft.  
 An 18" Fir bears S34°25'W, 11.9 ft., blazed and healed  
 A 16" Fir bears N37°10'W, 32.8 ft., blazed and healed

Survey Number 9139

Page 1 of 4 pages

Survey Narrative to Comply with O.R.S. 209.250

Location: Section 34, Township 39 South, Range 1 West, Willamette Meridian

Survey for: U. S. Forest Service, Rogue River National Forest  
Medford, Oregon  
Red Greeley Cadastral Survey  
Contract Number 53-04H1-1-8426N

Survey by: CHICKERING-GREEN EMPIRE, INC.  
360 S. E. "H" St.  
Grants Pass, Oregon 97526  
(Malcolm N. Clark, RLS 601)

Date: October 15, 1981

Equipment: Wild T-16, Wild DI-4 Distomat and Topcon Guppy

Purpose: To blaze and post the boundaries of the U. S. Forest Service land in Section 34, and to re-monument the South Quarter Section Corner of Section 34 only, and various property corners of the U. S. Forest Service lands in Section 34, Township 39 South, Range 1 West, Willamette Meridian.

Procedure: Basis for bearing for this survey is the Bureau of Land Management 1972 record bearing of the line between the North Quarter Section Corner and the Northwest Corner of Section 34, Township 39 South, Range 1 West, Willamette Meridian. The South Quarter Section Corner was re-monumented from original evidence. The Section was subdivided as shown on the map in accordance to the B.L.M. Manual of Surveying Instructions, 1973.

The Township line between Townships 39 and 40 South (9th Standard Parallel South) was surveyed by Rufus S. Moore, plat approved April 10, 1884.

The subdivision of Township 39 South, Range 1 West was performed by Rufus S. Moore, plat approved April 10, 1884.

A series of closed random traverses were ran to tie in controlling monuments and in the approximate locations of property lines to be marked. Offsets from the random lines were made to the property lines which was blazed, painted and posted with 6 foot fiberglass fence posts with National Forest boundary signs.

All B.T.'s found or set have a 6" red band of paint, B.T. tags and Attention Signs. An Attention Sign or Land Survey Monument Sign was set at each corner surveyed to or set. All new B.T.'s marked have a 3/4" brass washer stamped 'LS601' nailed on the lower face.