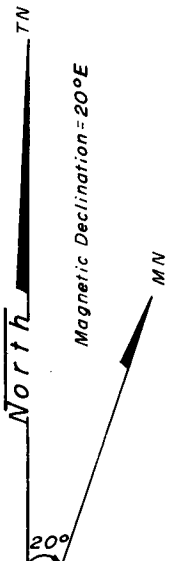
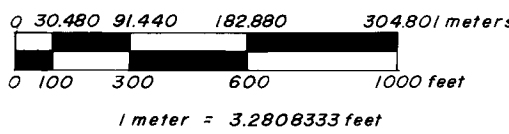


# SURVEY FOR U.S. FOREST SERVICE

## Section 30, T.40S., R.1W., Jackson County, Oregon

October 15, 1981

Scale: 1" = 500'



### Legend

- Found Monument
- ⊙ Set Monument
- Computed Point
- ( ) Record Data
- True Line - Posted with 6ft. fence posts & U.S.F.S. boundary signs - blazed & painted.
- (NS) Refers to corner number in Narrative.
- RS NS - Record Survey Number

### History of Surveys

- 1) The Range line of T40S, R1W & R2W was surveyed by McKenzie & Eckelson, Contract No 328, dated June 17, 1879; Plat approved April 10, 1881.
- 2) Section 30 was surveyed by Rufus S. Moore, Contract No 475, dated July 3, 1883; Plat approved April 10, 1884.
- 3) Section 30 was subdivided by Edward McGinty P.L.S. No 301, November 7, 1963 R.S. No 5506.

"Marked as shown"

T40S  
R2W R1W  
S24 S19  
S25 S30  
CS  
1977

Found: 2 1/2" brass cap on a 1" G.I.P. in a mound of rocks.

BT's Found:

28" T. Fir, bears N24°05'E, 20.9ft.

12" D. Fir, bears N34°00'E, 40.5ft, scribed, CS BT.

27" D. Fir, bears S88°10'E, 15.9ft, scribed, CS BT.

16" Fir, Windfall, bears S76°25'E, 5.4ft, scribing visible.

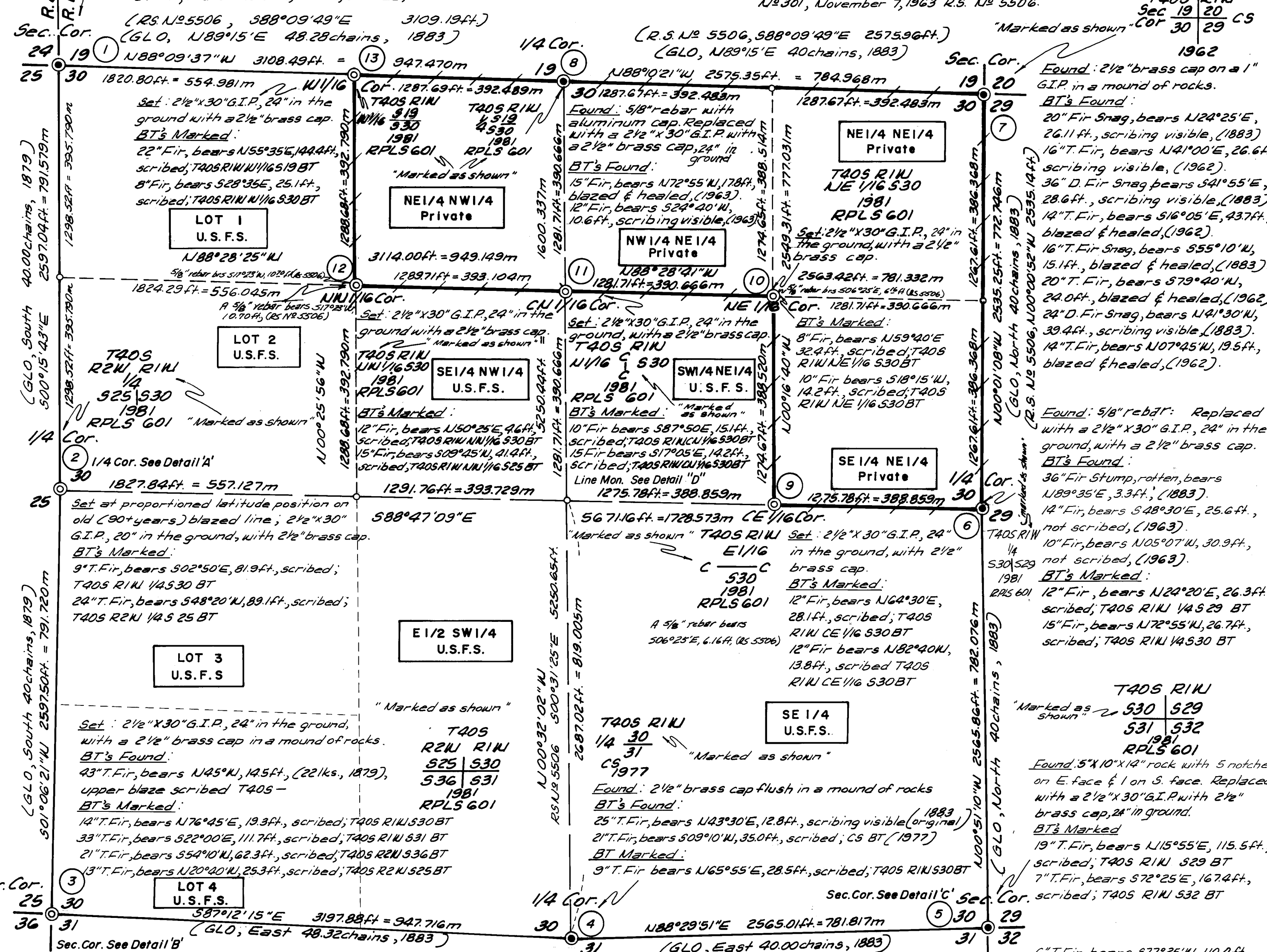
75" T. Fir, bears S09°30'W, 18.5ft, blazed & healed.

10" T. Fir, bears S53°35'W, 48.3ft, scribed, CS BT.

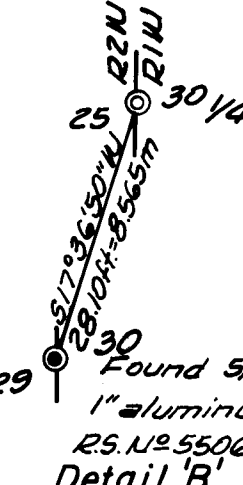
10" D. Fir, bears S48°00'W, 15.2ft, scribing visible.

25" T. Fir, bears N68°10'W, 25.1ft, blazed & healed.

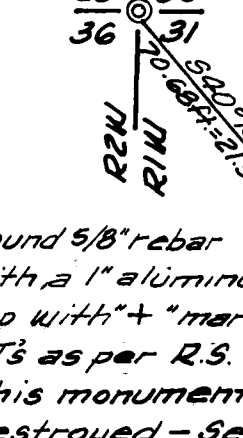
24" T. Fir, bears N23°30'W, 24.0ft, scribed, CS BT.



### Detail 'A'



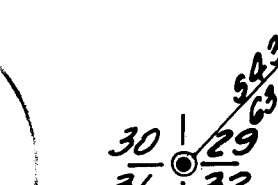
### Detail 'B'



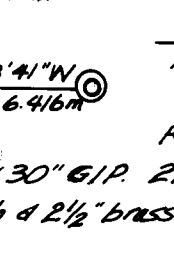
### Notes - Section 30

- 1) Bearings are based on a solar observation near the West 1/4 Corner of Section 30.
- 2) All BT's have 6" painted red band; painted faces; an Attention sign on the back; BT tags.
- 3) All new BT's marked also have a 3/4" brass washer stamped LS 601 on lower face.
- 4) A 6ft. fence post with either an Attention sign, or a Land Survey Monument sign was placed at each corner.
- 5) Survey Method & Equipment: Wild-T-16, Wild-DI-4 Distomat.
- 6) Property lines shown are marked with 6ft. posts & National Forest Boundary signs.
- 7) Survey Narrative contains description of corners set or found, accessories, ties at corners, and other monuments found at corner locations.

### Detail 'C'



### Detail 'D'



### Certificate of Survey

I, Malcolm N. Clark, a registered professional land surveyor in the State of Oregon, hereby certify that this plat and the notes hereon are a correct representation of a survey I performed during September, 1981, for the U.S. Forest Service, in accordance with the Statutes of the State of Oregon, and with the articles of my contract.

REGISTERED PROFESSIONAL LAND SURVEYOR

Malcolm N. Clark  
OREGON  
JULY 12, 1963  
MALCOLM N. CLARK  
601

Malcolm N. Clark  
Registered Professional Land Surveyor  
Oregon License 601

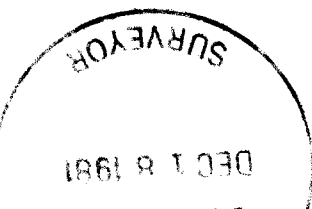
Filed with this map of survey is a separate written narrative consisting of 5 pages which by reference is made apart here of.

Accepted And Approved For The U.S. Forest Service

H. J. [Signature]  
C. O. R.

12-11-81  
Date

U.S.F.S. CONTRACT	No 53-04HI-1-8426N
CONTRACTOR IDENTIFICATION	
CHICKERING-GREEN EMPIRE, INC. 360 S.E. 'H' STREET SUITE B GRANTS PASS, OREGON 97526 ph 503-474-2035	



Corners set in this survey:

Page 5 of 5 pages

12. T40 R1W  
NW1/16 • S30  
1981  
RPLS 601
- Set a 2 1/2" x 30" GIP, set 24" in the ground with a 2 1/2" brass cap marked as shown. A 5/8" rebar brs. S17°23'W, 10.70 ft., (RS N<sup>o</sup> 5506)  
B.T.'s marked:  
A 12" Fir brs. N50°25'E, 4.6 ft., scribed T40S R1W NW 1/16 S30 BT'  
A 15" Fir brs. S09°45'W, 41.4 ft., scribed T40S R1W NW 1/16 S30 BT
13. T40S R1W  
W1/16  $\frac{S19}{S30}$   
1981  
RPLS 601
- Set a 2 1/2" x 30" GIP, set 24" in the ground in a mound of rock, with a 2 1/2" brass cap marked as shown.  
B.T.'s marked:  
A 22" Fir brs. N55°35'E, 144.4 ft., scribed 'T40S R1W W 1/16 S19 BT'  
An 8" Fir brs. S28°25'E, 25.1 ft., scribed 'T40S R1W W 1/16 S30 BT'

REGISTERED  
PROFESSIONAL  
LAND SURVEYOR

*Malcolm N. Clark*

OREGON  
JULY 12, 1963  
MALCOLM N. CLARK  
601

Corners set in this survey:  
fnd

Page 4 of 5 pages

7. T40S R1W  
Sec 19 | 20 CS  
Cor 30 | 29  
1962
- Found a 2 1/2" brass cap, marked as shown on corner diagram, on a 1" GIP in mound of rocks.
- B.T.'s found:
- A 20" Fir snag brs. N24°25'E, 26.10 ft., scribing visible (1883)
  - A 16" True Fir brs. N41°00'E, 26.60 ft., scribing visible (1962)
  - A 36" D. Fir Snag brs. S41°55'E, 28.6 ft., scribing visible (1883)
  - A 14" True Fir brs. S16°05'E, 43.7 ft., blazed and healed (1962)
  - A 16" True Fir snag brs. S55°10'W, 15.1 ft., blazed & healed (1883)
  - A 20" True Fir brs. S79°40'W, 24.0 ft., blazed and healed (1962)
  - A 24" D. Fir Snag brs. N41°30'W, 39.4 ft., scribing visible (1883)
  - A 14" True Fir brs. N07°45'W, 19.5 ft., blazed and healed (1962)
8. T40S R1W  
1/4 S19  
S30  
1981  
RPLS 601
- Found a 5/8" rebar set by Edward A. McGinty, PLS 301, per recorded survey No. 5506 by proportionate methods and being within allowable limits.
- I set a 2 1/2" x 30" GIP, set 24" in the ground with a 2 1/2" brass cap marked as shown.
- B.T.'s marked:
- A 15" Fir brs. N72°55'W, 17.8 ft., blazed and healed
  - A 12" Fir brs. S24°40'W, 10.6 ft., scribing visible
9. T40S R1W  
E 1/16  
C — C  
S30  
1981  
RPLS 601
- Set a 2 1/2" x 30" GIP, set 24" in the ground, with 2 1/2" brass cap marked as shown. A 5/8" rebar brs. S06°25'E 6.16 ft., (RS N<sup>o</sup> 5506)
- B.T.'s marked:
- A 12" Fir brs. N64°30'E, 28.1 ft., scribed 'T40S R1W CE 1/16 S30 BT'
  - A 12" Fir brs. N82°40'W, 13.8 ft., scribed 'T40S R1W CE 1/16 S30 BT'
10. T40 R1W  
NE 1/16 S30  
1981  
RPLS 601
- Set a 2 1/2" x 30" GIP, 24" in the ground with a 2 1/2" brass cap marked as shown.
- B.T.'s marked:
- An 8" Fir brs. N59°40'E, 32.4 ft., scribed 'T40S R1W NE1/16 S30 BT'
  - A 10" Fir brs. S18°15'W, 14.2 ft., scribed 'T40S R1W NE1/16 S30 BT'
11. T40S R1W  
C  
N 1/16 | S30  
C  
1981  
RPLS 601  
LINE  
MON  
1981  
RPLS 601
- Set a 2 1/2" x 30" GIP, set 24" in the ground with a 2 1/2" brass cap marked as shown. Set a 2 1/2" x 30" GIP 21" in the ground with a 2 1/2" brass cap as a line monument
- B.T.'s marked:
- A 10" Fir brs. S87°50'E, 15.1 ft., scribed 'T40S R1W CN 1/16 S30 BT'
  - A 15" Fir brs. S17°05'E, 14.2 ft., scribed 'T40S R1W CN 1/16 S30 BT'
- Line Monument bears S88°28'41"E, 21.05 ft.

Corners set in this survey:  
fnd

Page 3 of 5 pages

4. Found a 2 1/2" brass cap flush with the ground, in a mound of stones.
- T40S R1W  
1/4S  $\frac{30}{31}$   
CS  
1977
- B.T.'s found:  
A 25" T. fir brs. N43°30'E, 12.8 ft., open, scribed (1883)  
A 21" T. fir brs. S09°10'W, 35.0 ft., scribed CS BT (1977)
- B.T. marked:  
A 9" T. fir brs. N65°55'E, 28.5 ft., scribed T40S R1W S30 BT
5. Original corner evidence found:
- T40S R1W  
S30|S29  
S31|S32  
1981  
RPLS 601
- Found, at record (slope) distance calls to creeks South and East, the 14"x10"x5" rock, firmly set 9" in the ground with 5 notches on the East face and 1 notch on the South face.
- Replaced rock with a 2 1/2" x 30" GIP, set 24" in the ground, with a 2 1/2" brass cap marked as shown.
- BT's marked or found  
A 20" T. Fir brs. N66°40'W, 192.7 ft., scribed T40S R1W S30 BT  
A 19" T. fir bears N15°55'E, 115.5 ft., scribed T40S R1W S29 BT  
A 7" T. fir bears S72°25'E, 167.4 ft., scribed T40S R1W S32 BT  
A 6" T. fir bears S77°25'W, 110.4 ft., scribed "CS BT" (1963)
- Section corner set by Edward A. McGinty, PLS 301, per recorded survey No. 5506, bears S43°48'08"W, 63.69 ft., being a 1" iron pipe.
6. Found a 5/8" rebar in mound of stones set by Edward A. McGinty, PLS 301, per recorded survey No. 5506 from original evidence.
- T40S R1W  
1/4  
S30|S29  
1981  
RPLS 601
- At the rebar position I set a 2 1/2" x 30" GIP, set 24" in the ground, with a 2 1/2" brass cap marked as shown. Placed rock alongside.
- Original B.T found:  
A 36" Fir stump brs. N89°35'E, 3.3 ft. (rotten)
- Other B.T.'s found:  
A 14" fir brs. S48°30'E, 25.6 ft., blazed, not scribed  
A 10" fir brs. N5°07'W, 30.9 ft., blazed, not scribed
- B.T.'s marked:  
A 12" Fir brs. N24°20'E, 26.3 ft., scribed 'T40S R1W S29 BT'  
A 15" Fir brs. N72°55'W, 26.7 ft., scribed 'T40S R1W S30 BT'

Corners set in this survey:

1. fnd
- Found a 2 1/2 " brass cap on a 1" GIP in a mound of stones.
- B.T.'s found:
- |              |   |
|--------------|---|
| T40S         | A 28" T. fir brs. N24°05'E, 20.9 ft.                    |
| R2W      R1W | A 12" D. fir brs. N34°00'E, 40.5 ft., scribed CS BT     |
| S24   S19    | A 27" D. Fir brs. S88°10'E, 15.9 ft., scribed CS BT     |
| S25   S30    | A 16" Fir windfall brs S76°25'E, 5.4 ft., scribed       |
| CS           | A 75" D. fir brs S09°30'W, 18.5 ft., blazed and healed  |
| 1977         | A 10" T. fir brs. S30°35'W, 48.3 ft., scribed CS BT     |
|              | A 10" DF snag brs. S48°00'W, 15.2 ft., scribed          |
|              | A 25" T. fir brs. N68°10'W, 25.1 ft., blazed and healed |
|              | A 24" T. fir brs. N23°30'W, 24.0 ft., scribed CS BT     |
- 2.
- |              |  |
|--------------|--|
| T40S         | Set at proportioned latitude position on an old (90+ yr)   |
| R2W      R1W | North-South blazed line, a 2 1/2" x 30" GIP, set 20" in    |
| 1/4          | the ground with a 2 1/2" brass cap marked as shown.        |
| S25   S30    | B.T.'s marked:   |
| 1981         | A 9" True Fir brs. S02°50'E, 81.9 ft., scribed T40S, R1W,  |
| RPLS 601     | 1/4 S30 BT   |
|              | A 24" True Fir brs. S48°20'W, 89.1 ft., scribed T40S, R2W, |
|              | 1/4 S25 BT   |
|              | Quarter Section Corner set by Edward A McGinty, PLS 301,   |
|              | per recorded survey No. 5506, brs. S17°36'50"W, 28.10 ft., |
|              | being a 5/8" rebar with 1" aluminum cap                    |
- 3.
- |              |   |
|--------------|---|
| T40S         | At the corner position, set a 2 1/2" x 30" GIP, set 24" in  |
| R2W      R1W | the ground with a 2 1/2" brass cap marked as shown.         |
| S25   S30    | Original B.T. found:  |
| S36   S31    | 43" True Fir N45°W, 14.5 ft., (22 links, 1879 record) with  |
| 1981         | upper blaze scribe "T40S - "                                |
| RPLS 601     | B.T.'s marked:  |
|              | A 14" True Fir bears N76°45'E, 19.3 ft., scribed 'T40S R1W  |
|              | S30 BT'   |
|              | A 33" True Fir brs. S22°00'E, 111.7 ft., scribed 'T40S R1W  |
|              | S31 BT'   |
|              | A 21" True Fir brs S54°10'W, 62.3 ft., scribed 'T40S R2W    |
|              | S36 BT'   |
|              | A 13" True Fir brs N20°40'W, 25.3 ft., scribed 'T40S R2W    |
|              | S25 BT'   |
|              | Section corner set by Edward A. McGinty, PLS 301, per       |
|              | recorded survey No. 5506, bears S40°10'40"E, 70.68 feet,    |
|              | being a 5/8" rebar with a 1" aluminum cap. Inadvertently    |
|              | destroyed. This corner very loose in a large mound of stone |
|              | and destroyed during search for evidence.                   |

Survey Number **9121**

Page 1 of 5 pages

Survey Narrative to Comply with O.R.S. 209.250

Location: Section 30, Township 40 South, Range 1 West, Willamette Meridian

Survey For: U.S. Forest Service, Rogue River National Forest  
Medford, Oregon  
Red Greeley Cadastral Survey  
Contract Number 53-04H1-1-8426N

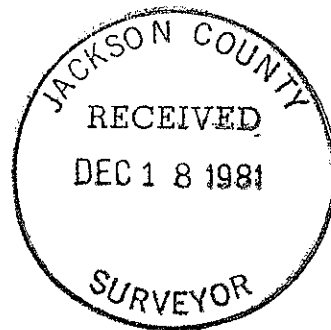
Survey By: CHICKERING-GREEN EMPIRE, INC.  
360 S. E. "H" St.  
Grants Pass, Oregon 97526  
(Malcolm N. Clark, RLS 601)

Date: October 15, 1981

Equipment: Wild T-16 and Wild DI-4 Distomat

Purpose: To blaze and post the boundaries of the U.S. Forest Service land in Section 30, and to re-establish the one-quarter corner between Section 30, Township 40 South, Range 1 West and Section 25, Township 40 South, Range 2 West, Willamette Meridian and various property corners of the U.S. Forest Service lands in Section 30.

Procedure: Basis of bearing is a solar observation taken near the West one-quarter corner of Section 30, Township 40 South, Range 1 West, Willamette Meridian. The West one-quarter of Section 30 was set at proportionate latitude distance on an old (90 + years) blazed line held for departure control, after a search for other original evidence as made. The West one-sixteenth corner was set at proportionate distance on line between the North one-quarter and the Northwest corners of Section 30. The Section was then subdivided as shown on the map in accordance to the B.L.M. Manual of Surveying Instructions, 1973.



The Range line of Township 40 South, Range 1 West and Range 2 West, Willamette Meridian, was surveyed by McKenzie and Eckelson, plat approved April 10, 1881. The subdivision of Township 40 South, Range 1 West, Willamette Meridian, was performed by Rufus S. Moore, plat approved April 10, 1884. Both plats were used as the basis of proportions.

Section 30 was later subdivided by Edward A. McGinty, PLS 301, as shown in Recorded Survey No. 5506, Jackson County Surveyor's Office, filed November 7, 1963.

A closed random traverse was run in the approximate location of property lines to be marked. Offsets from the random lines were made to the property line which was blazed, painted and posted with 6 foot fiberglass fence posts with National Forest boundary signs.

All B.T.'s found or set have a 6" red band of paint, B.T. tags and Attention Signs. An Attention Sign or a Land Survey Monument Sign was set at each corner surveyed to or set. All new B.T.'s marked have a 3/4" brass washer stamped "LS601" nailed on the lower face.