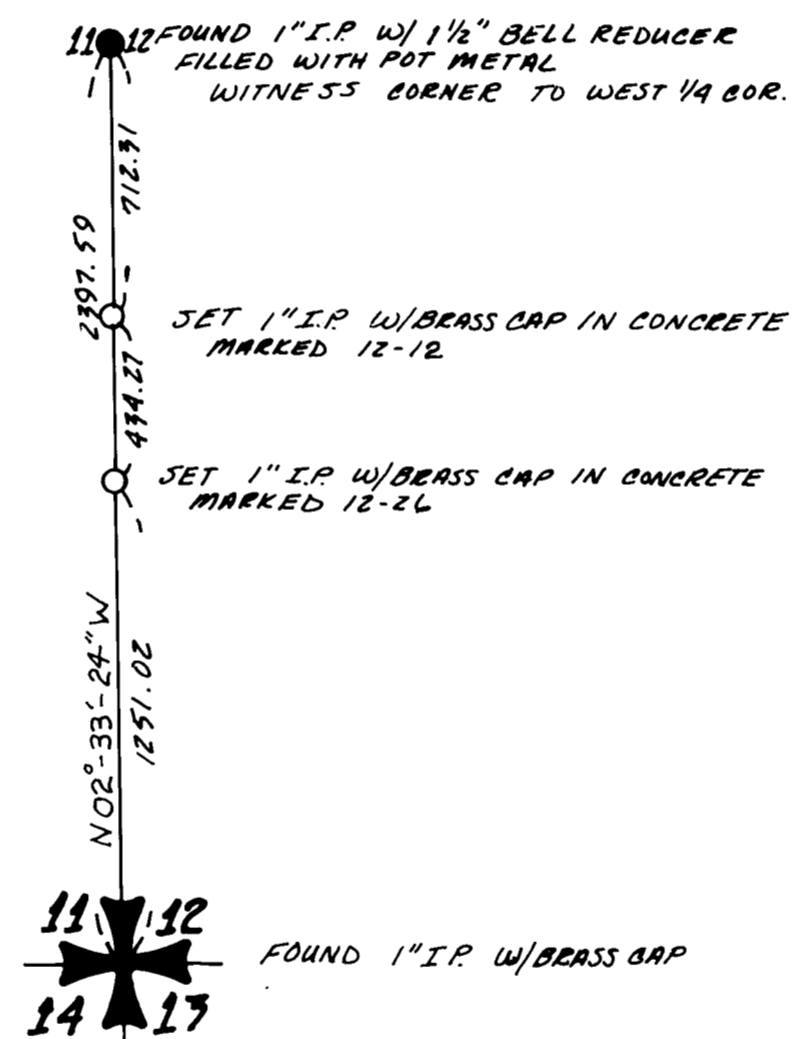


# SURVEY OF A PORTION OF THE WEST LINE OF THE SW 1/4 OF SECTION 12, T. 33 S., R. 2 E., W.M.

## SURVEY NARRATIVE

A CLOSED LOOP RANDOM TRAVERSE WAS COMPLETED EXCEEDING 1 in 20000 ACCURACY CRITERIA WITH 4-SECOND ANGULAR REJECTION LIMITS. THE TRAVERSE PASSED THROUGH THE WITNESS CORNER TO THE WEST 1/4 CORNER OF SECTION 12, T. 33 S., R. 2 E., W.M. AND THE SOUTHWEST SECTION CORNER. BOTH CORNERS WERE FRESHLY REFERENCED AND EASILY IDENTIFIED FROM SURVEYS OF RECORD. TWO BRASS DISC MONUMENTS WERE SET IN 1-INCH IRON PIPE AND CONCRETE ON THE WEST LINE OF THE SOUTHWEST 1/4 OF SECTION 12 EQUIDISTANT FROM THE CENTER-LINE OF THE HIGH WATER MARKS ON THE SOUTH FORK OF THE RDGUE RIVER TRIBUTARY TO LOST CREEK RESERVOIR.



### TRUE BEARINGS

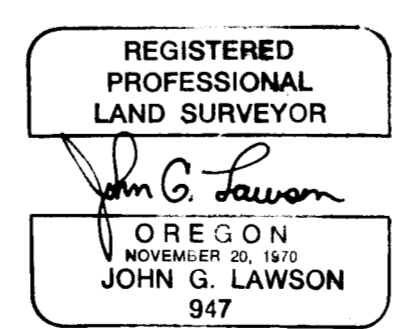
BASIS OF BEARINGS U.S. ARMY CORPS OF ENGINEERS SURVEY MONUMENTS SHOULDER and GUARDRAIL

### LEGEND

- = SET 1" IP WITH BRASS CAP (U.S. ARMY CORPS OF ENGINEERS) IN CONCRETE
- = FOUND MONUMENTS

### SURVEYOR'S CERTIFICATE

This map correctly represents a survey made by me or under my direction in conformance with the requirements of ORS 209.250 at the request of U.S. Army Corps of Engineers in Sept, 1981.



**LWS LAWSON LAND SURVEYING**  
 Y-PLAZA 14612-A 4th PLAIN RD.  
 VANCOUVER, WASHINGTON 98662  
 PHONE 1-(206)-256-8008

SCALE 1" = 500' DRAWN BY MAE JOB No 80-81  
 DATE 15 OCT. 1981 CHECKED BY EAS SHEET 1 OF 1

OFFICE OF THE  
SURVEYOR



EDWARD A. MCGINTY  
REGISTERED SURVEYOR NO. 301

9112

JACKSON COUNTY COURTHOUSE  
ROOM 305  
MEDFORD, OREGON  
97501  
November 23, 1981

Lawson Land Surveying  
Y-Plaza 14612 - A 4th Plain Rd.  
Vancouver, Washington 98662

RE: Survey for Corp., Sec. 11, 12, T33S,R2E.

Dear John:

On your recent survey for the US Army Corps., the map indicates the bearing shown thereon; "as being true bearing", meaning it was determined by solar observation, or some known bearing, grid bearing which was rotated to true bearing at corner of Sections 11,12,13 and 14. In as much there is some doubt as basis of bearing, how it was determined or what was used. I request a narrative supplement, explaining more in detail the determination of your bearing. It does appear the possibility that actual bearing shown is a grid bearing computed from Army Corp. coordinates, if so, state so or if not state grid angle rotation used to determined the true bearing.

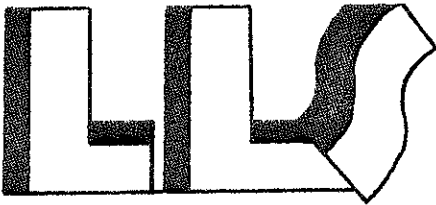
Appreciate your immediate response to this matter. Filing of this survey is pending your response.

Sincerely,

Edward A. McGinty  
County Surveyor

EAM/sk

9112



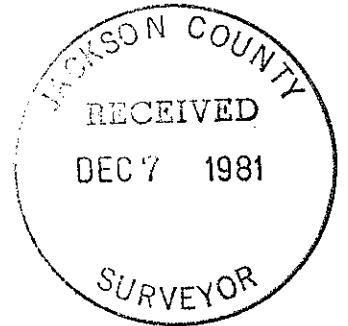
LAWSON  
LAND SURVEYING

- Land Surveying
- Professional Engineering

14612-A Fourth Plain Road Vancouver, WA 98662 (206) 256-8008

December 2, 1981

Mr. Edward A. McGinty  
County Surveyor  
Office of the Surveyor  
Jackson County Courthouse  
Room 305  
Medford, OR 97501

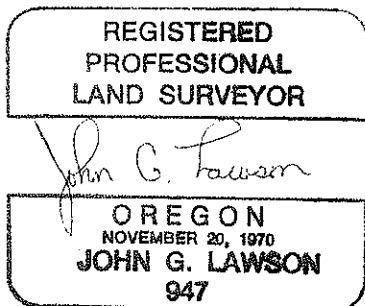


Dear Mr. McGinty,

SURVEY NARRATIVE SUPPLEMENT

Southwest one-quarter of Section 12, Township 33 South, Range 2 East, Willamette Meridian; Plat dated October 15, 1981; Surveyed September, 1981 at the request of U.S. Army Corps of Engineers.

In reference to your letter of November 23, 1981 regarding the basis of bearings on our survey for the U.S. Army Corps of Engineers, Sections 11 and 12, Township 33 South, Range 2 East, Willamette Meridian, the bearings are indeed true bearings. The random closed loop traverse passed through U.S. Army Corps of Engineers survey monuments "SHOULDER" and "GUARDRAIL": Actual bearings shown are true bearings computed from Army coordinates for those monuments. Theta ( $\theta$ ) was determined as (-)  $01^{\circ} 23' 41''$ ; geodetic azimuth as North  $02^{\circ} 33' 24''$  West.



Sincerely,

John G. Lawson, Professional Land Surveyor #947

Signed this date: 3 December 1981