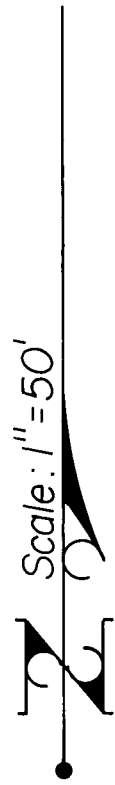


### Survey for JOHN FORD

Located in the SW 1/4 of Sec. 25, T.37S., R.2W., W.M., Jackson Co., Oregon; being Lots 9 and 10, Block I of ROSE PARK ADDITION to the City of Medford

Sept. 24, 1981

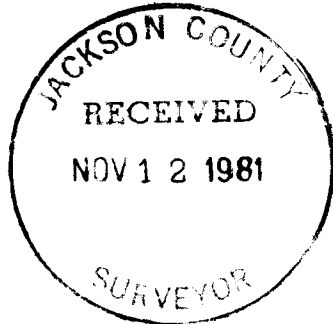
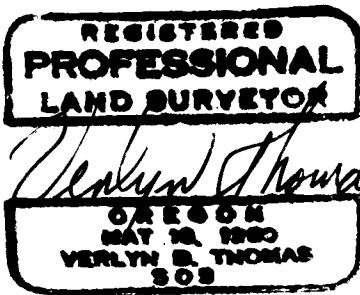
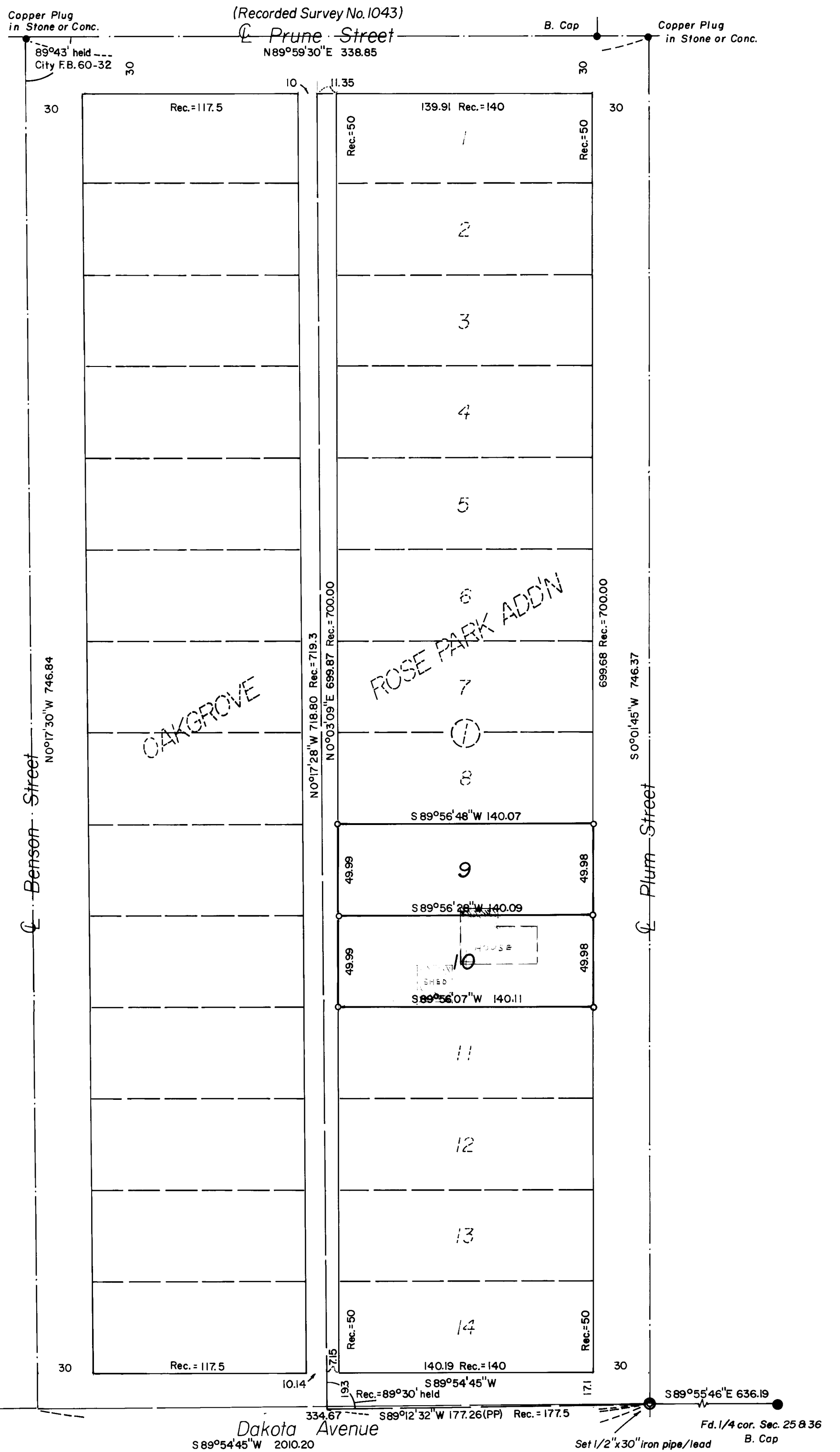


#### LEGEND

- Set 5/8" x 24" iron pin
- Found mon. of record

#### BASIS OF BEARINGS

Recorded Survey No. 1043



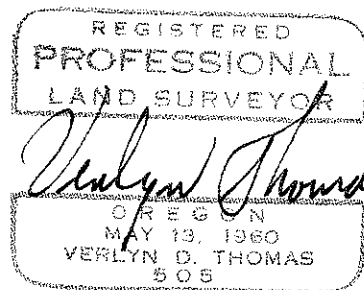
9081

SURVEY NO. \_\_\_\_\_

Page 3 of 3

Lots 9 and 10, Block 1 were then monumented at pro-rate dimensions within the above described boundaries.

Verlyn Thomas  
Professional Land Surveyor  
304 South Holly  
Medford, Ore. 97501  
Phone 773-8866



With these inconsistencies of record, it is difficult at this point in time for a surveyor to retrace the original "tracks" of surveyor Rhodes.

The following procedure was therefore followed for reestablishing the outside boundaries of Rose Park Addition. A traverse was conducted from the Quarter corner of Section 25 and 36, to the stone monumenting the Initial Point of Frances Addition. Frances Addition was also surveyed by C.F. Rhodes, in March, 1911.

The location for the monument at Plum and Dakota was reestablished from City of Medford reference points described in Field Book 256, page 52. At this reestablished point, we set a 1/2" x 30" iron pipe with lead plug and tack.

The center-line of Benson Street was established holding the City of Medford 1912 record angle at the stone monument with copper plug at Benson and Prune Streets. See City Field Book 60, page 32.

The westerly boundary of Rose Park Addition was established at pro-rated distance between Benson and Plum Streets. The westerly line of Block 1 was then established at record distance from this line (i.e. 11.35 feet at the northwest corner, and 7.15 feet at the southwest corner).

The plat record interior angle at the southwest corner of Rose Park Addition was held to the monument at Plum and Dakota, and the plat record distance of 17.1 feet used to establish the southeast corner of Block 1.

SURVEY NO. 9081

Page 1 of 3

SURVEY NARRATIVE TO COMPLY WITH O.R.S. 209.250

SURVEY FOR: John Ford  
604 Plum  
Medford, Oregon

PURPOSE: To survey and monument Lots 9 and 10, Block 1, ROSE PARK  
ADDITION to City of Medford.

PROCEDURE: Rose Park Addition, and the adjacent Oakgrove Subdivision  
were both surveyed by C.F. Rhodes in May, 1909. Block 1 of  
Rose Park Addition, and Oakgrove Subdivision are both resub-  
divisions of blocks in Nickell Addition, platted in 1889.  
The plat and dedication for Nickell Addition clearly state  
the south boundary of the subdivision at this point to be the  
section line between Sections 25 and 36. Yet Rhodes, in the  
plat of Rose Park Addition, indicates an angle point in the  
south boundary at Plum Street. He also plats the boundaries  
of Block 1 on an alignment not parallel with the westerly or  
southerly boundaries of the dedicated boundaries. For the  
west boundary of Rose Park Addition, he states a bearing of  
South 0° 20' East, and for the south boundary of Block 1,  
North 89° 10' East. Yet for the dedication and plat of Oak-  
grove Subdivision, platted the same month, he calls these bear-  
ings South and East, respectively.

Along the north line of Block 1, Rose Park Addition, Rhodes  
plats the block at 140.0 feet, and the alley at 11.35 feet,  
with Plum Street at 30.0 feet, for a total of 181.35 feet,  
yet his outside boundary dimension is 181.55 feet.

