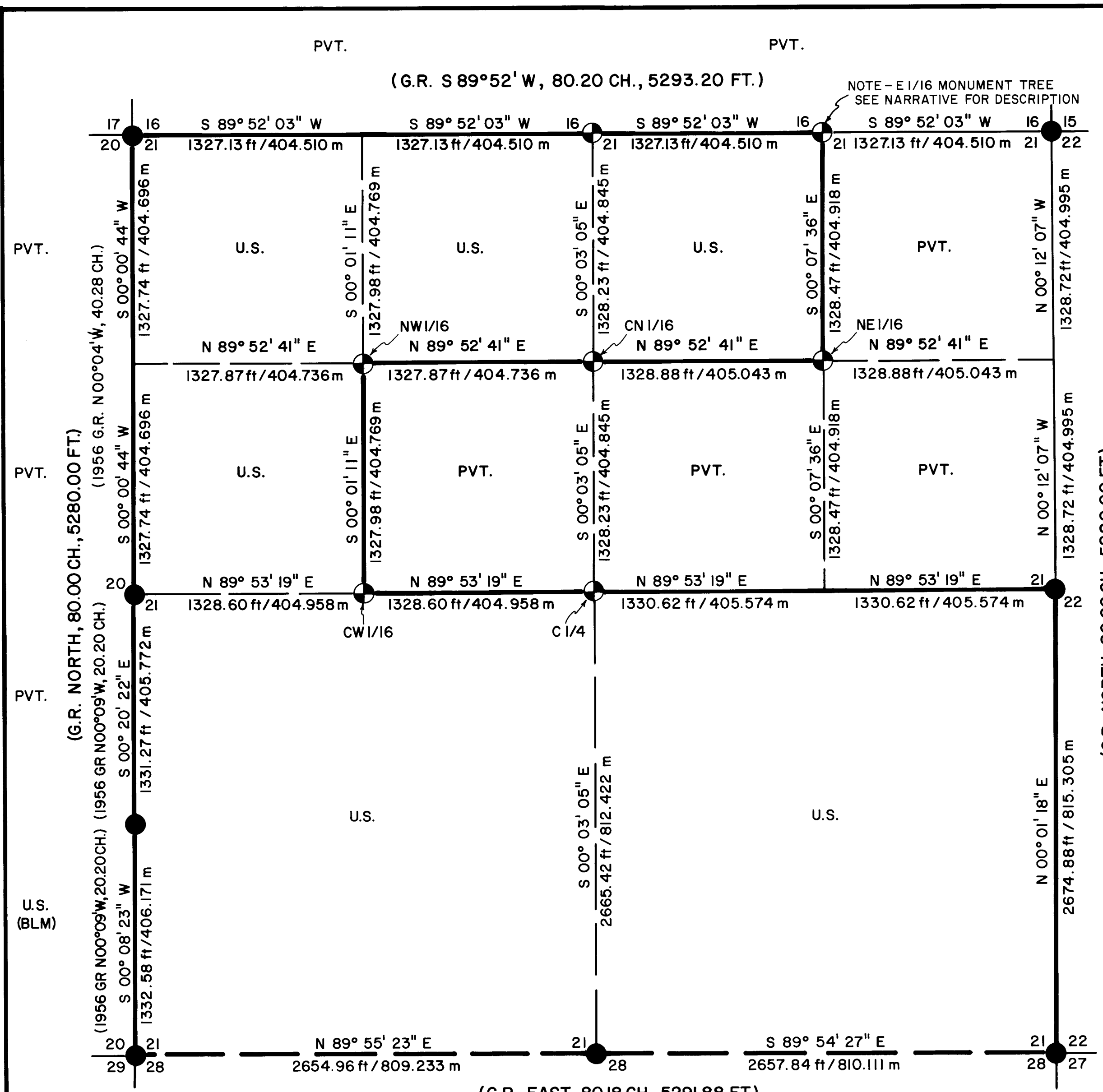


**MAP OF SURVEY**  
 FOR  
**ROGUE RIVER NATIONAL FOREST**  
 P.O. BOX 520  
 MEDFORD, OREGON  
 SEPT. 25, 1981



NOTE - E 1/16 MONUMENT TREE  
 SEE NARRATIVE FOR DESCRIPTION

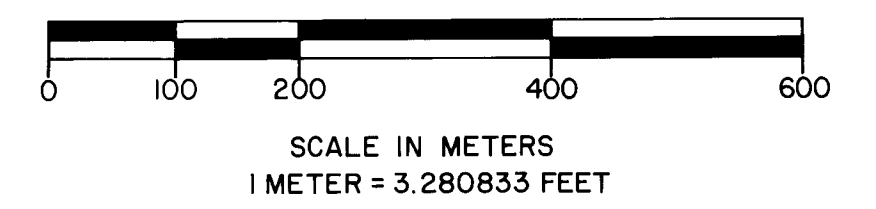
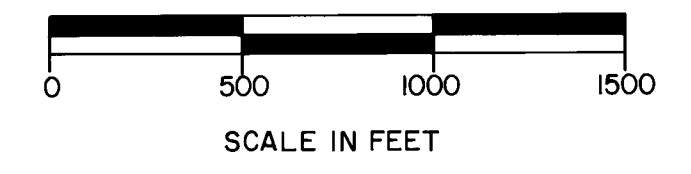
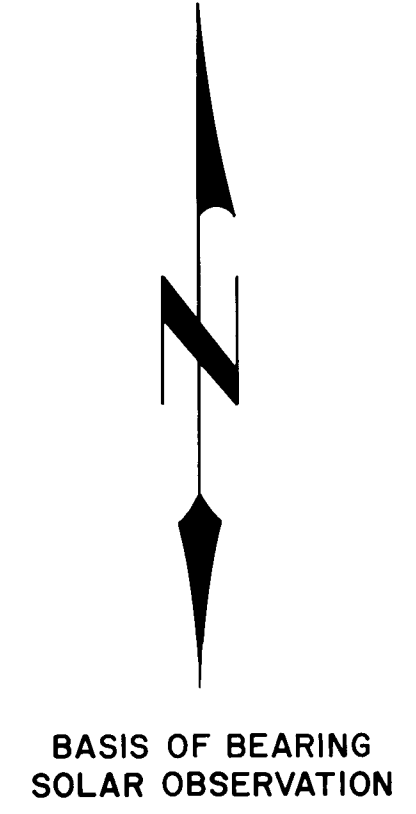
**HISTORY OF SURVEYS**

THE SUBDIVISIONAL LINES OF TOWNSHIP 36 SOUTH, RANGE 3 EAST, WERE ESTABLISHED BY RUFUS S. MOORE UNDER CONTRACT NO. 475 DATED JULY 3, 1883. ALL EXTERIOR CORNERS OF SECTION 21 HAVE BEEN REMONUMENTED BY THE GENERAL LAND OFFICE, THE BUREAU OF LAND MANAGEMENT, OR THE JACKSON COUNTY SURVEYOR, WITH THE EXCEPTION OF THE NORTH ONE-QUARTER CORNER SECTION 21. THIS CORNER WAS REESTABLISHED BY PROPORTIONATE MEASURE AS PART OF THIS SURVEY.

THE SOUTH ONE-SIXTEENTH CORNER COMMON TO SECTIONS 20 AND 21, WAS ESTABLISHED BY THE BUREAU OF LAND MANAGEMENT IN 1956 DURING A DEPENDENT RESURVEY.

THE SOUTH LINE OF SECTION 21 WAS RETRACED, MARKED, AND POSTED AS PART OF RECORD SURVEY NO. 8994, BY ALBERT H. GASTALDI, PLS 928.

NO OTHER SURVEYS ARE OF RECORD.



- LEGEND**
- FOUND STANDARD GLO, BLM, OR COUNTY SURVEYOR BRASS CAP MONUMENT
  - ⊙ SET 2 1/2" DIA. X 30" LG. GALVANIZED IRON POST WITH 2 1/2" DIA. BRASS CAP - UNLESS OTHERWISE NOTED
  - PROPERTY LINE ESTABLISHED AND POSTED THIS SURVEY
  - PROPERTY LINE PREVIOUSLY POSTED - REF. RECORD SURVEY NO. 8994
  - SECTION LINE CALCULATED FROM TRAVERSE SURVEY
  - SUBDIVISION LINE CALCULATED FROM TRAVERSE SURVEY

**CERTIFICATE OF SURVEY**

I, HAROLD L. CENTER, REGISTRATION NO. 1071, REGISTERED PROFESSIONAL LAND SURVEYOR, STATE OF OREGON, HEREBY CERTIFY THAT THIS MAP CORRECTLY REPRESENTS A SURVEY MADE BY ME OR UNDER MY DIRECTION, IN CONFORMANCE WITH THE LAWS OF THE STATE OF OREGON, AT THE REQUEST OF THE U.S. FOREST SERVICE.



U.S. DEPT. OF AGRICULTURE  
**FOREST SERVICE**  
 REGION 6 ROGUE RIVER NATIONAL FOREST

**DEPENDENT RESURVEY AND SECTION SUBDIVISION**  
**SEC. 21, T. 36 S., R. 3 E., W.M.**  
 JACKSON COUNTY, OREGON

REVIEWED BY *[Signature]* DATE 11/2/81  
 REVIEWED BY *[Signature]* DATE 11/3/81

(Narr attached) 21 36 3E

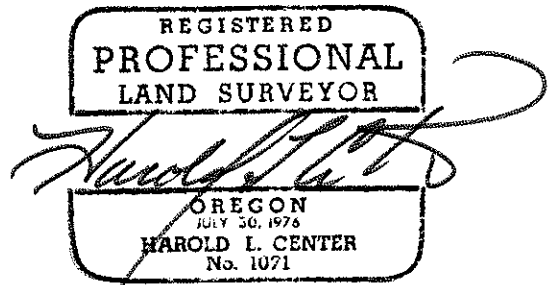
From which the following references:

A 27-inch diameter fir bears N.  $65^{\circ} 03'$  E., 56.50 feet distance.  
Scribed "C  $\frac{1}{4}$  S21 LS 1071 BT."

A 9-inch diameter pine bears S.  $43^{\circ} 07'$  E., 55.50 feet distance.  
Scribed "C  $\frac{1}{4}$  S21 LS 1071 BT."

September 25, 1981

HAROLD L. CENTER  
Registered Professional Land Surveyor  
Oregon Certificate No. 1071



From which the following references:

A 16-inch diameter fir bears S. 10° 37' W., 4.10 feet distance.  
 Scribed "CN 1/16 S21 LS 1071 BT."

A 32-inch diameter cedar bears N. 12° 43' W., 51.20 feet distance.  
 Scribed "CN 1/16 S21 LS 1071 BT."

Northwest one-sixteenth corner of Section 21, Township 36 South, Range 3 East.

At the corner point I set a 2½-inch diameter galvanized iron post with a 2½-inch diameter brass cap marked:

T36S R3E  
 NW 1/16 • S21  
 LS 1071  
 1981

From which the following references:

A 12-inch diameter fir bears N. 19° 43' E., 2.90 feet distance.  
 Scribed "NW 1/16 S21 LS 1071 BT."

A 20-inch diameter fir bears N. 57° 23' W., 26.40 feet distance.  
 Scribed "NW 1/16 S21 LS 1071 BT."

Center-west one-sixteenth corner of Section 21, Township 36 South, Range 3 East.

At the corner point I set a 2½-inch diameter galvanized iron post with a 2½-inch diameter brass cap marked:

T36S R3E  
 W 1/16  
 C ————— C  
 S21  
 1981  
 LS 1071

From which the following references:

A 19-inch diameter fir bears S. 47° 46' E., 20.40 feet distance.  
 Scribed "CW 1/16 S21 LS 1071 BT."

A 13-inch diameter yew bears N. 78° 10' W., 38.10 feet distance.  
 Scribed "CW 1/16 S21 LS 1071 BT."

Center one-quarter corner of Section 21, Township 36 South, Range 3 East.

At the corner point I set a 2½-inch diameter galvanized iron post with a 2½-inch diameter brass cap marked:

T36S R3E  
 C1/4 ——— S21  
 1981  
 LS 1071

CORNERS ESTABLISHED THIS SURVEY

One-quarter corner common to Sections 16 and 21, Township 36 South, Range 3 East.

At the corner point I set a 2 $\frac{1}{2}$ -inch diameter galvanized iron post with a 2 $\frac{1}{2}$ -inch diameter brass cap marked:

T36S R3E  
 $\frac{1}{4}$   $\frac{S16}{S21}$   
 1981  
 LS 1071

From which the following references:

A 13-inch diameter fir bears N. 16° 19' W., 29.70 feet distance.  
 Scribed "1/4 S16 LS 1071 BT."

A 9-inch diameter pine bears S. 05° 56' E., 9.80 feet distance.  
 Scribed "1/4 S21 LS 1071 BT."

East one-sixteenth corner common to Sections 16 and 21, Township 36 South, Range 3 East.

At the corner point I marked a 31-inch diameter fir as a corner tree, scribed "E 1/16 S16" on north face and "S 21" on south face.

From which the following references:

A 20-inch diameter fir bears S 30° 12' W., 41.60 feet distance.  
 Scribed "E 1/16 S21 LS 1071 BT."

A 23-inch diameter fir bears N. 07° 54' W., 23.10 feet distance.  
 Scribed "E 1/16 S16 LS 1071 BT."

Northeast one-sixteenth corner of Section 21, Township 36 South, Range 3 East.

At the corner point I set a 2 $\frac{1}{2}$ -inch diameter galvanized iron post with a 2 $\frac{1}{2}$ -inch diameter brass cap marked:

T36S R3E  
 NE 1/16 • S21  
 LS 1071  
 1981

From which the following references:

A 22-inch diameter fir bears N. 19° 50' E., 4.35 feet distance.  
 Scribed "NE 1/16 S21 LS 1071 BT."

A 15-inch diameter pine bears S. 70° 25' W., 19.20 feet distance.  
 Scribed "NE 1/16 S21 LS 1071 BT."

Center-north one-sixteenth corner of Section 21, Township 36 South, Range 3 East.

At the corner point I set a 2 $\frac{1}{2}$ -inch diameter galvanized iron post with a 2 $\frac{1}{2}$ -inch diameter brass cap marked:

T36S R3E  
 C  
 N 1/16 | S21  
 C  
 1981  
 LS 1071

A 19-inch diameter fir bears S. 24° 41' W., 16.63 feet distance with a healed blaze.

A 14-inch diameter fir bears N 45° 27' W., 37.20 feet distance with a healed blaze.

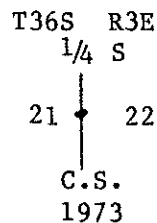
A 15-inch diameter fir bears N. 44° 02' E., 31.91 feet distance with a healed blaze.

New reference:

A 16-inch diameter fir bears S. 42° 59' E., 27.40 feet distance.  
 Scribed "T36S R3E S27 LS 1071 BT."

One-quarter corner common to Sections 21 and 22, Township 36 South, Range 3 East.

At the corner point I found a standard Jackson County Surveyor's brass cap monument marked:



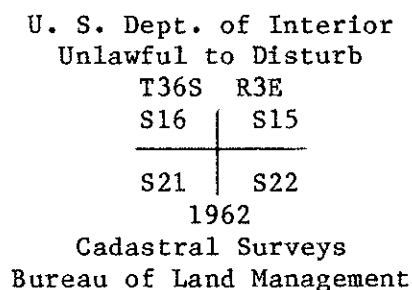
From which the following references:

A 7-inch diameter yew bears N. 79° 16' W., 20.50 feet distance with scribe marks "CS BT" visible on a partially healed double blaze.

A 13-inch diameter fir bears N. 01° 27' E., 27.40 feet distance with a double healed blaze.

Section corner common to Sections 15, 16, 21 and 22, Township 36 South, Range 3 East.

At the corner point I found a standard Bureau of Land Management brass cap monument marked:



From which the following references:

A 15-inch diameter fir bears S. 35° 53' W., 61.00 feet distance with a healed blaze.

A 9-inch diameter fir bears N. 43° 05' W., 7.80 feet distance with a healed blaze.

A 10-inch diameter fir bears N. 39° 26' E., 26.00 feet distance with a healed blaze.

A 27-inch diameter fir bears S. 39° 16' E., 42.40 feet distance with a healed blaze.

A fir stump, diameter indeterminate, bears N. 69° 13' E., 16.50 feet distance, with portions of scribe marks visible.

From which the following references:

A 10-inch diameter fir snag, 3.50 feet tall, bears N. 55° 47' E., 7.90 feet distance, with scribe marks "T36S R3E S 21 B" visible on open blaze.

A 23-inch diameter fir bears S. 35° 33' E., 24.10 feet distance, with a single healed blaze.

A 23-inch diameter fir bears S. 38° 01' W., 29.00 feet distance with a single healed blaze.

A 15-inch diameter fir bears N. 65° 24' W., 16.70 feet distance with a single healed blaze.

New reference:

A 15-inch diameter fir bears N. 70° 11' E., 11.20 feet distance. Scribed "T36S R3E S21 LS 1071 BT."

One-quarter corner common to Sections 21 and 28, Township 36 South, Range 3 East.

At the corner point I found a standard Jackson County Surveyor's brass cap monument marked:

T36S R3E  
1/4 S  
21  
—•—  
28  
C.S.  
1977

From which the following references:

An 11-inch diameter fir bears N. 75° 08' E., 29.50 feet distance with a healed blaze.

A 22-inch diameter fir bears S. 03° 59' E., 34.10 feet distance with scribe marks "BT" visible on a partially healed blaze.

A 16-inch diameter fir stump, badly burned and decayed, bears N. 68° 13' W., 15.20 feet distance with scribed marks "1/4 BT" visible on open face.

Section corner common to Sections 21, 22, 27 and 28, Township 36 South, Range 3 East.

At the corner point I found a standard Bureau of Land Management brass cap monument marked:

U. S. Dept. of Interior  
Unlawful to Disturb  
T36S R3E  
S21 | S22  
—+—  
S28 | S27  
1962  
Cadastral Surveys  
Bureau of Land Management

From which the following references:

A 9-inch diameter fir snag bears S. 60° 18' E., 17.80 feet distance with scribe marks "T36S R3E S27 BT" visible on a partially healed blaze.

From which the following references:

A 26-inch diameter fir bears N. 32° 15' W., 35.70 feet distance with a partially healed blaze.

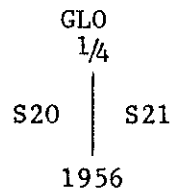
A 29-inch diameter fir bears N. 30° 31' E., 18.80 feet distance with a healed blaze.

A 16-inch diameter fir bears S. 50° 04' E., 18.60 feet distance with a healed blaze.

A 24-inch diameter fir bears S. 50° 23' W., 14.00 feet distance with a healed blaze.

One-quarter corner common to Sections 20 and 21, Township 36 South, Range 3 East.

At the corner point I found a General Land Office brass cap monument marked:



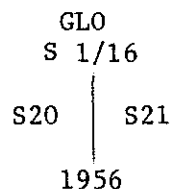
From which the following references:

A 23-inch diameter fir bears S. 48° 31' E., 30.20 feet distance with a single healed blaze.

A 34-inch diameter fir bears S. 82° 38' W., 6.10 feet distance with a double healed blaze.

South one-sixteenth corner common to Sections 20 and 21, Township 36 South, Range 3 East.

At the corner point I found a General Land Office brass cap monument marked:



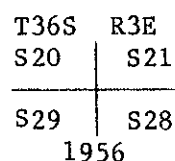
From which the following references:

An 11-inch diameter fir bears N. 29° 22' E., 32.50 feet distance with a single healed blaze.

A 15-inch diameter chinquapin bears S. 87° 06' W., 19.10 feet distance with a partially healed blaze. Scribe marks "S 1/16 S20 BT" visible.

Section corner common to Sections 20, 21, 28 and 29, Township 36 South, Range 3 East.

At the corner point I found a General Land Office brass cap monument marked:



SURVEY NARRATIVE TO COMPLY WITH  
PARAGRAPH 209.250 OREGON REVISED STATUTES

SURVEY FOR: Rogue River National Forest  
P. O. Box 520  
Medford, Oregon 97501

LOCATION: Section 21, Township 36 South, Range 3 East,  
Willamette Meridian, Jackson County, Oregon.

BASIS OF BEARING: Solar Observation

PURPOSE: To establish monuments and mark and post property  
lines separating National Forest and private lands.

PROCEDURE: Prior to commencement of this survey, an investiga-  
tion of all controlling section corners and quarter  
section corners was made. All corners have been  
recovered and remonumented by the General Land  
Office, the Bureau of Land Management, or the  
Jackson County Surveyor, with the exception of the  
North one-quarter of Section 21. The South one-  
sixteenth corner common to Sections 20 and 21 was  
established by the BLM during a dependent resurvey  
in 1956.

With the required controlling corners verified, I  
established a series of traverse lines tying all  
corners to part of a closed traverse. From this  
information, a search area was determined for the  
missing North one-quarter corner of Section 21, and  
a diligent search for evidence proved unsuccessful.  
I, therefore, reestablished this corner by propor-  
tionate measure.

From this data, I then proceeded to subdivide the  
section. A traverse was run along the interior  
lines, closing to previously established lines.  
From this information, interior corner positions  
were monumented and lines were posted as shown on  
attached map of survey.

True lines were posted with aluminum fence posts  
with National Forest boundary signs attached.  
Trees along the true line were blazed and painted  
with red tree marking paint.

This survey was performed utilizing a Wild T-2  
Theodolite and a Hewlett-Packard 3808 Electronic  
Distance Meter.

Corners Accepted For Control

Section corner common to Sections 16, 17, 20 and 21, Township 36 South,  
Range 3 East.

At the corner point I found a General Land Office brass cap monument  
marked:

U. S. General Land Office Survey  
T36S R3E  
S17 | S16  
-----  
S20 | S21  
1956

