

81-19124

AGAPE SUBDIVISION UNIT No. 2 TO THE CITY OF ASHLAND

Located in NW 1/4 of Sec. 14, Twp. 39S., R. 1 E.W.M., Jackson County, Oregon

POST MONUMENTATION MAP

- ⊙ Monument per original subdivision plat
- Monument per original subdivision plat
- Monument per original subdivision plat
- ◊ Monument per original subdivision plat
- Monument per original subdivision plat
- ⦿ Set 1 1/2 x 24 inch galvanized iron pipe with 3 inch bronze disk in monument case
- ⦿ Set 2 x 22 inch iron pipe with 3 inch bronze disk in monument case
- ◇ Set concrete nail and brass tag marked "LS 759"
- ◆ Set 5/8 x 24 inch iron pin tagged RLS 759
- ◇ Set lead and brass nail with brass tag marked "LS 759"

Examined and approved this 29th day of September 1981

James Holter
City Surveyor

Filed for record this 12 day of October 1981 at 2:12 o'clock P M. and recorded in the Official Records of Jackson County, Oregon.

Wallace Terry
County Clerk

Betty King
Deputy

81-19124

NOTE:
See plat of Agape Subdivision Unit No. 2 filed for record the 23rd day of October, 1980 at 10:10 o'clock A.M. and recorded in Volume 14 of plats at page 42 of records of Jackson County, Oregon for lot bearings and distances.

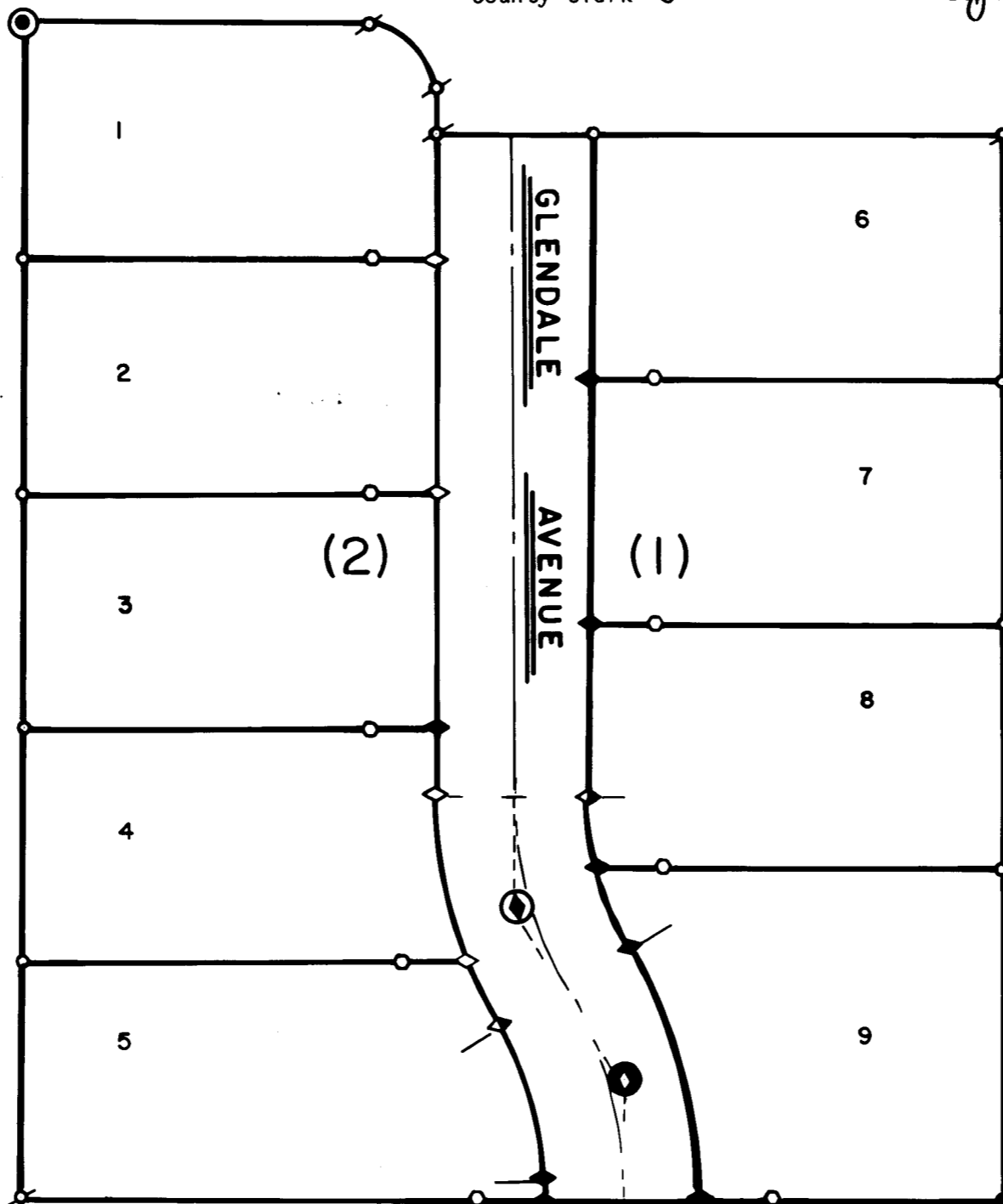
I, Everett L. Swain, duly Registered Surveyor of the State of Oregon, do hereby certify that this map represents a survey made by me or under my direction and the monuments conform to O.R.S. 92.060

SWAIN SURVEYING, INC.
27 1/2 N. Main Street
Ashland, Oregon 97520

REGISTERED
PROFESSIONAL
LAND SURVEYOR

Everett L. Swain
OREGON
JULY 8, 1966
EVERETT L. SWAIN
759

JACKSON COUNTY
RECEIVED
OCT 12 1981
SURVEYOR



Scale: 1"=50'
September 24, 1981