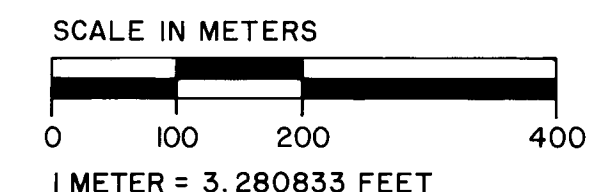
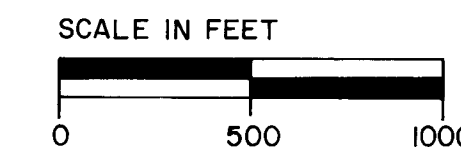
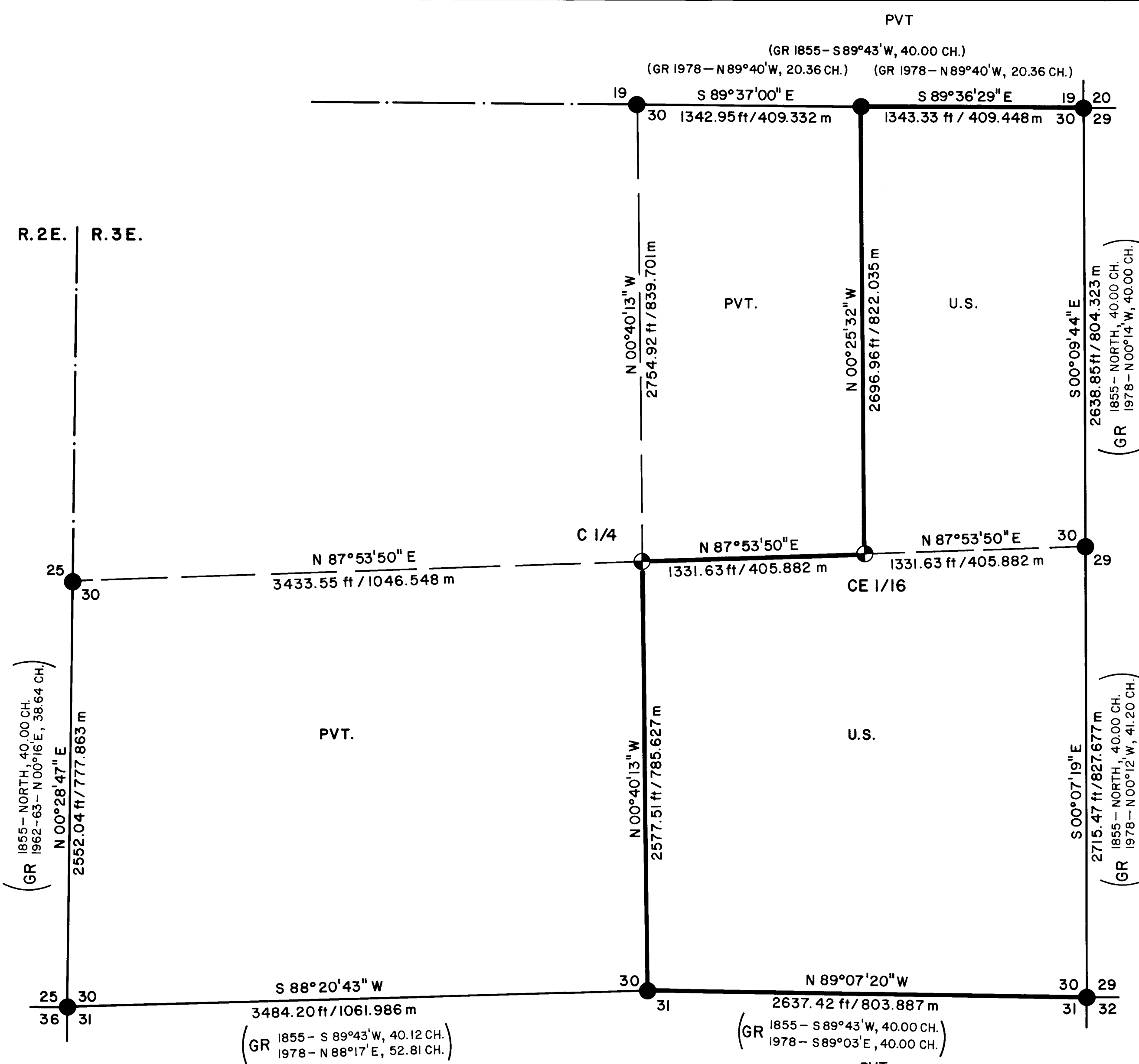


MAP OF SURVEY FOR ROGUE RIVER NATIONAL FOREST P.O. BOX 520 MEDFORD, OREGON AUGUST 31, 1981



HISTORY OF SURVEYS

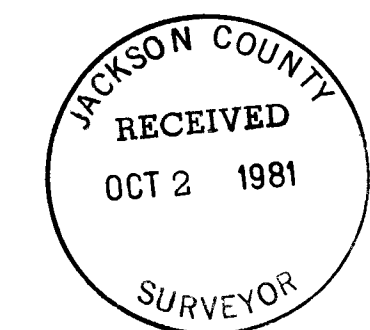
THE ORIGINAL SURVEY OF SECTION 30 WAS PERFORMED BY DEPUTY SURVEYOR NATHANIAL FORD UNDER CONTRACT NO. 58, DATED APRIL 18, 1855.

THE WEST BOUNDARY OF SECTION 30 WAS RESURVEYED BY THE BUREAU OF LAND MANAGEMENT CADASTRAL SURVEYS IN 1962-63.

THE BUREAU OF LAND MANAGEMENT CADASTRAL SURVEYS ALSO PERFORMED A DEPENDENT RESURVEY OF THE EAST, NORTH, AND SOUTH LINES IN 1978-79. SEVERAL ORIGINAL CORNER POINTS WERE REMONUMENTED AND THE EAST ONE-SIXTEENTH CORNER COMMON TO SECTIONS 19 AND 30 WAS ESTABLISHED.

PERSONNEL FROM THE MEDFORD DISTRICT OFFICE OF THE BUREAU OF LAND MANAGEMENT PERFORMED AN ADMINISTRATIVE SURVEY OF THE SOUTH LINE OF SECTION 30 IN NOVEMBER OF 1969. THIS LINE WAS POSTED AND BLAZED. THE ESTABLISHMENT OF ADMINISTRATIVE CORNER POINTS ALONG THIS LINE WAS NOT IN EVIDENCE.

NO OTHER SURVEYS OF RECORD WERE RECORDED.



LEGEND

- FOUND STANDARD BLM OR COUNTY SURVEYOR BRASS CAP MONUMENT
- SET 2 1/2" DIA. GALVANIZED IRON POST WITH 2 1/2" DIA. BRASS CAP
- PROPERTY LINE ESTABLISHED AND POSTED THIS SURVEY
- SUBDIVISION LINE CALCULATED FROM TRAVERSE SURVEY
- SECTION LINE CALCULATED FROM TRAVERSE SURVEY
- PROJECTED SECTION LINE

CERTIFICATE OF SURVEY

I, HAROLD L. CENTER, REGISTRATION NO. 1071, REGISTERED PROFESSIONAL LAND SURVEYOR, STATE OF OREGON, HEREBY CERTIFY THIS MAP CORRECTLY REPRESENTS A SURVEY MADE BY ME OR UNDER MY DIRECTION, IN CONFORMANCE WITH THE LAWS OF THE STATE OF OREGON, AT THE REQUEST OF THE U.S. FOREST SERVICE.

U.S. DEPT. OF AGRICULTURE FOREST SERVICE	
REGION 6	ROGUE RIVER NAT'L FOREST
DEPENDENT RESURVEY AND SECTION SUBDIVISION	
SEC. 30, T. 35 S., R. 3 E., W.M.	
JACKSON COUNTY, OREGON	
REVIEWED BY <i>R. J. Hathaway</i>	DATE <i>9/24/81</i>
REVIEWED BY <i>R. J. Hathaway</i>	DATE <i>9/25/81</i>

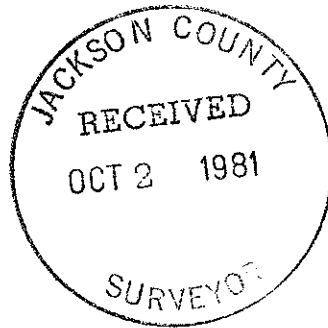
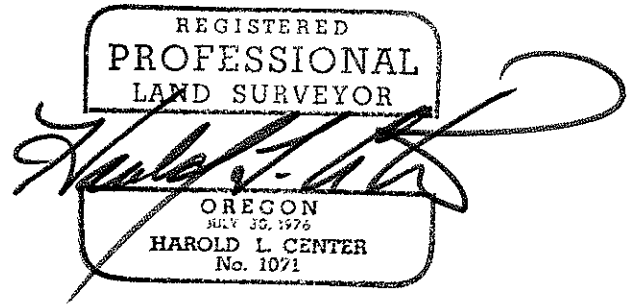
From which the following references:

A 14-inch diameter pine bears N 86° 21' E. 36.50 feet distance; scribed
CE 1/16 S30 LS 1071 BT.

A 13-inch diameter pine bears S 10° 51' W. 33.73 feet distance; scribed
CE 1/16 S30 LS 1071 BT.

August 31, 1981

HAROLD L. CENTER
Registered Professional Land Surveyor
Oregon Certificate No. 1071



U. S. Dept. of Interior
 Unlawful to Disturb
 T35S
 R2E R3E
 1/4
 S25 | S30
 1963
 Cadastral Surveys
 Bureau of Land Management

From which the following references:

A 9-inch diameter fir bears N 67° 08' W. 30.60 feet distance. Scribe visible. This tree not included in official record.

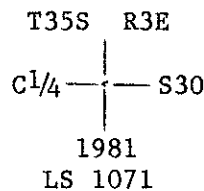
A 12-inch diameter stump bears N 36° 57' W. 14.90 feet distance. No scribe visible.

A 13-inch diameter fir bears S 85° 21' W. 56.20 feet distance with a healed blaze.

CORNERS ESTABLISHED THIS SURVEY

Center one-quarter corner Section 30, Township 35 South, Range 3 East.

At the corner point I set a 2 1/2-inch diameter galvanized iron post with a 2 1/2-inch diameter brass cap marked:



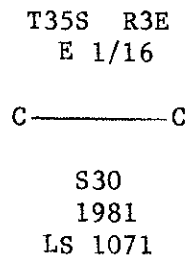
From which the following references:

A 13-inch diameter fir bears N 51° 29' E. 35.44 feet distance; scribed C 1/4 S30 LS 1071 BT.

A 12-inch diameter fir bears S 24° 17' E. 21.35 feet distance; scribed C 1/4 S30 LS 1071 BT.

Center-east one-sixteenth corner Section 30, Township 35 South, Range 3 East.

At the corner point I set a 2 1/2-inch diameter galvanized iron post with a 2 1/2-inch diameter brass cap marked:



One-quarter corner common to Sections 30 and 31, Township 35 South, Range 3 East.

At the corner point I found a standard Bureau of Land Management brass cap monument marked:

U. S. Dept. of Interior
Unlawful to Disturb
T35S R3E
 $\frac{1}{4} \frac{S30}{S31}$
1978
Cadastral Surveys
Bureau of Land Management

From which the following references:

A 6-inch diameter fir bears S 50° 19' W. 47.23 feet distance with a healed blazed.

A 12-inch diameter yew bears N 39° 44' E. 7.60 feet distance. Scribe visible.

Section corner common to Sections 30 and 31, Township 35 South, Range 3 East, and Sections 25 and 36, Township 35 South, Range 2 East.

At the corner point I found a standard Bureau of Land Management brass cap monument marked:

U. S. Dept. of Interior
Unlawful to Disturb
T35S
R2E R3E
S25 S30
S36 S31
1963
Cadastral Surveys
Bureau of Land Management

From which the following references:

A 15-inch diameter fir bears S 41° 00' W. 48.00 feet distance with a healed blaze.

A 13-inch diameter fir bears N 11° 19' W. 18.50 feet distance with a healed blaze.

A 25-inch diameter cedar bears N 32° 01' E. 89.70 feet distance with a healed blaze.

A 31-inch diameter cedar bears S 50° 11' E. 80.50 feet distance with a healed blaze.

One-quarter corner common to Section 30, Township 35 South, Range 3 East, and Section 25, Township 35 South, Range 2 East.

At the corner point I found a standard Bureau of Land Management brass cap monument marked:

A 23-inch diameter pine bears S 56° 23' W. 189.25 feet distance with a healed blaze.

A 7-inch diameter oak bears N 35° 44' W. 107.43 feet distance with a healed blaze.

The roothole of a dead and down tree, species and size indeterminate, bears N 30° 41' W. 63.00 feet distance.

One-quarter corner common to Sections 29 and 30, Township 35 South, Range 3 East.

At the corner point I found a standard Bureau of Land Management brass cap monument marked:

U. S. Dept. of Interior
 Unlawful to Disturb
 T35S R3E
 1/4
 S30 | S29
 1978
 Cadastral Surveys
 Bureau of Land Management

From which the following references:

A 8-inch diameter pine bears N 60° 18' W. 6.30 feet distance with a healed blaze.

A 8-inch diameter pine bears N 79° 43' E. 14.67 feet distance with a healed blaze.

Section corner common to Sections 29, 30, 31 and 32, Township 35 South, Range 3 East.

At the corner point I found a standard Bureau of Land Management brass cap monument marked:

U. S. Dept. of Interior
 Unlawful to Disturb
 T35S R3E
 S30 | S29
 S31 | S32
 1977
 Cadastral Surveys
 Bureau of Land Management

From which the following references:

A 12-inch diameter fir bears S 30° 17' E. 28.20 feet distance with a healed blaze.

A snag, size and species indeterminate, bears S 66° 39' W. 23.40 feet distance.

A 19-inch diameter fir bears S 70° 16' W. 16.60 feet distance with a healed blaze.

A 14-inch diameter fir bears N 29° 57' W. 5.80 feet distance with healed blaze.

A 10-inch diameter fir bears N 83° 28' E. 8.40 feet distance with a healed blaze.

From which the following references:

A 11-inch diameter fir bears S 69° 27' E. 13.40 feet distance. Scribe visible.

A 8-inch diameter cedar bears N 16° 17' E. 40.10 feet distance. Scribe visible.

East one-sixteenth corner common to Sections 19 and 30, Township 35 South, Range 3 East.

At the corner point I found a standard Bureau of Land Management brass cap monument marked:

U. S. Dept. of Interior
Unlawful to Disturb
T35S R3E
E 1/16 $\frac{S19}{S30}$
1978
Cadastral Surveys
Bureau of Land Management

From which the following references:

A 13-inch diameter fir bears S 15° 56' E. 40.70 feet distance with a healed blaze.

A 20-inch diameter pine bears N 59° 51' W. 37.40 feet distance with a healed blaze.

Section corner common to Sections 19, 20, 29 and 30, Township 35 South, Range 3 East.

At the corner point I found a standard Bureau of Land Management brass cap monument marked:

U. S. Dept. of Interior
Unlawful to Disturb
T35S R3E

S19	S20
S30	S29

1966
Cadastral Surveys
Bureau of Land Management

From which the following references:

A 15-inch diameter pine bears N 60° 54' E. 111.54 feet distance with a healed blaze.

A 20-inch diameter pine bears S 75° 42' E. 78.83 feet distance with a healed blaze.

A 12-inch diameter pine bears S 33° 21' W. 65.60 feet distance with a healed blaze.

A 28-inch diameter oak bears N 39° 58' E. 489.44 feet distance with a healed blaze.

The northwest corner of the foundation of a barn (barn burned down) bears S 48° 14' E. 157.34 feet distance.

SURVEY NARRATIVE TO COMPLY WITH
PARAGRAPH 209.250 OREGON REVISED STATUTES

SURVEY FOR: Rogue River National Forest
P. O. Box 520
Medford, Oregon 97501

LOCATION: Section 30, Township 35 South, Range 3 East,
Willamette Meridian, Jackson County, Oregon.

BASIS OF BEARING: Solar observation.

PURPOSE: To establish monuments and mark and post property
lines separating National Forest and private lands.

PROCEDURE: I began this survey with an investigation of
controlling corners required for subdivision of
Section 30. The northeast and southeast section
corners, and east and north one-quarter corners had
been remonumented from original corner evidence by
the Bureau of Land Management, Cadastral Surveys.
The south one-quarter corner was restored by the
Bureau of Land Management, Cadastral Surveys in
1978. Evidence of the original south one-quarter
corner had been searched for on numerous occasions.
This corner was restored by utilizing a projection
of the bearing between the one-quarter corner of
Sections 29 and 32, westerly to the section corner
common to Sections 29, 30, 31 and 32, and at 40
chains distance. During the 1978 survey the east
one-sixteenth corner common to Sections 19 and 30
was also established. The work by the Bureau of
Land Management in 1978 remains unofficial as of
this date.

The Bureau of Land Management restored by propor-
tional measurement the southwest section corner and
the west one-quarter corner of Section 30. This
work was officially approved on January 31, 1977.

With the above corner control identified, I per-
formed a series of closed traverses tying the above
corner control. From this data, corner positions
were monumented as shown and property lines
separating National Forest and private lands were
posted utilizing aluminum posts with National
Forest boundary signs attached.

Work was performed utilizing a Wild T-2 Theodolite
and a Hewlett-Packard 3808A Electronic Distance
Meter.

Corners Accepted For Control

One-quarter corner common to Sections 19 and 30, Township 35 South, Range 3
East.

At the corner point I found a standard Bureau of Land Management brass cap
monument marked:

U. S. Dept. of Interior
Unlawful to Disturb
T35S R3E
 $\frac{1}{4} \frac{S19}{S30}$
1978
Cadastral Surveys
Bureau of Land Management