

81-18655

81-18655

81-18655

# STONECREEK No. 2

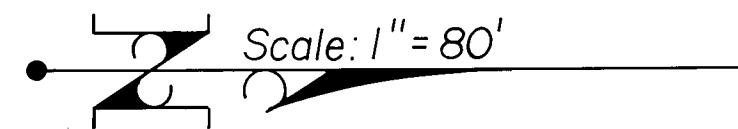
A replat of parts of Lots M and U of SNOWY BUTTE ORCHARDS in Sections 10 and 11, T.37S., R.2W., W.M., Jackson County, Oregon in the City of Central Point.

## POST MONUMENTATION PLAT

I, Verlyn Thomas, a duly Registered Land Surveyor of the State of Oregon, do hereby certify that this map represents a survey made by me or under my direction and the monuments conform to O.R.S. 92.060.

Examined and approved this 5<sup>th</sup> day of Oct, 1981.

*Edward G. Mc Larty*  
County Surveyor

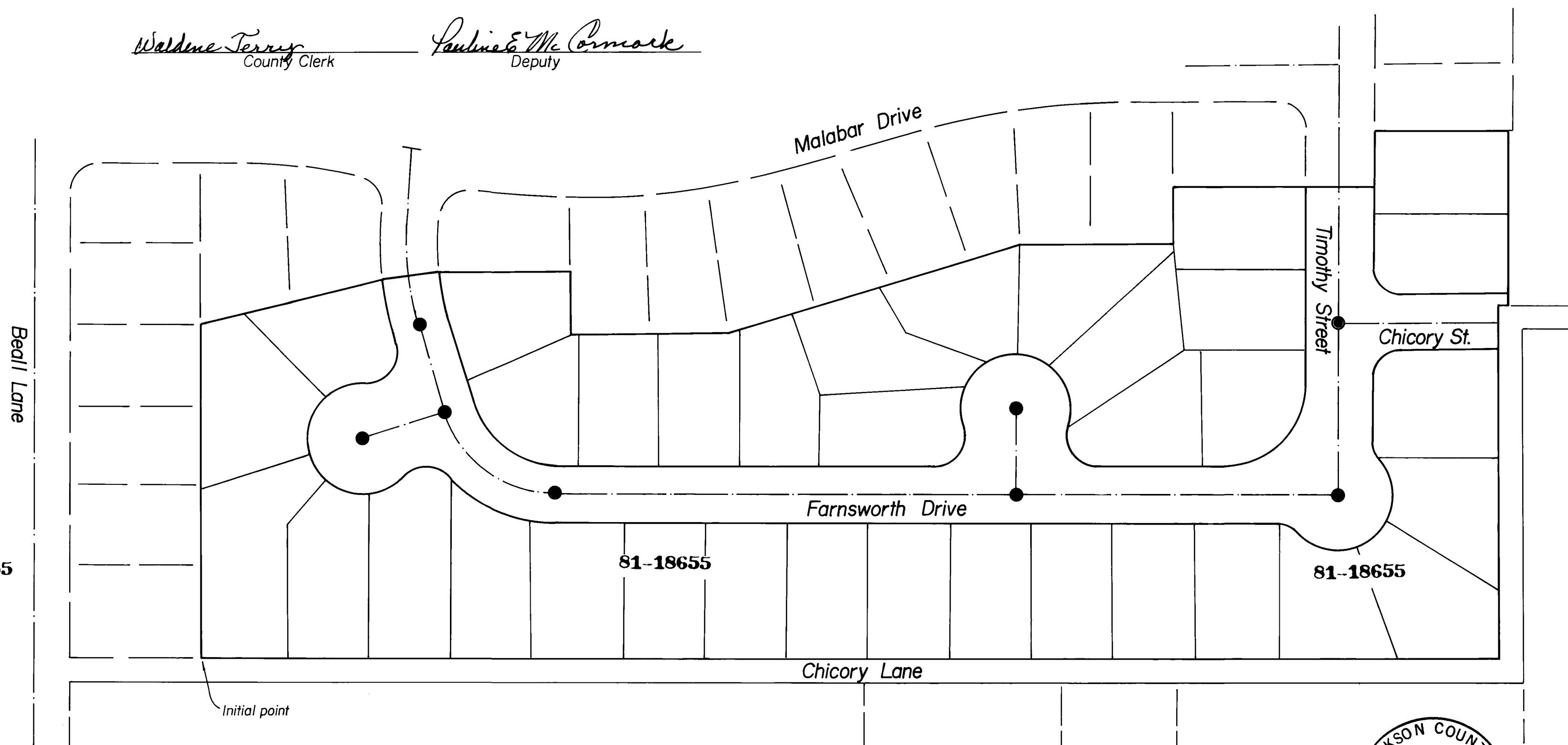


● Concrete street monument with metal disc

Filed for record this 5<sup>th</sup> day of October, 1981, at 9:56 O'Clock A. m. and recorded in the Official Records of Jackson County, Oregon.

*Waldene Terry*  
County Clerk

*Pauline E. McCormack*  
Deputy



81-18655

81-18655

81-18655

