

RECORD OF SURVEY
For

ROGUE RIVER NATIONAL FOREST

P.O. BOX 520
MEDFORD, OREGON

Located in
SECTION 36, T. 40 S., R. 5 W., W.M.
JOSEPHINE COUNTY
And
SECTION 31, T. 40 S., R. 4 W., W.M.
JACKSON COUNTY, OREGON

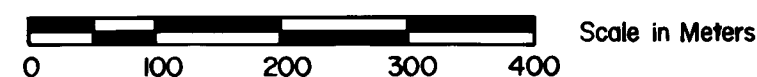
SEPTEMBER 4, 1981

LEGEND

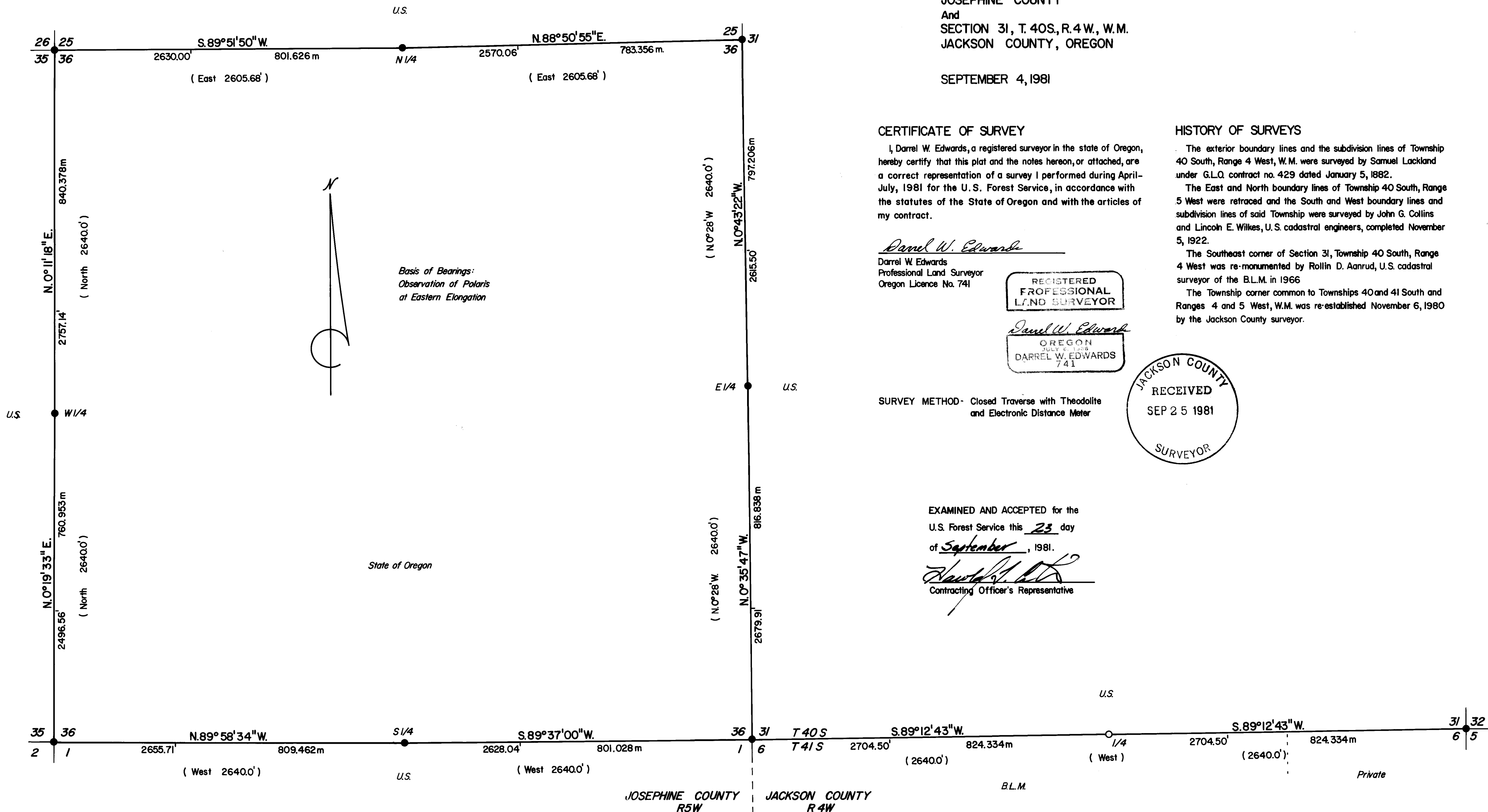
- Found Standard B.L.M., G.L.O., or County Surveyor Monument (See Narrative)
- Set 2 1/2" x 30" Galvanized Iron Pipe with 2 1/2" Brass Cap
- Property Line Established and Posted in this Survey
- () Government Record Measurement

SCALE

1" = 500'



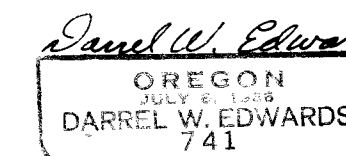
1 Meter = 3.280833 Feet



CERTIFICATE OF SURVEY

I, Darrel W. Edwards, a registered surveyor in the state of Oregon, hereby certify that this plat and the notes hereon, or attached, are a correct representation of a survey I performed during April-July, 1981 for the U.S. Forest Service, in accordance with the statutes of the State of Oregon and with the articles of my contract.

Darrel W. Edwards
Darrel W. Edwards
Professional Land Surveyor
Oregon Licence No. 741



SURVEY METHOD - Closed Traverse with Theodolite and Electronic Distance Meter

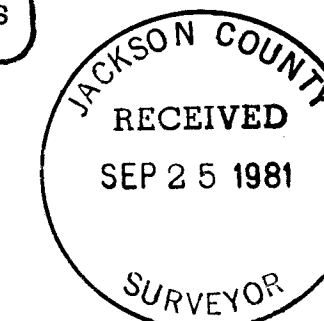
HISTORY OF SURVEYS

The exterior boundary lines and the subdivision lines of Township 40 South, Range 4 West, W.M. were surveyed by Samuel Lackland under G.L.O. contract no. 429 dated January 5, 1882.

The East and North boundary lines of Township 40 South, Range 5 West were retraced and the South and West boundary lines and subdivision lines of said Township were surveyed by John G. Collins and Lincoln E. Wilkes, U.S. cadastral engineers, completed November 5, 1922.

The Southeast corner of Section 31, Township 40 South, Range 4 West was re-monumented by Rollin D. Aanrud, U.S. cadastral surveyor of the B.L.M. in 1966

The Township corner common to Townships 40 and 41 South and Ranges 4 and 5 West, W.M. was re-established November 6, 1980 by the Jackson County surveyor.



EXAMINED AND ACCEPTED for the
U.S. Forest Service this 23 day
of September, 1981.

David S. [Signature]
Contracting Officer's Representative

From which I found the following bearing trees:

- A 12" Fir bears N. 48° 46' E., 48.2 feet with healed blaze (1966 FT)
- A 12" Fir bears S. 45° 13' E., 35.6 feet with healed blaze (1966 FT)
- A 12" Fir bears S. 43° 17' W., 28.4 feet with healed blaze (1966 FT)
- A 10" Fir bears N. 41° 18' W., 36.0 feet with healed blaze (1966 FT)

CORNER ESTABLISHED ON THIS SURVEY

The quarter corner common to Section 31, Township 40 South, Range 4 West of the Willamette Meridian and Section 6, Township 41 South, Range 4 West of the Willamette Meridian. At the corner location I set a 2 1/2 inch diameter galvanized iron pipe with a 2 1/2 inch diameter brass cap marked:

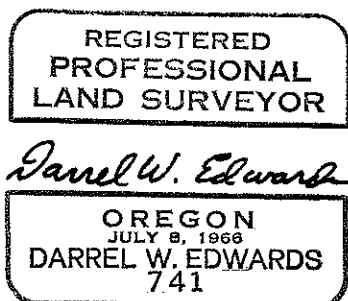
T 40 S R 4 W
 S 31
 1/4 —————
 S 6
 T 41 S
 1981
 IS 741

From which I established the following bearing trees:

- A 12" Douglas Fir bears N. 11° 10' W., 11.8 feet scribed "1/4 S 31-FT" on an upper and lower blaze and tagged with a brass washer marked "IS 741."
- A 10" Douglas Fir bears S. 70° 15' E., 11.7 feet scribed "1/4 S 6-FT" on an upper and lower blaze and tagged with a brass washer marked "IS 741."

September 4, 1981

Darrel W. Edwards
 Registered Professional Land Surveyor
 Oregon Certificate No. 741



From which I found the following bearing trees:

A 24" Cedar bears S. $59^{\circ} 18'$ W., 39.7 feet with healed blaze. (1922 BT)

A 19" Fir bears N. $52^{\circ} 59'$ W., 46.6 feet with healed blaze. (1922 BT)

A 16" Oak bears N. $83^{\circ} 14'$ E., 29.3 feet with healed blaze. (1922 BT)

I established the following bearing tree:

A 12" Fir bears S. $34^{\circ} 50'$ E., 16.3 feet scribed "T 40S R 5W S 36-BT" on an upper and lower blaze and tagged with a brass washer marked "LS 741."

The quarter corner common to Sections 25 and 36, Township 40 South, Range 5 West of the Willamette Meridian. At the corner location I found a standard G.I.C. Brass Cap marked:

U.S. General Land Office Survey
penalty \$250. for removal

S 25
1/4 —————
S 36

1922

From which I found the following bearing trees:

A 22" Fir bears N. $89^{\circ} 31'$ E., 12.7 feet with healed blaze and U.S.F.S. tag.

A 19" Fir bears S. $1^{\circ} 44'$ E., 18.1 feet with healed blaze and U.S.F.S. tag.

I establish the following bearing tree:

A 14" W. Fir bears N. $10^{\circ} 20'$ E., 28.1 feet scribed "1/4 S 25 BT" on an upper and lower blaze and tagged with a brass washer marked "LS 741."

The section corner common to Sections 31 and 32, Township 40 South, Range 4 West of the Willamette Meridian and Sections 5 and 6, Township 41 South, Range 4 West of the Willamette Meridian. At the corner location I found a standard P.L.M. Brass Cap marked:

U.S. DEPT. OF INTERIOR
UNLAWFUL TO DISTURB

T 40 S R 4 W

S 31	S 32
S 6	S 5
T 41 S	
1966	

CADASTRAL SURVEY
BUREAU OF LAND MANAGEMENT

A 28" Fir bears S. $41^{\circ} 52'$ W., 27.9 feet with healed blaze and tag (1922 PT)

A 30" Fir (snag) bears N. $24^{\circ} 31'$ W., 19.2 feet scribed "T 40S R 5W S-35" (1922 PT)

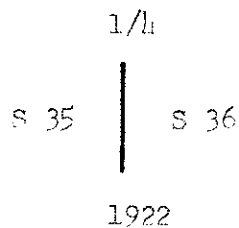
I establish the following bearing trees:

An 8" Fir bears N. $65^{\circ} 30'$ E., 40.7 feet scribed "T 40S R 5W S-36 PT" on an upper and lower blaze and tagged with a brass washer marked "IS 741."

An 11" W. Fir bears N. $29^{\circ} 25'$ W., 58.0 feet scribed "T 40S R 5W S 35-PT" on an upper and lower blaze and tagged with a brass washer marked "IS 741."

The quarter corner common to Sections 36 and 35, Township 40 South, Range 5 West of the Willamette Meridian. At the corner location I found a standard G.L.O. Brass Cap marked:

U.S. General Land Office Survey
penalty \$250 for removal



From which I found the following bearing trees:

A 40" Douglas Fir bears N. $30^{\circ} 05'$ E., 9.6 feet with healed blaze. (1922 PT)

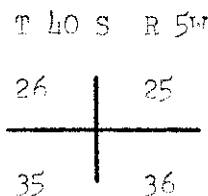
A rotted stump of a fallen Cedar bears S. $64^{\circ} 48'$ W., 28.0 feet. (1922 PT)

I established the following bearing tree:

An 11" Cedar bears N. $87^{\circ} 15'$ W., 7.7 feet scribed "1/4 S-35-PT" on an upper and lower blaze and tagged with a brass washer marked "IS 741."

The section corner common to Sections 25, 26, 35 and 36, Township 40 South, Range 5 West of the Willamette Meridian. At the corner location I found a Standard G.L.O. Brass Cap marked:

U.S. General Land Office Survey
penalty \$250 for removal



1922

From which I found the following bearing trees:

A 20" Laurel bears N. 18° 04' E., 15.4 feet with healed single blaze (1922 FT)

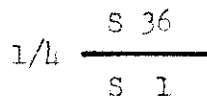
An 18" Laurel bears S. 5° 21' E., 30.9 feet with healed single blaze (1922 FT)

A 34" Douglas Fir bears S. 38° 24' W., 30.7 feet with healed single blaze (1922 FT)

A 17" Oak bears N. 53° 55' W., 47.2 feet with scribe marks in partially healed face (1922 FT)

The quarter corner common to Section 36, Township 40 South, Range 5 West of the Willamette Meridian and Section 1, Township 41 South, Range 5 West of the Willamette Meridian. At the corner location I found a standard G.L.O. Brass Cap marked:

U.S. General Land Office Survey
penalty \$250 for removal



1922

From which I found the following bearing trees:

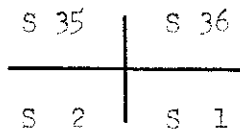
A 27" Fir bears S. 12° 24' E., 45.0 feet with healed blaze (1922 FT)

A 48" Pine bears N. 28° 43' W., 76.0 feet with healed blaze (1922 FT)

Section corner common to Sections 36 and 35, Township 40 South, Range 5 West and Sections 1 and 2, Township 41 South, Range 5 West of the Willamette Meridian. At the corner location I found a standard G.L.O. Brass Cap marked:

U.S. General Land Office Survey
penalty \$250 for removal

T 40S R 5W



T 41S
1922

From which I found the following bearing trees:

A 46" Fir bears S. 38° 42' E., 73.5 feet with healed blaze and tag (1922 FT)

A 14" Fir (dead) bears S. $55^{\circ} 52'$ W., 62.1 feet (Record R.T.)
1922

I establish the following bearing trees:

A 12" Madrone bears N. $31^{\circ} 35'$ W., 14.0 feet scribed "T 40S R 5W
S 25-FT" on an upper and lower blaze and tagged with a brass washer
marked "IS 741."

A 10" Madrone bears N. $32^{\circ} 25'$ E., 18.8 feet scribed "T 40S R 4W
S 31-FT" on an upper and lower blaze and tagged with a brass washer
marked "IS 741."

A 10" Madrone bears S. $73^{\circ} 35'$ W., 22.9 feet scribed "T 40S R 5W
S 36-FT" on an upper and lower blaze and tagged with a brass washer
marked "IS 741."

The east quarter corner for Section 36 only, Township 40 South, Range 5
West of the Willamette Meridian. At the corner location I found a standard
G.L.O. Brass Cap marked:

U.S. General Land Office
penalty \$250 for removal

1/4
|
S 36
|
1922

From which I found the following bearing tree:

A 46" Fir bears N. $26^{\circ} 48'$ W., 66.5 feet with visible scribes and tagged
with an Oregon State Forestry tag.

I establish the following bearing tree:

A 13" W. Fir bears S. $68^{\circ} 40'$ W., 14.1 feet scribed "1/4 S 36-FT" on an
upper and lower blaze and tagged with a brass washer marked "IS 741."

Township corner common to Townships 40 and 41 South and Ranges 4 and 5 West
of the Willamette Meridian. At the corner location I found a Jackson County
Surveyors Brass Cap marked:

Jackson County 1980

T 40 S

R 5W

R 4W

36 | 31
—+—
1 | 6

T 41 S

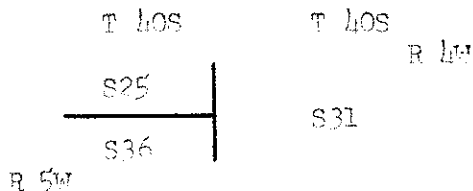
SURVEY NARRATIVE TO COMPLY WITH PARAGRAPH 209.250, OREGON REVISED STATUTES

- SURVEY FOR:** Rogue River National Forest
P. C. Fox 520
Medford, OR 97501
- CONTRACT:** Jack Dawson Cadastral Survey
Contract No. 53-0441-1-8399M
- LOCATION:** Section 36, Township 40 South, Range 5 West of the Willamette Meridian, Josephine County, and the South line of Section 31, Township 40 South, Range 4 West of the Willamette Meridian, Jackson County, Oregon.
- BASIS OF BEARINGS:** Observation of Polaris at Eastern Elongation.
- PURPOSE:** To establish, post and blaze the National Forest boundary lines. To perform necessary maintenance on the controlling corner monuments. To monument the South quarter corner of Section 31 as shown on the accompanying plat.
- PROCEDURE:** A search of the available records revealed the History of Surveys as stated on the accompanying plat. Upon locating the controlling monuments I ran a random traverse through each monument setting control points as required for posting. Using the data thus obtained, I computed the corner positions and offsets to true line from the control points. I then posted and blazed the property lines as required. The South quarter corner of Section 31 was set at a proportioned split per original government records.

CORNERS ACCEPTED FOR CONTROL

Section corner common to Sections 25, 36, Township 40 South, Range 5 West of the Willamette Meridian and Section 31, Township 40 South, Range 4 West of the Willamette Meridian. At the corner location I found a Standard G.L.O. Brass Cap marked:

U.S. General Land Office
penalty \$250 for removal



1922

From which I found the following bearing trees:

An 11" Canyon Live Oak bears N. 64° 32' W., 47.0 feet (Record B.T.)
1922

An 11" Madrone bears N. 28° 05' W., 11.9 feet with recent upper blaze.