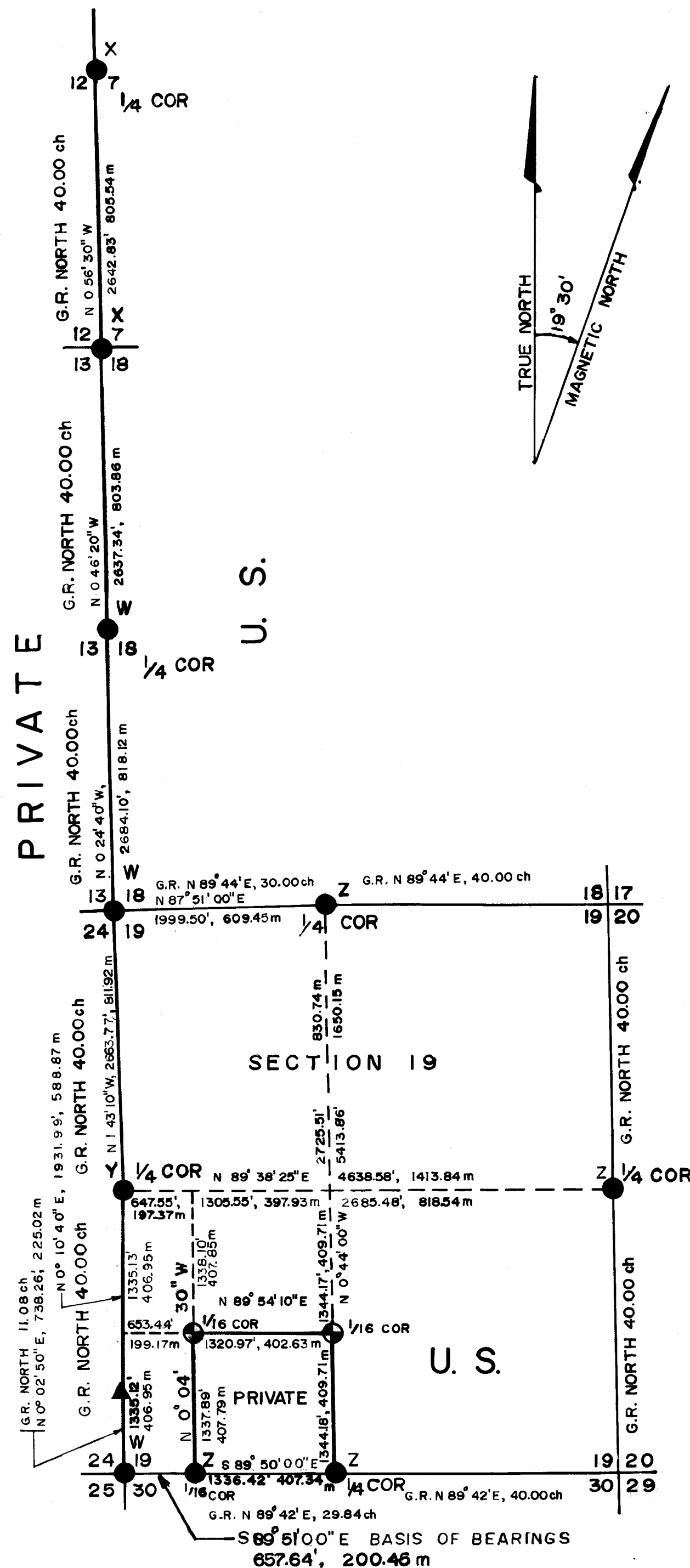


R 3 E R 4 E



# MAP OF SURVEY

LOCATED IN SECTIONS 7, 18 and 19, T.32 S., R.4 E.,  
W.M., JACKSON COUNTY, OREGON.

FOR

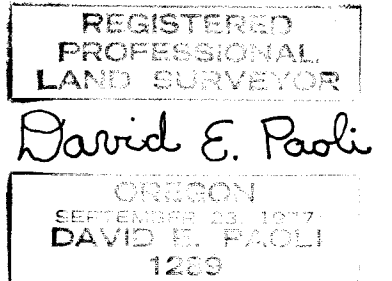
THE U.S. FOREST SERVICE  
JULY 20, 1981

## CERTIFICATE OF SURVEY

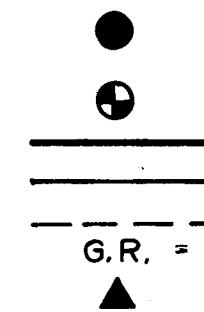
"I, DAVID E. PAOLI, A REGISTERED LAND SURVEYOR IN THE STATE OF OREGON, HEREBY CERTIFY THAT THIS PLAT AND THE NOTES HEREON, OR ATTACHED ARE A CORRECT REPRESENTATION OF A SURVEY I PERFORMED DURING MAY THRU JULY 1981, FOR THE U.S. FOREST SERVICE IN ACCORDANCE WITH THE STATUTES OF THE STATE OF OREGON AND WITH THE ARTICLES OF MY CONTRACT."

*David E. Paoli*

DAVID E. PAOLI  
REGISTERED LAND SURVEYOR  
OREGON LICENSE NO. PLS 1289



## LEGEND



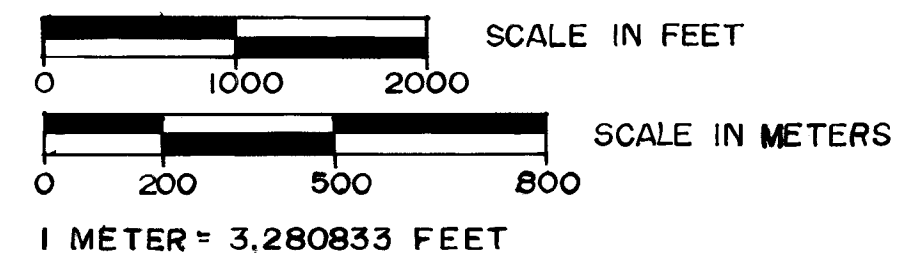
FOUND BRASS CAP MONUMENT SET BY THE FOLLOWING:  
W = BLM X = R.S. 583 Y = JACKSON COUNTY Z = PLS 1137  
SET 2-1/2" DIA. x 30" L.G. IRON POST WITH 2-1/2" DIA BRASS CAP.  
PROPERTY LINE ESTABLISHED AND POSTED THIS SURVEY.  
SECTION LINE CALCULATED FROM TRAVERSE SURVEY.  
INTERIOR SECTION SUBDIVISION LINE.  
GOVERNMENT RECORD, ch = chain m = meters  
ORIGINAL GLO LINE TREE

## HISTORY

TOWNSHIP LINES AND SUBDIVISION OF TOWNSHIP 32 SOUTH, RANGE 4 EAST, WAS PERFORMED BY RUFUS S. MOORE UNDER CONTRACTS NO. 496 AND 504 IN 1884. MANY OF THE ORIGINAL CORNERS HAVE BEEN FOUND AND REMONUMENTED SINCE THEN BY BLM, JACKSON COUNTY AND OTHERS. SEE THE NARRATIVE.

EXAMINED AND ACCEPTED FOR THE  
U.S. FOREST SERVICE THIS 20 DAY  
OF Sept. 1981.  
*Donald Branch* C.O.P.

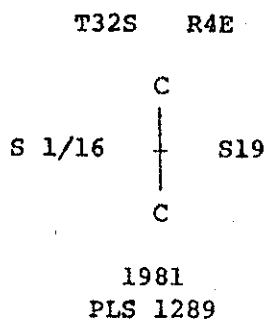
BASIS OF BEARING - DONALD BRANCH, OCTOBER 1980 SURVEY



8998

2. CS 1/16 Corner, Section 19, T32S, R4E.

I set a 2½" diameter brass cap on a 30" long galvanized metal pipe marked as follows:



From which the following references are blazed, scribed, tagged and painted:

A 8" Fir bears N 23° W, 4.5 feet, scribed CS 1/16 S19 BT.

A 21" Fir bears S 73° E, 10.9 feet, scribed CS 1/16 S19 BT.

Date: 8/13/81  
David E. Paoli, PLS 1289  
P. O. Box 737  
Fort Bragg, CA 95437

REGISTERED  
PROFESSIONAL  
LAND SURVEYOR

*David E. Paoli*

OREGON  
SEPTEMBER 23, 1977  
DAVID E. PAOLI  
1289

8998

I found a brass cap on a galvanized metal pipe marked as follows:

T32S R4E  
S19  
—  
S30  
1980  
PLS 1137

From which the following references:

A 12" W. Fir with blazes, scribed, tagged and painted, bears S 70° W, 76.0 feet.

A 14" Cedar with blazes, scribed, tagged and painted, bears N 8° E, 17.5 feet.

11. W 1/16 Corner between Sections 19 and 30, T32S, R4E.

I found a brass cap on a galvanized metal pipe marked as follows:

T32S R4E  
S19  
W 1/16 ——— S30  
1980  
PLS 1137

From which the following references:

A 24" D. Fir with blazes, scribed, tagged and painted, bears N 29° E, 22.4 feet.

A 18" Hemlock with blazes, scribed, tagged and painted, bears N 70° W, 20.4 feet.

Corners I Set:

1. SW 1/16 Corner of Section 19, T32S, R4E.

I set a 2½" diameter brass cap on a 30" long galvanized metal pipe marked as follows:

T32S R4E  
SW 1/16 ——— S19  
1981  
PLS 1289

From which the following references are blazed, scribed, tagged and painted:

A 10" Cedar bears N 49° W, 10.6 feet, scribed "SW 1/16 S19 BT."

A 8" W. Fir bears S 15° W, 15.5 feet, scribed "SW 1/16 S19 BT."

8998

From which the following references:

- A 20" dead Fir with blaze, tagged and painted, bears N 15°W, 13.0 feet.
- A 20" dead Fir, blazed, scribed, tagged and painted, bears N 39°W, 8.8 feet.
- A 15" Fir, blazed, tagged and painted, bears N 86°E, 19.9 feet.
- A 14" Hemlock, blazed, tagged and painted, bears S 67°E, 67.3 feet.
- A 25" W. Fir, blazed, tagged and painted, bears S 45°W, 52.7 feet.
- A 16" W. Fir with tag bears S 72°E, 23.5 feet.
- I blazed, scribed "T32S R3E S24 BT," painted and tagged a 20" Hemlock which bears N 5°W, 36.4 feet.

8. ¼ Corner between Section 18 and Section 19, T32S, R4E.

I found a brass cap on a galvanized metal pipe marked as follows:

T32S    R4E  
  
          S18  
¼ —————  
          S19  
  
          1981  
          PLS 1137

From which the following references:

- A 6" W. Fir with blazes, scribed, tagged and painted bears N 82°E, 9.5 feet.
- A 13" Hemlock with blazes, scribed, tagged and painted bears S 3°W, 60.2 feet.

9. ¼ Corner between Sections 19 and 20, T32S, R4E.

I found a brass cap on a galvanized metal pipe marked as follows:

T32S    R4E  
          ¼  
          |  
          S19 | S20  
  
          1981  
          PLS 1137

From which the following references:

- A 19" W. Fir with blazes, scribed, tagged and painted, bears S 75°E, 14.5 feet.
- A 16" W. Fir with blazes, scribed, tagged and painted, bears S 9°W, 21.3 feet.

10. ¼ Corner between Sections 19 and 30, T32S, R4E.

8998

5. ¼ Corner between Section 24, T32S, R3E and Section 19, T32S, R4E.

I found a brass cap on a galvanized metal pipe marked as follows:

T32S	
R3E	R4E
¼	
24	19
CS 1961	

From which the following references:

- A 12" Chinquapin with blazes, scribed, tagged and painted bears N 60° W, 14.3 feet.
- A 26" Fir snag with blaze and tag bears S 40° E, 27.2 feet.
- A 13" Chinquapin blazed, scribed, tagged and painted bears S 22° E, 34.7 feet.
- A 5/8" iron rod, no tag, bears South, 11.0 feet.

6. Line Tree between Section 24, T32S, R3E and Section 19, T32S, R4E.

Rufus S. Moore describes a Fir 40 inches in diameter at 11.08 chains North of the corner common to Sections 24 and 25, T32S, R3E and Sections 19 and 30, T32S, R4E. I found a 53" diameter D. Fir at N 0° 02' 50" E, 738.26 feet from the above-mentioned corner. This fir had 3 healed hack marks on each side and a metal tag from Elk Lumber Company designating it a line tree.

I blazed, scribed, painted and tagged the following bearing trees for this corner:

- A 30" D. Fir bears S 62° E, 47.9 feet, scribed AP S19 BT.
- A 13" Hemlock bears S 25° W, 58.2 feet, scribed AP S24 BT.

7. SW Corner of Section 19, the corner common to Sections 24 and 25, T32S, R3E and Sections 19 and 30, T32S, R4E.

I found a brass cap on a galvanized metal pipe marked as follows:

T32S	R3/4E
24	19
25	30

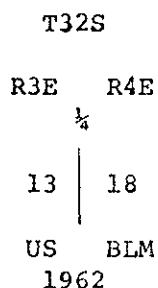
US BLM 1962  
CS 1961

8998

- A 60"D. Fir with blaze, tagged and painted, bears S 38° W, 15.0 feet.
- A 12" W. Fir with blazes, tagged and painted, bears N 24° W, 29.3 feet.
- A 10" W. Fir with blazes, tagged and painted, bears N 38° E, 17.0 feet.
- A 10" W. Fir with blazes, tagged and painted, bears S 22° E, 18.4 feet.

3. ¼ Corner between Section 13, T32S, R3E and Section 18, T32S, R4E.

I found a brass cap on a galvanized metal pipe in a mound of stones marked as follows:

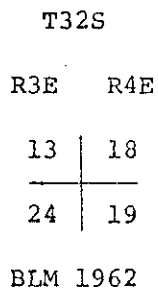


From which the following references:

- A 12" D. Fir with blaze, tagged and painted, bears N 87° W, 12.5 feet.
- A 17" D. Fir with blazes, tagged and painted, bears S 22° E, 26.8 feet.

4. NW Corner of Section 19, the corner common to Sections 13 and 24, T32S, R3E and Sections 18 and 19, T32S, R4E.

I found a brass cap on a galvanized metal pipe marked as follows:



From which the following references:

- A 5" Hemlock with blaze, tagged and painted, bears S 8° W, 28.8 feet.
- A 7" Hemlock with blazes, tagged and painted, bears S 11½° W, 31.2 feet.
- A 12" D. Fir snag, blazed and scribed and painted, bears S 59° W, 6.9 feet.
- A 14" D. Fir with blaze, tagged and painted, bears N 6° W, 31.8 feet.
- A 12" Hemlock snag, with blaze, tagged and painted, bears N 56° E, 11.0 feet.
- A 7" Hemlock with blazes bears S 1° E, 18.8 feet.
- A 9" Hemlock with blaze and tag bears S 1° E, 33.6 feet.
- I blazed, scribed, painted and tagged a 27" Hemlock which bears N 8° E, 44.0 feet. Scribing reads "T32S, R4E, S18 BT."

8998

Traversing between the W 1/16 Corner between Section 19 and Section 30 and the SW Corner of Section 19 as my basis of bearings. I then ran a closed traverse along the Range Line to the West 1/4 Corner of Section 7 and back. I then ran a closed loop around Section 19. Major equipment used was a Topcon 20" theodolite and Hawkeye 1600 electronic distance meter.

From my closed traverses I was able to calculate the position of the SW 1/16 Corner and the CS 1/16 Corner of Section 19 and establish those corners, as well as post the lines as shown on the accompanying drawing.

Corners Accepted for Control:

1. 1/4 Corner between Section 12, T32S, R3E and Section 7, T32S, R4E.

I found a brass cap on a galvanized iron pipe marked:

1963  
T32S  
  
R3E    R4E  
12    |    7  
      |  
      1/4 cor  
      RS583

From which the following references:

- A 10" Chinquapin with blazes, tag and painted, bears N 55° W, 17.3 feet.
- A 16" D. Fir with blaze, tagged and painted bears S 77° E, 40.0 feet.

2. SW Corner, Section 7, the corner common to Sections 12 and 13, T32S, R3E and Sections 7 and 18, T32S, R4E.

I found a brass cap on a galvanized metal pipe marked as follows:

1963  
T32S  
  
R3E    R4E  
12	7
13    |    18  
  
Sec. Cor.  
RS583

From which the following references:

8998

SURVEY NARRATIVE TO COMPLY WITH PARAGRAPH 209.250, OREGON REVISED STATUTES

Survey For: Rogue River National Forest,  
P. O. Box 520  
Medford, Oregon 97501

Location: Sections 7, 18 and 19, Township 32 South, Range 4 East, Willamette  
Meridian, Jackson County, Oregon

Contract No: 53-04H1-1-8428N

Purpose: To establish property corners and mark boundaries between National  
Forest and private lands.

Basis of Bearing: Line between SW Section Corner, Section 19 and W 1/16  
Corner between Sections 19 and 30 as established by Donald  
Branch (PLS 1137) Survey #8596.

Procedure:

Before starting the survey, an investigation of the controlling corners  
was made.

The original section and  $\frac{1}{4}$  corners were established by Rufus S. Moore in  
1884. Many of the original corners have been found and remonumented. Of the  
corners I visited, one original monument remains. This is the line tree  
between Section 19, R4E and Section 24, R3E. The corners I visited that have  
been remonumented are:

$\frac{1}{4}$  Corner between Section 12, R3E and Section 7, R4E, by RS 583 (Robert M.  
Vincent), 1963.

SW Section Corner, Section 7, by Robert M. Vincent, 1963.

$\frac{1}{4}$  Corner between Section 13, R3E and Section 18, R4E, by BLM, 1962.

NW Section Corner, Section 19, by BLM, 1962.

$\frac{1}{4}$  Corner between Section 24, R3E and Section 19, R4E, by C. S., 1961.

SW Section Corner, Section 19, by BLM, 1962.

$\frac{1}{4}$  Corner between Section 18 and Section 19, by PLS 1137 (Donald Branch), 1981.

Other corners have been set by proportionate measurement. These are:

$\frac{1}{4}$  Corner between Section 19 and Section 30 by Donald Branch, 1980.

W 1/16 Corner between Section 19 and 30 by Donald Branch, 1980.

$\frac{1}{4}$  Corner between Section 19 and Section 20 by Donald Branch, 1981.

All the above corners were held as controlling corners in this survey.  
More information about the corners and their bearing trees will be summarized  
at the end of this narrative.