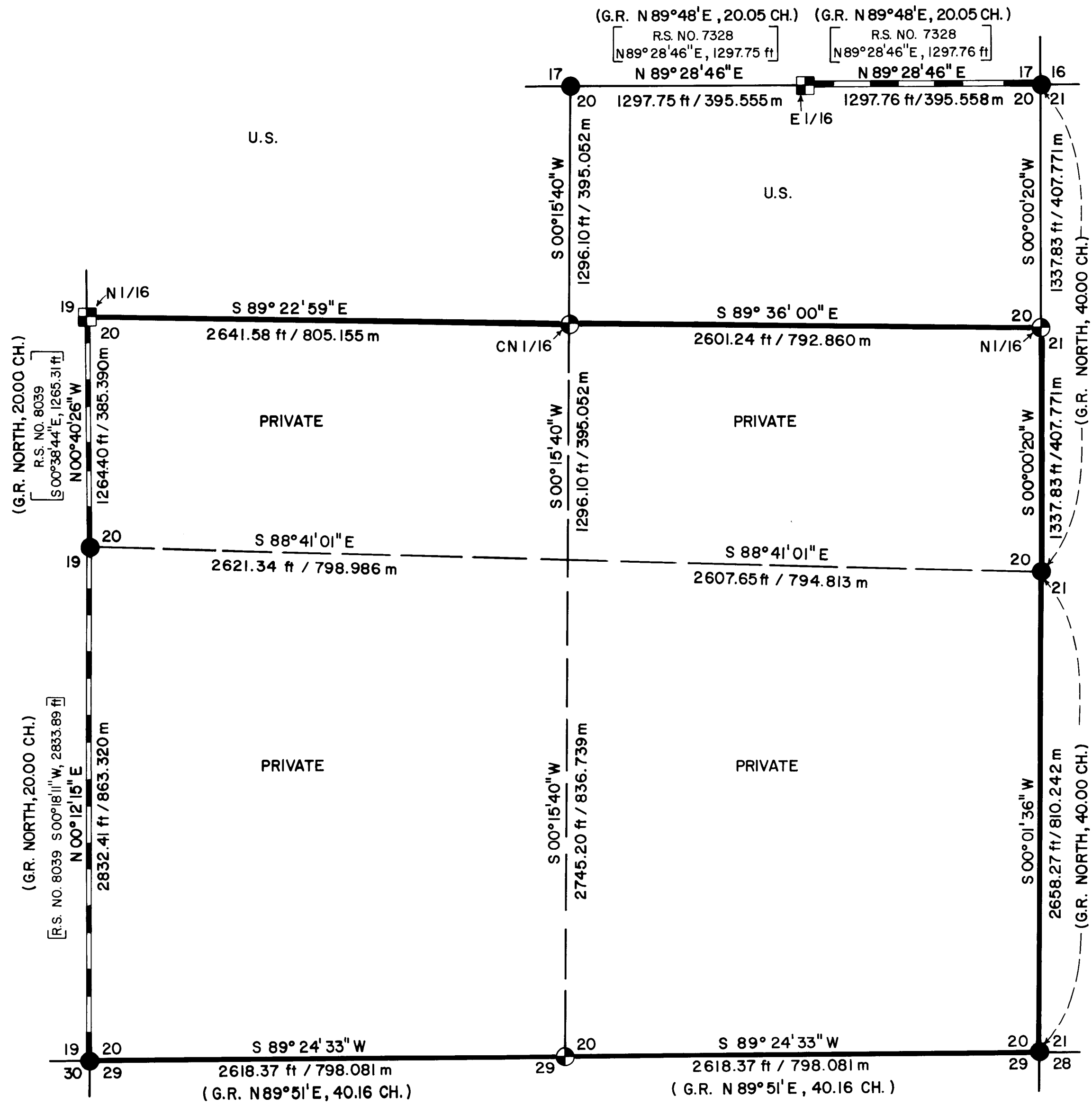


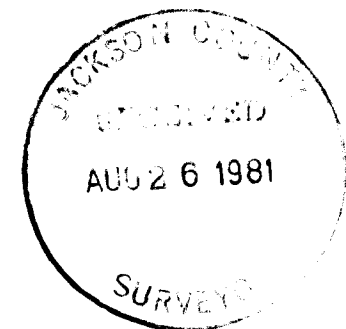
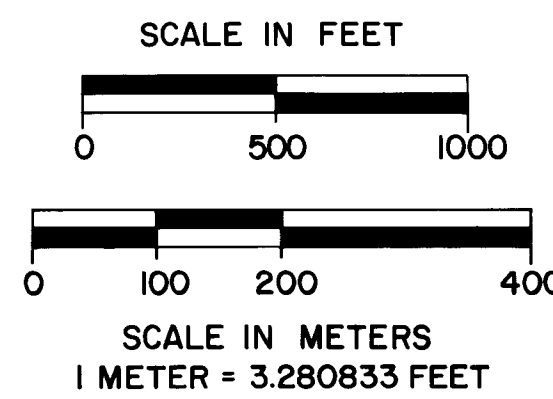
MAP OF SURVEY FOR ROGUE RIVER NATIONAL FOREST P.O. BOX 520 MEDFORD, OREGON JULY 20, 1981



BASIS OF BEARING:
SOLAR OBSERVATION ON RECORD SURVEY
NO. 7328

HISTORY OF SURVEYS

THE ORIGINAL CORNERS FOR SECTION 20 WERE ESTABLISHED BY RUFUS S. MOORE UNDER CONTRACT NO. 475, DATED JULY 3, 1883. THE NORTHEAST, SOUTHEAST, SOUTHWEST, AND EAST ONE-QUARTER CORNERS OF SECTION 20 WERE REMONUMENTED BY THE BLM IN 1975. THE NORTH AND WEST ONE-QUARTER CORNERS OF SECTION 20 WERE REMONUMENTED BY THE JACKSON COUNTY SURVEYOR IN 1978. THE EAST ONE-SIXTEENTH CORNER OF SECTIONS 17 AND 20 WAS ESTABLISHED BY HAROLD L. CENTER, P.L.S. 1071, UNDER RECORD SURVEY NO. 7328, DATED JUNE 22, 1978. THE NORTH ONE-SIXTEENTH CORNER OF SECTIONS 19 AND 20 WAS ESTABLISHED BY GERALD V. NYGREN, P.L.S. 1035, UNDER RECORD SURVEY NO. 8039, DATED SEPTEMBER 1979. NO OTHER SURVEYS ARE OF RECORD.



LEGEND

- FOUND STANDARD BLM OR COUNTY SURVEYOR BRASS CAP MONUMENT
- ⊙ SET 2 1/2" DIA. GALVANIZED IRON PIPE WITH 2 1/2" DIA. BRASS CAP
- MONUMENT SET - REF. RECORD SURVEYS NO. 8039 & 7328
- PROPERTY LINE ESTABLISHED AND POSTED THIS SURVEY
- SECTION LINE CALCULATED FROM TRAVERSE SURVEY
- SUBDIVISION LINE CALCULATED FROM TRAVERSE SURVEY
- LINE PREVIOUSLY POSTED REF. R.S. NO. 7328 & 8039

CERTIFICATE OF SURVEY

I, HAROLD L. CENTER, REGISTRATION NO. 1071, REGISTERED PROFESSIONAL LAND SURVEYOR, STATE OF OREGON, HEREBY CERTIFY THAT THIS MAP CORRECTLY REPRESENTS A SURVEY MADE BY ME OR UNDER MY DIRECTION, IN CONFORMANCE WITH THE LAWS OF THE STATE OF OREGON, AT THE REQUEST OF THE U.S. FOREST SERVICE.

U.S. DEPT. OF AGRICULTURE FOREST SERVICE REGION 6 ROGUE RIVER NAT'L FOREST	
DEPENDENT RESURVEY AND SECTION SUBDIVISION	
SEC. 20, T. 40 S., R. 2 W., W.M. JACKSON COUNTY, OREGON	
REVIEWED BY <i>[Signature]</i>	DATE <i>8/24/81</i>
REVIEWED BY <i>[Signature]</i>	DATE <i>8/25/81</i>

SURVEY NARRATIVE TO COMPLY WITH
PARAGRAPH 209.250 OREGON REVISED STATUTES

SURVEY FOR: Rogue River National Forest
P. O. Box 520
Medford, Oregon 97501

LOCATION: Section 20, Township 40 South, Range 2 West,
Willamette Meridian, Jackson County, Oregon.

BASIS OF BEARING: Solar Observation.

PURPOSE: To establish corners and mark and post National
Forest boundaries within Section 20.

PROCEDURE: Prior to commencement of this survey, an investiga-
tion of all controlling section corners, one-
quarter section corners, and one-sixteenth corners
was made. The north and west one-quarter corners
of Section 20 were recovered and remonumented by
the Jackson County Surveyor. The Bureau of Land
Management recovered and remonumented the
northeast, southeast, and southwest section cor-
ners, and the east one-quarter corner of Section
20. The north one-sixteenth corner common to
Sections 19 and 20 was established by proportionate
measure by Surveyor Gerald V. Nygren, P.L.S. 1035,
as part of Record Survey No. 8039, dated September
1979. The east one-sixteenth corner common to
Sections 17 and 20 was established by me as part of
Record Survey No. 7328, dated June 22, 1978.

With the required controlling corners verified, I
established a series of traverse lines tying all
corners to part of a closed traverse. From this
information a search area was determined for the
missing south one-quarter corner of Section 20.
A diligent search for evidence of the original
corner was performed without success. Topographic
calls from the original survey were thoroughly
field checked and compared to existing ground con-
ditions, and no reasonable fit could be determined.
I, therefore, reestablished this corner by propor-
tionate measure.

True lines were posted with polymer fence posts
with National Forest boundary signs attached.
Trees along the true line were blazed and painted
with red timber marking paint.

EQUIPMENT USED: This survey was performed utilizing a Wild T-2
Theodolite and a Hewlett-Packard 3808 Electronic
Distance Meter.

Corners Accepted For Control

The east one-sixteenth corner and one-quarter corner common to Sections 17
and 20, and the section corner common to Sections 16, 17, 20, and 21,
Township 40 South, Range 2 West, were described within Record Survey No.
7328 and were found as described within that survey, with one exception.
At the one-quarter corner common to Sections 17 and 20, the corrected
reference is:

A dead and down pine 20-inches in diameter, stump hole of which bears N
24° 15' E., 7.7 feet distance.

Section corner common to Sections 19, 20, 29 and 30, Township 40 South,
Range 2 West.

At the corner point I found a standard Bureau of Land Management brass cap monument marked:

U. S. Dept. of Interior
Unlawful to Disturb
T40S R2W

S19	S20
S30	S29

1975
Cadastral Surveys
Bureau of Land Management

From which the following references:

A Douglas-fir 13-inches in diameter bears S 03° 12' E., 34.5 feet distance with a healed blaze.

A Douglas-fir 18-inches in diameter bears S 23° 36' W., 25.0 feet distance with a healed blaze.

A dead and down Douglas-fir 24-inches in diameter, stump hole of which bears S 40° 22' W., 16.7 feet distance, "BT" scribe marks visible on tree.

A Douglas-fir 19-inches in diameter bears N 77° 57' E., 41.6 feet distance with "OS R W BT" scribe marks visible.

A Douglas-fir 11-inches in diameter bears S 65° 17' E., 35.6 feet distance with "T40S R2W S29 BT" scribe marks visible.

New references:

A fir 5-inches in diameter bears N 36° 52' W., 50.4 feet distance, scribed "X BT".

Section corner common to Sections 20, 21, 28 and 29, Township 40 South, Range 2 West.

At the corner point I found a standard Bureau of Land Management brass cap monument marked:

U. S. Dept. of Interior
Unlawful to Disturb
T40S R2W

S20	S21
S29	S28

1975
Cadastral Surveys
Bureau of Land Management

From which the following references:

A Douglas-fir 23-inches in diameter bears N 50° 45' W., 34.0 feet distance with a healed blaze.

A pine 10-inches in diameter, with a broken top, bears S 63° 52' E., 77.9 feet distance with a healed blaze.

A dead and down fir 25-inches in diameter bears S 23° 23' E., 21.0 feet distance.

A fir snag 29-inches in diameter bears S 28° 21' W., 40.0 feet distance with a healed blaze.

New references:

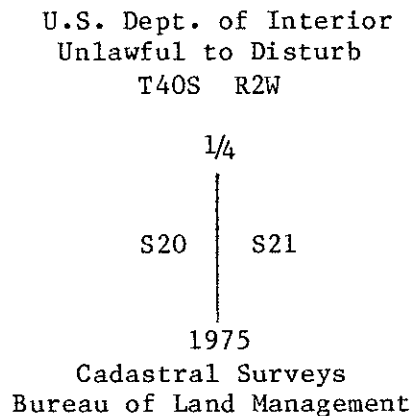
A Douglas-fir 26-inches in diameter bears N 47° 56' E., 19.5 feet distance, scribed "T40S R2W S21 LS 1071 BT".

A pine 6-inches in diameter bears S 31° 31' E., 9.3 feet distance, scribed "X BT".

A Douglas-fir 8-inches in diameter bears S 85° 03' W., 75.0 feet distance, scribed "T40S R2W S29 LS 1071 BT".

One-quarter corner common to Sections 20 and 21, Township 40 South, Range 2 West.

At the corner point I found a standard Bureau of Land Management brass cap monument marked:



From which the following references:

A pine 9-inches in diameter bears S 29° 50' E., 8.3 feet distance with scribe marks " 1/4 S" visible on partially healed blaze.

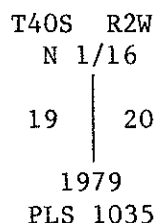
A decayed, burned pine stump, diameter indeterminate, bears N 50° 08' W., 59.5 feet distance, no marks visible.

A Douglas-fir 14-inches in diameter bears N 20° 52' W., 6.8 feet distance, with scribe marks "S 20" visible on partially healed blaze.

A pine snag 41-inches in diameter bears S 87° 18' E., 16.7 feet distance, with scribe marks "1/4 S BT" visible on partially healed double blaze.

North one-sixteenth corner common to Sections 19 and 20, Township 40 South, Range 2 West.

At the corner point I found a 2 1/2-inch diameter iron post with a 2 1/2-inch diameter brass cap marked:



From which the following references:

A Douglas-fir 9-inches in diameter bears S 38° 27' E., 14.7 feet distance with scribe marks "N 1/16 S20 T40S R2W BT" visible on partially healed double blaze; washer nailed on upper blaze.

A Douglas-fir 15-inches in diameter bears S 20° 28' W., 16.4 feet distance with scribe marks "N 1/16 S19 T40S R2W BT" visible on partially healed double blaze, washer nailed on upper blaze.

One-quarter corner common to Sections 19 and 20, Township 40 South, Range 2 West.

At the corner point I found a standard Jackson County Surveyors monument marked:

Jackson County 1979	
T40S	R2W
19	20
1/4S	

From which the following references:

A Douglas-fir 8-inches in diameter bears S 50° 36' W., 30.2 feet distance with scribe marks "CS BT" visible on partially healed blaze.

A dead and down madrone 10-inches in diameter, stump hole of which bears N 73° 37' W., 25.7 feet distance; scribe marks "1/4S" visible on open blaze.

A fir 6-inches in diameter bears N 80° 20' E., 18.5 feet distance with scribe marks "CS BT" visible on partially healed blaze.

A Douglas-fir stump 36-inches in diameter bears S 50° 48' E., 22.7 feet distance with bark scribe marks "BT" visible.

Corners Established This Survey

One-quarter corner common to Sections 20 and 29, Township 40 South, Range 2 West.

At the corner point I set a 2¹/₂-inch diameter by 30-inch long galvanized iron post protruding 5-inches above ground, with a 2¹/₂-inch diameter brass cap marked:

T40S	R2W
1/4	<u>S20</u> S29
1981	
LS 1071	

From which the following references:

A fir 9-inches in diameter bears S 76° 26' W., 31.5 feet distance, scribed "1/4 S29 LS 1071 BT".

A Douglas-fir 15-inches in diameter bears N 06° 06' W., 21.9 feet distance, scribed "1/4 S20 LS 1071 BT".

North one-sixteenth corner common to Sections 20 and 21, Township 40 South, Range 2 West.

