



BASIS OF BEARINGS  
RECORDED SURVEY 5379

Scale 1 inch = 400 feet

MAP OF SURVEY  
FOR

KELTNER, MILAM AND CO., LTD.  
3000 WEST CHARLESTON BLVD.  
SUITE 3  
LAS VEGAS, NEVADA

DENNIS O. BEATTY  
1140 OLD HIGHWAY 99 SOUTH  
ASHLAND, OREGON

JACK R. CANNON  
4320 OMAHA  
PHOENIX, OREGON

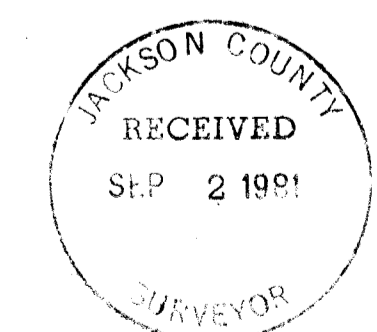
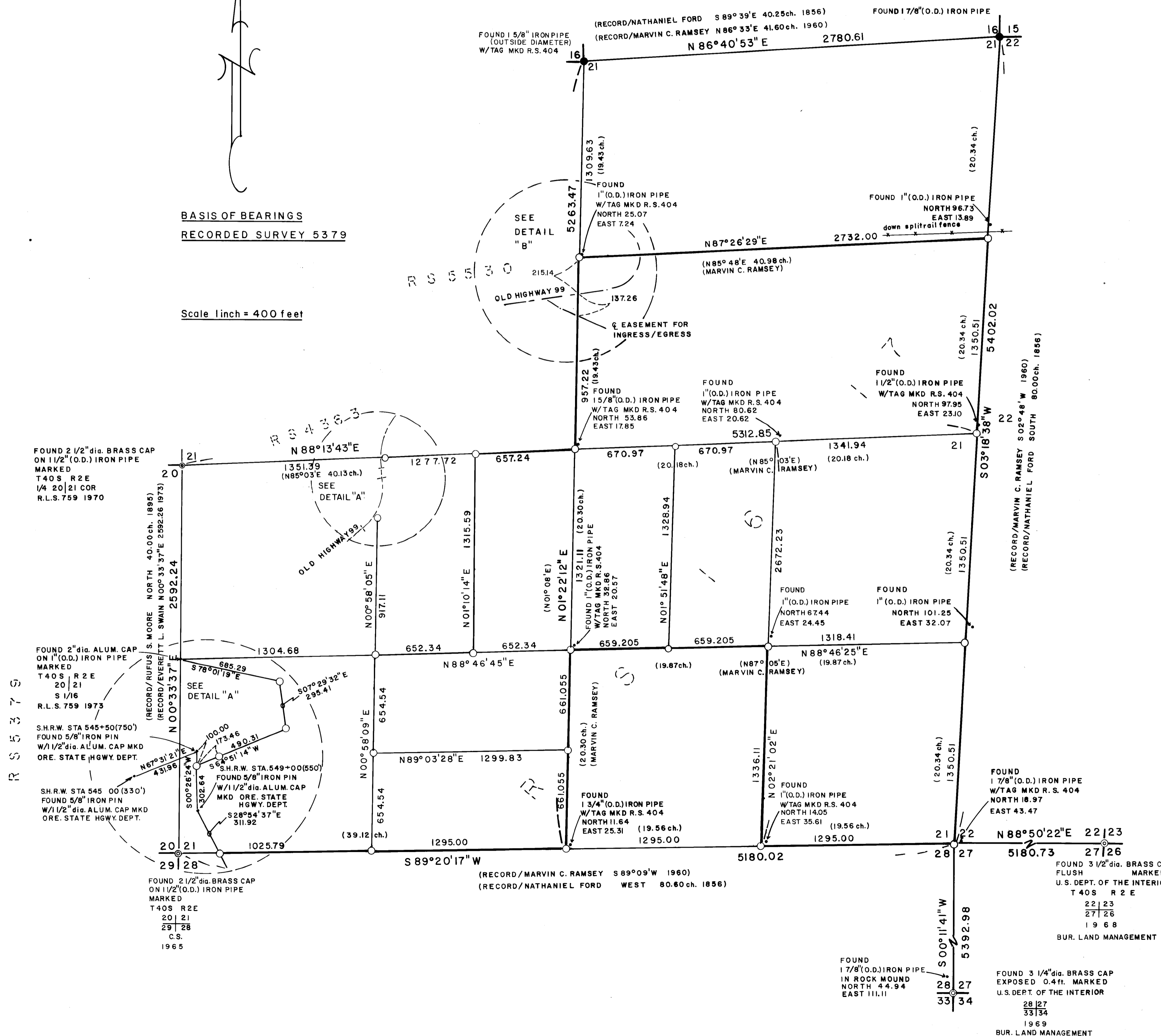
EARLE L. HENDRICKS  
3185 CROWNVIEW DRIVE  
RANCHO PALOS VERDES, CALIF.

SURVEY LOCATED IN N.E. 1/4, S.E. 1/4, S.W. 1/4 OF SECTION 21, T.40S., R.2E., W.M.

LEGEND

- Set 5/8 inch x 30 inch iron reinforcing pin with a yellow, 1/4 inch, plastic cap marked PIERSON OPLS 1950.
- ⊙ Found monument as shown
- Found monument as shown
- Found monument as shown
- O.D. Outside Diameter
- ⊕ Centerline
- All distances shown are measured in feet and tenths unless noted otherwise
- Fence line

DATE JULY 20, 1981



FOUND 3 1/2" dia. BRASS CAP  
FLUSH MARKED  
U.S. DEPT. OF THE INTERIOR  
T.40S. R.2E.  
22 23  
27 26  
1968  
BUR. LAND MANAGEMENT

FOUND 1 7/8" (O.D.) IRON PIPE  
IN ROCK MOUND  
NORTH 44.94  
EAST 111.11  
28 27  
33 34  
1969  
BUR. LAND MANAGEMENT

(19) At the Southwest center 1/16 I set a 5/8 inch by 30 inch iron pin as shown on the Amended Map of Survey from which:

A 12½ inch white oak bears S 37° 07' W, 27.8 feet, marked on double blazes RS 1650, BT;

An 11 3/4 inch Douglas Fir bears S 20° 50' E, 65.65 feet, marked on double blazes RS 1650, BT.

Note: All trees measured were measured to the side center of the tree.

REGISTERED  
PROFESSIONAL  
LAND SURVEYOR

*John Scott Pierson*

OREGON  
JULY 14, 1978  
JOHN S. PIERSON  
1650

\*\* RECEIVED \*\*  
Date 4/29/82 By SK  
This survey Consists of:  
1 sheet(s) Map  
9 page(s) Narrative  
JACKSON COUNTY  
SURVEYOR

An 8 inch diameter white oak with open blaze,  
no scribing, bears S 34° 07' E, 63.50 feet.

- (14) At the North center 1/16 corner of Section 21, I set a 5/8 inch by 30 inch iron pin as shown on the Amended Map of Survey, from which:
- A found 1 inch diameter axle bears S 23° 51' 58" E, 93.17 feet;
  - A found 1 inch outside diameter iron pipe with metal tag marked R. S. 404 bears N 12° 37' 51" E, 25.69 feet, from which:
    - A 17 inch diameter cedar with double blaze, healed, bears S 16° 57' E, 37.05 feet.
    - A 13 inch diameter cedar with double blaze, healed, bears S 63° 14' E, 35.40 feet.
- (15) At the East Southwest center 1/64 I set a 5/8 inch by 30 inch iron pin as shown on the Amended Map of Survey, from which:
- A 7½ inch diameter white oak bears N 83° 24' W, 36.0 feet, marked on double blazes RS 1650, BT;
  - A 6½ inch diameter white oak bears N 51° 18½' E, 47.2 feet marked on double blazes RS 1650, BT.
- (16) At the East West center 1/64, I set a 5/8 inch by 30 inch iron pin as shown on the Amended Map of Survey from which:
- An 11 3/4 inch diameter white oak bears N 45° 03' E, 35.6 feet, marked on double blazes RS 1650, BT;
  - A 7½ inch diameter white oak bears S 0° 09' E, 25.00 feet, marked on double blazes RS 1650, BT.
- (17) At the West 1/16 corner common to Sections 21 and 28, I set a 5/8 inch by 30 inch iron pin as shown on the Amended Map of Survey from which:
- A 15 inch diameter white fir bears S 38° 24' E, 17.3 feet, marked on double blazes RS 1650, BT;
  - A 13 inch diameter white fir bears N 61° 52' W, 37.5 feet marked on double blazes RS 1650, BT.
- (18) At the South Southwest center 1/64 I set a 5/8 inch by 30 inch iron pin, as shown on the Amended Map of Survey, from which:
- A 9½ inch diameter cedar bears S 53° 57' W, 36.6 feet, marked on double blazes RS 1650, BT;
  - A 12 3/4 inch diameter white fir bears N 1° 52' E, 29.9 feet, marked on double blazes RS 1650, BT.

A 17 inch diameter Douglas Fir with single blaze healed, bears S 09° 41' W, 36.24 feet. (Record/ Recorded Survey 1617 S 09° 30' W, 14 links.)

A 14 inch diameter Douglas Fir with single blaze, healed, bears N 65° 33' W, 9.20 feet. (Record/ Recorded Survey 1617 N 66° W, 56 links.)

A discrepancy between my measured distances and record measured distances to each bearing tree appears to result from a transposition of the record measured distances of Recorded Survey 1617.

- (11) At the South South Center 1/64 corner, I set a 5/8 inch by 30 inch iron pin as shown on the Amended Map of Survey from which:

A 9 inch diameter white fir bears S 25° 45' W, 24.45 feet, marked on double blazes RS 1650, BT;

A 6 inch diameter cedar bears N 23° 47' E, 25.4 feet, marked on double blazes RS 1650, BT.

- (12) At the center South 1/16 corner of Section 21, I set a 5/8 inch by 30 inch iron pin as shown on the Amended Map of Survey, from which:

A 7½ inch diameter white oak bears S 21° 37½' E, 33.9 feet marked on double blazes RS 1650, BT;

A found 1 inch outside diameter iron pipe with metal tag marked R. S. 404 bears N 25° 34' 54" E, 36.44 feet.

- (13) At the center ¼ corner of Section 21, I set a 5/8 inch by 30 inch iron pin as shown on the Amended Map of Survey, from which:

A 10½ inch diameter white oak bears S 86° 16' E, 49.08 feet, marked on double blazes RS 1650, BT.

A found 1 5/8 inch outside diameter iron pipe with metal tag marked R. S. 404 bears N 14° 04' 19" E, 55.91 feet from which:

A 12 inch diameter white oak with double blaze, healed, bears S 32° 55' W, 52.00 feet.

A 14 inch diameter white oak with double blaze, healed, bears N 21° 06' W, 65.71 feet.

A 12 inch diameter Douglas Fir with open blaze, scribed C ¼, S 21 RS 404, bears N 57° 50' E, 70.92 feet.

A 9 inch diameter white oak with open blaze, no scribing, bears S 87° 51' E, 65.93 feet.

An 11 inch diameter white oak with single blaze, partly healed, bears S 82° 46' E, 28.90 feet.

- (6) At the Southeast 1/16 corner of Section 21, I set a 5/8 inch by 30 inch iron pin as Shown on the Amended Map of Survey, from which:
- A 7 inch diameter Douglas Fir bears S 6° 54' E, 27.35 feet, marked on double blaze RS 1650, BT;
  - A found 1 inch outside diameter iron pipe bears N 14° 17' 33" E, 69.60 feet, from which:
    - A 16 inch diameter Douglas fir with double blaze, healed, bears S 63° 58' W, 8.40 feet.
    - A 22 inch diameter cedar with double blaze healed, bears S 55° 52' E, 42.46 feet.
- (7) At the East center 1/16 corner of Section 21, I set a 5/8 inch by 30 inch iron pin as shown on the Amended Map of Survey from which:
- A 12 inch diameter Douglas Fir bears S 01° 20' W, 44.60 feet, marked on double blazes RS 1650, BT;
  - A found 1 inch outside diameter iron pipe with metal tag marked R. S. 404, bears N 11° 04' 42" E, 82.15 feet, from which:
    - A 14 inch diameter cedar with single blaze, scribing partly visible, bears N 63° 43' E, 41.40 feet.
    - A 24 inch diameter cedar with single blaze, healed, bears S 49° 31' E, 21.00 feet.
- (8) At the West Southwest center 1/64 corner, I set a 5/8 inch by 30 inch iron pin as shown on the Amended Map of Survey from which:
- An 8 inch diameter white fir bears N 83° 08' E, 44.60 feet marked on double blazes RS 1650, BT.
  - A 7½ inch diameter white fir bears N 01° 26' W, 18.70 feet, marked on double blazes RS 1650, BT.
- (9) At the West East Center 1/64 corner, I set a 5/8 inch by 30 inch iron pin as shown on the Amended Map of Survey from which:
- A 13 inch diameter white oak bears S 70° 01' W, 17.70 feet, marked on double blazes RS 1650, BT;
  - An 8 inch diameter cedar bears N 13° 56' E, 38.10 feet, marked on double blazes RS 1650 BT.
- (10) At the quarter corner common to Sections 21 and 28, I set a 5/8 inch by 30 inch iron pin as shown on the Amended Map of Survey, from which:
- A 17 inch diameter Douglas Fir with a single healed blaze bears S 27° 56' E, 27.25 feet (one of Ramsey's Bearing Trees).
  - A found 1 3/4 inch outside diameter iron pipe with a metal tag marked R. S. 404 bears N 58° 18' 07" E, 22.17 feet, from which:

An 11 inch diameter Douglas fir with double blaze, healed, bears N 63° 12' E, 11.70 feet.

- (3) At the quarter corner common to Sections 21 and 22, I set a 5/8 inch by 30 inch iron pin as shown on the Amended Map of Survey, from which:

A 10 inch diameter Douglas fir bears S 36° 15' W, 27.87 feet marked on double blaze RS 1650, BT;

A found 1½ inch outside diameter iron pipe with metal tag marked R. S. 404, bears N 9° 35' 19" E, 99.95 feet, from which:

A 7 inch diameter fir, dead and down, with double blaze, scribing visible, bears S 74° 43' E, 40.60 feet.

A 20 inch diameter fir with single blaze, healed, bears S 52° 59' W, 40.38 feet.

- (4) At the North 1/16 corner common to Sections 21 and 22, I set a 5/8 inch by 30 inch iron pin as shown on the Amended Map of Survey, from which:

A 13 inch diameter Douglas fir bears S 86° 25' W, 1.82 feet marked on double blaze RS 1650, BT;

A found 1 inch outside diameter iron pipe bears N 06° 17' 39" E, 97.32 feet, from which:

A 24 inch diameter fir with single blaze, healed, bears S 74° 04' W, 6.50 feet. (Record/ Recorded Survey 1617, N 60° 30' E, 10 links.)

An 18 inch diameter fir stump with blaze, scribing visible, bears N 62° 08' E, 29.40 feet. (Record/ Recorded Survey 1617, S 74° W, 44 links.)

A discrepancy between my measured bearings and record measured bearings to each bearing tree appears to result from a transposition of the record measured bearings of Recorded Survey 1617.

- (5) At the East 1/16 corner common to Sections 21 and 28, I set a 5/8 inch by 30 inch iron pin as shown on the Amended Map of Survey, from which:

A 12 inch diameter cedar bears N 32° 30' W, 28.90 feet, marked on double blazes RS 1650, BT;

A found 1 inch outside diameter iron pipe with metal tag marked R. S. 404 bears N 61° 32' 39" E, 29.50 feet, from which:

A 9 inch diameter white oak with single blaze, healed, bears S 35° 27' E, 32.60 feet.

A 12 inch diameter Douglas fir with single blaze, healed, bears N 00° 45' W, 15.40 feet.

At the South 1/16 corner common to Sections 20 and 21, I found a 2 inch diameter aluminum cap per Record Survey 5379, marked as shown on Amended Map of Survey, from which:

A 24 inch diameter fir stump with single blaze, scribed B. T.  $\frac{1}{4}/\frac{1}{4}$  cor, bears N 39° 25' E, 28.90 feet.

A 7 inch diameter black oak with single blaze, scribed S 1/16 S 21 BT, bears S 70° 27' E, 12.60 feet.

A 16 inch diameter Douglas fir with single blaze, partly healed, bears S 22° 59' W, 24.50 feet.

The set Government corners are as follows:

The numbers at the left of the description correspond to the numbers on the Amended Map of Survey.

- (1) At the Section corner common to Sections 21, 22, 27 and 28, I set a 5/8 inch by 30 inch iron rod as shown on the Amended Map of Survey, from which:

A 9 inch diameter white oak bears N 23° 52' W, 25.78 feet, marked on double blaze RS 1650, BT;

A 9 inch diameter white oak bears S 80° 16' W, 70.06 feet, marked on double blaze RS 1650, BT;

An 18½ inch diameter Douglas fir bears S 5° 24' E, 83.67 feet, marked on double blaze RS 1650, BT;

A found 1 7/8 inch outside diameter iron pipe with metal tag marked R. S. 404 bears N 58° 10' 36" E, 35.99 feet, from which:

An 8 inch diameter oak with double blaze, healed, bears N 58° 44' W, 6.5 feet.

A 22 inch diameter Douglas fir with double blaze, healed, bears N 61° 40' E, 57.23 feet.

A 20 inch diameter Douglas fir with double blaze, healed, bears S 42° 39' E, 35.36 feet.

A 23 inch diameter Douglas fir snag, with double blaze, partially healed and scribing partially visible, bears S 29° 41' W, 37.70 feet.

- (2) At the South 1/16 corner common to Sections 21 and 22, I set a 5/8 inch by 30 inch iron pin as shown on the Amended Map of Survey, from which:

An 8 inch diameter Ponderosa Pine bears S 66° 56' W, 14.90 feet marked on double blaze RS 1650, BT;

A found 1 inch outside diameter iron pipe bears N 12° 28' 11" E, 103.70 feet, from which:

A 23 inch diameter black oak with double blaze, partly healed, bears S 32° 07' W, 3.70 feet.

A 13 inch diameter white fir with open blaze bears S 42° 49' E, 24.25 feet.

A 13 inch diameter white fir with open blaze bears S 36° 07' W, 44.45 feet.

A 12 inch diameter white fir with open blaze bears N 30° 12' W, 38.00 feet.

A found 1 7/8 inch outside diameter iron pipe in rock mound as shown on Amended Map of Survey, bears N 67° 59' W, 119.85 feet from which:

A 12 inch diameter fir with healed blaze, bears N 59° 40' E, 31.50 feet.

A 19 inch diameter fir with healed blaze bears S 33° 00' E, 38.60 feet.

A 24 inch diameter fir with healed blaze bears S 55° 29' W, 7.20 feet.

A 16 inch diameter fir with healed blaze bears N 36° 56' W, 35.80 feet.

At the Section corner common to Sections 15, 16, 21 and 22, I found a 1 5/8 inch outside diameter iron pipe as shown on the Amended Map of Survey from which:

A 7 inch diameter oak with single blaze healed over, bears N 34° 42' W, 17.45 feet.

A 20 inch diameter oak with single blaze rotted out bears N 29° 36' E, 25.70 feet.

A 16 inch diameter pine with single blaze, scribed, bears N 77° 34' E, 32.90 feet.

A 14 inch diameter pine with single blaze, scribed, bears S 54° 55' E, 24.20 feet. "40 R BT" is partly visible on face.

A 5 inch diameter oak with single healed blaze bears S 08° 20' W, 22.90 feet.

A 17 inch diameter pine with single healed blaze bears S 56° 47' W, 28.03 feet.

At the quarter corner common to Sections 21 and 16, I found a 1 5/8 inch outside diameter iron pipe as shown on the Amended Map of Survey, from which:

An 18 inch diameter fir stump with single blaze, scribing visible, bears S 46° 09' W, 28.40 feet.

A 21 inch diameter pine with single blaze bears N 27° 13' W, 25.20 feet.

A 21 inch oak with single blaze, scribed, bears N 48° 11' E, 25.05 feet.

At the quarter corner common to Sections 20 and 21, I found a 2½ inch diameter brass disc on a 1½ inch iron pipe per Recorded Survey 4250, marked as shown on the Amended Map of Survey.



On the Amended Map of Survey on Detail B, I show a difference between what I found from that of Record Survey 5530. On Record Survey 5530, as shown on the Amended Map of Survey, Detail B, these boundaries were proposed and I found nothing in Deed Record to hold this position as being a Boundary Line Agreement. Also on the same Detail B, I located a potential easement across an existing road to be finalized between Mr. Hendricks and Mr. Cannon.

The found held controlling Sectional Corners are as follows:

At the Section corner common to Sections 20, 21, 28 and 29, I found a 2½ inch diameter brass cap set on an iron pipe marked as shown on the Amended Map of Survey, from which:

A lead plug and tack in the Northwesterly intersection of a gunitite creek wall and a 24" diameter corrugated metal pipe bears N 34° 37' E, 85.14 feet. (Record/ County Surveyor N 34° 46' E, 85.57 feet)

A concrete nail in the Northwesterly intersection of a gunitied creek wall and a 30 inch diameter corrugated metal pipe bears S 52° 52' E, 128.34 feet. (Record/ County Surveyor S 53° 00' E, 128.46 feet)

A concrete nail in the base of a 6 inch diameter air vent pipe bears S 13° 01' E, 152.95 feet. (Record/ County Surveyor S 12° 55' E, 153.00 feet)

At the Section corner common to Sections 22, 23, 26 and 27, I found a 3½ inch diameter brass cap on an iron pipe marked as shown on the Amended Map of Survey. North of and alongside said brass cap was found a 2" outside diameter iron pipe with metal tag marked R. S. 404. From the found brass cap:

A 14 inch diameter white fir bears N 39° 16' W, 17.10 feet.

An 8 inch diameter white fir bears N 2° 36' E, 10.00 feet.

A 30 inch diameter Douglas fir stump bears N 87° 40' E, 34.99 feet.

A 30 inch diameter pine stump bears S 77° 36' E, 27.84 feet.

A 20 inch diameter white fir bears S 24° 38' W, 16.60 feet.

At the Section corner common to Sections 27, 28, 33 and 34, I found a 3¼ inch diameter brass cap marked as shown on the Amended Map of Survey, from which:

A badly decayed 28 inch diameter fir stump with pitch scribe visible bears N 75° 14' E, 4.85 feet.

A 12 inch diameter white fir with healed blaze bears N 74° 26' E, 30.88 feet.



At the South 1/16 corner common to Sections 20 and 21, I found a 2 inch diameter aluminum cap per Record Survey 5379, marked as shown on Map of Survey, page 1, from which:

A 24 inch diameter fir stump with single blaze, scribed B. T.  $\frac{1}{4}/\frac{1}{4}$  cor, bears N 39° 25' E, 28.90 feet.

A 7 inch diameter black oak with single blaze, scribed S 1/16 S 21 BT, bears S 70° 27' E, 12.60 feet.

A 16 inch diameter Douglas fir with single blaze, partly healed, bears S 22° 59' W, 24.50 feet.

At the North center 1/16 corner of Section 21, I set a 5/8 inch by 30 inch iron pin as shown on Map of Survey, page 1, from which:

A 1 inch outside diameter iron pipe with metal tag marked R. S. 404 bears N 16° 06' E, 26.09 feet, from which:

A 17 inch diameter cedar with double blaze, healed, bears S 16° 57' E, 37.05 feet.

A 13 inch diameter cedar with double blaze, healed, bears S 63° 14' E, 35.40 feet.

At the center South 1/16 corner of Section 21, I set a 5/8 inch by 30 inch iron pin as shown on the Map of Survey, page 1, from which:

A 1 inch outside diameter iron pipe with metal tag marked R. S. 404 bears N 32° 03' E, 38.77 feet.

At the East center 1/16 corner of Section 21, I set a 5/8 inch by 30 inch iron pin as shown on Map of Survey, page 1, from which:

A 1 inch outside diameter iron pipe with metal tag marked R. S. 404, bears N 14° 21' 04" E, 83.21 feet, from which:

A 14 inch diameter cedar with single blaze, scribing partly visible, bears N 63° 43' E, 41.40 feet.

A 24 inch diameter cedar with single blaze, healed, bears S 49° 31' E, 21.00 feet.

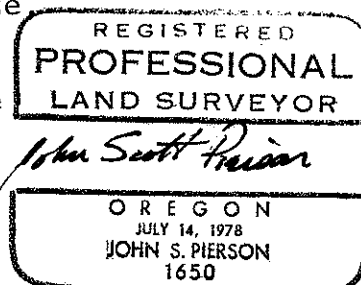
At the Southeast 1/16 corner of Section 21, I set a 5/8 inch by 30 inch iron pin as shown on Map of Survey, page 1, from which:

A 1 inch outside diameter iron pipe bears N 19° 55' 32" E, 71.74 feet, from which:

A 16 inch diameter Douglas fir with double blaze, healed, bears S 63° 58' W, 8.40 feet.

A 22 inch diameter cedar with double blaze healed, bears S 55° 52' E, 42.46 feet.

Note: All trees measured were measured to the side center of the tree.



A 12 inch diameter Douglas fir with open blaze, scribed C  $\frac{1}{4}$ , S 21 RS 404, bears N 57° 50' E, 70.92 feet.

A 9 inch diameter white oak with open blaze, no scribing, bears S 87° 51' E, 65.93 feet.

An 11 inch diameter white oak with single blaze, partly healed, bears S 82° 46' E, 28.90 feet.

An 8 inch diameter white oak with open blaze, no scribing, bears S 34° 07' E, 63.50 feet.

At the North 1/16 corner common to Sections 21 and 22, I set a 5/8 inch by 30 inch iron pin as shown on Map of Survey, page 1, from which:

A 1 inch outside diameter iron pipe bears N 08° 10' 35" E, 97.73 feet, from which:

A 24 inch diameter fir with single blaze, healed, bears S 74° 04' W, 6.50 feet. (Record/ Recorded Survey 1617, N 60° 30' E, 10 links.)

An 18 inch diameter fir stump with blaze, scribing visible, bears N 62° 08' E, 29.40 feet. (Record/ Recorded Survey 1617, S 74° W, 44 links.)

A discrepancy between my measured bearings and record measured bearings to each bearing tree appears to result from a transposition of the record measured bearings of Recorded Survey 1617.

At the South 1/16 corner common to Sections 21 and 22, I set a 5/8 inch by 30 inch iron pin as shown on the Map of Survey, page 1, from which:

A 1 inch outside diameter iron pipe bears N 17° 34' 38" E, 106.20 feet, from which:

A 23 inch diameter black oak with double blaze, partly healed, bears S 32° 07' W, 3.70 feet.

An 11 inch diameter Douglas fir with double blaze, healed, bears N 63° 12' E, 11.70 feet.

At the East 1/16 corner common to Sections 21 and 28, I set a 5/8 inch by 30 inch iron pin as shown on Map of Survey, page 1, from which:

A 1 inch outside diameter iron pipe with metal tag marked R. S. 404 bears N 68° 28' 12" E, 38.28 feet, from which:

A 9 inch diameter white oak with single blaze, healed, bears S 35° 27' E, 32.60 feet.

A 12 inch diameter Douglas fir with single blaze, healed, bears N 00° 45' W, 15.40 feet.

At the West 1/16 corner common to Sections 21 and 28, I set a 5/8 inch by 30 inch iron pin as shown on Map of Survey, page 1.

A 21 inch diameter pine with single blaze bears  
N 27° 13' W, 25.20 feet.

A 21 inch oak with single blaze, scribed, bears  
N 48° 11' E, 25.05 feet.

At the quarter corner common to Sections 21 and 22,  
I set a 5/8 inch by 30 inch iron pin as shown on Map  
of Survey, page 1, from which:

A 1½ inch outside diameter iron pipe with metal tag  
marked R. S. 404, bears N 13° 11' 38" E, 101.22  
feet, from which:

A 7 inch diameter fir, dead and down, with  
double blaze, scribing visible, bears  
S 74° 43' E, 40.60 feet.

A 20 inch diameter fir with single blaze,  
healed, bears S 52° 59' W, 40.38 feet.

At the quarter corner common to Sections 21 and 28,  
I set a 5/8 inch by 30 inch iron pin as shown on  
Map of Survey, from which:

A 1 3/4 inch outside diameter iron pipe with a  
metal tag marked R. S. 404 bears N 65° 17'  
51" E, 27.86 feet, from which:

A 17 inch diameter Douglas fir with single  
blaze healed, bears S 09° 41' W, 36.24 feet.  
(Record/ Recorded Survey 1617 S 09° 30' W,  
14 links.)

A 14 inch diameter Douglas fir with single blaze,  
healed, bears N 65° 33' W, 9.20 feet. (Record/  
Recorded Survey 1617 N 66° W, 56 links.)

A discrepancy between my measured distances and record  
measured distances to each bearing tree appears to  
result from a transposition of the record measured  
distances of Recorded Survey 1617.

At the quarter corner common to Sections 20 and 21,  
I found a 2 inch diameter aluminum cap on an iron  
pipe per Recorded Survey 4250, marked as shown on  
Map of Survey, page 1.

At the center quarter corner of Section 21, I set a  
5/8 inch by 30 inch iron pin as shown on Map of  
Survey, page 1, from which:

A 1 5/8 inch outside diameter iron pipe with metal  
tag marked R. S. 404 bears N 17° 13' 52" E,  
56.78 feet from which:

A 12 inch diameter white oak with double  
blaze, healed, bears S 32° 55' W, 52.00  
feet.

A 14 inch diameter white oak with double  
blaze, healed, bears N 21° 06' W, 65.71 feet.

A 12 inch diameter fir with healed blaze,  
bears N 59° 40' E, 31.50.

A 19 inch diameter fir with healed blaze  
bears S 33° 00' E, 38.60 feet.

A 24 inch diameter fir with healed blaze  
bears S 55° 29' W, 7.20 feet.

A 16 inch diameter fir with healed blaze  
bears N 36° 56' W, 35.80 feet.

At the Section corner common to Sections 15, 16, 21  
and 22, I found a 1 5/8 inch outside diameter  
iron pipe as shown on Map of Survey, page 1, from which:

A 7 inch diameter oak with single blaze  
healed over, bears N 34° 42' W, 17.45 feet.

A 20 inch diameter oak with single blaze rotted  
out bears N 29° 36' E, 25.70 feet.

A 16 inch diameter pine with single blaze, scribed,  
bears N 77° 34' E, 32.90 feet.

A 14 inch diameter pine with single blaze, scribed,  
bears S 54° 55' E, 24.20 feet. " 40 R BT " is  
partly visible on face.

A 5 inch diameter oak with single healed blaze  
bears S 08° 20' W, 22.90 feet.

A 17 inch diameter pine with single healed blaze  
bears S 56° 47' W, 28.03 feet.

At the Section corner common to Sections 21, 22, 27  
and 28, I set a 5/8 inch by 30 inch iron rod as shown  
on Map of Survey, page 1, from which:

A 1 7/8 inch outside diameter iron pipe with metal  
tag marked R. S. 404 bears N 66° 25' E, 47.43  
feet, from which:

An 8 inch diameter oak with double blaze,  
healed, bears N 58° 44' W, 6.5 feet.

A 22 inch diameter Douglas fir with  
double blaze, healed, bears N 61° 40' E,  
57.23 feet.

A 20 inch diameter Douglas fir with double  
blaze, healed, bears S 42° 39' E, 35.36 feet.

A 23 inch diameter Douglas fir snag, with  
double blaze, partially healed and scribing  
partially visible, bears S 29° 41' W, 37.70  
feet.

At the quarter corner common to Sections 21 and 16, I  
found a 1 5/8 inch outside diameter iron pipe as  
shown on Map of Survey, page 1, from which:

An 18 inch diameter fir stump with single blaze,  
scribing visible, bears S 46° 09' W, 28.40 feet.

At the Section corner common to Sections 20, 21, 28 and 29, I found a 2½ inch diameter brass cap set on an iron pipe marked as shown on Map of Survey, page 1, from which:

A lead plug and tack in the Northwesterly intersection of a gunite creek wall and a 24" diameter corrugated metal pipe bears N 34° 37' E, 85.14 feet. (Record/ County Surveyor N 34° 46' E, 85.57 feet)

A concrete nail in the Northwesterly intersection of a gunitied creek wall and a 30 inch diameter corrugated metal pipe bears S 52° 52' E, 128.34 feet. (Record/ County Surveyor S 53° 00' E, 128.46 feet)

A concrete nail in the base of a 6 inch diameter air vent pipe bears S 13° 01' E, 152.95 feet. (Record/ County Surveyor S 12° 55' E, 153.00 feet)

At the Section corner common to Sections 22, 23, 26 and 27, I found a 3½ inch diameter brass cap on an iron pipe marked as shown on the Map of Survey, page 1, North of and alongside said brass cap was found a 2" outside diameter iron pipe with metal tag marked R. S. 404. From the found brass cap:

A 14 inch diameter white fir bears N 39° 16' W, 17.10 feet.

An 8 inch diameter white fir bears N 2° 36' E, 10.00 feet.

A 30 inch diameter Douglas fir stump bears N 87° 40' E, 34.99 feet.

A 30 inch diameter pine stump bears S 77° 36' E, 27.84 feet.

A 20 inch diameter white fir bears S 24° 38' W, 16.60 feet.

At the Section corner common to Sections 27, 28, 33 and 34, I found a 3¼ inch diameter brass cap marked as shown on the Map of Survey, page 1, from which:

A badly decayed 28 inch diameter fir stump with pitch scribe visible bears N 75° 14' E, 4.85 feet.

A 12 inch diameter white fir with healed blaze bears N 74° 26' E, 30.88 feet.

A 13 inch diameter white fir with open blaze bears S 42° 49' E, 24.25 feet.

A 13 inch diameter white fir with open blaze bears S 36° 07' W, 44.45 feet.

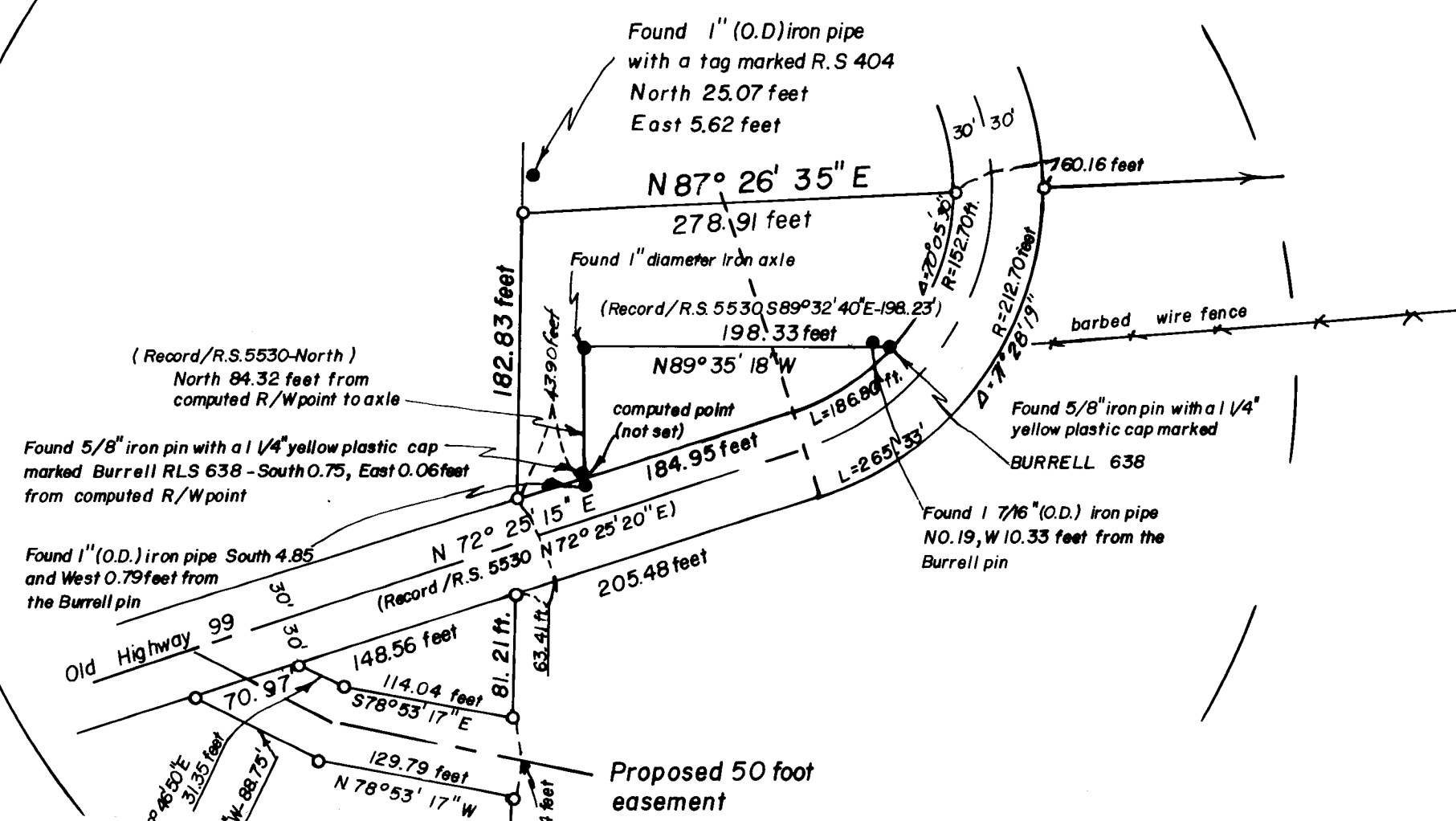
A 12 inch diameter white fir with open blaze bears N 30° 12' W, 38.00 feet.

A 1 7/8 inch outside diameter iron pipe in rock mound as shown on Map of Survey, page 1, bears N 67° 59' W, 119.85 feet from which:

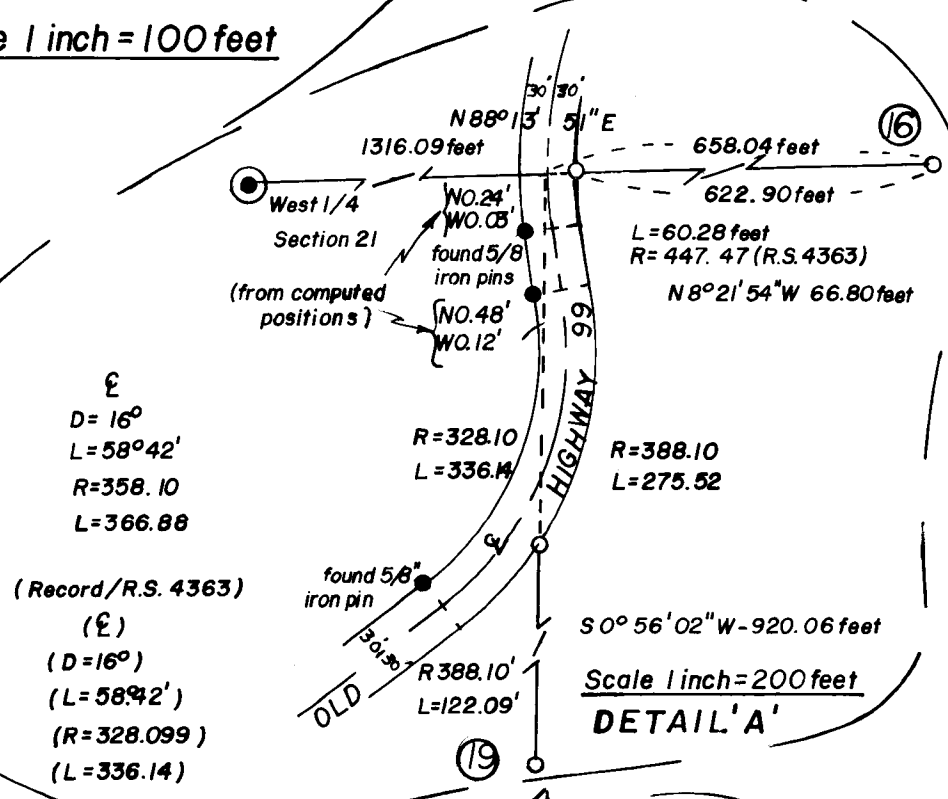




Detail 'B'

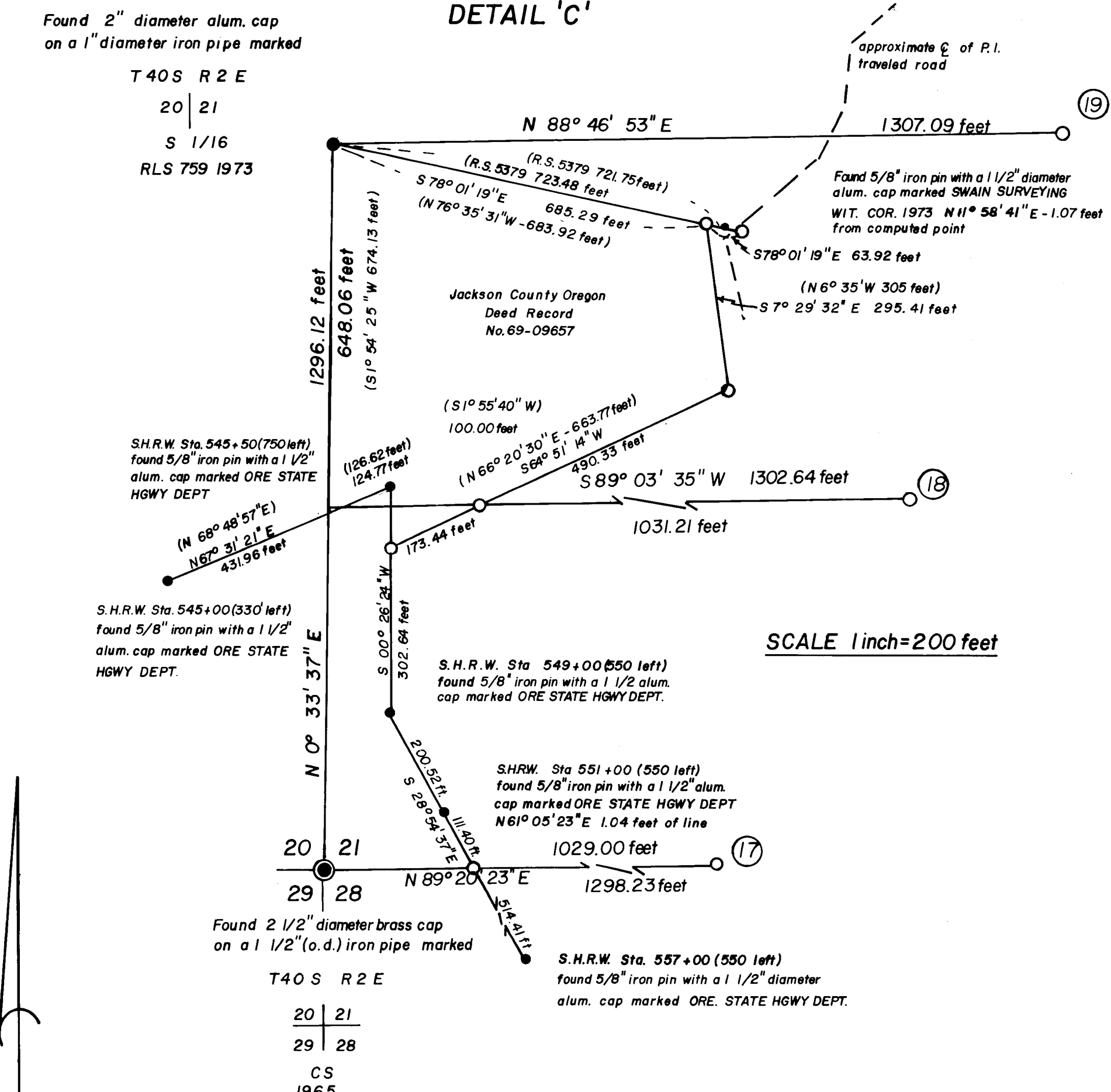


Scale 1 inch = 100 feet



Scale 1 inch = 200 feet

DETAIL 'C'



SCALE 1 inch = 200 feet

LEGEND

- Set 5/8 inch x 30 inch iron reinforcing pin with a yellow 1/4 inch plastic cap marked PIERSON OPLS 1650
- Found monument as shown
- Found monument as shown
- O.D. outside diameter
- ℄ centerline
- ft. feet
- R.S. record survey
- ( ) record
- fence
- (No.) see narrative for corner description (corresponding with the number)

Basis of Bearings  
Record Survey: 5379

REGISTERED  
PROFESSIONAL  
LAND SURVEYOR  
*John Scott Hixon*

RECEIVED  
Date 4/21/82 By SK  
This survey consists of:  
9 sheet(s) Map  
9 page(s) Narrative  
JACKSON COUNTY  
SURVEYOR

Survey located in the NE 1/4, SE 1/4, and SW 1/4 of Section 21, T. 40 S., R. 2 E., W.M., Jackson County, Oregon

APRIL 25, 1982

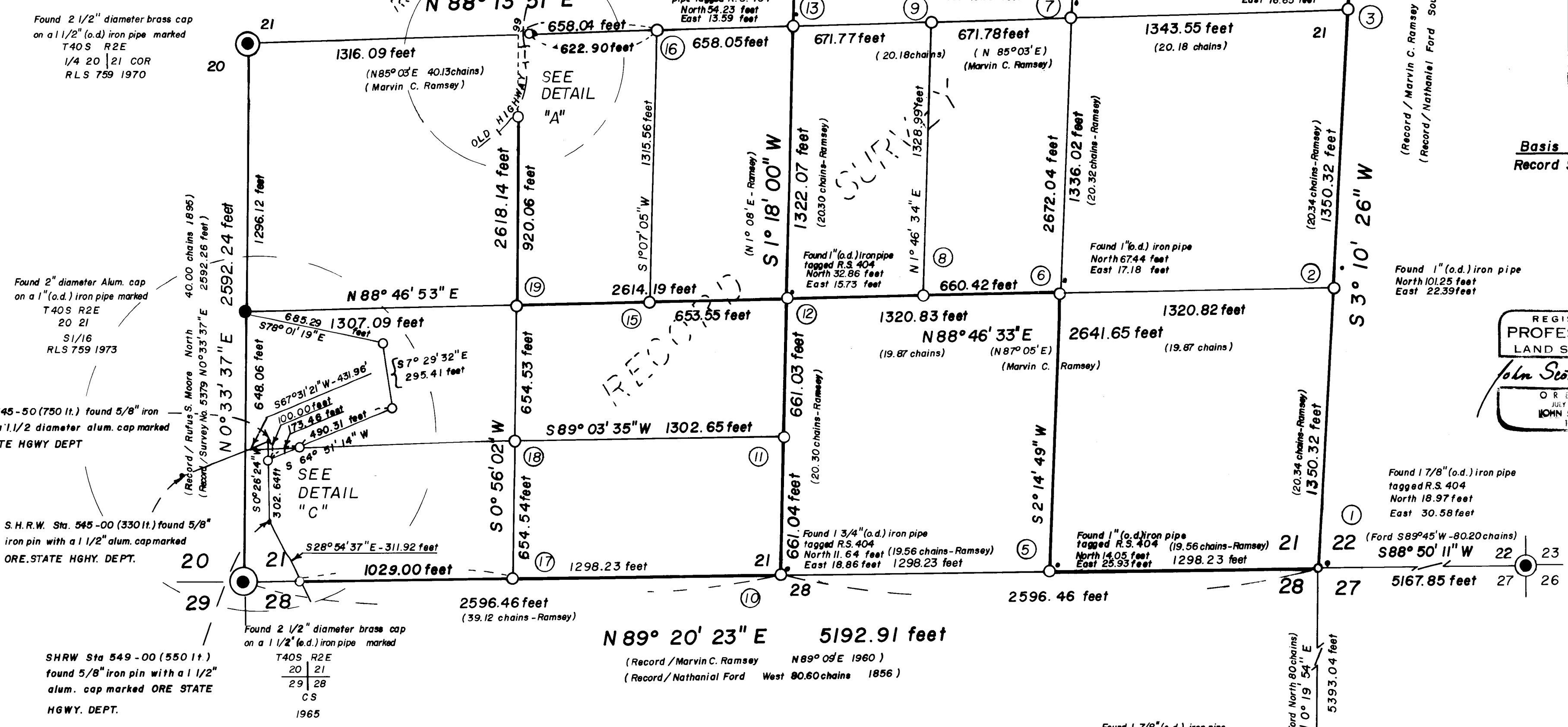
ADMENDED MAP OF SURVEY # 8976 for

**Keltner, Milam and Co. LTD.**  
3000 West Charleston Blvd.  
Suite 3  
Las Vegas, Nevada

**Dennis O. Beatty**  
1140 Old Highway 99 South  
Ashland, Oregon

**Jack R. Cannon**  
4320 Omaha  
Phoenix, Oregon

**Earle L. Hendricks**  
3185 Crownview Drive  
Rancho Palos Verdes, California



SCALE 1 inch = 400 feet

Found 3 1/2" diameter brass cap marked  
US DEPT. OF THE INTERIOR  
T 40 S R 2 E  
22 23  
27 26  
1968  
BUR. LAND MANAGEMENT

Found 3 1/4" diameter brass cap exposed 0.4 feet marked  
US DEPT. OF THE INTERIOR  
28 27  
33 34  
1969  
BUR. LAND MANAGEMENT

