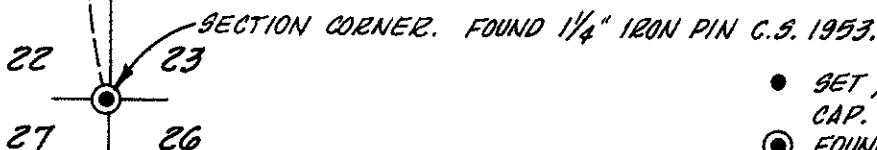
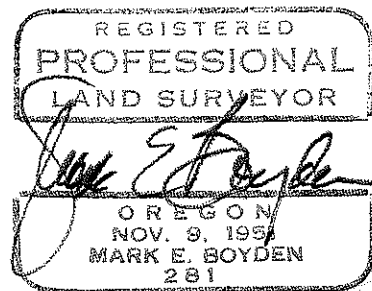
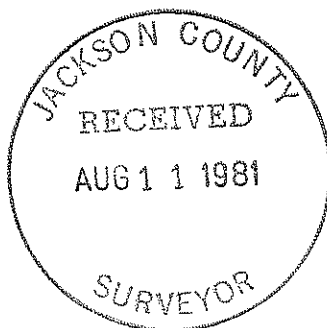
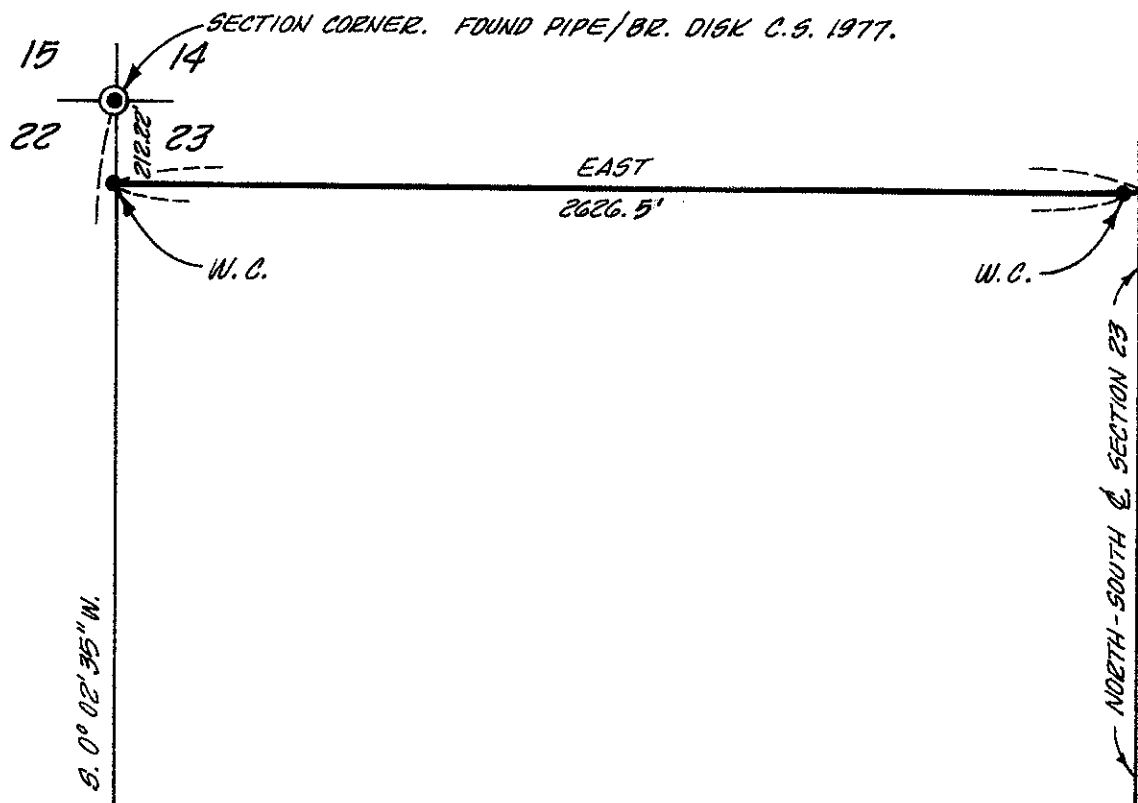


SURVEY FOR:

THE VERNA R. MATTHEWS ESTATE  
LOCATED IN THE NW 1/4 OF SECTION 23,  
T. 35 S., R. 1 W., W.M.

BY: MARK E. BOYDEN  
BOYDEN SURVEYORS  
AUGUST 5, 1981



- SET 5/8" x 30" REBAR WITH PLASTIC CAP.
- ⊙ FOUND COUNTY SURVEYOR. RE-ESTABLISHED CORNER MONUMENT.

W.C. = WITNESS CORNER.

Survey No. 8946

Survey Narrative to Comply with O.R.S. 209.250

For: The Verna R. Matthews Estate  
c/o Carl Brophy  
201 West Main Street  
Medford, Oregon

By: Mark E. Boyden  
Boyden Surveyors  
108 Mistletoe St.  
Medford, OR

**Purpose:** To monument with witness corners the lot line adjustment approved by the County Planning Director on July 8, 1981 (File #81-57-LLA)

**Procedure:** Having recovered the Northwest and Southwest corners of Section 23, T.35 S. R. 1W. as previously monumented by the County Surveyor's Department, set the "adjusted lot line" control monuments as shown on the annexed map. The position of the true "North-South" centerline of Section 23 was not determined on this survey. Meridian was established from a mean of eight solar observations taken approximately 1/4 mile East from the West boundary of said Section 23.

August 5, 1981

