

SURVEY FOR BOISE CASCADE CORP.

P.O. BOX 100 MEDFORD, OREGON

LOCATED IN SECTION 16, T.35S., R.3W., W.M.

JACKSON COUNTY, OREGON

SCALE: 1" = 400'

JULY 15, 1981

LEGEND

- ⊙ SET MONUMENT
- ⊙ FOUND MONUMENT
- B & H BLAZED AND HEALED
- () RECORD DATA



NW CORNER SECTION 16

FOUND - STANDARD BLM 2-1/2" PIPE AND BRASS CAP MARKED:

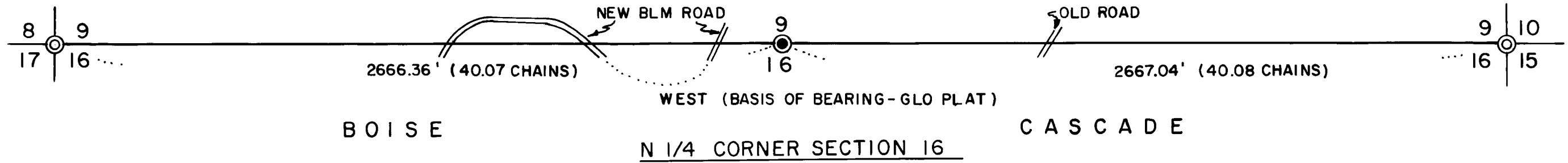
- T35SR3W FROM WHICH BTs FOUND: ORIGINALS
 S8 | S9
 S17 | S16
 1958
- A 15" DEAD & DOWN OAK BEARS N42°17'E, 12.5'
 - A 20" ROTTEN OAK STUMP BEARS S20°16'E, 26.25'
 - A 29" OAK WITH ROTTED FACE BEARS S53°56'W, 9.6'
- BLM BTs:
 A 27" FIR BEARS N42°17'E, 17.7' B & H
 A 25" FIR BEARS S43°05'E 19.9', B & H
 A 16" FIR BEARS S16°13'W, 59.6' B & H
 A 21" FIR BEARS N41°37'W, 34.4' B & H

NE CORNER SECTION 16

FOUND - STANDARD BLM 2-1/2" PIPE AND BRASS CAP MARKED:

- T35SR3W FROM WHICH BTs FOUND: ORIGINALS
 S9 | S10
 S16 | S15
 1971
- A 40" OAK BEARS N8°53'E, 79.5', B & H
 - A 36" PINE BEARS S55°07'W, 18.2', NEW SCRIBING VISIBLE
 - A 40" OAK WITH ROTTED FACE BEARS N42°37'W, 57.0'
- BLM BTs:
 A 20" MADRONE BEARS N11°53'E, 47.7', B & H
 A 10" FIR BEARS N70°55'E, 15.5', B & H
 AN 8" FIR BEARS S 74°49'E, 21.2', B & H
 A 15" FIR BEARS N 12°10'W, 35.4', B & H
 CORNER LIES IN OLD CAT ROAD

U.S.A.



N 1/4 CORNER SECTION 16

- T35SR3W
 1/4 S S9
 S16
 1981
 RPLS 601
- SET - A 2-1/2" x 30" ALUMINUM PIPE WITH 2-1/2" ALUMINUM CAP MARKED:
 (PIPE EXPOSED 8" AND BEARS S20°E, 2.5' FROM A TWIN 7" MADRONE)
- FROM WHICH NEW BTs MARKED:
 A 7" FIR BEARS N28°33'E, 10.3, SCRIBED 'T35SR3W 1/4 S 9 BT'
 AN 8" FIR BEARS S74°03'E, 26.9, SCRIBED 'T35SR3W 1/4 S 16 BT'
 CORNER BEARS EAST 205' FROM LOCATION TAG ON BLM ROAD

REGISTERED PROFESSIONAL LAND SURVEYOR

Malcolm N. Clark

OREGON
JULY 12, 1963
MALCOLM N. CLARK
601

HISTORY OF SURVEYS

- 1) DAVID P. THOMPSON RAN THIS LINE UNDER CONTRACT NO. 70, DATED FEBRUARY 2, 1857.
- 2) NO ORIGINAL EVIDENCE FOUND AT 1/4 S9/S16
- 3) UNRECORDED EVIDENCE, LINE POSTING AND CORNER (APPX) TAG, OF BLM RANDOM SURVEY APPARENT ON THIS LINE.

NOTES

- 1) ALL BTs HAVE BT TAGS. ALL NEW BTs HAVE A 6" PAINTED RED BAND, PAINTED FACES AND A 3/4" BRASS WASHER STAMPED 'R.L.S. 601' SET IN LOWER FACE.
- 2) BASIS OF BEARING IS GLO PLAT OF 1857, LINE COMMON TO SECS. 9 AND 16.
- 3) A WILD T-16 AND DI-4 DISTOMAT E.D.M. WERE USED FOR THIS SURVEY.
- 4) PROPERTY LINES SHOWN ARE MARKED WITH 1-1/2" x 5" ALUMINUM TAGS STAMPED 'P/L BCC'; TREES ADJACENT TO TRUE LINE ON BOISE CASCADE ARE QUARTER BLAZED; TREES ADJACENT TO TRUE LINE ON ADJOINERS ARE SINGLE FACE BLAZED. ALL BLAZES ARE PAINTED RED.

CERTIFICATE

I, MALCOLM N. CLARK, A REGISTERED PROFESSIONAL LAND SURVEYOR IN THE STATE OF OREGON, HEREBY CERTIFY THAT THIS PLAT AND THE NOTES HEREON ARE A CORRECT REPRESENTATION OF A SURVEY I PERFORMED IN JULY, 1981, FOR BOISE CASCADE CORP. IN ACCORDANCE WITH STATE STATUTES AND WITH THE ARTICLES OF MY CONTRACT.

Malcolm N. Clark

MALCOLM N. CLARK
REGISTERED OREGON PLS. NO. 601

CHICKERING - GREEN EMPIRE, INC.
 360 S.E. 'H' STREET SUITE 'B'
 GRANTS PASS, OREGON 97526
 TELEPHONE: 474-2035

JOB NUMBER GBC 8108-1

Survey Number 8913

Survey Narrative, ORS 209.250

Survey for: Boise Cascade Corporation
P. O. Box 100
Medford, Oregon 97501

Survey by: CHICKERING/GREEN EMPIRE, INC.
360 S.E. "H" Street
Grants Pass, Oregon 97526
(Malcolm N. Clark, PLS 601)

Location: Section line common to Sections 9 and 16,
T. 35 S., R 3 W., W.M.

Purpose: To mark property lines of Boise Cascade Corporation
and to set certain property corner.

Equipment: Wild T-16 and Wild DI-4 Distomat EDM

Procedure: Ran a traverse between the Northeast Corner and
the Northwest Corner of Section 16. A careful
search was made for the Quarter Section Corner
Common to said Sections 9 and 16, and, finding no
original evidence, I declared it lost and by
single proportionate measurement, using the GLO
plat as the basis, I determined a position to
reestablish the corner.

I then blazed and painted the Section line. These
lines were also posted using 1-1/2" by 5" alum-
inum tags at intervals less than 300', marked
"B C C P/L".

Date: July 15, 1981. (Sardine Creek)



Malcolm N. Clark

