

SURVEY FOR BOISE CASCADE CORP.

P.O. BOX 100 MEDFORD, OREGON

LOCATED IN SECTION 22, T.38S., R.4E., W.M.

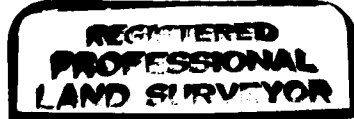
JACKSON COUNTY, OREGON

SCALE: 1" = 500'

JUNE 30, 1981

LEGEND

- ⊙ SET MONUMENT
- ⊙ FOUND MONUMENT
- SUBDIVISIONAL LINE
- SURVEYED, TRUE LINE
- B & H BLAZED AND HEALED
- S.V. SCRIBING VISIBLE
- MKD MARKED
- CS COUNTY SURVEYOR
- () RECORD DATA
- LKS LINKS



Malcolm N. Clark

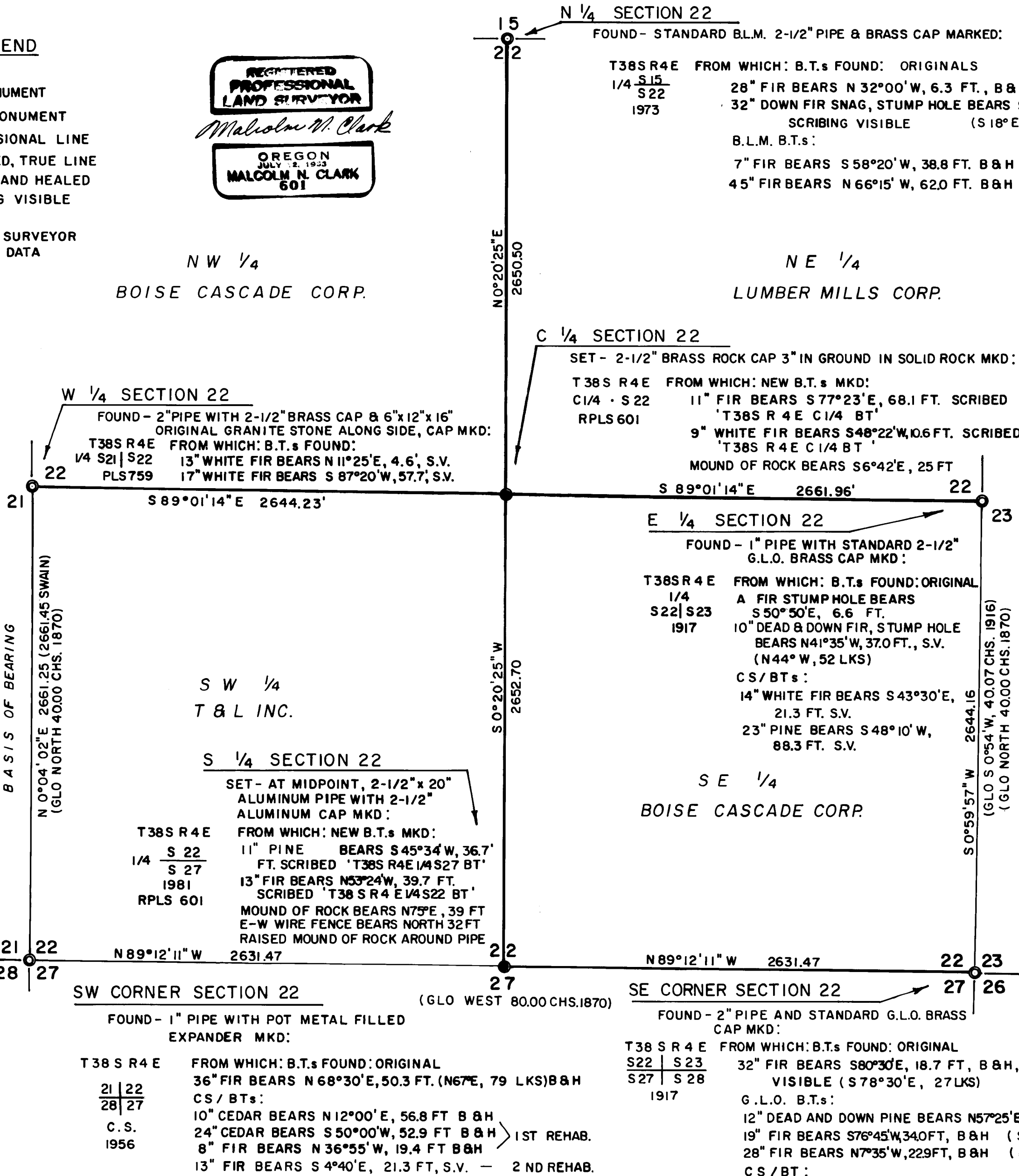
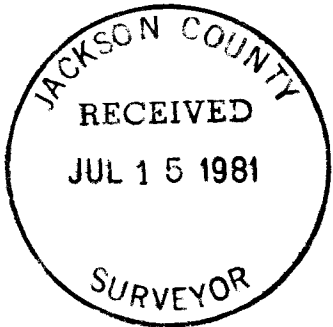


NW 1/4

BOISE CASCADE CORP.

NE 1/4

LUMBER MILLS CORP.



HISTORY OF SURVEYS

- 1) M.L. McCALL SUBDIVIDED T38S, R 4 E, UNDER CONTRACT NO. 137 DATED AUGUST 18, 1870.
- 2) A PARTIAL RETRACEMENT SURVEY WAS MADE BY FRED W. RODOLF, G.L.O., IN 1916, EAST LINE SECTION 22.
- 3) A DEPENDENT RESURVEY BY E.L. SWAIN, O.P.L.S. NO.759 FILED AS CS RECORDED SURVEY NO. 7930 INCLUDED THE NORTH AND WEST LINES OF SECTION 22.
- 4) NO CONCLUSIVE ORIGINAL EVIDENCE WAS FOUND AT THE S 1/4 CORNER SECTION 22 DURING SEARCH. RECORD WAS CHARRD STAKE IN MOUND OF STONE, NO BTs OR B0s MARKED.

NOTES

- 1) ALL BTs HAVE BT TAGS. ALL NEW BTs HAVE A 6" PAINTED RED BAND, PAINTED FACES AND A 3/4" BRASS WASHER STAMPED 'R.L.S. 601' SET IN LOWER FACE.
- 2) BASIS OF BEARING IS RECORDED SURVEY NO. 7930 AS SHOWN ABOVE.
- 3) A WILD T-16 AND DI-4 DISTOMAT E.D.M. WERE USED FOR THIS SURVEY.
- 4) PROPERTY LINES SHOWN ARE MARKED WITH 1-1/2"x5" ALUMINUM TAGS STAMPED 'P/L B C C'; TREES ADJACENT TO TRUE LINE ON BOISE CASCADE ARE QUARTER BLAZED; TREES ADJACENT TO TRUE LINE ON ADJOINERS ARE SINGLE FACE BLAZED. ALL BLAZES ARE PAINTED RED.

CERTIFICATE

I, MALCOLM N. CLARK, A REGISTERED PROFESSIONAL LAND SURVEYOR IN THE STATE OF OREGON, HEREBY CERTIFY THAT THIS PLAT AND THE NOTES HEREON ARE A CORRECT REPRESENTATION OF A SURVEY I PERFORMED IN JUNE, 1981, FOR BOISE CASCADE CORP. IN ACCORDANCE WITH STATE STATUTES AND WITH THE ARTICLES OF MY CONTRACT.

Malcolm N. Clark
MALCOLM N. CLARK
REGISTERED OREGON P.L.S. NO. 601

CHICKERING-GREEN EMPIRE, INC.
360 S.E. 'H' STREET SUITE 'B'
GRANTS PASS, OREGON 97526
TELEPHONE: 474-2035

JOB NUMBER GBC-8108-1

22 38 4 E

Survey Number 8911

Survey Narrative, ORS 209.250

Survey for: Boise Cascade Corporation
P. O. Box 100
Medford, Oregon 97501

Survey by: CHICKERING/GREEN EMPIRE, INC.
360 S.E. "H" Street
Grants Pass, Oregon 97526
(Malcolm N. Clark, RPLS 601)

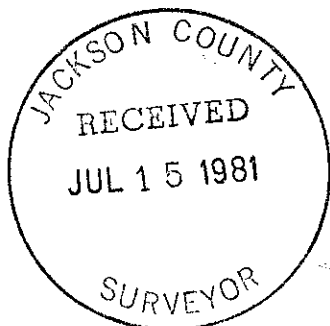
Location: Section 22, T. 38 S., R. 4 E., W.M.

Purpose: To mark property lines of Boise Cascade Corporation and to set certain property corners.

Equipment: Wild T-16 and Wild DI-4 Distomat EDM

Procedure: A closed traverse, starting at the West Quarter Corner was ran clockwise around the South Half of Section 22 to tie all controlling corners necessary to subdivide Section 22. The North Quarter Corner was tied by open ended traverse with procedural traverse checks. The South Quarter Corner was searched for and finding no original evidence, I declared it lost and by single proportionate measurement, using the GLO plat as the basis, I determined a position to reestablish the corner. At the intersection of the E-W and the N-S centerlines of Section 22, I set the Center Quarter Corner per the Manual of Surveying Instruction, 1973 Edition, B.L.M. After subdividing, certain property lines were then blazed and painted. These lines were also posted using 1-1/2" by 5" aluminum tags at intervals less than 300', marked 'B C C P/L'

Date: July 15, 1981 (Dead Indian)



Malcolm N. Clark

