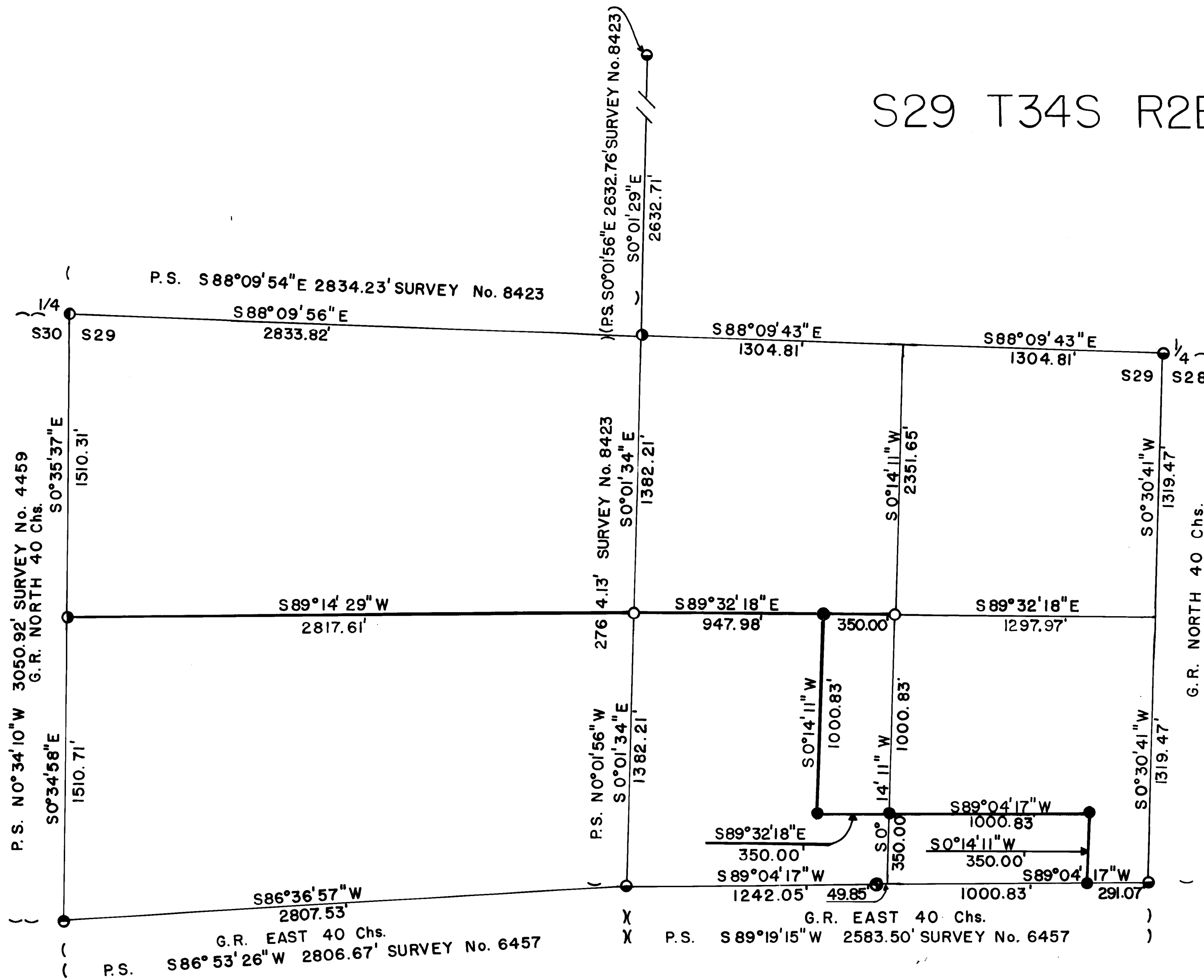


S29 T34S R2E W.M.



CERTIFICATE OF SURVEY

I, ARTHUR R. RAMBO, REGISTRATION NO. 1086 REGISTERED PROFESSIONAL LAND SURVEYOR STATE OF OREGON, HEREBY CERTIFY THAT THIS MAP CORRECTLY REPRESENTS A SURVEY MADE BY ME OR UNDER MY DIRECTION IN CONFORMANCE WITH THE LAWS OF THE STATE OF OREGON.

SURVEY LOCATED IN SOUTH 1/2 S29

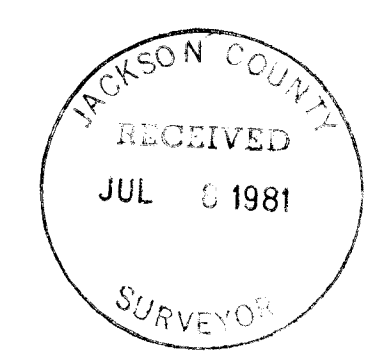
BASIS OF BEARING SURVEY No. 8423

DATE JUNE 19, 1981

G.R. 1856 GOVERNMENT RECORD

P.S. PRIVATE SURVEY

SCALE 1" = 400'



- FOUND STANDARD B.L.M. MONUMENT
- FOUND COUNTY MONUMENT
- FOUND 3/4" REBAR SET SURVEY No. 4459 AND No. 8423
- FOUND 2 1/2" BRASS DISC ON 3/4" REBAR SET SURVEY No. 4459
- FOUND 5/8" REBAR WITH 1 1/2" ALUM. CAP SET SURVEY No. 6457
- SET 5/8" BY 30" REBAR WITH 1 1/2" ALUM. CAP
- SET 5/8" BY 30" REBAR
- PROPERTY LINES POSTED AND BLAZED THIS SURVEY

WITNESS PIN



One-sixteenth corner common to Section 29 and 30, Township 34 South, Range 2 East
At the corner location I found a 3/4 inch dia. rebar exposed 4 inches
from which

A 22 inch dia. fir bears $N41^{\circ}25'W$ 3.60 feet, scribes visible in a partially healed
face

A 20 inch dia. fir bears $N6^{\circ}36'E$ 16.10 feet, scribes visible in a partially healed
face

Center one-quarter corner Section 29, Township 32 South, Range 2 East

At the corner location I found a 3/4 inch dia. pin exposed 4 inches
from which

An 8 inch dia. Oak bears $S70^{\circ}44'E$ 28.3 feet marked: C 1/4 S 29 BT

A 7½ inch dia. Oak bears $N25^{\circ}30'E$ 31.0 feet marked: C 1/4 S 29 BT

Corners set this Survey

Center South one-sixteenth corner Section 29, Township 34 South, Range 2 East

At the corner location I set a 5/8" by 30 inch rebar with a 1½ inch dia. alum. cap
marked:

LS 1086
CS 1/16+ S29
1981
T34S R2E

from which

A 9 inch dia. ash bears $S43^{\circ}23'W$ 26.10 feet, marked CS 1/16 S29 BT

A 16 inch dia. fir bears $N67^{\circ}21'W$ 34.80 feet, marked CS 1/16 S29 BT

South East one-sixteenth corner Section 29, Township 34 South, Range 2 East

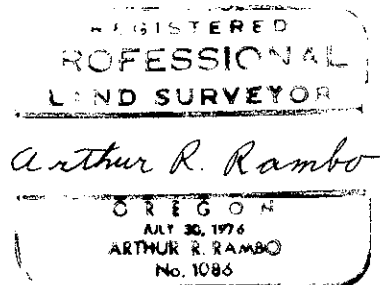
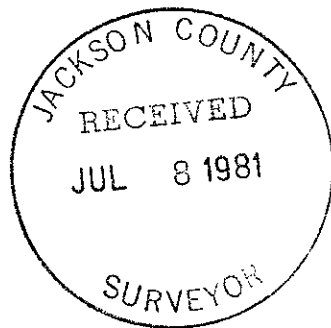
At the corner location I set a 5/8" by 30 inch rebar with a 1½ inch dia. alum. cap
marked:

LS 1086
SE 1/16+S29
1981
T34S R2E

from which

A 10 inch dia. cedar bears $N80^{\circ}18'W$ 10.47 feet marked SE 1/16 S29 BT

A 10 inch dia. cedar bears $N35^{\circ}19'E$ 18.50 feet marked SE 1/16 S29 BT



from which

A 23 inch dia. fir bears N66°09'W 31.86 feet, partially healed chopped out face
 An 18½ inch dia. cedar bears N84°35'E 74.10 feet, B.T. visible in chopped out lower face

One-quarter corner common to Section 28 and 29, Township 34 South, Range 2 East
 At the corner location I found a 2½" dia. Jackson County monument marked

T34S	R2E	1980
29	1	28
¼	1	
	S	
	C	S

from which

An 8 inch dia. oak bears N38°19'W 28.93 feet, healed face
 A 14 inch dia. oak bears S70°35'W 44.75 feet, healed face
 A 12½ inch dia. cedar bears S62°05'W 21.50 feet, healed face

Section corner common to Section 28, 29, 32, and 33, Township 34 South, Range 2 East
 At the corner location I found a 2½ inch dia. Jackson County monument marked

Jackson County		1976
T34S	R2E	
S29	28	
S32	33	

from which

A down and rotted pine bears S49°34'W 52.7 feet to the center of stump hole, scribe on underneath side of tree
 An 8 inch dia. fir bears N78°05'W 52.05 feet, marked BT in lower face
 An 11½ inch oak bears S25°31'W 55.61 feet, unopened
 A 15 inch dia. fir bears S27°23'E 70.87 feet, unopened

East one-sixteenth corner common to Section 29 and 32, Township 34 South, Range 2 East
 At a point S89°11'44"W 49.85 feet from the one-sixteen corner I found a 1½ inch dia. alum. cap, flush with the ground on the North bank of Eagle Point Irrigation District canal, marked

RE	4186	
	WC	
	S29	1
E	—	→
	16	
	S32	
	T34S	R2E

from which

A 7 inch dia. fir bears N75°00'W 11.69 feet, scribe visible in partially healed face
 A 10 inch dia. Madrone bears S5°31'W 28.12 feet marked RE 41 86 BT

One-quarter corner common to Section 29 and 32, Township 32 South, Range 2 East.
 At the corner location I found a 1 inch dia. G.I. pipe exposed 3 inches

from which

A 42½ inch dia. fir bears S46°38'E 21.74 feet, scribes visible in chopped out upper face
 A 9½ inch dia. oak bears N37°46'E 51.47 feet, unopened
 A 42½ inch dia. cedar bears S85°14'W 81.82 feet, unopened

Section corner common to Section 29, 30, 31, and 32, Township 34 South, Range 2 East
 At the corner location I found a standard Bureau of Land Management monument marked

T34S	R2E	
S30	S29	
S31	S32	
1968		

from which

A 41 inch dia. fir bears N30°04'W 7.10 feet chopped open
 A 13 inch dia. fir bears N48°24'W 37.34 feet, unopened
 A 12 inch dia. pine bears 22°34'W 36.45 feet, unopened
 A 13 inch dia. fir bears S23°44'E 57.23 feet, unopened
 A 37 inch dia. cedar bears N34°29'E 13.27 feet chopped open
 A 13 inch dia. fir bears N8°08'E 36.93 feet unopened

Survey Narrative to Comply with
Paragraph 209.250 Oregon Revised Statutes

Survey For: Medford Resources Corporation
P. O. Box 550
Medford, Oregon 97501

Survey By: Arthur R. Rambo LS 1086
331 Bluff Street
Butte Falls, Oregon 97522

Location: South Half of Section 29, Township 34 South, Range 2 East,
Willamette Meridian, Jackson County, Oregon

Basis of Bearing: Survey Number 8423

Purpose: To monument and mark boundary lines of Medford Resources Corp.
lands in Section 29, Township 34 South, Range 2 East. To
monument land to be exchanged between Medford Resources Corp-
oration and Jeff Golden in S 29, T34S, R2E.

Procedure: A search of records revealed that Nathaniel Ford completed the
original survey of this Section under Contract No. 58 dated
April 18, 1855. The original corners needed for control of
this survey have been reestablished by the Bureau of Land Manage-
ment, Cadastral Surveys Division, Jackson County Surveyor, and
Charlie Hurst, private surveyor. The center one-quarter corner
of Section 29 and the South one-sixteenth corner common to
Section 29 and Section 30 have been established by surveys com-
pleted by Charlie Hurst. The East one-sixteenth corner common
to Section 29 and Section 32 has been established by a survey
completed by Lorne Swearingen.

I ran a random line closed traverse survey tying to the corners
needed for control of this survey. The boundary lines needed
were then computed and then established and pins were set as
shown on the plat to accompany this report.

Corners accepted for control

All measurements to bearing trees are to the center of the tree at the stump unless
otherwise noted.

One-quarter corner common to Section 29 and 30, Township 34 South, Range 2 East

At the corner location I found 2½ inch dia. bronze disc, on a ¾ inch dia. rebar,
marked

T34S
R2E WM
½
S 30 . S 29
RS483 1970

from which

A 19½ inch dia. oak bears S75°10'W 15.85 feet both faces chopped out

An 11 inch dia. oak bears N48°09'W 41.08 feet, scribe visible in partially healed
face

An 8 inch dia. oak bears N5°51'E 17.41 feet, scribe visible in partially healed
face

One-quarter corner common to Section 20 and 29, Township 34 South, Range 2 East
At the corner location I found a standard Jackson County 2½ inch dia. brass cap
monument, buried 5 inches beneath the road surface, marked

J.C.
T34S R2E
½ S 20
29
1980