

# RECORD OF SURVEY

IN SECTIONS 17, 18, 19, 20, 21 and 28, T.32 S., R.4 E., W.M.,  
JACKSON COUNTY, OREGON

## FOR ROGUE RIVER NATIONAL FOREST

P.O. BOX 520  
MEDFORD, OREGON  
NORTH BETWEEN CADASTRAL SURVEY

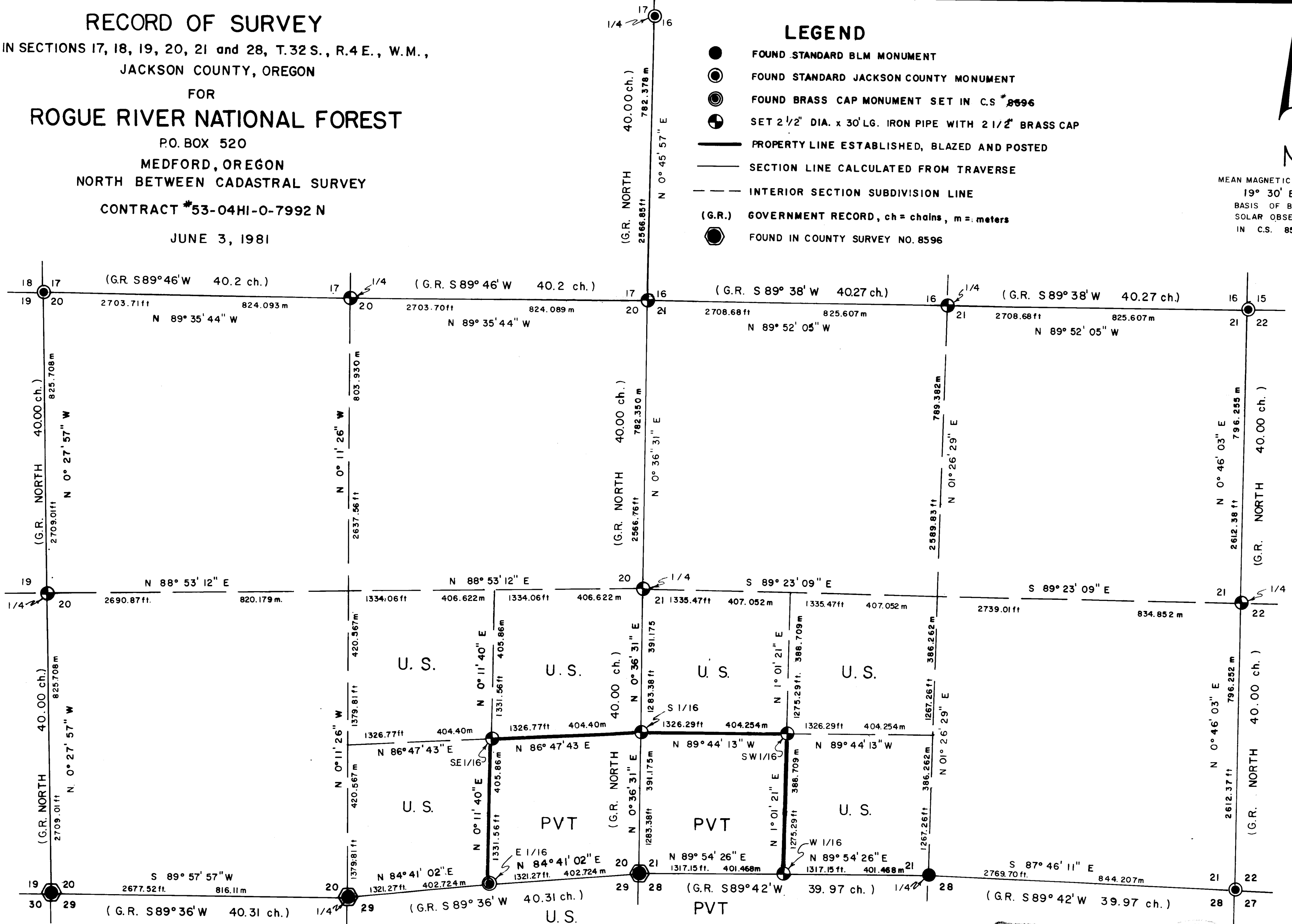
CONTRACT #53-04HI-0-7992 N

JUNE 3, 1981

### LEGEND

- FOUND STANDARD BLM MONUMENT
- ⊙ FOUND STANDARD JACKSON COUNTY MONUMENT
- ⊙ FOUND BRASS CAP MONUMENT SET IN C.S. #8596
- ⊕ SET 2 1/2" DIA. x 30' LG. IRON PIPE WITH 2 1/2" BRASS CAP
- PROPERTY LINE ESTABLISHED, BLAZED AND POSTED
- SECTION LINE CALCULATED FROM TRAVERSE
- - - INTERIOR SECTION SUBDIVISION LINE
- (G.R.) GOVERNMENT RECORD, ch = chains, m = meters
- ⊙ FOUND IN COUNTY SURVEY NO. 8596

MEAN MAGNETIC DECLINATION  
19° 30' EAST  
BASIS OF BEARING -  
SOLAR OBSERVATION  
IN C.S. 8596



METHOD OF SURVEY: THEODOLITE  
AND ELECTRONIC DISTANCE METER

EXAMINED AND ACCEPTED FOR THE  
U.S. FOREST SERVICE THIS 18<sup>th</sup> DAY  
OF JUNE, 1981

*Handwritten signature:* Donald L. Branch  
D.L.B. C.O.R.

SCALE IN FEET  
0 600 1200

SCALE IN METERS  
0 200 400

1 METER = 3.280833 FEET

REGISTERED  
PROFESSIONAL  
LAND SURVEYOR

OREGON  
SEPTEMBER 23, 1977  
DONALD L. BRANCH  
1137

RECEIVED  
JUL 1 1981  
SURVEYOR

From which the following references:

A 10" D.B.H. white fir, tagged, painted, scribed "CW 1/16 S28 B•T"  
bears S 42° W 1.4'.

A 10" D.B.H. douglas fir, tagged, painted, scribed "CW 1/16 S28 B•T"  
bears N 15°20' W 25.5'.

- 13) West 1/16 corner common to Sections 21 and 28, Township 32 South,  
Range 4 East.

At the corner point I set a 2-1/2" diameter iron pipe with a 2-1/2"  
diameter brass cap marked:

T32S R4E  
W1/16  $\frac{S21}{S28}$   
1981  
PLS 1137

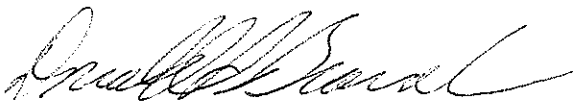
From which the following references:

A 9" D.B.H. white fir, tagged, painted, scribed "W 1/16 S21 B•T"  
bears N 18°50' E 12.2'.

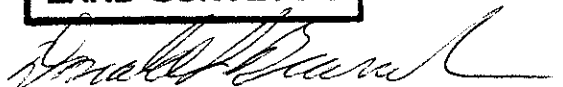
A 12" D.B.H. white fir, tagged, painted, scribed "W 1/16 S28 B•T"  
bears S 66° E 39.5'.

This survey performed utilizing a Jena 020 Theodolite and MAC 1-H  
Electronic Distance Meter.

June 3, 1981



DONALD L. BRANCH  
Registered Professional Land Surveyor  
Oregon Certificate No. 1137



- 9) 1/4 corner common to Sections 27 and 28, Township 32 South, Range 4 East.

At the corner point I set a 2-1/2" diameter iron pipe with a 2-1/2" diameter brass cap marked:

T32S R4E  
1/4  
S28 ↓ S27  
1981  
PLS 1137

From which the following references:

A 14" D.B.H. white fir, tagged, painted, scribed "1/4 S27 B•T"  
bears S 84° E 5.9'.

A 12" D.B.H. white fir, tagged, painted, scribed "1/4 S28 B•T"  
bears S 82° W 5.3'.

- 10) 1/4 corner common to Sections 21 and 22, Township 32 South, Range 4 East.

At the corner point I set a 2-1/2" diameter iron pipe with a 2-1/2" diameter brass cap marked:

T32S R4E  
1/4  
S21 ↓ S22  
1981  
PLS 1137

From which the following references:

A 12" D.B.H. white fir, tagged, painted, scribed "1/4 S21 B•T"  
bears S 84°25' W 26.5'.

A 12" D.B.H. white fir, tagged, painted, scribed "1/4 S22 B•T"  
bears N 01°34' E 21.2'.

- 11) 1/4 corner common to Sections 19 and 20, Township 32 South, Range 4 East.

At the corner point I set a 2-1/2" diameter iron pipe with a 2-1/2" diameter brass cap marked:

T32S R4E  
1/4  
S19 ↓ S20  
1981  
PLS 1137

From which the following references:

A 19" D.B.H. white fir, tagged, painted, scribed "1/4 S20 B•T"  
bears S 76°10' E 14.5'.

A 16" D.B.H. white fir, tagged, painted, scribed "1/4 S19 B•T"  
bears S 09°45' W 21.3'.

- 12) Center West 1/16 corner in Section 28, Township 32 South, Range 4 East.

At the corner point I set a 2-1/2" diameter iron pipe with a 2-1/2" diameter brass cap marked:

T32S R4E  
W1/16  
C —•— C  
S28  
1981  
PLS 1137

From which the following references:

A 13" D.B.H. hemlock, tagged, painted, scribed "1/4 S19 B•T" bears  
 S 03°38' W 60.2'.

A 6" D.B.H. white fir, tagged, painted, scribed "1/4 S18 B•T" bears  
 N 82°33' E 9.5'.

Deposited original stone alongside brass cap.

- 6) South 1/16 corner common to Sections 20 and 21, Township 32 South,  
 Range 4 East.

At the corner point I set a 2-1/2" diameter iron pipe with a 2-1/2"  
 diameter brass cap marked:

T32S R4E  
 S 1/16  
 S 20 ↓ S 21  
 1981  
 PLS 1137

From which the following references:

An 11" D.B.H. white fir, tagged, painted, scribed "S 1/16 S20 B•T"  
 bears N 75°30' W 22.4'.

An 8" D.B.H. white fir, tagged, painted, scribed "S1/16 S21 B•T"  
 bears S 82° E 8.2'.

- 7) 1/4 corner common to Sections 16 and 21, Township 32 South, Range 4 East.

At the corner point I set a 2-1/2" diameter iron pipe with a 2-1/2"  
 diameter brass cap marked:

T32S R4E  
 1/4  $\frac{S16}{S21}$   
 1981  
 PLS 1137

From which the following references:

A 13" D.B.H. white fir, tagged, painted, scribed "1/4 S16 B•T"  
 bears N 30°25' E 18.9'.

An 11" D.B.H. white fir, tagged, painted, scribed "1/4 S21 B•T"  
 bears S 21° W 17.9'.

- 8) 1/4 corner common to Sections 20 and 21, Township 32 South, Range 4 East.

At the corner point I set a 2-1/2" diameter iron pipe with a 2-1/2"  
 brass cap marked:

T32S R4E  
 1/4  
 S20 ↓ S21  
 1981  
 PLS 1137

From which the following references:

A 20" D.B.H. white fir, tagged, painted, scribed "1/4 S20 B•T"  
 bears S 72°15' W 23.85'.

A 21" D.B.H. white fir, tagged, painted, scribed "1/4 S21 B•T"  
 bears N 02°25' E 9.53'.

- 2) 1/4 corner common to Sections 17 and 20, Township 32 South, Range 4 East.

At the corner point I set a 2-1/2" diameter galvanized iron post with a 2-1/2" diameter brass cap marked:

T32S R4E  
 1/4  $\frac{S17}{S20}$   
 1981  
 PLS 1137

From which the following references:

A 9" D.B.H. douglas fir, tagged, painted, scribed "1/4 S17 B.T" bears N 37°26' W 32.3'.

A 16" D.B.H. white fir, tagged, painted, scribed "1/4 S17 B.T" bears N 89°27' E 41.7'.

- 3) Southwest 1/16 corner in Section 21, Township 32 South, Range 4 East.

At the corner point I set a 2-1/2" diameter galvanized iron post with a 2-1/2" diameter brass cap marked:

T32S R4E  
 SW1/16 S21  
 1981  
 PLS 1137

From which the following references:

An 8" D.B.H. hemlock, tagged, painted, scribed "SW 1/16 S21 B.T" bears N 6° E 21.2'.

A 16" D.B.H. white fir, tagged, painted, scribed "SW 1/16 S21 B.T" bears N 85°45' E 22.2'.

- 4) Southeast 1/16 corner in Section 20, Township 32 South, Range 4 East.

At the corner point I set a 2-1/2" diameter galvanized iron post with a 2-1/2" diameter brass cap marked:

T32S R4E  
 SE1/16 S20  
 1981  
 PLS 1137

From which the following references:

An 8" D.B.H. white fir, tagged, painted, scribed "SE 1/16 S20 B.T" bears S 42°30' E 7.1'.

A 7" D.B.H. white fir, tagged, painted, scribed "SE 1/16 S20 B.T" bears S 43°30' W 29.0'.

- 5) 1/4 corner common to Sections 18 and 19, Township 32 South, Range 4 East.

At the corner point I set, from original evidence, a 2-1/2" diameter iron pipe with a 2-1/2" diameter brass cap marked:

T32S R4E  
 1/4  $\frac{S18}{S19}$   
 1981  
 PLS 1137

T32S	R4E
S28	S27
S33	S34

C.S.  
1979

From which the following references:

A 15" D.B.H. oak, painted, tagged, and visible scribed "S" and partial "R" bears N 13°17' E 10.2'.

An 11" D.B.H. white fir, tagged and scribed "CS BT", bears N 34°43' E 85.0'.

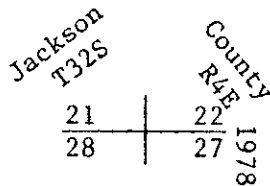
An 8" D.B.H. white fir, scribed "CS BT", bears S 43°40' E 42.9'.

A 13" D.B.H. white fir, with healed blazes bears S 35°17' W 31.4'.

A 14" D.B.H. oak, tagged and painted, bears N 89°20' W 35.0'.

- 8) Section corner common to Sections 21, 22, 28 and 27, Township 32 South, Range 4 East.

At the corner point I found a standard Jackson County 2-1/2" bronze cap on a 1" I.D. iron pipe in mound of red painted stones marked:



From which the following references:

A 31" D.B.H. white fir bears S 55°45' W 13.7' with visible scribe marks "CS" on upper blaze and "BT" on lower blaze.

A 25" D.B.H. white fir bears N 79°20' W 38.1' with visible scribe marks "CS" on upper blaze and "BT" on lower blaze.

A 28" D.B.H. douglas fir bears N 44°28' E 6.8' with visible scribe marks "CS" on upper blaze and "BT" on lower blaze.

A 15" D.B.H. white fir bears S 6°45' E 55.0' with visible scribe marks "CS" on upper blaze and "BT" on lower blaze.

CORNERS ESTABLISHED BY THIS SURVEY

- 1) Section corner common to Sections 16, 17, 20 and 21, Township 32 South, Range 4 East.

At the corner point I set a 2-1/2" diameter galvanized iron post with a 2-1/2" diameter brass cap marked:

T32S	R4E
S17	S16
S20	S21

1981  
PLS 1137

From which the following references:

A 9" D.B.H. white fir, tagged, painted, scribed "T32S R4E S20 B.T" bears S 58°25' W 14.0'.

A 9" D.B.H. douglas fir, tagged, painted, scribed "T32S R4E S17 B.T" bears N 30°24' W 11.1'.

A 14" D.B.H. douglas fir, tagged, painted, scribed "T32S R4E S16 B.T" bears N 72°55' E 54.7'.

A 14" D.B.H. douglas fir, tagged, painted, scribed "T32S R4E S21 B.T" bears S 10°55' E 5.5'.

From which the following references:

- A 24" D.B.H. white fir with healed blaze and "T" scribed on bark, bears S 35°57' E 30.4'.
- A 23" D.B.H. white fir, tagged and scribed "1/4 S28 BT", bears S 4°22' E 53.3'.
- Root hole of 5" D.B.H. fallen chinquapin, tagged and scribed "1/4 S", bears N 8°13' E 8.1'.
- A 10" D.B.H. dead tree (fir?), tagged and scribed "1/4 S21 BT", bears N 17°28' E 48.5'.
- A 25" D.B.H. white fir, tagged and with healed blazes bears N 41°18' E 27.7'.

- 5) 1/4 corner common to Sections 17 and 16, Township 32 South, Range 4 East.

At the corner point I found a standard Jackson County 2-1/2" diameter brass cap on a 1" iron pipe. Found stone vaguely scribed "1/4" on South side of brass cap. Brass cap marked:

Jackson County 1978  
 T32S R4E  
 17 | 16  
 1/4S

From which the following references:

- A 27" D.B.H. cedar, blaze rotted out, bears S 30°26' W 38.15'.
- A 22" D.B.H. sugar pine, scribed "CS BT", bears S 86°41' W 16.67'.
- An 18" D.B.H. douglas fir, scribed "CS BT", bears N 62°26' E 8.7'.

- 6) Section corner common to Sections 15, 16, 21 and 22, Township 32 South, Range 4 East.

At the corner point I found a standard 2-1/2" diameter Jackson County brass cap on a 1" iron pipe marked incorrectly:

Jackson County 1978  
 T32R S4E  
 15 | 16  
 21 | 22

From which the following references:

- A 16" D.B.H. fir snag, scribed "R4E S22", bears S 66°58' E 33.7'.
- A 14" D.B.H. hemlock, tagged, painted and scribed "CS BT", bears S 37°03' E 35.9'.
- A 17" D.B.H. hemlock, tagged, painted and scribed "CS BT", bears S 11°57' W 36.95'.
- A 13" D.B.H. hemlock, tagged, painted and scribed "CS BT", bears N 29°43' W 58.35'.
- A 24" D.B.H. white fir, tagged, painted and scribed "CS BT", bears N 26°37' E 77.0'.

- 7) Section corner common to Sections 27, 28, 33 and 34, Township 32 South, Range 4 East.

At the corner point I found a Jackson County 2-1/2" diameter brass cap set on a 2-1/2" diameter iron pipe surrounded by a mound of 12"-18" stones painted red marked:

CORNERS ACCEPTED FOR CONTROL

- 1) Corners found and/or set in County Survey No. 8596.
- 2) Section corner common to Sections 18 and 19, Township 32 South, Range 4 East, and Sections 13 and 24, Township 32 South, Range 3 East.

At the corner point I found a standard B.L.M. monument marked:

T 32 S	
R3E	R4E
S13	S18
S24	S19
1962	

From which the following references:

A 22" D.B.H. douglas fir, tagged, painted and with healed blaze, bears N 6°19' W 32.5'.

A 17" D.B.H. hemlock, tagged, painted and with some lines visible in partially healed blaze, bears N 56°26' E 10.6'.

A 10" D.B.H. hemlock, painted and with healed blaze, bears S 20°44' E 18.7'.

A 12" D.B.H. hemlock, tagged, painted and with visible scribing "R4ES" in partially healed blaze, bears S 21°49' E 33.5'.

A 6" D.B.H. hemlock, tagged, painted and scribed "T32S R3E S24 BT", bears S 8°26' W 26.8'.

A 10" D.B.H. hemlock, tagged, painted and visibly scribed "BT", bears S 11°31' W 31.3'.

A 21" hemlock snag, tagged, painted and scribed "T32S R3E S24 BT", bears S 59° W 6.5'.

- 3) Section corner common to Sections 17, 18, 19 and 20, Township 32 South, Range 4 East.

Found Jackson County brass cap on 1" diameter iron pipe with original stone marked with three scribed lines along side brass cap marked:

Jackson County 1978	
T32S	R4E
18	17
19	20

From which the following references:

A 13" D.B.H. douglas fir, tagged, painted and scribed "CS BT", bears S 38°58' W 7.66'.

A 19" D.B.H. douglas fir, tagged, painted and scribed "CS BT", bears N 30°07' W 25.85'.

A 10" D.B.H. white fir, tagged, painted and scribed "CS BT", bears N 44°43' E 27.33'.

A 22" D.B.H. douglas fir, tagged, painted and scribed "CS BT", bears N 41°42' E 13.56'.

- 4) 1/4 corner common to Sections 21 and 28, Township 32 South, Range 4 East.

At the corner point I found a standard B.L.M. monument marked:

T32S	R4E
1/4	S21
	S28
1966	



SURVEY NARRATIVE TO COMPLY WITH  
 PARAGRAPH 209.250 OREGON REVISED STATUTES

SURVEY FOR: Rogue River National Forest  
 P. O. Box 520  
 Medford, Oregon 97501

LOCATION: Sections 17, 19, 20, 21 and 28, Township 32 South, Range  
 4 East, Willamette Meridian, Jackson County, Oregon

CONTRACT NO: 53-04H1-0-7992 N

BASIS OF BEARING: Solar Observation in County Survey No. 8596

EQUIPMENT: Theodolite and Electronic Distance Meter

PURPOSE: To establish property corners and mark and post mutual  
 property lines separating National Forest and private  
 lands.

PROCEDURE: Prior to commencement of this survey an investigation of  
 controlling corners, existing surveys, deeds and contact  
 with Boise Cascade was made. Monuments found in County  
 Survey No. 8596 were used for control on the North and  
 East lines of Section 29 and part of the South line of  
 Section 28. The following corners recovered and re-  
 monumented by Jackson County in 1978 and 1979 were  
 also used as control:

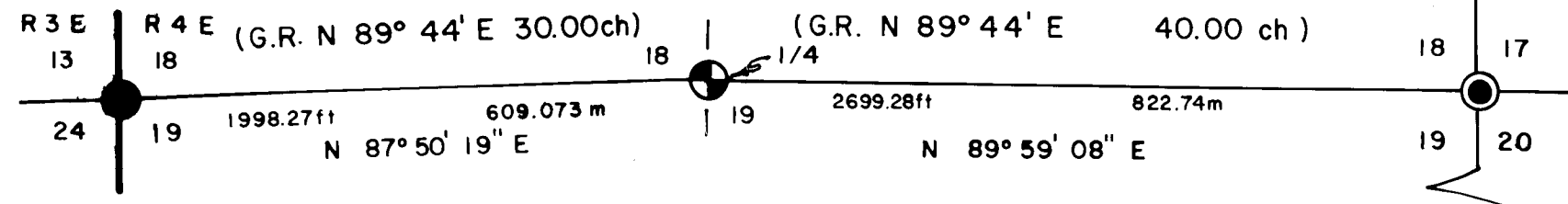
- 1) Section corner common to Sections 17, 18, 19, 20
- 2) Section corner common to Sections 15, 16, 21, 22
- 3) Section corner common to Sections 21, 22, 28, 27
- 4) Section corner common to Sections 27, 28, 33, 34
- 5) 1/4 corner common to Sections 16 and 17

Also used as control were corners recovered and re-  
 monumented by B.L.M. as follows: 1) the section corner  
 common to Sections 13 and 24 in T.32S., R.3E. and  
 Sections 18 and 19 in T.32S., R.4E.; 2) the 1/4 corner  
 common to Sections 21 and 28; and 3) 1/4 corner common  
 to Sections 28 and 33.

With the above corner control verified, I began a series  
 of closed traverses through each found controlling  
 monument. From this data, positions of original  
 corners not found were computed and search areas located.  
 Extensive search for lost corners was performed with the  
 assistance of the surveyors with the U.S. Forest Service,  
 Medford office.

The original stone marked plainly "1/4" for the 1/4  
 corner between Sections 18 and 19 was found in a logging  
 skid road. The stone had obviously been disturbed since  
 marks on the stone were not on the North side of the  
 stone as per original notes and no bearing trees or root  
 holes exist as per original notes. A root hole for  
 the Northeast bearing tree was found 4.8 feet out of  
 position based on the found stone location. No other  
 evidence of the original B.T.'s exists. Therefore,  
 the found root hole and original notes were used to  
 establish the corner for monumentation.

The areas where the missing corners are located has been  
 in at least one forest fire and has been subject to  
 extensive logging operations. I therefore, established  
 lost corners by proportionate measurement and marked  
 lines as shown on the attached map of survey.



**CERTIFICATE OF SURVEY**

"I, DONALD L. BRANCH, A REGISTERED LAND SURVEYOR IN THE STATE OF OREGON, HEREBY CERTIFY THAT THIS PLAT AND THE NOTES HEREON, OR ATTACHED, ARE A CORRECT REPRESENTATION OF A SURVEY I PERFORMED DURING OCTOBER 1980 THRU JUNE 1981 FOR THE U.S. FOREST SERVICE, IN ACCORDANCE WITH THE STATUTES OF THE STATE OF OREGON AND WITH THE ARTICLES OF MY CONTRACT."

DONALD L. BRANCH  
REGISTERED LAND SURVEYOR  
OREGON LICENSE No. 1137

**HISTORY OF SURVEYS**

THE EAST AND NORTH EXTERIOR OF TOWNSHIP 32 SOUTH, RANGE 3 EAST, W.M. WAS SURVEYED BY RUFUS S. MOORE UNDER CONTRACT NO. 496 DATED MARCH 3, 1884.

THE EAST AND NORTH TOWNSHIP LINES AND THE SUB-DIVISION OF TOWNSHIP 32 SOUTH, RANGE 4 EAST, W.M. WAS SURVEYED BY RUFUS S. MOORE UNDER CONTRACT NO. 504 DATED MAY, 1884.

COUNTY SURVEY NO. 8596, BY DONALD L. BRANCH, P.L.S., DATED OCT., 1980, WAS USED TO ESTABLISH THE NORTH AND EAST LINES OF SECTION 29 AND PART OF THE SOUTH LINE OF SECTION 28, T.32 S., R.4 E., W.M.

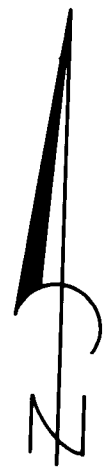
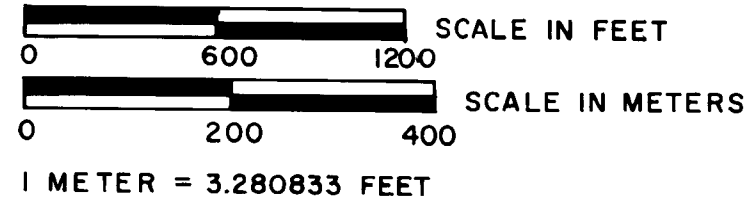
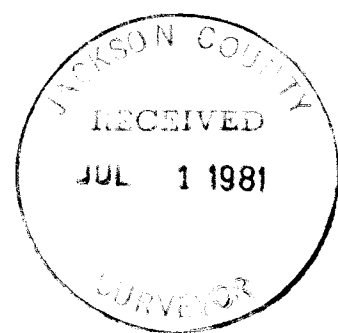
B.L.M. RECOVERED THE CORNER COMMON TO SECTIONS 13 AND 24 IN T.32 S., R.4 E., AND SECTIONS 18 AND 19 IN T.32 S., R.4 E. IN 1962.

IN 1978 AND 1979 JACKSON COUNTY RECOVERED THE FOLLOWING CORNERS IN T.32 S., R.4 E., W.M.:

18   17	16   15	21   22	28   27
19   20	21   22	28   27	33   34

B.L.M. RECOVERED THE NORTH AND SOUTH 1/4 CORNERS OF SECTION 28, T.32 S., R.4 E., W.M. IN 1966 AND OTHER CORNERS NOTED IN COUNTY SURVEY NO. 8596.

REGISTERED PROFESSIONAL LAND SURVEYOR  
*Donald L. Branch*  
OREGON SEPTEMBER 23, 1977  
DONALD L. BRANCH  
1137



U. S.

