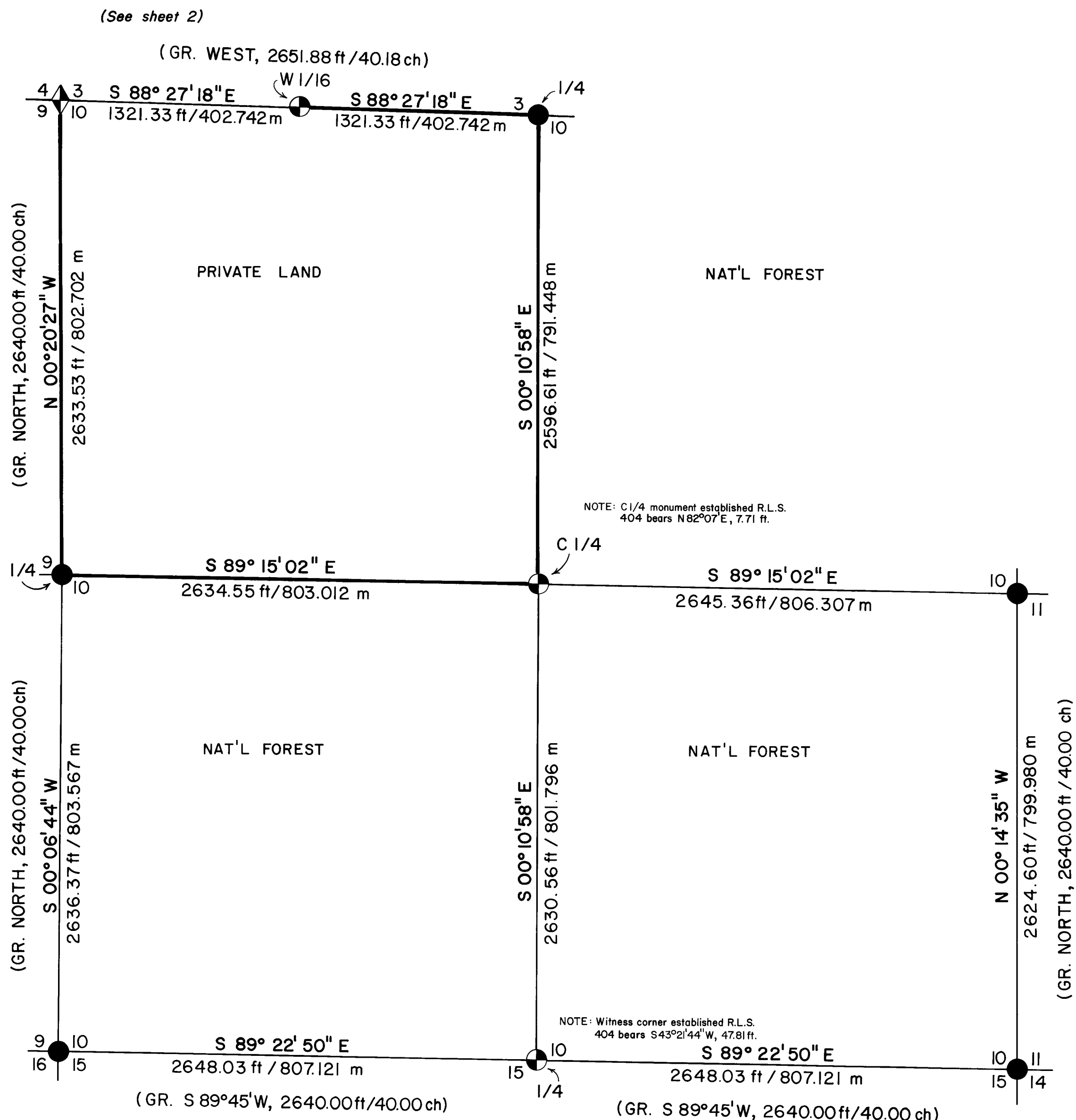
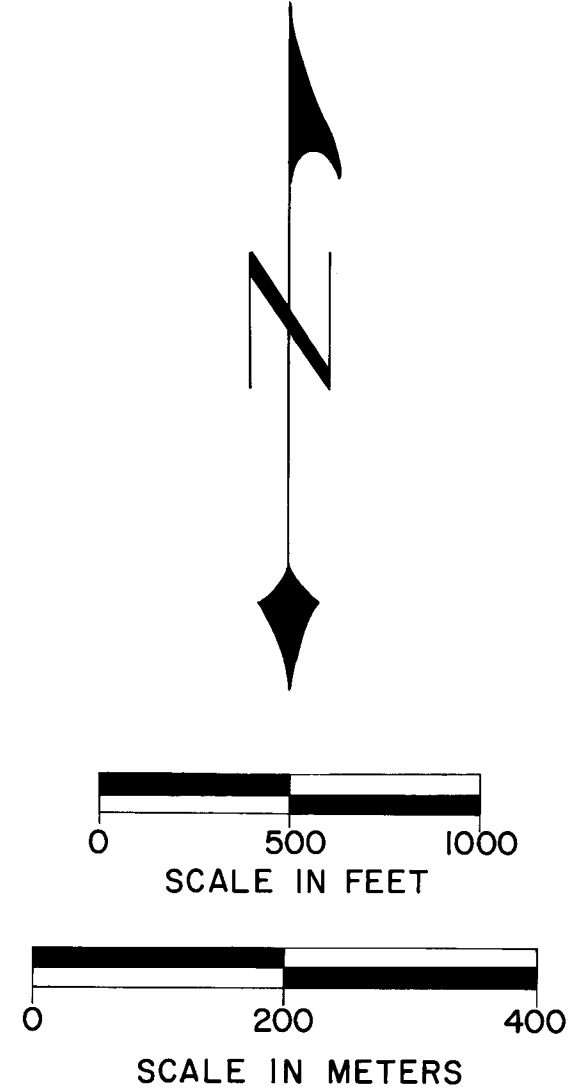


MAP OF SURVEY
FOR
ROGUE RIVER NATIONAL FOREST
P.O. BOX 520
MEDFORD, OREGON
MAY 20, 1981



HISTORY OF SURVEYS

THE ORIGINAL CORNERS FOR SECTIONS 3, 4, AND 10, WERE ESTABLISHED BY WM. M. TURNER, U.S. DEPUTY SURVEYOR UNDER CONTRACT NO. 455, DATED JULY 17, 1882. THE BUREAU OF LAND MANAGEMENT CADASTRAL SURVEYS DIVISION AND JACKSON COUNTY SURVEYOR REMONUMENTED ORIGINAL CORNER POINTS FROM FOUND ORIGINAL EVIDENCE. SECTIONS 3, 4, AND 10 WERE RETRACED AND SUBDIVIDED BY REGISTERED PROFESSIONAL LAND SURVEYOR NO. 404, MARVIN C. RAMSEY. SURVEYOR RAMSEY REMONUMENTED SEVERAL ORIGINAL CORNER POINTS DURING HIS SURVEY AND ESTABLISH CERTAIN OTHER CORNER POINTS. (REFERENCE - JACKSON COUNTY SURVEYOR RECORDS FILE, SURVEY NO. 1527) NO OTHER SURVEYS OF RECORD WERE RECOVERED.



LEGEND

- FOUND STANDARD BLM OR COUNTY SURVEYOR MONUMENT
- SET 2 1/2" DIA GALVANIZED IRON POST WITH 2 1/2" DIA BRASS CAP
- ◆ CEMENTED 2 1/2" DIA BRASS DISC IN TOP OF MONUMENT SET BY R.L.S. 404
- PROPERTY LINE ESTABLISHED AND POSTED THIS SURVEY
- SECTION LINE CALCULATED FROM TRAVERSE SURVEY

CERTIFICATE OF SURVEY

I, HAROLD L. CENTER, REGISTRATION NO. 1071, REGISTERED PROFESSIONAL LAND SURVEYOR, STATE OF OREGON, HEREBY CERTIFY THAT THIS MAP CORRECTLY REPRESENTS A SURVEY MADE BY ME OR UNDER MY DIRECTION, IN CONFORMANCE WITH THE LAWS OF THE STATE OF OREGON, AT THE REQUEST OF THE U.S. FOREST SERVICE.

REGISTERED PROFESSIONAL LAND SURVEYOR
Harold L. Center
OREGON
HAROLD L. CENTER
JULY 30, 1976
No. 1071

JUN 2 1981

U.S. DEPT. OF AGRICULTURE FOREST SERVICE REGION 6 ROGUE RIVER NAT'L FOREST	
DEPENDENT RESURVEY AND SECTION SUBDIVISION SEC. 10, T.37S., R.3E., W.M. JACKSON COUNTY, OREGON	
REVIEWED BY <i>D. McDonald</i>	DATE <i>6/2/81</i>
REVIEWED BY <i>R.J. Hathaway</i>	DATE <i>6/2/81</i>

T37S R3E
C 1/4 S4
1981
LS 1071

From which the following references:

A 14-inch diameter cedar bears S 29° 34' E 39.50 feet distance, scribed
C 1/4 S 4 LS 1071 BT.

A 12-inch diameter fir bears N 18° 06' W 46.30 feet distance, scribed
C 1/4 S 4 LS 1071 BT.

A 1½-inch diameter galvanized iron post as established by RS 404 bears
N 18° 01' 49" W 2.44 feet distance.

Trees marked by Ramsey:

A 11-inch diameter fir bears N 06° 45' E 32.30 feet distance, healed
blaze.

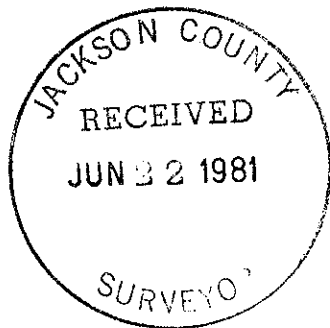
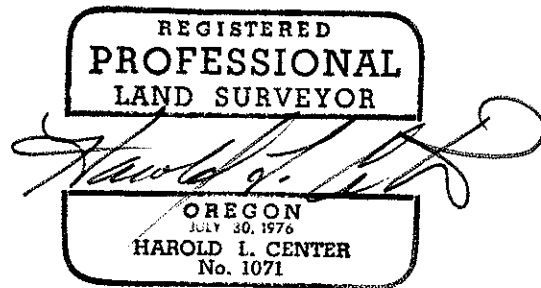
A 12-inch diameter fir bears S 71° 27' E 13.70 feet distance, healed
blaze.

A 8-inch diameter fir bears S 43° 27' W 5.80 feet distance, healed
blaze. This tree dead and down.

A 18-inch diameter fir bears N 66° 53' W 22.60 feet distance, healed
blaze.

May 20, 1981

HAROLD L. CENTER
Registered Professional Land Surveyor
Oregon Certificate No. 1071



T37S R3E
W 1/16
C—C
S3
1981
LS 1071

From which the following references.

A 13-inch diameter cedar bears S 58° 42' W 52.75 feet distance, scribed CW 1/16 S3 LS 1071 BT.

A 12-inch diameter fir bears N 52° 33' E 41.34 feet distance, scribed CW 1/16 S3 LS 1071 BT.

NOTE: A 3/4-inch diameter galvanized iron post as established by RS 404 Marvin C. Ramsey bears S 43° 50' 19" W 3.15 feet distance.

Trees marked by Ramsey:

A 26-inch diameter fir bears N 03° 52' W 39.26 feet distance, healed blaze.

A 11-inch diameter cedar bears S 20° 44' W 23.18 feet distance, scribe visible.

Center east one-sixteenth corner Section 4, Township 37 South, Range 3 East.

At the corner point I set a 2½-inch diameter galvanized iron post with 2½-inch diameter brass cap marked:

T37S R3E
E 1/16
C—C
S4
1981
LS 1071

From which the following references:

A 3/4-inch diameter galvanized iron post as established by RS 404 bears S 20° 23' W 2.42 feet distance.

A 16-inch diameter cedar bears S 44° 07' W 83.00 feet distance, scribed CE 1/16 LS 1071 BT.

A 13-inch diameter fir bears S 60° 07' W 29.90 feet distance, scribed CE 1/16 LS 1071 BT.

Trees marked by Ramsey:

A 20-inch diameter fir bears N33° 19' W 32.80 feet distance, healed blaze.

A 15-inch diameter fir bears S 10° 47' W 33.90 feet distance, healed blaze.

Center one-quarter corner Section 4, Township 37 South, Range 3 East.

At the corner point I set a 2½-inch diameter galvanized iron post with 2½-inch diameter brass cap marked:

T37S R3E
C 1/4 • S10
1981
LS 1071

From which the following references:

A 11-inch diameter fir bears N 89° 49' E 30.35 feet distance, scribed
C 1/4 S 10 LS 1071 BT.

A 6-inch diameter fir bears S 25° 10' E 45.20 feet distance, scribed
X-BT.

A 1½-inch diameter galvanized iron post established by Surveyor Ramsey
bears N 82° 07' E 7.71 feet distance.

Trees marked by Ramsey:

A 28-inch diameter pine stump bears S 25° 10' E 45.20 feet distance.

A 13-inch diameter fir bears S 85° 58' W 43.85 feet distance, healed
blaze.

A dead and down 25-inch diameter fir bears N 17° 59' E 14.00 feet
distance, scribe visible.

A 22-inch diameter fir bears N 41° 27' E 48.20 feet distance, healed
blaze.

East one-sixteenth corner common to Sections 4 and 9, Township 37 South,
Range 3 East.

At the corner point I set a 2½-inch diameter galvanized iron post with a
2½-inch diameter brass cap marked:

T37S R3E
E 1/16 S4
S9
1981
LS 1071

From which the following references:

A 18-inch diameter fir bears N 03° 14' W 27.80 feet distance, scribed
E 1/16 S 4 LS 1071 BT.

A 27-inch diameter fir bears S 77° 32' E 6.40 feet distance, scribed
E 1/16 S 9 LS 1071 BT.

A ¾-inch diameter galvanized iron post established by Surveyor Ramsey
bears S 71° 30' 24" E 9.26 feet distance.

A 12-inch diameter fir bears S 77° 32' E 13.20 feet distance, scribe
visible (marked by Ramsey).

A 15-inch diameter fir bears S 86° 25' W 12.80 feet distance, scribed
E 1/16 S 9 LS 1071 BT.

Center west one-sixteenth corner Section 3, Township 37 South, Range 3 East.

At the corner point I set a 2½-inch diameter galvanized iron post with 2½-
inch diameter brass cap marked:

A 9-inch diameter oak bears S 53° 20' W 27.97 feet distance, scribe visible.

One-quarter corner common to Sections 9 and 10, Township 37 South, Range 3 East.

At the corner point I found a standard Bureau of Land Management brass cap monument marked:

U.S. Dept. of Interior
 Unlawful to Disturb

	1/4	
S9		S10
T37S		R3E
	1961	

Cadastral Surveys
 Bureau of Land Management

From which the following references:

A 12-inch diameter pine bears S 42° 03' W 39.90 feet distance, healed blaze.

A 16-inch diameter pine bears N 41° 03' W 46.60 feet distance, healed blaze.

A 11-inch diameter pine bears N 50° 22' E 35.10 feet distance, healed blaze.

A 12-inch diameter pine bears N 66° 19' E 25.00 feet distance, healed blaze.

Corners Established This Survey

One-quarter corner common to Sections 10 and 15, Township 37 South, Range 3 East.

At the corner point I cement a 2½-inch diameter brass cap in rock outcrop marked:

T37S		R3E
1/4		S10
		S15
	1981	
	LS 1071	

From which the following references:

A P-K nail driven in rock face bears N 16° 00' E 16.30 feet distance.

A P-K nail driven in rock face bears S 36° 00' E 2.55 feet distance.

A 1 3/4-inch diameter galvanized iron post established as a witness monument by Registered Land Surveyor No. 404 Marvin C. Ramsey bears S 43° 21' 44" W 47.81 feet distance.

NOTE: I find the position for this corner as established by Surveyor Ramsey incorrectly located; I therefore monument the correct position as described above.

Center one-quarter corner Section 10, Township 37 South, Range 3 East.

At the corner point I set a 2½-inch diameter galvanized iron post with 2½-inch diameter brass cap marked:

From which the following references:

A 20-inch diameter fir stump bears S 51° 27' W 38.60 feet distance, healed blaze.

A dead and down fir size indeterminate, bears N 35° 27' W 30.50 feet distance, scribe fragments found.

A 8-inch diameter fir bears N 19° 44' W 17.85 feet distance, CS-BT scribe visible.

A 27-inch diameter fir bears S 81° 29' E 9.40 feet distance, healed blaze.

Section corner common to Sections 10, 11, 14, and 15, Township 37 South, Range 3 East.

At the corner point I found a standard Jackson County Surveyor's brass cap monument marked:

Jackson County

T37S	R3E
10	11
15	14
1980	

From which the following references:

A 28-inch diameter fir stump bears N 26° 18' W 20.50 feet distance, healed blaze.

A 26-inch diameter fir bears N 13° 12' W 17.70 feet distance, scribe CS-BT visible.

A 38-inch diameter fir bears N 72° 46' E 21.70 feet distance, healed blaze.

A 29-inch diameter fir bears S 50° 56' E 20.30 feet distance, healed blaze.

A 22-inch diameter fir bears S 42° 36' W 14.65 feet distance, healed blaze.

Section corner common to Sections 9, 10, 15, and 16, Township 37 South, Range 3 East.

At the corner point I found a standard Jackson County Surveyor's brass cap monument marked:

Jackson County

9	10
16	15
1980	

From which the following references:

A 20-inch diameter oak bears N 48° 58' W 15.70 feet distance, healed blaze.

A 8-inch diameter oak bears S 26° 31' E 22.70 feet distance, scribe visible

A 16-inch diameter oak bears N 42° 46' E 30.94 feet distance, scribe visible.

U.S. Dept. of Interior
Unlawful to Disturb
T36S R3E
S32 | S33
S5 | S4
T37S
1961
Cadastral Surveys
Bureau of Land Management

From which the following references:

A 21-inch diameter fir bears N 47° 27' E 12.80 feet distance, healed blaze.

A 17-inch diameter fir bears S 77° 45' E 30.99 feet distance, healed blaze.

A 21-inch diameter fir bears S 59° 41' E 19.93 feet distance, healed blaze.

A 10-inch diameter fir bears S 51° 59' W 4.60 feet distance, healed blaze.

A 16-inch diameter fir bears N 40° 14' W 23.75 feet distance, healed blaze.

One-quarter corner common to Section 33, Township 36 South, Range 3 East, and Section 4, Township 37 South, Range 3 East.

At the corner point I found a standard Bureau of Land Management brass cap monument marked:

U.S. Dept. of Interior
Unlawful to Disturb
T36S R3E
1/4 $\frac{S33}{S4}$
T37S
1961
Cadastral Surveys
Bureau of Land Management

From which the following references:

A 11-inch diameter cedar bears N 65° 59' W 37.06 feet distance, scribe visible.

A 19-inch diameter cedar bears S 37° 28' W 28.96 feet distance, scribe visible.

One-quarter corner common to Sections 10 and 11, Township 37 South, Range 3 East.

At the corner point I found a standard Jackson County Surveyor's brass cap monument marked:

Jackson County
T37S R3E
10 | 11
1/4
S
1980

T37S R3E

S5	S4
S8	S9

 1981
 LS 1071

From which the following references:

A 23-inch diameter oak bears N 44° 32' E 54.98 feet distance, healed blaze.

A 51-inch diameter pine bears S 31° 56' E 19.98 feet distance, healed blaze.

A 17-inch diameter oak snag bears S 55° 35' W 31.75 feet distance, healed blaze.

A 36-inch diameter pine bears N 47° 02' W 51.89 feet distance, healed blaze.

New reference marked this survey:

A 12-inch diameter fir bears S 33° 33' W 26.02 feet distance, scribed T37S R3E S8 LS 1071 BT.

One-quarter corner common to Sections 4 and 5, Township 37 South, Range 3 East.

At the corner point I found a 1 3/4-inch diameter galvanized iron post as established by Registered Land Surveyor No. 404 Marvin C. Ramsey. I find this monument correctly located.

In the top of said iron post I cement a 2 1/2-inch diameter brass disk marked:

T37S R3E

1/4	
S5	S4

 1981
 LS 1071

From which the following references (trees marked by Ramsey which I do not open and verify):

A 14-inch diameter fir bears S 76° 39' E 11.40 feet distance.

A 18-inch diameter fir bears S 36° 09' W 25.20 feet distance, healed blaze.

New references marked this survey:

A 15-inch diameter fir bears S 32° 17' E 22.60 feet distance, scribed 1/4 S 4 LS 1071 BT.

A 15-inch diameter fir bears N 71° 09' W 47.20 feet distance, scribed 1/4 S 5 LS 1071 BT.

Section corner common to Sections 32 and 33, Township 36 South, Range 3 East, and Sections 4 and 5, Township 37 South, Range 3 East.

At the corner point I found a standard Bureau of Land Management brass cap monument marked:

One-quarter corner common to Sections 3 and 4, Township 37 South, Range 3 East.

At the corner point I found a 1½-inch diameter galvanized iron post filled with a wood plug and brass washer tagged RS 404. I find this monument correctly located and remove said iron post and place inside my monument. At the corner point I set a 2½-inch diameter galvanized iron post with a 2½-inch diameter brass cap marked:

T37S R3E
 1/4
 S4 | S3
 1981
 LS 1071

From which the following references:

A 16-inch diameter fir bears S 05° 44' W 91.59 feet distance, scribed 1/4 S 4 LS 1071 BT.

A 20-inch diameter fir bears N 46° 12' E 35.06 feet distance.

A 8-inch diameter fir bears S 25° 04' W 14.84 feet distance, tree dead and down.

A 15-inch diameter fir bears S 89° 49' W 49.60 feet distance, scribed 1/4 S 3 LS 1071 BT.

One-quarter corner common to Sections 4 and 9, Township 37 South, Range 3 East.

At the corner point I found a 1½-inch diameter galvanized iron post filled with a wood plug and brass washer tagged RS 404. The original 20-inch by 14-inch by 7-inch stone marked 1/4 is situated next to iron post. In the top of said post, I cement a 2½-inch diameter brass cap marked:

T37S R3E
 1/4 $\frac{S4}{S9}$
 1981
 LS 1071

From which the following references:

A 10-inch diameter oak bears N 16° 46' E 14.40 feet distance, partial scribe visible.

A 19-inch diameter fir bears N 80° 11' E 18.00 feet distance, healed blaze.

A 12-inch diameter fir bears S 12° 41' W 16.20 feet distance, healed blaze.

A 15-inch diameter pine bears S 51° 35' W 40.50 feet distance, scribe marks visible.

Section corner common to Sections 4, 5, 8, and 9, Township 37 South, Range 3 East.

At the corner point I found a 1 3/4-inch diameter galvanized iron post filled with a wood plug. Original stone monument situated alongside post. In the top of said iron post I cement a 2½-inch diameter brass disk marked:

From which the following references:

A 11-inch diameter fir bears N 26° 28' E 27.70 feet distance, healed blaze.

A 41-inch diameter fir bears S 28° 17' E 12.20 feet distance, healed blaze.

A 13-inch diameter fir bears S 18° 39' W 26.90 feet distance, healed blaze.

A 24-inch diameter fir bears N 50° 10' W 4.80 feet distance, healed blaze.

West one-sixteenth corner common to Sections 3 and 10, Township 37 South, Range 3 East.

At the corner point I found 3/4-inch diameter iron post filled with a wood plug, and brass washer tagged RS 404. I find this monument correctly located and remove said iron post and place inside my monument and at the corner point I set a 2½-inch diameter galvanized iron post with 2½-inch diameter brass cap marked:

T37S R3E
W 1/16 $\frac{S3}{S10}$
1981
LS 1071

From which the following references:

A 18-inch diameter fir bears S 68° 18' W 45.00 feet distance, scribed W 1/16 S 10 LS 1071 BT.

A 10-inch diameter fir bears N 66° 43' E 58.15 feet distance, scribed W 1/16 S 3 LS 1071 BT.

A 23-inch diameter fir bears N 61° 06' E 47.87 feet distance.

Section corner common to Sections 3, 4, 9, and 10, Township 37 South, Range 3 East.

At the corner point I found a 1½-inch diameter galvanized iron post as established by Registered Land Surveyor No. 404 Marvin C. Ramsey. I find this monument located within acceptable limits. In the top of said iron post I cement a 2½-inch diameter brass disk marked:

T37S R3E
 $\frac{S4}{S9} \mid \frac{S3}{S10}$
1981
LS 1071

From which the following references (trees marked by Ramsey):

A 11-inch diameter fir bears N 62° 57' E 19.40 feet distance, healed blaze.

A 25-inch diameter fir bears S 14° 04' E 23.20 feet distance, healed blaze.

A 23-inch diameter fir bears S 40° 01' W 33.90 feet distance, partially healed blaze.

A 14-inch diameter fir bears N 43° 56' W 20.00 feet distance, healed blaze.

the true line were blazed and painted with red timber marking paint.

Work was performed utilizing a Wild T-2 Theodolite and Hewlett-Packard 3808-A electronic distance meter.

Corners Accepted for Control

The following corners were described within Record Survey No. 8783 and will not be redescribed within this narrative.

Section corner common to Sections 34 and 35, Township 36 South, Range 3 East, and Sections 2 and 3, Township 37 South, Range 3 East.

One-quarter corner common to Sections 34, Township 36 South, Range 3 East, and Section 3, Township 37 South, Range 3 East.

West one-sixteenth corner Section 34, Township 36 South, Range 3 East, and Section 3, Township 37 South, Range 3 East.

Section corner common to Sections 33 and 34, Township 36 South, Range 3 East, and Sections 3 and 4, Township 37 South, Range 3 East.

The following corners were used as control and are described as follows:

One-quarter corner common to Sections 2 and 3, Township 37 South, Range 3 East.

At the corner point I found a standard Jackson County Surveyor's brass cap monument marked:

Jackson County
T37S R3E
3 | 2
1/4 S

From which the following references:

A 19-inch diameter fir bears S 85° 05' W 31.10 feet distance, scribe CS-BT visible.

A 28-inch diameter fir bears N 73° 29' W 4.90 feet distance, healed blaze. This tree marked by R. L. S. 404 Marvin C. Ramsey.

A 36-inch diameter cedar bears S 65° 24' E 29.70 feet distance, scribe 1/4 S RS 404 BT visible.

A 13-inch diameter fir bears S 60° 17' E 48.60 feet distance, scribe CS-BT visible.

One-quarter corner common to Sections 3 and 10, Township 37 South, Range 3 East.

At the corner point I found a standard Bureau of Land Management brass cap monument marked:

U. S. Dept. of Interior
Unlawful to Disturb
T37S R3E
1/4 $\frac{S3}{S10}$

1961
Cadastral Surveys
Bureau of Land Management

SURVEY NARRATIVE TO COMPLY WITH
PARAGRAPH 209.250 OREGON REVISED STATUTES

SURVEY FOR: Rogue River National Forest
P. O. Box 520
Medford, Oregon 97501

LOCATION: Sections 3, 4, and 10, Township 37 South, Range 3
East, Willamette Meridian, Jackson County, Oregon

BASIS OF BEARING: Solar observation

PURPOSE: To establish monuments at corner points and mark and
post property lines separating National Forest and
private lands.

PROCEDURE: I began this survey with an investigation of controlling
corners required for subdivision of Sections 3, 4, and
10. The following corners had been recovered and
remonumented from original corner evidence by either the
Bureau of Land Management, Cadastral Surveys Division,
or the Jackson County Surveyor.

Section 3: Northwest and northeast section corners; east
and south one-quarter corners.

Section 4: Northeast and northwest section corners;
north one-quarter corner.

Section 10: Southeast and southwest section corners;
north, east, and west one-quarter corners.

My investigation also revealed a survey performed by
Registered Professional Land Surveyor No. 404 Marvin C.
Ramsey. Within that survey, Surveyor Ramsey recovered
and remonumented several original corner points. Surveyor
Ramsey also reestablished several original corner points
by proportional measurement.

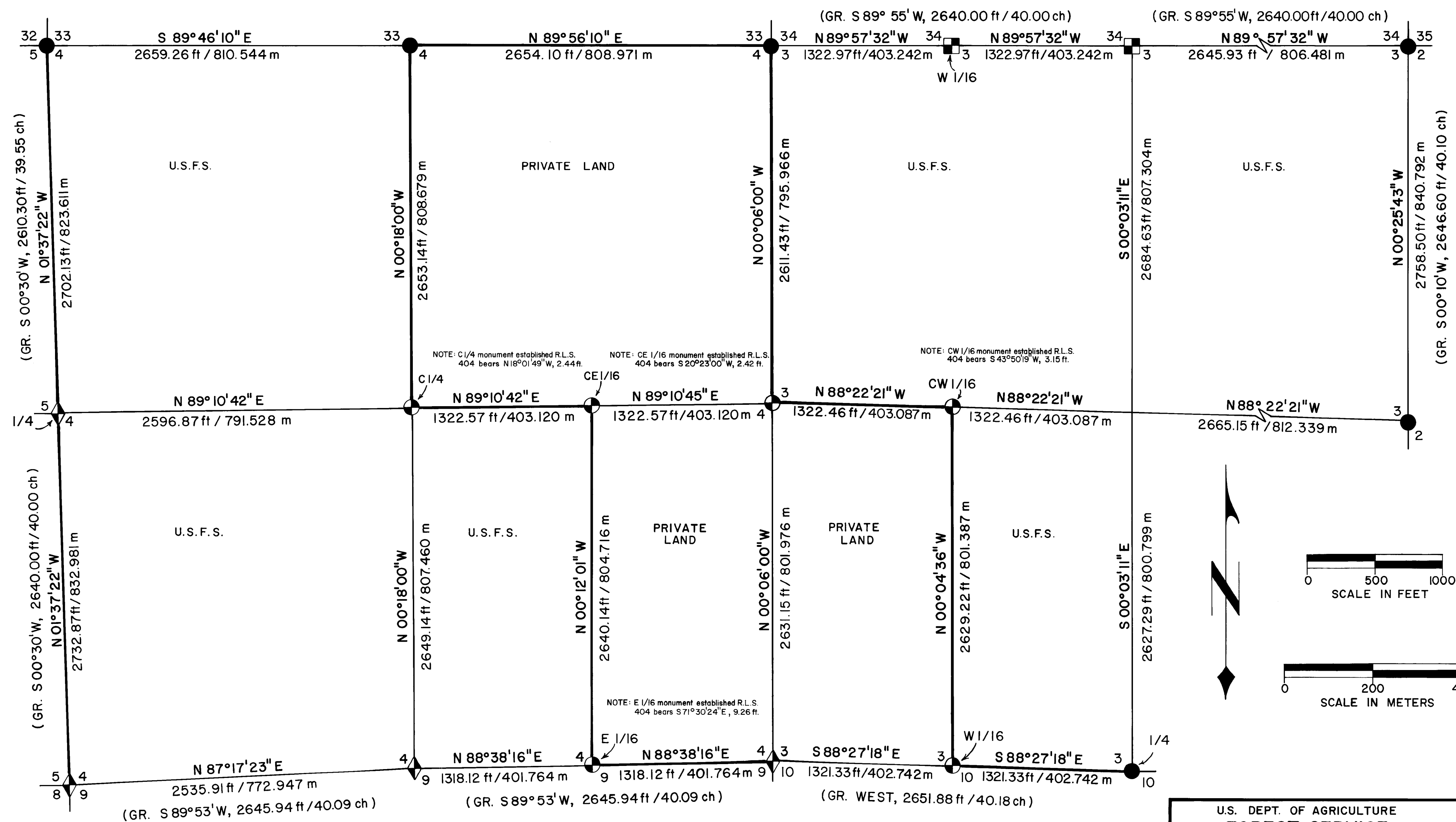
Original corner points recovered by Surveyor Ramsey are as
follows: South one-quarter corner Section 4 and the south-
west section corner Section 4.

The north one-quarter and west one-sixteenth corners of
Section 3 were reestablished by myself under Record Survey
No. 8783.

With the above corner control identified, I performed a
series of closed traverses tying each loop to a primary
control traverse. The positions of Surveyor Ramsey's
monuments were also tied. Those monuments established
by Surveyor Ramsey which were found within acceptable
limits were accepted and remonumented in the positions
found. Monuments not found within acceptable limits
were left in position and the correct corner position
monumented as described within this narrative and as
shown on the attached map of survey.

An extensive search for all previously unrecovered
original corner evidence was performed at each corner
location prior to reestablishment by proportionate
measurement.

Property corners were monumented in the positions as
shown and property lines separating National Forest and
private lands were posted utilizing sign posts with
National Forest boundary signs attached. Trees along

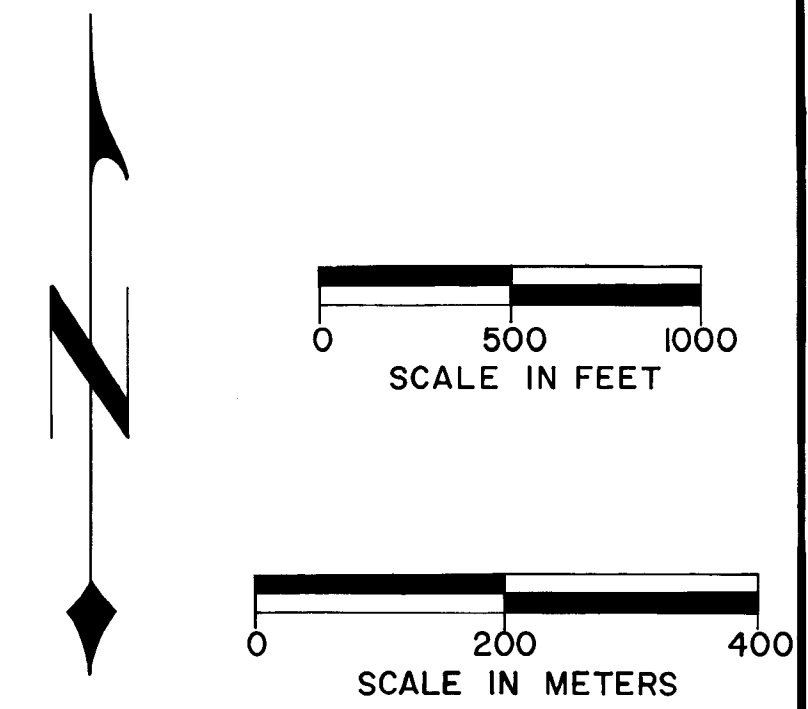
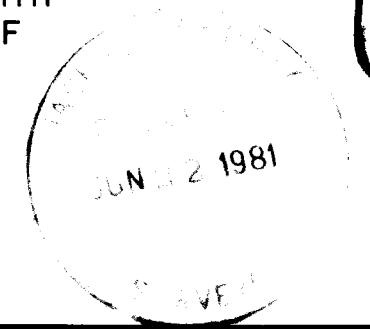


LEGEND

- FOUND STANDARD BLM OR COUNTY SURVEYOR MONUMENT
- ⊕ SET 2 1/2" DIA GALVANIZED IRON POST WITH 2 1/2" DIA BRASS CAP
- ⬠ CEMENTED 2 1/2" DIA BRASS DISC IN TOP OF MONUMENT SET BY R.L.S. 404
- ⊠ MONUMENT SET - REF. RECORD SURVEY NO. 8783
- PROPERTY LINE ESTABLISHED AND POSTED THIS SURVEY
- SECTION LINE CALCULATED FROM TRAVERSE SURVEY

CERTIFICATE OF SURVEY

I, HAROLD L. CENTER, REGISTRATION NO. 1071, REGISTERED PROFESSIONAL LAND SURVEYOR, STATE OF OREGON, HEREBY CERTIFY THAT THIS MAP CORRECTLY REPRESENTS A SURVEY MADE BY ME OR UNDER MY DIRECTION, IN CONFORMANCE WITH THE LAWS OF THE STATE OF OREGON, AT THE REQUEST OF THE U.S. FOREST SERVICE.



U.S. DEPT. OF AGRICULTURE
FOREST SERVICE
REGION 6 ROGUE RIVER NAT'L FOREST

DEPENDENT RESURVEY AND SECTION SUBDIVISION
SEC. 3 & 4, T.37S., R.3E., W.M.
JACKSON COUNTY, OREGON

REVIEWED BY *D. M. Smith* DATE *6/2/81*
REVIEWED BY *R. J. Hathaway* DATE *6/2/81*